



Oh, Boy! (with Crock)

*From fine Irish porcelain,
to sturdy Red Wing
stoneware...Pages 8-9*



**POTTERY MUSEUM
FINANCIAL UPDATE**

Page 5

**RED WING'S COLORED
KITCHEN WARE**

Page 6

RWCS CONTACTS

RWCS BUSINESS OFFICE

PO Box 50
240 Harrison St. • Unit #3
Red Wing, MN 55066-0050
651-388-4004 or 800-977-7927 • Fax: 651-388-4042
EXECUTIVE DIRECTOR: STACY WEGNER
EXECUTIVEDIRECTOR@REDWINGCOLLECTORS.ORG
MEMBERSHIP@REDWINGCOLLECTORS.ORG
Web site: WWW.REDWINGCOLLECTORS.ORG

BOARD OF DIRECTORS

PRESIDENT: LARRY BIRKS
26400 S Hickory Trl. • Harrisonville, MO 64701-1184
816-898-9260 • PRESIDENT@REDWINGCOLLECTORS.ORG

VICE PRESIDENT: PAUL WICHERT
W247S7000 Sugar Maple Dr. • Waukesha, WI 53189
414-731-0218 • VICEPRESIDENT@REDWINGCOLLECTORS.ORG

SECRETARY: JOHN SAGAT
7241 Emerson Ave. So. • Richfield, MN 55423-3067
612-861-0066 • SECRETARY@REDWINGCOLLECTORS.ORG

TREASURER: DAN BECK
2215 Hill Place SW • Rochester, MN 55902
507-398-6358 • TREASURER@REDWINGCOLLECTORS.ORG

HISTORIAN: NANCY LAMBERT
17 Newcastle Lane • Bella Vista, AR 72714
785-691-7213 • HISTORIAN@REDWINGCOLLECTORS.ORG

REPRESENTATIVE AT LARGE: RUSSA ROBINSON
1970 Bowman Rd. • Stockton, CA 95206
209-463-5179 • REPATLARGEWEST@REDWINGCOLLECTORS.ORG

REPRESENTATIVE AT LARGE: JERRY MOUNTS
14157 S Summit St. • Olathe, KS 66062 (Apr.–Oct.)
227 Trevino Ct. • N Ft. Myers, FL 33903 (Oct.–Apr.)
816-510-2248 • REPATLARGEEAST@REDWINGCOLLECTORS.ORG

AUCTION MANAGER: BRUCE SELFRIDGE
PO Box 812 • Cloverdale, CA 95425
707-431-7753 • AUCTION@REDWINGCOLLECTORS.ORG

COMMEMORATIVE MANAGER: BOB MORAWSKI
2130 S. Ridgeway Dr. • New Berlin, WI 53146
262-853-8269 • COMMEMORATIVE@REDWINGCOLLECTORS.ORG

EDUCATION MANAGER: GLENN BEALL
29622 420th Ave. • Scotland, SD 57059
712-644-2256 • EDUCATION@REDWINGCOLLECTORS.ORG

JULY CONVENTION SUPPORT PERSONNEL:
Pre-registration – JIM & KAREN KEYS
HEIDI HAHLLEN

Show & Sale – DALE ERICKSON, 507-645-6771
SHOWANDSALE@REDWINGCOLLECTORS.ORG

Display Room – LAURA BEALL, 605-464-5941
DISPLAY@REDWINGCOLLECTORS.ORG

IN THIS ISSUE.....



PAGE 3	NEWS BRIEFS, ABOUT THE COVER
PAGE 4	CLUB NEWS, ARTIFACT DONATED TO POTTERY MUSEUM
PAGE 5	POTTERY MUSEUM OF RED WING FINANCIAL UPDATE
PAGE 6	RED WING COLORED KITCHEN WARE
PAGE 7	THE “BACK” CROCK IS BACK
PAGE 8	THE ORIGIN OF THE “LITTLE BOY WITH THE CROCK”
PAGE 10	TOGETHER AGAIN: THE STORY OF THE 70 GALLON JUGS
PAGE 11	INTRODUCTION TO DINNERWARE: EBB TIDE
PAGE 12	MIDWINTER 2015: “THE BIG GAME”
PAGE 13	MIDWINTER 2015 REGISTRATION FORM
PAGE 15	RECENT FINDS & DEALS
PAGE 16	THE STORY OF THE 70 GALLON JUGS (CONTINUED)

MEMBERSHIP

A primary membership in the Red Wing Collectors Society is \$35 annually and an associate membership is \$15.

There must be at least one primary member per household in order to have associate membership. Members can pay for up to two years when renewing their membership. Contact the RWCS Business Office for additional details.

NEWSLETTER EDITOR

RWCS MEMBER RICK NATYNSKI
PO Box 198
PEWAUKEE, WI 53072

NEWSLETTER@REDWINGCOLLECTORS.ORG • 414-416-WING (9464)

The Red Wing Collectors Society, Inc. Newsletter is published bi-monthly by the Red Wing Collectors Society, Inc. • 240 Harrison St. • Unit #3 • Red Wing, MN 55066.

Phone: 651-388-4004 Fax: 651-388-4042

WWW.REDWINGCOLLECTORS.ORG



YouTube



areavoices



Postmaster: Send address change to: Red Wing Collectors Society, Inc. Newsletter
PO Box 50 • Red Wing, MN 55066. USPS 015-791; ISSN 1096-1259.



Copyright © 2014 by the Red Wing Collectors Society, Inc. All rights reserved. The Red Wing Collectors Society, Inc. does not guarantee the accuracy of articles submitted by individual members.

~~Current Issues & to set, email, & get Copyright Red Wing Collectors Society~~

NEWS BRIEFS

REGISTRATION OPEN FOR MIDWINTER 2015 ...THE "BIG GAME"

Can you believe it's already time to start thinking about another MidWinter GetTogether? This issue of the *RWCS Newsletter* contains MidWinter information and the registration form on pages 12 and 13, respectively. Pre-registration must be sent in by Jan. 13. As in the past, this can be done by phone, mail or through the RWCS website (online registration is open until Jan. 15.) Although our new host – the Olympia Resort & Spa in Oconomowoc, Wis. – is holding our room block open until Jan. 6, rooms are limited so we recommend calling and booking your rooms if you haven't already done so.

This is shaping up to be an event that will have lots of "fresh" stoneware and pottery dealers with inventory that you've never seen! In addition to the faithful Red Wing dealers/collectors who would attend the event regardless of its location, we expect to see a lot of new attendees from Wisconsin and Illinois who will be selling at this event, whether it's from their hotel rooms or the Saturday Show & Sale. So whether you're eager to find new pieces for your collection or you have a large inventory of pieces that you're looking to sell, don't miss out on the first year at this new location!

SUPPORT THE POTTERY MUSEUM OF RED WING

A donation envelope was inserted with this issue of the *RWCS Newsletter* to provide members an opportunity to make a tax-deductible year-end donation to support the Pottery Museum of Red Wing. The next balloon payment on the building purchase of \$50,000 is due Jan. 16, 2015. Every little bit helps, so please consider showing your support for the museum by sending in a contribution. For more information, read the RWCS Foundation's financial report on page 5.

RESURRECTING THE RWCS ILLINOIS CHAPTER

Although it's been inactive for the past 5+ years, the RWCS Illinois Chapter was once a closely knit group that met often to talk Red Wing and view the collections of fellow members. The Society is trying to rekindle that fire by holding a meeting during Collectors of Illinois Pottery and Stoneware (COIPS) Club's Annual Convention (Oct. 24-26) at the Stoney Creek Inn in East Peoria, Ill. RWCS Members are invited to attend the meeting at noon on Saturday, Oct. 25. For more information, please contact RWCS Executive Director Stacy Wegner, or RWCS Reps at Large Russa Robinson and Jerry Mounts (contact info on page 2).

CONVENTION BUTTONS STILL AVAILABLE

A limited inventory of stoneware RWCS Convention buttons remains available for purchase from the RWCS Badger Chapter. The buttons were made by the Red Wing Stoneware Co. and are formed in the shape of a jug. Each button was hand-made, so each is unique and has its own charm, imperfections, etc. Buttons are \$5 each and postage is \$2.50 for one button, \$3 for two and \$3.50 for three. Order yours today by sending your name, address and a check made payable to the RWCS Badger Chapter, PO Box 170, Cedarburg, WI 53012. For more information, contact Badger Chapter Treasurer Diana Bailey at 414-303-2691 or DBAILEY45@WI.RR.COM.

GET YOUR CHRISTMAS SHOPPING DONE EARLY...GIVE RWCS MEMBERSHIP!

Do you know someone who should be a member of the Red Wing Collectors Society? Consider giving them the gift of RWCS membership this holiday season. We can send the membership packet and card to you in time for Christmas or as a hostess gift. Contact the office and we can assist you.

WWW.REDWINGCOLLECTORS.ORG



The five different "Little Boy with Crock" statues pictured above were on display at the Pottery Museum of Red Wing during the 2014 RWCS Convention. Included was the rarest, most-desirable Little Boy, which holds a bottle and a Red Wing Brewing Co. beer crate instead of a crock. A pair bearing the initials "R.L." and "M.L." was also present.

ABOUT THE COVER

Ask Red Wing collectors to list off some of their "dream pieces" and more than a few will tell you they'd love to have a stoneware "Little Boy with Crock" statue.

The last time a "Little Boy" appeared on the cover of the *RWCS Newsletter* was February of 2002. But it was time for that to change when longtime RWCS Member Gary Tefft sent in an article about the origin of the figurines over the summer.

Members of the RWCS Hall of Fame and noted authors of *Red Wing Potters & Their Wares*, Gary and his wife, Bonnie, embarked upon a quest in 1980 to learn all they could about the Little Boy statues. After collecting numerous chalkware figurines made by various manufacturers and connecting all the dots, they learned that the overall design of the Little Boy originated in Ireland in the 1860s. But as he reports in his article on pgs. 8-9, Gary believes that an unknown manufacturer based its own chalkware version off the Irish Little Boy in the late 1800s or early 1900s, and it was from that version that Red Wing likely cast a mold.

The consensus among collectors is that Red Wing didn't sell these figurines, but rather they were made by one or two potters on their lunch breaks and given away as gifts. Each is slightly different.

"Somebody went to a lot of trouble to make a mold just for fun," the Teffts say in their book. But, "the results seem well worth it."

Gary says the Red Wing Little Boy figurines are a combination of slip-cast (molded) parts and hand-modeled bits. The boy himself was probably cast in a couple of pieces.

After searching numerous Red Wing books, examining past *RWCS Newsletters* and looking through the photos I've taken since becoming the publication's editor back in 2006, I've discovered the following facts about the "Little Boy with Crock":

- At least 14 of these Red Wing Little Boy statues exist.
- The last Little Boy known to sell at auction brought \$9,750 at the 2003 RWCS Convention Auction.
- Most "Little Boy with Crock" statues hold a crock marked as 10 or 15 gallons, but at least one is holds a 6 gallon crock (pictured on pg. 87 of *Red Wing Potters & Their Wares*, 3rd Edition).
- All known Little Boys hold their coat open with their left hand except for the Red Wing Brewing Co. statue above and one with a 10 gallon crock, both of which hold a bottle in their left hand (both pictured on pgs. 230-231 of *Clay Giants, Book 3*).

In closing, are you looking for an original costume idea for this Halloween? How about dressing up like the Little Boy and hoisting a 10 or 15 gallon crock up on your shoulder? I think this would be hilarious, and you'd surely be the envy of all your friends.

On second thought, your chiropractor might not endorse this, so maybe you're better off dressing up like one of those Chef Pierre or Katrina cookie jars that Red Wing made. That would be pretty funny, too. 🍪 -Rick Natynski, *RWCS Newsletter* Editor





STACY WEGNER
Executive Director

I'm thrilled to report that the RWCS MidWinter GetTogether is only about 4 months away! That means the time has come to register. Log on to the RWCS website (WWW.REDWINGCOLLECTORS.ORG), call the office (800-977-7927) or mail in your completed registration form (see page 13). As usual, Sellers Tables are just \$35.

We're excited about having our MidWinter event in Wisconsin for the first time! The Olympia Resort in Oconomowoc is located about 30 miles west of downtown Milwaukee and 50 miles east of Madison, Wis. – the state capital.

The theme for the 2015 MidWinter GetTogether is "The Big Game". I can't wait to see everyone wearing their favorite football team's garb. And don't feel like it needs to be limited to NFL teams. You're welcome to wear clothing representing your favorite college team, high school, Pee-Wee league, or even the Canadian Football League (CFL) for that matter. Go nuts!

For more information about MidWinter 2015, turn to page 12. I can't wait to see you all at the BIG GAME in Oconomowoc, Wis!



BOB MORAWSKI
Commemorative Manager

As promised in the last issue of the *RWCS Newsletter*, here is a recap of RWCS Commemorative auction items and highlights. The water coolers with decorations submitted by RWCS Chapters were again popular with members. For the 2nd straight year, a new king was crowned; the Sunshine State Chapter cooler sold for \$475. The Golden State Chapter's cooler came in second at \$410, and the Southwest Redwingers' cooler



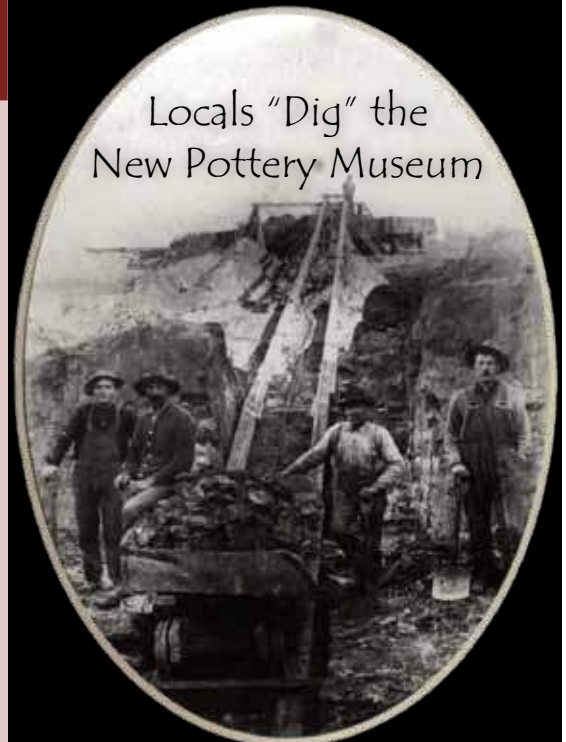
GLENN BEALL
Education Manager

First, my apologies to longtime Convention speaker Steve Showers. In my last newsletter column, I inadvertently missed thanking Steve for speaking at the 2014 Convention. Steve's sessions on the items he has found while digging the Red Wing Pottery Dump are always one of the most attended at Convention. Thanks, Steve, for continuing to share your passion with all of us.

I'm starting to gather speakers for the 2015 MidWinter GetTogether, and as always, I'm looking for new and different topics. As this event will be held in a new place (Oconomowoc, Wis.), I'd love to hear from anyone who knows of local collectors who might be good speakers on topics like stoneware, pottery or wares from the local region. If you or someone you know has a large collection of something that might interest our members, please contact me. We have had a few suggestions and I will attempt to find speakers that fit the requests. Tune in for updates as they become available. Good hunting and stay safe this fall!

~~~~~  
sold for \$395. Thanks to all chapters for the great artwork. The coolers were hand-turned and fired at Red Wing Stoneware Co. Then they were transported to Monmouth, Ill., where they were decorated by Melissa Giles (formerly of Maple City Pottery). Then they returned to Red Wing to be salt glazed by Red Wing Pottery. The chapter piece for next year is still to be determined. I will let the chapters know as soon as a decision has been made.

Total sales for the Commemorative Accessory piece was \$13,144. Total sales for the large version of the Commemorative, the 2 gallon water coolers and all remaining items was \$17,350. Thanks to everybody for the \$30,494 spent in support of the RWCS!



Wonderful things continue to happen at the Pottery Museum of Red Wing. In mid-September, 86-year-old Red Wing native Robert Staples dropped by with a photo of men working in the clay pits along with an early, wood-handled shovel. His grandfather, Jon Johnson, second from right, is leaning on that same shovel which he used for many years while working at the clay pits. Mr. Staples donated the photograph and the shovel to the museum. It's an incredible piece of Red Wing history and a good example of how the new museum space is drawing the attention of local citizens who own artifacts from the Red Wing Potteries.

-Nancy Lambert,  
RWCS Historian

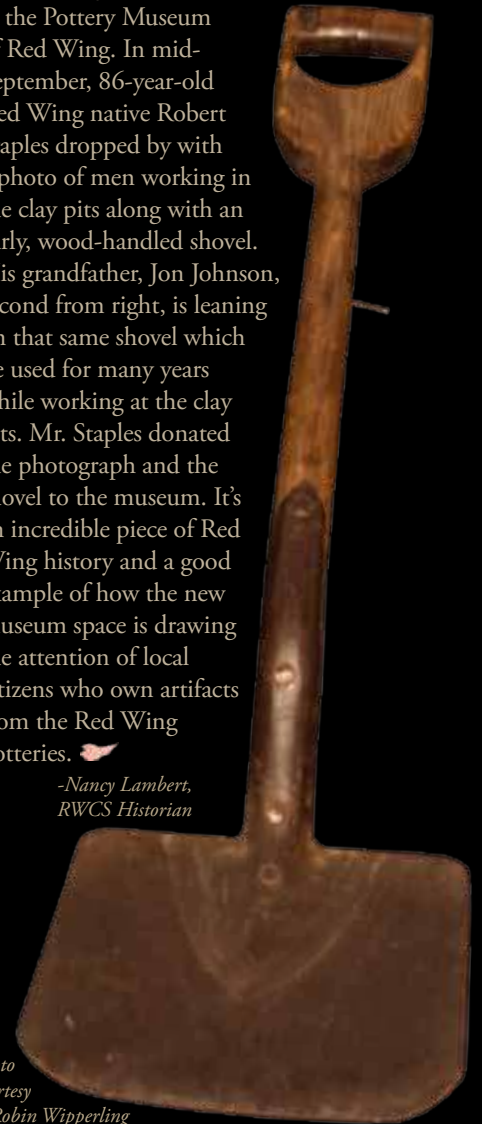


Photo courtesy of Robin Wipperling

# THE POTTERY MUSEUM OF RED WING ALREADY RUNNING STRONG!

Story by RWCS Foundation Board Members Dave Hallstrom and Nancy Lambert

The Pottery Museum of Red Wing is off to a great start with more than 50 people walking through the museum almost every day. The American Queen riverboat is in port on certain Fridays and Sundays and the museum is a planned stop on their excursion. More than 200 riverboat passengers experience the museum on scheduled tours. News stories about the Pottery Museum have recently appeared in the New York Times and USA Today. Several people who have visited the museum have said they stopped in because they had read one of the articles.

The annual "WINE-ing for Red Wing" fundraiser held during Convention added more than \$10,000 to the building fund. Thank you to everyone who attended and those who donated items for the raffle and the live and silent auctions. Special thanks to Wendy Callicoat and Ann Tucker, event co-chairpersons.

The RWCS Foundation has been able to accomplish wonders with the beginning cash and investment balance of nearly \$172,000 prior to the purchase of the new building and remodeling of the museum. On Dec. 28, 2012, the Foundation closed on the contract for deed purchase of Unit #3 in the Pottery Annex for \$500,000. The initial payment of \$50,000 plus closing costs paid at the time of closing left future balloon payments totaling \$450,000.

given for all the donations received, in July 2014, the Foundation paid the first \$100,000 payment on the principal plus the accrued interest from the first six months, which totaled \$14,824.14. Future balloon payments on principal are scheduled for \$50,000 in January 2015, \$150,000 to be paid in January 2016, and \$150,000 in January 2017 at which time the museum building will be paid for in full.

These balloon payments cannot be made without the help of our RWCS members. Many have already sent in donations and continue to contribute to the capital campaign fund. It's critical that ALL members participate and send donations to the campaign fund to help pay the Pottery Museum building debt. These funds will be accounted for separately and used only to make the contract for deed balloon payments as they come due. Donations should be sent to the Pottery Museum of Red Wing, 240 Harrison St., Unit #3, Red Wing, MN 55066-3058. Checks should be made out to "Pottery Museum of Red Wing" with a notation that the donation is for the capital campaign. You may use the remittance envelope that was included with this issue of the RWCS Newsletter. You may also donate with a credit card by calling Robin Wipperling, Museum Manager, at 651-327-2220.

Thank you for remembering the RWCS Foundation as you make your year-end charitable contributions. You will receive a letter from the Foundation documenting your donation for your tax records.

The above information was provided by Carolyn Lueck, CPA and RWCS Foundation Board member, who traveled to Red Wing in mid-September to start working with the RWCS Foundation's financial accounting system. Additional financial information will follow in future issues of the RWCS Newsletter.



Photo courtesy of Robin Wipperling

*If every member of the RWCS contributed just \$3 a month for the next three years, the balance on the Pottery Museum building would be paid off. Shown above, a little boy who recently visited the museum insisted on putting his dollar in the donation box.*

## POTTERY MUSEUM OF RED WING REMODELING COSTS

|                                 |           |
|---------------------------------|-----------|
| DUMPSTER                        | \$ 1,454  |
| MOLD REMOVAL                    | \$ 8,864  |
| SHEET ROCK & PAINT              | \$ 4,076  |
| SPRINKLER SYSTEM EXPANSION      | \$ 1,470  |
| BUILDING MATERIALS, PERMITS     | \$ 16,173 |
| BARNWOOD                        | \$ 1,250  |
| PLUMBING, ELECTRICIAN           | \$ 9,645  |
| GLASS DOORS & WINDOWS           | \$ 2,563  |
| DOORS, MILLWORK, HARDWARE       | \$ 16,993 |
| MUSEUM FLOOR (GROUND & STAINED) | \$ 13,200 |
| KITCHEN FLOOR                   | \$ 881    |
| GIFT SHOP & HALL TILE           | \$ 13,132 |
| INSTALL 6 ROOMS OF CARPET       | \$ 2,140  |
| SECURITY SYSTEM                 | \$ 16,000 |
| TOTAL PAID BY FOUNDATION        | \$107,841 |
| HVAC, FURNACE SIDEWALKS (GRANT) | \$ 47,480 |
| TOTAL COST                      | \$155,321 |

The museum remodeling cost totaled \$155,321 with \$107,841 paid from the RWCS Foundation and \$47,480 funded by a local grant for heating, ventilation, air conditioning and exterior concrete work. The list at left breaks down the remodeling costs.

There were significant

donated labor hours and donated items that allowed us to complete the project with construction costs of \$8.30 per square foot compared to an average of \$100 per square foot if a contractor had been hired to do all the work. The grant contributed \$2.25 per square foot in addition to the amounts paid by the Foundation. One half of the grant will need to be repaid in 10 years, interest free. Major improvements to the building and the museum space have been completed with the exception of insulation and venting to the roof. This will hopefully be completed before winter. All donations will be able to go directly to paying for the building.

The Foundation has paid monthly interest of \$2,517.42 starting six months after the purchase of the building. The interest payment amounts decrease as balloon payments are made. With "thanks"

## UPCOMING MUSEUM & FOUNDATION EVENTS

**RWCS Foundation Fall Auction** – 9 a.m. Saturday, Nov. 8 at the VFW Hall in Zumbrota, Minn. (preview at 7 a.m.) conducted by Houghton Auction Service.

**The RWCS Foundation Board** will hold its Fall Foundation Board Meeting and Annual Board Meeting at the Pottery Museum of Red Wing following the Nov. 8 Fall Foundation Auction.

**Annual "Give to the Max" Day** – Thursday, Nov. 13. The link to the website to make a donation to the Pottery Museum along with instructions will be e-mailed to you as the date gets closer. Information will also be given to the RWCS Chapter presidents. Checks can be made out to "Pottery Museum of Red Wing" and mailed to the museum office. You may also make a donation by credit card by phoning the office at 651-327-2220.

**Hands-on Pottery Class** – Saturday, Nov. 15 at the Pottery Museum of Red Wing. Local potter, sculptor and artist Richard Spiller will instruct participants in "scraffito" technique. Cost is \$30 and includes supplies and a finished product. For more information and for class times, call the Pottery Museum office at 651-327-2220.



*Pictured above are Red Wing Colored Kitchen Ware Covered Casseroles (yellow, ivory and blue), Pitchers (ivory and green), a covered Remekin (green) and a 2-pint Beater Pitcher (yellow).*

# RED WING COLORED KITCHEN WARE

*Story by RWCS Member Brent Mischke, with contributions from RWCS Hall of Fame Members Terry Moe & Dennis Nygaard*

At the 2014 MidWinter GetTogether, RWCS Hall of Fame Member Dennis Nygaard revealed the shards he dug from Pottery Road that hinted at a previously unknown line of Red Wing kitchenware. He also showed several complete pieces, including a mixing bowl, a tea pot and a covered casserole that matched the shards. Dennis encouraged his fellow Red Wing collectors to look for this new line whenever they were out antiquing. In the months following MidWinter, a number of pieces were found that seemed to be part of this line.

In June, a package of Red Wing literature from 1932 was auctioned on eBay. One part of this package included a previously unknown Red Wing Union Stoneware Co. circular that showed the “Red Wing Colored Kitchen Ware” line. The official company name of Dennis’ discovery was now known, along with

line drawings of the pieces available. A price list gives the colors available as green, yellow, blue and ivory, and points out that this line had a “white ware body”, perhaps, something new for Red Wing at the time.

Newly inducted into the RWCS Hall of Fame, Terry Moe’s current hypothesis for early Red Wing dinner-ware is that production of solid-colored kitchenware by the Red Wing companies began with this “Colored Kitchen Ware” line. The “Pansy” line followed, then the “Wreath” line, and finally, the “Gypsy Trail” line which was a full line of both kitchenware and dinnerware.

A variation from the brochure has already been found. There is only one size of tea pot listed, but two sizes are now known. The photos shown here were taken during the July 2014 Convention.



*Above: 5 oz. Custard Cup (ivory), large Teapot (yellow), 8-inch Mixing Bowl (ivory) and small Teapot (green). Below: 8-inch Mixing Bowl (green), Pitcher (yellow) and 6-inch Mixing Bowl (green).*



*The circular at right lists the Red Wing Colored Kitchen Ware line: 1. Nappy (6", 7" and 8" diameter) 2. Beater Pitcher with Beater (2 pints) 3. Cookie Jar and Cover with Rattan Handle (6 pints) 4. Four piece Refrigerator Set with Covers (2 3/4", 3 1/2", 4 1/2" and 5 1/2") 5. Mixing Bowls (6", 8" and 10") 6. Covered Nappy (1 1/2, 2 1/2 and 3 1/2 pints) 7. Custard Cup (5 oz.) 8. Casseroles with Covers (7" and 8") 9. Remekin with Cover and Stand (1 1/2, 2 1/2 and 3 pints) 10. Covered Nappy with Stand (1 1/2, 2 1/2 and 3 pints) 11. Teapot (6 cups), Creamer (7 oz.) and Sugar (12 oz.) 12. Pitchers (1/2 and 1 pint)*



## HISTORY OF THE CIRCULAR

We know part of the history of this “Red Wing Colored Kitchen Ware” circular. On April 16, 1932, A.A. Zimmerman of Mankato, Minn. placed an order with the Red Wing Union Stoneware Co. for “1 60 gallon jar”. He also requested catalogs of their “fancy wares”. The jar was shipped on the 19th of the same month, and the company sent Mr. Zimmerman two mailings containing several brochures advertising their wares. This kitchenware circular was included. According to the cover letter from H. H. Varney, vice-president of the RWUSCo., “We have a really fine line of this material”. This package of catalogs and brochures remained together for more than 80 years until an eBay seller from Mankato listed it all for auction this past June.

# THE "BACK" CROCK IS BACK

Story by RWCS Member Mike Back

It all started 122 years ago when Ernest Anton Back (pronounced Bach), a potter in Macomb, Ill. scratched "E.A. Back, Dec. 31/92 Macmb ILL" on an unfired 3 gallon crock that he had just completed. In those times, potters often marked their name on a pottery piece set for the final firing of the year.

Fast forward 102 years to 1994, when the crock turned up at an estate auction in Dodgeville, Wis. It was purchased by local resident Jeffrey Grayson. Jeffrey told me he bought it because of the unique markings with the intention of learning more about the inscription at some point. Jeffrey admitted he is not a big collector of stoneware, but he couldn't resist the mystery of this particular crock.

In October 2013, 19 years after purchasing the crock, Jeffrey was recently retired and he decided he would finally embark on the research to find out just who E.A. Back was and the significance of the date inscribed. His first step was to Google the name "Back".

He found an article that I had written in the October 2008 *RWCS Newsletter* regarding a pottery shard found in the old Red Wing pottery dump. The shard was inscribed with the name "Back". Although my contact information wasn't included in the article, it did mention that I was a member of the Golden State Chapter, so Jeffrey e-mailed Golden State Chapter President Bruce Cameron, who forwarded the message on to me. Jeffrey sent me pictures of the crock and wanted to know if this could possibly be a relative of mine. Initially, I was unsure. After all, what are the odds?

So on Oct. 4, 2013, I began in-depth research of my family tree to find out if I was related to an E.A. Back. I already knew that my great grandfather, William Back, was a potter in Macomb and then in Red Wing. I also knew from research that I had done 35 years ago that there were two Ernest Backs in my family. One was ruled out, because he lived at a later time. The other is my great grandfather's brother and possibly the guy I was looking for. But I didn't know his middle name, occupation or where he lived. I accessed Ancestry.com, census records, cemetery records and birth and death records. What I found was that there actually was an E.A. Back in our family.

Ernest Anton Back was born Feb. 24, 1859 in the town of Boonville in Missouri's Cooper County. He was my great grandfather's brother, making him my great, great uncle. According to the census records in 1910, he lived in Illinois and listed his occupation as "potter". He never married and lived with a sister. He died February 27, 1928 and is buried in Boonville, Mo.

During all this research, which took several months, I kept Jeffrey informed of the status of my findings. After I was convinced that the inscriber of the crock was indeed my great, great uncle, I expressed an interest in purchasing the crock from Jeffrey and his wife Janice, should they wish to sell it. Obviously, I was very excited to know there was this wonderful family heirloom in existence. It is not every day you find a 122-year-old crock with ties to your family.

In June, Jeffrey asked if my wife and I would be attending the



*RWCS Member Mike Back (left) proudly accepts the Back crock presented to him by new friend Jeffery Grayson during the 2014 RWCS Convention.*

2014 RWCS Convention, and if so, whether we'd be able to meet. I said we would be at the Convention for our 18<sup>th</sup> straight year and we looked forward to meeting with him.

After Jeffrey drove 4 hours from Dodgeville to Red Wing, we met him at the St James Hotel. He showed us the crock, which he had wrapped very carefully. It was just as the pictures showed, no cracks or chips.

I asked Jeffrey if he was interested in selling the crock, as I was very interested in purchasing it. Jeffrey said no, he would not sell it to me. But, he wanted to give it to me as a gift. He said that he and Janice discussed it, and they agreed that the crock should go back to the family that it once belonged to. Obviously their generosity overwhelmed us and for that we will always be grateful. After 122 years, the Back crock is back in the Back family, and we couldn't be happier. Thank you, Jeffrey and Janice Grayson. 🍷

*Mike Back and his wife, Judy, are proud long-time members of the RWCS Golden State Chapter.*



WWW.REDWINGCOLLECTORS.ORG

7

# The Origin of the “Little

Story by RWCS Hall of Fame  
Member Gary Tefft

When Bonnie and I were first introduced to collecting Red Wing, the “Little Boy with the Crock” figurines were definitely the most unexpected among the many forms and styles of ware we learned of. The innocent-looking lad in jacket and knee pants seemed so dramatically different in form than the old-timey, utilitarian stoneware jars and jugs. Yet, it was appropriate in style. It immediately became one of the pieces we’d most like to have in our collection and learn more about the origin of. Neither of these goals was quickly reached.

A surprising early discovery appeared in an advertisement on the back cover of the February 1980 edition of *Early American Life* magazine. In the background of a photo showing two women going over samples of wall paper, paint and fabric was the unmistakable “Little Boy” standing upon a sideboard. This boy lacked the dog and ferns at the base of the tree stump and he was holding a basket of fruit, rather than a jar (2<sup>nd</sup> from right in the group photo below). But just like the stoneware examples, the boy had his familiar attire and stood with his left hand holding his jacket open, while his right hand steadied the container on his shoulder. It was obvious that this wasn’t a Red Wing boy, but it was possibly a clue to the origin of the coveted stoneware figurines.

Soon after, I discovered and purchased a similar figurine, this one holding an impossibly large jar on his shoulder (5<sup>th</sup> from left in the photo below). A few months later, I found one identical to the one in the *Early American Life* ad; this one was paired with a little girl holding fruit cradled in her skirt and a vase on her shoulder. These were made of plaster of Paris, in an art form known as chalkware. Chalkware was widely popular in the Victorian era and continued to be made domestically throughout the last century; it was considered “the poor man’s porcelain.” I assumed that Red Wing styled their stoneware little boys after one of these chalkware figurines.

In 1980 or ’81, I took the second piece to Angeli Artcraft Products Company in Milwaukee (a manufacturer of plaster and composition art products) to ask if they could identify when it had been made. The shop was being tended by owner John Angeli, and an Italian man in his 80s who excitedly admired the figure and proclaimed, “This is like things we make in France when I was a boy.”

I told them that my other piece had “Marwal Ind. Inc.” molded on the back; John informed me that Marwal Industries had ceased production and

presented me with an obsolete catalog. (Catalog #8, 1972). It pictured: “Stock #690 Peasants W/Jugs, 12-1/2 inches”. So, the boy & girl holding huge jars, had apparently been in production into the ‘70s.

I continued collecting the chalkware figurines whenever I came across one. In addition to Marwal Industries, I’ve found signed examples made by Universal Statuary Co. of Chicago, Alexander Backer of New York and a few unidentified variations. Marwal Industries started making chalkware items in the 1940s in Miami. Universal Statuary produced “traditional Italian type designs” in chalkware from the late 1930s/early 40s until the 1980s. Alexander Backer was apparently in business between the 1930s and ‘50s. Today, with the modern miracles of the Internet and sites like Google and eBay, you can find pieces from Marwal, Universal Statuary, Alexander Backer and Angeli Artcraft readily available. Obviously Red Wing didn’t copy the design from any of these firms, but the form probably had been produced by other chalkware manufacturers at an earlier time.

While on a jaunt to Madison, Wis. in August 1986, we made a side trip to an antique mall. There in a display case was a genuine, Red Wing stoneware little boy. To this day, it is the largest amount we’ve ever put on a credit card. So, that part of our quest was complete; we had our own long-craved-for Little Boy.



# Boy with the Crock”

A few years later, we were making one last sweep through Red Wing’s Main Street shops before heading home after the annual RWCS Convention. We parked right in front of a shop specializing in Irish items. In the window, a familiar shape caught my eye. It was nothing less than a porcelain figurine made by the Belleek Pottery Co. of Ireland. On his shoulder, he held a basket woven of slats.

Referring to a well-illustrated book, the salesperson was able to tell us that the design was originated by Belleek in the 1860s and it had recently been resurrected. On the earliest pieces, the openings between the slats of the basket had been carefully pierced by hand before firing. The example pictured in the lower right corner was one of a few being offered on eBay only a month ago.

Finally, a link between the chalkware versions and Red Wing’s stoneware pieces was revealed at this year’s Convention by longtime Pottery Dump Digger Steve Showers. He and fellow digger Mark Youngblood had dug a stoneware boy and girl in bisque from a privy pit in Red Wing in 2011.

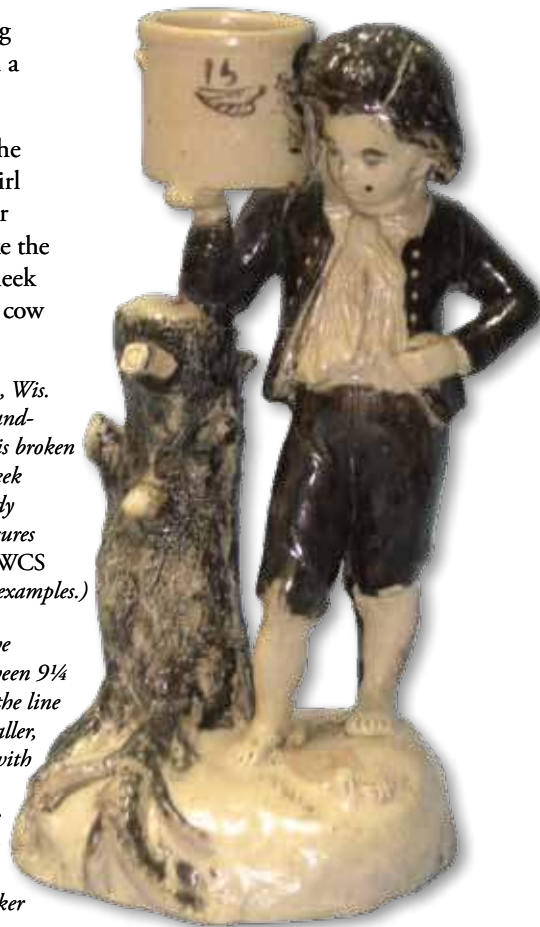
The significance of these pieces is that the basket and jug carried by the boy and girl are similar in style to the later Alexander Backer chalkware statuary – not at all like the large baskets carried by the original Belleek porcelain pieces. A salt-glazed stoneware cow

*At right: Our “Little Boy” found in a Madison, Wis. antique mall in 1986. It doesn’t include the hand-formed leafy foliage that some do, and his dog is broken off. But, his family lineage from fine Irish Belleek porcelain, by way of plebian chalkware to sturdy Red Wing stoneware can now be told. He measures 8½ inches tall. (Refer to the February 2002 RWCS Newsletter for a photo study of a couple more examples.)*

*At left: Some of the chalkware figurines we have accumulated over the years. They measure between 9¼ and 10½ inches tall. The pairs at each end of the line are signed “Alexander Backer”. The slightly smaller, fully painted pair are unsigned. The two boys with the large urns are signed “Marwal Ind. Inc.”; the fully painted one includes the item number 314. The simply painted, small-sized boy bears a paper label from Universal Statuary Co., Chicago. We also have a few in the style of Backer that are unsigned.*

was found in the same privy pit, suggesting that all of these pieces predate the Backer firm. But, this supports my theory that someone made chalkware knock-offs of the Belleek porcelain at least as early as the dawn of the 20th Century, and Red Wing copied its stoneware Little Boys from those knock-offs rather than copying them directly. The bisque-fired stoneware figurines were assembled from a number of individually molded parts that were slip-cast in plaster molds. There is evidence of some details having been touched-up or added by hand. The more familiar stoneware “Boy with the Crock” figurines were similarly assembled from slip-cast pieces, but typically had much more hand-modeled adornment added in the form of leafy foliage and exposed tree roots on the base. 🍷

*Gary Tefft and his wife, Bonnie, authored Red Wing Potters & Their Wares. They were inducted into the RWCS Hall of Fame in 1999.*



WWW.REDWINGCOLLECTORS.ORG



Photos courtesy of Mark Youngblood



*The pair of figurines shown in the photos above was dug from an old Red Wing privy pit in 2011 by Mark Youngblood and Steve Showers. They are not chalkware, but bisque-fired stoneware clay, made from molds made using chalkware figurines as models. Once these molds were produced, it followed naturally that the boy’s basket would be replaced by a crock and the base remodeled to provide a taller tree stump to rest his elbow upon. Some included a molded dog I’d identify as a Whippet, but I’ve also seen at least one that looked like a mutt and appeared to be hand-modeled.*

*This porcelain Little Boy was manufactured by Belleek Pottery of Ireland. The design, with its companion girl, dates to the earliest days of production in the 1860s and was the basis for the chalkware versions.*

# TOGETHER AGAIN

## THE STORY OF THE 70 GALLON JUGS

Story by RWCS Newsletter  
Editor Rick Natynski



*Members of both the RWCS and the RWCS Foundation Board, Sheldon Bohnhoff and Louise Schleich pose next to the two 70 gallon jugs currently on display at the Pottery Museum of Red Wing. At 4 feet, Sheldon's jug is actually an inch taller than the jug Louise donated to the museum. His bid of \$17,000 won the jug at the 2014 RWCS Convention Auction. (Photo courtesy of Robin Wipperling, Pottery Museum of Red Wing Manager.)*

For years, the coveted 70 gallon jug, which is most likely the largest jug Red Wing ever made, was the centerpiece of the Schleich Red Wing Pottery Museum in Lincoln, Neb. It permanently moved back to its birthplace this spring when longtime RWCS Member Louise Schleich and her family donated the contents of the museum to the Pottery Museum of Red Wing.

Although it was reported that the 70 gallon jug was one of three that Red Wing made specifically for display at the 1923 Minnesota State Fair, most collectors believed until recently that the Schleich jug was the only one still in existence.

"The jug's survival is an amazing story in itself," Louise explains. In 1994, the 70 gallon behemoth was found partially buried in a barn on the Turec estate in Milligan, Neb. Mr. Turec collected steam engines, and as the story goes, he bought the jug in Minnesota when he traveled there to buy a steam engine he was interested in.

"One version of the story has him buying the jug for 50 cents," Louise says. "The second version has Mr. Turec being told that he would have to take the jug if he wanted the steam engine he was trying to buy. Either way, that's how it ended up in Milligan."

When the jug was sold at auction, the bidding was quite fierce, but Louise's late husband, Jerry, prevailed. The jug stayed in Nebraska, and it famously cost more than the couple's first home. It needed some major cleanup, but it looks as good as it did the day it was carted out of the factory.

Fast forward to 2011, when Illinois resident Bob Johnson and his

wife, Denise, stopped into a Western-themed shop in Fredricksburg, Tex while on vacation. Always looking for the old and unusual, Bob struck up a conversation with the woman who owned the shop and asked if she knew of anyone in town who had antiques for sale.

"The woman said she actually had a bunch of antiques in a storage unit that she'd sell, and we were welcome to take a look," Bob says. "She opened up the door, and there wrapped in bubble wrap and ratcheted to a dolly was a huge jug. It had a big crack, but I knew I wanted it the minute I saw it."

She told Bob that her father had owned a chain of hotels and displayed a lot of antiques in the lobbies. The jug was one of those antiques, and she figured he had purchased it about 50 years ago. When he died, she inherited everything and put it in storage. Her price for the jug? (We hope you're sitting down.) She wanted \$300.

Bob obliged, despite his wife thinking he was "a little crazy" for buying it. The Johnsons were about 1000 miles from home and they didn't have room in their truck, so Bob took it to a buddy who lived in Texas; he let him put it in his front yard until Bob could return.

While Bob and Denise have about 30 pieces of stoneware from the Illinois area, they aren't die-hard stoneware collectors and they didn't know much about Red Wing when they acquired the jug. But Bob is a fervent collector of antique guns, and he counts fellow gun collectors Richard Ellis and Gary Williams as friends – both of whom are also big stoneware collectors. So when he finally mentioned the jug to one of them, that set the wheels in motion. *Story cont'd on back cover*

# Red Wing Dinnerware & the Ebb Tide Line

© Copyright 2014 Terry Moe and Larry Roschen  
Photos courtesy of the authors and  
WWW.REDWINGDINNERWARE.COM

The information presented here has been gleaned from vintage Red Wing brochures, catalogs, price lists and internal documents as well as trade journals and magazines. In this discussion, a "pattern" is a dinnerware set in a particular shape with a unique handpainted design or color scheme. A "line" is a group of patterns that share the same shapes but have different handpainted designs or colors. Some of the introduction and exit dates presented have not been verified because of gaps in available documentation. When uncertain, an estimated date is provided. The end point of a pattern can be difficult to ascertain. In the 1940s and 1950s a discontinued pattern no longer appeared on price lists; in the 1960s patterns that were no longer in production remained on price lists as "limited stock" with only a few pieces listed. Here a pattern is considered to be discontinued when a full range of items was no longer available and orders were limited to remaining stock.

Each pattern has been assigned an Availability rating and a Collector Interest rating as described below. Availability represents an average for the pattern in question, however the scarcity of certain pieces within the pattern may differ. Collector Interest refers to the pattern in general, but there may be specific pieces in any pattern that are of greater interest to specialty collectors (teapots, pitchers, salt & peppers, etc). Please keep in mind these ratings are the authors' observations; your experience may vary.

### Availability

- 1 - Rare
- 2 - Very scarce
- 3 - Hard to find
- 4 - Average
- 5 - Readily available

### Collector Interest

- 1 - Highly sought, demand exceeds supply
- 2 - Primarily of interest to specialty collectors
- 3 - Above average
- 4 - Average
- 5 - Below average

## EBB TIDE Line

**Ebb Tide**      **Availability: 3**    **Interest: 4**      **Years: mid 1965-1967**

The Ebb Tide pattern, the only pattern in the line, was quite unusual. It included most pieces commonly found in a dinnerware pattern, but excluded several items that have strong appeal to collectors. The pattern did not include a pitcher, teapot, beverage server or salt & pepper shakers. But oddly enough, it did include coffee cups in two styles; with and without a handle. The Ebb Tide design was distinctive for its hand-applied greenish-brown swirls set against a dark background. So while the pattern involved hand painting of a sort, it was done by swirling the paint around on the piece rather than carefully applying brush strokes. This was likely another attempt to save labor costs. Workers apparently found it difficult to be consistent with the swirls, as the effect can vary greatly from piece-to-piece.



Above: Three sizes of Ebb Tide plates    Below: Bowls in three sizes



Ebb Tide creamer & sugar



Gravy boat



Covered butter



Casserole dish



Two versions of coffee mugs - with and without handle.

# The Big Game

FEBRUARY 6-8, 2015 • OCONOMOWOC, Wis.

The theme for the 2015 RWCS MidWinter Get Together is “The Big Game”! Scheduled for Feb. 6-8, 2015, this will be our first year at a new “stadium” – the Olympia Resort & Spa in Oconomowoc, Wis! To register, you can call the RWCS “Ticket Office” at 800-977-7927, visit [WWW.REDWINGCOLLECTORS.ORG](http://WWW.REDWINGCOLLECTORS.ORG) or mail in the form on the next page. Looking to trade or sell with your teammates? Sellers Tables are just \$35.

With our new location, which is about 30 minutes west of downtown Milwaukee, the RWCS Roster is in need of more volunteers to help with set-up, registration, the Show & Sale and more. Also, if you have some décor to lend for the “Friday Night Lights Tailgate Party” reception, please call the office or e-mail me at [SWEGNER@REDWINGCOLLECTORS.ORG](mailto:SWEGNER@REDWINGCOLLECTORS.ORG).

I hope to see you all at the BIG GAME in Oconomowoc, Wis! Whether you’re looking to add to your collection, sell some pieces or reconnect with old friends, this will be a game you can’t lose!  -Stacy Wegner, RWCS Executive Director

## LODGING

**Location:** Olympia Resort Phone: 800-558-9573 or 262-369-4999  
1350 Royal Mile Rd., Oconomowoc, WI 53066  
E-mail: [INFO@OLYMPIARESORT.COM](mailto:INFO@OLYMPIARESORT.COM) Web: [WWW.OLYMPIARESORT.COM](http://WWW.OLYMPIARESORT.COM)

**For reservations:** Call the hotel and indicate you are a Red Wing Collectors Society MidWinter attendee and/or a room seller.

**Deadline:** January 6, 2015 (Reservations made after Jan. 6 will be based on availability only)

### Types of Rooms:

Resort Guest Room \$79.<sup>00</sup>

Resort Suite \$179.<sup>00</sup>

Rates are per-night and do not include 11.1% tax. All rooms have a refrigerator, and all guests attending MidWinter will have free access to the resort’s spa.



## DEADLINES

Pre-registration: Jan. 13 (mail) & Jan. 15 (online)

Sellers Table Contract: Jan. 21

## MIDWINTER NAME

**BADGES** Back by popular demand, we’re having personalized name badges made for MidWinter!

Order one with your name on it (15 character limit) and pick it up in Oconomowoc. Made by Red Wing Stoneware Co., these stoneware badges will be \$9 each. A limited quantity will be available onsite at MidWinter for \$10 each. We’re still finalizing the design, but a sample is pictured above.



## SCHEDULE

*Times and room locations are subject to change. Visit the RWCS website for updates.*

### Friday, February 6

|                               |                 |                      |
|-------------------------------|-----------------|----------------------|
| Board of Directors Mtg.       | 8 a.m. - 3 p.m. | TBA                  |
| Registration                  | 1-8 p.m.        | Olympia Center Foyer |
| Room Sales                    | All day         |                      |
| RWCS Board Meet & Greet       | 3-5 p.m.        | TBA                  |
| Friday Night Lights Reception | 7-9 p.m.        | Olympia Center       |

### Saturday, February 7

|                              |                  |                      |
|------------------------------|------------------|----------------------|
| Registration                 | 7-10 a.m.        | Olympia Center Foyer |
| Continental Breakfast        | 7-8:15 a.m.      | Olympia Center       |
| Welcome/General Session      | 8-9:30 a.m.      | Olympia Center       |
| Education Seminars Session 1 | 9:40-10:30 a.m.  | Breakout Rooms       |
| Education Seminars Session 2 | 10:40-11:30 a.m. | Breakout Rooms       |
| Show & Sale                  | 1:30-4 p.m.      | Olympia Center       |
| Auction                      | 6 p.m.           | Olympia Center       |

### Sunday, February 8

|                                         |          |          |
|-----------------------------------------|----------|----------|
| Continental Breakfast                   | 7-9 a.m. | Room 208 |
| (Hosted by Badger & Wisconsin Chapters) |          |          |





# REGISTRATION FORM

## MIDWINTER GET TOGETHER

Feb. 6-8, 2015 Olympia Resort Oconomowoc, WI

### DEADLINES:

MAIL REG JANUARY 13, 2015

ONLINE REG JANUARY 15, 2015

SELLERS TABLE JANUARY 21, 2015

**ALL REGISTRATIONS AFTER DEADLINES WILL PAY THE ONSITE \$30 REGISTRATION.**

**MEMBER #1:** \_\_\_\_\_ MEMBER # \_\_\_\_\_  
 ADDRESS: \_\_\_\_\_  
 CHECK HERE IF YOUR ADDRESS HAS CHANGED. PHONE #: \_\_\_\_\_  
 EMAIL ADDRESS: \_\_\_\_\_  
**REGISTRATION (MEMBER #1):** ADULT = \$25 ONSITE = \$30 \_\_\_\_\_  
**CHILD REGISTRATION:**  KIDSVIEW \_\_\_\_\_  
 UNDER 15 FREE DATE OF BIRTH (MONTH/YEAR) \_\_\_\_\_  
**MEMBERSHIP:** PRIMARY = \$35 FOR 1 YR OR \$70 FOR 2 YRS \_\_\_\_\_  
 ASSOCIATE = \$15 FOR 1 YR OR \$30 FOR 2 YRS \_\_\_\_\_  
**TOTAL #1** \_\_\_\_\_

### SURVEY QUESTIONS MEMBER #1

MEMBER SINCE \_\_\_/\_\_\_/\_\_\_ AGE: \_\_\_ DOB \_\_\_\_\_  
**COLLECTING INTEREST** (CHECK ALL THAT APPLY):  STONEWARE  DINNERWARE  ART POTTERY  MEMORABILIA  OTHER \_\_\_\_\_  
**WOULD YOU LIKE TO RECEIVE INFORMATION FROM THE RWCS FOUNDATION?** YES NO  
**WHAT WAY WOULD YOU PREFER TO BE CONTACTED BY THE FOUNDATION (CIRCLE ONE)?** EMAIL MAIL BOTH NONE

**MEMBER #2:** \_\_\_\_\_ MEMBER # \_\_\_\_\_  
**REGISTRATION (MEMBER #1):** ADULT = \$25 ONSITE = \$30 \_\_\_\_\_  
**CHILD REGISTRATION:**  KIDSVIEW \_\_\_\_\_  
 UNDER 15 FREE DATE OF BIRTH (MONTH/YEAR) \_\_\_\_\_  
**MEMBERSHIP:** PRIMARY = \$35 FOR 1 YR OR \$70 FOR 2 YRS \_\_\_\_\_  
 ASSOCIATE = \$15 FOR 1 YR OR \$30 FOR 2 YRS \_\_\_\_\_  
**TOTAL #2** \_\_\_\_\_

### SURVEY QUESTIONS MEMBER #2

MEMBER SINCE \_\_\_/\_\_\_/\_\_\_ AGE: \_\_\_ DOB \_\_\_\_\_  
**COLLECTING INTEREST** (CHECK ALL THAT APPLY):  STONEWARE  DINNERWARE  ART POTTERY  MEMORABILIA  OTHER \_\_\_\_\_  
**WOULD YOU LIKE TO RECEIVE INFORMATION FROM THE RWCS FOUNDATION?** YES NO  
**WHAT WAY WOULD YOU PREFER TO BE CONTACTED BY THE FOUNDATION (CIRCLE ONE)?** EMAIL MAIL BOTH NONE

**MEMBER #3:** \_\_\_\_\_ MEMBER # \_\_\_\_\_  
**REGISTRATION (MEMBER #1):** ADULT = \$25 ONSITE = \$30 \_\_\_\_\_  
**CHILD REGISTRATION:**  KIDSVIEW \_\_\_\_\_  
 UNDER 15 FREE DATE OF BIRTH (MONTH/YEAR) \_\_\_\_\_  
**MEMBERSHIP:** PRIMARY = \$35 FOR 1 YR OR \$70 FOR 2 YRS \_\_\_\_\_  
 ASSOCIATE = \$15 FOR 1 YR OR \$30 FOR 2 YRS \_\_\_\_\_  
**TOTAL #3** \_\_\_\_\_

### SURVEY QUESTIONS MEMBER #3

MEMBER SINCE \_\_\_/\_\_\_/\_\_\_ AGE: \_\_\_ DOB \_\_\_\_\_  
**COLLECTING INTEREST** (CHECK ALL THAT APPLY):  STONEWARE  DINNERWARE  ART POTTERY  MEMORABILIA  OTHER \_\_\_\_\_  
**WOULD YOU LIKE TO RECEIVE INFORMATION FROM THE RWCS FOUNDATION?** YES NO  
**WHAT WAY WOULD YOU PREFER TO BE CONTACTED BY THE FOUNDATION (CIRCLE ONE)?** EMAIL MAIL BOTH NONE

### FOOTBALL STONEWARE BADGE - PROVIDE CUSTOM NAME FOR EACH BADGE BELOW—15 CHARACTER LIMIT

1. Name: \_\_\_\_\_ x \$9 = \_\_\_\_\_  
 2. Name: \_\_\_\_\_ # badge(s)  
 3. Name: \_\_\_\_\_  
 \*\*\*A LIMITED NUMBER OF GENERAL DESIGNS WILL BE AVAILABLE ONSITE FOR \$10

### SELLER'S TABLES (CHECK TYPE OF TABLE BELOW)

ANTIQUES (90% ANTIQUES)  SOUVENIRS (90% SOUVENIRS) \_\_\_\_\_ x \$35 = \_\_\_\_\_  
 # table(s) Price TOTAL  
 LIMITED SPACE, ALL TABLES ARE SOLD ON A FIRST-COME, FIRST-SERVED BASIS. CONTRACTS ARE AVAILABLE ON OUR WEBSITE OR VIA EMAIL. TO RECEIVE A PAPER CONTRACT, PLEASE ENCLOSE A SELF-ADDRESSED STAMPED ENVELOPE. **SIGNED CONTRACTS MUST BE RECEIVED BY JANUARY 21, 2015.**

### RWCS FOUNDATION DONATION (TAX DEDUCTIBLE) \$ \_\_\_\_\_

### NO ONLINE SERVICE FEES

### GRAND TOTAL \$ \_\_\_\_\_

**WAYS TO REGISTER**  
 1. **ONLINE:** www.RedWingCollectors.org  
 2. **PHONE:** 800-977-7927  
 3. **MAIL:** PO Box 50, Red Wing, MN 55066  
 4. **FAX:** 651-388-4042

**Method of Payment:**  
 VISA  MASTERCARD  DISCOVER  CHECK/CASH  
**NAME:** \_\_\_\_\_  
**CARD NUMBER:** \_\_\_\_\_  
**LAST 3 DIGITS ON BACK:** \_\_\_\_\_ **EXPIRATION DATE:** \_\_\_\_\_  
**SIGNATURE:** \_\_\_\_\_

Classified ads are 20¢ per word for members and 30¢ per word for non-members; \$4 minimum charge and are accepted on a first-come, first-served basis. In addition to appearing in the newsletter, classifieds and display ads are posted on the RWCS website.

### DISPLAY ADS

| Display Ad Size                            | 1x    | 6x  |
|--------------------------------------------|-------|-----|
| Full page                                  | \$425 | 385 |
| 1/2 page ( <i>horizontal or vertical</i> ) | 225   | 205 |
| 1/4 page                                   | 125   | 115 |
| 1/8 page                                   | 85    | 70  |

Display ads purchased by non-members cost an additional 15%.

### Display Ad Dimensions

|                                            |               |
|--------------------------------------------|---------------|
| Full Page                                  | 7 1/2 x 10    |
| 1/2 page ( <i>horizontal or vertical</i> ) | 7 1/2 x 4 1/2 |
| 1/4 page                                   | 3 5/8 x 4 7/8 |
| 1/8 page                                   | 3 5/8 x 2 1/4 |

Ads must be supplied electronically as an EPS or PDF file for PC. There is an additional 10 percent fee for design and makeup if needed (\$10 minimum).

### DEADLINES

| Issue    | Ads      | Editorial | Mail Date |
|----------|----------|-----------|-----------|
| February | Jan. 10  | Jan. 1    | Feb. 15   |
| April    | March 10 | March 1   | April 15  |
| June     | May 10   | May 1     | June 15   |
| August   | July 25  | July 15   | Aug. 31   |
| October  | Sept. 10 | Sept. 1   | Oct. 15   |
| December | Nov. 10  | Nov. 1    | Dec. 15   |

Make checks payable to RWCS and mail with ads:

Rick Natynski, PO Box 198  
Pewaukee, WI 53072

Ads can also be submitted by e-mail: send to [NEWSLETTER@REDWINGCOLLECTORS.ORG](mailto:NEWSLETTER@REDWINGCOLLECTORS.ORG) and send checks separately. Or, call Rick at 414-416-WING (9464).

### RED WING FOR SALE

Commemoratives: 1986-2013. Please make offers. Can be viewed in Beloit, Wis. Also have duplicates from several years. Call 608-921-1834.

1 gallon large wing crock, excellent condition, \$425; 3 gallon Imperial shoulder jug with wing, excellent condition, \$325. Will consider trades for Canadian Red Wing advertising. Contact Kelly in Canada at [CCCOLLECTOR@GMAIL.COM](mailto:CCCOLLECTOR@GMAIL.COM) or 204-981-9616.

Red Wing dinnerware plate collection. Over 100 different dinner plates. Excellent condition. Many with cups and saucers. No Bud or Labriego plates. Sold as a group. Pick up in the Iowa Great Lakes area. Contact [CHOREBOY@OUTLOOK.COM](mailto:CHOREBOY@OUTLOOK.COM). 10/14

Large Red Wing button-knob petal lid that measures about 22.5 inches in diameter. Can fit 25, 30 or 40 gallon crocks. One small chip. \$750. Mint 25 gallon squatty blue birchleaf crock with no oval, \$375. I also have many other wing and birchleaf crocks in good condition sizes 1-30 gallons and churns sizes 2-6 gallons. Looking for a damaged crock to use outside as a planter? I have many of those, too, sizes 5-20 gal. Located in SE Wisconsin. Will consider trades for Wisconsin adv. bean pots I don't have, such as Westby or Wittenberg, Wis. Contact Richard at [RNATYNSKI@FRONTIER.COM](mailto:RNATYNSKI@FRONTIER.COM) or 608-617-7424.

### RED WING WANTED

Wanted: NORTH DAKOTA! Looking for jugs, crocks, butter crocks and churns with advertising. Will pay top dollar for the right pieces. Contact [BEEHIVE@POLARCOMM.COM](mailto:BEEHIVE@POLARCOMM.COM) or 701-270-0242.

Wanted: Nokomis Elephant Planter #236C – 5" tall. Contact Steve Paul at 568-563-4398 or [SPAUL@MCHSI.COM](mailto:SPAUL@MCHSI.COM).

Wanted: "Early" Normandy, the first version of the Normandy pattern, with maroon and blue bands at the outer edge of the plates. Will buy or trade. Any condition considered. Also wanted: Ivanhoe pieces. Contact John at [SECRETARY@REDWINGCOLLECTORS.ORG](mailto:SECRETARY@REDWINGCOLLECTORS.ORG) or 612-861-0066.

Wanted: These Xmas advertising bean pots: Koehnkes - Clear Lake, SD; C & W Shafer - Branch, WI; Gjermundson Bros Hdwe - Wittenberg, WI. Any condition considered. Also looking for 9-inch blue and white panel bowl. Will consider any condition. Call 414-731-0218 or e-mail [REDWINGR@GMAIL.COM](mailto:REDWINGR@GMAIL.COM).

Wanted: Mini and salesman sample flower pots. Contact [COBE142@COX.NET](mailto:COBE142@COX.NET) or 402-331-4749.

Wanted: Red Wing #687 & M3006 vases especially blue/green Chromoline in mint condition. Contact Rick at 414-416-9464 or [NEWSLETTER@REDWINGCOLLECTORS.ORG](mailto:NEWSLETTER@REDWINGCOLLECTORS.ORG). Also seeking mint #675 blue/green Chromoline bowl. Will also buy damaged Chromoline in other shapes.



Houghton Auction Co. will sell the Don & Julie Diercks' 300+ piece collection of Red Wing stoneware, pottery, cookie jars, artware & dinnerware at 9:30 a.m., Saturday, Oct. 18, 2014 at the Byron Event Center, 505 Frontage Road NW, Byron, MN 55920. For list and photos, visit [WWW.HOUGHTONAUCTIONS.COM](http://WWW.HOUGHTONAUCTIONS.COM).

### RWCS MEMBER PASSING

RWCS Member Lauretta Jones died at home in White Bear Lake, MN on July 9; she was 86. She graduated from Monroe High School (Class of 1946) and worked many years for Deluxe Check Printers. Lauretta thoroughly enjoyed playing cards, lunches, dinners, theater, travel and collecting Red Wing. She is survived by five daughters, three granddaughters and many other friends and family.



Jones

## RWCS FOUNDATION AUCTION



PLUS MUCH MORE. FOR PHOTOS, VISIT [WWW.HOUGHTONAUCTIONS.COM](http://WWW.HOUGHTONAUCTIONS.COM)

### PROCEEDS TO BENEFIT THE POTTERY MUSEUM OF RED WING

9 a.m. Saturday, Nov. 8, 2014

Zumbrota VFW Hall 25 E 1<sup>st</sup> Street, Zumbrota, MN

ELEPHANT EAR CROCKS, SUCCESS FILTER TOP & BOTTOM WITH LID, BUTTER CHURN, SHOULDER JUGS, ASSORTMENT OF SAFFRON WARE, ASSORTMENT OF BOWLS, MINI JUGS, LILY COMMODE WITH COVER, SLEEPY EYE MUGS, ASSORTMENT OF ART POTTERY AND DINNERWARE, BRUSHWARE "OUR DAUGHTER CLARA CHRZANWSKI", TOYS, PRIMITIVES, ASSORTMENT OF BOTTLES, ADVERTISING PIECES, ASSORTMENT OF EYE WASH GLASSES, INSULATORS, COLLECTIBLES, FIGERINES, JERSEY 100# WOODEN COFFEE BOX, ZANZIBAR BRAND COCOA 100# WOODEN DRUM FROM B. HELLER & CO. CHICAGO, WATER COOLER STAND,

HOUGHTON'S AUCTION SERVICE • 1967 LAUNA AVE. RED WING, MN 55066

651-388-5870 • [WWW.HOUGHTONAUCTIONS.COM](http://WWW.HOUGHTONAUCTIONS.COM)

# RECENT FINDS & DEALS

Did you find a rare piece or a great deal worth sharing? Briefly describe the item, where it was sold, date purchased, venue (store, auction, etc.) and price paid. Send to editor Rick Natynski on a post card, e-mail [NEWSLETTER@REDWINGCOLLECTORS.ORG](mailto:NEWSLETTER@REDWINGCOLLECTORS.ORG), or enclose in an envelope if you'd like to include a photo for publication. Multiple submissions result in multiple entries in the Newsletter Special Commemorative Lottery at the 2015 Convention. All newsletter submissions received between July 2014 and June of 2015 are eligible whether published or not. Please keep submittals with purchase dates within six months of the newsletter issue.

| ITEM                                                                                             | LOCATION           | DATE | VENUE        | PRICE                  |
|--------------------------------------------------------------------------------------------------|--------------------|------|--------------|------------------------|
| Minnesota State Fair 1/8 Pint Fancy Mini Jug                                                     | St. Paul, MN       | 2/14 | Antique shop | \$14. <sup>00</sup>    |
| Red Wing M-5005 Compote                                                                          | Cottonwood, AZ     | 3/14 | Antique shop | \$15. <sup>00</sup>    |
| 5 gal "Single P" churn front-stamped "Minnesota Stoneware Co., piece broken out, but not missing | Milwaukee, WI      | 3/14 | Estate sale  | \$1. <sup>00</sup>     |
| Engobe Nude Lady with Lyre, mint                                                                 | Minnesota          | 3/14 | Thrift store | \$10. <sup>00</sup>    |
| RW pie plate w/Cadott, Wis. adv.                                                                 | Cuba City, WI      | 3/14 | Antique shop | \$80. <sup>00</sup>    |
| RW Albany slip Bulldog, tiny foot chip                                                           | Sioux Falls, SD    | 4/14 | Flea market  | \$50. <sup>00</sup>    |
| 1 gal plain zinc glaze jug & 1 gal brown top shoulder jug with Poison-Acid adv.                  | Chisago County, MN | 5/14 | Garage sale  | \$12. <sup>00</sup>    |
| 3 gal RW shoulder jug w/o oval                                                                   | Wyocena, WI        | 5/14 | Garage sale  | \$40. <sup>00</sup>    |
| Green "Win Twins" ashtray                                                                        | St. Paul, MN       | 6/14 | Auction      | \$517. <sup>50</sup>   |
| 6" RW Cherryband pitcher                                                                         | Adams, WI          | 6/14 | Flea market  | \$20. <sup>00</sup>    |
| Red Wing Birch Bark Vase                                                                         | Stillwater, MN     | 9/14 | Antique shop | \$30. <sup>00</sup>    |
| Wheatland, IA adv. butter crock, hairline                                                        | Dubuque, IA        | 9/14 | Auction      | \$1,850. <sup>00</sup> |



Well here's something you don't see everyday! RWCS Member Larry Schwartz bought this 50 gallon birchleaf crock back in June. He wasn't able to make it to Convention to pick it up, so it was delivered to him at the Walnut, IA Antique Fall Festival in September. Fellow RWCS Member Scott Spominato helped load it into his car, answering the age old question: "Will a 50 gallon crock fit in the trunk of a Mercury Grand Marquis?" As for getting it out, Larry said it was a lot easier than he expected it would be.



This cute little 1/2 gal hand-turned Red Wing jug with Kansas City adv. sold for \$2,350 on eBay back in September.



This rare bottom-signed 1 gal Red Wing bail-handled jug with Excelsior Springs adv. sold for an astounding \$4,750 at an auction in Excelsior Springs, Mo. in April.



It had been awhile since a high-end piece of salt glaze sold on eBay. Front-stamped "Red Wing Stoneware Co.", this mint 6 gal butterfly cooler sold in September for \$10,201.99 plus shipping.



This seldom-seen animal feeder sold on eBay for only \$25 plus shipping in August. The advertising reads: "Wisconsin-Minnesota Salt Cup, Patent Applied for, Manufactured by Siren Dairy Association, Inc. Siren, Wisconsin."

"As soon as I told Gary and Richard about it, I started getting calls everywhere from Florida to New York to out West," Bob recalls. "I didn't know what it was worth, so I never priced it to anybody."

Soon Bob learned about the 70 gallon jug that was in the Schleich Museum. Then he got an idea of its value and looked for someone who could restore it. He was referred to RWCS Member Kevin Williams in Iowa, and after it sat in his friend's yard for two years, Bob went down to Texas to pick up the jug. He took it directly to Kevin.

"I first learned about the jug when Bob left me a voice message, saying he had a 70 gallon jug for repair," Kevin explains. "Knowing that the terms 'crock' and 'jug' often interchange in some folk's language, I thought he surely had a crock."

After playing phone tag, Bob assured Kevin that he indeed had a jug that said "Red Wing" on it. Kevin knew about the Schleich jug, but at the time didn't know the story well enough to know that there was the possibility of a second or even a third example.

Upon delivery to Iowa, Kevin looked over the jug, which had a large piece broken out of it, and gave Bob a quote.

"I told him to take as much time as he needed," Bob says. "I wanted Red Wing collectors to have a chance to see it, so I decided to put it into the Convention Auction when it was done instead of selling it privately."

Kevin made a trip to the Schleich Museum, and lo and behold, the jugs were a match. From there he planned how to restore the massive piece. First, he built a saddle out of eight castor wheels on a large, rolling newspaper pallet so that it could lay horizontally and be rotated in place during the restoration process.

"Surprisingly, this worked exactly as I had envisioned," Kevin explains. "Part of the bottom had been lost years ago and the hole was patched with concrete. I carefully removed that, and I also took off the large piece on the front that had broken free sometime in the past."

Kevin found that the jug had been used as a trash receptacle over the years. When he cleaned it out, he found five Lincoln pennies that dated from 1940 to 1965.



"When the side was reinstalled, I ground six grooves inside to rejoin the two pieces and steel rods epoxied inside those grooves," he says. "In my mind, the hole in the

bottom needed to be filled with as much authentic stoneware as possible. So, I cut a 15 gallon crock bottom and filled most of the space with that. The rest is like my normal restorations only on a much grander scale."

Kevin told Bob in early 2014 that he'd have it done in time for the July Convention, but due to some miscommunication, it was never officially entered into the auction. Fortunately RWCS Auction Manager Bruce Selfridge was happy to add it when Kevin delivered it during Convention Week. It hammered down for \$17,000 – the highest price paid for a piece in the RWCS Auction in quite some time. The winner, RWCS Member Sheldon Bohnhoff, couldn't be happier.

"I thought it was an intriguing piece," Sheldon says. "I'm into oddball pieces from little to big; I guess you can't get much bigger than that."

Sheldon wasn't prepared to haul a 70 gallon jug back home to North Dakota. So, he decided to put it on temporary loan in the Pottery Museum of Red Wing. He's glad he did, as there have been many positive comments from museum visitors about seeing the two 70 gallon jugs side-by-side. So, he's keeping it there for another year or so, so more people have a chance to enjoy it.

As for the jug's former owner, Bob Johnson attended the auction; it was the first time he got to see the piece restored.

"Kevin did a great job on the restoration," Bob says. "I thought it would sell for a little more, but I was very pleased with the results. Now I'm gonna go look for the other one."

Bob brings up an interesting thought, of course. Since three of these jugs were made, the third is out there somewhere. Is it resting in a dump somewhere, broken into pieces? Or is it a long-forgotten relic just sitting in an old barn, waiting to be rediscovered? We hope it's the latter.



The caption for this photo, which likely dates to 1923, reads: "When the photographer asked Geneva Swanson, Red Wing, to hold a jug in each hand she made a face as long as from St. Paul to Chicago. However she consented to hold the two ounce jug. The big one holds seventy gallons. Both are manufactured by the Red Wing Union Stone ware Co."

## COMING IN THE DECEMBER ISSUE...



XMAS ADVERTISING  
BEAN POTS



CERAMASTONE

WWW.REDWINGCOLLECTORS.ORG