



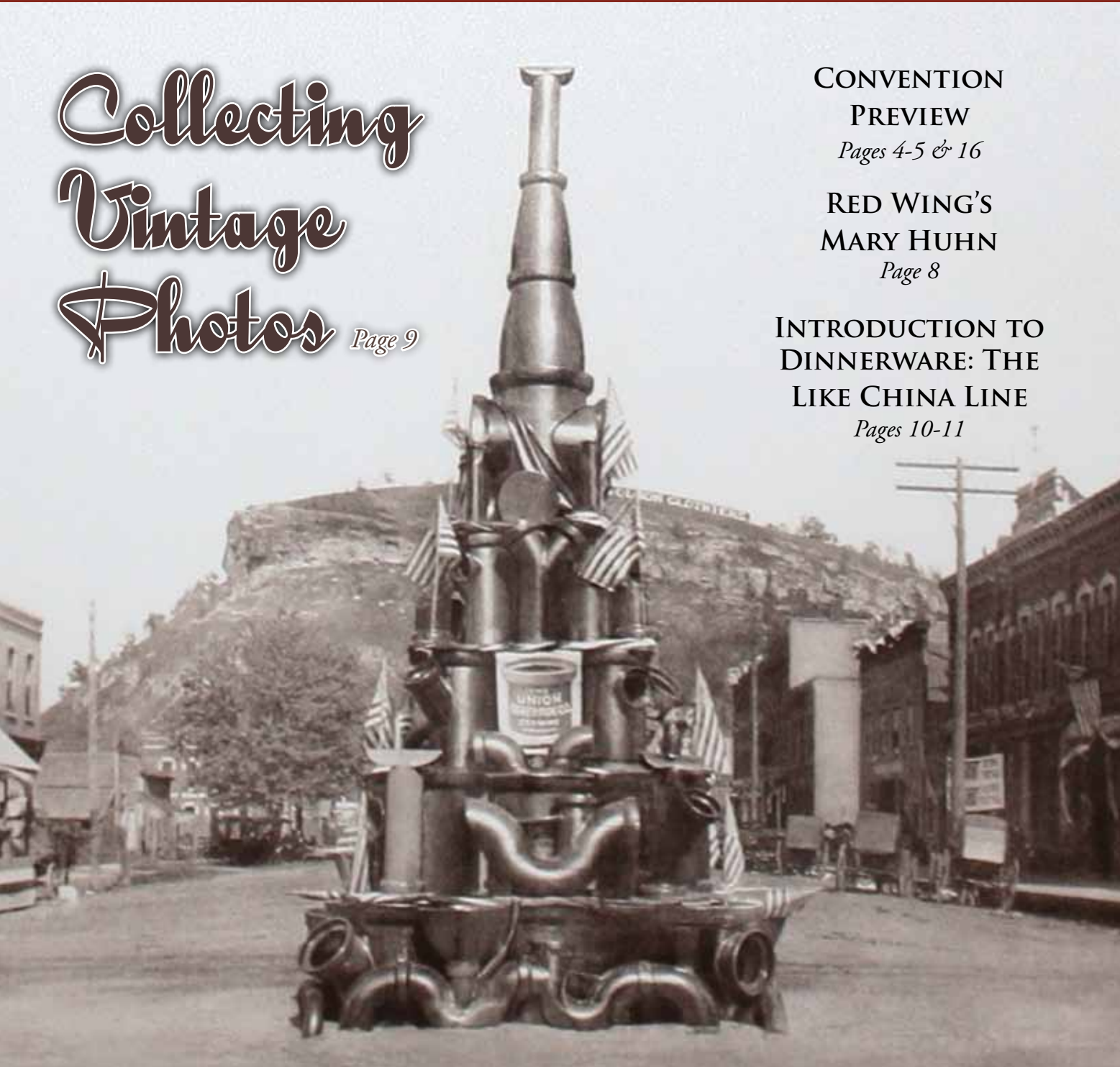
VOL. 39 NO. 3      N E W S L E T T E R      JUNE 2014

# Collecting Vintage Photos *Page 9*

CONVENTION  
PREVIEW  
*Pages 4-5 & 16*

RED WING'S  
MARY HUHNS  
*Page 8*

INTRODUCTION TO  
DINNERWARE: THE  
LIKE CHINA LINE  
*Pages 10-11*



# RWCS CONTACTS

## RWCS BUSINESS OFFICE

PO Box 50  
240 Harrison St. • Unit #3  
Red Wing, MN 55066-0050  
651-388-4004 or 800-977-7927 • Fax: 651-388-4042  
EXECUTIVE DIRECTOR: STACY WEGNER  
EXECUTIVEDIRECTOR@REDWINGCOLLECTORS.ORG  
MEMBERSHIP@REDWINGCOLLECTORS.ORG  
Web site: WWW.REDWINGCOLLECTORS.ORG

## BOARD OF DIRECTORS

PRESIDENT: DAN DEPASQUALE  
2717 Driftwood Dr. • Niagara Falls, NY 14304-4584  
716-216-4194 • PRESIDENT@REDWINGCOLLECTORS.ORG

VICE PRESIDENT: ANN TUCKER  
1121 Somonauk • Sycamore, IL 60178  
815-751-5056 • VICEPRESIDENT@REDWINGCOLLECTORS.ORG

SECRETARY: JOHN SAGAT  
7241 Emerson Ave. So. • Richfield, MN 55423-3067  
612-861-0066 • SECRETARY@REDWINGCOLLECTORS.ORG

TREASURER: MARK COLLINS  
4724 N 112th Circle • Omaha, NE 68164-2119  
605-351-1700 • TREASURER@REDWINGCOLLECTORS.ORG

HISTORIAN: STEVE BROWN  
248 Cannon View Dr. • Red Wing, MN 55066  
920-629-0970 • HISTORIAN@REDWINGCOLLECTORS.ORG

REPRESENTATIVE AT LARGE: RUSSA ROBINSON  
1970 Bowman Rd. • Stockton, CA 95206  
209-463-5179 • REPATLARGEWEST@REDWINGCOLLECTORS.ORG

REPRESENTATIVE AT LARGE: JERRY ERDMANN  
W15416 Fair-Morr Rd. • Tigerton, WI 54486  
715-535-2094 • REPATLARGEEAST@REDWINGCOLLECTORS.ORG

AUCTION MANAGER: BRUCE SELFRIDGE  
PO Box 1266 • Healdsburg, CA 95448  
707-431-7753 • AUCTION@REDWINGCOLLECTORS.ORG

COMMEMORATIVE MANAGER: BOB MORAWSKI  
2130 S. Ridgeway Dr. • New Berlin, WI 53146  
262-853-8269 • COMMEMORATIVE@REDWINGCOLLECTORS.ORG

EDUCATION MANAGER: GLENN BEALL  
215 W. 7th St. • Logan, IA 51546-1221  
712-644-2256 • EDUCATION@REDWINGCOLLECTORS.ORG

JULY CONVENTION SUPPORT PERSONNEL:  
Pre-registration – JIM & KAREN KEYS  
HEIDI HAHLEN

Show & Sale – DALE ERICKSON, 507-645-6771  
SHOWANDSALE@REDWINGCOLLECTORS.ORG

Display Room – LAURA BEALL, 605-464-5941  
DISPLAY@REDWINGCOLLECTORS.ORG

# IN THIS ISSUE.....



PAGE 3	NEWS BRIEFS, ABOUT THE COVER
PAGE 4	2014 CONVENTION PREVIEW
PAGE 5	2014 CONVENTION SCHEDULE HIGHLIGHTS
PAGE 6	WIRTH EVERY PENNY – CEDARBURG'S WIRTH DEPT. STORE
PAGE 7	NEWS FROM YOUR <b>NEW</b> RED WING POTTERY MUSEUM
PAGE 8	SOMETHING ABOUT MARY – RED WING'S MARY HUHN
PAGE 9	COLLECTING VINTAGE PHOTOS
PAGE 10	CHAPTER NEWS, INTRO TO DINNERWARE: LIKE CHINA
PAGE 13	CONVENTION WEEK EVENTS IN RED WING
PAGE 14	CLASSIFIED ADS
PAGE 16	CONVENTION AUCTION PREVIEW

## MEMBERSHIP

A primary membership in the Red Wing Collectors Society is \$35 annually and an associate membership is \$15.

There must be at least one primary member per household in order to have associate membership. Members can pay for more than one year when renewing their membership. Contact the RWCS Business Office for additional details.

## NEWSLETTER EDITOR

RWCS MEMBER RICK NATYNSKI  
PO Box 198  
PEWAUKEE, WI 53072

NEWSLETTER@REDWINGCOLLECTORS.ORG • 414-416-WING (9464)

The Red Wing Collectors Society, Inc. Newsletter is published bi-monthly by the Red Wing Collectors Society, Inc. • 240 Harrison St. • Unit #3 • Red Wing, MN 55066.

Phone: 651-388-4004 Fax: 651-388-4042

WWW.REDWINGCOLLECTORS.ORG



YouTube



areavoices



Postmaster: Send address change to: Red Wing Collectors Society, Inc. Newsletter  
PO Box 50 • Red Wing, MN 55066. USPS 015-791; ISSN 1096-1259.



Copyright © 2014 by the Red Wing Collectors Society, Inc. All rights reserved. The Red Wing Collectors Society, Inc. does not guarantee the accuracy of articles submitted by individual members.

# NEWS BRIEFS

## DISPLAY ROOM LACKING ENTRIES FOR 2014

We had some great competition in the Display Room at last year's RWCS Convention, but right now it's looking pretty thin for 2014. As of late May, I had yet to receive a completed Display Agreement from any RWCS member. If you're planning on setting up a display this year, please contact me right away. Recently I've awoken in a cold sweat after having a nightmare in which Convention attendees visited an empty Display Room that was oddly still staffed by a security guard. Please don't let this happen! Red Wing turned out thousands and thousands of pieces when the Potteries were in operation and many of you have large collections. I'm positive that several members out there are reading this right now, knowing that they can create an exceptional display. Please do it! Remember, anyone who sets up a display will receive a 2014 RWCS Commemorative (except for Rare Item submissions). And, the winning displays are awarded a Special Commemorative, which makes for a great trophy.

Display Room categories consist of Art Pottery, Stoneware, Dinnerware, Memorabilia and Art Pottery. If you're ready to join in the fun, contact me at [DISPLAY@REDWINGCOLLECTORS.ORG](mailto:DISPLAY@REDWINGCOLLECTORS.ORG) or 605-464-5941 for full rules, information and a Display Agreement. Thanks! -*Laura Beall, RWCS Display Room Chair*

## "VISIT THE VAULT" IS BACK AGAIN!

New Goodhue County Historical Society Executive Director Dustin Heckman and the rest of the museum staff invite RWCS members to visit their vault on Thursday, July 10. Tours will be offered every 30 minutes starting at 1 p.m. The last time slot will be 3:30 p.m. Participants need to arrive at least 15 minutes early and each tour will be limited to 15 people. Participants should register at the front desk upon arrival and may peruse the exhibits while waiting for their time slot. The Goodhue County History Center is located in Red Wing at 1166 Oak Street and admission is free to RWCS members during Convention Week.

## YOUNG COLLECTORS ITINERARY

We hope you're making the trip to see us this summer in Red Wing. There will be many new and exciting things to do during Convention!

**5 p.m. Wednesday, July 9:** Meet at the new Red Wing Pottery Museum and assist with the Wine-ing for Red Wing fundraising event.

**10 a.m. Thursday, July 10:** Meet in front of the Red Wing High School Art Room for the hike up Barn Bluff. Make sure you bring bug spray and wear shoes (no flip flops!) and clothing suitable for hiking up the bluff. We will enjoy a picnic lunch with a view of beautiful Red Wing before hiking down and returning around 12:30 p.m. In the event of rain, we will go bowling and tour the new Red Wing Pottery Museum. Join us!

(Participants who want to help with KidsView activities on Thursday afternoon will have an opportunity to do that, too!)

**10 a.m. Friday, July 11:** Meet in the RWHS Art Room. Back by popular demand, we're throwing on the potter's wheel! Potters and Golden State Chapter members Frank Sheldon and Mike Robinson will once again teach technique and design principals to help you create your own piece of pottery! Your piece will be fired and mailed to you after Convention.

Questions? Contact Wendy Calliccoat at [CROCKS701@AOL.COM](mailto:CROCKS701@AOL.COM) Watch for Facebook posts and tweets! Can't wait to see you at Convention!



## ABOUT THE COVER

Way back when downtown Red Wing's Main Street wasn't congested by automobiles, the Union Sewer Tile Co. set up this impressive display of its products. Fortunately the photo above was taken and still exists today, or else it would be hard to believe that this was ever accomplished. It begs the question, did the company need to request permission to do this, or did the two-story tower of sewer tiles just appear one day?

This photo could date as early as 1896, when the John H. Rich Sewer Pipe Works joined with the Red Wing Sewer Pipe Co. to form Union Sewer Pipe Co. It likely wasn't taken after 1901, as the companies formally merged in 1901 under the Red Wing Sewer Pipe Co. name, according to *Red Wing Potters & Their Wares*.

Check out the pictorial on page 9 to see how collecting old pottery-related photos can be a fun way to complement your collection. And be sure to read all the articles on this year's Convention, which is right around the corner. You can rest assured that Main Street won't be blocked by a large stoneware display, although that would be pretty cool. 🍷

**The Red Wing Collectors Society Foundation  
invites you to join in the annual event at the NEW  
Red Wing Pottery Museum: "Wine-ing**

**for Red Wing"**

**6 to 9 p.m. Wednesday,  
July 9, 2014**

### Featuring:

- Wine, Beer and Hors d'oeuvres provided by the St. James Hotel & West End Liquor
- Live music by Karl Burke
- Live auction, raffle and silent auction to benefit the RWCS Foundation

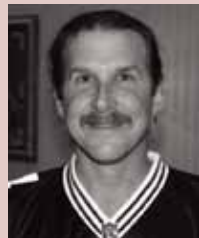
### Auction Highlights:

- Handmade Lunch Hour pieces painted by actual former Red Wing Potteries painters
- Original piece of D'ART from Don Short of DIY Network's "West End Salvage"
- Tickets to Green Bay Packers & Kansas City Chiefs
- Deer Hunting Trip for two to Southwest Missouri
- Several custom-designed pieces of stoneware specifically made for the Museum Grand Opening, including a one-of-a kind 1 gallon blue banded pickle jar with lid made by W.A. Painter Pottery Works

...and lots more! Let's support our Museum!!

*All donations are  
tax deductible!*

CONVENTION 2014:  
DESTINATION RED WING  
JULY 10-12



BOB  
MORAWSKI  
*Commemorative  
Manager*

Since selecting the Red Wing Stoneware Co. to produce the 2014 RWCS Commemorative back in January, the potters there have been hard at work. I'm excited with the progress they've made so far and I'm sure it will be a success! As a special offering this year, the Commemorative Pickup session from 1 to 4 p.m. on Thursday, July 10 will be held at Red Wing Stoneware, 4909 Moundview Dr. It will be a fun opportunity for members to check out their facility. All other pickup sessions will be at the high school as usual. Remember, you must be registered for Convention to pick up your commemorative, whether you pick it up from the high school or Red Wing Stoneware.

Just like last year, orders for this year's accessory piece that goes with the commemorative are very high. As a reminder, only a small amount of accessory pieces will be available at Convention. If you didn't pre-order an accessory piece and decide at Convention that you want one, buy it as soon as possible. We will sell out! Accessory pieces are not available with mail order commemoratives.

I will have large versions of the commemorative with an accessory piece for auction at the Thursday Night Auction, Crockfest, Annual Business Meeting and Banquet. We will also once again have a number of silent auctions going in the Commemorative Room, which will include some very limited pieces relating to this year's commemorative.

Although Maple City Pottery has unfortunately gone out of business, we were fortunate to secure their longtime artist, Melissa Giles, to do the artwork on the 2 gallon RWCS Chapter pieces. She's done an incredible job in the past, so you can look forward to the same quality work on this year's pieces, which are water coolers with lids. As usual, these chapter pieces will be silent-auctioned in the Red Wing High School (RWHS) cafeteria. See you in Red Wing in July!



GLENN  
BEALL  
*Education  
Manager*

It's time for another RWCS Convention and I couldn't be more excited! I'm happy to announce that we'll once again have a lot of variety to offer in terms of educational presentations.

The fun will kick off at 10:30 a.m. on Thursday, July 10 in the Red Wing High School Auditorium. With

Story by Stacy Wegner, RWCS Executive Director

Wow...Convention is less than a month away! Are you excited? Here's a bunch of information regarding different Convention activities. But first, a huge "THANK YOU" goes out to our sponsors this year: Red Wing Pottery, Red Wing Stoneware and Larry's Jugs Antiques. Their financial support is immensely appreciated!

SPONSORED  
BY:



**larry's jugs  
ANTIQUES**

**Early Bird Winner:** Congratulations to RWCS Member Dennis Wells, who won the 2014 Special Commemorative in the Early Bird Drawing. There are still other opportunities to win a Special Commemorative: volunteer drawing, Annual Business Meeting attendance, set up a winning Display, win the silent auction in Commemorative Room and attend the Banquet. Remember, if you haven't preregistered for Convention, you can still register onsite in person.

**Gift Basket Auction:** The RWCS Chapters have been busy assembling goody baskets that represent their states. These baskets will be silent-auctioned during Convention in the Red Wing High School (RWHS) Courtyard Café. Winners will be announced at the Annual Business Meeting.

**Hands-on Classes:** Potter Richard Spiller has expanded his session times and slots for design and creation! This year you will have three options: 4 inch crock, two 6 inch tiles or the new 12 inch tile. Check the RWCS website for a new info video on how the sessions work. There is still time to sign up for the pottery making class at RWHS on Thursday and Friday. Just \$40 includes your instructor time, piece(s), shipping and handling. Visit the "Hands on Education" page on the RWCS website to learn more.

**Shared Interest Groups:** Thank you to RWCS Members Terry Moe and Larry Roschen for volunteering to host a table on dinnerware in the RWHS Courtyard Café on Thursday! If you would like to visit with fellow members who share your same interest, this is your chance to do so. Contact RWCS Education Manager Glenn Beall to start a table.

**Convention Supplement & Red Wing Chamber Guest Pass:** In an effort to go green, the RWCS Convention Supplement will be your resource for all Convention news. Be sure to pick up yours at the Registration Table. The Red Wing Chamber Guest Pass will be inserted into the Supplement along with all kinds of discounts and promotions.

**Annual Crock Hunt:** The 2014 Crock Hunt will have a number of new sites in Red Wing this year! The Crock Hunt starts Friday, July 4. Turn in completed forms at the

all the developments from the new Red Wing Pottery Museum, who better to give the keynote presentation than members of the RWCS Foundation Board? They'll come at you with lots of interesting information, so be sure to be there!

Members will again have the opportunity to participate in hands-on pottery classes from local master potter Richard Spiller on Thursday and Friday. This year, Richard has expanded his offerings. For more info, visit the RWCS website.

Shared Interest Groups will take place from 2:30 to 3:30 p.m. Thursday in the Red Wing High School Courtyard Café. Come show off your favorite piece, new find at Convention or photos of your collection. Talk with other RWCS members that share your specific Red Wing collecting passion for dinnerware, stoneware or art pottery. This is your time to swap stories, ask questions and network with other RWCS members who share your interests.

RWCS Member Catherine Beall will once again present an orientation for first-timers on Thursday and Friday, discussing all the activities and offering tips on making the most of your Convention experience.

Friday's educational sessions will also include "True China Line & Recent Dinnerware Updates" from Larry Roschen and Terry Moe, and "Collecting Zinc Glaze" by Larry Peterson and Steve Poeschl. Bob Kubes will discuss the importance of insuring your

# SCHEDULE OF CONVENTION HIGHLIGHTS

View the entire 2014 Convention Schedule online at [WWW.REDWINGCOLLECTORS.ORG](http://WWW.REDWINGCOLLECTORS.ORG)

**Wednesday, July 9:** Board of Directors Meeting – 7 a.m. to noon, RW High School (RWHS)  
RWCS Foundation Wine & Cheese Fundraiser – 6 to 9 p.m., Pottery Place Annex

**Thursday, July 10:** Commemorative Pickup – 8 to 10 a.m. (RWHS), 1 to 4 p.m. (RW Stoneware)  
Young Collectors Program – 10 a.m. to 1 p.m., Meet outside RWHS Art Room  
Hands-on Pottery Classes – 10 a.m. to 3 p.m. RWHS Café  
Welcome Session/Keynote Presentation – 10:30 a.m. to noon, RWHS  
KidsView Seminars and Auction – 1 to 3:30 p.m., RWHS  
Visit the Vault - Every ½ hour between 1 and 3:30 p.m., Goodhue County Museum  
Shared Interest Groups – 2:30 to 3:30 p.m., RWHS Café  
Display Room open – 3 to 7 p.m., RWHS  
Auction – 4:30 p.m., RWHS

**Friday, July 11:** Display Room open – 8:30 a.m. to 3 p.m., RWHS  
Commemorative Room open – 9 to 10:50 a.m., 1:30 to 3 p.m., RWHS  
Young Collectors Program – 10 a.m. to noon, RWHS Art Room  
Hands-on Pottery Classes – 10 a.m. to 3 p.m. RWHS Café  
Adult Educational Seminars – 10 a.m. to 2:50 p.m., RWHS  
KidsView Seminars – 10 a.m. to 2:20 p.m., RWHS  
Annual Business Meeting – 3:15 p.m., RWHS  
**CROCKFEST!** – 5 to 9 p.m., Central Park (Sponsored by RW Stoneware & RW Pottery)

**Saturday, July 12:** Commemorative Room open – 8 a.m. to 1 p.m., RWHS  
Display Room open – 8 a.m. to noon, RWHS  
Show & Sale – 9 a.m. to 1:30 p.m., RWHS Gym  
Banquet – 5:30 p.m., Meatheads Meats & Deli (Pottery Place Annex)

**Show & Sale.** We will once again have two prize levels: one for those who visit more than half of the sites and one for those who complete less than half. Entry forms will be available for download on the RWCS website, e-mailed to attendees and printed in the *Supplement*.

**Facebook Submitter Needed:** The RWCS would like to find a member who would be interested in blogging about Convention on Facebook while the event is taking place. If you are interested, please contact Stacy Wegner.

**Crockfest sponsored by Red Wing Stoneware and Red Wing Pottery:** Join us from 5 to 9 p.m. on Friday, July 11 in Central Park for music by the Generations and food from Meatheads Meats & Deli, Liberty's Restaurant and Lounge and Brickhouse Pub & Grill. Bring a chair or a blanket to sit on and have some fun in Central Park. Thanks to RWCS members Todd & Nora Avery for heading up set up for this event. If you are interested in helping, please contact Stacy in the office.

**Show & Sale:** There are still open spots for dealers at the Convention Show & Sale on Saturday, July 12. Tables are just \$45. Call the office to secure a spot.

**RWCS Pre-Registration:** Pre-registration will be at the Pottery Place Annex on Wednesday, July 9. The Pre-Registration team will be there to distribute badges and *Convention Supplements* and answer your Convention questions. Check the attendee e-mail blast later this month for more details.

*Continued on page 13*

collection and author Fred Johnson will present "The Sea Wing Disaster: Tragedy on Lake Pepin" in conjunction with the anniversary of the sad event, which occurred on July 13, 1890.

Master Kiln Builder Donovan Palmquist (Farmington, Minn.) will talk about creating salt and zinc glaze kilns. The folks from Red Wing Stoneware will talk about creating the 2014 RWCS Commemorative and Nancy Lambert will talk about the challenges she faced when creating the new Kansas/Missouri advertising stoneware book. As always, Steve Showers, Dennis Nygaard, Connie Mathison and Paul Boudin will each present sessions on their finds from the Red Wing Pottery Dump. A popular carryover from the MidWinter GetTogether, Mark Wiseman will talk about the history of the potteries that operated in Eldora, Iowa from 1860 to 1892. And last, but certainly not least, representatives from the RWCS Foundation Board will return to answer questions and talk more about the new Red Wing Pottery Museum. Looking forward to seeing you in Red Wing this July!



## KidsView to Explore Design

KidsView participants, volunteers and fans will learn about "Designing and Creating Red Wing" at the KidsView seminars in July. We will hear all about designing and working at Red Wing from those who lived it. Do you know who Belle Kogan and Charles Murphy were? Did you know that we have RWCS members who actually worked at the Potteries in the 1960s?

**KidsView 2014 will include:**

**Thursday:** Make your own stoneware with longtime volunteer RWCS Member Mike Robinson; "Paint your Plate" with artists from Red Wing Art Reach; presentations by the designers.

**Friday:** Professional potters from the Northern Clay Center (NCC) Clay Mobile will offer two 2-hour sessions (10 a.m. to noon and 12:45 p.m. to 2:45 p.m.) for 25 students each. Participants will learn first-hand from NCC potters how to hand-build an engobe decoration that they will apply to their "Red Wing" inspired piece. Pieces will be fired and mailed to students following Convention. KidsView participants will be assigned a time slot.

Thank you to all the generous donations of Red Wing pieces for the KidsView program. The program is being planned to include a Dump Dig and Show & Sale activities for the kids. **Please consider donating a piece of Red Wing for these events.** Donations may be brought to Red Wing High School on Thursday or Friday of Convention Week. And sellers, if you find you have a few pieces left at the end of Convention that you don't want to tote home, bring them in on Saturday and we'll use them next year.

Please remember to pre-register for KidsView seminars! We want to make sure supplies are available for all students, and some events are limited to 50 students.

Finally, KidsView is still in need of volunteers to help with all the different activities. If you can give us some of your time, we can make it even more fun for KidsView participants! Come to the Red Wing High School Art Room on Thursday or Friday. You will discover how rewarding it is to help cultivate the children's excitement and learn about Red Wing. See you in July! -RWCS Executive Director, Stacy Wegner



# Wirth Every Penny

## CEDARBURG'S WIRTH DEPARTMENT STORE

*In addition to the 7-inch cap bowl pictured above, Wirth's also commissioned Red Wing to make a 7-inch sponge panel bowl, which says "It pays to mix with Wirth's - Cedarburg, Wis."*

In 1846, a man named J.P. Wirth emigrated from Bavaria and was hired at a shoe repair shop in Cedarburg, Wis. Nineteen years later he formed a partnership with his son Charles and opened Wirth's General Store, which eventually grew to become the largest department store in Wisconsin's Ozaukee County, which borders Milwaukee County to the north.

Popular with those who lived in and around the town of Cedarburg, good cash flow allowed Wirth's to erect new building in 1870. By 1948, Wirth's Department Store was being operated by the third generation of the Wirth family and a large addition was constructed.

An IGA grocery store was one of several departments that occupied the first floor of Wirth's in the 1940s and 50s. In addition to groceries, dry goods, men's clothing and shoes were sold on the 1<sup>st</sup> floor. The shoe department was managed by "Utz" Wirth. Women's and children's clothing could be found on the 2<sup>nd</sup> floor.

As a John Deere dealer, Wirth's also sold farm implements. Edgar Wirth was in charge of the service department and is pictured in the photo at right with other department employees.

The department store closed in 1972, but Wirth's still exists to this day as a commercial and residential real estate business led by Gus Wirth, who also serves as the Ozaukee County Board supervisor. The former department store building still stands on historic Washington Avenue - Cedarburg's popular tourist attraction. The building was home to a furniture store for many years before becoming an art glass studio and now a fitness center.

*Photos and historical information courtesy of [www.co.ozaukee.wi.us/history](http://www.co.ozaukee.wi.us/history).  
Story lead provided by RWCS Member Jerry Mounts.*



*Above: Wirth's extensive shoe inventory. Below: The service department, led by Edgar Wirth (left).*



# NEWS FROM YOUR NEW RED WING POTTERY MUSEUM

Story by Nancy Lambert, RWCS Foundation Fundraising Chairperson



The amount of time and energy that is going toward the Red Wing Pottery Museum right now is mind-boggling. In anticipation of the Grand Opening celebration – July 9, 2014 during Convention Week – museum project manager Larry Peterson has spent many days and nights organizing and planning the final stages of completion.

The massive Schleich Red Wing Pottery Museum in Lincoln, Neb. needed to be packed up and brought to Red Wing. Hundreds of cartons and boxes and miles of bubble wrap were carted to Lincoln. Every weekend in April, and a few weekdays in between, volunteers were either packing up items, driving the 7-hour trip between towns, or unloading, unpacking and sorting thousands of pieces of stoneware, art pottery and dinnerware. Every single volunteer deserves a big “thank you” from all of us.

The showcases have been put in place and the last load from Lincoln arrived on May 21. Larry says he was grateful for rain showers that week, because even more people volunteered than expected. He even had to go out and get more doughnuts for his helpers!

It is amazing how many people have sent in their donations and pledges in response to the fundraising mailing that everyone received in early April. If you have not had a chance to donate, please take some time and get yours sent in to make sure you are a “founding member” of Friends of the Red Wing Pottery Museum. Please notice the different levels of giving in the chart at right.

Our wonderful new Red Wing Pottery Museum relies on donations; we have a building to pay for as well as overhead expenses such as heating, cooling, lights, security and a staff person.

Be sure to mark your calendars for RWCS Foundation Day on Wednesday, July 9, 2014. A fundraising auction conducted by Houghton’s Auction Service will begin at 10 a.m. across the Hwy 63 bridge at the Bluffs Bar & Grill in Hager City. Many of the items were donated by your fellow collectors to raise funds for the museum.

Our Red Wing Pottery Museum Grand Opening Celebration begins at 5:45 p.m. on Wednesday, July 9, just before the 3rd Annual “Wine-ing for Red Wing” event. It will be held at 240 Harrison Street. Wendy Callicoat and Ann Tucker have a wonderful evening planned for all of us. The St. James Hotel will provide the hors d’oeuvres and West End Liquor will serve beer and wine. There are some surprises planned and many wonderful items to bid on in new, fun ways. Plan to attend!

Your new Red Wing Pottery Museum awaits and we know you will be delighted and amazed! Ten thousand volunteer hours and hard work has paid off. See you at Convention!



Above: It took six guys and a gal to roll this 70 gallon jug into its new home at the Red Wing Pottery Museum! RWCS members (left to right) Wayne Miller, Mark Dankers, Larry Peterson, Mike Becker, Robin Wipperling, Keith Kaiser and Ralph Ryan were happy to get this piece settled, safe and sound.



A small preview of what to expect at the new Red Wing Pottery Museum!

Two pieces that will be sold to benefit the museum during “Wine-ing for Red Wing”.

## FRIENDS OF THE RED WING POTTERY MUSEUM

### LEVELS OF GIVING

LEVELS WILL BE DETERMINED BY CUMULATIVE DONATIONS OF \$100 OR MORE PER YEAR

Potter . . . . .	\$	100-499
Collector . . . . .	\$	500-999
Partner . . . . .	\$	1000-2499
AT PATRON LEVEL AND UP, LIFETIME MEMBERSHIP OF “FRIENDS” IS ACHIEVED		
Patron . . . . .	\$	2500-4999
Benefactor . . . . .	\$	5000-9999
Potter’s Guild . . . . .	\$	10,000-24,999
Clay Giant . . . . .	\$	25,000 and up

### CORPORATE MEMBERSHIP

SPONSORS WILL BE LISTED IN PRINTED MATERIAL (RED WING SHOE, JONES FOUNDATION, ETC.)

Junior Membership (age 19 and under) . . . . \$ 10

TO QUALIFY AS A FOUNDING MEMBER, A DONATION OF \$300 OR MORE MUST BE RECEIVED BEFORE DECEMBER 31, 2014

Founding Members will be invited to the Museum to celebrate the one year anniversary of the grand opening of the new Red Wing Pottery Museum and will receive a special memento, one hour before WINE-ing for Red Wing 2015

# SOMETHING ABOUT MARY

## Red Wing's Mary Huhn

Story by RWCS Newsletter Editor Rick Natynski

Although stories of women's contributions to the Red Wing Potteries have been well-documented over the years, very little is known about the few women who were employed by Red Wing's stoneware companies, well before dinnerware became the main focus. One woman we are aware of is Mary Huhn, who worked at the Red Wing Union Stoneware Co. in her teens and early 20s.

Mary was born to immigrants Matthias (Hungary) & Josephine (Germany) Huhn in Goodhue County in August of 1910. She had two sisters – Josie, who was 2 years older, and Irma, who was 5 years younger. Matthias worked at the Trout Brook Tannery in Red Wing, which supplied leather to the Red Wing Shoe Co., among others.

When Mary was 6 years old, her mother took over management of the tannery's boarding house, which means the Huhn family started to share its home with Matthias' co-workers. In a 1979 interview, Irma said there were between five and 14 people living in the boarding house at any given time; sometimes as many 16 to 20 people were present at mealtime.

Mary's father died in 1926, which is probably when she sought employment outside the home. According to a note on the back of the photo at right, Mary was 17 years old and working at the Red Wing Union Stoneware Co. when the portrait was taken. U.S. Census records from 1930 listed Mary's occupation as "stoneware". Older sister Josie had likely married and left the home by this point, but Mary still lived in the boarding house with her mother, younger sister and 10 tannery employees.

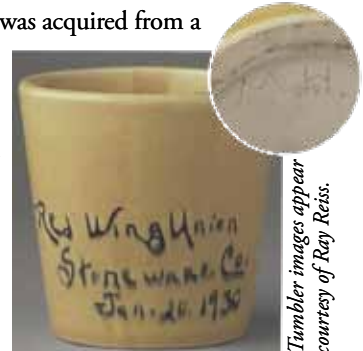
One of those lodging at the boarding house was Otto Bauman, who Mary eventually wed. The couple had a son, but Otto died in 1943 and Mary later remarried Gerald Cartwright. Remembered as a loving mother and grandmother, she passed away from cancer in Minnesota's Olmsted County in December 1977 at age 67.

Mary's exact roles and dates of employment at the Red Wing Union Stoneware Co. are unknown, but fortunately several small "Lunch Hour" pieces exist that are attributed to her, which makes it likely that she was involved in forming and glazing. The yellow tumbler at right dated 1930 is pictured on page 111 of RWCS Member Ray Reiss' *Red Wing Art Pottery* book. It contains Mary's "M.H." initials on the bottom of the piece.

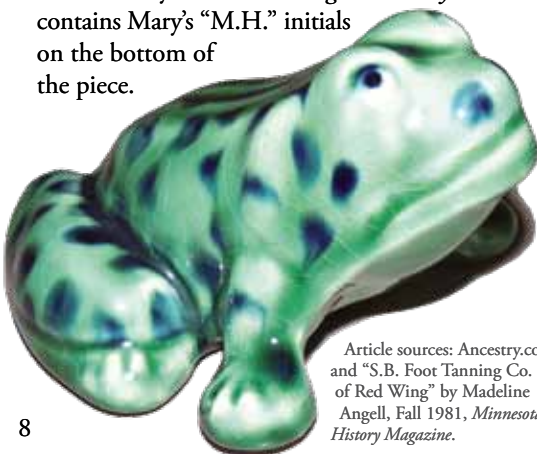


Mary Huhn circa 1927

The group of items pictured below was acquired from a Huhn relative in Red Wing by Dave Brown, father of RWCS Historian Steve Brown, in the late 1980s or early 90s. Mary's initials are inscribed on the bottom of some of these pieces, as well. Although unsigned, the impressive frog in green and blue glaze (bottom left) was acquired by a collector from a Huhn relative in Red Wing in 1996 or 1997. It's pictured on page 170 of Reiss' *Red Wing Art Pottery II* along with another frog from the same mold.



Tumbler images appear courtesy of Ray Reiss.



Article sources: Ancestry.com and "S.B. Foot Tanning Co. of Red Wing" by Madeline Angell, Fall 1981, *Minnesota History Magazine*.



*In addition to the 2 gallon target crock, two granite mugs can be seen in this old lab photo.*



*This Red Wing Stoneware Co. image was likely taken in the 1910s or 1920s.*

# COLLECTING VINTAGE PHOTOS

Story by RWCS Newsletter Editor Rick Natynski

Collecting Red Wing might not be an inexpensive hobby, but there are always ways to keep adding to your collection without breaking the bank. Whether you're new to collecting, keeping an eye on your budget, or just looking for something new to collect, collecting vintage photographs that have a piece of stoneware in them can be a fun way to complement your collection. And depending on your decorating style, they might look good on your wall, too.

On occasion you'll come across an old photo taken at the Red Wing Potteries like the image above right. Rare original prints will likely command a high price, but reprints are quite affordable and can often be found in Red Wing during Convention Week.

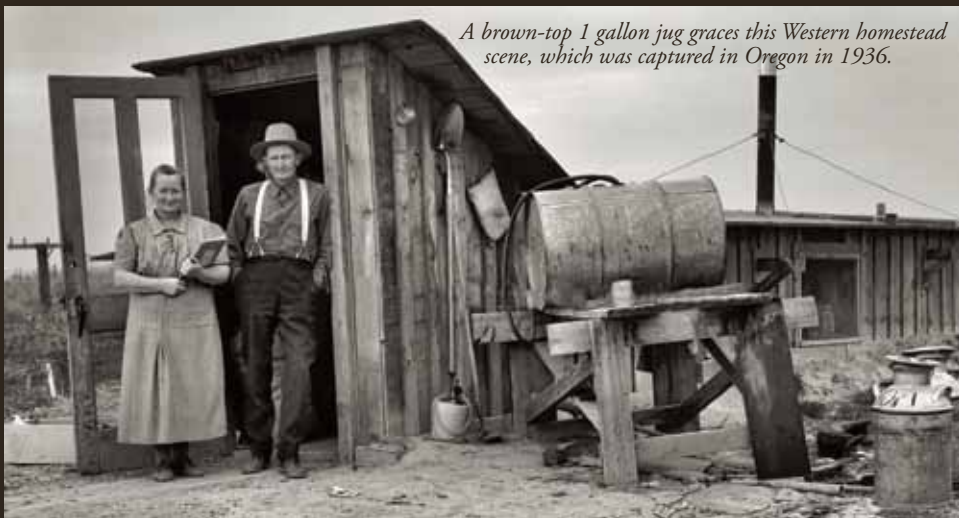
If you prefer unique, one-of-a-kind images, you might be lucky enough to come across photos that unintentionally contain a piece of stoneware. I've found some of these over the years, like the photo above of the men in the laboratory that shows a 2 gallon salt glaze target crock in the sink and the photo at right that has a 10 gallon wing crock on the sidewalk outside a home furnishing store.

Do you have a special photo similar to those shown here that you'd like to share with fellow collectors? E-mail me a scanned photo or send me a hard copy and it will be shown in a future issue when space allows. 🍷



*Written in pencil on the back of this photo is "Sept 1920", an illegible city name and "Wash" – likely the abbreviation for Washington.*

*At right: Does water or whiskey occupy the 2 gallon shoulder jug being held by Everett & Carol in this 1936 photo?*



*A brown-top 1 gallon jug graces this Western homestead scene, which was captured in Oregon in 1936.*

WWW.REDWINGCOLLECTORS.ORG

## Meetings during Convention

Chapter presidents will meet at 8 a.m. on Thursday, July 10 in the L100 room of RW High School (RWHS). Many chapters are scheduled to meet at 1 p.m. that day in the school's J200 rooms. Other chapters will meet at Crockfest in Central Park at 5 p.m. on Friday, July 11. See the RWCS website for more meeting times.

## Badger Chapter

The Badger Chapter met at the Natynski home in Pewaukee, Wis. on April 26, where the chapter's commemorative was unveiled. The chapter will meet in the RWHS cafeteria at noon on Thursday, July 10 and commemoratives will be handed out to members who missed the April meeting.

## Wisconsin Chapter

The Wisconsin Chapter will meet for its 4<sup>th</sup> Annual Convention Social at 4 p.m. on Wednesday, July 9, at The Smokin' Oak at 4243 Hwy. 61 in Red Wing. Attendees will order off the menu. Call Chris O'Sullivan at 715-392-5010 if you have any questions.

## MEMBER PASSINGS

RWCS Member **Laurie Davidson** died March 22 at age 55 in Big Lake, Minn. She is survived by a daughter, her mother RWCS Member Lauretta Jones and many friends and extended family.

**Marie Murphy**, widow of iconic Red Wing Potteries Designer Charles Murphy, died April 19 at age 102 in Clarksville, Texas. She loved to play all kinds of games, had a great sense of humor and always brought smiles to the faces of those around her. April 18, 2012 had been declared Marie Murphy Day in Clarksville, Texas by Mayor Ann Rushing. Marie joined as an active member of Jolly Gems, a women's charity organization at age 100. She was preceded in death by Charles, her husband of 65 years, and one son, Davison. She is survived by three grandchildren, one great grandchild, three nieces and nephews, eight great nieces and nephews and 15 great-great nieces and nephews.



RWCS Member **Delores "De" Callstrom** passed away May 9 at age 89 in Red Wing. Delores owned and operated Tea House Antiques for many years with her husband of 60 years, Morris, who passed away in 2002. She was very active in the community as a member of First Lutheran Church, the Goodhue

County History Center, the Woman's Study Club, the American Swedish Institute, Mothers Against Drunk Driving (MADD), Mayo Legacy, Gustavus Heritage Partners and Red Wing Area Seniors. She is survived by a daughter, two grandchildren, four great-grandchildren and many nieces, nephews and other relatives and friends.

# Red Wing Dinnerware & the Like China Line



©Copyright 2014 Terry Moe and Larry Roschen Photos courtesy of the authors and [WWW.REDWINGDINNERWARE.COM](http://WWW.REDWINGDINNERWARE.COM)

The information presented here has been gleaned from vintage Red Wing brochures, catalogs, price lists and internal documents as well as trade journals and magazines. In this discussion, a "pattern" is a dinnerware set in a particular shape with a unique handpainted design or color scheme. A "line" is a group of patterns that share the same shapes but have different handpainted designs or colors. Some of the introduction and exit dates presented have not been verified because of gaps in available documentation. When uncertain, an estimated date is provided. The end point of a pattern can be difficult to ascertain. In the 1940s and 1950s a discontinued pattern no longer appeared on price lists; in the 1960s patterns that were no longer in production remained on price lists as "limited stock" with only a few pieces listed. Here a pattern is considered to be discontinued when a full range of items was no longer available and orders were limited to remaining stock.

Each pattern has been assigned an Availability rating and a Collector Interest rating as described below. Availability represents an average for the pattern in question, however the scarcity of certain pieces within the pattern may differ. Collector Interest refers to the pattern in general, but there may be specific pieces in any pattern that are of greater interest to specialty collectors (teapots, pitchers, salt & peppers, etc). Please keep in mind these ratings are the authors' observations; your experience may vary.

### Availability

- 1 - Rare
- 2 - Very scarce
- 3 - Hard to find
- 4 - Average
- 5 - Readily available

### Collector Interest

- 1 - Highly sought, demand exceeds supply
- 2 - Primarily of interest to specialty collectors
- 3 - Above average
- 4 - Average
- 5 - Below average

## LIKE CHINA Line

"Like China" was a name coined by collectors, not Red Wing Potteries. The name, "Like China", does not appear on brochures or price lists. The shapes were similar to items in the True China line, but there were a few differences. The knob or handle on Like China covers was described in promotional literature as a "miniature pineapple". The salt & pepper shakers were shorter and wider than True China shakers. With two exceptions, the lineup of available pieces was the same for both lines. The six-piece relish tray was excluded from Like China, but a short squat water pitcher was added. Another difference was the clay used to produce the two lines. As the name implies, True China was made with china-quality clay while Like China was earthenware. No deletions or additions were made to the Like China line during the years in production.

Despite the many similarities between Like China and True China, there is no confusing one for the other because of the vast differences in the color and decorating schemes. Most True China patterns featured delicate hand-painted designs against a white background. The four Like China patterns had an intricate abstract floral design in a single color set against a colored background. The same design was used for Brocade, Blue Shadows and Damask, and colors were shared between them. Kashmir had a different, but similar design and completely different colors. The floral design appeared to have been applied using a stencil or a similar device rather than brush strokes. Red Wing Potteries continued its struggle to maintain financial viability in the face of Asian competition. The Like China line seemed to be an attempt to reduce the cost of labor and materials as compared to their previous lines.



**Damask**

**Availability: 5 Interest: 5 Years: 1964-1967**

Damask had the abstract floral design applied in a greenish-gold color on the beige fleck background. The same greenish-gold color was also found on the rims and edges of most pieces. Damask sold quite well and most pieces are fairly easy to find today, but there doesn't seem to be much of a market for this pattern.



*At left: Damask plate and covered butter. Upper right: Teapot, salt & pepper shakers, and beverage server and pitcher. Lower right: Creamer, ashtray and cup & saucer.*



**Brocade**

**Availability: 2 Interest: 5 Year: 1966**

Brocade featured the same greenish-gold design as Damask, but against a light blue background. This pattern appears on the 1966 price list but not on the 1967 list. Brocade is the most difficult of the Like China patterns to find, but like Damask, doesn't appear to hold much interest for collectors at this time.

Brocade is the most difficult of the Like China patterns to find, but like Damask, doesn't appear to hold much interest for collectors at this time. *At left: Brocade plate. Above: Teapot and pitcher. Upper right: Covered butter, creamer and covered sugar.*



**Blue Shadows**

**Availability: 4 Interest: 4**

**Years: 1966-1967**

Blue Shadows had the same light blue background as Brocade, but with the artwork applied in a darker shade of blue. Blue Shadows was introduced at the same time as Brocade and was the more successful of the two patterns. The blue-on-blue color scheme is quite attractive. *At left: Blue Shadows plate.*



*Above: Blue Shadows covered casserole and platter.*



*Four sizes of Kashmir plates.*

**Kashmir**

**Availability: 4 Interest: 3**

**Years: 1965-1967**

Kashmir differed from its sister patterns in several ways. A different abstract floral design was used for Kashmir. Unlike the other three patterns, the exterior surface of Kashmir hollowware was a solid color rather than decorated. And the colors were dark. The end result was a more formal look for Kashmir. The floral design was a deep gold color set on a dark brown background. The exterior color for hollowware was a crackled metallic brown. This glaze appears to be borrowed from an art pottery line produced during this period, while the deep gold looks to have been borrowed from the Tahitian Gold pattern. Collectors like the unusual color combination of Kashmir, thus it is more in demand than other Like China patterns.



*Above: Covered sugar, creamer, beverage server, covered butter and cup & saucer.*



*At left: Salt & pepper shakers. Above: Divided vegetable dish.*

# RICH PENN

presents

An Auction Event

## COMING THIS FALL

Featuring the collection of Mark Wilson

DES MOINES, IA OCT. 30 - NOV. 2

These and Many More!



For more information  
[WWW.RICHPENNAUCTIONS.COM](http://WWW.RICHPENNAUCTIONS.COM)

319-291-6688



# AUCTIONS

**Tuesday, July 8, 2014 – 3:00 p.m.**

**The Bluffs Bar & Grill**

(Just across the bridge from Red Wing)  
N1833 785th St., Hager City, WI

20 GAL TRANSITION CROCK, 10 GAL BIRCHLEAF CROCK, 3,4,5,6 GAL WATER COOLERS, 20 LB. WING CROCK w/COVER, 5 GAL SMALL WING CHURN, ADV. JUGS, 5 LB. HAZEL PURE FOOD CO. BAILED HANDLE JAR, ½ & 1 GAL RED WING WINES & LIQUOR JUGS, ½ GAL LADNER BROTHERS JUG, 2,3,4,5,6,10 GAL WING CROCKS, 2 GAL SALT GLAZE CROCK w/TARGET & SINGLE P, STATE FAIR MINI JUG, COWBOY

STATUE, LARGE COLLECTION OF RED WING ART WARE-VASES, PLANTERS, JARDINIERES, BOWLS, CANDLE HOLDERS, ASH-TRAYS, COMMEMORATIVES, PLUS MUCH MORE THAN LISTED. CATALOGS \$5.



PLUS MUCH MORE THAN LISTED. CATALOGS \$5.

**Wednesday, July 9, 2014 – 10:00 a.m.**

**The Bluffs Bar & Grill**

N1833 785th St., Hager City, WI

3,4,5,6,8,10 GAL HAND TURNED WATER COOLERS, 8 & 15 GAL SALT GLAZE COBALT BUTTERFLY CROCKS, (2) 3 GAL TARGET SALT GLAZE LAZY 8 JUGS w/TURKEY DROPPINGS, 15 GAL COBALT BUTTERFLY SALT GLAZE FRONT STAMPED CROCK, 25 GAL WING CROCK, CHURNS, CHICKEN WATERERS, WESTERN & EASTERN POTTERY, MINI JUGS, LARGE CHERRY BAND PITCHER, WESTERN STONWARE 3# REFRIGERATOR JAR /NO LID, NESTED SET OF 3 ORANGE BAUER BOWLS, NESTED SET OF 5 MULTI-COLORED BAUER BOWLS, BIRCHWOOD CANOES-SMALL, MEDIUM, LARGE, BIRCHWOOD LOG PLANTER, BIRCHWOOD 8" VASE, COWBOY AND COWGIRL FIGURINES, 8" GREEN LAMP BASE, ASSORTMENT OF ART WARE VASES, COMMEMORATIVES, ASSORTMENT OF DINNERWARE INCLUDING SEVERAL PIECES OF LUTE SONG, RANDOM HARVEST, CRAZY RHYTHM, GYPSY TRAIL, BROCADE, BRITTANY, MORNING GLORY, PEPE, LOTUS, POMPEII, LEXINGTON ROSE, VILLAGE GREEN, TAMPICO, PLUS MUCH MORE THAN LISTED. SEE WEBSITE FOR PICTURES. CATALOGS \$5.



**HOUGHTON'S AUCTION SERVICE • 1967 LAUNA AVE. RED WING, MN 55066**

**651-388-5870 • WWW.HOUGHTONAUCTIONS.COM**



GAIL PECK'S

## STONEWARE SALE

Consisting of Red Wing, Blue/White and miscellaneous stoneware in addition to Red Wing memorabilia

SUPER 8 MOTEL - RED WING, MN  
CONFERENCE ROOM, POOL ENTRANCE

Wednesday, July 9, 8 a.m. to 3 p.m.

Thursday, July 10, 8 a.m. to noon

## CONVENTION WEEK EVENTS IN RED WING

July 10-12 – "Cinderella" at Sheldon Theatre

July 11-13 – Treasure Island Pow Wow Dancers, drummers, crafts, jewelry and traditional Native American food. Admission is free and open to all ages.

July 11-13 – Live Music at Jimmy's Pub (8-10:30 p.m. at the St. James Hotel)

July 11-13 – Queen of the Mississippi steamboat docked in Red Wing

July 12 – Farmers' Market 8 a.m. to 2 p.m. at Red Wing Depot on Levee St.

July 12 – Celebration of the Arts 11 a.m. to 5 p.m. at Anderson Center

July 12 – Lord Pelon Concert 7 p.m. at the Goodhue County History Center

July 13 – Sea Wing Disaster Anniversary Cruise 9 a.m. & 1 p.m. Tickets \$15 per person. Contact the Goodhue County History Center for more information.

July 13 – Garden Tour featuring beautiful gardens of Red Wing area.

Visit [WWW.REDWING.ORG](http://WWW.REDWING.ORG) to learn more about these events.

*Continued from page 5*

**RWCS Website:** Visit the Convention page to get the current schedule, Show & Sale floor plan, education information, Crock Hunt form, etc.

**Volunteers:** Don't forget to bring your pin and your rocker for updating. Interested in volunteering? Please contact Stacy at the business office. No amount of your time will be turned away.

**Badge Holders/Lanyards:** Don't forget to bring your red badge holder or lanyard to Convention. A limited amount will be available.

**Membership Brochures/Newsletters:** Since you'll be in town, this is a great time to replenish your recruiting supplies. Contact Stacy before Convention Week and she'll have a packet ready for you to pick up.

Classified ads are 20¢ per word for members and 30¢ per word for non-members; \$4 minimum charge and are accepted on a first-come, first-served basis. In addition to appearing in the newsletter, classifieds and display ads are posted on the RWCS website.

### DISPLAY ADS

Display Ad Size	1x	6x
Full page	\$425	385
1/2 page ( <i>horizontal or vertical</i> )	225	205
1/4 page	125	115
1/8 page	85	70

Display ads purchased by non-members cost an additional 15%.

### Display Ad Dimensions

Full Page	7 1/2 x 10
1/2 page ( <i>horizontal or vertical</i> )	7 1/2 x 4 1/2
1/4 page	3 5/8 x 4 7/8
1/8 page	3 5/8 x 2 1/4

Ads must be supplied electronically as an EPS or PDF file for PC. There is an additional 10 percent fee for design and makeup if needed (\$10 minimum).

### DEADLINES

Issue	Ads	Editorial	Mail Date
February	Jan. 10	Jan. 1	Feb. 15
April	March 10	March 1	April 15
June	May 10	May 1	June 15
August	July 25	July 15	Aug. 31
October	Sept. 10	Sept. 1	Oct. 15
December	Nov. 10	Nov. 1	Dec. 15

Make checks payable to RWCS and mail with ads:

Rick Natynski, PO Box 198  
Pewaukee, WI 53072

Ads can also be submitted by e-mail: send to [NEWSLETTER@REDWINGCOLLECTORS.ORG](mailto:NEWSLETTER@REDWINGCOLLECTORS.ORG) and send checks separately. Or, call Rick at 414-416-WING (9464).

### RED WING FOR SALE

Small cherryband pitcher, \$75; 3 gal water cooler lid, \$295; Quart Mason jar, black mark, \$200. Call Orville at 509-751-0948.

5 gal Elephant Ear beehive jug, Union oval, bold black print, \$3,250; Complete set of 7 paneled spongeware bowls, sizes 5-11, \$1,400; 5 gal. hand-turned water cooler, 4" wing, RWUSC oval, spigot, and original button lid that has been repaired, \$750; Blue banded bailed butter tubs with lids, 3#, \$250, 5#, \$275. Mason jars, black print, "short quart", \$175, 1/2 gal, \$200. Will deliver to Convention. Phone 515-225-3024 or e-mail [CLREEDINWDM@MCHSI.COM](mailto:CLREEDINWDM@MCHSI.COM).

Selling many years of Red Wing stoneware collection, including: crocks, jugs, canning jars, refrigerator jars, pitchers, spatterware bowls, etc. All are in mint or near-mint condition. All reasonable price offers will be accepted. Would prefer to sell groups of items or entire collection to one buyer. This is an excellent opportunity for collectors or dealers. Would arrange for viewing at your convenience, whenever possible. Contact Tom Witasek, [TDBWIT@ATT.NET](mailto:TDBWIT@ATT.NET) or 920-312-3544 for list and possible phone pictures.

Commemoratives: two 1996, two 1999, one 2001, one 2002, three 2003, two 2004, one 2007, one 2008, two 2009, three 2010, three 2011, one 2012. Twenty two pieces all like brand new and most are in the original boxes with the cards. Will sell all of them in a group for \$880 OBO. 847-668-1099.

Commemoratives: 1986-2013. Please make offers. Can see viewed in Beloit, Wis. Also have duplicates from several years. Call 608-921-1834.

50 gallon Red Wing birchleaf crock in excellent condition. Contact Richard at 608-617-7424 or [RNATYNSKI@FRONTIER.COM](mailto:RNATYNSKI@FRONTIER.COM).

### RED WING WANTED

Wanted: "Early" Normandy, the first version of the Normandy pattern, with maroon and blue bands at the outer edge of the plates. Will buy or trade. Any condition considered. Also wanted: Ivanhoe pieces. Contact John at [SECRETARY@REDWINGCOLLECTORS.ORG](mailto:SECRETARY@REDWINGCOLLECTORS.ORG) or 612-861-0066. 6/14

Wanted: These Xmas advertising bean pots: Koehnkes - Clear Lake, SD; C & W Shafer - Branch, WI; Gjermundson Bros Hdwe - Wittenberg, WI; Virnig & Gross - Chokia, MN. Any condition considered. Also looking for 9-inch blue and white panel bowl. Will consider any condition. Call 414-731-0218 or e-mail [REDWINGR@GMAIL.COM](mailto:REDWINGR@GMAIL.COM).

Wanted: "Schwingle & Co., Muscoda", or "E.J. Schwingle & Co., Muscoda Wisconsin" advertising stoneware. Please contact Becca at [HOFFER5@HOTMAIL.COM](mailto:HOFFER5@HOTMAIL.COM) or 507-272-1107.

Wanted: Mini and salesman sample flower pots. Contact [COBE142@COX.NET](mailto:COBE142@COX.NET) or 402-331-4749.

Wanted: NORTH DAKOTA! Looking for jugs, crocks, butter crocks and churns with advertising. Will pay top dollar for the right pieces. Contact [BEHIVE@POLARCOMM.COM](mailto:BEHIVE@POLARCOMM.COM) or 701-270-0242.

Wanted: Red Wing #687 & M3006 vases especially in blue/green Chromoline. Contact Rick at [NEWSLETTER@REDWINGCOLLECTORS.ORG](mailto:NEWSLETTER@REDWINGCOLLECTORS.ORG) or 414-416-9464. Also seeking mint #675 blue/green Chromoline bowl. Will also buy damaged Chromoline in other shapes.

### EVENTS

Elkhorn Flea Market, Walworth County Fairgrounds in Elkhorn, WI. Sundays: June 29, Aug. 10, Sept. 28. More than 500 quality dealers! Visit [www.nlpromotionsllc.com](http://www.nlpromotionsllc.com) for information.

19th Annual Wisconsin Pottery Association Show & Sale - 9 a.m. to 4 p.m., August 23, Alliant Energy Center, Madison, WI. See [www.wisconsinpottery.org](http://www.wisconsinpottery.org) for information and coupon for free parking.

Walnut Antique Fall Festival - Walnut, Ia. Sept. 13-14, 2014. Primitives, stoneware, advertising, toys, furniture, art pottery, etc. Dealer space available. Contact Tim Lockard at 641-862-3239.

ANTIQUES & COLLECTABLES  
100+ RED WING CROCKS  
**AUCTION AUCTION AUCTION**  
SATURDAY AUGUST  
**16TH 2014 10am**  
LOCATED AT:  
**JOHN & NANCY ROBERTS**  
#4271 ROBERTS ROAD BLACK RIVER FALLS WI 54615  
RED WING BEADER & CANNING JARS, WATER COOLERS, BUTTER CHURNS,  
BUTTER CROCKS, COVER WEIGHTS & A LARGE VARIETY OF CROCKS.  
80+ HILL & ROSEVILLE POTTERY. MANY RED WING HOOD PIECES,  
MISC FURNITURE AND  
2006 HONDA GOLDWING CL1800 WITH ALUMA TRAILER.  
REGISTERED WISCONSIN AUCTIONEER  
**TIM BARNUM #1284**  
TEL 715-284-7633 [WWW.TIMBARNUMAUCTIONS.COM](http://WWW.TIMBARNUMAUCTIONS.COM)

# Larry's Jugs

## ANTIQUES

**BUY • SELL • TRADE**  
I'll buy one piece, or the  
whole collection.  
Also taking consignment.

1811 Old West Main Street • Red Wing, MN 55066  
651-388-3331 (shop) • 612-719-6113 (cell)



**REGULAR HOURS:**  
June thru August: Tuesday thru Sunday, 10 a.m. to 5 p.m.  
Sept. thru December: Thursday thru Sunday, 10 a.m. to 5 p.m.

**2014 Convention Hours:**  
Saturday, July 5 thru Friday, July 11  
8 a.m. to 6 p.m.

Visit Larry's Annex next door, where Larry and additional dealers will be set up during Convention Week!

*If you've been waiting for the right year to come to the RWCS Convention, this is it!  
Come see the incredible, newly expanded Red Wing Pottery Museum!  
Grand Opening Celebration: 6 p.m. Wednesday, July 9 at the Pottery Place Annex.*



Also visit my booth at Countryside Antique Mall: 31752 65th Ave. Cannon Falls, MN 507-263-0352  
Mark your calendars! We'll be at the Stoneware & Antique Sale in downtown Walnut, IA on Sept. 13-14.


WWW.REDWINGCOLLECTORS.ORG

~~Current License & to set, email, & get Copyright Red Wing Collectors Society~~

# CONVENTION AUCTION PREVIEW

From salt glaze to Nokomis, Brushed Ware to advertising, a large offering of dinnerware and a 4 gallon wing beehive threshing jug (pictured below), collectors of a wide variety of Red Wing's wares will find something of interest at the RWCS Convention Auction this year.

The photos shown here represent a small percentage of the many fine items that have been submitted. Remember, every piece in this auction has been submitted by a member or a chapter, so by bidding on these items, you are directly showing your support for your fellow RWCS members and the Society as a whole.

The Auction Check-in is from noon to 3 p.m. on Wednesday, July 9 in the Red Wing High School Gymnasium and 8 to 11 a.m. on Thursday, July 10. The earlier you can be there to submit your piece, the better. Auction viewing will run from 12:15 to 4:15 p.m. Thursday and the event will start at 4:30 p.m. We hope to see you there!  -Bruce Selfridge, RWCS Auction Manager



## COMING IN THE AUGUST ISSUE...

THE NEW  
RED WING  
POTTERY  
MUSEUM'S  
GRAND  
OPENING



[WWW.REDWINGCOLLECTORS.ORG](http://WWW.REDWINGCOLLECTORS.ORG)

~~Current License & to set, email, & grant Copyright Red Wing Collectors Society~~