

**Members Only  
Auction**

4:30 p.m.  
Thursday, July 11  
River Bluff School  
Gymnasium

Auction highlights pictured  
below & continued inside!



**Pottery & Antique  
Show & Sale**

Saturday, July 13  
Free to the public  
(10:30 am to 1:30 pm)  
River Bluff School  
Gymnasium

# 2019 CONVENTION

JULY 11-13, 2019 • RIVER BLUFF EDUCATION CENTER  
395 GUERNSEY LANE, RED WING, MN



SPONSORED BY



**larry's jugs  
ANTIQUES**



## Greetings from the PRESIDENT

Welcome to the 43rd Convention of the Red Wing Collectors Society!

The 43rd RWCS Convention finds us in a new home at the River Bluff Education Center which shares a parking lot with Red Wing High School. This facility is fully air conditioned, including the gym, so all activities will be back under one roof with plenty of parking. Please check out this program or download our app to preview the dates/times of all activities. I want to thank the convention committee for making the trip to Red Wing at their own expense and their diligence in finding us a new home.

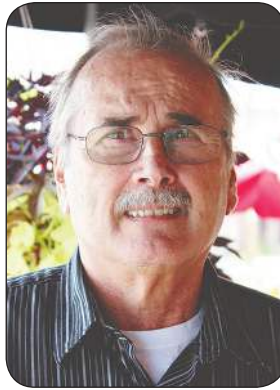
'Wine-ing for Red Wing' – the premier fund-raising event for your Pottery Museum of Red Wing – will once again be held on Wednesday evening. Effective this year, you could purchase your Wine-ing tickets along with your RWCS registration. Tickets are still available in the Museum gift shop for early purchase or can be purchased during the event.

At the Thursday morning Welcome session, Larry Birks's presentation is Auction Grading-Identifying Stoneware Damage, Restoration and Fakes. The RWCS Commemorative will be unveiled on Thursday at 8am. Bob has done an outstanding job. Our auction, managed by Houghton's auction service, is Thursday afternoon in the air-conditioned gym. Special thanks to Dick Houghton for touring the facility and Dave Kuffel for laying out the auction template. I also want to thank the Goodhue County History Center and Red Wing Art Reach for supporting Kids View again this year.

On Friday, 'Yoshi' has lined up an exceptional array of education seminars that also includes guided tours at our pottery museum. Be sure to visit the display area and vote for the displays of your choice. The RWCS Business Meeting is at 3:15pm and is immediately followed by our Friday social til 6:30pm.

Saturday morning the "Show & Sale" welcomes members at 9 a.m. and free public admission begins at 10:30. Our Convention culminates Saturday evening with a wonderful banquet at the Mt. Frontenac Golf Club.

Whether you come to Convention to hunt for that special piece, renew friendships, or just enjoy the beautiful City of Red Wing, we hope that this Convention is everything you hoped for! Safe travels home!



Paul Wichert  
President

Paul Wichert  
President, Red Wing Collectors Society

## Welcome from the EXECUTIVE DIRECTOR

Greetings Red Wing Collectors!  
The Convention is here! It's Convention #14 for me, how about you?

Hopefully receiving the Convention Program in advance of the Convention has helped you plan your visit to Red Wing again this year. Also, don't forget you can have the convention info right on your handheld device via "In Any Event" in your device app store.

Inside this issue, there are several important items for members to review prior to the Convention: the Scavenger Hunt, the 2019 Hall of Fame Inductees, and Convention Auction preview! All this and much more is available to you right at your fingertips to help you get ready for the Convention. Whether you use this printed program, the website, or the app, we hope you will have fun at all the events and activities as you arrive in Red Wing while adding to your collection.

Your convention is made possible by hundreds of volunteers and their countless hours of time and effort. When you have a moment, please take time to thank the volunteers. Extra special thanks to the Facility Committee for their efforts to select River Bluff School. Also, to Bruce Selfridge who has stepped in to manage the Auction. If you would like to volunteer, stop at the registration desk at the convention.

As always plenty of additional program copies will be available onsite at the Convention and a PDF on the RWCS Website. If you have not registered yet, onsite registration opens Thursday, July 11, at River Bluff Education Center.

Finally, I would like to thank the generous support of so many businesses and organizations in Red Wing. Without the annual local support and welcoming message each year, the convention would not be the membership experience of the year.

Thank you to every member for taking part in the many convention events and activities. I look forward to seeing everyone.

Have a great Convention!

Stacy L. Wegner  
Executive Director, Red Wing Collectors Society



Stacy Wegner  
Executive Director

## Welcome from the HISTORY CENTER

The Goodhue County History Center is located at 1166 Oak St., Red Wing.



➔ CELEBRATING 150 YEARS ➔  
GOODHUE COUNTY HISTORICAL SOCIETY  
Minn.

Goodhue County Historical Society welcomes RWCS members to beautiful Red Wing, MN.

We hope your visit here is enjoyable and memorable.

During your stay, we invite you to visit the Goodhue County Historical Society. The society is celebrating 150 years. The "Old Settlers Association" was founded back in 1869 – the first county historical society in Minnesota.

Our new exhibit is "Celebrating the Society: 150 Years at GCHS". Through 150 objects and images the exhibit will explore the stories of several people, places and events represented in GCHS's collection.

Everyone is invited to a Birthday Party Sunday, July 7, 12pm -3pm, to celebrate the Goodhue County Historical Society's 150th year. There will be cake, ice cream, entertainment by Balloon Artist Dave Olson, tours of the museum and much more.

What better way to celebrate GCHS's 150 years than with a toast? To celebrate this special year, Goodhue County Historical Society will be selling limited edition growlers. The growlers will feature both the oldest known county beer label (courtesy of Red Wing Brewery) and the Sesquicentennial logo. Red Wing Brewery



is also in the process of creating a unique brew for the growlers. (see article page 19)

Growler pre-sale forms will be available at the museum and at the GCHS table at Show-Sale.

Hope to see you during convention.

Robin Wipperling  
Executive Director, Goodhue County Historical Society

Welcome to **RED WING!**

**W**elcome to the Red Wing Collectors Society Convention – and welcome to Red Wing!

We are glad you are here and hope you have a great experience.

*Because in Red Wing we offer you:*

- Engaging retail districts and a beautiful, historic downtown with picturesque buildings offering exciting stores with everything you need and want and restaurants with great food for all tastes;

- A vigorous arts and culture community, broad and ever-changing, consisting of Red Wing Arts (a gallery, an arts festival, and a free outdoor concert series), The Anderson Center at Tower View (home for visiting artists and performances); The Sheldon Theatre (featuring performances of local, regional, national and international artists); The Goodhue County History Center (with generations of local history), and the Prairie Island Indian Community and the Treasure Island Resort & Casino with its world class entertainment choices.

*We present you rugged natural beauty:*

- The Mississippi River provides an exceptional gateway to boating, fishing, and eagle watching.

- Our bluffs let you take memorable hikes on the sacred He Mni Caŋ [Heh-Meh-NEE-Cha] - Barn Bluff or drive to the summit of Memorial Bluff to enjoy the view of the Hiawatha Valley.

- Two uniquely picturesque golf courses await to entertain you.
- Miles of bike trails, including the nationally recognized Cannon Valley Trail, provide hours of sightseeing through nature's beauty;
- Numerous parks offer an abundance of mountain biking trails, playgrounds, and quiet contemplative spots to picnic and enjoy the river.

This all adds up to a city that creates unforgettable experiences for you. Making it all possible are our people ~ welcoming and friendly to all.

So have a fantastic convention and a wonderful time in Red Wing!

Sean Dowse  
Mayor, City of Red Wing



Sean Dowse  
Red Wing Mayor

*Greetings from the*  
**RWCS FOUNDATION**

**O**n behalf of the RWCS Foundation Board of Directors, welcome to Red Wing! You are all invited to visit the free Pottery Museum of Red Wing.

This year's display is a 1919 Red Wing Saloon. In six months, the Saloon will close, due to Prohibition. See and hear how Prohibition affected the pottery business, while enjoying the sight of over one hundred advertising jugs and liquor bottles.

The Museum provides a timeline of incredible artifacts of stoneware, art pottery, and dinnerware along with various Red Wing memorabilia.

On the evening of Wednesday, July 10, the RWCS Foundation Board of Directors sponsors our annual fundraiser, "Wine-ing for Red Wing," from 6:00 to 9:00. Advance tickets of \$25.00 may be purchased at the Pottery Museum Gift Store. Included in the price is a commemorative wine or beer glass, beverage, food, and a fundraising auction. Always a highly successful part of Convention, you won't want to miss this.

In June and July, Pottery Museum hours are Monday through Saturday, 9:00 to 5:00, and Sunday 11:00 to 4:00. Beginning August 1, regular hours will resume (closed on Monday).

Follow us on Facebook and enjoy your time in Red Wing and especially the Pottery Museum of Red Wing.

Sincerely,  
Larry Peterson  
President, RWCS Foundation



Larry Peterson  
President  
RWCS Foundation

**TABLE OF CONTENTS**

Birks addresses auction grading, fakes .....	4
2019 RWCS Hall of Fame Inductees .....	5
Convention Week Events in Red Wing .....	6
2019 Convention Schedule .....	7
Thank You Volunteers .....	8
RWCS Convention Auction Preview .....	9
Education .....	10-13
Commemorative Information .....	14
Pottery Museum .....	14
Show and Sale .....	15
Chapter & Organization Information .....	16
Thank You Sponsors .....	17
River Bluff Education Center .....	17
Scavenger Hunt .....	18
GCHS Sesquicentennial .....	19
Convention Meetup .....	20
2019 Convention Button .....	20

**BECOME A MEMBER OF THE RWCS**

**New Members welcome to join during Convention.  
Come to River Bluff Thursday-Saturday.**

**Join Today To Get  
2019 Commemorative**

A Primary \$35 annual membership is afforded all the rights and privileges of the organization. An Associate \$15 annual membership is afforded all the rights and privileges of the organization except for the receipt of the newsletter. There **must be at least one Primary membership per household address** in order to have other members at that address having Associate member status. Each membership is afforded the right to purchase one Convention commemorative.

Call 651-388-4004 | Online: [www.ERWSC.org](http://www.ERWSC.org) | E-mail: [director@redwingcollectors.org](mailto:director@redwingcollectors.org)

# Birks addresses auction grading, fakes

By Ruth Nerhaugen  
Contributor

**N**obody likes being cheated. If Larry Birks has his way, it won't happen to his fellow Red Wing collectors. He's on a mission to teach collectors enough so they will not be fooled into buying fake or damaged stoneware pieces.

Birks will share his knowledge on identifying valuable stoneware on opening day of the 43rd annual Red Wing Collectors Society Convention.

He will present the keynote address during the welcome session at 10:30 a.m. Thursday, July 11, in the River Bluff Education Center cafeteria.

Birk has acquired valued expertise in the identification of fake, restored and damaged stoneware. That ability is an asset as he takes charge of "grading" items that will be sold at the annual members auction on Thursday of convention week.

The knowledge he applies to grading auction submissions was acquired over many years as a collector.

Birks, who lives in Harrisonville, Mo., lived a pretty normal life until one day about 50 years ago when his mother – a habitual garage saler and antiquer he fondly describes as "a picker" – called him over to her place to see a 2-gallon winged Red Wing crock she had picked somewhere in Missouri.

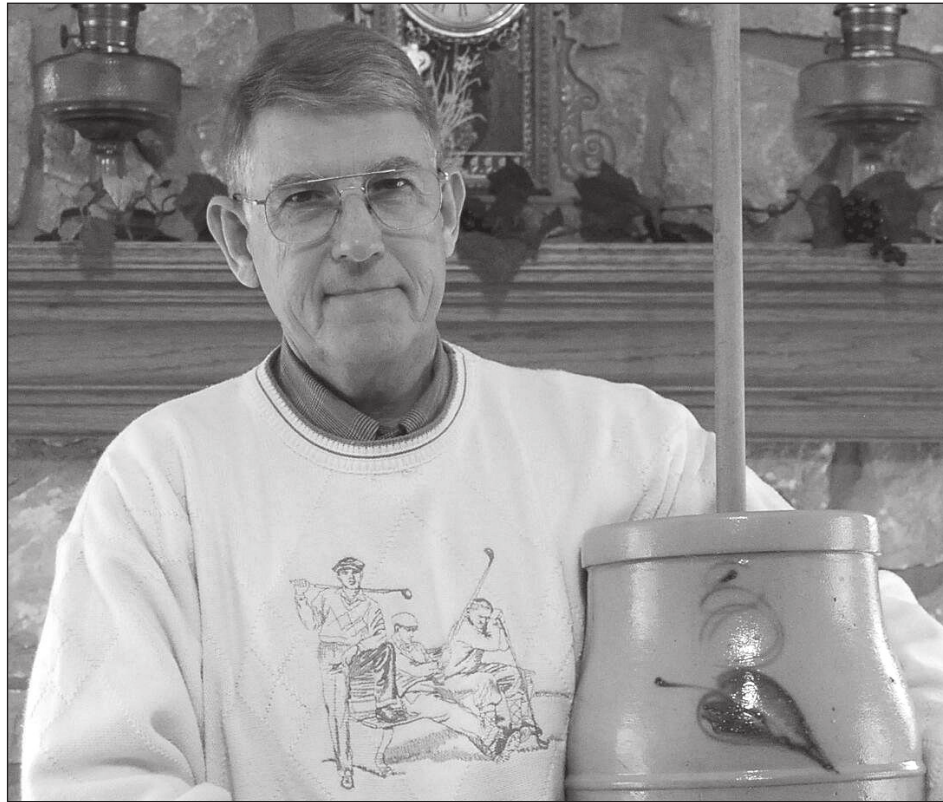
"You should collect this," she said.

Soon he was looking for winged crocks, jugs and churns. But there was a problem, Birks said. "They were really hard to find" in that part of the country.

When he stumbled across a beater jar with advertising, he decided to expand into that area, along with the occasional butter crock advertising piece.

"Red Wing took over my life," Birks admitted. He was in his late 20s or early 30s when he realized what was happening.

Soon he had a nice collection of Red Wing, but because the pieces were hard to



Larry Birks started collecting winged pieces, expanded to advertising crocks then discovered a passion for salt glaze. Also an expert on identifying fakes, he will give the keynote address Thursday morning of convention week.

find, it included chipped and cracked items that fit his other criteria.

Birks heard about the Red Wing Collectors Society in the 1980s; he and his wife, Linda, attended their first convention late that decade.

"She was very supportive – she still is," he said. But when it reached the point that there were no empty corners, no more places to stack stoneware in their home, she would say "What are you going to get rid of?" when he brought in a new piece.

"Once I started going to the Red Wing convention," Birks said, "I realized I had a passion for salt-glazed stoneware."

They kept their beater jars but sold about 95 percent of their winged and advertising

appearance of the original.

Those items often end up in pieces in gardens, Birks said. Restored, they could once again look like they did when they were first produced. They could be passed on to children and grandchildren.

His restoration work made him a good candidate to grade submissions to the RWCS auction, a job he's been doing for several years.

"I knew what to look for," he pointed out. He could tell if someone had repaired a crack, hairline or crow'sfoot. And he could identify fakes.

The most common fakes are advertising pieces, Birks said. Typically they are authentic old pieces to which someone has attached fake advertising labels. "A \$50 crock with a fake label is \$200-\$250," he said.

He has shared his knowledge about fakes at the RWCS Mid-Winter convention as well as July convention workshops in Red Wing. Birk's expertise includes Western Stoneware and pieces made in Macomb, Ill., as well as Red Wing.

"We saw a major decrease in fakes after we started letting people know fakes were out there," Birks said. He also provided tips on identifying fake labels, which can be scraped without damaging the piece.

For a while, traffic in fakes slowed down. "In the last year," however, "they started turning up again." It could be the same person making them, he speculated – possibly making on last effort to get rid of all his fakes.

"Probably a dozen have shown up this year at remote auctions and small farm auctions," Birks said. Usually they are consigned to someone else's auction.

At the same time, he said, fakers are becoming increasingly sophisticated. "About three years ago a potter discovered a way to re-fire a piece of stoneware and get the label under the glaze," Birks explained.

With that process, scratching or peeling fake labels no longer worked as an identification method.

"Fortunately only a few pieces have turned up," he added, plus there was a lawsuit filed by a buyer who wanted his money back.

"The problem is ... that to do this process, they lose a lot. If there is any air in the old clay, it will blow up when re-fired," he said.

People who attend the keynote will learn what he goes through to grade a piece that has been submitted to the auction, and what to look for when they are considering buying an expensive piece.

## KEYNOTE DETAILS

**Who:** Larry Birks

**When:** 10 a.m. July 11

**Where:** Cafetorium, River Bluff Education Center

The RWCS plans to record the session and have it available online later this year.

pieces and started buying similar pieces finished in the earlier salt glaze.

"Along the way, I decided I needed to learn to restore stoneware, the old stuff," he said. He would find semi-rare pieces with cracks or chips and restore them to the



Birks draws on his knowledge of restoration techniques when he identifies and grades items submitted to the annual member auction.



Fake advertising crocks are created by applying new labels to old stoneware pieces.

CONTINUED ON PAGE 5

# 2019 RWCS Hall of Fame Inductees

The Red Wing Collectors Society Hall of Fame was established in 1991 to recognize individuals who have made a major positive impact in the collection, preservation, and/or education about Red Wing stoneware, pottery, and dinnerware. There have been only 27 recipients previously inducted into the RWCS Hall of Fame.

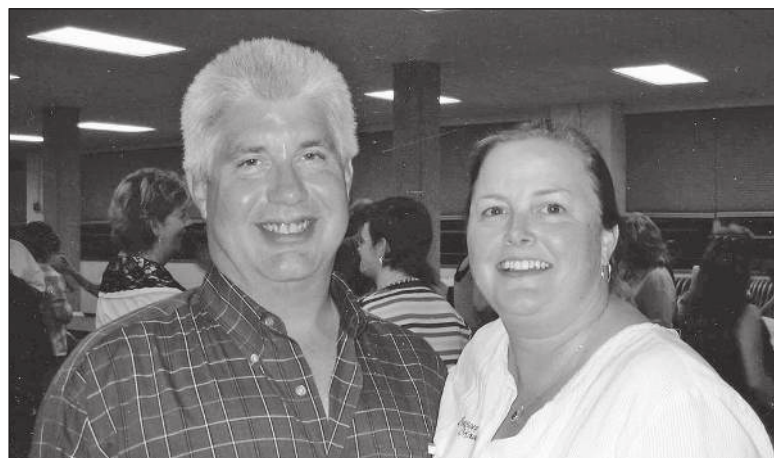
Four new recipients of this prestigious award will be recognized during this year's Convention at the annual meeting of the Collectors Society on Friday, July 12. They are Steven and Barbara Brown and David (posthumously) and Bonnie Hutchson.

Steve and Barb Brown, Red Wing, Minnesota, have generously shared information about the pottery manufacturing companies of Red Wing and organized projects and displays to preserve that information. They have also shared information about their particular passion for Red Wing Oddities, lunch hour pieces and rare examples of pottery made in Red Wing. They both served on the Pottery Museum Foundation Board of Directors a combined 22 years

and Steve was historian of the RWCS for 16 years, among many other volunteer positions they have both held.

David and Bonnie Hutchson, Lake City, Minnesota, made a significant contribution to the preservation of historical information when they rescued, preserved and then donated an irreplaceable archive of historical catalogs, documents, molds, and rare pottery pieces to the Pottery Museum of Red Wing. Dave and Bonnie were mold makers alongside Dave's father, Teddy, who was the last employee at Red Wing Potteries in 1967 when it closed. Without these artifacts and their first hand knowledge, valuable information would have been lost. Dave spent many days volunteering at the Pottery Museum as a tour guide and shared detailed information to visitors about the mold making process and manufacturing of pottery wares.

The Red Wing Collectors Society is delighted to welcome Steve and Barb Brown and Dave and Bonnie Hutchson into the RWCS Hall of Fame.



Steve  
and Barb  
Brown,  
Red Wing,  
MN



Bonnie  
and Dave  
Hutchson,  
Lake City,  
MN

## KEYNOTE - CONTINUED FROM PAGE 4

"That's the reason for the keynote," Birks said - "to help people know the pieces in the auction are well looked over, and what they can look for themselves."

A few fakes have turned up at the Red Wing auction over the years, he said. "Some of the pieces are so good they can convince a lot of people" that they are genuine.

He's never bought a fake himself, Birks said, except for one piece he purchased knowing it was fake.

Birks, who led the Trails West Chapter for several years and chaired the RWCS from 2014-16, and his wife look forward to

seeing all the other collectors at convention.

"We expect a number of new people this year," he said. "There are a lot of new collectors out there" who can broaden their base of knowledge by participating in educational activities at the annual gathering.

His own future as a collector may have a new look. "We are downsizing," Birks said. Some pieces have been sold but, he admitted, "I still have more stoneware than any person should have."

"I've got a little bit of clay underneath my fingernails."



**Pottery Place Antiques & 3rd Floor Antiques**  
651-388-7765      651-388-3087

**3 Floors of shopping!**  
Historic Pottery Place Mall  
2000 Old West Main St  
Red Wing, MN



**OPEN 7 days a week!**  
Mon.- Sat. 10 am - 6pm  
Sun. 11pm - 5pm

Find Us on Facebook 

**RWCS Member Owned Shops!**



## GREAT CHICKEN

- BURGERS & FRIES
- SANDWICHES
- WRAPS
- SALAD BAR
- FISH TACOS
- CONES
- SHAKES • MALTS

## BREAKFAST SPECIAL

2 eggs, 2 bacon strips  
and 2 pancakes

**Breakfast Burritos**  
Omelets  
French Toast  
Biscuits and Gravy  
Pancakes  
Much more!



**A Proud Sponsor of the Potter's Convention**

# Randy's

**Hwy. 61, Downtown Red Wing • 7AM-9PM Mon.-Sun.**  
See full menu online at [randysinredwing.com](http://randysinredwing.com)

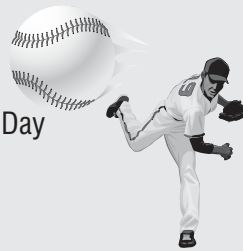
# Convention Week Events in Red Wing

## July 7 Sunday

**8am - Noon** Annual First Lutheran Waffle Breakfast, All You Can Eat!

**Noon - 3:00 pm** Goodhue County Historical Society Birthday Party "Celebrating the Society: 150 years at GCHS". There will be cake, ice cream and entertainment by Balloon Artist Dave Olson, tours of the museum and much more.

**2:00 pm** Red Wing Aces baseball vs. St. Paul Mudhens. It's Share-A-Coke Day at the Red Wing Athletic Field.



## July 10 Wednesday

**6:00 pm - 9:00 pm** Wine-ing for Red Wing at the Pottery Museum of Red Wing.

**7:00 pm** Concert in the Park in Central Park presented by Red Wing Arts, special performance by Miss Myra & The Moonshiners.

## July 12 Friday

**5:30 pm - 6:30 pm** Member Meet Up at the Convention, sponsored by Stockholm Pie's Pie Plate Cafe & Red Wing General Store.

**7:30 pm** Red Wing Aces vs. Randolph Railcats. It's Musty-Barnhart Agency Night at the Red Wing Athletic Field. The Prairie Island Indian Community Pow Wow 2019 begins and runs through July 14.

## July 13 Saturday

**5:30 pm** Convention Banquet at Mount Frontenac Golf Course.

**5:00 pm - 11:00 pm** Rolling River Music Festival in the Central Park Bandshell.

## July 14 Sunday

American Queen Riverboat in port at Levee Park. Due to the unpredictable river and weather conditions, there are fluctuations in schedules, and dates and times are subject to change. Check the Visitors Bureau for the most up to date information.

# HILL STREET ANTIQUES

Red Wing Pottery

Blacksmith Tools

Primitives

Anvils & Cone Anvils



212 Hill Street  
Red Wing, MN

651-388-0736

651-246-2272

RED WING STONEWARE, DINNERWARE & ART WARE

# AUCTION

**3 p.m. Tuesday, July 9, 2019**

The Bluffs Bar & Grill

N1833 785<sup>th</sup> St., Hager City, WI 54014

ZINC CROCKS-2,3,5,6,8,10, WATER COOLERS 3 & 5 GAL, 6 GAL SALT GLAZE CHURN, SHOULDER JUGS, PRESERVE JARS, ALBANY SLIP JARS, GREEK KEY & SPONGEWARE ADVERTISING BOWLS, SHOULDER BOWLS, ADVERTISING BEAN POTS, BEATER JARS, MASON FRUIT JARS, LIDS, KATRINA, CHEF PIERRE & FRIAR TUCK COOKIE JARS, BRUSHWARE VASES, PLUS OTHER ARTWARE VASES, ASSORTMENT OF DINNERWARE (CHECK WEB SITE FOR PATTERNS) PLUS MUCH MORE.

See website for more listings. Catalogs available for \$5 each – send payment to address below.

RED WING STONEWARE, POTTERY & ART WARE

# AUCTION

**10 a.m. Wednesday, July 10, 2019**

The Bluffs Bar & Grill

N1833 785<sup>th</sup> St., Hager City, WI 54014

WING CROCKS-20,10,3,2 GAL, 15 GAL BIRCHLEAF CROCK, SCHLOSSER BROS ADV JUG, PANTRY JARS, ADV BEAN POTS, GRAYLINE, SPONGEBAND, LIDS, ASSORTMENT OF VASES, DINNERWARE, BIRCH BARK CANOES, MCDONALD'S CROCKS, RWCS AND RW CHAPTER COMMEMORATIVES, PRETTY RW, EISENHOWER, 1965 MINNESOTA ALL STAR HOME PLATE & MINNESOTA TWINS ASHTRAYS, ASSORTMENT OF TRIVETS, PLUS MUCH MORE.

See website for more listings. Catalogs available for \$5 each – send payment to address below.

HOUGHTON'S AUCTION SERVICE • 1831 BOHMBACH DR RED WING, MN 55066

651-388-5870 • WWW.HOUGHTONAUCTIONS.COM

# 2019 CONVENTION SCHEDULE • River Bluff Education Center, 395 Guernsey Lane, Red Wing, MN

TIME	ACTIVITY	LOCATION
Monday, July 8 @ 8:00 am	Foundation Board Meeting	Pottery Museum of Red Wing Potters Hall
Tuesday, July 9 @ 5:00 pm	RWCS Board of Directors Meeting	Pottery Museum of Red Wing Potters Hall
<b>Wednesday, July 10</b>		
11:00 - 3:00	<b>Pre-registered attendees badge pick up Auction Catalog For Sale</b>	Pottery Museum of Red Wing 240 Harrison St
12:00 - 3:00	RWCS Auction Check-In, Catalogs for Sale	River Bluff Education Center Zumbro River Pod (G 100)
12:00 - 3:00	Display: set up by appointment at River Bluff Education Center	<b>Pottery Museum of Red Wing</b>
6:00pm - 9:00pm	<b>RWCS Foundation "WINE-ing for Red Wing"</b>	<b>LOCATION</b>
<b>Thursday, July 11 River Bluff Education Center</b>		
8:00 - 5:30	<b>Convention Registration Auction Catalogs For Sale &amp; Bid Card Distribution</b>	<b>Entrance Door 8</b>
8:00 - 2:00	<b>RWCS Apparel Sales Education Tables</b>	<b>Cafetorium</b>
8:00 - 1:00	<b>Concessions Open</b> Breakfast, Lunch, Beverages and Snack Red Wing High School Volleyball Team	Cafetorium
8:00 - 10:00	Chapter Presidents Meeting	A 115
8:00 - 10:00	<b>Commemorative Distribution &amp; Silent Auctions Open</b> (silent auctions close 10:30 am Saturday)	<b>Cannon River Pod (D 100)</b>
8:00 - 11:00	Set up the Display and Rare Items	<b>Zumbro River Pod (G 100)</b>
8:00 - 2:00	<b>Chapter Challenge Pieces (bidding closes at 1:30 pm Friday)</b>	<b>Cafetorium</b>
9:00 - 9:50	<b>Orientation for Convention First Timers</b>	<b>C 100</b>
9:30 - 12:30	<b>Young Collector - Participants must check in at the Museum. No shuttle services offered.</b> (pg 12)	<b>Goodhue County Historical Society</b> 1166 Oak St
<b>NOON - 4:30</b>	<b>Displays open for viewing, voting closes at 3pm Friday</b>	<b>Zumbro River Pod (G 100)</b>
10:30 - 12:00	<b>Welcome Session &amp; Keynote Larry Birks - Auction Grading-Identifying Stoneware Damage, Restoration and Fakes</b>	Cafetorium
11:00 - 1:00	<b>Lunch Open</b> provided by Red Wing High School Volleyball Team or school	Cafetorium
1:00 - 2:00	<b>Chapter Meetings</b> Gopher Chapter C 100, Iowa Chapter C 101, Lewis & Clark Chapter C 102, Siouxland Chapter C 104, Southwest Chapter C 105, Trails West Chapter A 115, Wisconsin Chapter F 103	Assigned
1:00 - 2:00	<b>Commemorative Distribution</b> (silent auctions close 10:30 am Saturday)	<b>Cannon River Pod (D 100)</b>
8:00 - 11:00	<b>AUCTION</b> (preview pg 9)	<b>Gym</b>
2:00 - 4:15	<b>Auction Check-In Auction Preview</b>	Gym
4:00 - 7:00 pm	<b>Concessions Open</b> Food, Beverages and Snacks Red Wing High School Volleyball Team	Gym
4:30 - ????	<b>Official RWCS Auction Special Commemorative Drawing!</b>	Cafetorium
<b>Friday, July 12</b>		
8:00 - 2:00	<b>Convention Registration</b>	<b>Entrance Door 8</b>
8:00 - 2:00	<b>RWCS Apparel Sales</b>	<b>Cafetorium</b>
8:00 - 1:00	<b>Concessions Open</b> Breakfast, Lunch, Beverages & Snacks Red Wing High School Volleyball Team	Cafetorium
8:00 - 3:00	<b>Displays Open, Voting Closes at 3:00 pm Today</b>	<b>Zumbro River Pod (G 100)</b>
8:00 - 1:00	Education Tables	Cafetorium
8:00 - 1:30	<b>Chapter Challenge Pieces (bidding closes at 1:30 pm Friday)</b>	<b>Cafetorium</b>
8:00 - 10:50	<b>Commemorative Distribution &amp; Silent Auction</b> (silent auctions close 10:30 am Saturday)	<b>Cannon River Pod (D 100)</b>

TIME	ACTIVITY	LOCATION
9:00 - 9:50	<b>Orientation for Convention First Timers</b>	<b>C 100</b>
9:00 - 9:50	<b>Shared Interest Groupsm</b> (pg 10)	C 101, 102, 104
9:30	<b>Kids View Bus Transportation</b> Parent/guardian and participants meet near registration to get on bus transportation to event locations. Bus Departs at 9:45 am (pg 12)	Registration
10:00 - 11:50	<b>OFF-SITE TOUR ONE</b> (pg 13)	<b>Oakwood Cemetery</b> Located at the end of East Ave.
10:00 - 10:50	<b>Clayworks Tour Through Oakwood Cemetery</b>	<b>C 100, 101, 102, 104, A 115</b>
10:00 - 3:00	<b>Adult Educational Seminars (pgs 10-13)</b>	<b>GC Historical Society</b>
10:00 - 3:00	<b>Kids View Seminars (Lunch will be provided)</b> (pg 12)	and <b>Red Wing Art Reach</b>
11:00 - 11:50	Participants will be divided into two assigned group.	C 100, 101, 102, 104, A 115
11:00 - 1:00	<b>Adult Educational Seminars (pgs 10-13)</b>	Cafetorium
1:30	<b>Lunch Open</b> Red Wing High School Volleyball Team	Cafetorium
1:00 - 1:50	<b>Chapter Challenge Silent Auction Closes</b>	<b>Pottery Museum of Red Wing</b>
1:00 - 1:50	<b>OFF-SITE TOUR TWO</b> (pg 13)	240 Harrison St
2:00	<b>Pottery Museum of Red Wing</b>	<b>C 100, 101, 102, 104, A 115</b>
2:00 - 2:50	<b>Adult Educational Seminars</b>	Registration
2:00 - 2:50	Scavenger Hunt form turn in deadline. Winners announced at Member Meet up. Must be present to win.	<b>Pottery Museum of Red Wing</b>
2:00 - 2:50	<b>OFF-SITE TOUR THREE</b> (pg 13)	240 Harrison St
1:30 - 2:30	<b>Pottery Museum of Red Wing</b>	<b>C 100, 101, 102, 104, A 115</b>
12:30 - 2:30	<b>Adult Educational Seminars</b>	<b>Cannon River Pod (D 100)</b>
3:00	<b>Commemorative Distribution and Silent Auctions</b> (silent auctions close 10:30 am Saturday at Show & Sale)	
3:15 - 5:15	HAUL IN Show & Sale Items	Gym
5:30 pm - 6:30	<b>Member Meet Up @ Convention!!!!</b> (pg 20)	Entrance at Door 11 & 12 for sellers only!
7:00 pm - 9:00 pm	<b>Scavenger Hunt winner announced</b>	Registration
7:00 pm - 9:00 pm	<b>RWCS Facebook Chapter Social</b>	<b>Cafetorium</b>
<b>Saturday, July 13</b>	<b>SHOW &amp; SALE</b> (pg 15)	<b>Cafetorium</b>
8:00 - 9:00	HAUL IN Show and Sale Sellers enter only at Door 11 & 12	<b>Pottery Museum of Red Wing</b>
9:00 - 10:30	<b>Registration Opens</b>	Gym
9:00 - 1:00	<b>Displays Open to the Public</b>	<b>Entrance Door 8</b>
9:00 - 1:00	Concessions Food, Beverages and Snacks Red Wing High School Volleyball Team	<b>Zumbro River Pod (G 100)</b>
9:00 - 10:30	Commemorative Distribution - Silent Auction Close at 10:30	Cafetorium
9:00 - 10:30	<b>Show &amp; Sale Open to Registered Members ONLY</b>	<b>Cannon River Pod (D 100)</b>
10:30 - 1:30	<b>Show &amp; Sale Open to the Public</b>	<b>Gym</b>
1:00 - 2:00	Commemorative Lottery (while supplies last)	<b>Gym</b>
1:30 - 3:00	Display Removal	Gym
6:00 p.m. Social	Show and Sale Removal	Zumbro River (G 100)
6:30 pm Dinner	<b>Banquet Celebration*</b>	Gym
		<b>Mount Frontenac Golf Course</b>
		32420 Ski Rd, Frontenac, MN

\*Tickets still available

All Convention Event Times Are Subject to Change  
See onsite signage for the final schedule

## RWCS CONVENTION APP!

Visit Google Play or the Apple Store to download "In Any Event" to have the RWCS Convention information on your handheld device. From the schedule to hot links to all the event information, it's a great resource at your fingertips.

Special thanks to RWCS member Craig Orcutt for creating the app.

Members who downloaded the app at MidWinter will receive an automatic update.



**In Any Event... (Unreleased)**  
Orcadia Labs, LLC  
E Everyone

## Red Wing Collectors Society GEAR STORE!! Convention 2019



EMBROIDERED CAPS, HOODIES, PULLOVERS

PENS • INSULATED CUPS

DIGGIN' SHIRTS

AND NEW PRODUCTS!!

INCLUDING THE 2019 SPECIALLY DESIGNED COLLECTOR SHIRT!!

GET YOUR GEAR WHILE SUPPLIES LAST!!

**Registration Area - Thursday and Friday 8-2**

ALL PROFIT GOES TO SUPPORT RWCS



*Thank You  
so much!*

The RWCS Board of Directors, Convention Chairs, and I wish to thank all the members that volunteer for the RWCS year-round, both at MidWinter and Convention. The time commitment of hundreds of members before, during, and after RWCS events makes these membership events possible.

Each year more than 200 members take time out of their schedule at MidWinter and the Convention. In addition, many members volunteer time in the office throughout the year.

Stacy Wegner

*Thank You* to all the members who help out areas including:

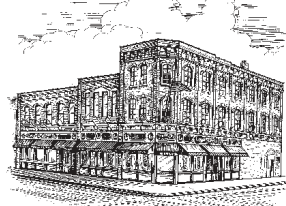
- Registration Onsite
- Pre- Registration Pickup
- Data Entry
- Apparel Sales
- Commemorative
  - Distribution
  - Silent auctions
  - Sales
- Auction
  - Set up/tear down
  - Grading
  - Check-in
  - Clerking
- Show & Sale
  - Set up/Clean up
  - Door Security
- Fundraising silent auctions
- Speakers
- Shared Interest group leaders
- Social events
- Display
  - Set up/ tear down
  - Putting on a display
- Kids View
- Young Collectors
- Newsletter Articles
- Social Media
- Website management
- Ask the Expert questions
- Members promotion
- Convention preparations
- Convention Button
- Chapter Officers
- Managers
- Convention Chairs
- RWCS brochure committee
- Technology Support
- RWCS Apparel Design
- RWCS Office Mailings
- Distributing Event Posters in Local Community
- Transporting RWCS Supplies to events
- Hanging Convention and MidWinter signage
- RWCS Officer Election
- Bylaw Committees
- Membership Committee
- Facebook Admins
- Hosting Socials
- Distribution of handouts

*Volunteering is a great way to meet new members, make new friendships, and have fun! Consider volunteering today. Contact the office 651-388-4004 director@redwingcollector.org.*

## LIBERTY'S

RESTAURANT & LOUNGE

Proud  
Supporter  
of the  
Red Wing  
Collectors  
Society.



Decor of Red Wing Yesteryear

**Welcome Collectors!**

Open Daily 8 a.m.

**Serving Breakfast,  
Lunch & Dinner**

**Since 1975**

Featuring Sandwiches, Pizza,  
Steaks, Seafood, Mexican,  
Italian and American Cuisine.

Online Menu  
libertysrestaurant.com

**Full Menu Delivery**

**651-388-8877**

303 W. Third Street  
Downtown Red Wing

## HATS OFF TO HISTORY

CELEBRATING 150 YEARS  
GOODHUE COUNTY HISTORICAL SOCIETY

Minn.



*Minnesota's First  
County Historical Society*

1166 Oak Street | Red Wing, MN  
www.GoodhueCountyHistory.org  
(651) 388-6024



### 2018 RWCS Convention Attendance By State:

MN ..... 446	NE ..... 17	TX ..... 5	NY ..... 2
WI ..... 182	KS ..... 17	IN ..... 4	TN ..... 2
IA ..... 58	AZ ..... 11	AK ..... 4	KY ..... 2
IL ..... 32	UT ..... 8	OH ..... 4	MA ..... 1
SD ..... 30	CO ..... 7	MI ..... 4	PA ..... 1
MO ..... 22	FL ..... 7	WA ..... 4	
CA ..... 20	AL ..... 6	SC ..... 3	
ND ..... 19	OK ..... 5	AR ..... 3	<b>TOTAL: 926</b>

**10% OFF**



**240 Harrison St, Red Wing**  
Hours: Mon-Thu 11am-10pm  
Fri-Sat 11am-11pm  
Sun 11am-10pm

Not valid with any other offer or Happy Hours.





## RWCS Convention Auction Preview

From stoneware to dinnerware to art pottery, we have several exceptional pieces up for sale at this year's RWCS Convention Auction! Catalogs are for sale for \$5 at the Pottery Museum of Red Wing and Larry's Jugs.

I would like to thank everyone who submitted pieces to this year's auction. The pieces pictured on the cover and those pictured here will be up for grabs. So many photos were sent in that there was no way we could fit them all, so visit the members-only section of the RWCS website to see more. Remember, every piece in this auction has been submitted by either a member, a Chapter, or the museum, so by bidding on these items, you are directly showing your support for your fellow collectors and the RWCS as a whole!

Remember, the Convention Auction will be held in the **gymnasium at River Bluff Education Center at 395 Guernsey Lane in Red Wing, which is next door to Red Wing High School. Consignors can check-in their pieces from noon to 3 p.m. on Wednesday, July 10, or 8 to 11 a.m. on Thursday, July 11.** The earlier you can be there to submit your pieces, the better. You need to be registered for Convention to drop off your items, so you'll need to pick up your Convention badge before you do this.

### Badge pick up times:

- Noon to 3 p.m. on Wednesday, July 10, at the Pottery Museum of Red Wing
- 8 a.m. to 2 p.m. on Thursday, July 11, at the River Bluff Education Center

**Auction viewing will run from 2 to 4:15 p.m. on Thursday, July 11, and the event itself will begin at 4:30 p.m.** As always, members must be registered for Convention in order to attend and bid. A concession stand will be open at the auction from 4 to 7 p.m. Members attending the auction are entered in a drawing for the 2019 Special Commemorative. You must be present at the end of the auction to win!

Finally, on behalf of the RWCS, I want to recognize Scott Hardman, who recently resigned from his position as RWCS Auction Manager due to health reasons. Scott, thanks for all your time and commitment to the RWCS. We wish you the best with your health and look forward to seeing you at a future RWCS event! As past RWCS Auction Manager, Bruce Selfridge agreed to fill in for this summer's auction. But the club is still looking for someone to serve in 2020 though – the final year of the position's term until the next election takes place. Please contact RWCS President Paul Wichert or the RWCS office if you're interested!

I'm excited to see you all in Red Wing. Don't forget your wallet!

– Stacy Wegner, RWCS Executive Director



**GAIL PECK'S STONWARE SALE**  
**CONVENTION WEEK IN RED WING**  
 RED WING SUPER 8 MOTEL  
 CONFERENCE ROOM (POOL ENTRANCE)  
**WEDNESDAY, JULY 10 & THURSDAY, JULY 11**  
 8 a.m. - 3 p.m. & 8 a.m. - 2 p.m.

1161 4th St S  
 Cannon Falls, MN  
 507-263-0352

**COUNTRY SIDE Antique Mall**

Open Daily  
 Mon-Sat 9:30-5:30  
 Sun. 11-5:30

**Extended hours are 9am-7pm for the Pottery Convention Thurs - Fri - Sat**

Large selection of Red Wing Pottery  
 12,000 sq ft of shopping for all budgets.

Located between the Twin Cities and Rochester off Hwy 52 on the southeast end of Cannon Falls. Next to John Deere.

Like us on Facebook

# EDUCATION - Thursday & Friday, July 11 & 12

## Keynote

**Title:** Auction Grading-Identifying Stoneware Damage, Restoration and Fakes

**Presenter:** Larry Birks

**Thursday: July 11 • 10:30 a.m.**

### Keynote:

Larry Birks will present on the need for auction grading, and the definitions of the various damage the graders look for that cause the description to vary from what is shown on the auction sheet. The seminar also explains repairs, restorations, and fakes that find their way across the grading table. (see article pg 4)

### Speaker Biography:

Larry Birks has been collecting stoneware for over 40 years. Started attending the RWCS Convention in 1988. He is a Charter Member of Trails West Chapter of RWCS. Served as President of RWCS for two years. Previously presented a seminar on Stoneware Fakes. Served on the RWCS Auction grading committee for the last 5 years.

## Educational Seminars Friday, July 12, 2019

### Patents and Stoneware

Speaker: Marv Juel

Session 1: 10:00 a.m. to 10:50 a.m.

Session 2: 11:00 a.m. to 11:50 a.m.

**Session Description:** Early stoneware patents and their effect on Red Wing.

**Speaker Biography:** Marv is a famous stoneware fruit jar authority, former mathematics teacher, and stoneware collector, from Plainfield Illinois. He will soon be opening a museum in his hometown of Nashua, Iowa

### The Journey of Collecting Red Wing

Speakers: Larry Peterson, Gary Tyc

Session 1: 10:00 a.m. to 10:50 a.m.

Session 2: 11:00 a.m. to 11:50 a.m.

**Session Description:** Larry Peterson has identified over ten stages of collecting Red Wing. He, along with Gary Tyc, will help to identify where you are right now and give you ideas for how to move purposefully forward. They will share many new ways to enhance your collecting experience and how to have

more fun in your Red Wing adventure. Class participation will be encouraged.

**Speaker Biography:** Larry Peterson, RWCS Charter Member, and Hall of Fame member, has been collecting Red Wing since 1970. Larry was asked to display some of his favorite pieces at the first convention. He has participated in every convention since. He has served as Education Chairperson and President of the Cannon Valley Chapter. He has coauthored three books on Red Wing stoneware. Larry has always dreamed of creating a pottery museum. With Dave and Diane Hallstrom he started the Pottery Museum 20 years ago at Red Wing which became the new museum. He was project manager, overseeing the designing, coordinating the transfer to the current site, and moving the Schleich Museum to the city of Red Wing. He works hard every year with other volunteers to have a new display and many new items for you to enjoy. He is the owner of Larry's Jugs Antiques. His passion is to promote history, collecting, and investing in Red Wing stoneware and pottery by sharing, teaching, and having fun.

Gary Tyc has been collecting Red Wing stoneware and other antiques for over 30 years. He has served and is currently serving as an RWCS Foundation Board member. He is a past president of the RWCS Rocky Mountain (Colorado) chapter from 1994 through 1997. His primary collecting interests are salt glaze water coolers, beehive jugs, crocks, and certain merchant advertising pieces. Professionally he is the CFO of a mutual fund company with headquarters in New York City and Tucson, AZ. He has lived in Tucson, AZ, for the past 17 years.

### Collecting on a Budget

Speaker: Todd Avery

Session 1: 10:00 a.m. to 10:50 a.m.

Session 2: 11:00 a.m. to 11:50 a.m.

**Session Description:** This seminar is aimed at the novice collector who would like some ideas about how to collect Red Wing on a fixed or limited budget. Todd will focus on how, when, and where to search. He will offer ideas that have worked for him in the past. He will explore the concept of building a collection as opposed to just buying one. Class participation will be a big part of this seminar.

**Speaker Biography:** Todd Avery. Born in 1961 in Red Wing, MN. Raised and educated in Red Wing through 12th grade. Earned a bachelor's degree from Augsburg University in 1999. Married to Nora Avery and lives just outside Red Wing. Currently employed as a Paraprofessional with the Goodhue County Education District, working with young adults with disabilities. Favorite students are those on the autism spectrum. Todd has collected pottery most of his life and has broken his share as a child. He enjoys collecting Red Wing produced clay almost by default, having grown up around

it. He claims his collection is modest but has grown to include treasured pieces. Most conventions you will find Nora and Todd in the parking lot with friends, with the occasional piece that fits into their collection.

### 50 Years of Pottery Dump Passion

Speakers: Steve & Phyllis Showers

Session 1: 10:00 a.m. to 10:50 a.m.

Session 2: 11:00 a.m. to 11:50 a.m.

**Session Description:** This session will feature a photo collection of the 50 years of digging in the dump. During the seminar, there will also be a display of the results of a recent team dump dig with several long-time collectors. If you have a shard or need a shard come to this seminar.

**Speaker Biography:** "Red Wing Archeologist" Steve Showers has been a Red Wing pottery dump digger for over 50 years and is an RWCS Hall of Fame Member. He has been a speaker at every Convention since he joined the RWCS. Steve and his wife, Phyllis, are active members of the Gopher Chapter and Iowa Chapter. They are avid gardeners, using their Red Wing sewer pipe as planters, and shards as ground cover. They live in Welch, Minnesota.

### Anniversary Line Dinnerware

Speakers: Larry Roschen & Terry Moe

Session 1: 10:00 a.m. to 10:50 a.m.

Session 2: 11:00 a.m. to 11:50 a.m.

**Session Description:** Terry Moe and Larry Roschen will discuss the patterns and unique shapes of the Anniversary dinnerware line. This line was introduced in 1953 and was named to honor the 75th anniversary of the Red Wing Pottery industry. Photos and information about these patterns will be shared via slides along with their usual chatter.

**Speaker Biography:** Terry Moe and his wife Marilyn have been collecting Red Wing pottery since they inherited a partial set of Gypsy Trail Plain and Reed in 1975 from Terry's Grandmother. They primarily collect dinnerware. Gypsy Trail, Wreath, Ivanhoe, Nassau, Ardennes, Hotel or Restaurant, and Normandy along with Merrileaf have been their main focus. Primary source materials allowing them to document dinnerware have become a major interest.

Larry Roschen and his wife Kathy have collected all forms of Red Wing pottery since 1980. Red Wing pitchers, teapots, salt & pepper shakers are primary collecting interests along with building complete sets of several dinnerware patterns. Larry's interests eventually turned from growing the collection to learning more about the Red

## Orientation for First Timers

**Session Title:** Orientation for First Timers

**Speaker:** Catherine Beall

**Thursday: July 11, 9:00 a.m. to 10:00 a.m.**

**Friday: July 12, 9:00 a.m. to 10:00 a.m.**

C100

### Session Description:

Start your first Convention experience out right by attending an Orientation Seminar led by long-time RWCS member Catherine Beall. Catherine will discuss all of the activities that are lined up and offer tips on making the most of your Convention experience.

### Speaker Biography:

Hello all, my name is Catherine Beall. I have been involved in the Red Wing Convention for over ten years now. I have been speaking at the Convention for eight years now. My interest in Red Wing is the history and preservation of that history. The Charles E. Murphy prints are my area of interest. Hope to see you all there.

## Shared Interest Groups

**Friday, July 12 • 9:00 am – 10:00 am**

**C101, 102, 104**

### Description:

Come to the school early to meet up with other RWCS members that share your specific Red Wing collecting passion for Dinnerware, Stoneware, or Art Pottery. This is your time to network with other collectors and swap stories, ask questions and get connected with other RWCS members with your area of interest.

See schedule for assigned rooms.

**EDUCATION DAY continued from page 10**

Wing dinnerware lines through research of vintage documents. Larry currently serves as the dinnerware advisor for the "Ask the Experts" section of the RWCS website.

Larry and Terry have conducted numerous dinnerware seminars for RWCS Midwinter and Summer Conventions.

**Early Red Wing Clay Industries and Marketing – from Salt and Albany to the Dawn of Zinc**

Speaker: Dr. Danae R. Quirk Dorr  
 Session 3: 1:00 p.m. to 1:50 p.m.  
 Session 4: 2:00 p.m. to 2:50 p.m.

**Session Description:** This seminar will include the history of stoneware production in Red Wing and also cover various products produced, attributed to, and sold by Red Wing Stoneware Co., Minnesota Stoneware Co., North Star Stoneware Co., and Union Stoneware Co. through the late 1800s.

**Speaker Biography:** Intrigued and fascinated by the science and history of the Red Wing Potteries, Dr. Danae R. Quirk Dorr has been enthusiastic about collecting North Star Stoneware products for many years. When she's not reading about stoneware or searching for a hard-to-find piece, Danae works as a chemistry professor and author.

Danae is currently serving as Vice President of the RWCS Facebook Chapter. She is also a Board Member of the RWCS Foundation and enjoys volunteering at the Pottery Museum of Red Wing.

**"Hats Off To History" 150 years of Goodhue County History**

Speaker: Robin Wipperling, Executive Director  
 Session 3: 1:00 p.m. to 1:50 p.m.  
 Session 4: 2:00 p.m. to 2:50 p.m.

**Session Description:** Goodhue County Historical Society is celebrating 150 years.

The "Old Settlers Association" was founded back in 1869-the first county historical society in Minnesota. Learn how the Goodhue County Historical Society has grown over the past 150 years.

**Speaker Biography:** Robin Wipperling, Executive Director of Goodhue County Historical Society. She serves on the Red Wing Heritage Presentation Commission, and is a member of the Minnesota Alliance of Local History Museums. She enjoys sharing the rich history of Goodhue County. Robin has volunteered over the past 4 years.

**The Potter, the Myth and the Reality**

Speaker: Richard Spiller  
 Session 3: 1:00 p.m. to 1:50 p.m.  
 Session 4: 2:00 p.m. to 2:50 p.m.

**Session Description:** Richard is going to share his lifelong love of pottery. He will share a brief history of American pottery, his personal work, and his outreach in the

world. Come hear his story and learn from a lifelong creative potter, instructor, and world traveler.

**Speaker Biography:** Richard Spiller has 50 years as a potter, sculptor, ceramic artist, and professor, having taught university, exhibited, participated in symposiums, and built kilns. He is well traveled with focus on northern Europe especially being in the company of dear friends and colleagues in Finland, Estonia, Latvia, Lithuania, Russia, and "Darling Iceland" recently and frequently. Richard lives in a home and studio, centrally located in downtown Urne, Wisconsin.

**Digging up the Past**

Speakers: Paul Boudin, Connie Mathison  
 Session 3: 1:00 p.m. to 1:50 p.m.  
 Session 4: 2:00 p.m. to 2:50 p.m.

**Session Description:** Come and join Connie and Paul for fun and informational discussions on some of their best and newest finds. They have added some awesome pieces

**CONTINUED ON PAGE 13**

**Keynote & Educational Seminars July 11-12, 2019  
 River Bluff Education Center**

	C100	C101	C102	C104	A115	Off Site Location 1	Off Site Location 2
9:00 to 10:50	Thursday & Friday Orientation for First Timers Catherine Beall	Shared Interest FRIDAY Stoneware	Shared Interest FRIDAY Art Pottery	Shared Interest FRIDAY Dinnerware			
<b>EDUCATIONAL SEMINARS BELOW ON FRIDAY ONLY</b>							
Session I 10:00 to 10:50	Patents and Stoneware Marv Juel	The Journey of Collecting Larry Peterson Gary Tyc	Collecting on a Budget Todd Avery	Anniversary Line Dinnerware Larry Roschen Terry Moe	50 Years of Pottery Dump Passion Steve & Phyllis Showers		Clayworks – A Tour Through Oakwood Cemetery  Located at the end of East Ave.  Dustin Heckman
Session II 11:00 to 11:50	Patents and Stoneware Marv Juel	The Journey of Collecting Larry Peterson Gary Tyc	Collecting on a Budget Todd Avery	Anniversary Line Dinnerware Larry Roschen Terry Moe	50 Years of Pottery Dump Passion Steve & Phyllis Showers		
Session III 1:00 to 1:50	Early Red Wing Clay Industries and Marketing Danae Quirk Dorr	"Hats Off to History" 150 years of Goodhue County History Robin Wipperling	The Potter, the Myth and the Reality Richard Spiller	Red Wing Bowls Brent Mischke	Digging up the Past Paul Boudin	Pottery Museum Tour 240 Harrison St.  Docents	
Session IV 2:00 to 2:50	Early Red Wing Clay Industries and Marketing Danae Quirk Dorr	"Hats Off to History" 150 years of Goodhue County History Robin Wipperling	The Potter, the Myth and the Reality Richard Spiller	Red Wing Bowls Brent Mischke	Digging up the Past Paul Boudin	Pottery Museum Tour 240 Harrison St.  Docents	

**KEYNOTE Thursday, July 11 10:30 am Auction Grading-Identifying Stoneware Damage, Restoration and Fakes Cafetorium Larry Birks**

## Young Collectors

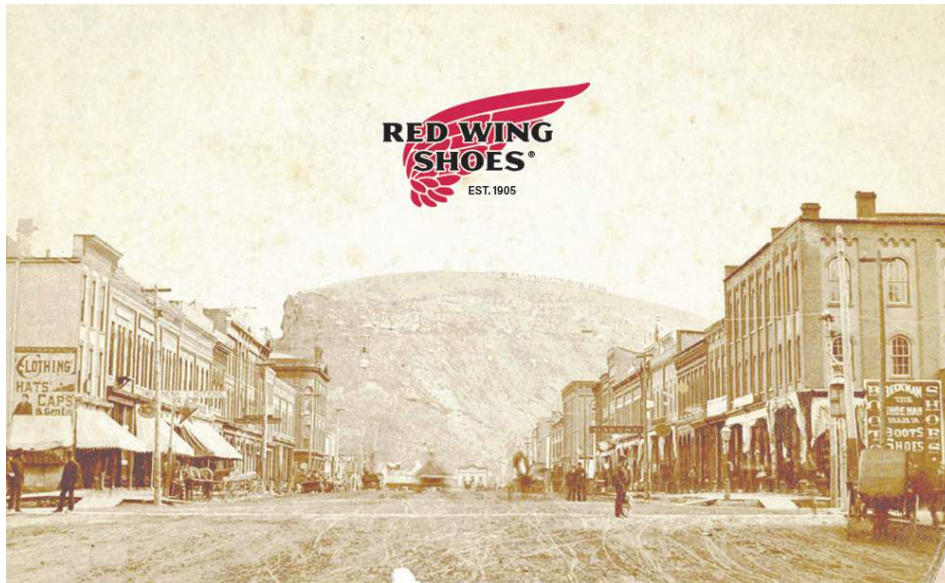
**Thursday, July 11 - 9:30 a.m. to 12:30 p.m.**  
**Goodhue County: More than Clay**

The Red Wing Collectors Society (RWCS) will partner once again with the Goodhue County Historical Society (GCHS) to offer wonderful educational opportunities to our younger members at Convention.

The Goodhue County Historical Society is celebrating its 150th Anniversary in 2019. Since the RWCS has been a part of that history for more than 40 years, we're holding all Young Collectors activities at GCHS located at 1166 Oak Street.

**Participants ages 13 and up will meet at the History Center** to have a private tour of the museum's 150th Anniversary exhibit and a behind-the-scenes look at the museum itself. Following the tour, participants will assist with set up for KidsView activities.

**Parents/guardians, please drop off and pick up your child at the GCHS, which is located at 1166 Oak Street, 651-388-6024.**



**PROUD TO CALL  
RED WING OUR HOME**

REDWINGSHOES.COM

## Kids View

**Friday, July 12 - 10 a.m. to 3 p.m. (Lunch included)**  
**Goodhue County: More than Clay**

**UPDATE: The RWCS will provide round trip bus transportation to and from River Bluff and between locations for all Kids View participants. Parent/Guardian will need to be at River Bluff at both the departure and arrival times.**

**9:30am Meet at River Bluff School for bus transportation**

**9:45am Bus departs for Red Wing ArtReach and Goodhue County Historical Society**

**3:00pm Bus returns to River Bluff from both event sites**

The Red Wing Collectors Society (RWCS) will partner once again with Red Wing ArtReach and the Goodhue County Historical Society (GCHS) to offer wonderful educational opportunities to our younger members at Convention.

The Goodhue County Historical Society (GCHS) is celebrating its 150th Anniversary in 2019. Since the RWCS has been a part of that history for more than 40 years, we're holding half of the KidsView activities there. Here's a look at our schedule:

Open to all children attending Convention ages 3 to 13 and limited to 35 participants, KidsView activities will be held at GCHS and Red Wing ArtReach. Registered KidsView attendees will be divided into two groups.

**Your child's group assignment will come in your Convention registration packet. All Kids View participants will be placed in their Groups at River Bluff Education Center and transported to their group's respective site via bus. All participants will return to River Bluff School at 3:00pm.**

Group A will start the day at GCHS to see the 150th Anniversary Exhibit and the pottery display, and participate in the annual KidsView Auction. KidsView Auction pieces have been provided by the generous donations of RWCS members all year round.

Group B will start at Red Wing ArtReach, painting their own vintage Red Wing dinnerware piece. They'll also participate in our "Make your Own Stoneware" activity and create an air-dry clay project to take home. Both groups will have lunch at the GCHS before Group A takes a bus to Red Wing ArtReach and Group B does the GCHS activities.

Efforts will be made to keep siblings in the same group. Lunch will be provided; please inform the RWCS office of any diet restrictions.

Please call the office and register your KidsView participants! Walk-ins will only be accepted if we have enough space for them, so the only way to reserve a spot is to register in advance.

The RWCS wishes to thank our partners Red Wing ArtReach, the Goodhue County Historical Society, and RWCS member volunteers to create a wonderful learning program for our youth members.



1166 Oak St.



436 West 3rd St.



### Red Wing Pottery Canvas & Cookies Class Wednesday, July 10 • 3-5 pm

Red Wing Pottery & Stoneware enthusiasts are invited to join us for a special painting class featuring classic Red Wing pieces. Join us as we guide you step-by-step to create an 11 x 14 acrylic painting of your own. Open to ages 12+. Space is limited so advance registration is recommended. Cost is \$25 per person.

**Art Reach**  
 436 West 3rd St  
 Red Wing MN  
 651-388-4488



Register by calling or visiting [artreachredwing.org](http://artreachredwing.org).

**EDUCATION DAY continued from page 11**

from both Pottery Road and the Stoneware Dump. As always, they love to give away pieces, So please attend and get your piece of the past.

**Speaker Biography:** They joined the RWCS in 2007 and one of their first seminars was Steve Showers Dump Diggers. They talked to Steve about taking them digging and they were hooked. Since that day they are still digging, not as much lately but it is still their passion. They have many amazing pieces and have learned so much of what Red Wing made. They love to share their passion with others. Paul collects salt glaze, advertising, and art pottery. Connie loves all her bowls. They have volunteered for 8 years.

**Red Wing Bowls**

Speaker: Brent Mischke  
Session 3: 1:00 p.m. to 1:50 p.m.  
Session 4: 2:00 p.m. to 2:50 p.m.

**Session Description:** This session will provide an overview of the bowls that were made by the Red Wing companies from the start of stoneware production in the 1870s through the early 1940s.

**Speaker Biography:** Brent Mischke and his wife, Debbie, have been RWCS members since 1980. Brent was born and raised in Red Wing, and his grandmother worked as a decorator at the Potteries for 20 years. Areas of collecting interest include Saffron

Ware, Gypsy Trail, Red Wing bowls and New Brighton (PA) stoneware. Brent has been an active volunteer for the past 9 years.

**Off-Site Tours****A Tour through Oakwood Cemetery**

Onsite at Oakwood Cemetery  
1258 Cherry St, Red Wing, MN  
Speaker: Dustin Heckman  
Session 1: 10:00 a.m. to 11:50 a.m.

**Session Description:** Journey through one of the cemetery's most historic sections as you visit the final resting places of some of Red Wing's most notable names, including Reverend Joseph Hancock, Abraham E. Welch, T.B. Sheldon, and more. Learn the difference between male and female Victorian mourning customs, the meanings behind tombstone symbolism, and what life was like for a 19th century Red Wing resident.

**Speaker Biography:** Dustin Heckman has worked in local history for over 11 years throughout Minnesota. He currently is the Coordinator for the Minnesota Alliance of Local History Museums and was the previous Executive Director of the Goodhue County Historical Society. A beginning collector, Dustin lives in Red Wing with his wife and daughter.

**Directions to Oakwood Cemetery (meet at the caretaker office):**

**From River Bluff Education Center (10 min.):** Exit the main parking lot and turn right on to Flower Valley Road. At MN 58N (the traffic light) turn right. Continue down the hill and turn left onto 15th St. Take 15th Street to East Avenue and turn left. East Avenue leads into the entrance of Oakwood Cemetery. Follow the road to the right up the hill. At top of the hill take an immediate left. The caretaker's office is straight ahead on the right.

**From the Pottery Museum (11 min):** Head out of the Pottery Museum parking lot. Turn right on Old West Main Street. At the intersection of Main Street (HWY 61) turn left. At the next traffic light turn right on to West Avenue (by Family Fare). Continue straight to stay on West Ave. Turn left onto West 7th St. Then turn right onto East Ave. East Avenue leads into the entrance of Oakwood Cemetery. Follow the road to the right up the hill. At top of the hill take an immediate left. The caretaker's office is straight ahead on the right.

**Guided Tours of the Pottery Museum of Red Wing (240 Harrison St.)**

Speaker: Docents  
Session 3: 1:00 p.m. to 1:50 p.m.  
Session 4: 2:00 p.m. to 2:50 p.m.

**Session Description:** Ever wander through the Pottery Museum of Red Wing and felt you missed out on details? Well here is your chance to have a guided tour of the Museum by an experienced guide who is able to give you detail and information that you did not know. A great experience if you never have experienced a guided tour. The tours last for about 1 hour.

**From River Bluff Education Center (13 min.):** Exit the main parking lot and turn right on to Flower Valley Road. At MN 58N (the traffic light) go straight on to Pioneer Road. (You will be driving past Minnesota State College-Southeast). Stay on Pioneer Road through the roundabout intersection by Twin Bluff Middle School. Turn right on to Hay Creek Valley Road and continue on to Featherstone Road. At the stop sign, turn left on to Tile Drive. Turn left on to Withers Harbor Drive (Perkins Restaurant will be on your right). Turn on the second driveway by the Bierstube Bowl and Grill. Continue on past the two sets of red garages. The Pottery Museum will be on your right.

**Midtown Antiques**

**Stillwater, MN, located on the St. Croix River just east of St. Paul**  
Our 65 dealers invite all conventioners to browse the three floors with many Red Wing pieces including crocks, jugs, dishware and souvenir items in the biggest antique & collectible mall in the upper Midwest



**Midtown Antiques, 301 Main Street South, Stillwater MN**

**Hours: Mon -Thur 10 – 6, Fri & Sat 10 – 8, Sun 11 – 6**

**Phone: 651-430-0808**

**Midtownantiques.com**

**Midtownantique@gmail.com**

**Check us out on Facebook and Instagram**

## RED WING COLLECTORS SOCIETY INC. COMMEMORATIVE INFORMATION

1977 Salt Glaze Crock.....250	2002 5 gal. Ball Lock Packing Jar.....6,888	2012 Chromoline Vase A 2,900 3,236 total B 300 C 36
1978 Common Jug.....350	2003 Leaping Pegasus figurine planter.....6,089	2013 Stoneware Dog A 2,718 3,025 total B 300 C 37
1979 Butter Churn.....400	2004 Brushware Vase.....5,790	2014 Success Filter A 2241 2491 total B 212 C 38
1980 Spongeware Bowl.....400	2005 Red Wing Self Draining Jar.....5,323	2015 Canteens A 1943 2180 total B 198 C 39
1981 Brown-top Jug.....750	2006 Round-Up Teapot.....5,191	2016 Brown Top Fancy Jug with Advertising A 1758 1990 total B 192 C 40
1982 Cherry band Mug.....697	2007 5 gal. Birch Leaf Threshing Jug.....4,500	2017 40 Gallon Red Wing Crock A 1650 total 1860 B 170 C 40
1983 Stone Mason Fruit Jar ....1,026	2008 Century of Progress Transportation Mug.....3,700	
1984 Salt-glazed Cooler.....1,161	2009 Red Wing Advertising Bean Pot.....3,606	
1985 Ice Water Cooler.....1,750	2010 Stoneware Pig.....3,421	
1986 Acid Proof Measure.....1,982	2011 4 gal. salt glaze churn ....3,300	
1987 Red Wing Ashtray.....2,328		
1988 Pompeii Plate.....2,600		
1989 Gray Line Pitcher.....2,682		
1990 Fancy Jug.....3,540		
1991 Pantry Jar.....3,551		
1992 North Star Jug.....4,260		
1993 Chicken Fountain.....4,819		
1994 20-lb Crock.....5,660		
1995 Giraffe Planter.....6,186		
1996 Cookie Jar.....7,175		
1997 20# Salt Glaze Crock.....7,508		
1998 Blue Iris Pitcher.....7,564		
1999 5 Gal. Koverwate.....7,444		
2000 Hamm's Pitcher.....7,190		
2001 Sponge Bowl.....6,901		



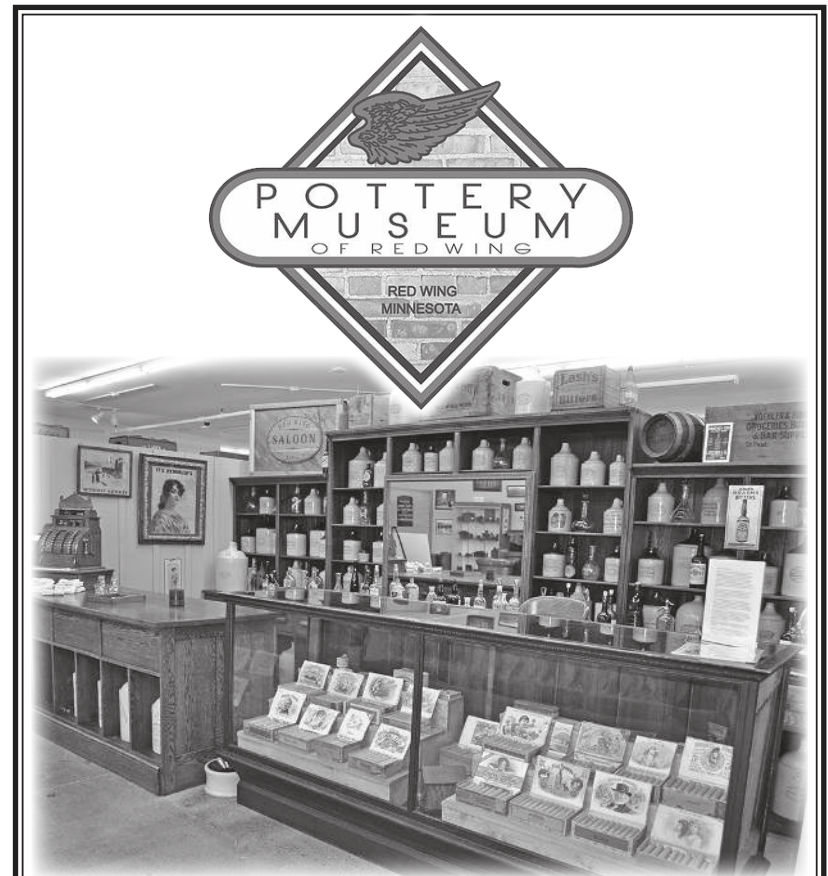
Commemorative Numbers for 2018	
Version A	1282
Version B	130
Version C	39
<b>TOTAL</b>	<b>1451</b>

2-inch glazed  
flower pots

Accessory

## Chapter Meetings Thursday: July 11 1:00 p.m. to 2:00 p.m.

Gopher Chapter..... C 100	Southwest Chapter..... C 105
Iowa Chapter..... C 101	Trails West Chapter..... A 115
Lewis & Clark Chapter..... C 102	Wisconsin Chapter..... F 103
Siouxland Chapter..... C 104	



We are thrilled to report that your Pottery Museum of Red Wing is amazingly successful.

More than 30,000 visitors last year over a five-month period enjoyed your museum. Our goal for 2019 is to have over 45,000 visitors.

The new 1919 Red Wing Saloon display has created a lot of excitement. New items are added weekly.

In January of 1910 Red Wing sold over 6,400 advertising jugs.

Prohibition started in 1920 and had a huge negative effect on production.

The 20th Anniversary of the Museum will be in 2021. If you have any ideas of how we can celebrate this milestone, we would like very much to hear from you.

Our vision for the next 3-5 years is in progress.

Your generous and continuous support is needed and appreciated to keep your world class museum growing.

## RED WING ARTS

Find us around the city and at the Depot Gallery!



**Gallery Exhibits all year** @ The Depot Gallery  
**Concerts in the Park:** Wednesdays at 7pm June, July & August  
**Plein Air Festival:** June 17-22, 2019  
**Red Wing Arts Fall Festival:** October 12 & 13, 2019

We are the Pollinator Park, Veteran's Memorial, Welcome Mural and much more! Visit our website for exhibit details and to learn more about events and classes through Red Wing Arts.  
[redwingarts.org](http://redwingarts.org)



## CLASSIFIEDS

**FOR SALE:** All RWCS commemoratives including duplicates for 1977 thru 2018. Excellent condition with three specials. Total of 109 pieces for these 42 years. Sold together. Many Red Wing collecting books including 1st & 2nd Viel Clay Giants books. Newsletters dating back to 1980. Many of the original storage boxes. \$7900. Call or text 952-334-0000.

**WANTED:** 2 and 3-gallon Elephant Ear Ice Water coolers and any other 2 gallon Ice Water. Call or text 907-252-6799. (12/19)

**WANTED:** Ash receivers, rooster vases, and any other animals. Call or text 907-947-1765. (12/19)

**FOR SALE:** RWCS COMMEMORATIVES – 1977 through 2018 includes all books, accessory pieces and two specials \$5500. Also 1995 through 2015 sold in lots of three. Will deliver to the convention. Contact [catsquared@charter.net](mailto:catsquared@charter.net), 989-832-2527 or 989-859-2333 (text).

**WANTED:** Still, and always looking for jugs and crocks with Montana advertising. Working hard to improve my collection. Contact Aaron at [abdliss@3riversdbs.net](mailto:abdliss@3riversdbs.net) or call 406-788-7851.

**WANTED:** Montana born & raised – looking for Montana advertising jugs & crocks. Call or text 406-945-0434. (12/19)

# SHOW & SALE

## SATURDAY, JULY 13 • 10:30AM - 1:30PM

**FREE &  
OPEN TO THE  
PUBLIC!**

9AM for Registered RWCS Members

River Bluff Education Center, 395 Guernsey Lane, Red Wing, MN  
Enter @ Door 8 - Watch for Signs

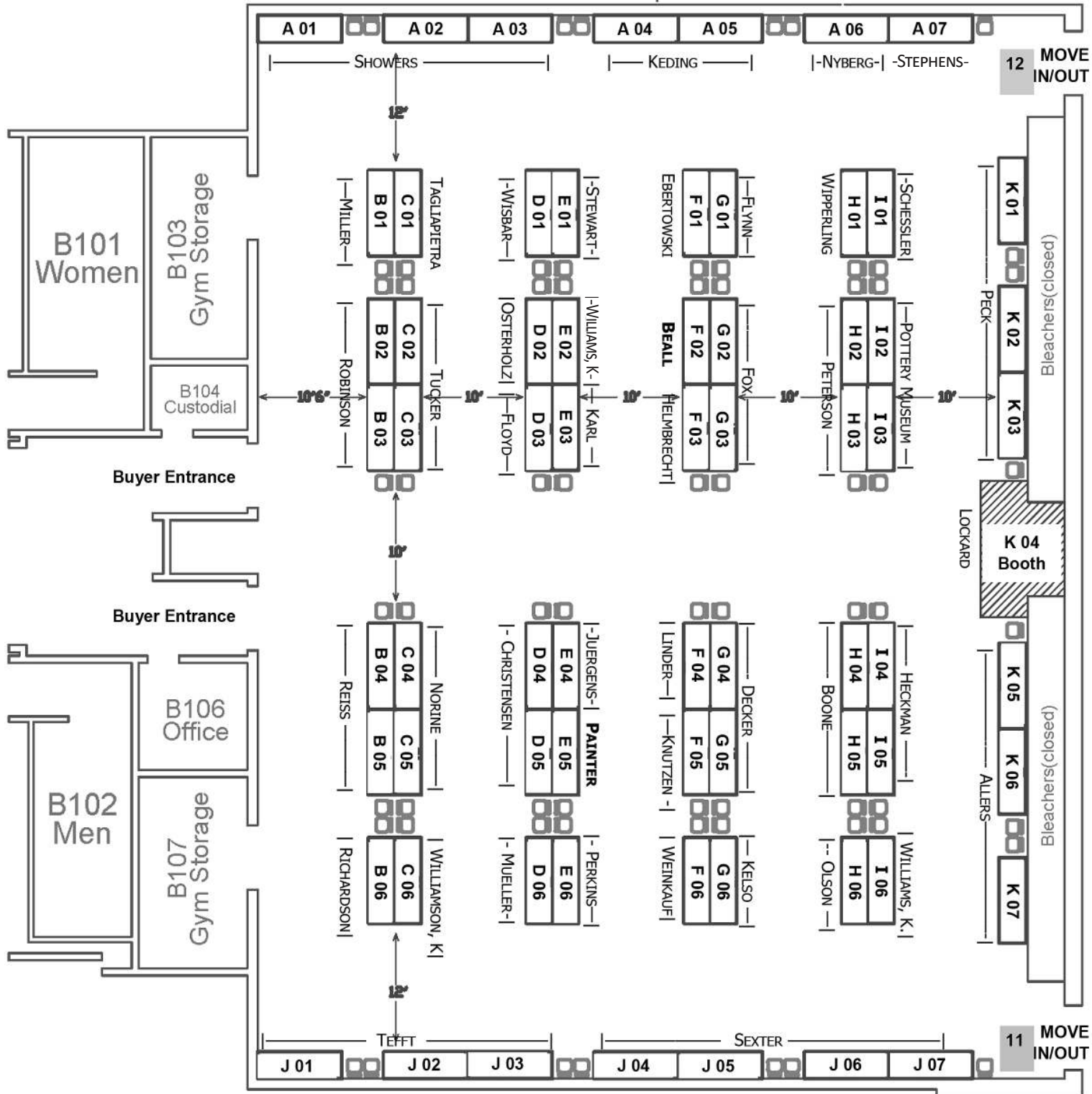


Table	Name
A 1-3	SHOWERS, STEVE
A 4-5	KEDING, MONICA
A 6	NYBERG, CURT
A 7	STEPHENS, TREVOR
B 1	MILLER, WAYNE
B 2	ROBINSON, MIKE
B 3	ROBINSON, RUSSA
B 4-5	REISS, RAY
B 6	RICHARDSON, JUDITH
C 1	TAGLIAPIETRA, JEFF
C 2-3	TUCKER, ANN
C 4-5	NORINE, JAMES
C 6	WILLIAMSON, KENT
D 1	WISBAR, GARY
D 2	OSTERHOLZ, LORRAINE
D 3	FLOYD, JEFF
D 4-5	CHRISTENSEN, JACK
D 6	MUELLER, MICHELLE
E 1	STEWART, LINDA
E 2	WILLIAMS, KENNETH
E 3	KARL, MATT
E 4	JUERGENS, JAY
E 5	PAINTER, WYN
E 6	PERKINS, DOUG
F 1	EBERTOWSKI, MARK
F 2	BEALL, GLENN
F 3	HELMBRECHT, GAYLORD
F 4	LINDNER, ROSEANN
F 5	KNUTZEN, DAVID B
F 6	WEINKAUF, GARY
G 1	FLYNN, PRISCILLA
G 2-3	FOX, JOE
G 4-5	DECKER, DENNY
G 6	KELSO, MIKE
H 1	WIPPERLING, STEVE
H 2-3	PETERSON, LARRY
H 4-5	BOONE, CHRISTINE L
H 6	OLSON, CLIFFORD
I 1	SCHESSLER, LINDA
I 2-3	POTTERY MUSEUM OF RED WING
I 4-5	HECKMAN, DUSTIN
I 6	WILLIAMS, KEVIN
J 1-3	TEFFT, GARY
J 4-7	SEXTER, ROGER
K 1-3	PECK, GAIL L
K 4	LOCKARD, TIM
K 5-7	ALLERS, DAN

## RWCS CHAPTER PRESIDENTS

**BADGER CHAPTER**

Bob Morawski, President  
2130 S Ridgeway Dr  
New Berlin WI 53146  
262-853-8269  
morawskib@yahoo.com

**CANNON VALLEY CHAPTER**

Wayne Miller, President  
2669 Country Ct  
Red Wing, MN 55066-4121  
wjmiller@charter.net

**GOLDEN STATE CHAPTER**

Bruce Cameron, President  
PO Box 690  
French Camp, CA 95231  
510-537-0325  
ffr554@aol.com  
goldenstateredwing.com

**GOPHER CHAPTER**

Michelle Mueller  
Membership Chair  
10736 Perry Drive N  
Brooklyn Park, MN 55443  
763-493-2638  
rwprincess@email.com

**ILLINOIS CHAPTER**

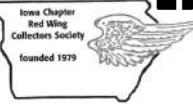
Vacant

**INDIANA WINGERS CHAPTER**

Mitch Close  
104 E. Henry Street  
Syracuse IN 46567  
mitchclose63@gmail.com  
574-518-1548

**IOWA CHAPTER**

Sandy Short  
804 W Merle Hibbs Blvd  
Marshalltown IA 50158  
641-351-4163 (H)  
605-261-5646 (C)  
sandy@maidrite.com

**LEWIS & CLARK CHAPTER**

Sheldon Bohnoff, President  
6781 Highway 22 S.  
New England, ND 58647-9767  
701-579-4522  
sheldon@ndsupernet.com

**NEBRASKA CHAPTER**

Tom Sellner  
623 North 12st  
Plattsmouth, NE 68048-1014  
402-917-7883  
thomas.sellner1@gmail.com

**PUGET SOUND CHAPTER**

Wally Armstrong, President  
24129 Old Owen Rd  
Monroe, WA 98272-7681  
360-794-7172

**ROCKY MOUNTAIN CHAPTER**

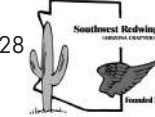
Vacant

**SIouxLAND REDWINGERS**

Jon Henslin  
1020 Lake Alice Dr  
Clear Lake SD 57226  
320-905-5338  
jnhenslin@itcmilbank.com

**SOUTHWEST REDWINGERS**

Kent Williamson, President  
3104 East Broadway Rd Lot 328  
Mesa, AZ 85205  
rwscockent@juno.com

**SUNSHINE STATE REDWINGERS**

Don Peterson, Vice President  
2902 Limpkin Ln.  
Kissimmee, FL 34746-2745  
612-859-2101  
djpeterston4476@gmail.com

**TRAILS WEST CHAPTER**

Debbie Mischke, President  
25 White River Lane  
Defiance, MO 63341  
636-828-5811 (H)  
314-750-3665 (C)  
bmischke@centurytel.net  
trailswest.redwingcollectors.org/

**WISCONSIN CHAPTER**

Pete Pavloski, President  
1411 Rapids Trail  
Nekoosa, WI 54457  
715-325-3715  
pbpav@hotmail.com

**WOLVERINE CHAPTER**

Ken Bahlman, President  
44826 Malow Ave.  
Sterling Heights, MI 48317  
586-731-4628

**RWCS FACEBOOK CHAPTER**

David "Yoshi" Hoffman  
2821 Lynx Rd  
Wausau, WI 54401  
715-355-8521  
senorh63@charter.net



## BOARD OF DIRECTORS / CONVENTION POSITIONS

*President*

**PAUL WICHERT**  
W247S7000 SUGAR MAPLE DR  
WAUKESHA, WI 53189  
414-731-0218  
redwingr@gmail.com  
president@redwingcollectors.org

*Vice President*

**RUSSA ROBINSON**  
1970 Bowman Rd  
Stockton CA 95206-9654  
209-471-4084  
rrussa@aol.com  
vicepresident@redwingcollectors.org

*Secretary*

**ANGELA SHEFVELAND**  
905 HAWTHORN ST.  
RED WING, MN 55066  
816-456-2524  
Angela.shefveland@gmail.com  
secretary@redwingcollectors.org

*Treasurer*

**DAN BECK**  
2215 HILL PLACE SW  
ROCHESTER, MN 55902  
507-398-6358  
bucksplacewi@gmail.com  
treasurer@redwingcollectors.org

*Historian*

**NANCY LAMBERT**  
17 NEWCASTLE LANE  
BELLA VISTA, AR 72714  
785-691-7213  
nancy194805@gmail.com  
historian@redwingcollectors.org

*Representatives At Large*

**DIANA BAILEY**  
PO BOX 170  
CEDARBURG, WI 53012  
414-303-2691  
dbailey45@wi.rr.com  
repatlargewest@redwingcollectors.org

**RICHARD A. NATYNSKI**

N50 W25078 WILLIAM DR  
PEWAUKEE, WI 53072  
608-617-7424  
rnatynski@frontier.com  
repatlargeeast@redwingcollectors.org

*Education Manager*

**DAVID HOFFMAN**  
2821 LYNX ROAD  
WAUSAU, WI 54401  
715-574-7536  
otonoh@yahoo.com  
education@redwingcollectors.org

*Commemorative Manager*

**BOB MORAWSKI**  
2130 S. RIDGEWAY DR.  
NEW BERLIN, WI 53146  
262-853-8269  
morawskib@yahoo.com  
commemorative@redwingcollectors.org

*Acting Auction Manager*

**BRUCE SELFRIDGE**  
29410 RIVER RD  
CLOVERDALE, CA 95425  
707-477-8968  
67bigblock@comcast.net

*Display*

**TYLER GREEN**  
2501 S JEFFERSON AVE  
SIOUX FALLS, SD 57105  
605-251-9944  
Tylergreen.7@gmail.com  
display@redwingcollectors.org

**Youth Programs (Kids View & Young Collectors)**

Goodhue County Historical Society  
Red Wing Art Reach  
*Registration*

**HEIDI HAHLEN**

4909 Foxfire Trail  
Middleton WI 53562  
608-827-0331  
hshahlen@tds.net

*Membership Committee Chair*

Open  
*Technology Committee Chair*  
**MIKE STENSTROM**  
6204 SHAWNA ST  
WESTON, WI 54476  
mike.stenstrom@gmail.com  
715-218-8216  
*Show & Sale*

**GAIL PECK**

2504 E 21ST  
FREMONT, NE 68025-2787  
402-721-5721  
gpeck1@neb.rr.com

*Newsletter Editor*

**RICK NATYNSKI**  
PO Box 198  
Pewaukee, WI 53077  
Newsletter@redwingcollectors.org  
414-416-9464

**RWCS BUSINESS OFFICE**

240 Harrison St Unit 3  
Red Wing MN 55066

PO BOX 50  
Red Wing MN 55066  
Cell: 651-388-4004

Stacy Wegner  
Executive Director  
swegner@redwingcollectors.org  
director@redwingcollectors.org

# Thank you to Red Wing Area businesses for your sponsorships and donations

## CONVENTION SPONSORS



## GOLD SPONSORS

Rodeway Inn  
Randy's Restaurant  
Treasure Island Resort and Casino  
Mount Frontenac Golf Course

## SILVER SPONSORS

Bayside Tap & Steakhouse  
Vogel & Gorman PLC  
Red Wing Downtown Mainstreet  
Goodhue County Historical Society  
Marie's Underground Grill & Tap House  
Third Floor Antiques  
Pottery Place Antiques  
Red Wing Shoe Store  
Hanisch Bakery and Coffee Shop  
Liberty's Restaurant and Lounge  
Red Wing Confectionery

## MEMBER MEET UP SPONSORS & SUPPORTERS



Siouxland Chapter  
RWCS Facebook Chapter  
Gopher Chapter  
Iowa Chapter  
Trails West Chapter  
Cannon Valley Red Wing Collectors Club

## SUPPORTERS

West End Liquor  
Kelly's Tap House & Grill  
Uffda Shop  
St. James Hotel  
Whimsy's Closet  
Bev's Cafe  
Backwoods Framing & Engraving  
Josephson's Clothing Store  
Sturdiwheat  
Cut Above Home  
Falconer Vineyards

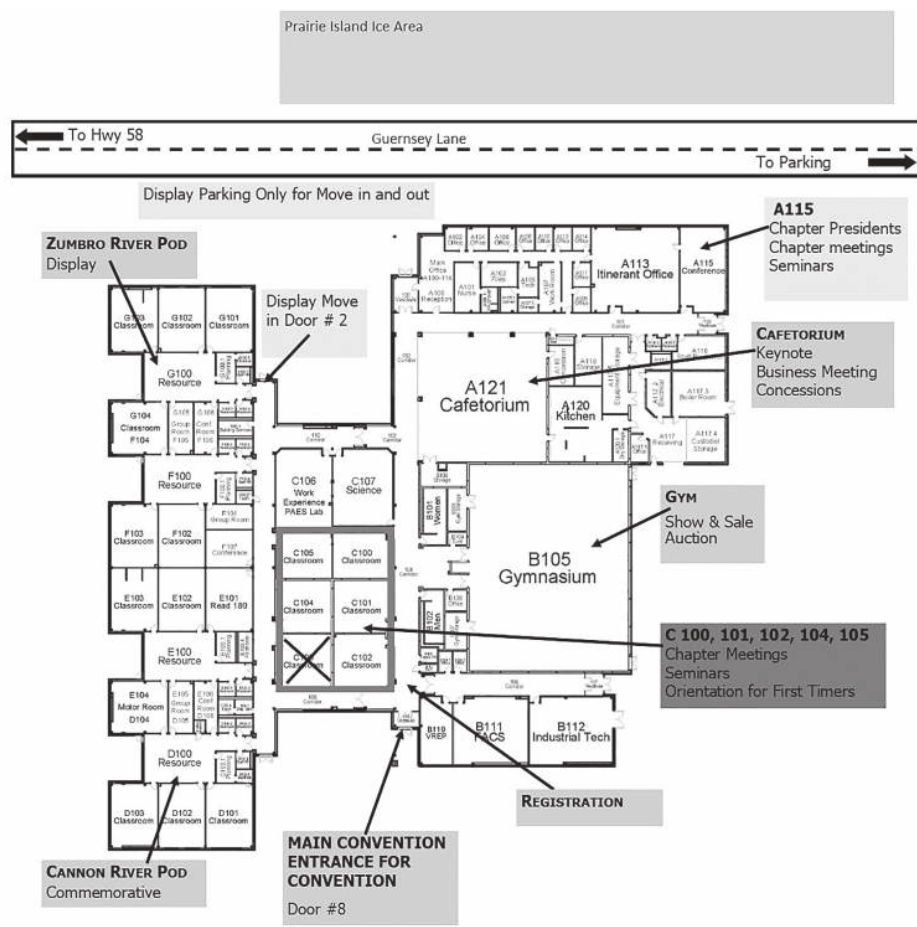


**River Bluff Education Center**  
395 Guernsey Lane, Red Wing

**Directions to River Bluff Education Center from downtown Red Wing**  
On Highway 58 (going South from Red Wing), Turn East (Left) on Guernsey Lane (By KWNG 106 FM). River Bluff Education Center will be on your right.



Parking is available past the school in the Red Wing High School lot. The lot is located between River Bluff Education Center and Red Wing High School. Watch for signs for entrance to school at Door 8.



Red Wing High School parking lot, please park here.



# 2019 CONVENTION SCAVENGER HUNT

**Starts Thursday, July 11**

**SEARCH EACH  
LOCATION LISTED IN THE BOXES  
BELOW FOR AN ITEM MARKED  
WITH THE SCAVENGER HUNT LOGO**

## ENTRY FORM

**WRITE THE CODE FOUND IN THE CORRECT BOX BELOW**

POTTERY  
MUSEUM OF RED  
WING

A SELLER'S BOOTH  
AT POTTERY PLACE  
PARKING LOT SALES  
OR HOLIDAY INN  
ROOM SALES

CONVENTION  
REGISTRATION  
AREA AT RIVER  
BLUFF SCHOOL

RWCS THURSDAY  
NIGHT AUCTION  
RIVER BLUFF  
SCHOOL

COMMEMORATIVE  
ROOM RIVER BLUFF  
SCHOOL

DISPLAY ROOM  
AT RIVER BLUFF  
SCHOOL

ENTRIES MUST BE RECEIVED BY **2:00 PM FRIDAY AT THE RWCS REGISTRATION TABLE AT RIVER BLUFF SCHOOL** - WINNER WILL BE DECIDED FROM ENTRIES WITH THE MOST CORRECT ANSWERS.

**YOU MUST BE PRESENT AT MEMBER MEET UP FRIDAY AFTER THE BUSINESS MEETING TO WIN**

NAME: \_\_\_\_\_

# Exhibit, growler are highlights of GCHS Sesquicentennial

By Ruth Nerhaugen  
Contributor

Prepare to celebrate the Goodhue County Historical Society's Sesquicentennial.

"Celebrating the Society," a new exhibit containing 150 objects and images representing the society's 150-year history, opened May 31 at the History Center, 1166 Oak St., Red Wing.

That date also was the launch date for a unique fundraiser. People will be able to preorder a limited edition growler that they later can have filled with a unique beer being created by local brewers using a historic recipe.

Elizabeth Koele, the society's curator of objects and exhibits, was tasked with creating an exhibit for the sesquicentennial. Koele said, "What better way to celebrate than an exhibit displaying all the things we've collected over 150 years."

Typically, visitors see only a small amount of the 86,000-plus items in the collection, she said. So she studied a new inventory of the collection and sought advice from local residents. From that, she created a short list of highlights then, working with archives and library manager Afton Esson, gathered photographs as well as objects and stories surrounding those 15 people, places and events.



A Civil War drum is part of the "Celebrating the Society: 150 years at GCHS" exhibit at the Goodhue County History Center.

The topics cover a wide range of subjects, from ski jumping and politics to the Prairie Island Indian Community, Zumbrot's covered bridge, the county fair, agriculture and more.

The exhibit will have interactive elements, Koele said. People will be able to use a giant blow-up of an overview of Red Wing for a photo backdrop, hear recordings of Native American music, add their opinions on a Post-It wall, and make birthday cards for a 150th birthday party planned for July 7.

Society staff also will take preorders for the Sesquicentennial growler, which will make its actual debut at a "Hats Off to History" Gala Nov. 16 at the History Center – just after the exhibit closes.

The society worked with Red Wing Brewery to create not only a limited edition growler, but also a unique beer made using a historic recipe, according to Executive Director Robin Wipperling.

The first keg of the new brew will be tapped Nov. 17 at Red Wing Brewery on Old West Main Street.

Volunteers Steve and Barb Brown

worked on the growler project with Red Wing Brewery co-owners Scott Kolby and William "Norm" Norman.

The brewery provided Goodhue County's oldest known beer label, which was used by brewer Jacob Christ. Society board member Alyssa Riegelman created a "Hats Off to History" logo for the back side of the growler.

Growlers can be ordered for \$25, including tax. They will not be shipped; the empty vessels must be picked up in Red Wing on or after Nov. 16. Buyers can choose to have them filled with the 150th beer or another brew or root beer, at an additional cost.

For more information, to volunteer or to help the historical society reach its goal of 150 new members this year, call the History Center at 651-388-6024 or go online to [www.goodhuecountyhistory.org](http://www.goodhuecountyhistory.org).



Goodhue County's oldest beer label is on the front and the "Hats Off to History" logo is on the back of the GCHS Sesquicentennial growler. People can preorder the growler and pick it up in November.

Buy 1  
SHORT-SLEEVED  
SPORT SHIRT

2nd Shirt  
50% OFF\*

\*Equal or Lesser Value

JOSEPHSON'S  
ESTABLISHED 1878

215 Bush Street, Red Wing, MN  
651-388-4261

Store Hours: Mon.-Sat. 9-5, Thurs. 'til 8 PM

## POTTERY MUSEUM OF RED WING

240 Harrison St., Red Wing • 651-327-2220

Learn the history of the Red Wing Clay Industries  
Over 9,000 Items on Display



Purchase tickets today at the door.  
**WINE-ING FOR RED WING**  
Wednesday, July 10 6-9pm Fundraiser Auction 7pm  
OPEN TO THE PUBLIC

FREE Admission to the  
Museum  
Tues-Sat 9-5  
Sun 11-4

[www.potterymuseumredwing.org](http://www.potterymuseumredwing.org)

CONVENTION

**MEET UP**

FRIDAY SCHOOL CAFETERIUM

5:30PM - 6:30PM

ALL ATTENDEES WELCOME!

SPONSORED BY

Stockholm Pie's  
Pie Plate  
Cafe  
&  
Red Wing General Store

Friday, July 12,  
2019  
School Cafeterium  
5:30 - 6:30 pm

Join your fellow collectors following the business meeting for fun and prizes.

Thank you to our Member Meet Up Sponsor **Stockholm Pie's Plate Cafe' & Red Wing General Store** located in Pottery Place Mall right here in Red Wing. We will be serving their world-famous pies along with ice cream and beverages.

The RWCS also wishes to thank the following RWCS Chapters for supporting this event!

**Siouxland Chapter**      **Gopher Chapter**      **Iowa Chapter**  
**RWCS Facebook Chapter**      **Trails West Chapter**      **Cannon Valley Red Wing Collectors Club**

From Trivia brought to you by the RWCS Historian to the **Convention Scavenger Hunt**, pie & ice cream, door prizes, and more.

Come spend some social time with your fellow collector friends or make new ones!



**2020 CONVENTION**  
**JULY 9-11 • RED WING, MN**  
**ERWCS.ORG**



## 2019 Convention Button

The Red Wing  
Collectors Society  
Facebook  
Chapter has created,  
produced, and will be  
selling the 2019  
Convention Button.



**\$4 onsite at Convention**  
**\$7 to be mailed**

Buttons Sale will at River Bluff Education Center  
Thursday, July 11 from 8 am – 5:30 pm  
Friday, July 12 from 8 am – 2 pm

Watch for signs and pick up your button at the  
Convention. Not able to attend the convention, but  
would like a button mailed to you for \$7?  
Please contact David Hoffman, RWCS Facebook  
Chapter President call/text 715-574-7536 or  
email otonoh@yahoo.com.

RED WING COLLECTORS

**MID WINTER**

Bettendorf, IA

**FEB 28- MAR 1, 2020**

# Larry's jugs

## ANTIQUES

1811 Old West Main Street  
Red Wing, MN 55066

Shop: 651-388-3331  
Cell: 612-719-6113

Watch our  
Facebook page for  
new items as they  
arrive!



We carry a large inventory of antiques, including: porcelain signs, advertising tins, Coca-Cola machines, fountains and signs, scales, gum ball machines, antique slot machines and cash registers, clocks, coffee grinders, stoves, oak furniture, good Eastern stoneware, antique toys and more than 1,000 pieces of stoneware.

### REGULAR HOURS:

April thru December: Thursday thru Sunday, 10 a.m. to 5 p.m.

### 2019 CONVENTION HOURS:

Friday, July 5 thru Friday, July 12: 8 a.m. to 6 p.m.

## WOLFRAM'S GENERAL STORE

### RAINBOW ESTATE SALES

Saturday September 21, 8:00 – 4:00

Sunday September 22, 9:00 – 3:00

(Half-Price and Reductions)

Location: Hart General Store, Hwy 43, Hart MN



Please join us for this incredible sale at the Wolfram's general store which was a business for over 100 years. The store is full of old dead stock including Wolfram adv Redwing spongeband salt boxes, casseroles w/lids and pitcher, winged crocks 2 gal thru 25 gal and shoulder jugs, many adv tin signs, poster and paper items, breweriana, petroliana and many more unique items! A sign-up sheet will be used and you must remain on the premises until your number is handed out at 7:00. This is the order of entrance to the sale which will start promptly at 8:00 am. Hope to see you there!! All items are priced for you and we now accept credit and debit cards! If you have a need for an estate sale, or if you would like more information regarding this sale, call June @ 507-457-9700 or [rainbowstatesales@gmail.com](mailto:rainbowstatesales@gmail.com)

FOR PICTURES & COMPLETE LISTING PLEASE VISIT  
[www.rainbowstatesalesbyfox.com](http://www.rainbowstatesalesbyfox.com)

