

1977 ← BACK TO THE FUTURE → 2017

*Red Wing
Collectors Society Inc.*
Founded 1977

4 0 T H A N N I V E R S A R Y

JULY 6-8, 2017

**MINNESOTA STATE COLLEGE SOUTHEAST
RED WING, MN**

Pottery Auctions

Learn about Red Wing Clay in Educational Seminars

NETWORK WITH OTHER COLLECTORS!

Memorabilia & Pottery Displays

Youth Programs



POTTERY (& ANTIQUE) SHOW & SALE

Saturday July 8 - Red Wing National Guard Armory

FREE & OPEN TO THE PUBLIC 10:30 AM-1:00 PM

SEE
PAGE 14

SPONSORED BY

larry's jugs
ANTIQUES



 **Associated Bank**



JOIN TODAY!

ERWCS.ORG

800.977.7927



Greetings from the President

Welcome to the 40th Anniversary Celebration of the Red Wing Collectors Society! This year's RWCS Convention takes us 'Back to the Future' as we return to what some may remember as the Vo-Tec, now named the Minnesota State College Southeast. While this venue may be new to some of our members, others still remember the fun, excitement and camaraderie they shared back in our earlier days. Indeed, many of our traditions began at the old Vo-Tec.

Over the years, the energy of this gathering of collectors has become larger than the Convention itself. While the Convention officially starts on Thursday, many collectors come 'home' for the entire week. There are two stoneware auctions early in the week as well as 'Wine-ing for Red Wing' - the premier fund raising event for your Pottery Museum of Red Wing. 'Wine-ing' will once again be held on Wednesday evening and it's an event you won't want to miss. Tickets are available in the Museum gift shop for early purchase or can be purchased during the event.

I'd like to thank our Historian, Nancy Lambert, and her Convention committee for a fantastic Convention Itinerary. Additionally, they have created special cloisonné 40th Anniversary pins for all Convention attendees. These will be handed out at registration. They also have created official 40th Anniversary T-shirts and a limited number of special 40th Anniversary tiles.

Since there are many changes during Convention this year, our board members will wear special 'Can I help you?' shirts. If you need any type of help or support, we are here to help you.

On Thursday morning, we have a special keynote panel of RWCS members through the decades. They will share stories about how they got interested in stoneware and pottery, RWCS memories, first Convention memories, etc. Following keynote, we will present RWCS Charter Members with a small memento, move to the commons to take a group photo of our Charter Members, and have an anniversary celebration. Also the 40th Anniversary RWCS Commemorative, one you will be thrilled to own, will be unveiled.

Thursday afternoon, the RWCS Auction will be held at the Armory on the south side of Red Wing. Since parking is limited, we will have a free shuttle bus service running from/to the armory and the Correctional facility which has volunteered 200 parking spaces for both the auction and the Saturday Show & Sale. The Correctional facility is south of the Armory. Watch for the signs. Our bus driver, Dean Hove, is volunteering his time, so please tip accordingly.

On Friday, we will enjoy an education day that is second to none, a display area that will "knock your socks off," and get up to speed at the RWCS Business Meeting. Then we'll move to the Pottery Museum of Red Wing, where CROCK HOP will be held from 5 to 6:30 p.m. The event will feature a Back-in-Time Scavenger Hunt, door prizes, Back to the Future movie trivia contest, sliders and root beer floats. In case you missed them at MidWinter, Marty McFly and Doc Brown will make a return appearance at CROCK HOP. You can have your photo taken with them and have it emailed to you.

Saturday morning at the Armory, the "Show & Sale" welcomes members at 9 a.m. and free public admission at 10:30. Again, the shuttle bus will be running. We are expecting a good crowd searching for new treasures. Our 40th Anniversary Convention culminates Saturday evening with a wonderful banquet at the Mt. Frontenac Golf Club.

Also, On behalf of our board and members, I want to sincerely thank our Executive Director, Stacy Wegner, who has worked tirelessly to find the Convention a new home, negotiate new contracts, handle the many changes that came along with that and helped coordinate the 40th Anniversary Committee. Special thanks to Todd Avery and Luke Wegner who helped us tremendously in finding our new home. Thank you, also, to our board and the many members, who jumped in and helped us get this done. We couldn't have done it without you.

Whether you come to Convention to hunt for that special piece, renew friendships, tour your museum, visit favorite antique stores and restaurants, enjoy the beautiful City of Red Wing, or all of the above, we hope that this Convention is everything you hoped for! Safe travels home!

Paul Wichert
President, Red Wing Collectors Society



Paul Wichert
President

Welcome from the Executive Director

Dear RWCS Members,

This year's Red Wing Collectors Society Convention will be an exciting one, as we travel back in time for the Society's 40th Anniversary! Longtime members will remember spending many hours at two of our event's "new" venues this year, while new members will experience them for the first time. The passion and comradery of the membership is sure to make this a convention like no other.

This supplement is the best resource for you to find out WHERE and WHEN Convention events are this year. Minnesota State College Southeast will be the main site for Convention activities, while the members-only Thursday Night Auction and Saturday Show & Sale will both be held at the Red Wing National Guard Armory. Members are encouraged to check out our club's website at ERWCS.org for Convention information, too.

This exciting new Convention would not be possible without the support and time of so many volunteers this year. A special "shout out" goes to RWCS Member Todd Avery for working through and looking at a number of potential locations and the RWCS Board of Directors for taking time to come to Red Wing to make this Convention come together for the 40th Anniversary.

Finally, I would like to thank the generous support of so many businesses and organizations in Red Wing. Without their support and welcoming manner each year, the Convention would not be our group's best experience of the year.

Thank you again for coming to Red Wing! I look forward to seeing everyone at the College and Armory.

Have a great Convention!

Stacy L. Wegner
Executive Director



Stacy Wegner
Executive Director

Welcome from the History Center

The Goodhue County History Center is located at 1166 Oak St., Red Wing.

Welcome back fellow collectors! I cannot believe that it is convention time once again! This is such a fun time of year for us at the Goodhue County History Center. We've gotten to know many of you over the years and look forward to seeing your faces at educational seminars, Show & Sale, and other convention festivities. Carve out some time to visit the History Center to see our new exhibit just opened last fall called Downstream Stories. It features lots of great stories about what it means to live along the Mississippi River. We are also hosting a traveling exhibit from the Minnesota History Center titled Coming of Age: The 1968 Generation. Reminiscence with your friends about your favorite sixties music, your super groovy style, or all the turmoil and chaos of that era.

Enjoy Red Wing and all that it has to offer this year at Convention!

Dustin B. Heckman
Executive Director, Goodhue County Historical Society



Welcome to Red Wing!

Welcome to the Red Wing Collectors Society Convention - and welcome to Red Wing! From the rugged magnificence of our bluffs to the ornate beauty of The Sheldon Theatre, the abundance of outdoor activities, historic sites, world famous boots, and, of course, a plentitude of pottery, Red Wing is your chance to experience it all. Take a break to hike Barn Bluff, bike the Cannon Valley Trail, visit the Pottery Museum, picnic on Memorial Bluff, or visit our wineries and brewery, play golf, dine in our first-class restaurants, or shop in one of our many locally owned antique stores, art galleries or boutique shops. Thank you for visiting Red Wing. I look forward to seeing you!

Sean M. Dowse
Mayor



Sean Dowse
Red Wing Mayor

Greetings from the RWCS Foundation

On behalf of the foundation we welcome you to Red Wing!

I would like to invite you to visit the Pottery Museum of Red Wing to see our incredible collection of stoneware, art pottery and dinnerware. Many new items have been added to our collection this year on display. New for 2017 is our mid century modern display featuring a 1950's kitchen.

On Wednesday, July 5th from 6-9 pm is our annual wine-ing event. You can purchase your ticket in advance at the pottery museum gift store. Hope to see you there!

Museum hours are Tues.-Sat. 9-5 pm, Sun. 11-4 pm. with expanded hours during convention week.

Follow us on Facebook and enjoy your visit to Red Wing and the Pottery Museum of Red Wing!

Sincerely,

Dave Hallstrom
President
Red Wing Collectors Society Foundation



Dave Hallstrom
Red Wing Collectors
Society Foundation /
Pottery Museum
of Red Wing

— Table of Contents —

RWCS Collectors Through The Decades	4
2017 Convention Schedule	5
40th Anniversary	6
Volunteers and Business Sponsors/Donors.....	7-8
Education	9-11
Chapter & Organization Information	12
Show & Sale	14
Crock Hunt.....	16



RED WING COLLECTORS SOCIETY INC. COMMEMORATIVE INFORMATION

1977	Salt Glaze Crock	250	2008	Century of Progress Transportation Mug	3,700
1978	Common Jug	350	2009	Red Wing Advertising Bean Pot	3,606
1979	Butter Churn	400	2010	Stoneware Pig	3,421
1980	Sponge ware Bowl	400	2011	4 gal. salt glaze churn	3,300
1981	Brown-top Jug	750	2012	Chromoline Vase	
1982	Cherry band Mug	697		A 2,900	3,236 total
1983	Stone Mason Fruit Jar	1,026		B 300	
1984	Salt-glazed Cooler	1,161		C36	
1985	Ice Water Cooler	1,750	2013	Stoneware Dog	
1986	Acid Proof Measure	1,982		A 2,718	3,025 total
1987	Red Wing Ashtray	2,328		B 300	
1988	Pompeii Plate	2,600		C37	
1989	Gray Line Pitcher	2,682	2014	Success Filter	
1990	Fancy Jug	3,540		A 2241	2491 total
1991	Pantry Jar	3,551		B 212	
1992	North Star Jug	4,260		C 38	
1993	Chicken Fountain	4,819	2015	Canteens	
1994	20-lb Crock	5,660		A 1943	2180 total
1995	Giraffe Planter	6,186		B 198	
1996	Cookie Jar	7,175		C 39	
1997	20# Salt Glaze Crock	7,508	2016	Brown Top Fancy Jug with Advertising	
1998	Blue Iris Pitcher	7,564		A 1758	1990 total
1999	5 Gal. Koverwate	7,444		B 192	
2000	Hamm's Pitcher	7,190		C 40	
2001	Sponge Bowl	6,901			
2002	5 gal. Ball Lock Packing Jar	6,888			
2003	Leaping Pegasus figurine planter	6,089			
2004	Brushware Vase	5,790			
2005	Red Wing Self Draining Jar	5,323			
2006	Round-Up Teapot	5,191			
2007	5 gal. Birch Leaf Threshing Jug	4,500			



2017 Convention Schedule • Minnesota State College Southeast, Red Wing, MN

TIME	ACTIVITY	LOCATION
Wednesday, July 5		
7:00 – 12:00	RWCS Board of Directors Meeting	215 College
11:00 – 3:00	Pre-registered attendees badge pick up	Pottery Museum of Red Wing, 240 Harrison St
12:00 – 3:00	RWCS Auction Check-In, Catalogs for Sale	National Guard Armory 885 E 7th St, Red Wing, MN
12:00 – 3:00	Display: set up by appointment	College 308 Pioneer Rd 418, 416, 417
6:00 – 9:00pm	RWCS Foundation "WINE-ing for Red Wing"	Pottery Museum of Red Wing
Thursday, July 6 MINNESOTA STATE COLLEGE EVENTS		
8:00 – 2:00	Convention Registration tile pick up & Auction Catalogs For Sale	College Lobby
8:00 – 2:00	Concessions Open: By Red Wing Volleyball Breakfast, Lunch, Beverages and Snacks	Student Commons
8:00 – 10:00	Chapter Presidents Meeting	101 College
8:00 – 10:00	Commemorative Distribution & Silent Auctions Open (silent auctions close 10:30 am Saturday)	318 College
8:00 – 10:00	Set up the Display and Rare Items	418, 416, 417
8:00 – 2:00	Chapter 40 Project Displays Chapter Challenge Pieces (bidding closes at 3pm Friday) Chapter Display Boards	Student Commons & Lobbys
9:00 – 2:00	Sale of Educational Material	Student Commons
9:00 – 10:00	Orientation for Convention First Timers	314 College
9:00 – 12:30	Young Collector Field Trip (page 11) Participants meet to car pool together	Student Commons
10:00 – 2:00	Pottery Demonstration Richard Spiller	Student Commons
10:30 – 2:00	Displays open for viewing, voting closes at 1pm Friday	418, 416, 417
10:00 – 10:30	RWCS Photo Slide Show	314 College
10:30 – 12:00	Welcome Session & Keynote <i>Collectors Through the Decades</i>	314 College
12:00	40th Anniversary Member Celebration (Lunch for purchase)	Student Commons
11:00 – 1:00	Lunch Open	Student Commons
1:00 – 2:00	Chapter Meetings (page 9)	215, 101, 123, 121, 314, 406
1:00 – 2:00	Kids View Set Up	500 Lobby & Classrooms
1:00 – 2:00	Commemorative Distribution (silent auctions close at 10:30 am Saturday)	318 College
AUCTION RED WING NATIONAL GUARD ARMORY		
8:00 – 11:00	Auction Check-In MUST PICK UP BADGE AT COLLEGE!	National Guard Armory 885 E 7th St, Red Wing, MN
8:00 – 11:00	Distribution of Bid Numbers	Armory
3:00 - ?	Auction Catalog for Sale	Catalogs available at College
3:00 pm - ??	Shuttle Service (pages 9-13)	Minnesota Correctional Facility
3:00 – 5:30	Convention Registration – AT AUCTION ONLY	Armory
3:00 – 4:00	Commemorative Distribution	Armory Classroom
3:00 – 4:15	Auction Preview	Armory
4:00 – 8:00	Auction Concessions – Goodhue County Historical Society	Armory
4:30 – ????	Official RWCS Special Auction Commemorative Drawing!	Armory

TIME	ACTIVITY	LOCATION
Friday, July 7 MINNESOTA STATE COLLEGE		
8:00 – 2:00	Convention Registration Open AT COLLEGE Tile Pick UP	College Lobby
8:00 – 2:00	Concessions Open: By Red Wing Volleyball Breakfast, Lunch, Beverages and Snacks	Student Commons
8:00 – 1:00	Displays Open, Voting Closes at 1:00pm Today	418, 416, 417 College
8:00 – 3:00	Chapter 40 Project Displays Chapter Challenge Pieces (bidding closes at 3pm Friday) Chapter Display Boards	Student Commons & Lobby
8:00 – 10:50	Commemorative Distribution & Silent Auction (silent auctions close at 10:30 am Saturday)	318
9:00 – 2:00	Sale of Educational Materials	Student Commons
9:00 – 1:00	Richard Spiller Pottery Demonstration	Student Commons
9:00 – 10:00	Orientation for Convention First Timers	314 College
9:00 – 10:00	Shared Interest Groups	Student Commons
10:00 – 10:50	Adult Educational Seminars (pages 9-11)	101, 123, 121, 314, 406
10:00 – 2:00	Kids View Seminars (Lunch will be provided) (page 11)	500 Lobby & Classrooms
11:00 – 11:50	Adult Educational Seminars (pages 9-11)	101, 123, 121, 314, 406
11:00 – 1:00	Lunch Open	Student Commons
1:00 – 1:50	Adult Educational Seminars (pages 9-11)	101, 123, 121, 314, 406
2:00 – 2:50	Adult Educational Seminars (pages 9-11)	101, 123, 121, 314, 406
1:00 – 3:00	Display Removal	418, 416, 417 College
1:30 – 2:30	Commemorative Distribution and Silent Auctions (silent auctions close at 10:30 am Saturday at Show & Sale)	318
1:30 – 2:30	HAUL IN Show & Sale Items	National Guard Armory
3:00	Chapter Challenge Silent Auction Closes <i>40 project display removal</i>	Student Commons
3:15 – 5:30	Annual Business Meeting Special Commemorative Drawing! Chapter Commemorative Presentation, Display Winners announced.	314 College
5:00 – 6:30	CROCK HOP!!!!	Pottery Museum of Red Wing
6:30 – 8:00	Facebook Chapter Social	Pottery Annex Seniors Room
Saturday, July 8		
RED WING NATIONAL GUARD ARMORY SHOW & SALE		
7:30 – 9:00	HAUL IN Show & Sale	National Guard Armory 885 E 7th St, Red Wing, MN
7:00 – 3:00	Shuttle (pages 13)	Minnesota Correctional Facility
8:00 – 1:30	Concessions – Goodhue County Historical Society	Armory
7:30 – 10:30	Registration Opens	Lobby Armory
9:00 – 10:30	Commemorative Distribution - Silent Auction Closes at 10:30	Classroom Armory
9:30 – 11:00	Auction Prices-Realized Catalogs for Sale	Armory
9:00 – 10:30	Show & Sale Open to Registered Members ONLY	Armory
10:30 – 1:30	Show & Sale Open to the Public (page 14)	Armory
10:30 – 1:00	Commemorative Lottery (while supplies last)	Classroom Armory
1:30 – 3:00	Show and Sale Removal	Armory
5:30 p.m. Social 6:30 pm Dinner	Banquet Celebration	Mount Frontenac Golf Course 32420 Ski Rd, Frontenac, MN

1161 4th St S
Cannon Falls, MN
507-263-0352

COUNTRY SIDE Antique Mall

OPEN DAILY
Mon-Sat 9:30-5:30
Sun. 11-5:30

Located midway between Rochester and the Twin Cities off Hwy 52 at the south end of Cannon Falls. Take exit 96 (Co Rd 24 Blvd) or Hwy 19 exit and travel E. to 4th St So.



Extended hours
are 9am-7pm
for the Pottery Convention
Thursday - Friday -
Saturday

We have 1000's of Red Wing Pottery items!



Stop in and check out our 12,000 sq feet of antique shopping for all budgets

00159631271



RED WING STONEWARE CO.

Shop Our
Tent Sale

2017 Ornament and Collectible
will be available

Open: 9-5 Mon-Sat • 10-4 Sun
Weekday Factory Tours 1PM

4909 Moundview Drive Red Wing
(651) 388-4610



0015940781

40th Anniversary

Forty years ago, July 9, 1977 a group of people gathered together on a bluff high above the Mississippi River in Red Wing, MN. There was no complicated itinerary. The common thread that brought them together on the grounds at the Goodhue County Museum, was their passion for Red Wing clay products. Crocks, jugs, art pottery, dinnerware - it was all there to share with others. They told their stories about their favorite pieces of Red Wing clay and began getting acquainted and decided to name their group the Red Wing Collectors Society.

This July 6-8 the Collectors meet once again to celebrate the 40th Anniversary of the Red Wing Collectors Society at their annual convention. Many special activities are planned for the convention as it returns to the Minnesota State College Southeast (formerly the Red Wing Area Vo-Tech) on Thursday morning. The theme for this year's event is "Back to the Future," in recognition of returning to the former venue and as the Society looks forward to continuing into the future. An anniversary tile was designed and produced for members to purchase to

commemorate the milestone. Special anniversary pins will be given to members attending the 2017 convention. Educational sessions will also be held at the College and the members' auction and show and sale will take place at the Red Wing Armory.

The opening session will include a special Keynote Address presented by RWCS Collectors representing each decade. They will share personal stories about how they started collecting and interesting experiences along the way. RWCS Charter members will be honored and a fun party will follow at noon in the commons area.

Friday evening there will be a Back to the Future Crock Hop at the Pottery Museum of Red Wing where members can gather to socialize and enjoy root beer floats served in special souvenir cups along with sliders. There will be a "Back in Time" scavenger hunt in the Pottery Museum and a trivia contest relating to the 1985 "Back to the Future" movie. Members will also have the opportunity to have their photograph taken with Marty McFly and Doc Brown, characters from the movie.



The Salvation Army

501 Plum St., Red Wing • 651-388-9270

10% OFF

With this coupon

Clothing • Jewelry • Books • Dishes • Collectibles
Furniture • Linens Bedding • Holiday Merchandise
Reconditioned Beds, New Frames
Merchandise Changes Daily

Drop off
donations
East side
of building

Pickups on Tuesdays & Fridays
Store Hours: Mon.-Fri. 9-6, Sat. 9-5
www.thesalarmy.org

001590221



GREAT CHICKEN

- BURGERS & FRIES
- SANDWICHES
- WRAPS
- SALAD BAR
- FISH TACOS
- CONES
- SHAKES • MALTS



BREAKFAST SPECIAL

2 eggs, 2 bacon strips
and 2 pancakes

Breakfast Burritos
Omelets
French Toast
Biscuits and Gravy
Pancakes
Much more!

A Proud Sponsor of the Potter's Convention

Randys

Hwy. 61, Downtown Red Wing • 7AM-9PM Mon.-Sun.
See full menu online at randysinredwing.com

001593181

Thank you to our many RWCS volunteers who make the Convention successful every year:



First Name	City, State	# of years	First Name	City, State	# of years	First Name	City, State	# of years
AUCTION						REGISTRATION		
Nancy Houghton	Red Wing, MN	34	Gilda Becker	Sheboygan, WI	4	Sue Ingwersen	Indianapolis, IN	16
Richard Houghton	Red Wing, MN	34	Greg Erickson	Sioux Falls, SD	1	Leona Scherer	Schroeder, MN	11
Todd Houghton	Red Wing, MN	29	DISPLAY			Heidi Hahlen	Middleton, WI	8
Larry Seehusen	Pomeroy, IA	18	Laura Beall	Scotland, SD	16	Barbe Fisher-Schweppe	Lincoln, NE	8
Mike Robinson	Stockton, CA	17	Tyler Green	Sioux Falls, SD	4	Darrell Schweppe	Lincoln, NE	2
Steve Brown	Red Wing, MN	15	Gaylord Helmbrecht	Sioux Falls, SD	1	Angela Sheveland	Red Wing, MN	3
Bonnie Myers	Winona, MN	15	Loretta Helmbrecht	Sioux Falls, SD	1	Judy Richardson	Eau Claire, WI	4
Nick Marson	Winona, MN	15	Kristine Green	Sioux Falls, SD	1	SHOW & SALE		
Luke Wegner	Red Wing, MN	12	EDUCATION			Dave Kuffel	Libertyville, IL	26
Bruce Selfridge	Healdsburg, CA	12	Larry Peterson	Farmington, MN	40	Pete May	Greenville, TN	18
Brian Sander	Red Wing, MN	10	Phyllis Showers	Welsh, MN	40	Cindy May	Greenville, TN	18
Jacob Becker	Hagar City, WI	9	Steve Showers	Welsh, MN	40	Tim Lockard	Russell, IA	17
Mike Becker	Hagar City, WI	9	Larry Roschen	Coon Rapids, MN	19	Roxie Lockard	Russell, IA	17
Syl Caspersen	Sioux Falls, SD	9	Terry Moe	Cedar Rapids, IA	18	Doug Perkins	Aneta, ND	6
Steve Poeschal	Alden, MN	9	Laura Beall	Scotland, SD	16	Bill Harned	Salt Lake City, UT	6
Bob Beres	Merrimac, WI	9	Glenn Beall	Scotland, SD	16	Mark Gambucci	Farmington, MN	5
Scott Hardman	Ripon, CA	8	Catherine Beall	Logan, IA	8	Dale Erickson	Northfield, MN	5
Johnathan Braasch	Rochester, MN	8	Paul Boudin	Minneapolis, MN	7	Monna Erickson	Northfield, MN	5
Larry Birks	Harrisonville, MO	6	Connie Mathison	Minneapolis, MN	7	Robin Gambucci	Farmington, MN	5
Genise Hardman	Ripon, CA	6	Mark Wiseman	Des Moines, IA	5	Merv Peck	Fremont, NE	3
Thomas Sellner	Plattsmouth, NE	5	Fred Johnson	Cottage Grove, MN	4	Gail Peck	Fremont, NE	3
Shirley Seehusen	Pomeroy, IA	4	Doug Ernst	Crystal, MN	3	CONVENTION & OFFICE SUPPORT		
Angela Sheveland	Red Wing, MN	2	Michelle Weisen	Red Wing, MN	3	Luke Wegner	Red Wing, MN	11
Douglas Urman	Tucson, AZ	2	Marv Juel	Plainfield, IL	2	Rick Natynski	Pewaukee, WI	11
Stuart Weinbrenner	Cedar Rapids, IA	2	Jin Crimando	Pottery Museum	1	Todd Avery	Red Wing, MN	10
COMMEMORATIVE			YOUTH PROGRAMS			Paul Wichert	Waukesha, WI	7
Gary Grabau	Lynd, MN	30	Beth Zamzow	Superior, WI	16	Heidi Hahlen	Middleton, WI	7
Darrel Morrissey	Moose Lake, MN	29	Sue Ingwersen	Indianapolis, IN	16	Vivian Perry	Lees Summit, MO	6
Joanne Morrissey	Moose Lake, MN	29	Mike Robinson	Stockton, CA	15	Bob Perry	Lees Summit, MO	6
Greta Hoerman	Wauconda, IL	29	Russa Robinson	Stockton, CA	15	Richard Natynski	Pewaukee, WI	5
Kirk Hoerman	Wauconda, IL	29	Michelle Heiberger	Dell Rapids, SD	12	Russa Robinson	Stockton, CA	4
Larry Roschen	Coon Rapids MN	27	Leslie Zamzow	Superior, WI	10	Judy Richardson	Eau Claire, WI	3
Kathy Roschen	Coon Rapids MN	27	Frank Sheldon	Stockton, CA	5	WEBSITE EXPERTS		
Deanna Juergens	Bloomington, MN	25	Richard Spiller	Alma, WI	5	Al Kohlman	Madison, WI	16
Jay Juergens	Bloomington, MN	25	Sam Edge	Stewartville, MN	4	Larry Roschen	Coon Rapids, MN	16
Mary Plant	Fridley, MN	25	Anna Osterndorf	Red Wing, MN	3	Terry Moe	Cedar Rapids, IA	16
Frank Plant	Fridley, MN	25	Bonnie Klatt	Lake Elmo, MN	2	Laura Beall	Sioux Falls, SD	16
Jane Wolfram	Rushford, MN	25	Yoshi Hoffman	Wausau, WI	2	Cliff Olson	Dodgeville, WI	1
Mary Wolfram	Red Wing, MN	24	Joan Brinkman	Eden Prairie, MN	1	40TH ANNIVERSARY COMMITTEE		
Paul Wichert	Waukesha, WI	24	Deanna Juergens	Bloomington, MN	1	Nancy Lambert	Bella Vista, AR	10
Gordon Trelstad	Red Wing, MN	23	Veronica Wilson	Chisago City, MN	1	Wayne Lambert	Bella Vista, AR	10
Bonnie Myers	Winona, MN	15	David Nichols	Pottery Museum	1	Marty Voth	Red Wing, MN	6
Nick Marson	Winona, MN	15	*All the parents, grandparents, and guardians that stay with their children.			Althea Voth	Red Wing, MN	6
Diana Bailey	Cederburg, WI	15	PRE-REGISTRATION			Larry Birks	Harrisonville, MO	6
Ginger Garry	Woodbury, MN	14	Chuck Hanson	Rochester, MN	28	Linda Birks	Harrisonville, MO	6
Syl Caspersen	Sioux Falls, SD	13	Donna Hanson	Rochester, MN	28	Jim Williams	Overland Park, KS	5
Bob Morawski	New Berlin, WI	13	Jim Key	Red Wing, MN	22	Marilynn Williams	Overland Park, KS	5
Tom Scherer	Schroeder, MN	10	Karen Key	Red Wing, MN	22	John Hey	Olathe, KS	5
Dick Werning	Waukesha, WI	8	Jo Buck	Goodhue, MN	15	Bennie Hey	Olathe, KS	5
Leona Scherer	Schroeder, MN	11	Diane Quist	Osceola, WI	15	Cecelia LeCluyse	Lee's Summit, MO	1
Mike Becker	Hagar City, WI	9	Dennis Stoeckman	Olivia, MN	14	Joyce Rice	Libory, NE	1
Wayne Johnson	Eden Prairie, MN	7	Karen Stoeckman	Olivia, MN	14	Marian Cape	Collinsville, OK	1
Paige Grabau	Lynd, MN	6	Marian Fitschen	Red Wing, MN	13			
Steve Wichert	Oshkosh, WI	5	Ralph Ryan	Red Wing, MN	9			
Nikki Prouty	Oshkosh, WI	5	Ave Zibble	Red Wing, MN	8			
John Weber	Olathe, KS	5	Margaret Ekdahl	Red Wing, MN	6			
Sherry Weber	Olathe, KS	5						
Beverly Johnson	New Ulm MN	4						
Dennis Johnson	New Ulm MN	4						

All the members who volunteer all year long, and help onsite at Convention & MidWinter. The support is appreciated.

Thank you to Red Wing Area businesses for your sponsorships and donations

Crock Hunt Sites

Backwoods Framing & Engraving
 Red Wing Framing and Fine Art Printing
 Liberty's Restaurant and Lounge
 Red Wing Brewery
 Associated Bank, N.A.
 St. James Hotel
 Perkins Restaurant & Bakery
 Goodhue County Historical Society
 Red Wing Confectionery
 Hanisch Bakery & Coffee Shop
 Marie's Underground Grill & Tap House
 Simple Abundance

See back, page
to participate

Convention Sponsors



Associated Bank

larry's jugs
ANTIQUES



Gold Sponsors

Red Wing Shoes
 Rodeway Inn

Nichols Inn
 AmericInn

Crock Hop



Associated Bank



First Farmers & Merchants
 Hallstrom's Florist & Greenhouses

Silver Sponsors

Vogel & Gorman PLC
 Sturdiwheat
 Red Wing Shoe Store
 Alliance Bank
 Treasure Island Resort and Casino

Supporters

Bayside Tap & Steakhouse
 Bev's Café
 Corner Medical
 Cut Above Home
 Falconer Vineyard
 Ferrin Furniture Co.
 Fiesta Cancun
 Josephson's Clothing Store
 Kelly's Tap House & Grill

Mount Frontenac Golf Course
 Pottery Place Antiques
 Red Wing Confectionery
 Third Floor Antiques
 Uffda Shop
 West End Liquor
 Whimsy's Closet
 Wiederholt's Supper Club

New Members welcome to join during Convention. Come to the College.

Membership Application Form

Join Online Today To Get 2017 Commemorative

A Primary \$35 annual membership is afforded all the rights and privileges of the organization. An Associate \$15 annual membership is afforded all the rights and privileges of the organization except for the receipt of the newsletter. There **must be at least one Primary membership per household address** in order to have other members at that address having Associate member status. Each membership is afforded the right to purchase one Convention commemorative.

Please indicate if your membership is:

- New Membership
 Renewal

Type of membership:

- Primary annual membership fee \$35
 Associate annual membership fee \$15

Name _____

Address _____

City _____ State _____ Zip _____

E-mail Address _____

MEMBER and/or Chapter who interested you in joining: _____

Send Check, money order, or
 credit card info to:

Red Wing Collectors Society
 P.O. Box 50
 Red Wing, MN 55066-0050

Call 800-977-7927 | Online: www.ERWSC.org | E-mail: director@redwingcollectors.org

GOODHUE COUNTY HISTORICAL SOCIETY
 EST. 1869

Minnesota's First County Historical Society

1166 Oak Street | Red Wing, MN | (651) 388-6024
www.GoodhueCountyHistory.org

EDUCATION - Thursday & Friday, July 6 & 7

Keynote

Title: RWCS Collectors Through the Decades

Speaker: Panel

Thursday: July 6, 10:30 a.m.

Session Description:

The history of the Red Wing Collectors Society will come alive with a very special 40th Anniversary Keynote Address Thursday, July 6, at 10:30 a.m. A group of RWCS collectors representing the past 40 years have been assembled. They will present insight into their passion for collecting and fond memories as member of the Society. The panel will begin with the late 1970s when the Society was formed and members from each of the four decades since its founding will share personal experiences and an abundance of historical information. See page 4 for panel members biographies.

Chapter Meetings

Thursday: July 6

1:00 p.m. to 2:00 p.m.

LOCATION

Badger Chapter	215
Gopher Chapter	123
Iowa Chapter	121
Siouxland Chapter	406
Trails West Chapter	101
Wisconsin Chapter	314

FRIDAY, JULY 7 EDUCATIONAL SEMINARS

The Journey of Collecting Red Wing

Speaker: Larry Peterson

Session 1: 10:00 a.m. to 10:50 a.m.

Session Description:

Larry Peterson has identified over ten stages of collecting Red Wing. He will help to identify where you are right now and give you ideas for how to move purposely forward. He will share many new ways to enhance your collecting experience, and how to have more fun in your Red Wing adventure. Class participation will be encouraged.

Speaker Biography:

Larry Peterson, RWCS Charter Member and Hall of Fame member has been collecting Red Wing since 1970. Larry was asked to display some of his favorite pieces at the first convention. He has participated in every convention since. He has served as Education Chairperson, and President of the Cannon Valley Chapter. He has coauthored three books on Red Wing. Larry has always dreamed of creating a pottery museum. With Dave and Diane Hallstrom he started the Pottery Museum twenty years ago at Red Wing which became the new museum. He was project manager, overseeing the designing, coordinating the transfer to the current sight, and moving the Schleich museum to the city of Red Wing. He works hard every year with other volunteers to have a new display and many new items for you to enjoy. He is owner of Larry's Jugs Antiques. His passion is to promote the history, the collecting, and the investing in Red Wing stoneware and pottery by sharing, teaching, and having fun.

Is That Right?: Aftermarket Dinnerware and Art Pottery

Speaker: Laura Beall

Session 1: 10:00 a.m. to 10:50 a.m.

Session Description:

Did you know that after the Red Wing Potteries closed in 1967, many of the iconic molds were used by different potteries? Explore the differences in original and aftermarket dinnerware and art pottery and learn how to tell if the piece in front of you is "original" or "new". Discussion will include hands on examples of molds being used, produced, and copied from the 1970s to today.

Speaker Biography:

Laura Beall has been collecting Red Wing since the day she was born and could spot a piece of dinnerware before she started kindergarten. She began volunteering with the Red Wing Collectors Society in 2002 in the Display Room and was chair until 2016. She also collects original Red Wing molds and mold literature. Laura and her family operate a small pottery in South Dakota that occasionally uses original Red Wing molds to demonstrate the longevity of the molds' useful life.

Stoneware Fruit Jars

Speaker: Marv Juel

Session 3: 1:00 p.m. to 1:50 p.m.

Session 4: 2:00 p.m. to 2:50 p.m.

Session Description:

Marv Juel will discuss the unique history of the Stone Mason Fruit Jar. This presentation will include information on Robert Arthur's patent in 1855, the earliest recorded food preservation can/jar, George Scott's "wax sealer", and the time line to the Red Wing Stone Mason Fruit Jar.

Speaker Biographies:

Marv Juel was born in 1932 and raised in Nashua, Iowa. He graduated high school in 1950, he received his undergraduate

degree at LaCrosse State in LaCrosse, WI and his master degree from University of Minnesota. Marv was mathematics and basketball coach at Evergreen Park High School in Illinois retiring in 1987. He became interested in antique bottles in the 1970s and stoneware "would get in the way", but not anymore. Marv has been an RWCS member since 1979.

Privies and the Pottery Dump

Speaker: Steve and Phyllis Showers

Session 1: 10:00 a.m. to 10:50 a.m.

Session Description:

Steve and Phyllis Showers will share the interesting stories of digging history. They will explain how to find outhouse (privies) and share the finds. In addition, they will share their Red Wing dump experiences as well. Come hear and see these great stories of finds and discoveries.

Speaker Biography:

"Red Wing Archeologist" Steve Showers has been a Red Wing pottery dump digger for over 50 years and is a RWCS Hall of Fame Member. He has been a speaker at every Convention since he joined the RWCS. Steve and his wife, Phyllis, are active members of the Gopher Chapter, Iowa Chapter, and Cannon Valley Red Wing Collectors Club. Steve and Phyllis are avid gardeners, using their Red Wing sewer pipe as planters, and shards as ground cover and stepping stones. They live in Welch, Minnesota.

Dump Finds

Speaker: Paul Boudin &

Connie Matthison

Session 2: 11:00 a.m. to 11:50 a.m.

Session Description:

Come and join us for some fun and informational discussions on our coolest digs from Pottery Road and the Red Wing

CONTINUED ON PAGE 10

Orientation for First Timers

Session: Title: Orientation for First Timers

Speaker: Catherine Beall

Thursday: July 6, 9:00 a.m. to 10:00 a.m.

Friday: July 7, 9:00 a.m. to 10:00 a.m.

Room
314

Session: Description:

The 2017 Convention is being held in TWO NEW LOCATIONS. If 2017 will be your first time attending the Convention, there is a lot to see and do! Start your first Convention experience out right by attending an Orientation Seminar led by longtime RWCS member Catherine Beall. Catherine will discuss all of the activities that are lined up and offer tips on making the most of your Convention experience.

Speaker Biography:

Hello all, my name is Catherine Beall. I have been involved in the Red Wing Convention for over ten years now. I have been speaking at the Convention for eight years now. My interest in Red Wing is the history and preservation of that history. The Charles E. Murphy prints are my particular area of interest. Hope to see you all there.

Shared Interest Groups

College Commons

Friday, July 7, 9:00 am - 10:00 am

Friday
Morning

Description:

Shared Interest Groups are moving to Friday morning. Come to the College early to meet up with other with your same collecting interest in the Minnesota State College Southeast Student CommonsTalk with other RWCS members that share your specific Red Wing collecting passion for Dinnerware, Stoneware, or Art Pottery. This is your time to network with other collectors and swap stories, ask questions and get connected with other RWCS members with your area of interest.

Tables will be marked for each major area of Red Wing pottery production, history, and future: Stoneware, Dinnerware, Art Pottery. **More groups may be created on site as requested.**

Bean Pots Kent Williamson
Rwscokent@juno.com

EDUCATION DAY continued from page 9

Dump. It has been another good year of digging. We have unearthed some neat and unusual pieces. Last but not least, due to my overflowing shed, we will have a "few" shards to give away!

Speaker Biographies:

Paul and Connie joined the RWCS in 2007. After attending Steve Showers seminar that year, they were hooked on digging. They also go with Steve and Phyllis Showers around the area digging old bottle dumps. They have been collecting stoneware since the year 2000. Paul collects salt glaze, advertising, and has recently started collecting art pottery. Connie loves bowls, but does collect other RW pieces. They are members of the Gopher and Trails West Chapters. They attend MidWinter also.

Early Colfax Springs History and Stoneware

Speaker:, Mark C. Wiseman

Session 3: 1:00 p.m. to 1:50 p.m.

Session 4: 2:00 p.m. to 2:50 p.m.

Session Description:

Recent research, previously unknown details concerning the first Colfax Springs Hotel, The Old M.C. Springs Hotel. The research follows the involvement of L.E. Gray of Ottumwa, Iowa, and the other two original partners. L. E. Gray later founded

the Ottumwa Mineral Springs Hotel. Relating of Red Wing stoneware to the Hotels history, (I will have some new research items to add since Mid-Winter!)

Speaker Biography:

Mark Wiseman, Geologist, author of Iowa Stoneware histories for Moingona, Eldora, Des Moines, Boonesboro, Hartford, Palmyra, and Carlisle. Newsletter editor for the Iowa Antique Bottleers, avid digger and Historical researcher.

Divided Minnesota, Divided Goodhue County: the World War I Years

Speaker: Fred Johnson

Session 1: 10:00 a.m. to 10:50 a.m.

Session Description:

Although America seems divided today, those living in the World War I years of 1917-18, faced deeper problems. Nowhere were tensions greater than in Minnesota, then under dictatorial control of a temporary seven-man commission. Goodhue County served as a model of what went wrong. Arrests for treason, secret agents in every community, martial law and political kidnapping were just part of the picture. Fred Johnson's new book Patriot Hearts uses a fascinating supporting cast of radicals, spies, firebrand farmers, profiteers and provocateurs to tell

the complete story. Johnson will speak to these issues and take questions.

Speaker Biographies:

Red Wing native Frederick Johnson has to his credit twelve books about Minnesota history along with numerous magazine articles in respected journals including Minnesota History, Aviation History, Minnesota Genealogist and MNo-pedia, the Minnesota Historical Society's online encyclopedia. The American Association for State and Local History gave his 2008 book Richfield: Minnesota's Oldest Suburb a special award for exceptional scholarship. Johnson's The Big Water (Deep Haven Press, 2013) has been labeled the "definitive" history of Lake Minnetonka. Noted Minnesota historian William E. Lass, called Johnson's Goodhue County, Minnesota: A Narrative History "a model for other county historical societies."

19th Century Baseball History and Fun Facts

Speaker: Doug Ernst

Session 2: 11:00 a.m. to 11:50 a.m.

Session Description:

Baseball has a long and diverse history dating back centuries. This presentation will focus on "proto-ball games" and different versions of the early game and

on the two branches of the game and attempts to create interest internationally in the game that has become known as a uniquely American game. Baseball in art and culture will be considered as well.

Speaker Biographies:

Doug Ernst is a retired history teacher, historic interpreter, writer and speaker. He is a Minnesota native, having been born in the same hospital as former Twins Manager, Tom Kelly. He has played baseball by the rules of 1860 for almost 15 years. He is now Manager of the original 1860 base ball club in Minnesota, is a member of SABR and VBBA. He currently serves on the National board of the Vintage Base Ball Association (VBBA) as Secretary and Newsletter editor. He recently helped to host the National VBBA Conference which was held in Cooperstown, NY.

Ceramics Conservator

Speaker: Jin Crimando, Inventory Specialist, Pottery Museum of Red Wing

Session 3: 1:00 p.m. to 1:50 p.m.

Session 4: 2:00 p.m. to 2:50 p.m.

Session Description:

Inventory specialist Jin Crimando will give an in-depth discussion on her life growing up in Seoul, South Korea. Further, she will discuss her training and experi-

CONTINUED ON PAGE 11

Keynote & Educational Seminars July 6-7, 2017 Minnesota State College Southeast

KEYNOTE

Collectors Through the Decades

Room 314

Thursday, July 6

10:30 a.m.

ORIENTATION FOR FIRST TIMERS

Catherine Beall

Room 314

Thursday & Friday, July 6 & 7

9:00 a.m.

SHARED INTEREST GROUPS

Student Commons

Friday, July 7

9:00-10:00 a.m.

	101	123	121	314	406
Session I 10:00 to 10:50	The Journey of Collecting Red Wing Larry Peterson	Divided Minnesota, Di- vided Goodhue County: The World War I Years Fred Johnson GCHS	Privies and the Pottery Dump Steve & Phyllis Showers	Is That Right? Aftermarket Dinnerware & Art Pottery Laura Beall	
Session II 11:00 to 11:50		19th Century Baseball History & Fun Facts Doug Ernst GCHS	Dump Finds Paul Boudin Connie Mathison	Back to the Futura Larry Roschen Terry Moe	Red Wing Cinema Eva Zeisel
Session III 1:00 to 1:50	Stoneware Fruit Jars Marv Juel	Cermics Conservator Jin Crimando	Early Colfax Springs History & Stoneware Mark Wiseman	Dinnerware Odds & Ends, Mid 1950s to Mid 1960s Larry Roschen Terry Moe	Red Wing Cinema Eva Zeisel
Session IV 2:00 to 2:50	Stoneware Fruit Jars Marv Juel	Cermics Conservator Jin Crimando	Early Colfax Springs History & Stoneware Mark Wiseman		

EDUCATION DAY continued from page 10

ence repairing and conservation pottery from around the world and her work in the Pottery Museum. She will give an overview of practices for pottery conservation as well as some of the materials and tools used.

Speaker Biographies:

Jin Crimando was born and raised in Seoul which is one of the biggest cities in the world. She joined the Pottery Museum of Red Wing as the Inventory Specialist this past February. Jin was professionally trained in England with skills as an art conservator and ceramic restoration specialist. Her interests range mainly in European and Asian pottery, porcelain, figurine, crystal and glass based antiquities. Additionally, she has experiences in both lab and field archaeological projects for almost 10 years in South Korea and England. She currently lives in Saint Paul with her new husband.

Back to the Futura

Session 2: 11:00 a.m. to 11:50 a.m.

Dinnerware Odds & Ends, Mid 1950s to Mid 1960s

Session 3: 1:00 p.m. to 1:50 p.m.

Speakers: Terry Moe and Larry Roschen

Session Description: Back to the Futura

The Futura dinnerware line fits perfectly into this year's convention theme. This session will review the ten patterns produced in the Futura shape.

Session Description: Dinnerware Odds & Ends, Mid 1950s to Mid 1960s

This session will review dinnerware items that aren't part of the large dinnerware lines. Topics will include Kermis, Spruce, White & Turquoise, Clown, Buffet Sets, Bake & Serve 1963, Novelties, and certain pieces that look like they should be dinnerware, but were called art pottery by Red Wing.

Speaker Biographies:

Terry Moe and his wife Marilyn have been collecting Red Wing pottery since they inherited a partial set of Gypsy Trail Plain and Reed in 1975 from Terry's Grandmother. They primarily collect dinnerware. Gypsy Trail, Wreath, Ivanhoe, Nassau, Ardennes, Hotel or Restaurant, and Normandy along with Merrileaf have been their main focus. Primary source materials allowing them to document dinnerware have become a major interest.

Larry Roschen and his wife Kathy have collected all forms of Red Wing pottery since 1980. Red Wing pitchers, teapots, and salt & pepper shakers are primary collecting interests along with building complete sets of several dinnerware patterns. Larry and Kathy have been active members of the Gopher Chapter since 1980, where he currently serves as secretary. Larry's interests eventually turned from growing the collection to learning more about the Red Wing dinnerware lines through research of vintage documents. Larry currently serves as the dinnerware advisor for the "Ask the Experts" section of the RWCS website and as secretary of the Red Wing Collectors Society Foundation board of directors.

Larry and Terry have conducted numerous dinnerware seminars for RWCS Mid-winter and Summer Conventions since 2003.

Red Wing Cinema: Eva Zeisel

Session 2: 11:00 a.m. to 11:50 a.m.

Session 3: 1:00 p.m. to 1:50 p.m.

Session Description:

Did you know that Eva Zeisel, creator of Red Wing's Town & Country dinnerware line, was the keynote speaker at the 2000 Convention when she was 93? Come and hear her original presentation from that convention. During her presentation she shares about her experiences here in Red Wing and unique life story.

KIDS VIEW – RWCS CONVENTION 2017 LEARNING ABOUT THE ANNIVERSARIES FRIDAY, JULY 7, 2017

TIME	ACTIVITIES
	REGISTRATION & INTRODUCTIONS
9:45 – 10:00	PLEASE ATTEND THIS SESSION FOR INSTRUCTIONS FOR BOTH PARENTS AND KIDS.
Room 500	LUNCH WILL BE PROVIDED FOR KIDS.
10:00 – 2:00	The 75th Anniversary of Red Wing Pottery Sam Edge and RWCS Facebook Chapter
LUNCH 11:30	Kids will learn all about Red Wing's 75 th Anniversary Art Pottery and Dinnerware through speaker Sam Edge and video created by Yoshi Hoffman of the RWCS Facebook Chapter.
	Clay is in the Air – Richard Spiller
	Kids will make their own creation inspired by the Art Pottery from Red Wing's 75 th Anniversary with air dry clay.
	Paint your Plate – Red Wing Art Reach
	Kids will create their own Red Wing dinnerware inspired by the Red Wing Pottery Anniversary Line Pieces.
	Upcycling Red Wing – Joan Brinkman, Deanna Juergens, & Sue Ingwersen
	Kids will create their personalized red wing bag and create a quilt square for a final sewing project. Other projects and activities for all ages.
	Kids View – Show & Sale
	Kids will learn the art of getting the deal from seasoned Collectors and make purchases using their Red Wing Bucks.
	Stoneware Jugs by Mike Robinson
	Kids will receive their annual Kids View collector piece.
	All projects will be taken home at the end of the day.

Young Collectors

Thursday, July 6
9:00 am to 12:30 pm
Leader Michelle Heiberger



The Young Collectors program will begin with a Hands on Pottery with Richard Spiller. Working with a form, participants will form their own pottery shape with air dry clay. Following the pottery class, participants will be transported to the Pottery Museum of Red Wing.

David Nichols, Curator, at the Pottery Museum of Red Wing, will share the grant funded archival project at the museum, his experience working in the field, and how to apply archival processes to managing a personal collection. Following the presentation, participants will have a first-hand experience

volunteering in the museum. A special mosaic project is planned in partnership with Red Wing ArtReach. Participants will return to the college around noon to join fellow collectors at the 40th Anniversary Party.

Timeline Detail:

9:00 Hands On with Richard Spiller
10:00 Depart for Museum using Hiawathaland Transit (local Red Wing Bus)
10:30 to 11:30 Museum
Noon return to college.



RWCS CHAPTER PRESIDENTS

BADGER CHAPTER

Bob Morawski, President
2130 S Ridgeway Dr
New Berlin WI 53146
262-853-8269
morawskib@yahoo.com

**CANNON VALLEY CHAPTER**

Wayne Miller, President
2669 COUNTRY CT
RED WING, MN 55066-4121
wjmillier@charter.net

**GOLDEN STATE CHAPTER**

Bruce Cameron, President
PO Box 690
French Camp, CA 95231
510-537-0325
ffr554@aol.com
goldenstateredwing.com

**GOPHER CHAPTER**

John Sagat, President
7241 Emerson Avenue S.
Richfield, MN 55423-3067
612-861-0066
thesagats@comcast.net

**ILLINOIS CHAPTER**

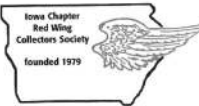
Vacant

INDIANA WINGERS CHAPTER

Cleo Dimmit, President
9658 N.1175 W
Monticello, IN 47950
574-965-2938
cdd9658@comcast.net

**IOWA CHAPTER**

Sandy Short
804 W Merle Hibbs Blvd
Marshalltown IA 50158
C: 605-261-5546
sandy@maidrite.com

**LEWIS & CLARK CHAPTER**

Doug Perkins, President
188 47TH ST NE
ANETA, ND 58212
701-326-4263
beehive@polarcomm.com

**NEBRASKA CHAPTER**

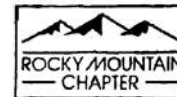
Louise Schleich, President
6412 Chesterfield Ct
Lincoln, NE 68510-236
402-489-6508
ldschleich@aol.com

**PUGET SOUND CHAPTER**

Wally Armstrong, President
24129 Old Owen Rd
Monroe, WA 98272-7681
360-794-7172
armst101@aol.com

**ROCKY MOUNTAIN CHAPTER**

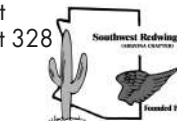
Rocky Mountain Chapter RWCS
P.O. Box 39
Wetmore, CO 81253
719-251-4120
Carolyn1697@gmail.com

**SIOUXLAND REDWINGERS**

Glenn Beall, President
29622 420TH AVE
Scotland, SD 57059
605-464-0516
gbeall@iowatelecom.net
siouxland.redwingcollectors.org

**SOUTHWEST REDWINGERS**

Kent Williamson, President
3104 East Broadway Rd Lot 328
Mesa, AZ 85205
rwscockent@juno.com
sw.redwingcollectors.org

**SUNSHINE STATE REDWINGERS**

Don Peterson, Vice President
2902 Limpkin Ln.
Kissimmee, FL 34746-2745
612-859-2101
djpeterston4476@gmail.com

**TRAILS WEST CHAPTER**

Debbie Mischke, President
25 White River Lane
Defiance, MO 63341
314-750-3665 (C)
bmischke@centurytel.net
trailswest.redwingcollectors.org

**WISCONSIN CHAPTER**

Pete Pavloski, President
1411 Rapids Trail
Nekoosa, WI 54457
715-325-3715
pbpav@hotmail.com

**WOLVERINE CHAPTER**

Ken Bahlman, President
44826 Malow Ave.
Sterling Heights, MI 48317
586-731-4628

**RWCS FACEBOOK CHAPTER**

Chris Tincher
1231 S City View Ct
Wichita KS 67235
316-708-5272
cctincher@gmail.com



Dave "Yoshi" Hoffman
2821 Lynx Rd
Wausau, WI 54401
715-355-8521
senorh63@charter.net

RWCS BOARD OF DIRECTORS / CONVENTION POSITIONS

President

PAUL WICHERT
W247S7000 SUGAR MAPLE DR
WAUKESHA, WI 53189
414-731-0218
redwingr@gmail.com
president@redwingcollectors.org

Vice President

MIKE STENSTROM
6204 SHAWNA ST
WESTON, WI 54476
715-218-8216
mike.stenstrom@gmail.com
vicepresident@redwingcollectors.org

Secretary

ANGELA SHEFVELAND
905 HAWTHORN ST.
RED WING, MN 55066
816-456-2524
Angela.shefveland@gmail.com
secretary@redwingcollectors.org

Treasurer

DAN BECK
2215 HILL PLACE SW
ROCHESTER, MN 55902
507-398-6358
bucksplacewi@gmail.com
treasurer@redwingcollectors.org

Historian

NANCY LAMBERT
17 NEWCASTLE LANE
BELLA VISTA, AR 72714
785-691-7213
nancy194805@gmail.com
historian@redwingcollectors.org

Auction Manager

SCOTT HARDMAN
430 N MANLEY RD
RIPON, CA 95366-3405
209-602-1461
sloheat@aol.com
auction@redwingcollectors.org

Education Manager

MICHELLE WEISEN
605 BLUFF ST
RED WING, MN 55066
507-254-2210
Email: mweise01@yahoo.com
education@redwingcollectors.org

Commemorative Manager

BOB MORAWSKI
2130 S. RIDGEWAY DR.
NEW BERLIN, WI 53146
262-853-8269
morawskib@yahoo.com
commemorative@redwingcollectors.org

Representatives At Large

Russa Robinson
1970 Bowman Rd
Stockton CA 95206-9654
209-471-4084
rrussa@aol.com
repatlarge@redwingcollectors.org

RICHARD A. NATYNSKI

N50 W25078 WILLIAM DR
PEWAUKEE, WI 53072
608-617-7424
rnatynski@frontier.com
repatlargeeast@redwingcollectors.org

Display

TYLER GREEN
SIOUX FALLS, SD 57105
display@redwingcollectors.org

Youth Programs

(Kids View & Young Collectors)
OPEN

Pre-Registration

JIM & KAREN KEY
Red Wing MN
winger.key@gmail.com
651-388-5806
Computer Registration

HEIDI HAHLEN

Middleton WI
608-827-0331
hshahlen@tds.net

Membership Committee Chair

CHRIS TINCHER
Wichita, KS
cctincher@gmail.com
316-708-5272

Technology Committee Chair

MIKE STENSTROM
WESTON, WI
mike.stenstrom@gmail.com
715-218-8216

Show & Sale

DALE ERICKSON
Northfield, MN
507-645-6771
TIM & ROXIE LOCKARD
Russel, IA
641-862-3239

Newsletter Editor

RICK NATYNSKI
PO Box 198
Pewaukee, WI 53077
Newsletter@redwingcollectors.org
414-416-9464

RWCS BUSINESS OFFICE

240 Harrison St Unit 3
Red Wing MN 55066
PO BOX 50
Red Wing MN 55066
Phone: 800-977-7927
Cell phone 651-388-4004
Fax: 651-388-4042

Stacy Wegner
Executive Director
swegner@redwingcollectors.org
director@redwingcollectors.org
ERWCS.ORG

2016 RWCS Convention Attendance By State:

MN... 523	PA..... 4
WI 230	WA 4
IA 87	KY..... 4
IL..... 44	OH 4
SD..... 41	TX 4
MO..... 26	AR 3
ND..... 23	TN 2
CA..... 22	MD 2
NE 17	LA 2
KS..... 16	UT..... 1
AZ 16	OR 1
CO 10	SC 1
IN..... 8	FL..... 1
MI..... 8	MA 1
OK..... 6	

TOTAL: 1113

SHUTTLE SERVICE AVAILABLE

Parking available at the
Minnesota Correctional Facility
1079 Hwy. 292
Up the road from Days Inn

Shuttle Service to Red Wing
National Guard Armory

AUCTION

Thursday, July 6
3 pm - ?

At close of Auction

SHOW & SALE

Saturday, July 8
7 am - 3 pm

WATCH FOR SIGNS

POTTERY MUSEUM OF RED WING

240 Harrison St., Red Wing • 651-327-2220

Learn the history of the Red Wing Clay Industries
Over 6,000 Items on Display



Purchase Tickets
Today at our Gift Store
**WINE-ING FOR
RED WING**
Wednesday, July 5
6-9pm
Live & Silent Auction 7pm
OPEN TO THE PUBLIC

FREE Admission to the
Museum
Tues-Sat 9-5
Sun 11-4

www.potterymuseumredwing.org



0015954091



Whole Foods for a
Healthy Lifestyle

•Organic •Bulk •Dry Goods
•Local Meats •Supplements
•Health & Beauty •Essential Oils

Fresh Organic Smoothies

\$3.50 (Reg. \$4.69)

Show your Attendee Badge for discount

OPEN MON.-SAT.

318 Bush Street, Red Wing, MN

651-388-0333

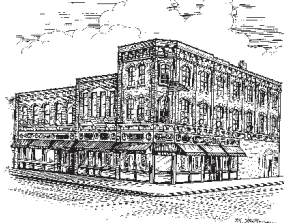
www.simpleabundanceredwing.com



Locally Owned for 17 Years

LIBERTY'S RESTAURANT & LOUNGE

Proud
Supporter
of the
Red Wing
Collectors
Society.



Decor of Red Wing Yesteryear

Welcome Collectors!

Open Daily 8 a.m.

**Serving Breakfast,
Lunch & Dinner**

Since 1975

Featuring Sandwiches, Pizza,
Steaks, Seafood, Mexican,
Italian and American Cuisine.

Online Menu
libertysrestaurant.com

Full Menu Delivery

651-388-8877

303 W. Third Street
Downtown Red Wing



Buy 1
**SHORT-SLEEVED
SPORT SHIRT**

2nd Shirt
50% OFF*

*Equal or Lesser Value



JOSEPHSON'S
ESTABLISHED 1878

215 Bush Street, Red Wing, MN

651-388-4261

Store Hours: Mon.-Sat. 9-5, Thurs. 'til 8 PM



**It's a Fire Cracker
of a Sale!**

Pick A Popper

**20%-40%
OFF**

your entire purchase

Now thru July 9

In-store rules apply

Downtown Red Wing
207 Bush St.
651-388-8275

**OPEN TO THE PUBLIC
FREE ADMISSION**

STONEWARE & POTTERY SALE

Red Wing National Guard Armory

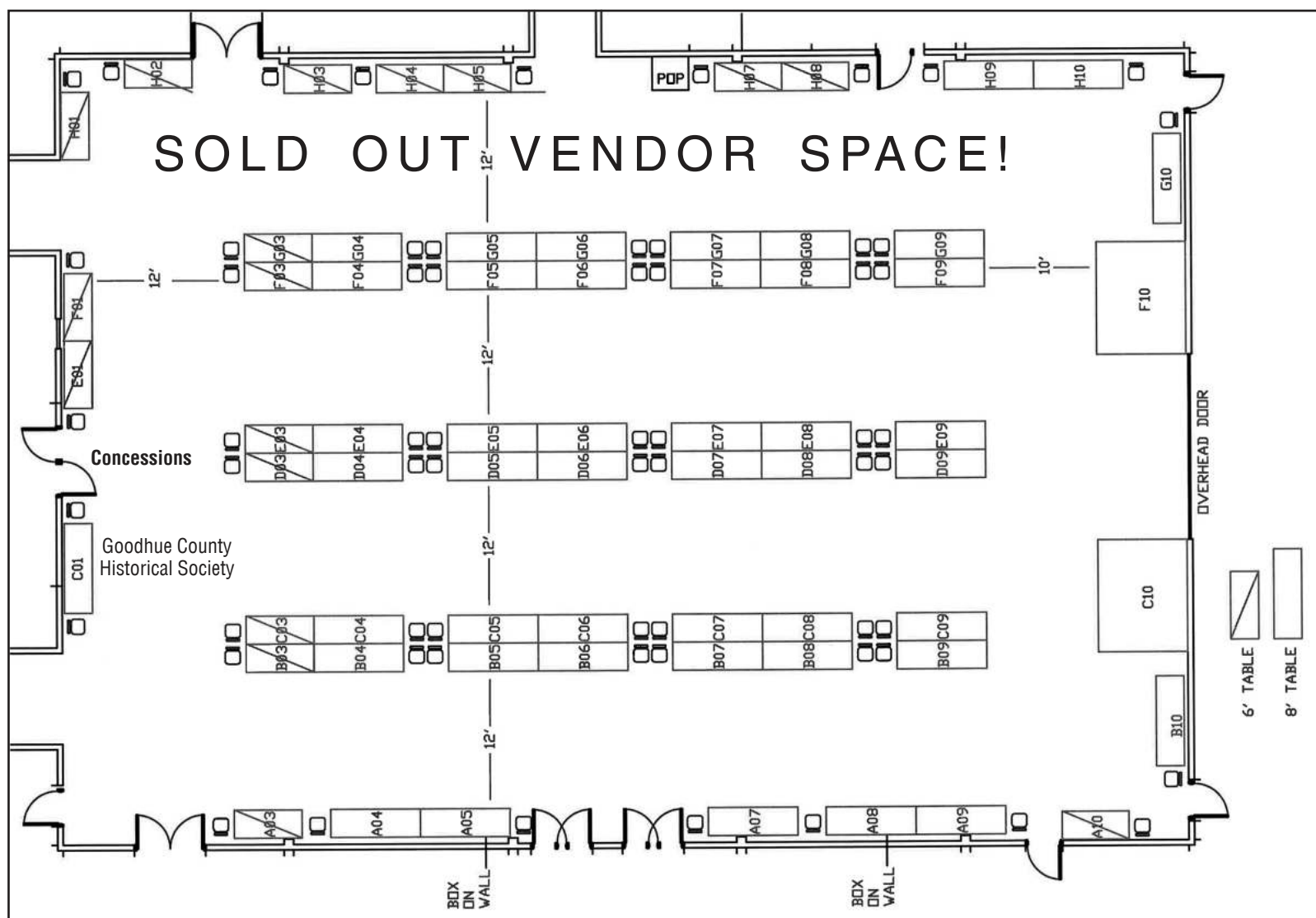
885 E. 7th Street

SAT., JULY 8, 2017

10:30 am - 1:30 pm

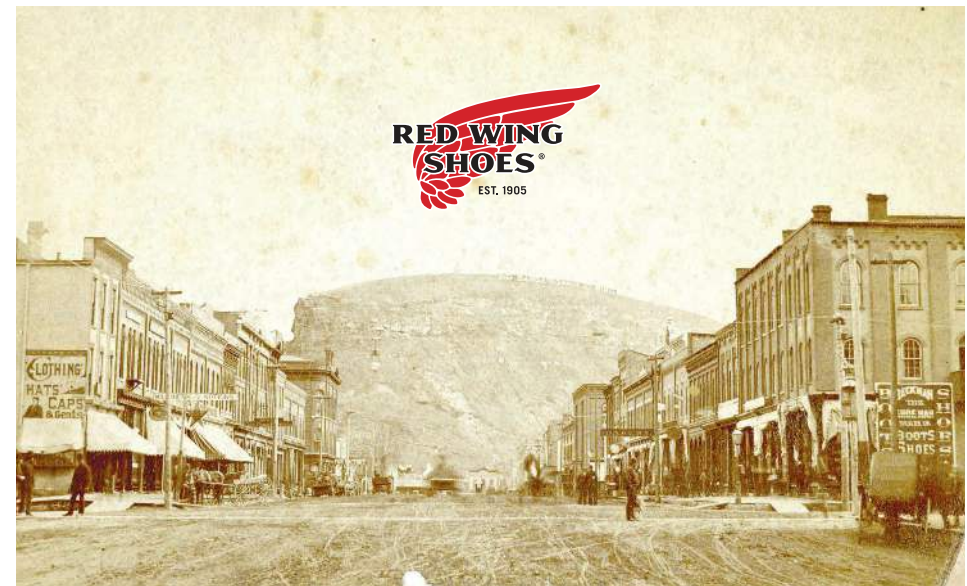
Registered Members 9:00 am

FREE PARKING



Parking Shuttle 7:00-3:00 Minnesota Correctional Facility • Watch for Signs (see page 13)

SELLER	BOOTH	SELLER	BOOTH
REISS, RAY	A 03	TUCKER, ANN	E 05 06
KEDING, MONICA.....	A 04-05	NORINE, JAMES	E 07-08
PECK, GAIL L.....	A 07-08-09	WISBAR, GARY	E 09
BARTLEWSKI, TOM.....	A 10	BERMAN, LYLE.....	F 03
OLSON, CLIFF	B 03	HELMBRECHT, GAYLORD.....	F 04
WIPPERLING, STEVE	B 04	NELSON, COLLEEN.....	F 05
PERKINS, DOUG/HARNED,		EBERTOWSKI, MARK	F 06
BILL	B 05-06	DECKER, DENNY.....	F 07-08
FROLEK, ALAN	B 07	LEITHEISER, RON	F 09
CHRISTENSEN, JACK.....	B 08-09	LACOSSE, LORI	F 10
MILLER, WAYNE	B 10	GAMBUCCI, MARK	G 03
BISLAND, WILLIAM.....	C 03	ERICKSON, DALE	G 04-05
TEFFT, GARY	C 04-05-06	WEINKAUF, GARY.....	G 06
WILLIAMSON, KENT.....	C 07	ROBINSON, MIKE	G 07
ROBERTS-KNUTZEN, BETTY J	C 08	ROBINSON, RUSSA	G 08
LINDNER, ROSEANN.....	C 09	JUERGENS, JAY	G 09
LOCKARD, ROXANNE	C 10	NYBERG, CURT	G 10
SEXTER, ROGER	D 03-04-05-06	SHOWERS, STEVE	H 01-02
TAGLIAPIETRA, JEFF.....	D 07	KELSO, MIKE.....	H 03-04-05
FLOYD, JEFF	D 08	BOUGIE, STAN	H 07-08
OSTERHOLZ, LORRAINE.....	D 09	PETERSON, LARRY.....	H 09-10
RICHARDSON, JUDITH.....	E 03	RWCS FOUNDATION.....	E01-F01
LUCKE, PAT	E 04		



**PROUD TO CALL
RED WING OUR HOME**

REDWINGSHOES.COM

RETIREMENT *Sale*

Entire Stock at least 30% -40% OFF
MOST ITEMS 50% OFF!

Everything must go including storage and display items!
 More antiques and collectables from storage will be added
 as room permits.

AL'S ANTIQUE MALL
 512 Plum St., Red Wing, MN 55066
 651-388-0572
 Hours: Mon-Sat: 9am to 5pm * Sun: 10am to 5pm

AL'S ANTIQUES STONEWARE

NO RESERVE ONLINE ONLY AUCTION

Starts Ending Thurs., July 6 @ 6:30pm

Over 1000 Pieces!

Sale located @ Al's Antiques-512 Plum St-Red Wing, MN 55066
 Viewable During Store Hours: Mon-Sat 9am-5pm & Sun 10am-5pm

Hines Auction Service
HinesAuctionService.com
 Everything Sold As Is Terms: Cash, Check or Credit Card
 MN 6.875% Sales Tax & 10% Buyer's Fee Applies
 (4% Additional courtesy fee on card transactions)
 REGISTERED MN AUCTIONEERS: JEFF HINES #19-186
 218 NORTH BROADWAY ELLSWORTH, WI 54011 - OFFICE: (715) 273-3377 - ONLINE: (715) 273-0026

Join the Convention fun and win Membership and the 2017 Commemorative!



CROCK HUNT

July 1-8, 2017

RULES: The Crock Hunt begins on Saturday, July 1. Both Red Wing Collectors Society Members and non-members are eligible to participate in the 2017 RWCS Convention Crock Hunt. Participants must locate each display pictured site during regular business hours to match the business logo and photo. Participants must obtain an employee initials (or other mark chosen by the site) from each site. Winners drawn will have their forms checked to ensure that answers are correct before a prize is awarded. Winners do not need to be present to win.

Completed forms must be brought to the Convention Show and Sale, Saturday, July 8 between 10:30 a.m. and 1:30 p.m. at the Red Wing National Guard Armory.

Participating businesses feature at least one piece of old or new Red Wing pottery in their picture. The business logo is not included in the picture. Both the photo and business logo are printed at random on the Crock Hunt form published in the Convention Supplement, for download at ERWCS.org or at selected site locations.

EVERYONE INVITED TO PARTICIPATE
Bring your form to the National Guard Armory Saturday during the Show & Sale!



Are you a member? Yes No

Name: _____

Address: _____

Phone: _____

Email: _____

Visit as many locations as you can. Bring your form to the Show & Sale between 10:30 a.m. to 1:30 p.m. on Saturday, July 8, to be included for drawing(s).



Hanisch Bakery
Picture # _____



Backwoods Framing
Picture # _____



Perkins
Picture # _____

812 Withers Harbor Dr.



Liberty's Restaurant
Picture # _____

303 West 3rd St.



Red Wing Brewery
Picture # _____

1411 Old West Main St.



Associated Bank
Picture # _____

222 Bush St.



Goodhue County
History Center
Picture # _____

1166 Oak St.



Red Wing Confectionery
Picture # _____

323 Main St.



318 Bush St.

Simple Abundance
Picture # _____



ST. JAMES HOTEL
EST. 1875
406 Main St.

St. James Hotel
Picture # _____



217 Plum St.

Marie's Underground
Grill & Tap House
Picture # _____



312 West Avenue

Red Wing Framing & Printing
Picture # _____