

30 years of reMEMBERing
Great Clay...
Great People!

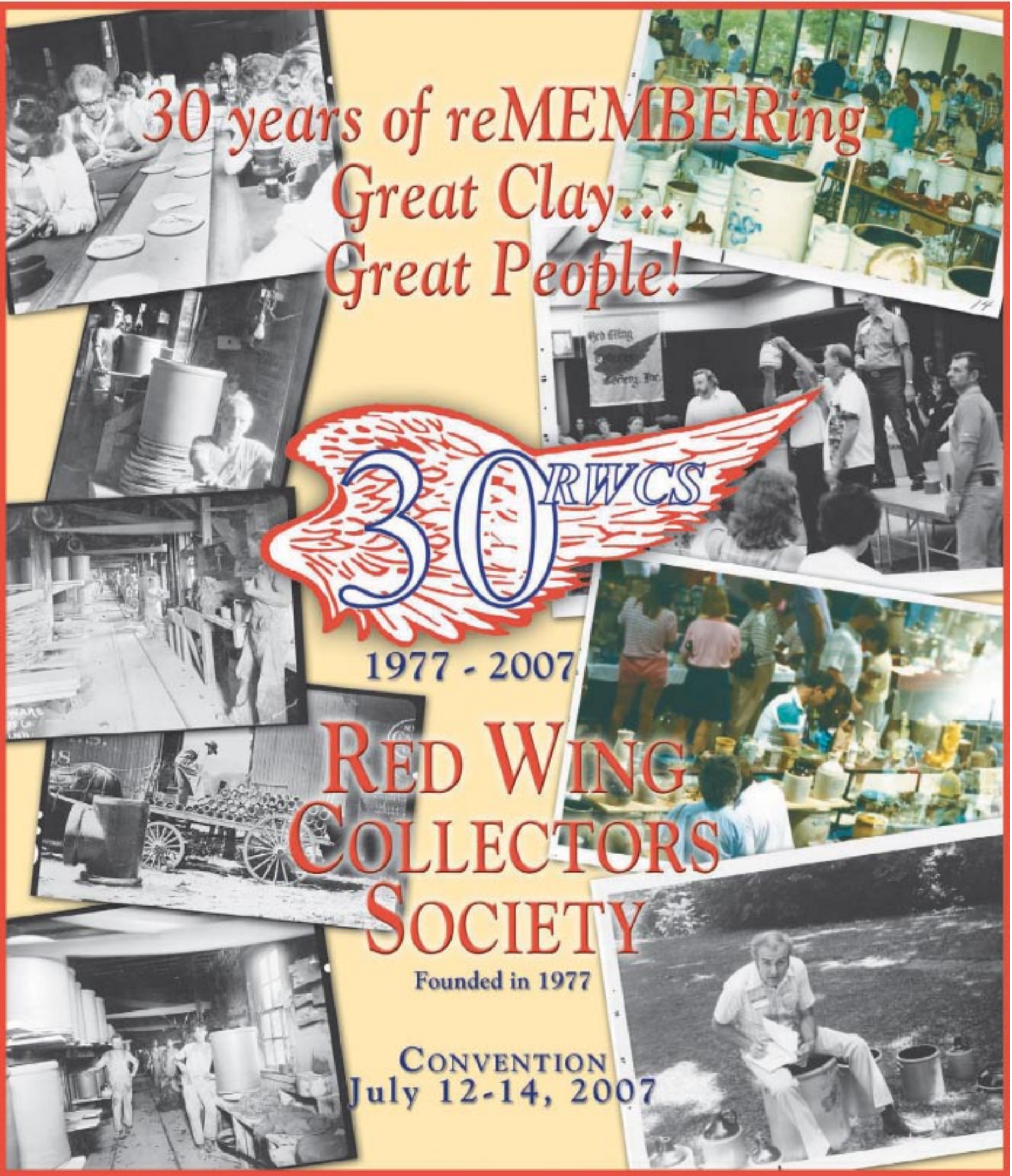


1977 - 2007

RED WING
COLLECTORS
SOCIETY

Founded in 1977

CONVENTION
July 12-14, 2007



Welcome from the President

Welcome to the Red Wing Collectors Society's 30th Anniversary Celebration. It is a special year as this is also the 150th anniversary of the city of Red Wing. The two special events will provide everyone with plenty of opportunities to have extra fun during the time you are in Red Wing.

I want to extend a very special welcome to the Charter Members who are attending this year's Convention. You had the vision in 1977 of how this organization could be and put the framework in place that is still the basis for how we operate today. Thank you.

Enjoy your time in Red Wing. There is surely plenty of things for you to do both at the Convention, in town and around the area. Most of all have fun and come back next year!



Photo courtesy Rick Knapinski

Sue Jones Tagliapietra,
President RWCS

Welcome from the Mayor

Greetings and Welcome to Red Wing!

On behalf of the City of Red Wing, I want to welcome you to the 30th Anniversary Celebration of the Red Wing Collectors Society. Not only is this a special year for the Convention, but Red Wing is celebrating it's Sesquicentennial (150 years).

Pottery has been such a large part of Red Wing's history, that it is only fitting we make this year an even more fun, memorable and exciting occasion.

I invite you to enjoy the Convention, meet new and old friends, explore our beautiful city, and take home more wonderful memories.

Have a great time!

Donna Dummer, Mayor

City of Red Wing, MN



Donna Dummer, Mayor

On the cover...

Vintage photographs and snapshots from conventions give faces to some of the people who made the clay industry a success in Red Wing, as well as a few of the thousands who have a passion for collecting Red Wing. The collage of images reflects the theme of the 2007

Red Wing Collectors Society Convention: 30 Years of reMEMBERing Great Clay... Great People.

Inside this special section are several stories of special interest not only to collectors, but to anyone who prizes history, along with Convention information.

A Special Convention Supplement produced by the Republican Eagle in partnership with the Red Wing Collectors Society Inc.

Falconer Vineyards Winery

Welcomes the
**Red Wing
Collectors Society**

Try our new LaCrescent and
Prairie Star Wines!

Bring a picnic lunch and enjoy the
scenic vineyard in one of Red Wing's
pictureque valleys.

**Fridays 12 - 5 p.m.
Saturdays 10 a.m. - 6 p.m.
Sundays 12 - 5 p.m.**

**Collectors Week
Open Thurs. - Sun.
651-388-8849**

Wine tasting \$4.00 per person
Falconer Vineyards Winery
3572 Old Tyler Rd., Red Wing, MN 55066
651-388-8849 Wine@FalconerVineyards.com
www.FalconerVineyards.com



Welcome from the History Center



The Goodhue County History Center is located at 1166 Oak St., Red Wing.

The Goodhue County Historical Society is happy and pleased to welcome the Red Wing Collectors' Society and its chapters to Red Wing for its 30th Anniversary Convention. We look forward to renewing the friendships that we have made and anticipate visiting with a number of you at the history center as well as the at the Convention.

This year's Convention should be a wonderful opportunity to reflect on the past thirty years and to brainstorm about the future of the Society. Celebrating this great milestone during Red Wing's sesquicentennial year can only add to the "special-ness" of your

achievement in not only lasting for three decades, but in thriving throughout that time.

Conventions are unique opportunities to meet new people and new things, as well as a chance to renew friendships. your Convention is a splendid chance to learn about Red Wing's history, Red Wing pottery and to indulge your enthusiasm for collecting. I hope that all of you enjoy this year's Convention and your time here. My staff and I will look forward to greeting you at the History Center.

Char Henn
Director/CEO, Goodhue County
Historical Society

Welcome from the Business & Convention Manager

Happy 30th Anniversary RWCS Members and WELCOME to the 31st Annual Convention. Thank you for joining us here in Red Wing!

As all of you know last year was my first Convention and I had the opportunity to meet and work with so many members. This year will be my daughter, Flora's first Convention. I know that all of you are very excited to meet her and I know she will be happy to see all of you.

As we gather together in Red Wing to celebrate and reMEMBER 30 years of Society history the City of Red Wing is celebrating its sesquicentennial this year. As you get together as friends, chapters and collectors, remember those Convention gone by, share your

stories with new members and each other. The 30th Anniversary Committee has worked very hard to keep the theme of 30 years of reMEMBERing Great Clay... Great People. Like every year I am sure that most of you have already started your Convention experience by attending the Outdoor Antique Show in downtown Red Wing earlier in the week and the numerous evening auctions, and stopping at street vendors and driveway sales to get your memories coming back.

This year Convention registration was available online to members and on site registrations will be processed online as well and you can pay using your credit card. We also have two exciting raffles going on during Convention week. One is the chapter quilt raffle which the proceeds will be

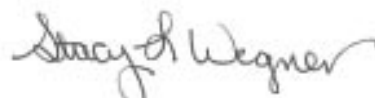
going to the RWCS Foundation and the other is the 30th Anniversary raffle. The Anniversary raffle includes three items: a beautiful painting by Sandy Hokanson, a one night stay at the St. James Hotel for 2008, donated by Associated Bank, and the sample set of anniversary tiles. That is not all, we also have the 30, 30 Gallon Crock display, a surprise at Commemorative pick up on Thursday, and a Convention history display. I can't wait to see you all at the high school.

So make this Anniversary Celebration memorable for all. This is your week RWCS Members, so make it special. As you make the most of it, please seek out myself or any Board members to let us know how we can make it an even better experience next year.



Stacy Wegner

Best regards,



Stacy Wegner

Business & Convention Manager
Red Wing Collectors Society



Salt Glazed Pottery



11th Anniversary
Collectors Firing
Friday, July 13th
Doors open at 8 a.m.

Every Piece will be stamped with our Limited Edition 11th Anniversary stamp. Limited quantity of numbered pieces.



- Zinc Glazed Pottery
- Hand-Turned Miniatures
- Red Wing Pottery T-Shirts
- Collectors Books
- Personalize your own piece of Red Wing Pottery



- Homemade Baked Goods
- Wholesome Breads
- Breakfast & Lunches
- Coffee - Espresso
- Ice Cream



Old West Main St., Red Wing
651-388-3562 or 1-800-228-0174
Open 7 days a week

Pottery family returns to Red Wing roots

By Ruth Nerhaugen
Staff Writer

As the third-generation Gillmer family member to run Red Wing Pottery, Scott Gillmer finds it rewarding that not only has he been able to keep the business going, but he's keeping it going by returning to its roots.

Hand-made, hand-turned, hand-painted pottery is being created once again on Old West Main Street, taking the industry full circle in the town whose name is synonymous with pottery all over the country and beyond.

The family's pottery story is one of triumphs and tragedies as the business struggled to maintain a foothold in the American marketplace.

Gilmer's grandfather, Richard A. Gillmer, was a lead salesman for the Potteries back in the 1940s, working through the Chicago Merchandise Mart.

The Red Wing business had successfully shifted its production from agrarian or

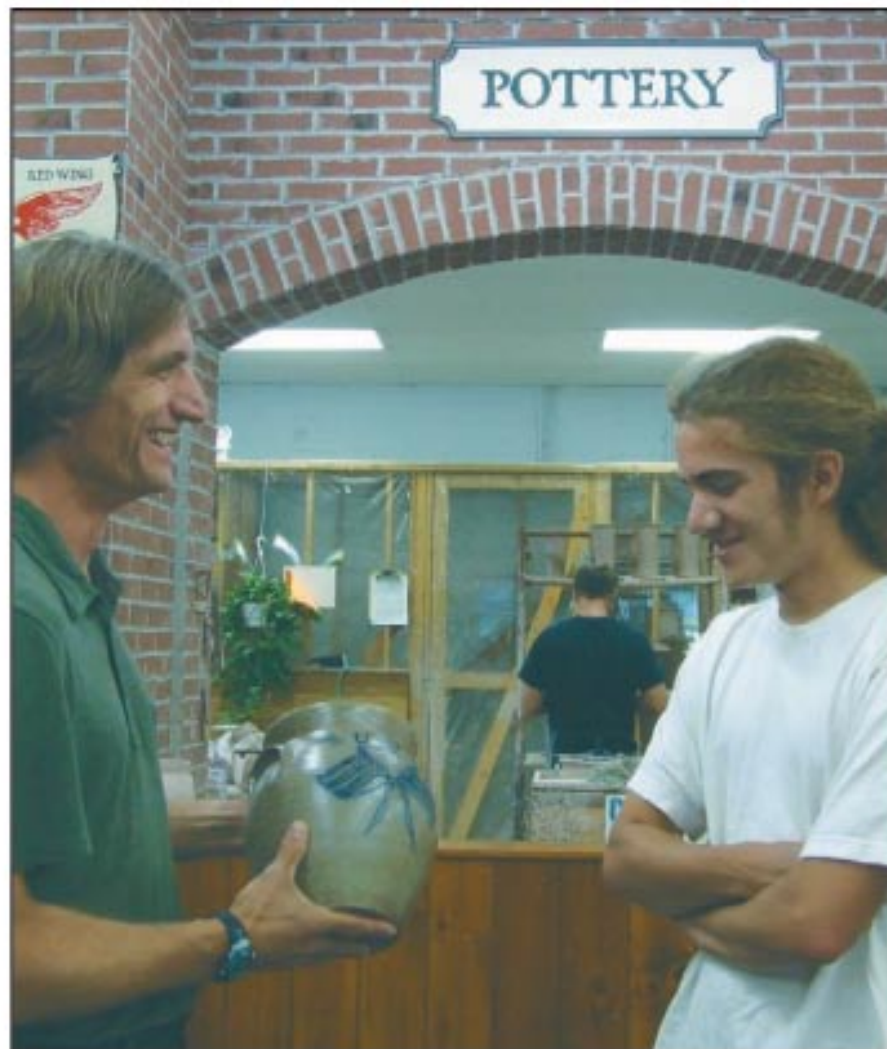
farm-based products to home products and decor including dinnerware, lamps and vases, Scott Gillmer said.

But in the mid-1950s, it again struggled to find a niche in the marketplace. "There was a feeling, even in the '50s, that we were not doing all we could to take care of that market," he said. It was decided that the business needed a leader who knew and understood the market from a sales perspective — someone like Gillmer.

He moved to Red Wing in the mid-1950s to serve as president of Red Wing Potteries, and his wife, Adabelle, got involved in running the salesroom.

Manufacturing ends

The second generation of Gillmers grew up in the business. "My mom, Kay Volkmann, worked as a clerk in the salesroom" during summers while attending college, Scott Gillmer said. At the same time, his father, Richard S. Gillmer, worked summers in the garden shop. They met, married and started the third generation.



Scott Gillmer (left), who brought salt-glaze manufacturing back to Red Wing Pottery, checks out a new piece with his son, Scotty. — photos by Ruth Nerhaugen

"Continuing the Tradition"

"Welcome Red Wing Collectors"



"2007 Collectible and 2007 Christmas Ornament Unveiling"

Come to see our 2007 unveiling at 11:00am and enjoy a brat and Coke at our annual "brat feed" Thursday, July 12, 11am to 3pm

RED WING STONEWARE CO.

4909 Moundview Drive
651.388.4610

Highway 61 North
800.352.4877

Visit our Website www.redwingstoneware.com

"Production Viewing Windows in Factory Store"

Factory Store Open Daily

Factory Tours Weekdays 10:30am, 1pm & 3:30pm • Group & Bus Tours Welcome
Retail Salesroom • Personalized Stoneware • Factory Seconds

"My roots really are here," Scott said.

Richard S. Gillmer got his college degree in industrial psychology and moved to St. Paul. They had three children, including Scott, when Red Wing Potteries faced another marketplace crisis in 1967.

"They moved back to Red Wing to see if my dad could help with the struggling Potteries," Scott said. What he found was that "this industry really couldn't be saved."

Richard S. Gillmer wrote the book "Death of a Business" about the end of the manufacturing process during a strike. "He wrote from a management perspective," Scott pointed out; Richard A. Gillmer still was company president.

"It was very difficult on the family," Scott Gillmer said, "because of the tension that existed in a small community —

having to shut down a major employer whose workers were represented by a union that was at odds with management. It was very difficult on the whole town."

Attempts to keep it going "just didn't work." However, Scott Gillmer said, "it was not due to any one person, or the inability of management and workers to get along. It was due to the Japanese entering the marketplace with Mikasa and Noritake" and other well-made products that cost less.

"It was very difficult for U.S. manufacturing to compete," he said. "They took over the U.S. marketplace. ... We know in hindsight that it was the market shift and cheap labor" that brought an end to pottery manufacturing here. "Grandpa kept the business going," however, as an outlet for the remaining inventory and a retail store selling pottery that had not been made here.

Scott Gillmer has few memories of that time. "I was only 3 years old," he said, and the family moved back to the Twin Cities. He grew up in Minneapolis but always had close ties to Red Wing, where all of his grandparents lived.

Dinnerware expands

"We would come back to Red Wing and visit the salesroom, get candy in the candy shop like every other kid. I did that, too, as part of my growing up," he said.

For about 14 years his aunt, Susan Gillmer, now retired in Florida, ran the pottery salesroom. She found a new marketplace niche: dinnerware.

"During her era, we were the largest salesroom for dinnerware in the Upper Midwest," Scott said. It became a huge tourist draw and a primary destination for people looking for dinnerware — including Mikasa and Noritake.

"Isn't that ironic," Scott said, acknowledging that those lines were part of the competition that affected the business in the mid-1960s. "But that is survival in business. You have to move forward to keep the business going into the future."

He firmly believes, "Every generation, it's their responsibility to look at the market and come up with their niche to keep the business going. You can't rely on what made you successful in the first generation."

He got his master's degree in business administration about the time Susan Gillmer decided to retire. She and his parents approached him, asking if he wanted the opportunity to run the family business.

"Of course, being a young man right out of business school, I jumped at the opportunity.

"I knew it didn't mean I could rest on what my parents and my aunt had done. The market had changed" with the opening of the Mall of America and the entry of big-box retailers and department stores into the dinnerware business.

"We needed to make a shift."

When he took over in 1991, Scott Gillmer said, "It was up to me to put my imprint on the business — to figure out how to make it viable for my run" at the helm.

He thought about the types of things he and his family enjoyed while traveling around the U.S., and realized they especially enjoyed discovering history and exploring what made a town unique.

Salt-glaze returns

"The greatest asset of the business is the name: Red Wing Pottery," Gillmer decided, "and the link to the history of Red Wing. We know tourists like, and want to experience, a place's history. In this case, pottery and Red Wing are almost synonymous, since pottery started about the same time as the town.

To him, the answer was a natural: "Start manufacturing again."

He realized they could not compete in the dinnerware field. "I thought, 'Let's go back to our roots,'" Gillmer said — to the salt-glaze era when production totally relied on craftsmen. "We decided to make hand-turned, hand-painted pottery" that is different from anything being mass-produced by machines in factories. The first firing was in 1996.

Three potters see their work through the entire process.

"They wedge the clay, turn it on the wheel, create a pot, hand-decorate the pot, load and stack it in the salt-glaze kiln and fire the kiln, just like craftsmen did in the very early era," Gillmer said.

The difference between these pieces and other pottery are clear to see, he said. "Each piece is unique, and you can interact with the potters while you are in the salesroom. They answer questions" and show how pottery is made. "It places that much more value on the product."

The salesroom offers mass-produced pieces, too. Gillmer is more than a little pleased to report that the U.S.-made Red Wing Pottery outsells the foreign-made product "by quite a bit."

Top sellers are:

1. The new salt-glaze Red Wing pottery.
2. Red Wing Stoneware, also made locally.
3. Fiesta Ware, made in the United States.

The fourth generation of Gillmers has stepped into place. Hannah, now studying nursing, worked at the potteries during high school, and Richard Scott "Scotty" Gillmer Jr., still in high school, is on the staff this summer. Charlie's just entering high school.

They are exploring their own paths. "There is no succession plan in place," said Gillmer, whose wife, Nancy, helps run the retail store.

The newest addition to the business operation is Smokey Row Cafe, featuring Jenny Lind Bakery. It's named for the

nearby neighborhood where people working at the pottery once lived.

Right now, Gillmer's biggest struggle is trying to decide whether to resume dinnerware manufacturing. "I'd love to figure out a way to get back in the market niche," but he hasn't come up with a plan ... yet.



Sesrock planters and a huge Red Wing boot in trademark stoneware colors sit in the doorway of the Pottery Salesroom.



**WE SET OUT TO
MAKE WORK BOOTS.
WE ENDED UP
BUILDING A COUNTRY.**

Since 1905, we've been handcrafting the shoes that have built skyscrapers, roads, bridges, railroads, and homes. In short, we've helped build America. We all have. Red Wing, the shoe company. And Red Wing, the community. Our strength lies in the people who live here. Play here. And work here. The proof is in every brand we make.



BUILDING GREAT BOOTS FOR OVER 100 YEARS



Red Wing Shoe Company 314 Main Street Red Wing, Minnesota 55066

Anniversary firing set

By Ruth Nerhaugen
Staff Writer

Three potters who are at the heart of the salt-glaze pottery revival at Red Wing Pottery will be releasing one-of-a-kind pieces July 13 — an annual event during the Red Wing Collectors Society convention.

Because the society's 30th anniversary convention coincides with Red Wing's 150th birthday, they also released a limited edition of 150 half-gallon salt glaze jars earlier this year. The

hand-thrown pieces are decorated with a cobalt blue birch leaf, a traditional emblem found on salt-glaze pottery going back to the city's early days.

They sold out right away. The first buyers were in line all night waiting for No. 1 and No. 2, Red Wing Pottery President Scott Gillmer said.

At the same time, Red Wing Stoneware Co. released one-pint candy crocks. Larger plastic crocks bearing the city's sesquicentennial logo are being marketed as flower planters, and can be seen all over town.

The July 13 pieces will reflect the inspiration of Red Wing Pottery's three potters: Scott Keith and Mark Connolly, who have been with the new salt-glaze manufacturing operation since the first firing in 1996, and Alex Wilson from Scotland, who joined them about eight years ago.

The three men can be seen making pottery seven days a week at the



Potters Mark Connolly (left) and Alex Wilson made special pieces for the 11th anniversary firing. — photos by Ruth Nerhaugen

salesroom on Old West Main Street.

This year's anniversary pieces, which commemorate that 1996 firing, will be bottom numbered and stamped.

Connolly has created 2-gallon water coolers that have a traditional appearance. Keith made some folk art pieces

with a French look, and Wilson created chicken feeders and a series of face jugs including the visages of Gillmer and his fellow potters.

The anniversary pieces will go on sale at 8 a.m. July 13. They are sold first-come, first served, with a limit of one per customer.



One of the face jugs is designed to resemble Scott Gillmer.

Now Open!

A New Senior Living Community

Ebenezer at Fairview Red Wing

- Located adjacent to Fairview Red Wing Medical Center
- Quality new construction
- Beautiful views inside and out
- Support and services to maintain independence
- Outstanding amenities – including covered, indoor parking

Call for a
tour
651-267-5444

Ebenezer at Fairview Red Wing
470 Fairview Blvd.
Red Wing, MN 55066
651-267-5444

• Independent living • Assisted living • Memory care

EBENEZER
fairviewebenezer.org

Morley jug, other treasures on display at museum

By Ruth Nerhaugen
Staff Writer

The E.A. Morley jug, a rare item whose history is still being explored, is among specialty pieces currently on display at the Red Wing Pottery Museum, located on the second floor of Pottery Place Mall, 2000 Old W. Main St.

The museum is free and open to the public seven days a week, the same hours as the mall.

A new Kid's View exhibit will be installed during Red Wing Collectors Society Convention Week, adjacent to the "mold shop" diorama at the museum entrance, said Diane Hallstrom, vice president of the Red Wing Collectors Society Foundation, which maintains the museum. "It'll be a surprise."

The 30-gallon Morley jug alone is worth the visit. It's a truly significant piece, Hallstrom said.

The jug was purchased by a family in 1967 from Richard Gillmer. The family had come to purchase dinnerware, but ended up taking home the advertising jug that once sat in the front window of the Morley liquor store.

"The building still exists, across from Kelly's Bar" on West Main, Hallstrom said. It's now Hilltop Communications. A photograph in the Red Wing 150th book released by the Red Wing Republican Eagle includes a photo of the jug in the window, she noted.

Unique items

It went to Wisconsin. Recently a family member discovered how rare it is, and wanted to make sure it would be placed

where it can be seen by everyone — back in Red Wing.

Because the foundation is a nonprofit organization and it does not purchase items for the museum — the board does not want to compete with collectors — the jug was purchased by a local member who loaned it to the museum.

A number of other interesting pieces will be displayed during the convention, Hallstrom said, including a stoneware keg which was attempted when



MUSEUM continued on page 8

Copies of historic ledger will be available

Wire-bound copies of a historic 1892-1914 Red Wing Pottery ledger will be available during the Convention.

"The original is dissolving" and must be sealed to be preserved, said Diane Hallstrom of the Red Wing Collectors Society Foundation.

The ledger was part of the Hutchison collection which the museum acquired last year. It provides almost 300 pages of information.

"The first part is an expense ledger" that includes the cost of building materials for Red Wing Stoneware Co. in 1892-93, Hallstrom said. The rest lists special orders over the next few decades.

"It's somebody's journey to sell stoneware" in towns and at companies all over the region, including Canada.

"It's just phenomenal, really," she

said. "It answers a lot of questions, but it ends up asking more questions," and fuels the continuing effort to preserve and research more about the clay industry.

The ledger will be unveiled at the outdoor antique show July 8 in downtown Red Wing, then will be sold at Larry's Jugs all week and at the Convention Thursday, Friday and Saturday.

Only 250 copies were printed, Hallstrom said. But if sales are brisk at the outdoor show, officials believe they'll have time to order more copies.

"We're doing this to get information to the membership," she stressed. "There is other paper memorabilia we will do in the future, but this is the most important one."

For more information, go online to www.rwcsfoundation.org.

Wiederholt's SUPPER CLUB

**STEAKS • SEAFOOD
COCKTAIL LOUNGE**

**DINING AT
ITS FINEST!**

Hours:

4:30-10:30 Mon.-Thurs.

4:30-11:00 Fri. & Sat.

11:30-10:00 Sunday

**LIVE
ENTERTAINMENT
Friday & Saturday**

Reservations Phone

651-437-3528 or

507-263-2263

**15 miles North
of Red Wing
on Highway 61
(In Miesville)**



Country Side Antique Mall

31752 65th Avenue
Cannon Falls, MN 55009
507-263-0352

*20 miles west of Red Wing
Hwy. 19 to Cannon Falls stoplight
then one mile south.*

**Two floors of antiques and
collectibles. Lots of Red Wing
stoneware, dinnerware and
art pottery.**

55+ DEALERS



Monday - Saturday 9:30-5:30
Sunday 11:00-5:30

Check out our website at:
www.csamantiques.com

**SPECIAL CONVENTION
HOURS**

Tue.-Wed.-Thurs.-Fri.-Sat.
July 11-12-13-14
8 to 8
Sun. 9-5:30

Museum *continued from page 7*



Diane Hallstrom holds one of the museum's prized pieces, the Van Deuson jug, a lunch hour piece which is on loan. It's one of the most decorated pieces in the collection.

the nation needed its metals for the war effort. Only two or three were made, she said. "It was not a success."

Other items can be found in the museum's three display areas: stoneware, art pottery and dinnerware. Hallstrom cited a jug shaped like a baked potato, a tiny crock with cover, a Steinwick frog and a store display piece that once promoted Gypsy Trail dinnerware.

"There will be some neat new salt-glaze coming in," too, she added.

The primary goal of The Foundation, through the museum, "is to preserve and educate about the history of Red Wing Pottery and American potteries," Hallstrom said. "We're focusing on the Red Wing clay industries now. So many people are passing away here. The history and knowledge

about how they did things is passing away, too."

In the works

The museum is unique for a couple of reasons, she pointed out.

- Because it's located in a retail outlet, it's open seven days a week during mall hours, and it's free to the public. Tours are self-guided, plus there are three videos visitors can watch.

- It's 100 percent run by volunteers, with no expenses paid for travel or meals. The 11 board members pay their own way; members come from all over the country to meetings three or four times a year.

"Some very significant things have been donated to the museum, she said. That seems to be encouraging more pottery owners to loan items to the museum. "People really enjoy being a part of it," she said. The goal is to have a sample of everything Red Wing made.

The board has more than two dozen projects in the works, Hallstrom said. Because she's here in town, she's familiar with most of them. As a board, however, officials decided to set priorities and focus on five main activities for the coming year: The Potteries Ledger (see related story), the Pottery Park project (see related story), building improvements, archiving additional papers from the Hutchison collection, and creating a data base using a new inventory program that will include each item's history.

The museum sees lots of visitors during the Convention. Hallstrom would like to see more people there throughout the year.

"We love to do tours," she said. "It's really important to keep the information alive."

For information, call her at (651) 388-5744 or go online to www.rwcfoundation.org.

VISIT THE ST. JAMES SHOPPING COURT:

- Clara's Gifts & Coffee
- Marita's
- Refined Skin
- Vestiges, Ltd.
- Red Wing's Silver Forest
- Shear Perfection
- Destiny Diamond Jewelers
- The Levee
- American Ski Jump Hall of Fame

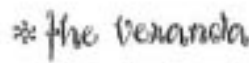


ST. JAMES HOTEL
RED WING

FOUR DINING OPTIONS. ONE TOUGH DECISION!



Dinner in a wine cellar atmosphere.



A favorite breakfast & lunch venue.



Your local British pub, featuring live music.



Coffee, pastries, gifts & internet access.

Member, National Trust Historic Hotels of America®

406 MAIN STREET, RED WING, MINNESOTA 55066
651-388-2846 WWW.ST-JAMES-HOTEL.COM

2007 Convention Schedule

WEDNESDAY, JULY 11

8:00 – 12:00	Board of Directors Meeting	L 100
11:00 - 3:00	Brat Feed (badge pick up for pre-registered attendees) Sponsored by Pottery Place Mall	Pottery Place Mall
12:00 – 3:00	Auction Check-In, Catalogs for Sale	Gymnasium

THURSDAY, JULY 12

8:00 – 4:00	Courtyard Café Open	
8:00 – 4:00	Set up the Display and Rare Items	J 100 Pod
8:00 – 7:00	Registration Opens Anniversary Tile Pickup, Raffle Ticket Sales	Courtyard Café
8:00 – 10:00	Chapter Presidents Meeting	L 100
8:00 – 4:00	Ephraim Pottery Demonstration	Courtyard Café
8:00 – 10:00	Commemorative Distribution	H Pod
8:00 – 11:00	Auction Check-In	Gymnasium
8:00 - ???	Distribution of Bid Numbers; Auction Catalog for Sale	Gymnasium
9:00 – 3:30	Sale of Educational Material	Courtyard Café
9:00 – 10:00	Orientation for First Timers	Choir Room C-100
10:30 – 12:00	Welcome Session Keynote Address	Auditorium
11:00 – 12:30	Bus Tour Registration (at Information Table)	Courtyard Café
12:15 – 1:00	Kids View Auction Check-In	Auditorium
12:15 – 4:15	Auction Preview	Gymnasium
12:30 – 3:00	Historical Red Wing Bus Tour – Departs>Returns High School	Doors by Auditorium
1:00 – 2:00	Chapter Meetings and Hospitality Rooms	To Be Announced
1:00 – 3:30	Kids View Seminars & Auction	Art Room Auditorium
1:00 – 4:00	Commemorative Distribution	H 100 Pod
4:30 - 11:00	Auction	Gymnasium
5:30 – 8:00	View Displays	J 100 Pod

FRIDAY, JULY 13

8:00 – 3:20	Registration Opens Anniversary Tile Pick Up & Raffle Ticket Sales	Courtyard Café
8:00 – 2:30	Courtyard Café Open	Courtyard Café
9:00 – 10:50	Commemorative Distribution	H 100 Pod
8:30 – 3:20	Displays Open	J 100 Pod
9:00 – 3:20	Sale of Educational Materials	Courtyard Café
9:00 – 10:00	Orientation for First Timers	Choir Room C-100
9:00 – 10:00	Set Up Show and Sale/Souvenir Items	Gymnasium
10:00 – 10:50	Adult Educational Seminars	H 200 Rooms (see page 10 & 11)
10:00 – 10:50	Kids View Seminars	Art Room
11:00 – 11:50	Adult Educational Seminars	H 200 Rooms (see page 10 & 11)
8:00 – 3:30	Ephraim Pottery Demonstration	Courtyard Café
11:30 – 3:00	Kids View Super Sleuth Bus Tour	Art Room
12:30 – 1:20	Adult Educational Seminars	H 200 Rooms (see page 10 & 11)
1:30 – 2:20	Adult Educational Seminars	H 200 Rooms (see page 10 & 11)
1:30 – 3:00	Commemorative Distribution	H 100 Pod
2:30 – 3:20	Set Up Show and Sale/Souvenir Items	Gymnasium

3:00 – 3:30	Charter Member Reception	Courtyard Café
3:30 – 5:30	Annual Business Meeting/ Raffle ticket winners drawn	Auditorium
6:00 – 8:30	Potter's Picnic (Serving food until 7:00 p.m.) Sponsored by Chamber of Commerce	Colvill Park

SATURDAY, JULY 14

7:00 – 1:00	Courtyard Café Open	Courtyard Café
8:00 – 9:00	Set up Show and Sale	Gymnasium
8:00 – 10:30	Registration Opens Anniversary Tile Pick Up & Raffle Ticket Sales	Courtyard Café
8:00 – 10:30	Commemorative Distribution	H 100 Pod
8:00 – 11:00	Kids View Plate Pick Up	Courtyard Café
8:00 – 11:00	Auction Prices-Realized Catalogs for Sale	Courtyard Café/Gym
8:00 – 1:30	Display Open to the Public	J 100 Pod
9:00 – 10:30	Show and Sale Open to Registered Members ONLY	Gymnasium
10:30 – 1:30	Show and Sale Open to the Public	Gymnasium
9:30 – 1:00	Commemorative Lottery (while supplies last)	H 100 Pod
12:00 – 1:00	Board of Directors Meeting	L 100
1:30 – 3:00	Show and Sale Removal	Gymnasium
1:30 – 3:00	Display Removal	J 100 Pod
5:30 – 6:30	Banquet Social Hour	R.W. Golf Club
6:30	Banquet Dinner	R. W. Golf Club



Stop in for one of our:
Subs, Soups, Salads or Wraps
Serving Bridgeman's Ice Cream

THE SUBHOUSE™
WE DELIVER!
210 Bush Street
Red Wing, MN
388-0111
HOME OF THE GOURMET SUB™



Education Day – F

Orientation for First Timers Russ Johnson

Thursday, July 12 & Friday, July 13
9:00 am, Room C-100 (Choir room)

Pottery Design and Creation Design Development: From Concept to Catalog Piece and Beyond Ephraim Potters

Session III, 12:30 - 1:20, Room H206/207
Session IV, 1:30 - 2:20, Room H206/207

Kevin Hicks: From a moment of inspiration to a final catalog piece, the many steps of how pottery designs are conceived and developed.

John Mathews: Collector resources, finding the rest of the story.

Ephraim Pottery was founded in 1996 when Kevin Hicks and a friend decided to leave a local production pottery and begin making pottery in the Arts & Crafts style and tradition. Researching the Arts & Crafts period pottery, the work of Grueby Pottery they found most intriguing. Grueby was known for its craftsmanship and a unique green glaze with a very organic look and feel. Ephraim glazes have a similar organic look and feel. The faience glazes are very mobile during firing, making every piece unique. The "antique

green" and "waterless" glazes are the most similar to what was known as Grueby green. Ephraim collectors have helped the company to have steady growth from 1996 to present.

Ephraim's pieces begin as a lump of clay, no casting is done. The work is all collaboratively done; the potters each have more than 20 years experience throwing pottery on the wheel. Most of the glazes have between 10-20 years ceramic experience, and Glaze Foreman, John Raymond, has a Masters Degree in Art. By working collaboratively, each person's strengths are used to create the best finished piece possible.

"L3DG3R"

Dave Kuffel

Session II, 11:00 - 11:50, Room H202

Session III, 12:30 - 1:20, Room H202

Session IV, 1:30 - 2:20, Room H202

The newly found sales ledgers from Red Wing Pottery that are now in the Museum collection will be discussed. He will discuss what has been documented and sorted. In addition to the documentation he will explain the various ledgers that have been documented thus far, what they can tell us, and how they are being preserved and protected for future generations.

Conventon 2007 marks Dave's 28th consecutive Conventon. Dave's Red Wing collecting has primarily focused on stoneware and, most recently, on advertising bee hive jugs, crocks, and butter jugs.

He also has an interest in Mission style furniture and architecture, Ephraim Pottery and wooden bodied automobiles (woodies).

Dave states that Red Wing - the people, the stoneware, the Conventon, and the city have become a significant part of his life. Dave currently serves on the RWCS Foundation Board of Directors which has responsibility for all facets of the Red Wing Pottery Museum, and he encourages all RWCS members to visit and support the museum!

What's New in Your Museum

RWCS Foundation Board Members

Session I, 10:00 - 10:50, Room H200

Session II, 11:00 - 11:50, Room H200

Session III, 12:30 - 1:20, Room H200

The Board Members have made a list of action items for your museum. This list was narrowed down to 27 items. Takes this opportunity to share your thoughts on what you feel is most important as the Museum moves forward. Some of these action items include working on the archives of paper memorabilia, promotions, new items, etc. Come share your ideas and thoughts as the Board lay out its directives for the future.

The main purpose of the Foundation is to preserve Red Wing and other American stoneware and pottery for future generations. The displays are a historical reflection of what has happened in Minnesota and the United States during the past century. The museum's purpose is to encourage

collecting in those who may not know about the RWCS, as well as to educate those who stop to visit.

Ebay Tips and Tactics for the Beginning Internet Collector

Chris Osterholz

Session II, 11:00 - 11:50, Room H210

Session III, 12:30 - 1:20, Room H210

Session IV, 1:30 - 2:20, Room H210

This seminar will cover registering, searching, buying, selling, delivery. Most of the topics are in an open discussion format, and are more philosophy/tips oriented rather than the "click here" detail.

Chris Osterholz has been collecting for 18 years, through which his collecting tastes have changed somewhat, but is still locked onto the stoneware side. Mostly adv jugs, mugs, & crocks, salt glaze, and unusual or rare items.

Latest RW Dump Finds

Steve Showers

Session III, 12:30 - 1:20, Room H205

Session IV, 1:30 - 2:20, Room H205

Steve Showers started digging for Red Wing stoneware in 1967. His presentation will encompass past and present "finds". Steve has been digging every fall and winter for the past 22 years and has found many interesting items over the years which he

Kids View Seminars July 12-13, 2007

Thursday, July 12th

Friday, July 13th

Time	Group 1**	Group 2**	Time	
1:00 to 1:45	Make Your Own Stoneware Mike Robinson Kids will stamp and glaze a miniature replica of stoneware (the piece will be fired and can be picked up on Friday) Art Room*	Auction Viewing and Grading The donated pieces for Group 2 Auction are available for kids to inspect. Auction rules will be reviewed. Auditorium*	10:00 to 11:30	Discovery: How did they do it? Again the children will continue to try and uncover just how the potters and how the many women who "hand painted" the dinnerware did it. Art Room I
2:00 to 2:35 ***	Auction viewing and selection The donated pieces for Group 1 auction are available for kids to inspect and offer bids for top three choices. Auction rules are reviewed. Silent Auction begins. Auditorium	Make Your Own Stoneware Kids will stamp and glaze a miniature replica of stoneware (the piece will be fired and can be picked up on Friday) Art Room	11:00 to 11:50 ***	NEW! Give it a Spin Ephraim Pottery New this year the children will be able to take some time to learn how to create small pots on the potters wheel. Art Room II
3:00 to 3:30 ***	Silent auction continued (if necessary) Children are encouraged to stay and watch the bigger kids do real bidding so they can learn how far coming years. Auditorium	Kids View Bidding Auction Begins Dick Houghton will conduct the auction. Kids will have Red Wing bucks of varying amounts to do "real" bidding on donated items. Auditorium	11:30 to 3:00	NEW! Super Sleuth Bus Trip Put on your Super Sleuth overcoat and grab your spy hat and glasses. The children will be on a trip to the RWCS Museum and (time permitting) to other historic pottery sites. Art Room

*All children meet in the Art Room. **Children will be divided into two groups based on age. ***Starting times may vary.

PARENTS: Your child will be expected to stay in the Art Room or Auditorium for the duration of this activity UNLESS you have given express permission that your child may leave independently.

Friday, July 13, 2007

will share with you. A few of his more interesting finds include a five gallon jug from Edmore, North Dakota, a bisque bank from the Chicago expo of 1893, many salt glaze lids, advertising butter crocks, jugs and bowls. Come see what's new this year from the Dump!

Steve retired in December of 2003 after 40 years with the 3M Company. He digs bottles in the summer and pottery in the winters. He collects items from Goodhue County, Minnesota. He and his wife, Phyllis, live in Welch, Minnesota.

Red Wing 101 and Red Wing 102

Paul Wichert

Linda Krueger

Session I, 10:00 - 10:50, Room H201

Session II, 11:00 - 11:50, Room H201

How familiar are you with Red Wing Stoneware and Pottery? Want to learn more? RED WING 101 and 102 are geared toward the new collector. Paul Wichert and Linda Krueger will present computer-aided seminars on the history of the Red Wing pottery, what they produced, what's collectible and what's not. They will discuss collector trends, an item's 'condition' and will provide you with some pointers on what to watch for when you're buying. They will also cover ovals, signatures, and shape numbers, reuse of the molds, as well as various glazes, colors, and color combinations. RED WING 102 is new this year and is a follow on to the original RED WING 101 presentation.

An Information Technology professional by trade, Paul Wichert is a long time collector of Red Wing and Advertising Stoneware. As an antique dealer for over 15 years, he has been an active member of the Red Wing Collectors Society since 1992. A contributor to the RWCS Newsletter, Paul recently completed a term on the RWCS 'Vision' committee. He has served with the RWCS commemorative distribution crew since 1993. He has participated as an appraiser at Waukesha Historical days' celebrations

and at the Antique Treasures Expo with the Keno Brothers (Antiques Road Show) in Madison, Wisconsin. Hosted by the Fox Riverwalk Antique mall, he also has presented the Red Wing 101 seminar for various groups of antique dealers and collectors.

By profession, Linda Krueger is a self employed Interior Decorator in the Twin Cities area. She is also an antique dealer with over 20 years experience and collects mostly stoneware, and occasionally, an art pottery piece or two. A native of Sleepy Eye, MN, she also collects a variety of Sleepy Eye items. An active member of the Red Wing Collectors Society since 1989, Linda has served on the commemorative distribution committee continuously since 1993. She is a member of the Gopher Chapter and was a commemorative chair person for 3 years.

Red Wing Salt Glaze: Leafs, Butterflies, Birds, & More

Rick Natynski

Session I, 10:00 - 10:50, Room H204

Session III, 12:30 - 1:20, Room H204

Session IV, 1:30 - 2:20, Room H204

Whether you're an advanced collector of the salt glaze stoneware turned out of the Red Wing and Minnesota Stoneware companies, or just starting out, this session is for you. The books that exist show only the tip of the iceberg when it comes to all of the great salt glaze that's out there. Come, sit back and enjoy the photos of the rare pieces shared in this presentation.

Rick Natynski has been a collector of Red Wing Stoneware since 2000. He is the current editor of the Official RWCS Newsletter. Rick lives in Brookfield, WI with his wife Bob. He is an avid collector of Salt Glaze and Red Wing Advertising pieces.

Recent Finds & Discoveries in the RW Dump

Dennis Nygaard & Austin Fjeredal

Session I, 10:00 - 10:50, Room H206/207

Session II, 11:00 - 11:50, Room H206/207

Digging continues at the Red Wing stoneware dump. Dennis will be sharing what has been discovered this past year, and he will also be exhibiting some of his better finds which he has not displayed for many years.

Dennis is a long time RWCS member who has not missed a convention. He has been digging in the Red Wing dump for 25 years, often with another digger and RWCS member, Steve Showers. In addition to his dump finds, Dennis collects stoneware fruit jars from all United States potteries as well as pottery from New Brighton, Pennsylvania.

Dennis lives in Hastings, Minnesota with his wife, Virginia, and three sons.

Safely Displaying the Legacy

Bruce Selfridge

Session I, 10:00 - 10:50, Room H203

Session II, 11:00 - 11:50, Room H203

Session III, 12:30 - 1:20, Room H203

Bruce Selfridge will be using both visual as well as actual displays to show attendees how to safely and artistically display your Red Wing Wares. He will also touch on various hazards such as earthquakes, fires, and other issues. In addition Bruce will discuss commercial products that are available to help protect collections as well as innovated ideas that collectors have come up with to safely display their wares.

Bruce Selfridge and his wife live in Healdsburg, CA and has been an RWCS member for over 17 years. He and his wife began collection with the Red Wing crocks 20 years ago when his wife bought two at an antique show in San Francisco and now have expanded to various types and brands of

stoneware and some artware. Bruce and his wife proudly display their collection in every room of their house as well as the attic.

Village Green Dinnerware

Terry Moe

Larry Roschen

Session I, 10:00 - 10:50, Room H208

Session II, 11:00 - 11:50, Room H208

The Village Green Line Seminar includes a profile of each of the patterns in the line in the order of their introduction. It begins with Village Green and its strange derivatives in pink and pale green, then moves to Delta Blue, Wheat, Two Step, Picardy, Provincial (1960s), and Village Brown. It also explores the relationship between Village Brown and Ernest Sohn. The seminar will conclude with an examination of the Sohn Butler Mold line. This seminar is a continuation of the dinnerware project designed to profile all of the dinnerware lines produced by Red Wing.

Larry Roschen and his wife Kathy have collected Red Wing dinnerware since 1980. Salt & pepper sets, pitchers, and teapots are the focal point of their collection. They have also built nearly complete sets of several dinnerware patterns including Adenres, Tip Toe, Kashmir and Charleston Blue. Odd and hard-to-find pieces are another area of interest. Research of original Red Wing documents and other vintage publications has also become an important part of the collecting experience. Larry and Kathy served as RWCS commemorative managers 1993 through 2000, and are active members of the Gopher Chapter. Larry currently serves as the dinnerware advisor for the "Ask the Experts" page on the RWCS website.

Education Seminars • Friday, July 13, 2007

	H-200	H-202	H-203	H-204	H-208	H-201	H-206/207	H-205	H-210
Session I 10:00 to 10:50	What's New in Your Museum Red Wing Foundation		Safely Displaying the Legacy Bruce Selfridge	Red Wing Salt Glazes: Leafs, Butterflies, Birds & More Rick Natynski	Village Green Dinnerware Terry Moe Larry Roschen	RW 101 Paul Wichert & Linda Krueger	Recent Finds & Discoveries in the RW Dump Dennis Nygaard & Austin Fjeredal		
Session II 11:00 to 11:50	What's New in Your Museum Red Wing Foundation	L3DG3R Dave Kufel	Safely Displaying the Legacy Bruce Selfridge		Village Green Dinnerware Terry Moe Larry Roschen	RW 102 Paul Wichert & Linda Krueger	Recent Finds & Discoveries in the RW Dump Dennis Nygaard & Austin Fjeredal		Ebay Tips & Tactics for Collectors Chris Osterholz
Session III 12:30 to 1:20	What's New in Your Museum Red Wing Foundation	L3DG3R Dave Kufel	Safely Displaying the Legacy Bruce Selfridge	Red Wing Salt Glazes: Leafs, Butterflies, Birds & More Rick Natynski			Pottery Design and Creation Ephraim Pottery	Latest RW Dump Finds Steve Showers	Ebay Tips & Tactics for Collectors Chris Osterholz
Session IV 1:30 to 2:20		L3DG3R Dave Kufel		Red Wing Salt Glazes: Leafs, Butterflies, Birds & More Rick Natynski			Pottery Design and Creation Ephraim Pottery	Latest RW Dump Finds Steve Showers	Ebay Tips & Tactics for Collectors Chris Osterholz

RWCS Chapter News

CANNON VALLEY (MINNESOTA)

Connie Kolberg, President
26251 Miesville Trail
Cannon Falls, MN 55009
(507) 263-9245; ckolberg@citlink.net



GOLDEN STATE (CALIFORNIA)

Bruce Cameron, President
PO Box 690, French Camp, CA 95231
(510) 537-0325;
www.goldenstateredwing.com, bfr554@aol.com



GOPHER CHAPTER (MINNESOTA)

Dennis Nygaard, President
114 24th Street W,
Hastings, MN 55033
(651) 437-7943; denwirmy@aol.com



INDIANA WINGERS CHAPTER RWCS

John Ingwersen, President
11141 Echo Grove Lane,
Indianapolis, IN 46236
(317) 823-8543; jhenrying@aol.com
Sue Cox, Secretary/Treasurer
(317) 872-0815; countryquest@sbcglobal.net

ILLINOIS CHAPTER OF THE RWCS

Mary Osterholz, President
PO Box 62, Rockton, IL 61072
(815) 624-6201; osterstiff@aol.com

IOWA CHAPTER OF THE RWCS

Wayne Burk, President
304 Allamakee Street, Waukon, IA 52172
(563) 568-4387; whburk@salamander.com



LEWIS AND CLARK CHAPTER (NORTH DAKOTA AND MONTANA)

Con Short, President
804 West Marie
Hibbs Blvd.
Marshalltown, IA 50158
(641) 351-4163;
sandy@moidrite.com



Sheila Schumacher, Secretary
26900 Chouwen Ave., Elko, MN 55020-9747
(952) 242-4203; rjaj@mchsi.com

NEBRASKA REDWINGERS

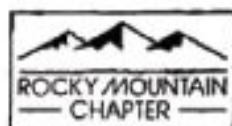
Steve Splittgerber, President
7843 Red Oak Rd., Lincoln, NE 68516
(402) 770-7600; rsplitger@hotmail.com

PUGET SOUND (WASHINGTON)

Wally Armstrong, President
24129 Old Owen Rd.,
Monroe, WA 98272-7681
(360) 794-7172; armst101@aol.com

ROCKY MOUNTAIN (COLORADO)

Jack May, President
1709 Whistlepig Lane,
Broomfield, CO 80020-9666
(303) 466-4715; jackmay1@aol.com



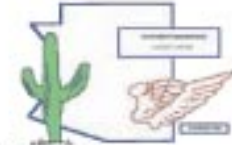
SIOUXLAND REDWINGERS (SOUTH DAKOTA)

Glenn Beall, President
215 W. 7th Street
Logan, IA 51546-1221
(712) 644-2256; gbeall@loganet.net



SOUTHWEST REDWINGERS (ARIZONA)

Charles Hanson, President
7755 E Laguna Azul Ave. #137
Mesa, AZ 85209; cdhanson@prodigy.net



SUNSHINE STATE REDWINGERS (FLORIDA)

John Dougherty, President
1792 Walden Pond Dr.
Ft. Pierce, FL 37945
(772) 460-7920

Darlene Duecker, Secretary
1950 NW 86th Terrace
Pembroke Pines, FL 33024
(954) 560-9622; srrw@bellsouth.net

TRAILS WEST (MISSOURI/KANSAS)

Vivian Perry, President
1816 SW Summit
Valley Drive
Lee's Summit, MO 64081
(816) 246-4421; bobvivperr@aol.com



Larry Birks, Vice President
26400 S Hickory Trail
Harrisville, MO 64701
(816) 380-1096; brgr3@earthlink.net

WISCONSIN CHAPTER, RWCS

Pete Pavloski, President
1411 Rapids Trail
Nekoosa, WI 54457-8688
(715) 325-3715; pbpav@hotmail.com

WOLVERINE CHAPTER (MICHIGAN)

Sue Speedy, President
5079 S. Seymour Rd.,
Swartz Creek, MI 48473
(810) 938-3228; thespeedys@tcwireless.us



Charlotte Ackerman, Secretary
1256 East Chippewa River Road
Midland, MI 48640
(989) 832-2527; chardave@charter.net

2007 RWCS Keynote

Thursday, July 12, 10:30 am - Auditorium

Dustin Winterowd

Dustin, who earned the distinction as an Eagle Scout in the Boy Scouts of America in 2007, resides in the Red Wing area, and graduated this year from high school.

Keynote

Dustin recently completed a restoration project on the kiln at the Pottery building. During the presentation, Dustin will explain what led him to this project, what obstacles he encountered and eventually persevered over, and the results of his efforts. Dustin will be presenting numerous photos of the project from start to finish, and will answer questions regarding the work that he was able to do on the kiln.



2006 Convention Attendance

2,154

Red Wing Collectors By State:

Arizona	14	Arkansas	2	California	30
Colorado	12	Connecticut	1	Florida	10
Idaho	3	Illinois	64	Indiana	12
Iowa	182	Kansas	28	Manitoba	5
Maryland	5	Michigan	25	Minnesota	1,162
Missouri	18	Montana	9	Nebraska	51
North Dakota	34	Ohio	12	Oklahoma	3
Pennsylvania	6	South Dakota	46	Tennessee	7
Texas	10	Utah	1	Virginia	2
Washington	9	Wisconsin	389	Wyoming	1

29 states represented, and Canada

Membership as of 6/13/07 - 5,491

RWCS Board of Directors



Photo courtesy of Rick Natynski

President

Sue Jones Tagliapietra
2219 Lakeland Ave
Madison WI 53704-5636
608-241-3072 rwcssj@yahoo.com

VP

Jolene McKoon
3124 4th St., Unit 8
Moline, IL 61265
309-797-3894 jmckoon@att.net

Secretary

Paulette Floyd
208 E. Somonauk
Yorkville, IL 60560
630-553-9234 pjfloyd@sbcglobal.net

Treasurer

Mark Collins
7312 Lake St.
Omaha, NE 68134
605-351-1700 markcollins@cox.net

Historian

Steve Brown
1816 Sakenda Rd.
Buffalo, MN 55313
763-684-2400 after 5pm
bigpaws@charter.net

Representative at Large

Russa Robinson
1970 Bowman Rd.
Stockton, CA 95206
209-463-5179 russa@aol.com

Representative at Large

Jerry Erdmann
W15416 Fair-Morr Rd.
Tigerton, WI 54486
715-535-2094 jjerd@frontiernet.net

Auction Manager

Jeff Floyd
208 E Somonauk
Yorkville, IL 60560
630-553-9234
pjfloyd@sbcglobal.net

Co-Commemorative Managers

John Tremble
942 Becky Circle
Hudson, WI 54016-7509
715-381-0006
rwscmmemorative@hotmail.com

Matt Huepfel

rwscmmemorative@hotmail.com

Education Manager

Terry Speedy
5079 S Seymour Rd
Swartz Creek, MI 48473
810-938-3228
thespeedys@tcwireless.us

July Convention Support Personnel

Pre-registration

Donna & Chuck Hanson

Show & Sale

Cindy & Pete May
423-639-2477
rw3pcmay@earthlink.net

Display Room

Julie & Glenn Beall
712-644-2256 gbeall@logonet.net

Newsletter Editor

Rick Natynski (not pictured)
13425 Watertown Plank Road
Elm Grove, WI 53122-9998
414-416-WING (9464)
rwcsnewsletter@wi.rr.com

RWCS Business Office:

Business/Convention Manager
Stacy Wegner
rwcs1@redwing.net

Administrative Assistant

Lori Anderson (not pictured)
rwscmem@redwing.net

PO Box 50
2000 Old West Main St., Suite 300
Red Wing, MN 55066-0050
651-388-4004 or
800-977-7927
Fax: 651-388-4042
Website: www.redwingcollectors.org

LIBERTY'S

RESTAURANT & LOUNGE



Decor of Red Wing Yesteryear

Welcome Collectors!

Open Daily 8 a.m.

**Serving Breakfast,
Lunch & Dinner
Since 1975**

Featuring Sandwiches,
Pizza, Steaks, Seafood,
Mexican, Italian and
American Cuisine.

Online Menu
www.libertysonline.com

388-8877

Free shuttle service to and from local motels

**303 W. Third Street
Downtown Red Wing**

Things to pick up at the 2007 Convention

1. **Attendee packet:** It's back by popular demand. Enclosed in your attendee packet will be a schedule of events, education sessions, and a gift to all members to remember this 30th Anniversary celebration.

2. **Annual Convention Commemorative:** As always, it is the highlight of the Convention as the year-long guessing comes to an end: Is it art pottery, dinnerware or stoneware?

3. **The Supplement:** This is the place to find all the society happenings, details on the Convention, feature stories and information about what local businesses have to offer.

4. **The Anniversary Tile:** To mark the 30th Anniversary of the RWCS (1977-2007), the committee had a one-of-a-kind limited edition pottery tile made by Door Pottery in Madison, Wis. Only 800 were made, so get yours fast because supplies are limited for onsite Convention sales.

5. **Chapter Quilt Raffle Ticket:** As everyone learned at the Convention last year, the Trails West Chapter asked each of the chapters to submit a patch to be put in a quilt. The quilt was assembled by Linda Russell of the Trails West Chapter. The proceeds from the raffle ticket sales will be donated to the RWCS Foundation.

6. **30th Anniversary Raffle Ticket:** In addition to the quilt raffle the Anniversary Committee has put together three prizes for another raffle: one-of-a-kind Sandy Hokanson painting, one-night stay at the St. James Hotel donated by Associated Bank, and the sample set of the 30th Anniversary tiles. Visit the anniversary table in the café to learn about the silent auction items.

7. **A 5-by-7 inch copy of the Anniversary print.** These are color prints of the Sandy Hokanson painting in the raffle. The image provides a visualization of those first Conventions, which planted the seeds for the

Society's 30-year history.

8. **Convention Button:** This year's official button has been provided by the Wolverine Chapter. In keeping with the theme of celebrating the 30th Anniversary, it features a beautiful 30-gallon salt-glaze crock.

9. **Ledger Copies:** The RWCS Foundation will be selling printed copies of ledger book 2 from the Hutchison Collection. This is a great resource for any collector to have in a reference library.

10. **RWCS Apparel:** There is a new supplier of official RWCS gear this year



— Underground Graphics. Check out their table in the Courtyard Cafe to see the new styles, and share your ideas for official RWCS wear.

McDONALD'S OF RED WING
Celebrate 150 Years
with a locally designed and
crafted 1/2 Gallon Crock



Available at
McDonald's
OR
Visit our booth
July 14th
at the Red Wing
High School

2006 Holiday
Crock
still available



2770 N. Service Rd.
Red Wing
Minnesota



Visit the
**GOODHUE COUNTY
HISTORY CENTER**

1166 Oak Street
Red Wing, MN
(651) 388-6024
www.goodhuehistory.mus.mn.us

HOURS
Tues.-Fri. 10am-5pm;
Sat. & Sun. 1-5pm
Closed Mondays & Holidays

Welcome
Collectors!

Red Wing
CORNER DRUG
401 West Third (651) 388-3521

and

Red Wing
**CORNER MEDICAL
CENTER PHARMACY**
701 Fairview Blvd. (651) 267-2422

"Service
with a
Smile"

Anniversary raffle features three grand prizes for three decades

The Red Wing Collectors Society 30th Anniversary Committee has organized a Convention raffle to celebrate three decades. Three prizes will be given away.

1. RWCS 30th Anniversary Print. This original acrylic painting captures the roots of the 30-year history of the Red Wing Collectors Society. Local artist Sandy Hokanson created the painting to represent the memories of those first Conventions.

2. One-night stay in Red Wing for the 2008 Convention. Associated Bank has generously donated a St. James Hotel "B&B" style package for the 2008 Convention. This package includes overnight accommodations for two in a beautifully appointed Victorian guest room, breakfast for two in the Veranda,

a coupon to Jimmy's Pub, and morning coffee, tea or hot chocolate in the historic lobby. This prize package is valued at \$225.

3. The 30th Anniversary Tile collection. This is a collection of one-of-a-kind sample glazes of the 30th Anniversary tile created by Door Pottery. The tile design was commissioned by the committee specifically for the anniversary. Only 800 tiles were produced; they are available to RWCS members either by pre-order or in limited quantities at the Convention.

Tickets can be purchased during Convention at the 30th Anniversary table located in the cafeteria at Red Wing High School. The drawing will be on Friday, July 13, at the Annual Business Meeting. You do not need to be present to win.

Bits and pieces



Over the years, the historic pottery dump has yielded shards dating back to the early years of the industry in Red Wing. This group of salt-glaze pieces dates back as far as 1877. A walkway and interpretive kiosk overlooking the dump are being constructed this summer.

Membership Application Form

A Primary \$25 annual membership is afforded all the rights and privileges of the organization. An Associate \$10 annual membership is afforded all the rights and privileges of the organization except for the receipt of the newsletter. There **must be at least one Primary membership per household address** in order to have other members at that address having Associate member status. Each membership is afforded the right to purchase one Convention commemorative.

Please indicate if your membership is:

New Membership
 Renewal

Type of membership:

Primary annual membership fee \$25
 Associate annual membership fee \$10

Name _____

Address _____

City _____ State _____ Zip _____

Email Address _____

MEMBER and/or Chapter who interested you in joining: _____

Send Check, money order, or credit card info to: Red Wing Collectors Society
 P.O. Box 50
 Red Wing, MN 55066-0050

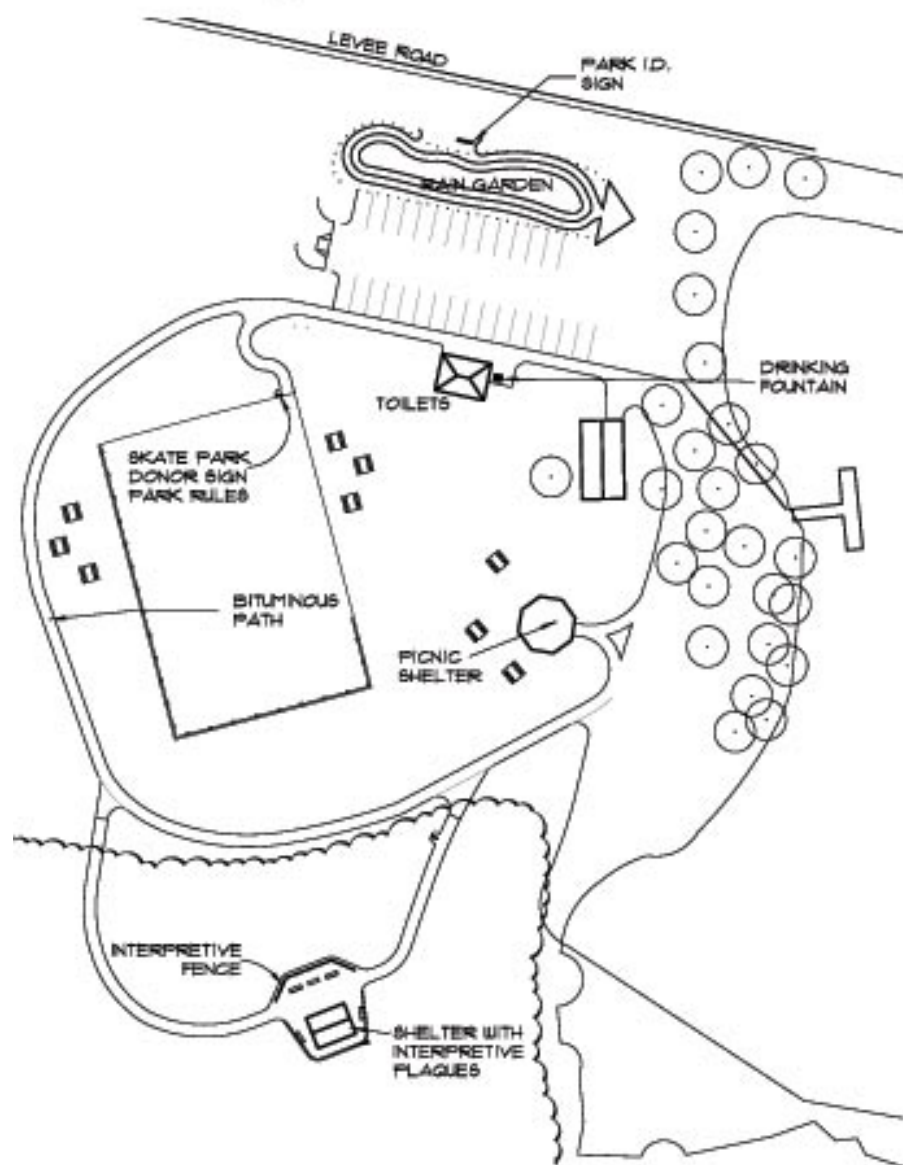
RED WING COLLECTORS SOCIETY INC. COMMEMORATIVE INFORMATION

1977	Salt Glaze Crock	250
1978	Common Jug	350
1979	Butter Churn	400
1980	Sponge ware Bowl	400
1981	Brown-top Jug	750
1982	Cherry band Mug	697
1983	Stone Mason Fruit Jar	1,026
1984	Salt-glazed Cooler	1,161
1985	Ice Water Cooler	1,750
1986	Acid Proof Measure	1,982
1987	Red Wing Ashtray	2,328
1988	Pompeii Plate	2,600
1989	Gray Line Pitcher	2,682
1990	Fancy Jug	3,540
1991	Pantry Jar	3,551
1992	North Star Jug	4,260
1993	Chicken Fountain	4,819
1994	20-lb Crock	5,660
1995	Giraffe Planter	6,186
1996	Cookie Jar	7,175
1997	20# Salt Glaze Crock	7,508
1998	Blue Iris Pitcher	7,564
1999	5 Gal. Kover Weight	7,444
2000	Hamm's Pitcher	7,190
2001	Sponge Bowl	6,901
2002	5 gal. Ball Lock Packing Jar	6,888
2003	Leaping Pegasus figurine planter	6,089
2004	Brushware Vase	5,790
2005	Red Wing Self Draining Jar	5,323



2006	Round-Up Teapot	5,191
------	-----------------	-------

Pottery Walk will overlook historic dump



By fall, the city of Red Wing hopes to complete a bituminous walkway around the skate park on Levee Road plus a loop with a kiosk and benches overlooking the historic pottery dump.

By Ruth Nerhaugen
Staff Writer

Efforts to preserve the legacy of the pottery industry as part of Red Wing's history are under way with the development of Pottery Park on Levee Road below the Pottery District.

The city of Red Wing is in the process of creating the Pottery Walk as a loop extending from the skateboard park area toward the old pottery dump, where shards and rejects were discarded over the years by the various pottery manufacturing operations on Old West Main Street.

The walk is part of a master plan that

has been in development for several years, city Planning Coordinator Brian Peterson said. It has been designated a Legacy Project for Red Wing's sesquicentennial.

Pottery Park got its start in the early 1990s, when a fishing pond was created on the south side of Levee Road. The Red Wing Rotary Club adopted the park.

Development continued with fishing facilities, a picnic area and a skate park which opened about 1 1/2 years ago but is still being finished, Peterson said. The parking area is being redeveloped, and a "rain garden" will be added to help manage storm water that runs off the paved areas.

This summer a bituminous walkway will be installed surrounding the skate park, plus landscaping will be completed.

On the far side, Peterson said, between the skate park and the railroad tracks, a loop will take visitors to a point overlooking the pottery dump.

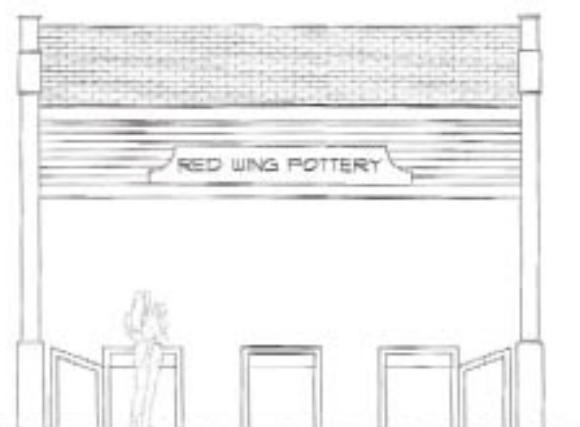
"There's been a lot of excavation there," Peterson said, describing the dump as a resource to pottery collectors because it enables them to identify different eras of pottery making.

"It's just like Mississippian archeology" which reveals much about prehistoric Native American tribes that once lived here, he said. "It's industrial archeology."

The city's plan — the work of by landscape architect Larry Wacker of St. Paul and a graphic designer, Steve Harmon of Mahtomedi, Minn. — calls for a walkway made of textured and colored concrete that has been installed in place of flagstone in Levee and John Rich parks.

At the top will be a kiosk designed for historic interpretation.

Peterson described it as a 20- by 16-foot roofed structure with open sides. The ends are designed with a pottery building motif, he said — "a parapet



Interpretive and informative plaques about the clay industry will be displayed inside the 20- by 16-foot kiosk.

wall that mimics the historic pottery buildings."

Inside will be a grouping of plaques that tell the history of the industry, the dump area, the products manufactured here and the people of the industry. There also will be an explanation of how the industry adapted to changes, and information on the early clay business and its importance to Red Wing, Peterson said. The story will be told in images and narrative.

The Red Wing Collectors Society Foundation helped with the plan, collected photos and information and made a substantial contribution to the park.

"When you look at the plaques you will be looking across the tracks, over the dump at the Pottery Salesroom area," he said. "You will be able to see the general area of the Pottery District."

A Pottery Park sign will be erected on Levee Road. It features an image of Lou McGrew, one of the best known Red Wing potters.

The city hopes to complete the project in September — and to continue developing the area.

One additional idea, Peterson said, is to create an "interpretive fence" with panels containing shard samples of products made during the different eras.



The ends of the roof are designed to resemble the parapet walls on historic pottery buildings.

Pottery collectors recognize value of the dump

By Ruth Nerhaugen
Staff Writer

Years of working cooperatively with the city of Red Wing will come to fruition this summer with the creation of Pottery Park.

"It's so neat that everybody realizes the historic significance of the clay industry to Red Wing — to make Red Wing what it is today," said Diane Hallstrom, vice president of the Red Wing Collectors Society Foundation. "To preserve it is to preserve our history."

Not everyone would recognize the importance of ... a dump.

But as Red Wing collectors know, the shards found in the Pottery Dump located along the railroad tracks behind the Red Wing Pottery Salesroom are treasures of modern archeology.

The museum, which is operated by the foundation, has a couple of display cases containing stoneware shards from

the dumping ground.

"The whole Red Wing clay industry did not mark every piece that was made," Hallstrom said. During the era from about 1877 to the 1930s, pieces were stamped occasionally.

When people today find unmarked crocks, churns and other items at auctions and sales and in people's basements, they can only be 90 percent sure the pieces are Red Wing unless evidence can be found.

If shards or imperfect pieces are found in the dump, buried under 10 feet or dirt, it's possible to identify the era those pieces were made, and the documentation is about 99.9 percent certain, Hallstrom said.

North Star Pottery produced for only four years, she added, and most of its pieces were very similar to Red Wing, but few items were signed. When the North Star building was razed, important remnants were found.

Pottery Park is located between the Pottery District on Old West Main Street and Levee Road. The city and the local Rotary Club created a skate park near the pond, and the city also envisioned a walking path and interpretive sites related to the clay industry, Hallstrom said.

The top of the loop will overlook the dump, which is overgrown with trees and bushes. Located on city property, it has been made available to some historic diggers over the years.

For the past few years, collectors society representatives have worked with public officials who share an affection for local history to select the best location, Hallstrom said.

When the city said it wanted to undertake the development as a Legacy Project for Red Wing's 150th birthday, the Red Wing Collectors Society donated \$15,000 for a structure to house interpretive signs, and the foundation donated \$5,000 toward work on signage and photos.

The foundation also is working to get donations to fund benches and trees as memorials. Word of mouth already has produced funds for three or four benches, Hallstrom said. The project will be detailed in a session at the convention, and the fundraising effort will get serious later this summer.

"They're just starting to grade the trail," Hallstrom said. A ribbon cutting will be held next year at convention time.



WELCOME COLLECTORS
More Collectables!



Show off your love of
Red Wing Pottery with our
~ Limited Edition ~

1,000's of charms available

2 Gallon Water Cooler
5 Gallon Crock or
Beehive Jug

**LIFE'S
LITTLE
OASIS**

213 Bush Street • Red Wing
651-388-5171

LLD@lifeslittleoasis.com
M-W 10-7; Thur. Sat. 10-8; Sun. 11-4
Locally owned and operated

**Welcome
Collectors!**

- Breakfast served all day
- 55 plus special
- Burgers
- Delicious dinners
- Full service Bakery

Perkins
RESTAURANT
& BAKERY
OPEN 24 HOURS



812 WITHERS HARBOR DRIVE
RED WING • 385-0783
www.perkinsredwing.com

**RED WING AREA
CHAMBER
of COMMERCE**

is proud to welcome visitors of
the 30th Anniversary of
Red Wing Collectors Society!

Plan on attending
the Potter's Picnic
Friday, July 13th.

Come back to
Red Wing, it's
beautiful year round!

439 Main Street • 388-4719
www.redwingchamber.com

Pottery Park sign features 'Lou' McGrew

The image on the new sign designating Pottery Park is that of C.L. "Lou" McGrew, one of the best known old-timers at the Red Wing Potteries.

He began in the pottery trade at age 12 in Louisville, Neb., learning the craft of hand turning in 1885. He came to the North Star Stoneware Co. in Red Wing in 1892 and made hand-turned products until they closed in 1896. He then transferred to Minnesota Stoneware Co.

When hand-turned stoneware was replaced by molded production in 1918 McGrew became a foreman under Red Wing Union Stoneware Co. He retired in 1947, the same year that Red Wing ceased making stoneware.

After retiring, McGrew continued his pottery contributions to Red Wing. Among other activities, he participated in a Red Wing Art Association open house in 1952 and trained students at area schools as well as in the potteries.

Red Wing continues its rich pottery history through Scott Gillmer and Red Wing Pottery. The stoneware pieces produced there today are done in the hand-turned style by skilled production potters using both a salt-glaze with cobalt blue decoration and Bristol glaze ware that represents the Greyline of the old Red Wing Potteries.

Red Wing Pottery Sales produces beautiful stoneware crocks, cookie jars, pitchers and more.



Lou McGrew, one of the last of the potters who hand-turned pieces for the Red Wing clay industry, is pictured on the Pottery Park sign.

AL'S ANTIQUUE MALL

New merchandise arrives almost daily

512 PLUM STREET
(Across from Salvation Army)
RED WING, MN 55066

651-388-0592
Fax: (651) 388-7474
Toll Free: (888) 388-0572

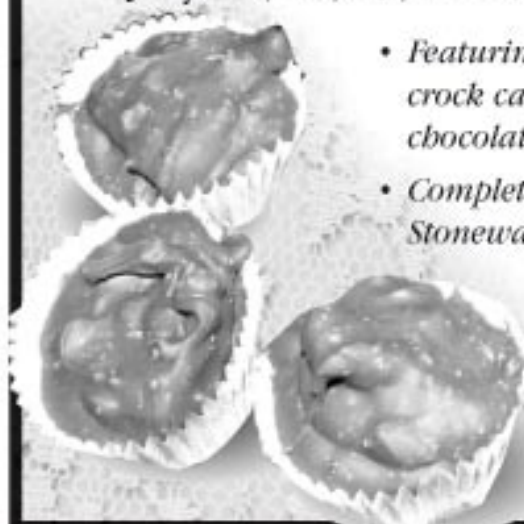
Hours: Mon.-Sat. 9am to 5 pm; Sun 10am to 5pm
Extended Convention Hours: 9am to 9pm Wed.-Sat.

"Come Join Us in Red Wing"
Al & Cathy Novek

Red Wing Confectionery

Hours during the week of the
Collectors Society Convention

July 11, 12, 13, 14 • 9 a.m. - 5 p.m.



- Featuring molded chocolate crock candy and Red "Wing" chocolates
- Complete series of Red Wing Stoneware prints by Larry Veeder

1451 Hay Creek Valley Road
651-388-0174

Summer Hours:
Wed. 10-5; Sat. 9-3
or by appointment

Those were the days...

Things you can learn if you spend an afternoon reading past Red Wing Collectors Society Newsletters:

- The 1977 and 1978 buttons were sold after Convention for \$1.25 each or two for \$1.
- Post-paid copies of "The Clay Giants" and price guide were \$11.45.
- Approximately 250 members attended the second annual Convention, held at the Red Wing American Legion Club; they came from Minnesota, Wisconsin, Iowa, Missouri, Indiana, Illinois, Kansas, Nebraska, North Dakota and South Dakota.
- The second Convention featured 12 speakers on topics including "Pottery Production" by Dave Hutchison, "Early Stoneware Marks" by Larry Peterson, and "Pottery Shards" by Steve Showers.
- In 1979, the RWCS dues were \$10 for a single membership, and \$1 for each additional family member.

• There were 345 paid members of the RWCS in July 1978, increasing to 400 members in 1979.

• At the first auction in 1978, seven items sold, generating a total of \$60.70 for the RWCS treasury.

• In the early years of the newsletter there was a column called "Where is All the Red Wing!" People could report their finds and gain information on their pieces.

• Newsletter editor Dave Newkirk presented several awards for submissions for original research, the Birch Leaf Scholar, Kiln Setter's Award for planning the Convention, the Red Quill Award for article writers, and others.

• It was common to see in the newsletter surveys to spread information regarding where pieces were found, to create an inventory of what was made.

• For the first issue of the newsletter,



a total of 53 copies were mailed.

• In 1980 there were 120 tables and 500 people in attendance at the Convention.

• The single piece with the most press throughout the history of the newsletter is probably the Little Brown Jug.

• In the June 1982 issue of the newsletter it was reported that the Cornhusker Chapter had been formed in Nebraska and the Flickertail Chapter in

North Dakota.

• The Slaitth Jug sold at the 1981 Convention at the top price of \$2,650, and the boy with crock lunch-hour piece sold for \$1,800. The auction that year had 500 pieces and lasted for eight hours.

• In 1981 the commemorative price was \$8 for pickup and \$13 to have it mailed. This was the first year members could have their piece mailed if they did not attend.

• A dinner boat cruise was held at the 1983 Convention.

• In the early years of the newsletter the membership's names, addresses and phone numbers were published annually.

• 1984 was the first year that the commemorative was a secret unveiled at the Convention.

• There has always been a note to check your expiration date on each issue of the Newsletter.



**Memory
Maker
Antiques**

415 Main Street
Red Wing, MN 55066
(651) 385-5914
Open Daily 10-5

Across from the St. James Hotel in
downtown Red Wing

Thank you for letting us be your
fresh floral and garden center
experts for 121 years.

**Hallstrom's
Welcomes You!**

Enjoy your visit to Red Wing
during the convention.
Stop in and visit Hallstrom's
Downtown Shoppe or the
Greenhouses & Garden Center.

Established in 1890
Hallstrom's
FLORIST & GREENHOUSES
2025
Small Business
of the Year

Downtown Shoppe, 317 Bush St. • 388-7178
Greenhouses & Garden Center
785 Hallstrom Drive • 388-7173
www.hallstromsflowers.com

Randy's
Great Red Wing
Casserole Chicken

**GREAT
CHICKEN**
Dinners &
Buckets

BURGERS & FRIES
SANDWICHES
WRAPS
SALAD BAR
CONES
SHAKES
SUNDAES

BREAKFAST SPECIAL
\$5.55
Two eggs, toast,
choice of meat, & hashbrowns.

A Proud Sponsor of the Potter's Convention

Randy's
Hwy 61, Downtown Red Wing

LARRY'S JUGS



Our unique shop has specialized in Red Wing Stoneware and pottery for over 20 years. Our inventory includes items for the beginning collector and items to thrill the most advanced collector.



Our shop is about sharing information and having FUN!

Buy • Sell • Trade

I'll buy one piece, or the whole collection; also taking consignments.

LARGEST INVENTORY of Red Wing Stoneware and Art Pottery

751 Wilkinson Street
Red Wing, MN 55066
Larry Peterson • 651-388-3331

*Visit my booth at Countryside Antique Mall
31752 65th Ave., Cannon Falls, MN • 507-263-0352*



Convention Hours

July 6 - July 15
8 am - 6 pm
(Wed. & Fri. open 'til 8 pm)