



RED WING
COLLECTORS
SOCIETY

Founded in 1977

The
Last
Lunch
Hour

29TH
ANNIVERSARY
CONVENTION

July 6-8, 2006

Welcome Message from the Interim President

Welcome to the 29th Anniversary Red Wing Collectors Society summer Convention Week.

Holding true to form this year's convention week will keep you busy visiting with friends, learning about Red Wing and other pottery, and both buying something for your collection and/or selling something to make room for that new purchase.

We continue to be thankful for those insightful and revolutionary people who not only started this organization but knew it should be in Red Wing and chose the perfect time to hold a convention.

Please take time during this week to



Sue Jones Tagliapietra, Interim President RWCS

Photo courtesy Rick Natynski

enjoy all that Red Wing has to offer. I am always amazed that every year I learn something new to do and enjoy in the city and surrounding area.

Sunday's street sale will give you a chance to buy a treasure and support the RWCS Foundation. Take a stroll in the RWCS Museum at Pottery Place. The auctions on Tuesday and Wednesday

at the Armory always present an opportunity to find something wonderful for your collection. And this is all BEFORE the highlight of the week, the RWCS Convention. The educational seminars are consistently outstanding, the Thursday night auction is one of the few places you can buy the one special piece to complete your collection.

What will the commemorative be? That is always the question and it is never a disappointment.

Have a great week and come back

next year for the 29th Anniversary of RWCS and the 150th Anniversary of the City of Red Wing. It promises to be an exciting time.

Welcome from the Mayor

Welcome to Red Wing!

Whether you are returning to Red Wing for the Red Wing Collectors Society Convention or attending for the first time, please take time to get acquainted with our beautiful and historic community. Between your scheduled events, you may want to take a walk in our parks while watching the boats and barges work their way down

the Mississippi River. While downtown, visit our quaint stores and various art galleries. Note the beautiful flower baskets that create so much color around town. If you are interested in Red Wing's past, a trip up to the Goodhue County History Center may help answer some of your historical questions.



Donna Dummer, Mayor

Enjoy your stay and keep us in mind next year as we celebrate Red Wing's 150th Anniversary. It will also be the Collector's Society's 29th Anniversary. We'll have lots to celebrate!

...Exactly what you have been waiting for.

Authentic Italian food at a price you can't resist!

Bring the family, meet your friends or take it home!



178 Tyler Road S., Red Wing • 651-388-6199
Patio Dining • Open 7 Days a Week

2006 RWCS Keynote - Thursday, July 6, 10:30 - Auditorium

Mayor Donna Dummer

Mayor Dummer will be talking about the Celebration of the 150th Anniversary of the City of Red Wing. She will share with everyone about how the RWCS Convention will be a part of this historical celebration.

Main Keynote:

Mr. Tom Braun, Conservator- Tom Braun was a member of the team that worked extensively on the assembled the "Red Wing Retro: Extraordinary Pottery, Everyday Life" exhibit at the Minnesota History Center that opened July 1st. Mr. Braun will talk about both about the ways in which he was involved in development of the exhibit, but also share some tips and techniques for care and repair Red Wing Pottery. He will also talk about his restoration experience through his extensive work restoring a 5 gallon crock being displayed in the exhibit. Mr. Braun has documented the process of restoring this piece from start to finish and will be showing photos of the process from start to finish.

Tom Braun is an objects conservator at the Minnesota Historical Society in St. Paul, Minnesota. Tom received a Masters of Science degree in Art Conservation from the Winterthur Museum/University of Delaware Program in Art Conservation. Tom has also worked at the Field Museum in Chicago, and on archaeological excavations in Arizona, Italy, Greece, Turkey, and Pakistan. Tom is a Professional Associate of the American Institute for Conservation.

Welcome from the Business & Convention Manager

Stacy Wegner

Welcome back to the 29th Anniversary RWCS Convention and thank you for joining us here in Red Wing!

I am looking forward to meeting all of you at my first Convention. First off, I would like to thank everyone who has showed me the ropes and made it an easy transition for me as your new Business & Convention Manager.

As we gather together in Red Wing, we are looking forward to new and exciting things going on during

Convention Week. As you get together as friends, chapters and collectors, remember to enjoy the fun of Convention from the auction on Thursday to the Banquet on Saturday. I am sure that most of you have already started your Convention experience by attending the Foundation Outdoor Antique Show in downtown Red Wing earlier in the week along with the evening auctions, and stopping at street vendors and driveway sales to get you in the Convention spirit.

There are a few new opportunities to take advantage of at Convention including the new additions to the RWCS Foundation Museum. As many of you heard at MidWinter, a portion of the Hutchison Collection will be avail-



Stacy Wegner

able for viewing in the museum. The Foundation will offer guided tours of the museum on Thursday from 1 to 4 p.m. Terry Speedy, the Education Manager, has put together an exciting Keynote and a wonderful Education Program jam packed with information for every collector. He has a new Red Wing 102 class planned for those of you who are

looking to increase your Red Wing knowledge. If you are thinking about or planning to attend the Potter's Picnic sponsored by the Red Wing Area Chamber of Commerce, the Covill Aquatic Center has Friday night swimming for \$1 after 4 p.m., so bring your swim gear for some additional fun in the sun! Pete and Cindy May have once again worked with 160 sellers tables to

put together a great Show and Sale on Saturday. Convention wraps up again this year with the Saturday evening banquet. New this year is a brief slide show review of Convention 2006. Come and see if we capture you at Convention.

Just a reminder for attendees to save your 2006 Convention badges! This will be your FREE admission to the Minnesota History Center Red Wing Retro: Extraordinary Pottery, Everyday Life exhibit on Red Wing Pottery. The exhibit is open from July 1 - December 31, 2006, but all 2006 RWCS Annual Convention attendees get FREE admission from July 6-13 simply by showing your badge.

Special thanks to all the 2006 Convention Volunteers!

Remember RWCS Members, the Annual July Convention is your event. As you make the most of it, please seek out myself or any Board members to let us know how we can make it an even better experience next year.

2005 Convention Attendance

2,336

Red Wing Collectors Attendance by State:

Alabama	2	Arizona	9	Arkansas	7
California	28	Colorado	20	Delaware	1
Florida	7	Hawaii	1	Idaho	4
Illinois	80	Indiana	12	Iowa	194
Kansas	32	Manitoba	4	Maryland	5
Michigan	26	Minnesota	1,256	Missouri	26
Montana	5	Nebraska	54	North Dakota	36
Norway	1	Ohio	7	Oklahoma	4
Pennsylvania	2	South Carolina	4	South Dakota	49
Tennessee	5	Texas	10	Utah	3
Virginia	2	Washington	10	Wisconsin	428

Membership as of 6/12/06 - 4,966



**WE SET OUT TO
MAKE WORK BOOTS.
WE ENDED UP
BUILDING A COUNTRY.**

Since 1905, we've been handcrafting the shoes that have built skyscrapers, roads, bridges, railroads, and homes. In short, we've helped build America. We all have. Red Wing, the shoe company. And Red Wing, the community. Our strength lies in the people who live here. Play here. And work here. The proof is in every brand we make.



RWCS Board of Directors



Photo by Rick Natynski

RWCS Board Members and Business Office staff from L to R: Mark Collins, Interim Treasurer; Lori Anderson, Administrative Assistant; John Tremble, Co-Commemorative Manager; Paulette Floyd, Secretary; Jeff Floyd, Auction Manager; Sue Jones Tagliapietra, Interim President; Wally Armstrong, Representative-at-Large; Jerry Erdmann, Representative-at-Large; Terry Speedy, Interim Education Manager; Stacy Wegner, Business & Convention Manager; Steve Brown, Historian. Not pictured: Wendy Callicoat, Vice President; and Matt Huepfel, Co-Commemorative Manager.

Charmed By Red Wing

Looking for Charmed By Red Wing and a new charm for your bracelet this year? Wait until you see these cuties! We have 1 new Charm for 2006! Exquisitely, hand-crafted in sterling silver, these charms are true replicas of your favorite Red Wing pieces. Choose a crock, wing, bowl, jug, pitcher, vase or dinnerware piece. NEW this year...an Elephant ear leaf charm. Returning from last year, Rubber stamps-made up in adorable groups of your favorite Red Wing pieces...great for handcrafting your own personalized cards and stationery.



Look for Charmed by Red Wing
Saturday: At the show and sale
and
Locally at: Larry's Jugs
Red Wing, MN 55066
651-388-3331



Creator: Sherry Rehm
412 Minnetonka Way, Waterloo, WI 53594
To order or have a pamphlet sent, call or write
Hrs: 920-478-9557 • Call: 920-723-9557
Email: sherryk2@charternet

All charms are designed by Herb Redman of
The Voyagers Jewelry Design, Cambridge, WI
608-423-4446

Visit the web to see the design choices www.voyagerjewelrydesign.com

Interim President
Sue Jones Tagliapietra
2219 Lakeland Ave
Madison WI 53704-5636
608-241-3072
email: rwcssjr@yahoo.com

VP
Wendy Callicoat
3946 Five Mile Road
Seneca, MO 64865
417-850-4079
crocks701@aol.com

Interim Secretary
Paulette Floyd
208 E Somonauk
Yorkville IL 60560
630-553-9234
pjfloyd@sbcglobal.net

Interim Treasurer
Mark Collins
7312 Lake St
Omaha NE 68134
markcollins@cox.net

Historian
Steve Brown

1816 Sakenda Rd
Buffalo MN 55313
763-684-2400 after 5pm
bigpaws@charter.net

Representative at Large
Wally Armstrong
24129 Old Owen Rd
Monroe WA 98272-7681
360-794-7172
armst101@aol.com

Representative at Large
Jerry Erdmann
W15416 Fair-Morr Rd
Tigerton WI 54486
715-535-2094
jjerd@frontiernet.net

Auction Manager
Jeff Floyd
208 E Somonauk
Yorkville IL 60560
630-553-9234
pjfloyd@sbcglobal.net

Co-Commemorative Managers
John Tremble

942 Becky Circle
Hudson WI 54016-7509
715-381-0006
rwcscommemorative@hotmail.com

Matt Huepfel
rwcscommemorative@hotmail.com

Interim Education Manager
Terry Speedy
5079 S Seymour Rd
Swartz Creek MI 48473
810-938-3228
thespeedys@tcwireless.us

RWCS Business Office:
PO Box 50
Red Wing, MN 55066
800-977-7927
Fax: 651-388-4042
email: rwcs1@redwing.net
(business manager)
email:
rwcsmem@redwing.net
(administrative assistant)

I am running unopposed for the Vice President's position, and barring a write-in campaign, will be officially elected at the summer convention.

Jolene McKoon
3124 4th Street, Unit 8, Moline, IL 61265
(309) 797-3894 /
Email: jmckoon@att.net



I am running for the RWCS Representative at Large position.

Russa Robinson
1970 Bowman Rd., Stockton,
CA 95206
(209) 931-1066



2006 Convention Schedule

WEDNESDAY, JULY 5

8:00 – 12:00	Board of Directors Meeting	L 100
11:00 - 3:00	Brat Feed (badge pick up for pre-registered attendees) Sponsored by Pottery Place Mall	Pottery Place Mall
12:00 – 2:30	Auction Check-In, Catalogs for Sale	Gymnasium

THURSDAY, JULY 6

8:00	Courtyard Café Opens	
8:00 – 4:00	Set up the Display and Rare Items	J 115
8:00 – 7:00	Membership/Registration	Courtyard Café
8:00 – 10:00	Chapter Presidents Meeting	L 100
8:00 – 10:00	Commemorative Distribution	H 106
8:00 – 11:00	Auction Check-In	Gymnasium
8:00 - ???	Distribution of Bid Numbers; Auction Catalog for Sale	Gymnasium
9:00 – 3:30	Sale of Educational Material	Auditorium/Hallway
10:30 – 12:00	Keynote Address	Auditorium
11:00 – 12:30	Bus Tour Registration	Courtyard Café
12:15 – 1:00	Kids View Auction Check-In	Auditorium
12:15 – 4:15	Auction Preview	Gymnasium
12:30 – 3:00	Historical Red Wing Bus Tour – Departs>Returns High School	Parking Lot
1:00 – 1:45	Orientation for First Timers	H 215
1:00 – 2:00	Chapter Meetings and Hospitality Rooms	To Be Announced
1:00 – 3:50	Kids View Seminars Auction	Art Room Auditorium
1:00 – 4:00	Commemorative Distribution	H 106
4:30 - ???	Auction	Gymnasium
5:30 – 8:00	View Displays	J 115

FRIDAY, JULY 7

8:00 – 3:20	Membership/Registration (Courtyard Café Opens at 8:00)	Courtyard Café
9:00 – 10:50	Commemorative Distribution	H 106
8:30 – 3:20	Displays Open	J 115
9:00 – 3:20	Sale of Educational Materials	Auditorium/Hallway
9:00 – 10:00	Transport Show and Sale/Souvenir Items	Gymnasium
10:00 – 10:50	Orientation for First Timers	H 215
10:00 – 10:50	Adult Educational Seminars	H 200 Rooms
10:00 – 10:50	Kids View Seminars	Art Room
11:00 – 11:50	Adult Educational Seminars	H 200 Rooms
11:00 – 11:50	Kids View Seminars	Art Room
11:30 – 1:30	Pottery Demonstration	Courtyard Café
11:50 – 12:50	Lunch - On Your Own	Courtyard Café
	30th Anniversary Committee Meeting	
12:30 – 3:00	Kids View Educational Seminars	Art Room
12:30 – 1:20	Adult Educational Seminars	H 200 Rooms
1:30 – 2:20	Adult Educational Seminars	H 200 Rooms
1:30 – 3:00	Commemorative Distribution	H 106
2:30 – 3:20	Adult Educational Seminars	H 200 Rooms
2:30 – 3:20	Transport Show and Sale/Souvenir Items	Gymnasium/ Auditorium
3:30 – 5:30	Business Meeting	Auditorium
6:00 – 8:30	Potter's Picnic (Serving food until 7:00 p.m.) <i>In case of rain, it will be held at the MN State College – SE Technical</i> Sponsored by Chamber of Commerce	Colvill Park

SATURDAY, JULY 8

8:00 – 9:00	Set up Show and Sale (Courtyard Café Opens at 7:00)	Gymnasium
8:00 – 10:30	Membership/Registration	Courtyard Café
8:00 – 10:30	Commemorative Distribution	H 106
8:00 – 11:00	Kids View Plate Pick Up	Courtyard Café
8:00 – 11:00	Auction Prices-Realized Catalogs for Sale	Courtyard Café/Gym
8:00 – 1:30	Display Open to the Public	J 115
9:00 – 10:30	Show and Sale Open to Registered Members ONLY	Gymnasium
10:00 – 12:00	Kids View Yu-Gi-Oh Play and Trade	Courtyard Café
10:30 – 1:30	Show and Sale Open to the Public	Gymnasium
9:30 – 1:00	Commemorative Lottery (while supplies last)	H 106
12:00 – 1:00	Board of Directors Meeting	L 100
1:30 – 3:00	Show and Sale Removal	Gymnasium
1:30 – 3:00	Display Removal	J 115
5:30 – 6:30	Banquet Social Hour	R.W. Golf Club
6:30	Banquet Dinner	R. W. Golf Club

SUNDAY, JULY 9

10:30	Brunch – St. James Hotel	5th Floor
-------	--------------------------	-----------

RED WING AREA CHAMBER of COMMERCE

is proud to welcome visitors of
the 29th Anniversary of
Red Wing Collectors Society!

Plan on attending
the Potter's Picnic
Friday, July 7th.

Come back to
Red Wing, it's
beautiful year round!

439 Main Street • 388-4719
www.redwingchamber.com

Hutchsons donate rare items to museum

By Ruth Nerhaugen
Staff Writer

A collection that will take researchers years to fully examine — and could require new chapters in some old pottery history texts — has been donated by Dave and Bonnie Hutchson to the Red Wing Collectors Society Foundation.

The longtime Red Wing couple decided to give the historic documents and catalogs, molds and tools and rare Red Wing Pottery pieces to the Foundation Museum because that is where they believe the collection belongs.

"Just one owner shouldn't have it," Dave Hutchson said. "Everybody should have access to it, and have this kind of knowledge." The couple believes the materials should be used as an educational experience for all people, a chance to broaden and expanded



Dave and Bonnie Hutchson donated a large collection of rare items to the Red Wing Collections Society Foundation Museum. They kept only their miniature lunch hour pieces and a few items that they "hold close" because of memories. — Photo courtesy of Rick Natynski

Teddy Hutchson started Hutchson Pottery Molds Inc., which produced

"My dad was the last employee when the strike took (Red Wing Potteries) down," Dave Hutchson said. He was responsible for selling off equipment for R.A. Gillmer, president of the potteries, and helped clean everything out in 1967.

Some things were destined for the dump because Gillmer didn't want competitors to get hold of them and the company was ending production, Hutchson said. "But he had permission from Mr. Gillmer to keep" items that he felt were of interest and did not need to be destroyed, Dave Hutchson said.

His father also was in charge of honoring all the production orders possible before closing down the potteries. Wanting a souvenir, he created one final item.

Last lunch hour

"The last lunch hour piece to ever come out of Red Wing" was made by Teddy Hutchson, his son said. He created a tree and added "a conglomerate of different things," including a gopher left over from the popular football souvenir. He mixed glazes, and scratched the date in an edge before firing it.



"Teddy" Hutchson transformed a Hamm's Beer Bear bank into a catch-all for his young son, Dave.

After Red Wing Potteries closed down, his father continued to collect Red Wing. "Anything old that he could get related to the potteries, he kept," Dave Hutchson said.

HUTCHSONS continued on page 7

Waking up Red Wing
with Home Cooking!

BEV'S CAFE
DOWNTOWN RED WING
221 BUSH

Hometown Atmosphere

Home Cooked Meals

*Serving Breakfast,
Lunch and Dinner*

Hours: M-W 5 a.m.-7 p.m.
Th. & Fri. 5 a.m.-8 p.m.;
Sat. 6 a.m.-2 p.m.
Sun., 8 a.m.-2 p.m.

WELCOME COLLECTORS

**More
Collectables!**



Show off your love of
Red Wing Pottery with our
~Limited Edition~

**1,000's of
charms available**

2 Gallon Water Cooler,
5 Gallon Crock or
Beehive Jug - New this Year!

**LIFE'S
LITTLE
OASIS**

213 Bush Street • Red Wing
651-388-5171

Hutchsons will talk about collection

Dave and Bonnie Hutchson, RWCS members who have donated a large collection of rare and unusual pieces to the Red Wing Collectors Society Foundation Museum, will talk about the collection twice during the July 6-8 convention.

On Thursday, July 6, they will be at the museum to answer questions while volunteers conduct tours of the Museum. It is located on the second floor of the Pottery Place Mall, 2000 Old W. Main St., 2nd floor in the former Minnesota Stoneware Co. building. The nonprofit Museum is free and open to the public.

On Friday, July 7, as part of the annual convention, the couple will present two seminars explaining why they donated the collection. Education Day activities are open to Collectors Society members only.

Hutchsons *continued from page 6*

That final piece is among unique items the couple have donated to the foundation. The collection includes many things which are generic to the industry, such as clay and glaze formulas.

As collectors, he explained, "We really got into the basics of it." Catalogs and marketing materials were among the items he and his wife especially enjoyed collecting, as did his father.

The carefully preserved ephemera going to the museum — many boxes of paperwork and documents — includes a complete collection of catalogs and other marketing material dating back to the beginning of the Red Wing industry, including North Star and Union

Stoneware. Ultimately, every catalog ever produced will become available to collectors doing research, answer a lot of questions.

The Hutchsons moved recently to Rochester, Minn., but decided not to take the entire collection with them.

"Dave was talking about retiring," Bonnie Hutchson said, and they had to think about whether to move it all or come up with some other way of preserving it. She worked at Hallstrom's Florist with Diane and Dave Hallstrom, who are active in the Red Wing Collectors Society Foundation, so she asked Diane if the museum might want some things.

Rare and wonderful items coming to museum

The Hutchson collection which has been donated to the Red Wing Collectors Society Foundation Museum contains some truly unique items in addition to the last lunch hour piece and the catalog collection detailed in the accompanying story.

- Teddy Hutchson's modeling tools. A designer would draw an idea for a piece on paper, Dave Hutchson explained, then his father would carve that piece out of plaster. From that model a pattern mold would be produced, and from that first mold would come the production molds — big blocks and cases into which clay would be poured to produce the piece. Along with the tools, they donated the original plaster carvings that became the Cowboy plaques.
- Recipes for stoneware glazes and clay formulas dating from the days of salt-glazing through the era of art pottery and Floraline, along with the glaze and formula books used by the potters in their research and learning.
- A very old salesman's book that tracks the sale of Red Wing Stoneware advertising pieces. It answers questions about the numbers of specific pieces made and where they were sold.
- A bear spoon rest, which resembles an ash tray, in different stages of production. Until now, collectors were not certain whether it was made in Red Wing, but the pieces are proof that it was manufactured here.
- A birchbark pitcher which never went into production. It's an example of a piece that got as far as the pattern mold, Dave Hutchson said. A few pieces may have been cast, but after officials researched feasibility, a decision was made not to produce the piece at that time.
- A tan bear which Hutchson made for his son. It was a lunch hour piece that began as the Hamm's Beer bank, Dave Hutchson said. His father took the "Hamm's" off the front and instead created a woven basket designed so his little boy would have a place to store his "stuff," such as his little jackknife.



The birchbark line never included this pitcher. A pattern mold was made and a few pieces were cast, but it never went into production.

Where it belongs

"Oh, yeah," was the response, Bonnie Hutchson said. The Hallstroms and Larry Peterson came to their house, and the process of transferring began. "Some of the paperwork and pattern molds and items are so fragile," she said.

"It was very, very hard" to part with the pieces, Dave Hutchson admitted. "What's important is that it will give many people an education and knowledge base" for years to come, instead of letting just one auction buyer acquire it all.

All the old-timers used to share what they had learned to do, he recalled. "We can continue sharing. ... Just one owner shouldn't have it. Everybody should have access to it."

The collection is being donated to the museum in memory of his parents,



A bear spoon holder in various stages of production is evidence that the piece was indeed manufactured in Red Wing.

Teddy and Alice Hutchson.

"It's very important," Dave Hutchson said, "that it's all going back to where it came from — to Red Wing."

Bonnie Hutchson is in complete agreement.

"I can just see David's dad smiling. We did the right thing."

FIVE DINING OPTIONS— ONE TOUGH DECISION



ST. JAMES HOTEL
A D I N I N G

THE PORT

Five Dining
"Wine Spectators Award of Excellence"

JIMMY'S

Reminiscent of a
Neighborhood British Pub

the veranda

A favorite breakfast and lunch venue



Coffee, Pastries, Gifts,
and Internet access



Enjoy Brunch with
Spectacular Views

406 MAIN STREET, RED WING, MINNESOTA 55066
1-800-252-1875 WWW.ST-JAMES-HOTEL.COM

Collection is 'priceless' as educational resource

By Ruth Nerhaugen
Staff Writer

Years will be needed to fully catalog the Hutchson collection, but that doesn't mean all the pieces and documents will be tucked away, out of sight, while officials and volunteers work to organize and document it.

The first exhibit featuring rare items will be ready in time for the 2006 Red Wing Collectors Society Convention July 6-8 in Red Wing.

The Cowboys, which are among the rarest figural pieces made by Red Wing, are the centerpieces of an educational display at the museum, located on the second floor of the Pottery Place Mall, 2000 Old W. Main St.

Foundation spokeswoman Diane Hallstrom said a new diorama on a rear wall illustrates how the pieces were made, from beginning to end.

The exhibit is possible because Dave and Bonnie Hutchson donated a huge collection of unique pieces, including the original hand-carved plaster pieces made by "Teddy" Hutchson, donor Dave Hutchson's father. The plaster models were used to create a pattern mold, which in turn was used to create production molds.

"No others are known to exist," Hallstrom said.

Cowboy A is a standing figure that was mounted on a wall plaque, while Cowboy B is rolling a cigarette. That one required four molds; the pieces had to be assembled. Fewer than 50 sets were made, Hallstrom said.

The Hutchson consists of hundreds of items — some that haven't been seen in decades, and then only by pottery industry insiders.

Hallstrom didn't attempt to place a

dollar value on the collection at this time.

"It's really priceless when you think about it," she said. "How do you put a number on things that you never knew existed?"

The last lunch hour piece to come out of the kilns is there. Made by "Teddy" Hutchson, the last employee before the potteries closed its doors, it's a one-of-a-kind tree stump with critters on it and in the grass surrounding it.

Amazingly, she said, the collection includes nearly mint condition brochures and the catalogs from 1877 through the 1967 strike. And one-of-a-kind items that never were mass produced. And books on glazes which the potters used themselves. And stencils for dinnerware. And a hand-written document that tells how many advertising pieces were made between August 1892 and February 1909, plus where

they were shipped.

One collection that is mind-boggling to officials is the actual recipes for stoneware and glazes that were used in the manufacturing process over the years. The foundation is going to be especially careful with these in order to protect the integrity of Red Wing Potteries.

And there are intriguing items such as Charles Murphy's concept drawing of a swizzle stick holder he designed for Hamm's Brewing Co. It never was produced.

"We'll be working on the collection for quite a while — years," Hallstrom said. Members have volunteered to do research and documentation. Eventually, all of the information will be put into a computerized base for everyone to use.




AL'S



ANTIQUE MALL

GRAND OPENING

Our New Location
512 Plum Street
Red Wing, MN 55066
651-388-0592

Hours: Mon.-Sat. 9am to 5 pm; Sun 10am to 5pm
 Extended Convention Hours: 9am to 9pm Wed.-Sat.

Local history center also spotlights Red Wing

By Ruth Nerhaugen
Staff Writer

Some of the oldest and most unique pieces of Red Wing-made pottery will be spotlighted at the Goodhue County History Center during the 2006 Red Wing Collectors Society convention July 6-8.

Museum Director Char Henn said staff will be assembling a special Red Wing exhibit again this year, drawing from its collection.

"We have one of the largest publicly-owned collections," she pointed out. "We have some of everything."

Pieces date back to the very early days of the industry, when John Paul was experimenting with clay. All the developments are represented, from utilitarian stoneware to art pottery and dinnerware. Also included are sewer pipe, paving tile and drainage tile pieces.

Of special interest are the lunch hour pieces.

"Pottery employees got to exercise their creativity" on their lunch hours, Henn said. "They made items that were not available in the product line to take home." Pieces include a bird on a twig and a vase with a bird motif.

The museum has samples of pieces that never were put into production, such as a stoneware water



Red Wing Art Pottery Courtesy of Goodhue County Historical Society

cooler decorated with oak leaves and branches that apparently did not meet the sturdiness test. Also part of the collection are the last couple of plates made at the potteries before it shut down. One even says it's the last plate.

The more mundane side of the business — the production process — is represented by molds, toggles and other items used to make the pottery.

People interested in reading more about the local industry have access to an assortment of paper items, including catalogs, books, histories and a 1955

employee list. In addition, Henn said, museum volunteers conducted interviews with about three dozen individuals as part of a project to record the oral history of the industry.

The project was completed in recent years with the Red Wing Collectors Society, which also has copies of the transcribed

interviews. People interested in reading them now can do so at the museum.

Volunteers talked with office workers, hand painters, production workers, a designer, individuals with strong viewpoints on the labor dispute that related to the closing of Red Wing potteries, Henn said. "We tried to get the whole gamut of those who are left," she said, including some people who researched the industry or had property connections.

What: Goodhue County History Center

Where: 1166 Oak St., Red Wing

When: 10 a.m.-5 p.m. Tuesday through Friday
1 p.m.-5 p.m. Saturday and Sunday

How much: Free to Red Wing Collectors Society members with convention ID during convention

Salt Glazed Pottery



Annual Collectors Firing
Friday, July 7th
Doors open at 8 a.m.

Every Piece will be stamped with our Limited Edition 10th Anniversary stamp. Limited quantity of numbered pieces.

RED WING POTTERY

Zinc Glazed Pottery



- Hand-Turned Miniatures
- Red Wing Pottery T-Shirts
- Collectors Books
- Ask about personalizing our pots

Our Tribute to the Potter's Neighborhood...



- Homemade Baked Goods
- Wholesome Breads
- Breakfast & Lunches
- Coffee - Espresso
- Sebastian Joe's Ice Cream



Old West Main St., Red Wing
651-388-3562 or 1-800-228-0174
Open 7 days a week

Education Day — F

Collecting with "Kuff"

Dave Kuffel

Session III 12:30 - 1:20, Room H201

Session IV 1:30 - 2:20, Room H201

Dave will provide valuable insight into when to buy, what to buy, and what to pay, as well as sharing ideas relating to the mind set of the collector. He will share a number of valuable personal collecting experiences, and some of the unique ways he has used his collection to achieve other goals.

Convention 2006 marks Dave's 27th. consecutive Convention. Dave's Red Wing collecting has primarily focused on stoneware and, most recently, on advertising bee hive jugs, crocks, and butter jars. He also has an interest in Mission style furniture and architecture, Ephraim Faience Pottery and wooden bodied automobiles (woodies).

Dave states that Red Wing - the people, the stoneware, the Convention, and the city have become a significant part of his life. Dave currently serves on the RWCS Foundation Board of Directors which has responsibility for all facets of the Red Wing Pottery Museum, and he encourages all RWCS members to visit and support the museum!

Dinnerware

Terry and Marilyn Moe

Session II 11:00 - 11:50, Room H205

Session III 12:30 - 1:20, Room H205

The seminar is going to be presented by Larry Roshen, John Sagat and Terry Moe. It is

Handpainted Dinnerware of the 1940s including all of the Concord patterns.

Dos and Don't of RW Dinnerware

Dennis Caylor and Sally Pavlak

Session III 12:30 - 1:20, Room H204

Session IV 1:30 - 2:20, Room H204

In this seminar, we will discuss various aspects of dinnerware, including: Where to Buy, Ideas for Beginners, Valuation, Tips on Quality, Tips on Finding Damage, etc. Our goal is to help make informed collectors, resulting in a happy collector with the knowledge that you made the right choice with your purchase.

My name is Dennis Caylor, I live in Genoa, IL. I was born and raised in North Central Iowa. My parents took fall trips along the Mississippi, which meant a stop at the Red Wing outlet store. My interest in Red Wing was nurtured by many visits, while my mother bought dinnerware. I remember seeing a lot of dinnerware stacked everywhere. As I grew up I became more interested in the broken pottery out back across the railroad tracks. The interest stopped upon learning from my father there were snakes out there. It took a while but a number of years later, I started going to flea markets and auctions. My interest in collecting expanded into a 27 year collection. Now my goal is sharing my hard learned lessons, into a Defined Guide, that I use in buying dinnerware.

My name is Sally Pavlak, I was born and raised

in Belvidere, IL. I started collecting Red Wing about 4 years ago. As a beginner collector I had a lot to learn, now I feel like I have learned quite a bit in the selecting and buying process. I picked out two specific patterns to collect Bob White a popular pattern and a little easy to find and Two Step a harder pattern to find. I started out acquiring dinnerware at flea markets and auctions. The auctions I enjoy the best to find accessory pieces I need. I have attended two Conventions and three Mid-Winters. I have met a variety of people and have heard lots of interesting stories about collecting. I try to use the basic guidelines in collecting and as a beginner I feel I may have some useful suggestions that may help others. I find collecting Red Wing very challenging and fun, I meet lots of new people and see lots of new places.

Ebay Tips and Tactics for the Beginning Internet Collector

Chris Osterholz

Session I 10:00 - 10:50, Room H209

Session II 11:00 - 11:50, Room H209

This seminar will cover registering, searching, buying, selling, and delivery. Most of the topics are in an open discussion format, and are more philosophy/tips oriented rather than the "click here" detail.

Chris Osterholz has been collecting for 18 years, through which his collecting taste have changed somewhat, but is still locked into the

stoneware side. Mostly advertising jugs, mugs, & crocks, salt glaze, and unusual or rare items.

Latest RW Dump Finds

Steve Showers

Session III 12:30 - 1:20, Room H203

Session IV 1:30 - 2:20, Room H203

Steve Showers started digging Red Wing stoneware in 1967. His presentation will encompass past and present "finds". Steve has been digging every fall and winter for the past 22 years and has found many interesting items over the years which he will share. A few of his more interesting finds include a five gallon jug from Edmore, North Dakota, a bisque bank from the Chicago expo of 1893, many salt glaze lids, advertising bumper crocks, jugs and bowls. Come see what's new this year from the Dump!

Steve retired in December of 2003 after 40 years with the 3M Company. He digs bottles in the summer and pottery in the winters. He collects items from Goodhue County, Minnesota. He and his wife, Phyllis, live in Welch, Minnesota.

Odds and Ends of Red Wing

Wally Armstrong

Session I 10:00 - 10:50, Room H206/207

Session II 11:00 - 11:50, Room H206/207

In the 90 years the Red Wing Potteries were in business, they produced millions of crocks, jugs, vases and dinnerware not only for their own trade,

Kids View Seminars July 6-7, 2006

Thursday, July 6th

Time	Group 1*	Group 2**
1:00 to 1:50	Make Your Own Stoneware Kids will stamp and glaze a miniature replica of stoneware (the piece will be fired and can be picked up on Friday) Art Room*	Auction Viewing and Grading The donated pieces for Group 2 Auction are available for kids to inspect. Auction rules will be reviewed. Auditorium*
2:00 to 2:50 ***	Auction viewing and selection The donated pieces for Group 1 auction are available for kids to inspect and offer bid for top three choices. Auction rules are reviewed. Silent Auction begins. Fish Pond (Kids 2-6) Auditorium	Make Your Own Stoneware Kids will stamp and glaze a miniature replica of stoneware (the piece will be fired and can be picked up on Friday) Art Room
3:00 to 3:50 ***	Silent auction continued (if necessary) Children are encouraged to stay and watch the bigger kids do real bidding so they can learn how for coming years. Auditorium	Kids View Bidding Auction Begins Houghton Auctions will conduct the auction. Kids will have Red Wing bucks of varying amounts to do "real" bidding on donated items. Auditorium

Friday, July 7th

Time	
10:00 to 10:50	Hats on and Start Thinking - So you want to start a Collection Dave Kuffel will talk with kids about what makes us want to collect. Collectors will share their thoughts on collecting: Jolene McKoon, The Williams Family: Barb, Ari and Bryce. Children attending the seminars are encouraged to talk about their collections. Begin talking about ways to display your collection. Art Room
11:00 to 11:50	Paint a Red Wing Plate - Add it to your collection from other years. Create your own design using what you know and like. Children will paint on real Red Wing dinnerware using their creativity and knowledge mentored by Russ and Sue Johnson and Steve Brown. The plates will be finished with a protective coating and need to dry overnight so they can be picked up Saturday morning in the Commons Area. Art Room
11:50 to 12:30	Lunch Break
12:30 to 3:00	Show Off Your Hats - Create a Display Children will learn how to display their collections from both people who create displays as well as a field trip to the Display Area. It will be a lively time creating group displays that will be available for the membership to see. Children will unwind with some games, refreshments and door prizes. Art Room

*All children meet in the Art Room. **Children will be divided into two groups based on age. ***Starting times may vary.

PARENTS: Your child will be expected to stay in the Art Room or Auditorium for the duration of this activity UNLESS you have given express permission that your child may leave independently.

Friday, July 7, 2006

but also for other companies such as Rum Rill, Hamms Brewing Company and Ernest Sohn. They also had some of the finest designers in the business such as Charles Murphy, Belle Kogan, Eva Zeisel and Teddy Hutchinson, who was their chief mold maker. Wally will show some of the pieces that have survived years of use and poor storage to become very pricey and hard to find.

Wally Armstrong has been a member of the RWCS since 1986 and is a charter member of the Puget Sound Chapter. He was recently elected to president of that Chapter. For the last 10 years Wally has served as the Representative at Large for the RWCS.

Orientation for First Timers

Russ Johnson

Session I 10:00 - 10:50, Room H202

Pottery Design and Creation

Ephraim Potters

Kevin Hicks

Session III 12:30 - 1:20, Room H209

Session IV 1:30 - 2:20, Room H209

Ephraim Faience Pottery was founded in 1996 when Kevin Hicks and a friend found a need to leave a local production pottery and begin making pottery in the Arts & Crafts style and tradition. When researching the time period, they were especially attracted to the work of Grueby and its unique, organic green glaze. They also found that their work has increased in value over time at a higher rate than some of the other pottery's work. Between 1996 and 2006, Ephraim Faience Pottery has experienced steady growth in sales and employees.

Kevin Hicks, owner, founder, pottery and sculptor, a self described "farm boy who likes to play with mud" will present this seminar.

All of our potters have more than 20 years experience throwing, most of our glazers have 10-

20 plus years experience and John Raymond has a Masters Degree in Art. The respect that all of our artists have for nature comes through in the work they create. Our work is collaborative so that each person's strengths can be used to create the best finished piece possible.

Recent Finds & Discoveries in the RW Dump

Dennis Nygaard & Austin Fjerestads

Session I 10:00 - 10:50, Room H201

Session II 11:00 - 11:50, Room H201

Digging continues at the Red Wing stoneware dump. Dennis will be sharing what has been discovered this past year, and he will also be exhibiting some of his better finds which he has not displayed for many years.

Dennis is a long time RWCS member who has not missed a convention. He has been digging in the Red Wing dump for 25 years, often with another digger and RWCS member, Steve Showers. In addition to his dump finds, Dennis collects stoneware fruit jars from all United States potteries as well as pottery from New Brighton, Pennsylvania.

Dennis lives in Hastings, Minnesota with his wife, Virginia, and three sons.

Red Wing 101 and Red Wing 102

Paul Wichert

Linda Krueger

Session II 11:00 - 11:50, Room H202

Session III 12:30 - 1:20, Room H202

Session IV 1:30 - 2:20, Room H202

How familiar are you with Red Wing Stoneware and Pottery? Want to learn more? Red Wing 101 and 102 are geared toward the new collector. Paul Wichert and Linda Krueger will present computer-aided seminars on the history of the Red Wing Potteries, what they produced, what's

collectible and what's not. They will discuss collector trends, an items 'condition' and will provide you with some pointers on what to watch for when you're buying. They will also cover ovals, signatures, and shape numbers, reuse of the molds, as well as various glazes, colors, and color combinations. Red Wing 102 is new this year and is a follow on to the original Red Wing 101 presentation.

An Information Technology professional by trade, Paul Wichert is a long time collector of Red Wing and Advertising Stoneware. An Antique dealer for over 15 years, he has been an active member of the Red Wing Collectors Society since 1992. A contributor to the RWCS Newsletter, Paul recently completed a term on the RWCS 'Vision' committee. He has served with the RWCS commemorative distribution crew since 1993. He has participated as an appraiser at Waukesha Historical Days' celebrations and at the Antique Treasures Expo with the Keno Brothers (Antiques Road Show) in Madison, Wisconsin. Hosted by the Fox Riverwalk Antique Mall, he also has presented the Red Wing 101 seminar for various groups of antique dealers and collectors.

By profession, Linda Krueger is a self employed Interior Decorator in the Twin Cities area. She is also an antique dealer with over 20 years experience and collects mostly stoneware, and occasionally, an art pottery piece or two. A native of Sleepy Eye, MN, she also collects a variety of Sleepy Eye items. An active member of the Red Wing Collector Society since 1989, Linda has served on the commemorative distribution committee continuously since 1993. She is a member of the Gopher Chapter and was a commemorative chair person for 3 years.

RWCS Foundation

Ron Linde

Session I 10:00 - 10:50, Room H203

Session II 11:00 - 11:50, Room H203

The Foundation Board will be doing two educational seminars including Bonnie and Dave Hutchison to be part of these two sessions as they talk about "why" they gave their collection, and Foundation Board members will talk about the Museum, answer questions, and look for valuable input as the Board goes forward with Museum development.

The main purpose of the Foundation is to preserve Red Wing and other American stoneware and pottery for future generations. The displays are a historical reflection of what has happened in Minnesota and the United States during the past century. The museum's purpose is to encourage collecting in those who may not know about the RWCS, as well as to educate those who stop to visit.

RW Newsletter: Past, Present and Future

Rick Natynski

Session I 10:00 - 10:50, Room H205

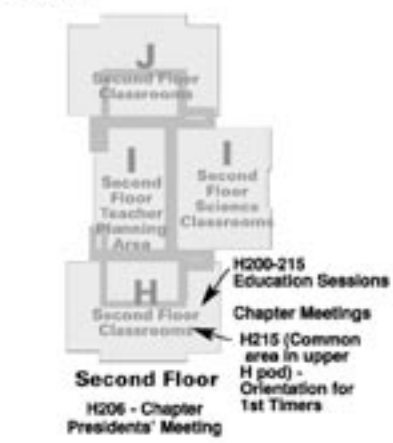
Session II 11:00 - 11:50, Room H204

Rick will be discussing the newsletter and changes that have been made. He will give some tips for persons wanting to submit articles, as well as encouragement to do so. There will be time focused on questions and answers regarding anything and everything about the newsletter. Rick loves to hear ideas and thoughts of members about what can be done to improve the newsletter.

Rick Natynski has been a collector of Red Wing Stoneware since 2000. He is the current editor of the Official RWCS Newsletter. Rick lives in Brookfield, WI with his wife Elsa. He is an avid collector of Salt Glaze and Red Wing Advertising pieces.

Education Seminars • Friday, July 7, 2006

	H-201	H-202	H-203	H-204	H-205	H-206/207	H-209
Session I 10:00 to 10:50	Recent Finds & Discoveries in the RW Dump Dennis Nygaard & Austin Fjerestads	Orientation for 1st Timers Russ Johnson	Red Wing Foundation Ron Linde & Foundation Board	Das and Don'ts of RW Dinnerware Dennis Caylor & Sally Pavlak	Newsletter Past Present Future Rick Natynski	Odds and Ends of Red Wing Wally Armstrong	Ebay Tips & Tactics for Collectors Chris Osterholz
Session II 11:00 to 11:50	Recent Finds & Discoveries in the RW Dump Dennis Nygaard & Austin Fjerestads	RW 102 Paul Wichert & Linda Krueger	Red Wing Foundation Ron Linde & Foundation Board	Newsletter Past Present Future Rick Natynski	Dinnerware Terry & Marilyn Moe	Odds and Ends of Red Wing Wally Armstrong	Ebay Tips & Tactics for Collectors Chris Osterholz
Session III 12:30 to 1:20	Collecting With "Kuff" Dave Kuffel	RW 101 Paul Wichert & Linda Krueger	Latest RW Dump Finds Steve Showers	Das and Don'ts of RW Dinnerware Dennis Caylor & Sally Pavlak	Dinnerware Terry & Marilyn Moe	Odds and Ends of Red Wing Wally Armstrong	Pottery Design and Creation Ephraim Potters Kevin Hicks
Session IV 1:30 to 2:20	Collecting With "Kuff" Dave Kuffel	RW 102 Paul Wichert & Linda Krueger	Latest RW Dump Finds Steve Showers	Das and Don'ts of RW Dinnerware Dennis Caylor & Sally Pavlak			Pottery Design and Creation Ephraim Potters Kevin Hicks



RWCS Chapter News

NEW Chapter to be recognized at RWCS Annual Business Meeting

INDIANA CHAPTER

The Indiana Chapter will be officially recognized upon ratification at the RWCS Annual Business meeting on Friday, July 7. During the meeting the Chapter will receive their chapter banner to be hung at future Convention. The Chapter took form and elected their officers this spring as a result of the initiative of the Indiana members with the assistance and guidance of Jerry Endmann, Representative at Large, and other members. Here are the details on the Indiana Chapters upcoming meetings and events.

Indiana Chapter contacts are:

John & Sue Ingwersen (Chapter president)
11141 Echo Grove Lane, Indianapolis, In. 46236

317-823-8543 / email: JHenryIng@aol.com

Sue Cox (Chapter Secretary/treasurer)

2210 Beevester, Indianapolis, In. 46260

317-872-0815 / countryquest@sbcglobal.net

Our next meeting is scheduled for Saturday, Sept. 30th, at the home of Cleo and Shirleen Dimmitt in Monticello, In. 47960. Anyone interested in joining the chapter is welcome to attend. Please contact Sue or John for additional information.

ARIZONA CHAPTER

The Southwest Redwings (SWRW) Club, founded in 1982, is an organization which promotes the collecting of Red Wing and American pottery. The SWRW Club currently has 48 members and belongs to the Red Wing Collectors Society Inc., which was founded in 1977 and has members in 50 states plus Canada. Membership is open to all persons interested in collecting American pottery and stoneware.

The highlights of our local Arizona Chapter are our educational monthly meetings, guest speakers, annual picnics, social events, Christmas dinner and party, and other special events.

A special commemorative piece is made each year for our SWRW. These highly sought after pieces are made in limited quantity and are available only to club members.

The SWRW also publishes a monthly newsletter, "ON THE WING" (except for June, July and August, as there are no club meetings during those months). Each issue contains feature articles, information on new finds in collecting, pictures of its members with their raffle prizes or a brag piece from previous meetings, listings of local and out of town antique shows and more.

Membership fee to the Southwest Redwings Club is \$12.00 per year, one membership per person.

Current officers are:

President Lyle Tuttle

11662 Pincushion Ct., Surprise, AZ 85374

Vice President David Nelson,

16 West Wood Drive, Phoenix, AZ 85029

Secretary Louise Gass,

16412 W. Monteverde Lane, Surprise, AZ 85374

Treasurer Gene Stanley,

1501 West Ruth Ave., Phoenix, AZ 85021

Historian Kent Williamson,

3104 East Broadway, #328, Mesa, AZ 85204

Board Members: (those above) and

Bev Winshell,

432 South 113 Place, Mesa, AZ 85208

Sally Stanley,

1501 West Ruth Ave., Phoenix, AZ 85021

Louise Schleich,

6412 Chesterfield Court, Lincoln, NE 68510

Wally Spence,

432 South 113 Place, Mesa, AZ 85208

Membership Chair Kent Williamson,

3104 E. Broadway, Rd., #328, Mesa, AZ 85208

Newsletter Editor Ed Gass,

16412 W. Monteverde Lane, Surprise, AZ 85374

CANNON VALLEY (MN) CHAPTER

Come check out our Window Display at Josephsons Clothing Store during Convention Week. See what we have cooked up in the Kitchen.

The Cannon Valley Chapter has converted their printed newsletter to on line e-newsletter to spread the news about Chapter events, meeting, and other up coming events. The Chapter meeting are monthly on the first Tuesday. Their next meeting will be August 1 at Trout Scream Cafe' in Welch, MN and their September meeting is Annual Pot Luck. All guest are welcome at any Cannon Valley Chapter meetings and see what we are up to. We are looking for new members sharing in the fun and collecting close to the pottery home.

Membership includes people from Red Wing, Cannon Falls, Northfield, and other surrounding communities.

Connie Kolberg, President

26251 Missville Trail, Cannon Falls, MN 55009

507-263-9245

ckolberg@citlink.net

GOPHER (MN) CHAPTER

August meeting will be held Saturday, August 12 at 1:00 pm at the Minnesota Landscape Arboretum. September meeting will be Saturday, September 16 at 1:00 pm at Darna & Jay Juergens home. The Secretary and Treasurer respectively. 952-881-1676. November meeting will be held on November 11 at 1:00 pm at the LeDac Mansion in Hastings, MN. For more information on the November meeting or any other questions contact Dennis Nygaard at 651-437-7943.

Anyone interested in joining the Gopher Chapter should contact:

Jay Juergens, Membership

10666 Vessey Road

Bloomington, MN 55437-2765

952-881-1676

jayjuergens@mac.com

GOLDEN STATE RED WING CHAPTER

The Golden State Red Wing Chapter organized as a group of stoneware collectors in September of 1986. We were then officially ratified as an official state chapter of The Red Wing Collectors Society at the July 1987 Business Meeting in Red Wing. We are a club with 75 members, mostly in Northern California, but we do have members throughout the state, with members also in Southern California. Officially we meet four times a year: the 2nd Saturday in September, December, and March; and the 1st Saturday in June. Our meetings are usually held in the home of one of our members in Northern California. Annually in October we take a 'road trip' to Los Angeles and meet with our Southern California members, take in some shops, and do the Rose Bowl or Long Beach Flea Market. Both are excellent excuses to make the trip. This year it will be the Long Beach weekend.

The Golden State Red Wing Chapter produces a commemorative each year for its members. The 2005-2006 commemorative piece is a miniature Doctor's bag. Currently, membership is restricted to California residents only, but we allow continuous membership to members who have moved out of the state. Each member family receives our newsletter,

which is published quarterly, just prior to each meeting, and covers the previous business meeting, and items that were brought to the meeting for discussion. We provide complimentary copies to other state chapters and the board of directors. We have had guest speakers on pottery or stoneware at our meetings, and we have taken 'field trips' to an operating potter, and to a specialty tile manufacturing company.

We take on other projects as well. For the 1998 Red Wing Convention we introduced a giant size, 1,000 piece Red Wing jigsaw puzzle consisting of all Red Wing, from salt glaze to art pottery. For the 2000 Convention we produced a 500 piece jigsaw puzzle with Red Wing Cookie Jars. For the 2002 Convention we again produced a 1000 piece puzzle of all types of Red Wing, again from salt glaze to art ware. To produce the image for the 24"x30" jigsaw puzzle our club members gathered and arranged over 215 pieces of Red Wing from their collections, and it was truly a club effort. There is something for everyone in each of the puzzles. Each puzzle was also made as a poster, identical to the puzzle.

Our chapter was asked to produce the 'official' Red Wing Collectors Society button for the 1999 convention. We created a 'real stoneware' button that was the talk of the convention, and sold out the first day of sales.

Bruce Cameron of Castro Valley is our current president, Ralph Nelson of Visalia is our vice president, Mike Robinson of Stockton is our secretary/treasurer, and Denise Nelson of Visalia is our historian. We will have elections at our September 2006 meeting.

We can be reached by mail at: Golden State Red Wing, PO Box 690, French Camp, CA 95231; email to GSRedWing@aol.com; and you can visit our web site at www.goldenstateredwing.com Club information is provided on our web site. If you ever find yourself in SUNNY California in time for one of our meetings, feel free to drop in. Visitors are ALWAYS welcome! If you need information, or the location of our next meeting please call our secretary Mike Robinson at (209) 463-5179 evenings, (800) 700-7915 days, email, or send a FAX to (209) 466-7918.

ILLINOIS CHAPTER

The Red Wing Collectors Society Illinois Chapter was chartered July 9th, 1999. We are in our 6th year as a Chapter. Membership includes members from 7 states (Illinois, Wisconsin, Iowa, Minnesota, Missouri, Nebraska, and Indiana). We have our meetings in the Spring and the Fall of the year. A newsletter is published twice a year, the month prior to our meeting. Our newsletter editors are Connie and Tony Peacock, East Dubuque, Illinois. The meetings consist of a potluck lunch at a members home (usually 25 - 35 members in attendance), a business meeting, items for sale, trade and show and tell. Membership dues are \$10.00 per household, and you must be a current member of the Red Wing Collectors Society to be a member of the Illinois Chapter. We have a commemorative each year. This year, commemorative is an Illinois advertising chicken feeder for McConnell, Illinois. Our commemorative committee are Connie and Tony Peacock, East Dubuque, Illinois, and Bridget Hoolahan (Art Work), Arlington Heights, Illinois. They do an outstanding job on our commemoratives. Our secretary/treasurer is Lorraine Osterholt, Rockton, Illinois. Anyone interested in joining the Illinois Chapter, please contact Marv or Lorraine.

Marv Osterholt:

P.O. Box 62, Rockton, IL 61072

1-815-624-6201 / Email: osterstuff@aol.com

IOWA CHAPTER

The highlight for the present year was again hosting the Mid Winter GetTogether in Des Moines, Iowa. Again this year it was a great success as a record attendance was set with over 400 Red Wings attending the three day festivities at the Four Points Sheraton. The usual buying and selling took place throughout the three days and of course the Iowa Chapter sent everyone home happy from

"Continuing the Tradition"

"Welcome Red Wing Collectors"



"2006 Collectible and 2006 Christmas Ornament Unveiling"

Come to see our 2006 unveiling at 10:30am and enjoy our locally made "Meatheads" brat and Coke at our annual "brat feed" Thursday, July 6, 10am to 3pm



RED WING STONEWARE CO.

4909 Moundview Drive
651.388.4610

Highway 61 North
800.352.4877

Log onto our Website www.redwingstoneware.com

"Retail Salesroom & Production Viewing Hours"

Monday - Saturdays 9 am - 6 pm Sunday 10 am - 5 pm

Factory Tours Weekdays 10:30 am & 1 pm • Group & Bus Tours Welcome

Retail Salesroom • Personalized Stoneware • Factory Seconds

the Iowa Breakfast we serve every year.

Our two meetings that we hold in the spring and fall were very successful again this year with good attendance at both meetings. We had the usual "Show and Tell" activities as well as the silent auction.

This year we have come up with a fund raiser for the RWCS Foundation. What the Iowa Chapter cleared with the Board and the Foundation was a challenge with each chapter donating one of their commemoratives at the Mid Winter Get-Together. We held a silent auction with the money being donated to the foundation. The final figure was \$1000.00 The idea originated from Sue Dvonak of Chelsea, Iowa. Thanks Sue.

Our official business meeting was held at Red Wing during the time set aside for meetings. The highlight of the meeting was the railroad job on the election of officers as all officers were given another two year term. Wayne H. Burk is president, Elaine Fastenau - vice president, Cindy Simon - secretary, Lowell Reed - treasurer and membership chairperson and Larry Aukhus and Bob Gerking - commemorative chairpersons. Dues are very reasonable at \$2.00 per family.

Wayne Burk, President, Iowa Chapter
304 Allamakee St., Waukon, IA 52172
563-568-4387 / wburk@salamander.com

LEWIS & CLARK CHAPTER

The Lewis & Clark Chapter has had a great year. Our first commemorative was distributed last fall and a 2006 commemorative will be available in October. Our fall meeting will be October 7, at the home of Gary & Judy Kresdt in New Salem, North Dakota. Frank & Lorraine Schank have done an outstanding job on our chapter newsletter! We have enjoyed getting to know our fellow collectors and have seen some awesome collections. We always welcome new members to our North Dakota/Montana chapter.

Scott Heide will be stepping down as President at the July meeting and Con Short will be sworn in as the new President. Their fall meeting in October will be in New Salem, ND and the chapter commemoratives will be handed out at that time.

President: Scott Heide
52 Brockway E. Road, Circle, Montana 59215
edwingfarmer4@yahoo.com
Vice-President: Con Short
Box 14, Beach, ND 58621
cshortnd@men.net
Secretary: Shiela Schumacher
4460 West Heart Place, Bismarck, ND 58504
schumacher4460@extendwireless.net
Treasurer: Doug Grenz
4140 Selkirk Road, Bismarck, ND 58503
dsg7783@btinet.net

NEBRASKA CHAPTER

The Nebraska Redwings Chapter was chartered in 1997. Our purpose and mission is to research and share the history of pottery in America, to establish a network of collectors, to encourage the buying, selling, and trading of stoneware and pottery, to enhance friendships among collectors, and to educate and recruit new members for the Chapter and the Red Wing Collectors Society. All meetings are held in Nebraska and we meet four times a year--on the first Saturday in March and June at various Nebraska cities, and on the first Saturday in October in Lincoln. The place, date and time for our annual Holiday/Meeting/Party are determined at the October meeting.

We currently have 62 members. Annual dues are \$10, payable to the Nebraska Redwings, 4040 Teri Lane, Lincoln NE 68506. Dues are due at the October meeting and must be paid by December 31 to retain membership for the following year.

Commemorative eligibility requires attendance at two Chapter meetings, or attendance at at least one Chapter meeting and attendance at either the RWCS Convention or MidWinter Get-Together, or attendance at one Chapter meeting and completion of a Board of Directors approved educational or organizational activity. Members are required to "sign in" at each of our meetings, and with their commemorative order are later required to complete and submit a commemorative qualification statement by December 31 of each year.

Newsletters are published and mailed to members

following each meeting to inform members of the time and place for the next meeting, to include the minutes from the meeting, to pictorially recap the activities of the meeting, to provide a forum for educational items, and to make announcements, etc.

The officers and committee chairpersons make up the Board of Directors.

Steve Splittgerber, President,
Nebraska Chapter RWCS
3901 Normal Blvd, Suite 203
Lincoln, NE 68506-5250
402-770-7600 / email: splittger@hotmail.com

PUGET SOUND CHAPTER

Founded in May of 1988, the Puget Sound Chapter is primarily a Western Washington group, with a current membership count of 30. We meet four times annually (Dec., March, June, Sept.). Our members take turns hosting the meetings in their homes. A meal and social time follow our 1-2 hour business meetings.

A highlight of our meetings are the educational presentations, which are frequently about (but not limited to) Red Wing products. Our members are diversified in their collecting interests.

Another highlight is our Show & Tell segment, for which all of the participants receive a free raffle ticket. The raffle is held at the conclusion of each meeting, and the raffle prize is most often a Red Wing piece donated by the host/hostess. All of the proceeds from the raffle ticket sales are deposited into our chapter treasury.

For further information about the Puget Sound Chapter, please contact any of the following individuals:

Wally Armstrong/President-Elect
24129 Old Owen Road, Monroe, WA 98272
e-mail: armst101@aol.com

Ron Chenault/Treasurer
4619 34th Avenue Ct. NW
Gig Harbor, WA 98335-8238
e-mail: wine-nut@att.net

If you wish to submit an item for inclusion in our Chapter newsletter (which is published prior to each meeting), please contact:

Reg Doty/Newsletter Editor
e-mail: reginakk3@centurytel.net

ROCKY MOUNTAIN (CO) CHAPTER

Glenn Christensen
2505 Falcon DR., Longmont, CO 80503

SIouxLAND CHAPTER

Siouxland Redwings was officially chartered in July 2000 and has members in South Dakota, Iowa, Nebraska, Minnesota, and Wisconsin.

Siouxland Redwings meet in Spring and Autumn in South Dakota, during the Red Wing Collectors Society Summer Convention, and during the RWCS Mid-Winter Get-Together. Our members have organized two Spring public auctions and three Autumn Progressive Events where we visit host homes and enjoy a picnic afterwards. We have several successful dump-diggers in our group. We will again host the Siouxlanders Hospitality Room #126 at the 2007 MidWinter Get-Together. Members are anxious to see the 6th Siouxland Commemorative when it is first unveiled in July 2006.

Current Officers:
PRESIDENT: GLENN E. BEALL
Logan, Iowa
(712) 644-2256 / Email: gbeall@loganet.net
VICE PRESIDENT: MIKE HEADRICK
Flandreau, South Dakota
(605) 997-3656 / Email: mce6@mcisweb.com

2006 COMMEMORATIVE COMMITTEE:
Chairman: PHIL SWENSON,

Rochester, Minnesota
TOM & JO LANDIS, Garretson, South Dakota

TREASURER & NEWSLETTER CHAIR:
MICHELLE HEIBERGER
Dell Rapids, South Dakota
(605) 428-4323 / mheiberger@siouxvalley.net

SECRETARY: JULIE ELLEN BEALL
gbeall@loganet.net

NEWSLETTER EDITOR:
LAURA L. BEALL

lbeall@asf.edu

NEWSLETTER FEATURES:
MARY LYNN HEADRICK
mce6@mcisweb.com

HISTORIANS:
DELBERT & BERNICE DUNCAN
Sioux Falls, South Dakota
(605) 334-6440

TRAILS WEST CHAPTER

The Trails West Chapter RWCS of Kansas and Missouri chartered in July of 2002. At present we have 76 active members and add new members at each meeting. We produce an annual club commemorative; our meetings are quarterly with a newsletter following each meeting. Our Spring and Fall meetings are held in the homes of members and our other two meetings are held at the MidWinter and Summer RWCS Conventions. So please look for the announcement of our Trails West Chapter Meeting time and place at Convention. We ALWAYS welcome new members. It's not just Red Wing, it's about the friendships we've found through Red Wing.

Thanks and we'll see you at convention,
Kay Salisbury, President
Trails West Chapter (MO/KS)
31025 S. Croco, Melvern, KS 66570
785-549-0116 / email: barn40@earthlink.net

WISCONSIN CHAPTER

Pete Pavloski, President
1411 Rapids Trail, Neokosa, WI 54457-8688
715-325-3715 / Email: ptpav@hotm.com

WOLVERINE CHAPTER

The year since the 2005 RWCS Convention has been a year of firsts for the Wolverine Chapter.

Although we had been meeting as a group for a year, this was our first year as an officially chartered chapter. President, Terry Speedy, received our charter at the 2005 Convention. This year saw the commissioning of our first commemorative, which will be delivered at Convention. This first commemorative is a replica of a "bullet jug" with Upper Peninsula advertising. All members of the Chapter had the opportunity to purchase this piece and will be able to purchase future commemoratives. Convention sees our first serious fund raising project. We will have static (no glue) window clings with the RWCS logo for sale. Displaying the logo on our vehicles, windows, etc. will show our pride in this organization and draw attention to it.

The Wolverine Chapter meets twice yearly at members homes and at Convention. Annual dues are \$15 for a family membership and \$10 for an individual. All Michigan members of the RWCS are invited to join us. While each business meeting is a necessity, fellowship and good food at the potluck lunch seem to be what draw members back each time. The diversity of our membership makes for an interesting and informative time. We may not have organized learning programs, but we all learn from each other. To quote a much overused phrase, "experience is the best teacher" and many of our members have a lot of experience.

President, Terry Speedy
5079 S. Seymour Road, Swartz Creek MI 48473
810-938-3228 / email: thespeedys@tcwireless.us
Secretary/Treasurer, Charlotte Ackerman
1256 East Chippewa River Road
Midland MI 48640-8392
989-832-2527 / email: chardave@charter.net
Commemorative Committee
Candy Hirschlieb, Judy Corkins, Sue Speedy

"The food is great and the staff is wonderful."
- Bob Jagusch, Resident

"Having dad at Potter Ridge is just like home."
- Pat Valtakis, Family Member

"I love the conversations and stories during lunch."
- Kim Tredup, Staff



Where caring makes the difference!

WELCOME COLLECTORS!

There is a difference in assisted living communities and you'll find it at Potter Ridge. Nestled among the bluffs of Red Wing, this wonderful new assisted living community will have the services and amenities that area seniors haven't seen before!

Potter Ridge will offer both health related and personal related services that will help them stay independent and have a choice in their care and lifestyle.

wtohdevelopment.com

WELCOME HOME
MANAGEMENT

Potter Ridge

Assisted Living Community

(651) 388-1546

1971 Neal Street
Red Wing, MN



One-of-a-kind gravestones honor potters' families

What: Red Wing-made cemetery vases, urns and gravestones
Where: Oakwood Cemetery, located at the end of East Avenue
When: Cemetery open 7 a.m. weekends, 8 a.m. week days
Directions: Drive up the steep roadway, entering on Summit Avenue, and proceed toward the cemetery office; turn left (north) on Phelps Street and check both sides of the road

By Ruth Nerhaugen
 Staff Writer

Red Wing crocks and jugs, Red Wing vases and dinner ware, Red Wing lamps and ash trays — all were a part of everyday life for local residents.

That connection existed throughout their lives — even to the grave for many who ended up buried at Oakwood Cemetery.

Oakwood, established by the city in 1854, is a historic place. Many of the town's most famous residents chose to make it their final resting place, including the wife and son of the Rev. Joseph

Hancock, who came to teach in the missionary school during that era.

The Red Wing Pottery factories produced urns and vases for use on lawns and in cemeteries. Early catalogs including Union Stoneware Co. show a small variety of styles. Some of them can be found yet today at Oakwood.

Of even more sentimental interest are the one-of-a-kind gravestone markers created by people in the clay industry for their loved ones.

CEMETERY *continued on page 19*



Red Wing Sewer Pipe was used to create gravestones that were personal family remembrances. Several of them can be found in Oakwood Cemetery. — photo by Kevin Macdonald



GREAT CHICKEN Dinners & Buckets

- BURGERS & FRIES
- SANDWICHES
- WRAPS
- SALAD BAR
- CONES
- SHAKES
- SUNDAES




BREAKFAST SPECIAL \$4.95
 Two eggs, toast, choice of meat, & hashbrowns.

A Proud Sponsor of the Potter's Convention

Randy's

Hwy 61, Downtown Red Wing



Summer Fun over on the "Island"

We have awesome Seafoods • Steaks Pastas • Sandwiches and try our famous jerk foods.

Sit back & relax
 Watch the barges & boats go by

**Riverside Seating
 Awesome Food
 Live Entertainment**

Mark your calendar & come back for
 Blues Fest - July 9th
 Reggae Fest - July 30th

715-792-2417
 Open Year-round • Carry Out Liquor • Docks
 Just across the river from downtown Red Wing
 N673 825th St., Heger City, WI

Country Side Antique Mall

31752 65th Avenue
 Cannon Falls, MN 55009
 507-263-0352

20 miles west of Red Wing
 Hwy. 19 to Cannon Falls stoplight
 then one mile south.

Two floors of antiques and collectibles. Lots of Red Wing stoneware, dinnerware and art pottery.

55+ DEALERS

Monday - Saturday 9:30-5:30
 Sunday 11:00-5:30

Check out our website at:
www.csamantiques.com

SPECIAL CONVENTION HOURS
 Wed.-Thurs.-Fri.-Sat.
 July 5-6-7-8 • 8 to 8
 Sun. 9-5:30

Western Stoneware 1890-2006

Article Submitted by John Tremble
Co-Commemorative Manager

On a bright sunny day late in May this year, I find myself driving from Galesburg to Monmouth, Illinois, probably for the last time. During the drive west I found myself reminiscing about the day my wife Holly & I were introduced to the fine people at Western Stoneware by Larry and Kathy Roschen. After meeting the management and staff of Western Stoneware just six years ago, it became clear to me that this was what industrial pottery production must have been about when Red Wing Union Stoneware was at its peak. Western Stoneware was a business that produced good products at a low price in mass quantity. In 2000, Western was churning out 1,000,000 crock pot inserts for Rival and employing 200 workers; in 2005; the work force was down to 60 with most production being specialty orders.

What we needed as a Collectors Society was mass production, a low price and good quality for our Convention Commemorative. Sometimes the quality was an issue, but the effort was always there from the production staff. And when business was good, the Collectors Society was seen as a welcome break in the monotony of producing crock pot after crock pot, bean pot after bean pot and cheese crock after cheese crock. The design and production staff was willing to work with metal in the production of the ball lock jars, hand sponge 7,000 bowls, apply decal after decal and wipe off untold quantities of brushware glaze the last six years of our commemorative.

As a Society whose values and goals are to support the production of stoneware and pottery in America, we have lost one of the great stoneware companies just before its 100th anniversary of the combination of ten family owned potteries that were scattered throughout Illinois, northeast Missouri and southeast Iowa. Western Stoneware continued to the end to be located near a huge clay deposit with very similar characteristics of the clay used by the Red Wing factories. They



The plant with piles and piles of newly broken molds. - Photo courtesy of John Tremble.

bought their glazes from commercial vendors, but the base of all products was the Mississippi River Valley clay mined from its original source site. This common clay used at both Western and Red Wing is probably why Western pieces have a very similar feel as those produced in Red Wing.

At this time, this venerable institution appears to be closing its doors with the last production run being the 2006 Red Wing Collectors Society's commemorative. We even had the last piece signed for us by our long time friends. As of this writing, the plant and its assets were scheduled to go to Auction. Perhaps stoneware will yet again be produced in mass quantity in Monmouth should insiders looking to continue the business be successful in acquiring the business.

For me, it was a sad day as I said good bye to friends, saw the drying racks empty, the kilns open and unused and most impactfully the piles and piles of newly broken molds that once produced bowls, jugs, crocks, dinnerware and bean pots.

RED WING COLLECTORS SOCIETY INC. COMMEMORATIVE INFORMATION

1977	Salt Glaze Crock	250
1978	Common Jug	350
1979	Butter Churn	400
1980	Sponge ware Bowl	400
1981	Brown-top Jug	750
1982	Cherry band Mug	697
1983	Stone Mason Fruit Jar	1,026
1984	Salt-glazed Cooler	1,161
1985	Ice Water Cooler	1,750
1986	Acid Proof Measure	1,982
1987	Red Wing Ashtray	2,328
1988	Pompeii Plate	2,600
1989	Gray Line Pitcher	2,682
1990	Fancy Jug	3,540
1991	Pantry Jar	3,551
1992	North Star Jug	4,260
1993	Chicken Fountain	4,819
1994	20-lb Crock	5,660
1995	Giraffe Planter	6,186
1996	Cookie Jar	7,175
1997	20# Salt Glaze Crock	7,508
1998	Blue Iris Pitcher	7,564
1999	5 Gal. Kover Weight	7,444
2000	Hamm's Pitcher	7,190
2001	Sponge Bowl	6,901
2002	5 gal. Ball Lock Packing Jar	6,888
2003	Leaping Pegasus figurine planter	6,089
2004	Brushware Vase	5,790
2005	Red Wing Self Draining Jar	5,065

'Red Wing Retro' spotlighted in St. Paul museum

ST. PAUL — A colorful snapshot — more like an entire scrapbook — telling the story of Red Wing Pottery is on display July 1 through Dec. 31 at the Minnesota History Center.

"Red Wing Retro: Extraordinary

Pottery, Everyday Life" provides an overview of more than 100 years of a signature Minnesota company that once was the largest pottery company in the United States.

The exhibit is a unique opportunity not only to see the dizzying variety of ceramics the company produced, but to see those pieces in the context of their actual uses. There is something for fans of the homespun crocks and jugs Red Wing began making about 1878, the popular dinnerware of the post-war period, and the decorative art ceramics.

Marcia Anderson, curator of the exhibit, said she found three aspects of "Red Wing Retro" particularly interesting:

"First, the exhibit highlights the incredible variety of ceramics produced by the Red Wing Potteries," she said. "It also illustrates the pottery's role in the lives of everyday Minnesotans, from canning and preserving, to serving and eating food, to purely decorative purposes.

"But perhaps most important, it highlights a company that is not only an essential part of Minnesota's heritage and has been a player in the state for more than 100 years, but is also notable for its innovation in the face of a changing marketplace, and continues in business today."

Indeed, while Red Wing Pottery has long been a favorite of collectors, it has seen a resurgence of interest as younger people rediscover classic "mid-century modern" design, Anderson said.

Patterns such as Town and Country by Eva Zeisel are ageless, with their clean lines and appealing shapes, while those by Charles Murphy are notable for their cheerful and distinctive hand painted motifs that



Smart Set cup and saucer - Pattern first produced in 1955. The Smart Set pattern was designed by Charles Murphy and represents Red Wing at its most fabulous. The classic 1950s design remains popular with collectors.

reflect the spirit of the 1940s and '50s, museum officials said.

"For instance, (Murphy's) Bob White design — the best-selling pattern in the company's history — was featured as a prop in a Playboy centerfold in February 1956." Produced from 1956 to 1967, the Bob White dinnerware originally sold at \$59.95 for a 45-piece service for eight.

"Red Wing Retro" features hundreds of pieces from the historical society's growing collection of Red Wing stoneware, artware and dinnerware. Several hundred pieces from the collection plus pieces on loan from private

collections will be on view for six months. Funding was provided by the Red Wing Pottery Co.

The exhibit has many facets to explore:

- An early 20th century farm kitchen with examples of stoneware used in the storage, preservation and distribution of food and beverages, including the process of brining cabbage for sauerkraut.
- A timeline highlighting important dates in the company's history, using objects, photographs and documents to illustrate its evolu-



Decorator vase 1959

This Charles Murphy-designed vase has a beautiful silver green crystalline glaze and reflects the popularity of abstraction and primitivism in the decorative arts of the late 1950s and early 1960s. While best known for stoneware and dinnerware, Red Wing also produced artware like this which became an important part of production during the middle decades of the 20th century.

What: "Red Wing Retro: Extraordinary Pottery, Everyday Life"

Where: Minnesota History Center, 345 Kellogg Blvd. W., St. Paul

When: 10 a.m. to 5 p.m. Monday through Saturday plus Tuesday evenings; noon to 5 p.m. Sunday, July 1 through Dec. 31.

How much: Admission is \$8 for adults, \$6 for seniors and college students, \$4 for ages 6 to 17.

Information: (800) 657-3773, (612) 296-6126, or Web site www.mnhs.org.

ing focus. The discovery of substantial natural clay bodies near Red Wing by German potter John Paul in 1861 is cited as a critical factor in establishing the industry.

- A wall of 50 hand-painted dinner plates and vitrines illuminating the colorful finishes and the multiplicity of forms found in the glazed artware, with a display of winged crocks from 2 to 60 gallons spiraling toward the ceiling. Some of those crocks are on loan from the Red Wing Pottery Museum.
- A selection of film clips depicting the use of dishes in everyday life and filmed scenes from the Red Wing factory before it was shut down in 1967.
- Period kitchen and dining room scenes displaying Plum Blossom and Bob White pieces in their natural habitat.



Dinner plate: Bob White pattern, designed by Charles Murphy, produced from 1956 to 1967. Vase: Earthenware vase with matte light blue glaze, 1943. Crock: Four-gallon Red Wing stoneware crock, circa 1890.

RETRO continued on page 18

Welcome Collectors!

Red Wing
CORNER DRUG
401 West Third (651) 388-3521

and

Red Wing
CORNER MEDICAL PHARMACY
701 Fairview Blvd. (651) 267-2422

"Service with a Smile"

LIBERTY'S RESTAURANT & LOUNGE



Decor of Red Wing Yesteryear
Welcome Collectors!
Open Daily 8 a.m.

Serving Breakfast, Lunch & Dinner Since 1975

Featuring Sandwiches, Pizza, Steaks, Seafood, Mexican, Italian and American Cuisine.

Online Menu
www.libertysonline.com
Free Local Delivery

388-8877

Free shuttle service to and from local motels

3rd & Plum St. Downtown Red Wing

Falconer Vineyards Winery Welcomes the Red Wing Collectors Society



Saturdays 10 a.m. - 6 p.m.; Sundays 12 - 5 p.m.
Collectors Week Daily 12 - 5 p.m.
651-388-8849

Wine tasting \$4.00 per person

Falconer Vineyards Winery
3572 Old Tyler Rd., Red Wing, MN 55066
651-388-8849 Wine@FalconerVineyards.com
www.FalconerVineyards.com

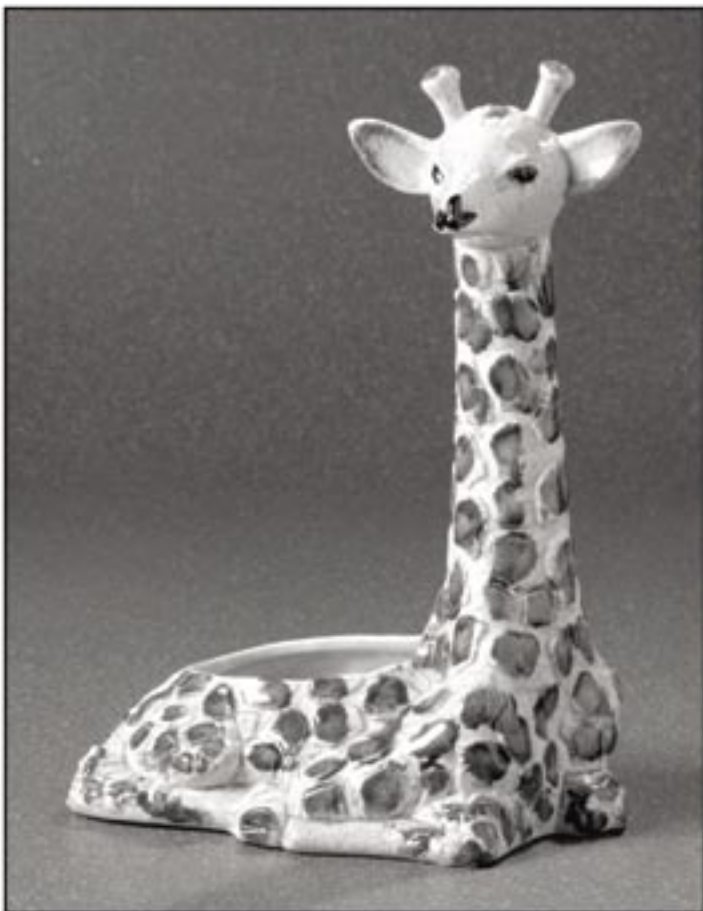
Releasing our new Northern Wine Blend
NORTH STAR RED



Bring a picnic lunch and enjoy the scenic vineyard in one of Red Wing's picturesque valleys.



Retro *continued from page 17*



Giraffe planter
1964

This planter is one of many animal-shaped decorative objects produced by Red Wing. Others featured donkeys, fish, owls, butterflies, deer, pigs, cows, horses, dogs, frogs and swans.

- A children's play area with dishes mimicking some of Red Wing's dinnerware patterns in a kitchen setting to encourage kids to use their imaginations.

The Minnesota Historical Society is a nonprofit educational and cultural institution established in 1849 to preserve and share Minnesota history. In addition to the museum exhibits, the society fulfills its role through its libraries and collections, historic sites, educational programs and book publishing.

The History Center is located at 345 W. Kellogg Blvd., St. Paul, phone (651) 296-6126 or (800) 657-3773. For more about "Red Wing Retro" and the historical society, check the Web site www.mnhs.org and click on exhibits. The site also provides information about books on Red Wing pottery which are available in the Museum Store and the online store.



Bob White pitcher - Pattern produced 1956-1967

The Bob White dinnerware pattern was Red Wing's bestseller and was designed by Charles Murphy. When it was introduced in the mid-1950s, a 45-piece set with service for eight was \$59.95. Its popularity may have been jump-started when it was featured as a prop in Playboy's February 1956 centerfold.

"Thank you for letting us be your fresh floral and garden center experts for 120 years."

Welcome Collector Society Friends!

A warm welcome to all the Red Wing Collectors Society members.

Enjoy your visit to Red Wing!

Dave & Diane Hallstrom



Downtown Shoppe • 317 Bush Street • 388-7178
Greenhouses • 785 Hallstrom Drive • 388-7173
www.hallstromsflowers.com

Welcome Collectors!

- Breakfast served all day
- 55 plus special
- Burgers
- Delicious dinners
- Full service Bakery



812 WITHERS HARBOR DRIVE
RED WING • 385-0783
www.perkinsredwing.com

WELCOME COLLECTORS

COME SEE OUR
RW POTTERY!

*Echo's
of the
Past*



ANTIQUES

N1658 County Road C

Bay City, Wisconsin

715-594-3536

Take a trip down memory lane. Browse in a charming cottage full of unique items from the past. Afterwards relax by the garden while sipping tea. Open May thru October. Directions: Highway 35 to County C. Shop is located 1/4 mile north of Highway 35.

Cemetery *continued from page 14*

Gary and Bonnie Tefft detail this practice, including a number of pho-



Vases produced by Red Wing for lawn and cemetery use can be found yet today in Oakwood Cemetery. — photo by Kevin Macdonald

tographs, in their book "Red Wing Potters and Their Wares" (first edition, 1981), according to research materials at the Goodhue County History Center.

"The markers are mostly for children who passed away during the years that their fathers were employed" in the industry, the Teffts wrote. The potters themselves held no sentimental kinship to the clay, they added. Potters tended to have marble or granite headstones.

"These memorials to lost children, however, show a labor of love and a personal statement of faith," the Teffts wrote.

The markers are dated in the later 1890s and early 1900s.

The most striking marker is one made for Louise Morley, a little girl born in 1897 who died in 1903. The Morley family had a long history in the pottery industry, the Teffts wrote, going back to the Philleo terra cotta factory days.

Individually cut blue letters spell out the information on front and a loving message on the other side of the monument. The marker originally had a cross on top, but Cemetery Director Bill Rooney said the cross has been stolen twice.

Currently there is no formal inventory of the sewer pipe and pottery markers at Oakwood, but Rooney said he has heard one is being created.

Some handmade gravestones also may be found in the Old Frontenac Cemetery.



Membership Application Form

A Primary \$25 annual membership is afforded all the rights and privileges of the organization. An Associate \$10 annual membership is afforded all the rights and privileges of the organization except for the receipt of the newsletter. **There must be at least one Primary membership per household address in order to have additional members at that address having Associate member status.** Each membership is afforded the right to purchase one convention commemorative.

Please indicate if your membership is Primary or Associate for your new membership or renewal.

- | | |
|---|---|
| <input type="checkbox"/> New Membership | <input type="checkbox"/> Primary annual membership fee \$25 |
| or | or |
| <input type="checkbox"/> Renewal | <input type="checkbox"/> Associate annual membership fee \$10 |

Name _____

Address _____

City _____ State _____ Zip _____

E-mail Address _____

Send Check or money order to: Red Wing Collectors Society
P.O. Box 50
Red Wing, MN 55066-0050

Wiederholt's SUPPER CLUB

**STEAKS • SEAFOOD
COCKTAIL LOUNGE
DINING AT
ITS FINEST!**

Hours:
4:30-10:30 Mon.-Thurs.
4:30-11:00 Fri. & Sat.
11:30-10:00 Sunday

**LIVE
ENTERTAINMENT**
Friday & Saturday

Reservations Phone
651-437-3528 or
507-263-2263

15 miles North
of Red Wing
on Highway 61
(In Miesville)



History Happens Here
Visit the
**GOODHUE COUNTY
HISTORY CENTER**

1166 Oak Street
Red Wing, MN
(651) 388-6024

www.goodhuehistory.mus.mn.us

HOURS

Tues.-Fri. 1pm-5pm;
Sat. & Sun. 1-5pm
Closed Mondays & Holidays

McDonald's of Red Wing

**Welcomes the Red Wing
Collectors Society**



Pottery Collectors

Come see our beautiful crocks and mugs.



2770 North Service Road
Red Wing, Minnesota

LARRY'S JUGS



Our unique shop has specialized in Red Wing Stoneware and pottery for over 19 years. Our inventory includes items for the beginning collector and items to thrill the most advanced collector.



Our shop is about sharing information and having FUN!

Buy • Sell • Trade

I'll buy one piece, or the whole collection; also taking consignments.

LARGEST INVENTORY of Red Wing Stoneware and Art Pottery

751 Wilkinson Street
Red Wing, MN 55066
Larry Peterson • 651-388-3331



Convention Hours

June 30 - July 9
8 am - 6 pm
(Wed. & Fri. open 'til 8 pm)

*Visit my booth at Countryside Antique Mall
31752 65th Ave., Cannon Falls, MN • 507-263-0352*