

RED WING COLLECTORS SOCIETY

POTTERS
EXCURSION
JUNE 11th 1915
RED WING
— TO —
ST. PAUL

“The Potters’ Excursions”
Nineteenth Annual Convention
July 5, 6, 7, & 8, 1995 Red Wing, Minnesota

The Potters' Excursions

By Gary Tefft

The striking, one-gallon jug, advertising the Stoneware Potters Unions' annual riverboat excursion, is a reminder of the "good-old days" when people found adequate the enjoyment to be had from the simple pleasures of getting together with friends, neighbors and family for a day of revelry and relaxation. The potters' excursion of 1915 was the highlight of the season for these folk whose standard of living did not include today's broad choice of entertainment options.

The differences between the day today experiences of those who navi-

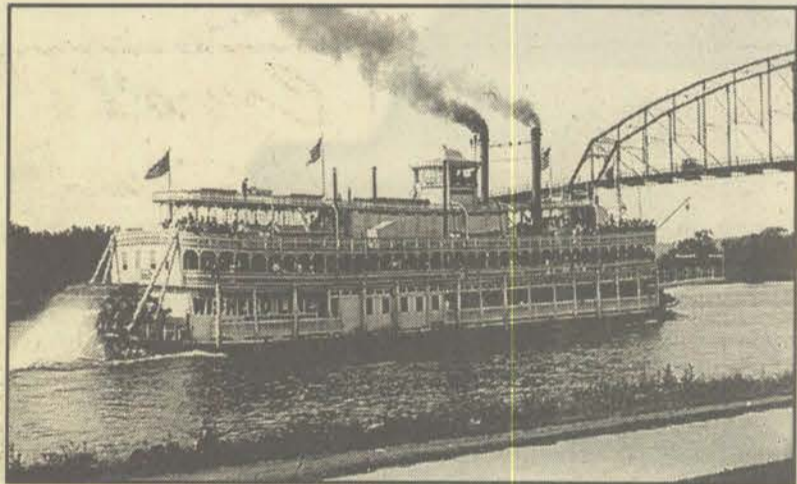
Red Wing fame as the world's leading wheat port in 1873, before the railroads erased the advantage that came from being a river town. But the grandest of them all were the gaudy, multidecked passenger and excursion boats.

The G.W. Hill was a new addition to the Wisherd Line. In its first appearance on the upper river in 1912, it included the potters' day-long trip to Stillwater, attended by 800. The following year again saw a cruise to Stillwater and a tour of the State Prison; this time attracting 1000. The enthusiasm applied to

boosted like none before: by five-column newspaper ads, broadsides and the specially stenciled, one gallon jugs which were placed in windows of stores where tickets were available. One of these jugs had been dropped into the river upstream, at Prescott, a month before the big day, with the prize of a free ticket offered by Roxie Nelson for its finder.

As in years past, the potteries declared a general holiday and suspended operations for the gala, held on Friday, June 11. The boat left Red Wing at 8:27 and docked in St. Paul at 3:55 in the afternoon, following stops at Diamond Bluff, Prescott and Hastings to pick up more excursionists. About 275 additional passengers took the train to join the boat for its return trip, swelling the company to over 1200. A happier crowd there has never been than those who arrived back at Red Wing at 11:30 after the moonlight cruise down river. The day had been filled with music and dancing, games and sightseeing, storytelling and card playing, picnicking and romance.

The fate of the jug with the note inside, set adrift upstream? Contrary to the belief held by doubters that it would be broken, sunk or lost, it was found floating in Trudel Slough by commercial fishermen Charles Ell and C.A. Carlson on the Monday following the event. Since the date of the big excursion had passed, Roxie filled the tank of their launch with five gallons of gasoline and took the jug as a souvenir. Never again will a 75 cent ticket be traded for five gallons of gas; nor will five gallons of gasoline get you a Potters' Excursion jug.



Riverboat excursion aboard the G.W. Hill.

gated to St. Paul that day and our own are many. For example, their income: in 1910 the wages for common laborers at the stoneware and sewer pipe factories were increased to \$2 per day. This meager level of wage was only afforded in light of the general prosperity of the period.

Don't feel too badly for the throng who partook of the fine June day on the river. They all reported they got their money's worth from the 15 hour trip. The tickets cost 75 cents for adults, and 40 cents for children. In fact, the 1915 Potters' excursion was the ultimate of a series of annual events that had grown into a tradition.

The tradition had been born of a necessity that is familiar to us today: health care and family welfare. The Potters' Union had long held balls, excursions and other events to raise funds to provide sick benefits to its members. A permanent Benefit Association was created at the beginning of 1912 and proposed to pay \$5 per week for up to 12 weeks to members who fell ill. Excursions had returned to popularity in Red Wing and vicinity since the catastrophic loss 22 years earlier, when the Sea Wing capsized in a windstorm on Lake Pepin, claiming 98 lives; a disaster which, for some time, spoiled the enthusiasm for recreational river travel.

The riverboats were a slice of American apple pie, the recounting of which has never been flavored more correctly than when described by Samuel Clemens, writing as Mark Twain. The cargo carrying packet boats were responsible for earning

promoting the event was evidenced by the awarding of a diamond ring to Margaret Hallenberger, who exceeded all others in ticket sales.

The boat could board 2000 passengers and had an unobstructed 30 x 120 foot dance floor with a full-time orchestra. To ride aboard, or simply to watch it pass by, was a



G.W. Hill excursion boat.

thrill for all the senses. The hissing of the steam engine, the surging of the huge piston rods and the slap-slap-slapping of the enormous drive-wheel set a tempo that was both steady and urgent. Thick, black smoke billowing from twin stacks crowned the gingerbread encrusted leviathan. Those who think that nothing could be more stirring than a steam whistle wailing in the distance have never heard *Pretty Red Wing* shouted out on a sunny morning from a riverboat calliope.

The 1915 excursion had been

The Red Wing
Collectors Society
Convention
Supplement
Volume XI: 1995
Editor:
Chuck Drometer



McDonald's of
Red Wing

"States Largest Indoor Playland"

Welcomes

Red Wing
Collectors Society

Pottery Collectors — Ask about our
souvenir crocks & mugs!

2770 North Service Drive
Red Wing, MN • 388-1413

Mon. - Thurs., 5:30 a.m. - 11:00 p.m.
Fri./Sat., 5:30 a.m. - 12 Midnight
Sun., 6:30 a.m. - 11:00 p.m.

Sportswear for
people who refuse
to stay inside

At Winona we have clothes that are stylish and comfortable and can keep up with your active lifestyle. You'll find a great selection of sportswear, sweaters and unique gifts, all backed by our famous 100% satisfaction guarantee.

WINONA

Red Wing Next to the Pottery Red Wing, MN 612-388-5738

Red Wing Pottery
Salesroom

Specializing in collector's items:

- New "Chip Off The Old Crock" Kids T's
- Red Wing, MN Pottery Custom Afghans
- "Hard Crock Cafe" Sweats & T's
- New Red Wing Embroidered Sweats & T's
- Original Red Wing Dinnerware 25¢ to \$3.00
- New Collectible Spoon: "Markings" Series
- Red Wing Earrings & Key Chains
- The New, Locally Made Red Wing Stoneware
- Reprint of an Original Book: "Home Packing & Preserving, The Red Wing Way"

HOURS: 8-8 Monday - Saturday; 9-6 Sunday

RED WING
Pottery Sales



Loons and
Ladyslippers



1995 Old West Main Street
388-3562 1-800-228-0174

Greetings!

On behalf of the City of Red Wing, I would like to formally invite you, your families, and special guests to our community for your nineteenth annual convention.

Keep coming! We all love you in Red Wing and will do whatever is necessary to make your stay comfortable and your meetings successful.

While in Red Wing, be sure to take time to enjoy the natural beauty of the Mississippi River and bluffs as well as visit our restoration projects and shopping centers.

Thanks for coming and please keep coming back.

Romeo C. Cyr

Mayor



Welcome Collectors

Need Cash?

Automatic Teller Machines located at ...

Auto Bank

Fourth & Bush Street

Fina Station

Hwy. 61 & Tyler Road

Accepts most all ATM cards ...



GOODHUE COUNTY NATIONAL BANK

Red Wing, MN • Member FDIC

Welcome to Red Wing

Welcome to the beautiful City of Red Wing, Minnesota and the 1995 Red Wing Collector's Society Convention. It is hard to imagine that so many years have passed since our first Convention. The Society continues to grow, and prosper in its many endeavors.

Annually, my wife Deb, and I, look forward to our visit to Red Wing. It is an extremely busy time for us, what with Deb's involvement in the Membership Committee and my various activities as President, but we greatly look forward to renewing friendships, which have been made over the years. The chance to meet new friends and to visit various business establishments (antique shops) is always another highlight of the Convention.

I look forward to seeing all of you in Red Wing in July.

Barney Olson II

President



Carroll's Antiques

Historic Downtown Hastings
107 E. 2nd St.

10,000 sq. ft. of Fine Antiques

- Victorian - Turn-of-the-Century Furniture - Glass - China - Pottery - Paper - Featuring Estate Jewelry - Free Ring Sizing

Hours:

Mon.-Sat. 10-5; Sun. 12 to 5
(612) 437-1912

Mary & Don Carroll

Goodhue County Historical Museum

For many decades, back as far as the turn of the century, archaeologists in the Red Wing area have been studying and learning about the people who were here before us, how they lived and what they made. Beautiful pottery shards have been found, as well as whole vessels made from the local river clay of this area. These date back to approximately 1100 A.D. and even earlier.

Archaeologists also search for more recent material such as that left by inhabitants of early French forts, the fur traders, the military personnel at Fort Snelling in 1805 and many other locations. One area of special interest close to home in the Red Wing "pottery dump", the contents of which can tell us a great deal about the early stoneware companies.

The museum staff is planning a special display at the museum on material which has been found at the pottery dump for the convention this year. It will include pieces from almost all of the companies which originated here in Red Wing. Also displayed will be fragments unearthed from the site of the first terra cotta factory started by William M. Philleo in the 1860s along what is now Hay Creek Road.

Work has continued on inventorying and appraising the museum pottery collection. Again, Bonnie and Gary Tefft have come to the rescue, this time by listing and apprais-

ing the pieces we have in storage, some of which are part of the original museum collection and some from the more recently acquired Neal Arnold gift.

We are all looking forward to welcoming members of the Red Wing Collectors Society and its chapters this July. It is always a special event in Red Wing, not only for us at the museum, but for everyone in this community. We hope many of you will find an opportunity to visit the museum during the convention to see our new display on the pottery dump as well as our other exhibits.

Welcome to Red Wing and the museum!

Jean Chesley

Postscript: On a personal note, I want to tell you that as of January, 1995, I retired as director of the society after 28 years. However I continue as a volunteer and anticipate seeing all of you in July. You will enjoy meeting Mary Maronde, our new director, to whom we have explained the wonderful relationship the Goodhue County Historical Society has had with the Red Wing collectors for over 20 years! She is looking forward to welcoming all of you to the museum.



Mary Maronde, Goodhue County Historical Society Director

Celebrating our 138th Year

**RED WING
REPUBLICAN
EAGLE**

This area's daily home newspaper

Members of the Board

President	Barney Olson II
Vice President	Rich Cronemeyer
Secretary	Ann Busse
Treasurer	Jerry Flicek
Historian	Rachael Morris
Membership Committee	Debbie Olson
Convention Committee	Dave and Diane Hallstrom
Education Committee	Larry Peterson
Commemorative Committee	Larry Roschen
Display Committee	Jeff & Ruby Benson
Publicity Committee	Chuck Drometer
Auction Committee	Jeff Floyd

COUNTRY SIDE ANTIQUE MALL

Cannon Falls, MN

40 Dealers • Antiques • Collectibles
Red Wing Stoneware • Art Pottery • Dinnerware

LOCATION: 20 miles west of Red Wing. Take Hwy. 19 west to Cannon Falls - south at stoplight, 1 mile.

HOURS: Mon-Sat., 9:30 - 5:30, Sunday, 11 a.m. - 5:30 p.m.

EXTENDED CONVENTION HOURS:
Friday, July 8 — 8:30 a.m. - 8:30 p.m.

507-263-0352

The Ladner Brothers

The Ladner Brothers jug is such a famous piece of Red Wing pottery that I think it needs to have some of its history told.

The brothers were Frank Bernard and Carl Henry Ladner. They were born in Ostercappeln, Hanover,

1877 and died 25 June 1947 in Chicago. They came to America with their parents Franz Henry and Anna (Ebke) Ladner and two sisters Louise and Mary. They settled first in St. Paul for six years then came to Red Wing in 1895.

Shortly after taking up residence in Red Wing the two brothers opened the Ladner Brothers Saloon and Wholesale Liquor Establishment on Main Street in the present location of the Lagrange Park.

After disposing of the wholesale business in the early 1900s the two brothers continued to operate the Ladner Brothers Saloon at 328 Main Street. About 1905 Carl relinquished his interest in the business and moved to Aberdeen, S.D., where he opened a similar business called the Aberdeen House, in partnership with Frank, leaving Frank to continue the business in Red Wing. After

World War I Frank opened a grocery store at the same location until 1925.

Frank married Ellen "Nellie" Cain in 1893. She died on 5 Nov. 1903. They had six children. Frank then married Anna Koester 16 May 1905 and they had four children.

Carl H. Ladner married Mary Staiger 12 Sept. 1899 in Red Wing. They had seven children.

Sometime later Carl moved to Chicago where he operated a Coca-Cola plant for many years. Then later he and partner Rube Olson, also a former Red Wing man, oper-

ated a liquor establishment and cafe in Chicago. Carl and Mary's descendants still live there.

Frank has descendants still living in Red Wing: Frances, Frank Sr., Bernard, Anna (Koester) second wife. Back Row; Loretta (Ladner) Raetz, Helen, Frank H. Jr., and Marion. Ed (Loretta Ladner) Raetz, now 94 years young, and his two granddaughters, Mrs.

Clarence (Ione Ladner) Mandelkow and Mrs. Franklyn (Joan Ladner) Knowlton.

Enclosed are two pictures, one of Frank B. and the other of Karl. The family picture is from Loretta (Ladner) Raetz and is a picture of her father Frank B. and stepmother Anna (Koester) Ladner and children from both marriages of Ellen Cain and Anna. They are from left to right starting with the little girl front row; Frances, Frank Sr., Bernard, Anna (Koester) second wife. Back Row; Loretta (Ladner) Raetz, Helen, Frank H. Jr., and Marion.

The other is from the collection of Dolores (Haustein) Harris. It is the wedding picture of Carl H. and Mary (Staiger) Ladner on 12 Sept. 1899. It is as clear today, almost 100 years later, as when it was taken. The picture was given to my grandfather, Casper "Cap" F.J. Haustein, who was a first cousin to Mary Staiger.



12 September, 1899. Mary Margaret Staiger and Carl Henry Ladner. She is 1st cousin to Casper F.J. Haustein through the Koch line. Both their mothers were Kochs.

Germany. Frank was born 25 July 1872 and died 26 June 1956 at Red Wing. Carl Henry was born 25 May



Ca. 1918/1919 Frank B. Ladner family and children by Ellen Cain and Anna Koester. Front - Frances (Ladner) Given, Frank B. Ladner Sr., Bernard, Anna (Koester). Back - Loretta (Ladner) Raetz, Helen (Ladner) Given, Frank Jr., Marion/Mary Ann (Ladner) Jorgenson.



1 Quart and 1/2 Gallon Ladner Jugs.

 Red Wing's
Corner Drug and
Clinic Pharmacy

"Service with a smile"

Third & Bush Streets,
Red Wing

Phone 388-3521

Open Seven Days A Week

LARRY'S JUGS




751 Wilkinson Street
Red Wing, Minnesota 55066

Our unique shop specializes in Red Wing stoneware and pottery. Our inventory includes items for the beginning collector to items for the most advanced collector.


- BUY - - SELL - - TRADE -

CONVENTION HOURS - JULY 1-9
8 A.M. to 6 P.M.
PLUS SPECIAL EVENING HOURS
(WED., FRI.) OPEN UNTIL 9 P.M.
612-388-3331



Welcome to Red Wing!

Hallstrom's



785 Hallstrom Drive 388-7178
Downtown Floral Shoppe 388-6334
313 Bush St.

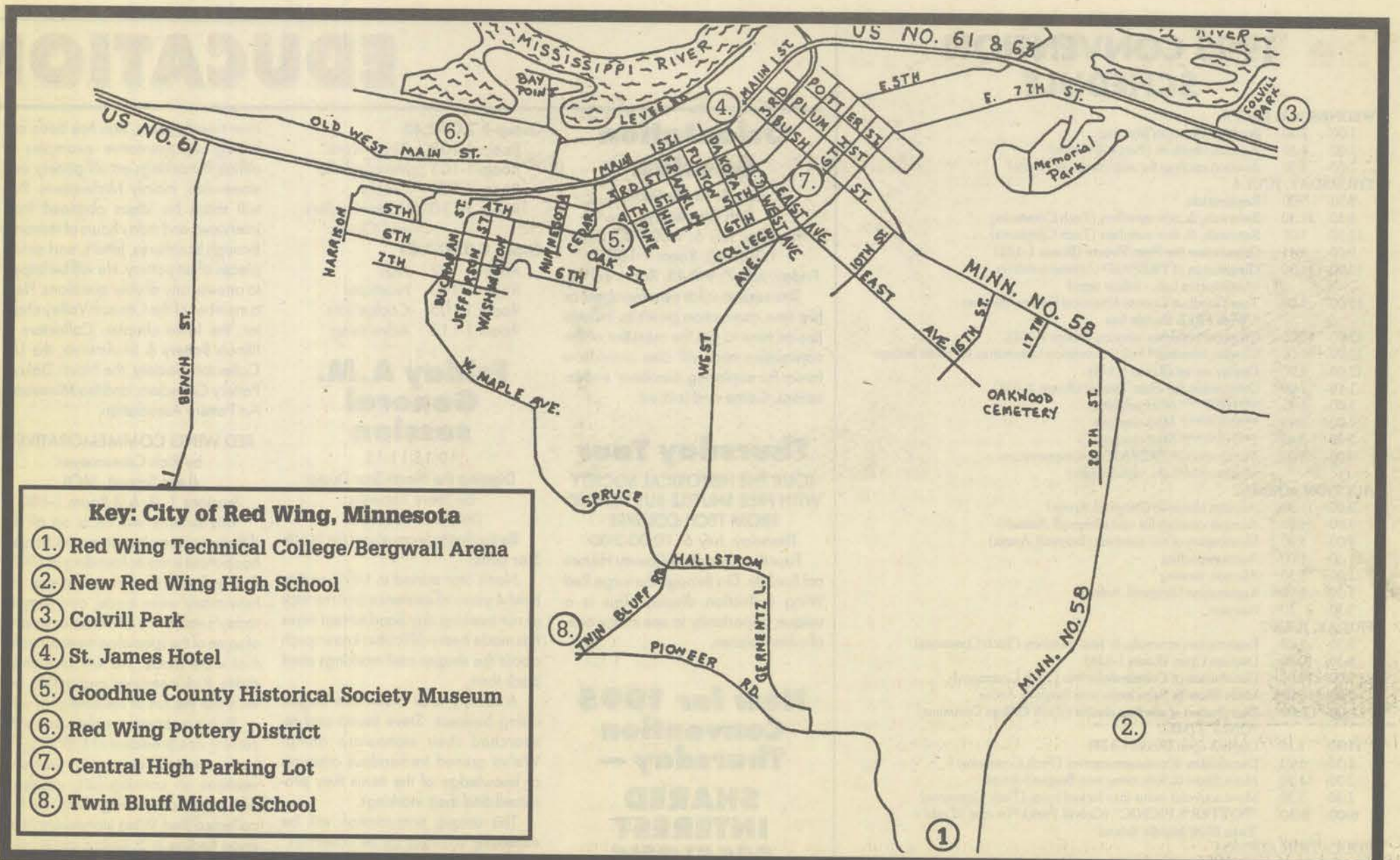
★ Be sure to stop by our downtown store
313 Bush St. and see our stoneware display.

Dave & Diane Hallstrom

Loner

While the Red Wing Ladners Liquor Store ad has been seen on Red Wing jugs, these have been in the half gallon, gallon, and quart sizes. The owner of this five gallon Beehive Jug bought the jug in Red Wing a number of years ago. Since then, the owner has been checking with other collectors, authors, and at sales events, but can find no record of this advertisement used on a five gallon size Beehive. One possibility is that Red Wing sales staff provided the store with this jug to use in the window or the counter display. Even in the nineteen hundreds five gallons of liquor would have been a lot.





Key: City of Red Wing, Minnesota

- ① Red Wing Technical College/Bergwall Arena
- ② New Red Wing High School
- ③ Colvill Park
- ④ St. James Hotel
- ⑤ Goodhue County Historical Society Museum
- ⑥ Red Wing Pottery District
- ⑦ Central High Parking Lot
- ⑧ Twin Bluff Middle School

Historical Society Puts Trash On Display

The Goodhue County Historical Society opens its new exhibit "Jewels or Junk: Pottery From the Pits" on July 6th. The exhibit features Red Wing ceramic pieces taken from local pottery dumps. It will open in conjunction with the annual Red Wing Collectors Society convention.

"The local pottery and sewer pipe companies prided themselves on high-quality products," says Char Henn, Curator for the Historical Society. "When they discovered imperfections in their work, they hauled their unmarketable goods to the dump. There were a number of dumps along Old West Main Street

between Highway 61 and Withers Harbor Drive."

Over the years, construction has disturbed these dumps, bringing to light masses of forgotten treasures. "Going down layer by layer, you get a great sense of progression in the pottery business. But now most of the dumps have new buildings or roads on top of them," says Henn. "Our exhibit is one of the few places you can see some of the treasures rescued from the dumps."

The exhibit features pottery shards from the Society's and from private collections.

"Jewels or Junk" will be on display through November, 1995. For

more information, call (612) 388-6024.

The Goodhue County Historical Society is located at 1166 Oak Street in Red Wing. It is open Tuesdays through Fridays from 10:00 a.m. to 5:00 p.m., and weekends from 1:00 to 5:00 p.m. Admission is \$2.00 for adults and free for children 16 and under.

There will be a free tour on Thursday, July 6, from 10 a.m. to 3 p.m. for all members who wear their badges. If you wear your badge Friday, and Saturday, July 7, and 8, you will receive a 10% discount on any purchase.

Welcome Collectors!

Hill Street Antiques

Specializing in:
Red Wing Dinnerware
Art Pottery
&
Stoneware

612-388-0736

212 Hill Street - Red Wing, MN 55086
3 Blocks East of Old West Main
Extended Convention Hours

Hager City Antiques

N 1597 Co. Rd. VV 4 Hwy. 63
Hager City, WI 54014
(3 miles No. of Red Wing)
715-792-2800

Antiques, Collectibles,
Glass, Red Wing,
Furniture, Gifts
and Stuff

Buy and Sell

Open Year Round
9 a.m. to 5 p.m.



North America's Finest Economy Lodging.®

Located In The Historic Pottery District

- Conveniently Located
- Direct Dial Phones
- Free Color TV/Showtime
- Air Conditioned
- Ample Parking
- 65% Non-Smoking Rooms
- Meeting/Conference Rooms
- Heated Indoor Pool Area
- Restaurant/Lounge Adjacent
- No Pets
- AAA Approved
- Free Coffee & Donuts
- All Major Credit Cards Accepted

Hwy 61 & Withers Harbor Dr

388-0491

For toll free reservations call:
Superline® 1-800-800-8000



1995 CONVENTION SCHEDULE

WEDNESDAY, JULY 5

- 1:00- 2:30 Board of Directors Meeting
- 2:00- 4:30 Auction check-in (Bergwall Arena)
- 2:00- 4:30 Auction catalogs for sale (Bergwall Arena)

THURSDAY, JULY 6

- 8:30- 5:00 Registration
- 8:30- 11:30 Renewals, & new members (Tech Commons)
- 12:30- 5:00 Renewals, & new members (Tech Commons)
- 9:00- 9:45 Orientation for First Timers (Room 1-102)
- 10:00- 11:30 Distribution of PREPAID Commemoratives (Automotive Lab. - follow signs)
- 10:00- 3:00 Tour Goodhue County Historical Society museum
* With FREE shuttle bus
- 11:00- 12:00 Chapter Presidents meeting (Room 1-102)
- 12:00- 1:00 Chapter meetings* See Convention Committee for room listings
- 12:00- 4:00 Display set-up (Room 1-124)
- 1:15- 2:00 Orientation for First Timers (Room 1-102)
- 1:00- 1:45 ***NEW*** Mini sessions
- 2:00- 2:45 ***NEW*** Mini sessions
- 3:00- 3:45 ***NEW*** Mini sessions
- 3:00- 5:00 Distribution of PREPAID commemoratives (Automotive Lab. - follow signs)

AUCTION AGENDA

- 9:00- 11:30 Auction check-in (Bergwall Arena)
- 9:00- 5:30 Auction catalogs for sale (Bergwall Arena)
- 9:00- 5:30 Distribution of bid numbers (Bergwall Arena)
- 11:30- 1:00 Auction grading
- 1:00- 5:30 Auction viewing
- 5:30- 7:00 Registration (Bergwall Arena)
- 5:30- ??? Auction

FRIDAY, JULY 7

- 8:30- 3:20 Registration, renewals, & new members (Tech Commons)
- 8:30- 10:00 Displays Open (Room 1-124)
- 9:00- 10:00 Distribution of Commemoratives (Tech Commons)
- 9:00- 10:00 Move Show & Sales items into Bergwall Arena
- 11:00- 12:00 Distribution of auction checks (Tech College Commons)
*ONLY TIME!!
- 11:30- 3:20 Displays open (Room 1-124)
- 2:30- 3:20 Distribution of commemoratives (Tech Commons)
- 2:30- 3:30 Move Show & Sale items into Bergwall Arena
- 2:30- 3:30 Move souvenir items into locked room (Tech Commons)
- 6:00- 8:30 "POTTER'S PICNIC" (Colvill Park) *In case of rain - Twin Bluff Middle School

EDUCATION AGENDA

- 9:00- 9:45 ORIENTATION FOR FIRST TIMERS (Room 1-102)
- 9:00- 10:00 Sale of Education Material (Tech Commons)
- 10:15- 11:30 GENERAL SESSION (Tech Commons)
- 11:30- 3:20 Sale of Education Material (Tech Commons)
- 12:10- 2:30 Educational seminars (Rooms to be announced)
- 3:30- 5:30 BUSINESS MEETING *Be sure to be there (Tech Commons)

SATURDAY, JULY 8

- 8:00- 10:30 Registration, renewals, & new members (Tech Commons)
- 8:00- 2:00 Displays open to members and the public (Room 1-124)
- 9:00- 11:00 Auction price catalogs for sale (Bergwall Arena)
- 9:00- 10:30 Distribute Commemorative *While supply lasts (Tech Commons)
- 10:30- ??? Commemorative lottery *While supply lasts (Tech Commons)
- 2:00- 4:30 Display removal (Room 1-124)
- 6:00- ??? Convention banquet (Treasure Island Banquet Facility)

SHOW & SALE AGENDA

- 7:00- 8:00 Set-up for souvenir sale (Tech Commons)
- 8:00- 9:00 Set-up for Show & Sale (Bergwall Arena)
- 8:00- 2:30 Souvenir sales open (Tech Commons)
- 9:00- 10:30 Show & Sale open to MEMBERS ONLY (Bergwall Arena)
- 10:30- 1:30 Show & Sale open to public (Bergwall Arena)
- 1:30- 2:30 Show & Sale removal (Bergwall Arena & Tech Commons)

EDUCATION

Orientation Session

Con & Sandy Short,
Rich Cronemeyer

Thursday, July 6: 9:00-9:45 and
1:00-1:45, Room 1-102

Friday, July 7: 9-9:45, Room 1-102
This session is for new members or first time convention goers to include tips on how to get the most out of the convention and will also provide a forum for exploring members' expectations. Come and join us!

Thursday Tour

TOUR THE HISTORICAL SOCIETY WITH FREE SHUTTLE BUS TO AND FROM TECH COLLEGE

Thursday, July 6: 10:00-3:00

Tour the Goodhue County Historical Society. Go through the large Red Wing collection display. This is a unique opportunity to see many one-of-a-kind pieces.

New for 1995 Convention Thursday - SHARED INTEREST SESSIONS

These sessions are set aside to meet other collectors with your interests, have fun, and share stories, knowledge, and experience. Bring pictures, calling cards and want lists to pass out at the new shared interest groups. We have set aside Thursday afternoon from 1:00-4:00 for these group sessions. The time will allow for everyone who wants to participate by sharing their experiences, knowledge, and interests.

Group A - 1:00-1:45

- Room 1-102 Kitchen Stoneware
- Room 1-103 Miniatures
- Room 1-105 Salt Glaze
- Room 1-110 Artware

Group B 2:00-2:45

- Room 1-102 Dinnerware
- Room 1-103 Memorabilia
- Room 1-105 Crocks
- Room 1-110 Water Coolers and Churns

Group C 3:00-3:45

- Room 1-102 Jugs
- Room 1-103 Northstar
- Room 1-105 Cookie Jars
- Room 1-110 Advertising

Friday A.M. General session

10:15-11:15

Digging the North Star Dump
by Steve Showers
(Welch, Minnesota)

Be the first to learn about the North Star dump.

North Star started in 1892 and its brief 4 years of existence and the lack of not marking any hand turned items has made it very difficult to know much about the shapes and markings used back then.

A century after North Star began doing business, Steve found and researched their stoneware dump. We've gained tremendous amounts of knowledge of the items they produced and their markings.

This unique presentation will be extremely valuable for all collectors.

Steve got started collecting in 1968, when his sister found several pieces of stoneware on their farm... "I knew the Red Wing dump was untouched at that time and that got me going". I still collect, do shows and flea markets and take in some auctions when I can.

Educational Seminars

MAKING BOOK SENSE OF THE SHAPE NUMBERS ON RED WING ART POTTERY

by Ron Linde,
(Northfield, MN)

Sessions 1, & 2 Room 1-102

Ron Linde is an ophthalmologist. For

over twenty years, Ron has been collecting representative examples of different markings on art pottery and stoneware, mainly Midwestern. Ron will share his ideas obtained from interviews and many hours of research through brochures, letters, and actual pieces of art pottery. He will be happy to answer any of your questions. He is a member of the Cannon Valley chapter, the Iowa chapter, Collectors of Illinois Pottery & Stoneware, the Uhl Collectors Society, the North Dakota Pottery Collectors, and the Minnesota Art Pottery Association.

RED WING COMMEMORATIVES

by Rich Cronemeyer
(Lees Summit, MO)

Sessions 1, 2, & 3 Room 1-103

This seminar will focus on all the different commemoratives the Society has put out since its founding in 1977. Rich will talk about each piece, tell how many were made, and suggest today's value. He will show examples of some of the special commemoratives that were made. He will also show slides. Rich's seminar and outline will increase the fun of collecting for you.

Rich is a charter member and is the current vice president of R.W.C.S. He has presented seminars at past conventions on canning jars, catalogs, and paper advertising items. He has collected Red Wing stoneware items since finding a 5 gallon large wing crock in his grandmother's basement at age 16; a "slow but steady" collector, he particularly enjoys finding spittoons and sewer pipe pieces. Rich is a diagnostic radiologist.

ADVERTISING JUGS

by Larry Peterson
(Farmington, MN)

Sessions 1, 2, & 3 Room 1-105

One of the most collectible items for people who like advertising are jugs. Come see and hear about all the many types of jugs and variety of advertisements that Red Wing made.

Larry is the current Education Committee Chairperson, is a past president of the Cannon Valley chapter, and has been involved in every conven-

OVERVIEW OF AFTERNOON SEMINARS

	Room 1-102	Room 1-103	Room 1-105	Room 1-107 & 1-108	Room 1-109	Room 1-110	Room 1-122	Room 1-123
Session 1 12:10-12:50	Making Sense of Shape Num. on RW Art Pottery Ron Linde	Red Wing Commemoratives Rich Cronemeyer	Advertising Jugs Larry Peterson		Identification Panel Stoneware Dan DePasquale Gary Tefft	Dinnerware Knowledge for the Collector Cliff Ekdahl	Collecting Red Wing Cookie Jars Len Lindstrom and Kent Williamson	The Bottle Stoneware Collection Steve Ketchum
Session 2 1:00-1:40	Making Sense of Shape Num. on RW Art Pottery Ron Linde	Red Wing Commemoratives Rich Cronemeyer	Advertising Jugs Larry Peterson	Red Wing Reproduction Chuck Drometer	Identification Panel Art Pottery & Dinnerware Ray Reiss and Cliff Ekdahl		Collecting Red Wing Cookie Jars Len Lindstrom and Kent Williamson	Most People Called Him Johnnie: A Common Man with Uncommon Ability Corrine Reed
Session 3 1:50-2:30		Red Wing Commemoratives Rich Cronemeyer	Advertising Jugs Larry Peterson	Red Wing Reproduction Chuck Drometer	Identification Panel Art Pottery Ray Reiss and Ron Linde	Dinnerware Knowledge for the Collector Cliff Ekdahl	The Bottle Stoneware Collection Steve Ketchum	Most People Called Him Johnnie: A Common Man with Uncommon Ability Corrine Reed

DAY 1995 - Friday, July 7

tion since his charter membership began. He is co-author of the books *Red Wing Stoneware* and *Red Wing Collectibles*. He owns Larry's Jugs in Red Wing. To support his collecting he is Senior vice-president of Edina Realty.

RED WING REPRODUCTIONS

by Chuck Drometer
(Cannon Falls, MN)

Session 2 & 3 in
Rooms 1-107 & 1-108

Chuck is a past president of the Cannon Valley chapter and has assisted on panels and presentations before. He and his wife Eva, have been collecting Red Wing since the early 1970's. They are involved in the Countryside Antique Mall of Cannon Falls, and love to travel just about anywhere to look for Red Wing. Chuck's vast adventures in collecting qualify him for this presentation. Be careful... he might try to sell you a car!

IDENTIFICATION PANEL ON STONEWARE

Session 1 in Room 1-109

Dan DePasquale and Gary Tefft

Dan is a past president of the R.W.C.S. and is co-author of the books *Red Wing Stoneware* and *Red Wing Collectibles*. His attraction to Red Wing stoneware began in 1967 while a college senior in Nebraska. For 50 cents, he purchased a 3 gallon wing shoulder jug at a local auction. As a teacher, principal, and superintendent, his interest in learning as much as he could about his obsession led him to authoring the books. Dan lives in Norfolk, NE.

Gary is a Red Wing native who has several relatives that can claim ties to the "Pot Shops." His interest in stoneware began in 1981 with the purchase of a simple 3 gallon crock, "just to have a memento of my hometown." Curiosity about the history of the city and its pottery factories led to extensive research and photography of collections which resulted in the publication of the book *Red Wing*

Potters and Their Wares, co-authored with his wife Bonnie. Gary lives in Menomonie Falls, WI.

IDENTIFICATION PANEL ON ART POTTERY AND DINNERWARE

Session 2 in Room 1-109
Ray Riess and Cliff Ekdahl

Ray has an extensive collection of art pottery. He will talk about his up and coming picture book and price guide on *Red Wing Art Pottery*. He is a commercial photographer from the Chicago area, and is an avid collector of Red Wing Art Pottery.

For 32 years Cliff has been a band teacher before he retired. He came to Red Wing the year the Pottery Strike was on. He started collecting the musical motif figures like the piano and the violin. Len Lindstrom started him on cookie jars. Then, after suffering a stroke four years ago, he motivated himself to stimulate his brain by memorizing the dinnerware book as therapy. He feels that he has made a 99% recovery from the stroke, but now he suffers from collectoritis-magnanimous-dinnerwareitis. Cliff is the president-elect of the Cannon Valley chapter.

IDENTIFICATION PANEL ON ART POTTERY

Session 3 in Room 1-109
Ray Riess and Ron Linde

Ray has an extensive collection of art pottery. He will talk about his up and coming picture book and price guide on *Red Wing Art Pottery*. He is a commercial photographer from the Chicago area, and is an avid collector of Red Wing Art Pottery.

Ron Linde is an ophthalmologist. For over twenty years, Ron has been collecting representative examples of different markings on art pottery and stoneware, mainly Midwestern. Ron will share his ideas obtained from interviews and many hours of research through brochures, letters, and actual pieces of art pottery. He will be happy to answer any of your questions. He is a member of the Cannon Valley chap-

ter, the Iowa chapter, Collectors of Illinois Pottery & Stoneware, the Uhl Collectors Society, the North Dakota Pottery Collectors, and the Minnesota Art Pottery Association.

DINNERWARE - KNOWLEDGE FOR THE COLLECTOR

by Cliff Ekdahl
(Red Wing, MN)

Sessions 1 & 2 in Room 1-110

For 32 years Cliff has been a band teacher before he retired. He came to Red Wing the year the Pottery Strike was on. He started collecting the musical motif figures like the piano and the violin. Len Lindstrom started him on cookie jars. Then, after suffering a stroke four years ago, he motivated himself to stimulate his brain by memorizing the dinnerware book as therapy. He feels that he has made a 99% recovery from the stroke, but now he suffers from collectoritis-magnanimous-dinnerwareitis. Cliff is the president-elect of the Cannon Valley chapter.

COLLECTING RED WING COOKIE JARS

by Len Lindstrom
(Lubbock, TX)

and Kent Williamson
(McGregor, MN)

Sessions 1 & 2 in Room 1-122

Len has taken new slides since his last presentation in 1992 on cookie jars. He will provide historical data, show different markings, and explain the rarity of unusual and "exotic" jars down to the ordinary ones. Some of the session will deal with "lunch hour" jars, reproductions, Jolly Jars, and jars of unknown origin. Len has disciplined himself to collecting only Red Wing cookie jars and Red Wing dinnerware plates. He is retired, but deals in antiques and collectibles with booths at the Antique Mall of Lubbock. One of his books is devoted exclusively to Red Wing stoneware and pottery.

Kent Williamson will feature the older jars, the saffron and the stoneware ones. Kent has been on identifi-

cation panels before. He was raised in Minnesota and has been collecting Red Wing for almost 10 years. He has a special interest on cookie jars, bean pots, and Bob White. Kent is past president of the Southwest Red Wingers.

THE BOTTLE - STONEWARE CONNECTION

by Steve Ketchum
(Minneapolis, MN)

Session 1 in Room 1-123 &

Session 3 in Room 1-122

Have you ever been tempted to collect the bottles, shot glasses, corkscrews and other memorabilia which turn up with the same names seen on your advertising jugs? Many companies with names such as Wm. Radam, John Roches, Michaud Bros. marketed smaller doses of their products in glass bottles. We will examine many examples, learn how to determine the age of an old bottle, and where to learn about local company histories.

Steve Ketchum began collecting old bottles and advertising items 28 years ago - his interest in stoneware soon followed, fueled by relatives including his mother and great-grandfather, who worked in the Red Wing clay industries. Steve supports his collecting habits by teaching junior high English.

MOST PEOPLE CALLED HIM JOHNNIE: A COMMON MAN WITH UNCOMMON ABILITY

by Corrine Reed

(West Des Moines, IA)

Sessions 2 & 3 in Room 1-123

This video presentation will feature the life and many examples of the work of potter, Johnnie Nelson, who toiled for 66 years giving beauty to clay. For 23 years he was at the Red Wing Stoneware Company. He then moved to What Cheer Clay Products in What Cheer, IA for 6 years. Finally he obtained his own pottery, John Nelson & Sons Clay Products in What Cheer, where his nimble fingers worked their magic for 37 more years before his retirement 40 years ago in 1954 at age 79.

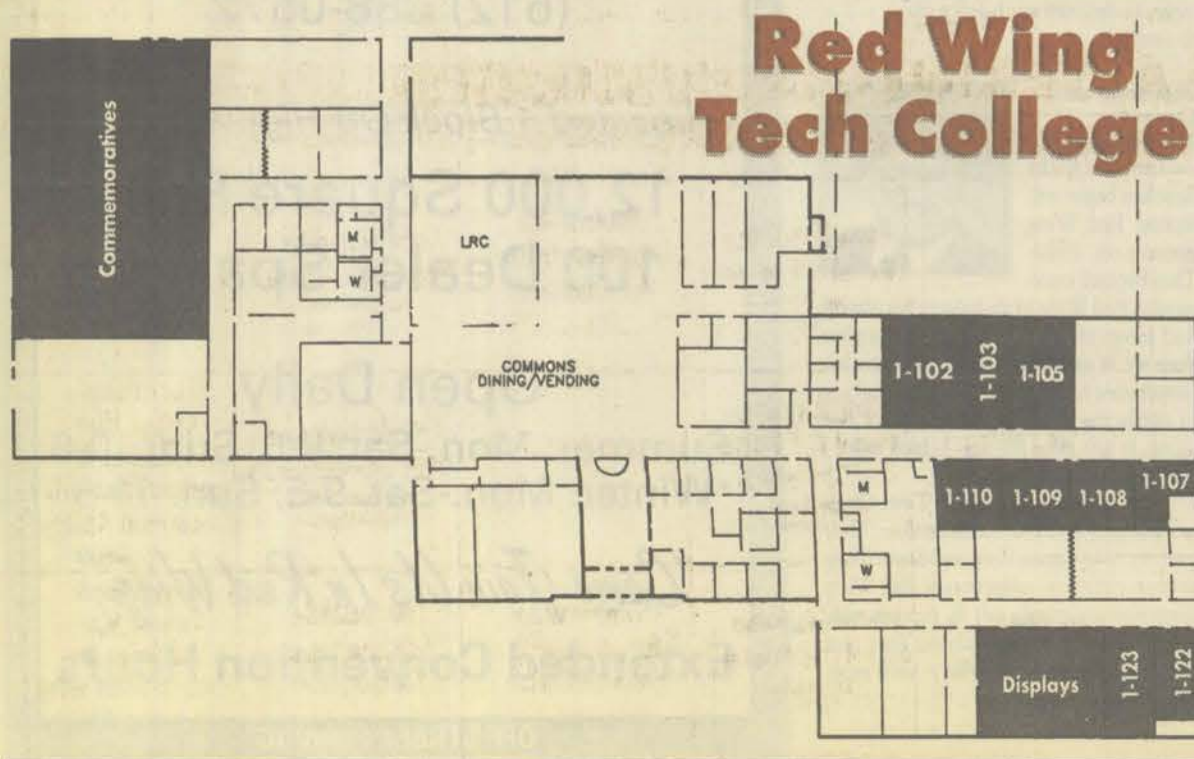
Corrine is a junior high Science teacher in Des Moines, IA; president of the Iowa chapter of RWCS; and co-editor of the Iowa chapter newsletter, "Inside Iowa." In addition to Red Wing, she and husband Lowell, belong to the Sleepy Eye Club and the Illinois Collectors of Pottery and Stoneware Club. Collectors of stoneware since the late 1970's, they have been forced to gradually narrow their collecting to Red Wing, Sleepy Eye, Illinois, and Blue and White, with a special interest in Iowa made pottery and stoneware. Corrine spend many hours researching and gathering information on Iowa potteries such as the Marshalltown Pottery, Ft. Dodge Stoneware Company, What Cheer potteries, John & William Raab potteries of Cedar Falls and Waterloo, and the Melcher, Beck & Turley potteries near Parisch. Interestingly and coincidentally, many of these investigations have led back to direct connections to red Wing. It's a small world after all!

Red Wing Collectors Society Mid-Winter Get Together

NEW FOR 1996!!! This educational experience will help you get excited about Red Wing during the winter.

The extravaganza will be held in Rochester, MN in March of 1996. Saturday will start off with some educational presentations from 10:00 till 12:00. The early afternoon will

be filled with round table discussions giving you an opportunity to visit and to discuss your many collecting interests. The balance of Saturday will be set aside for buying, selling, and trading. A Saturday night reception is being planned in order for everyone to relax, visit, and have fun.



APPLICATION FORM

Please start my \$15 membership and subscription with the next issue of the Newsletter.

Please renew my \$15 membership and subscription.

Enclosed is my check for \$ _____
(Make remittance payable to Red Wing Collectors Society, Inc. Membership fee is \$15 per year.)

Name _____

Address _____

City _____ State _____ Zip _____

Return to:
Debbie Olson
P.O. Box 184
Galesburg, IL 61402-0184

My collection interests are:
 Stoneware
 Dinnerware
 Art Pottery

Please print clearly

Officers and committee chairs ...

President Barney Olson II

My interest in Red Wing pottery goes back to shortly before the first convention. While roaming around a northern Wisconsin antique shop, the name is long since forgotten, I saw a 5 gallon jug with a large red wing. While it seems to be a fairly typical story of how people got interested in Red Wing, I purchased this jug and the fever began to take hold. I still have the jug, to this day. Over the years Deb and I have acquired many different types of Red Wing and have subsequently tried to refine our collection into mostly salt glaze, cookie jars and gray line areas. Not to leave out the dinnerware faction of the Society, we do have a rather complete (no water cooler) set of Bob White. Red Wing is very hard to find, in any quantity or quality in our area, so we annually look forward to the convention and other miscellaneous trips to the Red Wing area.



Display Committee Jeff & Ruby Benson

Jeff & Ruby Benson live in Prescott, WI, about 20 miles from Red Wing. We started collecting Red Wing in 1985. Jeff's parents had a 20 gal. Wing crock, a 5 gal. beehive, and a 5 gal. salt glaze churn which we purchased from them. After that we were hooked on Red Wing. We collect mostly stoneware. Jeff specializes in Birchleaf pieces. Ruby collects chicken feeders from all different potteries. We are active in the Cannon Valley Chapter. We did a display in 1989 and have helped out in the Display Room every year since. In 1992 we were elected to chair the Display Committee. This year there will again be some great displays by members. Also, there will be some real treasures on the Rare Item table. Be sure to stop by the Display Room to say hello and view the displays.



Education Committee Larry Peterson

Larry Peterson is a charter member of the Red Wing Collectors Society, past president of the Cannon Valley chapter. He owns "Larry's Jugs", a shop in Red Wing that specializes in Red Wing items. He enjoys sharing his knowledge and experiences of collecting, and has participated in every convention through seminars, displays, or as a banquet speaker. He is co-author of three books: Red Wing Stoneware, Red Wing Collectibles, and Help for Kids Understanding Their Feelings about Moving. He is currently Senior Vice-President of Edina Realty in Minneapolis.



Public Relations Chuck Drometer

Chuck is a native of Cannon Falls and lived within 22 miles of the Red Wing Pottery for 57 years. He also has been a member of the National Society for 16 years.



He has taken part in many of the educational seminars: Stoneware Identification and The World of Miniatures, being two of them.

Dale Erickson and Chuck started the Cannon Valley Red Wing Collector Club, which now has about 110 members and is a very active club.

Hope to see you all at the convention. If you have any good suggestions please let me know about them. I do need help.

Historian Corrinne Reed

Corrinne and husband, Lowell, live in West Des Moines, Iowa. In addition to Red Wing, they belong to the Sleepy Eye Club and the Illinois Collectors of Pottery & Stoneware club. Collectors of stoneware since the last '70s, they have gradually narrowed their collecting to Red Wing, Sleepy Eye, Illinois, Blue & White, and have a special interest in Iowa-made pottery and stoneware.



While Lowell is enjoying his third year of retirement from teaching and coaching, Corrinne is still teaching junior high science

in Des Moines.

In fulfilling her duties as historian for the Red Wing Collectors Society she collects, files, and stores any memorabilia pertaining to the RWCS. This includes maintaining a library of educational seminar video tapes available for check out to members of the RWCS. There is a \$5 handling charge per tape, payable in advance. The tapes are to be returned within 30 days. Checks should be made payable to the Red Wing Collectors Society, Inc. Corrinne is presently previewing all of those taped to detect any possible problems.

For insurance purposes, she recently completed a computerized 20 page inventory of everything in the historian's possession. In the process of doing that she discovered items that are needed to give a complete history of the society. The following is a brief list of what is needed. Anyone able to donate any of these items please contact the historian at 2808 Vine Street, West Des Moines, Iowa 50265, (515) 225-3024.

1. RWCS commemoratives for 1977, 1978, 1979 & 1980.
2. RWCS newsletters from July 1994 to present.
3. Chapter commemoratives (only have Gopher '90, '91, '92; Rocky Mountain '92; and Southwest Red Wingers '83-93)
4. Chapter newsletters and/or minutes of meetings (Currently only receiving from Golden State, Gopher, and Iowa)

In addition to her historian duties, Corrinne is president of the Iowa Chapter of the Red Wing Collectors Society, and co-editor of the Iowa Chapter newsletter, "Inside Iowa".

Membership Committee Debbie Olson

I joined the Red Wing Collector's Society in 1981. During the ensuing years I have met a lot of interesting people and developed some very important friendships. The Red Wing Collector's Society Convention has become a meeting place for people from various backgrounds and interests to share information.



My husband, Barney, and I live in Galesburg, Illinois. We have four children. I keep myself busy by attending auctions to look for Red Wing Pottery, Watt Pottery, Primitive Furniture, and various other antiques to decorate our home with, as well as to resell.

Commemorative Committee Larry Roschen

Larry and Kathy Roschen began collecting Red Wing pottery in 1980. They became interested in Red Wing while helping his parents find pieces of Iris dinnerware to complete their set. It soon became a competitive but cooperative rivalry between father and son to outdo the other in the search for Red Wing. It was great fun and helped make a good relationship even better.



Larry is a pharmacist at a Twin Cities hospital and Kathy is a homemaker. They have two young sons, Brett and Scott. They have an extensive collection of Red Wing dinnerware, primarily salt & peppers, teapots, pitchers and dinner plates. They also enjoy stoneware — only wish it were more affordable.

Convention Committee Dave & Diane Hallstrom

With both of us being Red Wing natives, we have always loved and taken pride in our city and its' history. However, collecting Red Wing Stoneware has only been a part of our lives for the last 15 years.

Our first introduction to Red Wing Pottery was a gopher on a football, given to us by Diane's father, which had been in his family for many years. Shortly after that, several friends talked Dave into taking a trip down to the stoneware dump to dig through mountains of shards hoping to find an unbroken treasure. From that moment on, we were hooked. The hobby had begun.

Since that time, our collecting interests have grown to include lunch hour pieces, early salt glaze, rare and unusual pieces, and Red Wing memorabilia.

Being convention chairpersons the last four years has been a learning experience for us by meeting new friends from all over the United States who come to the convention.



Jeff & Paulette Floyd Interim Auction Committee & "East" Representative

Jeff & Paulette currently live in Yorkville, IL, a small farming town about 60 miles Southwest of



Chicago. Interest in Red Wing started in 1985 on a trip to the Kane County Flea Market. We saw a 5 gallon Wing Beehive and had to have it. Then we were hooked. Our collecting now focuses on Advertising pieces and Grayline.

In the day to day world, Jeff is in the Residential & Commercial Upholstery Business. Paulette is an Executive Secretary at the Farmers Insurance Group Midwest Regional Office. They have two daughters Ashley & Aarika who are starting to enjoy Red Wing too!

"West" Representative Sandy Short

Little did Sandy & Con know when they started married life with a set of Round Up dinnerware that they would become avid (fanatic ?) collectors of Red Wing stoneware. In 1975 Con & son Dave glued a broken 25 gal. crock together and the search for more was on. They now look for salt glaze and ND advertising pieces.

Sandy is a high school Chapter I teacher. She is membership chairman of the ND Pottery Collectors Society and the western RW board member at large. She and Con and Rich Cronemeyer conduct the new member orientation sessions.



Vice President Rich Cronemeyer

Rich Cronemeyer is a charter member of the RWCS. He has presented seminars at past conventions on canning jars, catalogs, and spittoons/cuspidors. He has collected Red Wing stoneware since finding a 5 gallon Large Wing crock in his grandmothers basement in 1968. He particularly enjoys collecting spittoons and sewer pipe pieces. Rich is a physician practicing diagnostic radiology in Kansas City.



Secretary Ann Busse

Ann Busse is a resident of Sycamore, IL and is a speech instructor at Kishwaukee College, Malta, IL. She joined RWCS in 1985, after attending Dick Houghton's auction on the Sunday after the convention. Interest started in stoneware collecting after buying a 3-gallon salt glaze "torpedo" jug at an auction, and really became "addicted" to Red Wing after seeing all that stoneware at Dick's auction.



Treasurer Jerry Flicek

Born in Rice County near New Prague, Minnesota. Direct descendent of first settlers in New Prague area. Graduate of New Prague High School. First job was trapper warden for Division of Game and Fish.



Enlisted as private in the United States Air Corps in January 1942. Retired as Colonel USAF in 1972. Internationally recognized missile and space pioneer air crew member during World War II, commanded several military organizations involved in missile and space research and development.

OFF STREET PARKING

EXTENDED CONVENTION HOURS



AL'S ANTIQUE MALL

1314 OLD WEST MAIN STREET
RED WING, MN 55066
(612) 388-0572

Located 1 Block Off Highway #61

12,000 Square Feet 100 Dealer Spaces

Open Daily
Summer: Mon.-Sat. 9-6; Sun. 10-6
Winter: Mon.-Sat. 9-5; Sun. 11-5

"Come Join Us In Red Wing"

Extended Convention Hours

OFF STREET PARKING

EXTENDED CONVENTION HOURS

About other chapters ...

Rocky Mountain

The Rocky Mountain Chapter currently has 22 active members. We meet every two months and we do produce a yearly commemorative. We also have a summer picnic and a Christmas Party every year.

If someone is interested in joining our chapter, they may contact Bob Davis at 414 N. Loomis, Ft. Collins, CO 80521, (303) 221-1585.

Cannon Valley

Tom Trulen
612 E 7th St.
Red Wing, MN 55066
612-388-6337

Member total: 110

Activities: • summer picnic • monthly meeting held 1st Tuesday every month - in Cannon Falls, Red Wing, and Northfield • window displays during convention week (Goodhue County National Bank and Josephson's Clothing), • Christmas party, • helps convention committee with various jobs during convention.
Commemorative: Yes - yearly

Iowa Chapter

Corrinne Reed, President
2808 Vine Street
West Des Moines, Iowa 50265
(515) 225-3024

The Iowa Chapter is dedicated to the collection and preservation of Red Wing, Iowa, and other American pottery and stoneware.

The chapter was founded in 1979 and holds the distinction of being the first state to have received a charter from the national society. However, having become inactive after just a few years, it was finally reactivated in 1992 by the present officers.

Current membership is 120 household memberships representing 218

members.

Yearly activities include the publication of a newsletter in January and August, annual publication of a list of chapter members of those giving permission to have their names listed, and production of an annual commemorative.

The three commemoratives produced so far have been miniature Thomas E. Jordan Colfax Mineral Water jugs, Mennig & Slater Choice Table Relishes churns, and Ft. Dodge Ice Water coolers.

Meetings in April, July, and October include a variety of activities such as distribution of commemoratives, show and tell, silent auctions, out-of-trunk show and sales, guest speakers, and pot luck dinners. The annual chapter business meeting is held at convention in July at the time assigned for all chapter meetings.

Any RWCS member is welcome to belong to the Iowa Chapter. Dues are paid on an annual basis and are \$10 per household membership. Anyone wishing to join the chapter may do so at the annual chapter business meeting at convention, or simply contact the chapter secretary/treasurer, Lowell Reed, 2808 Vine Street, West Des Moines, Iowa 50265, (515) 225-3024.

Nebraska

Donna McGilvrey
14742 Madison Circle
Omaha, NE 68137
402-895-9480
Inactive

Wisconsin

Pete Pavloski
3811 10th St. So.
Wisconsin Rapids, WI 54494
715-423-4683

Members: 25

Activities: 1 or 2 meetings

Commemorative: yes, 1992 was the 1st one

Plan to attend the Wisconsin Chapter Meeting at the Red Wing Convention.

Southwest Redwings

Kent Williamson
101 W. Wood Dr.
Phoenix, AZ 85029
(602) 789-0764

Members: 32

Activities: 10 monthly meetings held last Monday of the month that typically includes a program speaker-presentation, club raffle, Bring & Brag, and refreshments. Meetings are held Jan., Feb., Mar., Apr., May., Aug., Sept., Oct., Nov., and Dec.

Other activities are winter picnic and a club sponsored antique hunting trip.

The last 4 years one of our regular scheduled meetings was at the summer home of member Bill Close in Payson, AZ, always an enjoyable trip and meeting.

December is topped with the annual Christmas party/dinner with presentation of the years commemorative to qualified members.

We also have a newsletter which is published 10 times a year, of which I am the editor. This year we are also doing the National Red Wing convention button.

Commemorative: yes, each year since the chapter founded in 1982.

Person to contact for membership: Mary Ann Cleary, Membership, 2746 S. Pennington, Mesa, AZ 85202, (602) 820-4526.

Officers 1995: Kent Williamson, President; Ken Olson, vice President; Bev Winchell, Secretary; Gene Stanley, Treasurer; Diana Schneeman, Historian.

Puget Sound

The Puget Sound chapter of 40 members is mainly a western Washington club but we do have 2 members that hail from Warden which is east of the Cascades. The club was established in May 1988 and we meet on the first Sunday afternoon every other month. Members take turns and host the meetings in their homes, Refreshments and fellowship follow the business meetings which usually last from 1 to 2 hours.

We have produced a different commemorative every year since 1988. Last years endeavor, a birch bark canoe, was gratis to the members in appreciation of their club loyalties. In 1995 we hope to create a cherry band pitcher. All our commemoratives extend Christmas greetings, indicate the year and the chapter's name.

Highlights of our meetings consist of an educational period, usually about Red Wing products but not always limited to that. Our members are diversified in their collection and we have discussed Longaberger basketry, Heisey glass, even the collectibles of the 1962 Seattle's Worlds Fair. There is a show & tell period followed by a raffle consisting of a Red Wing article donated by the host/hostess. The proceeds of the raffle go into the treasury.

As you can see our meetings are fun events and turnouts are usually well attended. For further information about this "Great Northwest Chap-

ter", call (206) 858-7907 or write Reg Doty, 3402 47th St. Court NW, Gig Harbor, WA, 98335-8230.

Golden State

Golden State Red Wing Chapter
30 paid members

5-6 meetings per year in northern California plus several club activities.
Commemorative: yes.

Membership contact: Mike Robinson, sec./treas., 1970 Bowman Rd., Stockton, CA 95206-9654, (209) 463-5179/466-7915, FAX 209-466-7918. Bruce Cameron, President, 18166 Carmel Dr., Castro Valley, CA 94546. (510) 537-0325.

Gopher

Red Wing Collectors Society Inc.

The Gopher Chapter was established October 7, 1978 and has remained active since that time. Presently, the Chapter has 85 members and meets each month, either on Saturday afternoons or Thursday evenings. Meetings are usually in the Twin Cities, but have occurred from St. Cloud to Frontenac. Typically held at members' homes, meetings are occasionally done at a public place such as a restaurant or library.

The main purpose of our meetings is to socialize with friends and fellow collectors. Our informal format allows plenty of time to ask questions and enjoy casual conversation with other collectors. A typical meeting will include a business meeting, a silent auction, Show & Tell time and an infor-

mational presentation by the host or another member. The December gathering is a holiday pot luck social event and August's get-together is a family picnic at which we share convention stories and show off our latest finds. Members receive a 2-page Monthly Chapter newsletter which includes minutes of the previous meeting, location of the upcoming meeting (along with directions and a map) and other announcements and information.

Any RWCS member is welcome to belong to the Gopher Chapter. Chapter dues are paid on an annual basis (due January of each year) and are \$12 for an individual membership or \$15 for joint membership (husband/wife).

Members are also entitled to purchase the annual Gopher Chapter commemorative.

Past commemoratives include: Gopher on a stump, Little Brown Jug, a spongeware advertising bowl and a miniature sewer pipe. This year's commemorative is a spongeware beater jar, sized and decorated to match last year's hanging salt box.

Please consider this your invitation to join the Gopher Chapter. Current officers include: President John Sagat; Vice President Gary Antoline; Treasurer Kathy Allen; Secretary Deanna Juergens; Membership Jay Juergens; Librarian Gerry Nehotte.

For membership information, contact: Jay Juergens, 1066 Vessey Road; Bloomington, MN 55437-2765; (612) 881-1676.

Membership Information

The Red Wing Collectors Society, Inc., is an organization which promotes the collecting of Red Wing and American pottery. Founded in 1977, the Society has members in 48 states and Canada. Membership is open to all persons interested in collecting American pottery/stoneware.

The highlight of the Society year is the annual 3-day convention held on the second full weekend of July in Red Wing, Minnesota. Education is a special component of the convention with a full day being devoted to seminars on Red Wing and U.S. pottery. Displays with an educational motif are also set up for viewing during the convention. Activities of the convention include a show and sale, auction, banquet, business meeting, and other special events.

A special commemorative piece is issued for each convention. These highly sought after pieces are made in limited quantity and are available only to Society members.

The Red Wing Collectors Society also publishes a newsletter issued 6 times per year. Each issue contains feature articles, a section on state chapter activities, information on new finds in collecting and a place for ads.

State chapters of the Society have been organized in several states including Arizona, California, Colorado, Iowa, Michigan, Minnesota, Nebraska, Washington and Wisconsin. These chapters meet several times throughout the year.

Membership to the Society is \$15 per year. Additional immediate family members living at the same address may be included at no additional charge. Family members wishing to purchase their own convention commemorative, however, must purchase individual memberships. One membership per person. Contact the Red Wing Collectors/Membership Committee c/o Debbie Olson, PO Box 184, Galesburg, IL 61402-0184.



A fine selection of more desirable **RED WING** pieces: Pantry jars, beater jars, adv. pcs., salt glaze, churns, etc.

ANTIQUES ORONOCO

ON HIGHWAY 52 AT ORONOCO, MN

We invite you to visit our antique shop located on **Highway 52 - 6 miles north of Rochester** in Oronoco, MN. We think you will agree our shop is one of the finer antique shops.

Hrs.: Tues.-Sat. 9:30-5:30 Sun.: 11-5
Running late? Call ahead **507-367-2220**

Randlys

GOOD FOOD ... SERVED QUICKLY!

Complete Breakfasts

"Omelets Our Specialty"

- 15 GREAT SANDWICHES
- COUNTRY FRIED CHICKEN
- SALAD BAR AND SOUPS
- HOT STUFFED POTATOES
- CONES AND SUNDAES

Group Prices Available

Seating for 120	709 MAIN ST.	Mon.-Sat. • 6-11
Bus Parking	RED WING, MN	Sunday • 7-11
	612-388-1551	

Hundreds Enjoy Potters' Outing

Reprinted from The Daily Republican, June 11, 1919

Steamer G.W. Hill docks at St. Paul at 3:55 o'clock with 1,064 passengers.

A delightful event

Boat will wait at Hastings tonight until after arrival of train from Red Wing — crowds join Red Wing excursionists at Diamond Bluff, Prescott and Hastings.

Special to The Republican:

ST. PAUL, Minn., June 11: (4 p.m.) — The steamer G.W. Hill, with 1,064 excursionists on board, docked here at 3:55 o'clock this afternoon. Difficulty was experienced in landing the excursion-

ists, owing to interference of a barge, which was being loaded at the docks at the same time. The boat will leave St. Paul at 6:30 o'clock, but will wait for the evening train from Red Wing at Hastings.

The steamer left Red Wing at 8:27 this morning and reached Diamond Bluff, Wis., at 9:40 o'clock. At this point 61 passengers boarded the boat. At Prescott, which was reached at 11:15 o'clock, 166 excursionists joined the party. Hastings was reached at 11:35 o'clock and here 75 passengers boarded the boat. Everyone on

board is happy and well.

Prescott at 11 a.m. Special to The Republican:

Prescott, Wis., June 11: — over 200 excursionists, many of them from the rural districts, boarded the Potters' excursion steamer G.W. Hill this morning. The boat docked shortly after 11 o'clock.

100 join party Special to The Republican:

Hastings, June 11. — The Red Wing Potters' excursion crowd on the steamer G.W. Hill was increased by nearly 100 at this point. Young people predominated. The boat left here for St. Paul at 11:30 o'clock.

Big Excursion Day.

Several hundred excursionists, today, are enjoying an outing on the steamer G.W. Hill, from Red Wing to St. Paul and return. The big excursion classic of the season, given under the auspices of the Potters' Benefit association.

At 7:30 o'clock the people began to gather on the levee and at 8:30

o'clock, when the gang-plank of the palatial steamer was pulled up from the docks and the boat set sail, there were fully 700 on board. The Potters' excursion was planned last winter, when the temperature was 30° below zero and June 11 was the date set for the outing. And the committee could not have selected a more ideal day for an outing. The weather man was with the Potters and provided a perfect June day, bright sunshine and summer breezes, with the temperature at 74 degrees.

Many Join Party.

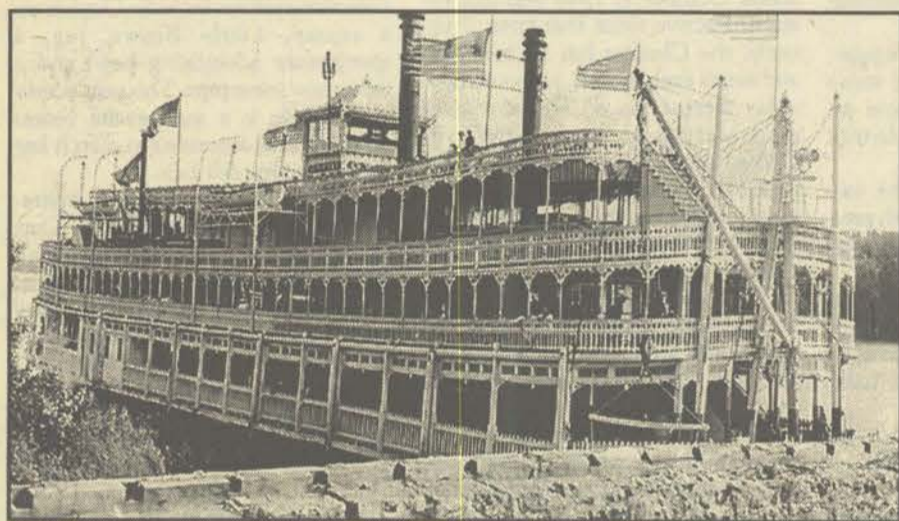
"There goes a human cargo of fun and frolic," said a business man on the levee this morning as he with scores of others watched the happy crowd waving good-bye to those who were compelled to remain at home. As the boat proceeded up stream scores of young people tripped into a two-step and the day's festivities were in full swing.

The Potters and their friends will be joined at St. Paul and Hastings by scores of other excursionists and it is expected that the attendance will be swelled to over 1,200 people. About 75 young people boarded the afternoon train

for St. Paul and will make the return trip on the boat tonight. It is estimated that fully 200 excursionists from Red Wing will board the boat at Hastings tonight and enjoy the "moonlight" trip back to Red Wing. The steamer will be held at Hastings this evening, until after the arrival of the Milwaukee passenger train which leaves Red Wing at 8:05.

"Who's your friend?" was passed around the boat on the trip to St. Paul this morning and it didn't take long for the crowd to become acquainted. Dancing was the chief amusement for the young people, while others spent the time pleasantly at cards and other diversion. Like "Tipperary," it is a long way to St. Paul, via the Mississippi, but the excursionists were in the best of spirit and the time passed swiftly. There was something doing every minute on the trip and the Potters' entertainment committee was on hand to see that all on board were taken care of properly and were enjoying themselves. At noon the big picnic lunches were enjoyed.

The boat should return to Red Wing at about midnight.



G.W. Hill excursion boat.

**CANNON VALLEY
RED WING
COLLECTORS
CLUB**
Welcomes Red Wing
Collectors Society
Members to the
1995 Convention!
Have A Great Time!

Village General
Antiques
Country Primitives +
General Line
Furniture + Accessories
Quilts + Rugs
Miesville
Between Hastings &
Red Wing on Hwy. 61
Open Daily 10-5
612-437-8150

**Prescott
ANTIQUUE
MALL**
262-3426 24 dealers!
Open 7 days a Week
Downtown Prescott,
Wisconsin
Next to the bakery.

**LIBERTY'S
RESTAURANT
& LOUNGE**
Decor of Red Wing
Yesteryear.
**Welcome
Collectors!**
Open Daily 8 a.m.
to 12 Midnight
388-8877
3rd & Plum St.
Downtown Red Wing

Collect Some Of These While You're At It.

You're a collector. You appreciate a thing of value when you see it. You judge it by the weight. The condition. And of course, the color.

At Treasure Island Casino & Bingo, stacks of valuable chips are indeed collector's items. And, believe it or not, they are not all that rare.

Come on out to the Island and explore. We have beautiful restaurants. A lovely marina on the banks of the Mississippi. Over 1250 hot slots. Over 50 2-4-6 deck blackjack tables. High stakes bingo. And your favorite cocktails throughout the casino.

Treasure Island. A rare Island in Minnesota where treasures of great value can be found.



Welcome Red Wing Collector's Society.

Red Wing Boyhood Friends Instrumental in Opening Iowa Sewer Pipe Plant

by Corrinne Reed



E.G. Nelson at the time What Cheer plant was built

E. G. Nelson and John Nelson were friends from boyhood. Even though they shared the same last name, they were no relation to each other. Both, however, were born in or

near Red Wing, Minnesota. E. G. was born in 1872, and reared on a farm in Goodhue county, while John was born in 1875 in Red Wing of Swedish immigrant parents, Aaron and Emily Nelson. Not a farmer, John's father, Aaron, worked as a millwright for the Charles Betcher Lumber Co. As was customary at the time, rural children often stayed in town with other families for extended periods while attending school. That was the beginning of a long friendship between the two, that would lead finally to the two of them becoming instrumental in the opening of the What Cheer Clay Products Sewer Pipe Co. in What Cheer, Iowa — one as a potter, and the other as the builder, secretary, and manager.

E.G. Nelson's first undertaking in the business world was in railroad construction work, whereupon he became a foreman in less than two weeks. Later, employed by the Red Wing Sewer Pipe Co., he worked in various positions from unloading clay to taking charge of various departments. By the age of 26, he was in the contracting business in partnership with J.C. Johnson of Red Wing. He was also a member of the Lillyblad-Nelson Construction Co. doing cement work. At the same time, he was head of Nelson & Anderson Plumbing and Heating Co. He organized the Nelson Construction Co. about 1908, and dedicated his full time to large construction work — mainly factories, schools, and libraries. Moving to Mason City, Iowa, he built brick and tile plants at Mason City and Lehigh, Iowa, as well as Austin, Minnesota. While building a brick and tile plant at Belle Plaine, Iowa, he became interested in What Cheer clay and asked his friend, John, to test it for him.

John Nelson (most people called

him "Johnnie") had begun working in the Red Wing Stoneware Company in 1888 as a lad of 13. Working there for 23 years, he did everything from running errands to being an apprentice who learned the trade from some of the early Red Wing "Clay Giants." He did piece work, cast work, jigger work, and "threw" pieces on the wheel. According to the 1894 Red Wing City Directory, he was by then working along side such well known Red Wing potters as George Hartnagel Jr., Otto Olson, and Emil Shotola.

By age 19 he had not only built a

sibly have been that of the Red Wing Sewer Pipe Co.?) This meant the company would be able to furnish fire proof material as nearly absolute as could be obtained.

The What Cheer Clay Products Co. was built by E.G. Nelson and organized with him as its secretary and general manager. Opening day, June 16, 1912, at exactly noon in the engine room, E. G. gave the signal for the machinery to be started, and the company's 16 kilns began operating. The company owned 160 acres of clay and coal, the largest clay pit in the world. While fire clay beds generally run from 3-6 feet in thickness, the What Cheer beds ran from 15-60 feet, and the company had a 4-7 foot vein of its own coal, the equal to that of any in Iowa.

It was known as early as 1843 that there were deposits of coal

in the What Cheer area. The locality was marked on government surveys of 1844 to 1846 as "The Coal

Continued on page 12



Sample wares from What Cheer clay made by Johnnie Nelson and displayed in the window of Mitchell's Clothing Store in What Cheer.

home with a kiln in the back yard for himself, but a home next door for his parents as well. Although slightly remodeled, his parent's home at 623 Jefferson Street and Johnnie's at 627 Jefferson both still stand in Red Wing — minus the kiln in the back yard. Living in the upstairs of Johnnie's house in Red Wing at one time was his friend, E. G. Nelson.

Johnnie did test the clay for his friend, E.G. According to the "What Cheer Patriot" of April 11, 1912, Johnnie made up sample wares, burned them in his own kiln in Red Wing, and they were displayed in the window of Mitchell's Clothing Store in What Cheer, along with brick and tile pieces, and a lump of What Cheer clay. Johnnie stated it was the finest clay he had ever worked with.

At one time, barrels of clay were sent to Sheffield, England, where tests showed the clay suited to the manufacture of table china and kitchen ware. Finished products were returned to show the clay's excellent quality, but the manufacture of that type of product was never pursued.

According to a prospectus put out by the company, What Cheer fire clay was found to be one of the most refractory clays that had yet been tested. Its fusing point was found to be several hundred degrees above that of other well known material. (Could that material pos-



Johnnie Nelson, Red Wing potter, and friend of E.G. Nelson

Red Wing Pottery Miniatures
Porcelain Dolls
Snow Village
Gifts — Crystal

A Small World
 Pottery Place
 Red Wing, MN
388-2277

Welch Trading Post

Antiques & Collectibles
 10 miles North of Red Wing on Hwy. 61 to Co. Rd. 7 Welch, MN

Hours during convention week
 Sat. & Sun. 10 a.m.-6 p.m.
 Or — By Appointment
 Lots of pottery and large assortment of miscellaneous antiques.
Phone 612-388-2993
 G. & V. Rahman

Red Wing Collector's Society Commemoratives

Year	Description	No.	Cost
1977	Crock	250	\$7.50
1978	Jug	350	4.00
1979	Churn	400	10.00
1980	Bowl	400	10.00
1981	Min. Jug	750	8.00
1982	Mug	697	10.00
1983	Canning Jar	1,026	12.00
1984	Leaf Water Cooler	1,161	12.00
1985	#6 Ice Water Cooler	1,750	12.00
1986	Acid Pitcher	1,982	12.00
1987	Red Wing, Wing	2,500	12.00
1988	Plate	2,550	12.00
1989	Gray Line Pitcher	2,700	12.00
1990	Fancy Jug	3,550	12.00
1991	Pantry Jar	3,560	12.00
1992	North Star Jug	4,260	15.00
1993	Buttermilk Feeder	4,820	15.00
1994	20# Butter Crock	5,660	15.00

Chronology of Pottery Manufacturing in Red Wing

John Paul	1860
Philleo Potteries and Terra Cotta Works	approx. 1863-1880
Red Wing Stoneware Company	1877-1906
Minnesota Stoneware Company	1883-1906
North Star	1892-1896
Union Stoneware	1894-1906
(organized to sell the ware of the 3 companies listed above)	
Red Wing Union Stoneware Company	1906-1936
(This was the combination of the Red Wing and Minnesota Stoneware Companies)	
Name changed to Red Wing Potteries	1936
Closing of pottery manufacturing	1967

PARKWAY MOTEL
Restaurant Next Door

Welcome Collectors
Jim & Kay Sherman

Call For Reservations
612-388-8231

Parkway MOTEL
 3425 HWY. 61 NORTH
 RED WING, MN 55066

ANTIQUES ACCESSORIES

The River Peddler

Lower Level
St. James Hotel
Red Wing
11:00-5:00 Daily

The Sheldon
 Red Wing's Historic Performing Arts Theatre

Chanhassen Dinner Theatres' stars of the long-running hit *I Do!* headline in this romantic collection of timeless love songs and stories about people and their passions. The show features classics like "Let Me Call You Sweetheart," "Makin' Whoopie" and other gems.

Friday, July 7, 8 p.m.
Saturday, July 8, 3 and 8 p.m.
 \$12 Adults \$9 Students

LOVE LETTERS
 BY A. R. GURNEY

Don't miss this compassionate story of Melissa and Andy and their magnetic attraction during a 50-year friendship. Filled with truth and humor, the drama follows the characters from children to aging adults.

Thursday, July 6, 3 p.m.
 \$12 Adults \$9 Students

612-388-2806
or 1-800-899-5759
 Downtown Red Wing at Third St. and East Ave.



- Indoor Pool/Whirlpool
- Continental Breakfast
- Suites - Jacuzzi, 3 Bedroom, Kitchenette
- Cannon Valley Trail Nearby
- Showtime/ESPN
- 36 Single & Double Rooms
- Treasure Island Casino (10mi)
- 60% Non-Smoking Rooms
- Restaurant Adjacent

Hwy. 61 and Withers Harbor Dr.
Red Wing, Minnesota 55066
612-388-1502

(Adjacent to Historic Pottery Place)

RON TLOUGAN, Manager

TOLL FREE RESERVATIONS:
CALL 1-800-251-1962

WELCOME COLLECTORS

Elks Members...

Collect the
Second Drink
on us...

FINE DINING

Thursdays & Fridays
Mexican & American
Come collect some new
Elk Friends...

ELKS CLUB

Red Wing
Fourth & Plum Street

4TH Street ANTIQUES

106 South 4th Street
Cannon Falls,
MN 55009

20 Minutes West of
Red Wing on #19

507-263-7249



HAY CREEK VALLEY
Campground

AND
Dressen's
OLD WESTERN

SALOON

Restaurant specializes in buffalo burgers!

Located 6 Miles South of Red Wing
on State Highway 58
Route 4, Red Wing, Minn. 55066
612/388-3998

Boyhood Friends continued from page 11

Banks". The stream that meanders between the hills became known as Coal Creek. By 1880 the town had a population of a few hundred. The next 3 years there was a rapid development of the coal industry, and the population jumped to 3,709. It became one of the coal mining centers of Iowa. Including neighboring mining camps, it reached a population ranging from 4,000 to 8,000. However, as the larger mines were depleted the population dropped.

E. G.'s becoming interested in What Cheer clay and talking his friend, Johnnie, into testing it for him, led to Johnnie getting fired by the Red Wing Stoneware Co. The company didn't take kindly to one of their employees testing clay for a competitor. Especially since the clay was sent directly to their plant!

Although he was already working for E. G. by 1911, it wasn't until April 1, 1912, that Johnnie, his wife, and children moved all their worldly possessions (including some molds of items made by the Red Wing Stoneware Co.) in a rented railroad boxcar to What Cheer, Iowa. He worked at the What Cheer Clay Products Co. south of town until 1917 when he finally opened a pottery of his own along Coal Creek.

Johnnie's only living son, Earl,

George Hehr, and George's father, Gottlieb, a German mold maker and designer brought to Red Wing from Canton, Ohio, in 1883. Gottlieb made the first molds in Red Wing, and his son, George, continued doing the same until his retirement in 1941. These two men had shared their knowledge and skill of mold making and design with Johnnie while he worked in Red Wing. Earl was also introduced to George A. Cook and his father, George Cook, who had been plant foreman and plant superintendent about the time Johnnie left Red Wing. The elder Cook told Earl things about his father that Johnnie had never mentioned. One thing Earl remembered him relating was that whenever the company would get a special order for something unusual, the other potters wouldn't tackle it, but Johnnie would take it on and follow it from the time it was turned or molded, till it was glazed, and finally went into the kiln. George A. Cook, the son, went to Marshalltown to work in the plant there when the Red Wing Union Stoneware Co. purchased that plant in April of 1909, and Johnnie would visit him there.



Urn identical to one at W.C. Clay Products office in yard of Johnnie Nelson's pottery (Item 33). (White numbers on items were for identification purposes from the intended use of the original photo.) Also note Item 38, identical to urn shown on one of the covers of Red Wing Stoneware's 1894 catalog.



One of the covers of Red Wing Stoneware's 1894 catalog with urn (Item 38) from yard of Johnnie Nelson's pottery. Collection of Goodhue County Historical Society.

talked to this author about he and his father's trip back to Red Wing for Johnnie's mother's funeral in January of 1928. According to Earl, it was like "family reunion" time meeting with old pottery friends. Johnnie introduced his son, Earl, to his friend,

company's head until November of 1947 - the greater part of its history. Under his guidance it became the largest manufacturer of sewer pipe in the midwest, with some years having the demand exceed the production. By 1949 the plant produced

almost 20,000 tons of products including sewer pipe, wall coping, flue lining, septic tanks, drain tile, and clay fittings. At one time when there was a wave of drainage improve-

ment, large quantities of agricultural drain tile were made. As the need tapered off, drain tile became a minor item. Up to 25,000 tons of clay were dug in a year and hardened at 1,900 degrees from 5 to 10 days, using 12,000 tons of coal. After the

tile was "burned off", it took 5 to 6 days to cool in the kilns. A day was required to "draw" or empty one of the 19 kilns the plant had then. All tile 8 inches or bigger was stamped with the famous "What Cheer Frog". Each company had its own logo. According to Norman Reed, a ceramic engineer for the company and brother-in-law to the author of this article, law required that the tile be stamped, so one would know from where it came. What Cheer, once a coal center, had become a clay center.

to H. L. Northfield of Minneapolis. When he died in 1957, his son, H. L. Northfield Jr., became president, and another son, William Northfield, became executive vice president. In 1962 American Steel Foundries of Chicago acquired the company, and a new subsidiary, Griffin Pipe Products Co., was formed. This made What Cheer one of 26 ASF plants, and more were added by later expansion and diversification. Main ASF production had been railroad products. That same year the corporation name was changed from ASF to AMSTED Industries, Inc. The acquisition of the plant by Griffin Pipe Products was generally regarded in the community as good news, but in December of 1963, men were laid off, and effective January 15, 1964, the plant was closed because of "production limitations caused by obsolete equipment" - despite a 3 year modernization program that had occurred from 1958 through 1960. Thus ended the 52 year history of the What Cheer Clay Products Company begun by two boyhood friends from Red Wing, Minnesota.



What Cheer Frog stamped by law on all tile over 8 inches.

NORTH DAKOTA



POTTERY
COLLECTORS SOCIETY

Rosemeade - U.N.D. -
Dickota - W.P.A. - Messer
3 Tribes

DUES - \$10 Single

FOUR NEWSLETTERS -
ANNUAL CONVENTION

CLUB INFORMATION:
Sandy Short

Box 14
Beach, North Dakota 58621
Telephone: 701-872-3236

CONVENTION: June 7-8-9 - 1996
Bismark N.D.

GENERAL STORE in Cannon Falls



Antiques, collectibles, dolls, wicker, furniture, Tiffany lamps, oak curios, western & Native American, local and ethnic art.

Experience the past and the present . . . over 2,000 sq. ft. on Buster's Corner. (Formerly the old Lundberg Building)

507-263-3001