



“S/A What?”

Does this
crock disprove
the August
Sandberg
theory once
and for all?

Pages 10-12



Pottery Museum News 5	Collector Q & A: Jim & Jeanie Anderson 6-7	MidWinter GetTogether Photos 8-9, 15-16	2018 RWCS Financial Review 12
-----------------------------	--	---	-------------------------------------

RWCS CONTACTS

BUSINESS OFFICE

PO Box 50 • 240 Harrison St. • Unit #3
Red Wing, MN 55066-0050 • www.redwingcollectors.org
651-388-4004

EXECUTIVE DIRECTOR: STACY WEGNER
director@redwingcollectors.org
membership@redwingcollectors.org

NEWSLETTER

EDITOR: RICK NATYNSKI
PO Box 198 • Pewaukee, WI 53072
414-416-WING (9464) • newsletter@redwingcollectors.org

BOARD OF DIRECTORS

PRESIDENT: PAUL WICHERT
W247S7000 Sugar Maple Dr. • Waukesha, WI 53189
414-731-0218 • president@redwingcollectors.org

VICE PRESIDENT: RUSSA ROBINSON
1970 Bowman Rd. • Stockton, CA 95206
209-463-5179 • vicepresident@redwingcollectors.org

SECRETARY: ANGELA SHEFVELAND
905 Hawthorn St. • Red Wing, MN 55066
816-456-2524 • secretary@redwingcollectors.org

TREASURER: DAN BECK
2215 Hill Place SW • Rochester, MN 55902
507-398-6358 • treasurer@redwingcollectors.org

HISTORIAN: NANCY LAMBERT
17 Newcastle Lane • Bella Vista, AR 72714
785-691-7213 • historian@redwingcollectors.org

REPRESENTATIVE AT LARGE: DIANA BAILEY
PO Box 170 • Cedarburg, WI 53012
414-303-2691 • repatlargewest@redwingcollectors.org

REPRESENTATIVE AT LARGE: RICHARD NATYNSKI
N50 W25078 William Dr. • Pewaukee, WI 53072
608-617-7424 • repatlargeeast@redwingcollectors.org

INTERIM AUCTION MANAGER: BRUCE SELFRIDGE
29410 River Road • Cloverdale, CA 95425
707-477-8968 • auction@redwingcollectors.org

COMMEMORATIVE MANAGER: BOB MORAWSKI
2130 S. Ridgeway Dr. • New Berlin, WI 53146
262-853-8269 • commemorative@redwingcollectors.org

INTERIM EDUCATION MANAGER: DAVID HOFFMAN
2821 Lynx Road • Wausau, WI 54401
715-355-8521 • education@redwingcollectors.org

EVENT SUPPORT PERSONNEL

PRE-REGISTRATION: HEIDI HAHLLEN
608-712-9335 • hshahlen@tds.com

SHOW & SALE: GAIL & MERV PECK
402-721-5721 • gpeck1@neb.rr.com

DISPLAY ROOM: TYLER GREEN
display@redwingcollectors.org

KIDSVIEW & YOUNG COLLECTORS: VACANT
kidsview@redwingcollectors.org


FROM THE EDITOR

When I work on articles for the *RWCS Newsletter*, I always aim to make them as complete as possible and not leave anything out. I'm usually proud of my research, as I often uncover information that hasn't appeared in the newsletter or any other Red Wing-related publication.

This was the case with the article on Seaman's Patent Butter Carrier that appeared in the February issue. Finding that patent drawing in the U.S. Patent Office archives was pretty exciting; I thought I really nailed the article. But then, just a few days after the issue went to print, RWCS Member Jeff Meyers ironically posted a photo of his 5 lb. "S.C. Seaman Fancy Dairy Butter, Clinton, Iowa" advertising butter crock on Facebook. It would have been a perfect addition to the article, as Seaman ordered the crocks for his grocery store and used the wooden butter crate to safely transport them. I sure missed the boat on that one!

Such is the life of a researcher...you never know what might pop up after an article is printed. At least I'm able to print updates within a couple months time. As the authors of Red Wing books know all too well, reprinting a 200-page publication to include new discoveries isn't as simple. Even when a new volume is released, information can still be omitted. Take the *Clay Giants* series by RWCS Hall of Famer Lyndon Viel, for example. A pioneer in researching Red Wing, his groundbreaking books still help educate collectors to this day. But if he was still alive, I'm sure he'd love to release a new book to cover new findings and fix a few things. (We address one of them in this issue, as you'll read on pg. 10.)

Anyway, a big thanks goes to Jeff for bringing his butter crock to MidWinter so I could take a picture of it and include it here. Speaking of MidWinter, having the event at the Isle Casino Hotel in Bettendorf, IA ended up being a great decision. It was a nice facility and all these weeks later I'm still yearning for those little cheese-stuffed mushrooms that were served at the Friday Night Member Meet Up. Another big thanks goes to RWCS Member Bob Shaw, who encouraged the MidWinter Location Committee to give the venue a look a couple of years ago!



Rick Natynski, Editor



IN THIS ISSUE

3	News Briefs, About the Cover	10-12	Has the S/A Mystery been Solved?
4	MidWinter Review, Youth Programs	13	2018 RWCS Financial Review
5	Pottery Museum of Red Wing News	14	Classified Ads
6-7	Collector Q&A: Jim & Jeanie Anderson	15	More MidWinter Photos
8-9	2019 MidWinter Photos	16	2019 MidWinter Jaw Droppers

Primary membership in the Red Wing Collectors Society is \$35 annually; associate membership is \$15. There must be at least one primary member per household in order to have an associate membership. Members can pay for up to two years when renewing their membership. Contact the RWCS Business Office for additional details.

The Red Wing Collectors Society, Inc. Newsletter is published five times a year by the Red Wing Collectors Society, Inc. 240 Harrison St. • Unit #3 • Red Wing, MN 55066
Phone: 651-388-4004 • Fax: 651-388-4042 • www.redwingcollectors.org

Postmaster: Send address change to: Red Wing Collectors Society, Inc. Newsletter
PO Box 50 • Red Wing, MN 55066. • USPS 015-791; ISSN 1096-1259.

Copyright © 2019 by the Red Wing Collectors Society, Inc. All rights reserved.
The Red Wing Collectors Society, Inc. does not guarantee the accuracy of articles submitted by individual members.

Licensed to beaubrewer1977@gmail.com. Copyright Red Wing Collectors Society



CONVENTION PREVIEW

JULY 12-14 – RED WING, MN

Please visit the RWCS website to learn about our new Convention venue – River Bluff Education Center. It includes a map, directions and the link to a video tour given by RWCS Executive Director Stacy Wegner. The Convention schedule, along with individual event pages, cover when and where events are happening. As always, all Convention departments are looking for volunteers to help out before and during Convention Week. Whether you have an hour available or a whole day, your time is much appreciated. Please contact the RWCS office or visit the “Volunteer” tab on the Convention page to sign up.

RWCS GEAR AVAILABLE AT CONVENTION!

New apparel including embroidered caps, hoodies and insulated cups will be for sale at Convention this summer. A newly designed “Collector” T-shirt will also be available! The apparel table will be stationed near registration, and all profits will support the RWCS.

MEMBER MEET UP & SCAVENGER HUNT

The Convention Member Meet Up will be held immediately following the Annual Business Meeting on Friday, July 12 at River Bluff School. It will include trivia, door prizes, food and beverages. Scavenger Hunt details will be available on the RWCS website and in the *RWCS Convention Program*, which will be mailed to you in June. Find the locations and bring your completed sheet to the Member Meet Up. Fun prizes will be awarded!

SHOW & SALE – SATURDAY, JULY 13

The 2019 Convention Show & Sale has limited availability and tables are sold on a first-come, first-serve basis. All sellers must complete a new ST-19 form with their contract. **Because of the limited entrance access to River Bluff, all sellers will be assigned a specific move-in time, which will be shared via e-mail once the floor plan assignment is complete.** Questions? Please contact Show & Sale Chair and RWCS Hall of Famer Gail Peck at gpeck1@neb.rr.com.

CONVENTION DISPLAY ROOM NEWS

If you've always wanted to set up a Stoneware, Art Pottery, Dinnerware or Memorabilia display at Convention, make 2019 your year! Entries in these categories are given a 2019 RWCS Commemorative and winning displays are awarded a Special Commemorative. We've also added a new category – Mixed Media. This can include entries like paintings, photography, quilts and videos. Entries in this category do not receive a Commemorative, but the winners are awarded a Special Commemorative. Contact Display Chairperson Tyler Green at display@redwingcollectors.org with questions or if interested in participating.

RWCS SEEKING INTERIM AUCTION MANAGER FOR 2020 CONVENTION

Due health reasons, RWCS Auction Manager Scott Hardman has resigned from his position. On behalf of the RWCS, we thank you, Scott, for all your time and commitment to the RWCS. We wish you the best with your health and look forward to seeing you at a future RWCS event! A big thanks to past Auction Manager Bruce Selfridge, who has agreed to fill in for this summer's auction. We're still looking for someone to serve in 2020 though – the final year of the position's term until the next election takes place. Please contact RWCS President Paul Wichert or the RWCS office if you're interested!

THERE'S AN APP FOR THAT

The best way to access the RWCS Convention Schedule while on the go in Red Wing this summer is to download the free “In Any Event...” application to your mobile device. Created by RWCS Member Craig Orcutt, the easy-to-navigate app contains the times and locations of everything going on during Convention. The app is available on Google Play for Android devices and the App Store for Apple devices. Thanks for all your hard work, Craig!

BOY WITH CROCK REUNION TO BE HELD IN CONVENTION DISPLAY ROOM

Are you fortunate enough to have one of the iconic Red Wing stoneware “Boy with Crock” statues in your collection? If so, we're holding a family reunion in the Display Room at Convention this summer (Thursday, July 11 through Saturday, July 13). We know there are at least 14 of these figurines in existence, but believe there are likely more out there. We're hoping all can attend for what will surely be an epic display of incredible handcrafted folk art stoneware.

If you have one of these statues, please contact former RWCS Historian, RWCS Member Steve Brown, at bigpaws1@comcast.net for more details about the display. Check-in and check-out will follow the Display Room schedule unless special arrangements are made with Steve. Even if you can't make it to Convention, he'd like to work with you to bring your Boy with Crock back to Red Wing for this brief appearance. The identities of all Boy with Crock owners will be kept confidential.

WWW.REDWINGCOLLECTORS.ORG

Licensed to beaubrewer1977@gmail.com. Copyright Red Wing Collectors Society



ABOUT THE COVER

Who is “D.A.B” and why do the initials appear on this S/A crock? Thanks to extensive research from longtime RWCS Member Brad Booth and others, we now have strong, albeit circumstantial evidence that stoneware bearing the S/A mark was made by Ohio's Akron Stoneware Co.

Brad makes several convincing points in his article in this issue. While not a slam-dunk, his theory is far more believable than the one that RWCS Hall of Famer Lyndon Viel came up with one night and printed in his 1980 book, *Clay Giants 2*. At the time, Viel learned that a person named August Sandberg was listed as a Minnesota Stoneware Co. potter in the 1894 Red Wing city directory, and simply assumed that's whom the initials stood for. But Viel had only seen two crocks bearing the S/A when his book was published, a far cry from the number that are known to exist today. Turn to pg. 10 and decide for yourself which theory is more likely to be true.



MIDWINTER REVIEW

Despite facing some harsh weather immediately before and after the event, 290 registered members attended the MidWinter GetTogether held at the Isle Casino Hotel in Bettendorf, IA back in February. This was 30 more attendees than we had in Des Moines last year!

The RWCS Iowa Chapter welcomed everyone with its annual social Thursday evening. A big thanks goes out to the chapter for its hospitality. Room sales were also in full swing by Thursday, with some sellers arriving and setting up as early as Tuesday to beat the forecasted snowstorm.



STACY WEGNER
Executive Director

The hotel's north tower lounge area was packed for the Friday night "Member Meet Up" social, where many members noted we had the best food ever served at a MidWinter event. In addition to quality, there was also quantity. With all the leftovers we had, no one should have left hungry. We closed out the night with a live auction benefitting the RWCS Foundation and drawings for several door prizes. Thanks to RWCS members Shelley Lange and Greta Hoerman and RWCS President Paul Wichert for the door prize donations.

Raffle winners were announced at the Saturday morning welcome session, followed by a welcome from our president and a keynote presentation from RWCS Member Danae Quirk Dorr. Shortly thereafter members attended jam-packed educational programs. The Saturday Show & Sale was well attended, as was the Houghton Auction that evening. Due to blizzard-like conditions in Iowa and Minnesota that night and into Sunday, several members opted to stay safe and enjoy an extra night at the hotel.

Media coverage for this MidWinter was awesome. The RWCS had an article in several local newspapers and I appeared on Living Local – an afternoon TV show on WHBF 4, the Quad Cities CBS affiliate (photo at right). A big thanks to RWCS members Linda Rielly, Diane Soltau and Lowell Reed for distributing MidWinter posters and RWCS membership flyers in the area prior to MidWinter.



Photo courtesy of RWCS Educational Manager David "Yoshi" Hoffman

Thanks also go out to:

- RWCS Member Craig Orcutt for his tireless work to develop the MidWinter app for both Apple and Android. This app gave members the opportunity to have all the event information on their phone. He's looking for your feedback for Convention, so please contact him at orcadiolabs@gmail.com.
- The Badger Chapter for donating \$675 to cover the educational seminars.
- The Trails West Chapter for donating \$600 for the new registration computer.

Per the contract we negotiated last year, MidWinter will again be held at the Isle in Bettendorf next year (Feb. 28 – March 1, 2020). Housing information was e-mailed to all members and is available on the RWCS website.

Being the first time we've held MidWinter at the Isle Casino Hotel, we plan to do some things differently next year to improve the experience for everyone. That said, the event went extremely

Licensed to beaubrewer1977@gmail.com. Copyright Red Wing Collectors Society

2019 CONVENTION YOUTH PROGRAMS GOODHUE: MORE THAN CLAY

The RWCS will partner once again with Red Wing Art Reach and the Goodhue County Historical Society (GCHS) to offer wonderful educational opportunities to our younger members at Convention. The GCHS is celebrating its 150th Anniversary in 2019. Since the RWCS has been a part of its history for more than 40 years, we're holding all Young Collectors activities and half of the KidsView activities there.

Young Collectors

9:30 a.m. to 12:30 p.m. Thursday, July 10

Participants ages 13 and up will meet at the GCHS to have a private tour of the museum's 150th Anniversary exhibit and a behind-the-scenes look at the museum itself. Following the tour, participants will assist with set up for KidsView activities. Parents/guardians, please drop off and pick up your child at the GCHS, which is located at 1166 Oak Street.

KidsView

10 a.m. to 3 p.m. Friday, July 11 (Lunch included)

Open to all children attending Convention ages 3 to 13 and limited to 35 participants, KidsView activities will be held at GCHS and Red Wing Art Reach. Registered KidsView attendees will be divided into two groups. Your child's group assignment will come in your Convention registration packet. Check your child in at their group's respective site at 9:45 a.m. Efforts will be made to keep siblings in the same group.

Group A will start at GCHS with the 150th Anniversary Exhibit, the pottery display and the annual KidsView Auction. Auction pieces have been provided by the generous donations of RWCS members all year round.

Group B will start at Red Wing Art Reach, painting their own vintage Red Wing dinnerware piece. They'll also create an air-dry clay project to take home. Both groups will have lunch at the GCHS before Group A takes a bus to Red Wing Art Reach and Group B does the GCHS activities. Lunch will be provided; please inform the RWCS office of any diet restrictions. The RWCS will provide bus transportation between locations, and all participants will be brought back to River Bluff for parent/guardian pickup.

Please call the office and register your KidsView participants! Walk-ins will only be accepted if we have enough space for them. Thank you! 🍪

well. In fact, several RWCS Board members reported being approached by attendees who asked if we can add a third year to our contract and hold it there in 2021, as well. The Board is considering that, but it's also continuing to look for other potential sites. Please contact the office if you'd like to suggest other locations for the club to consider.

A show of hands during the Saturday morning welcome session revealed that the vast majority of attendees were quite pleased with the buffet breakfast. Since breakfast was included in the lodging rate, it created a new venue for everyone to meet and socialize every morning. The hotel's buffet, full-service restaurant and grab & go food stand provided plenty of meal options for attendees. The hotel also plans to complete some facility updates in 2019.

Once again, pets will be welcome at the Isle Casino Hotel for MidWinter 2020. Like this year, you need to directly contact the Isle's Ann Klundt at ann.klundt@islecorp.com or 563-441-7115 to make those arrangements.

Thanks again to everyone who made MidWinter successful! 🍪

POTTERY MUSEUM OF RED WING NEWS



Story & Photos by Char Henn, Pottery Museum of Red Wing Director

What a winter we had! At first it was a warm, almost snowless winter with a chance of a brown Christmas. We got a little snow and then the cold arrived. We came to work with temperatures of -30 degrees Fahrenheit or colder (without the windchill factored in). After the January cold came the February snow. We didn't have much for a snowpack, but got 42 inches of snow in 20 days. Mark Dankers came in several times to rake the roof and take care of ice.

While Mark worked on the outside, Museum Manager Nancy Featherstone, several volunteers and I were busy inside. The meeting room was often rented, tours were booked and we continue to be busy planning for conferences. Claytopia, a national conference hosted NCECA (National Council on Education for the Ceramic Arts) met in Minneapolis at the end of March. We had a bus tour visit your museum and a closing reception, as well. At the end of April, the Minnesota Alliance of Local History Museums (MALHM) will have its annual conference in Red Wing. Nancy and I have served on the host committee and are planning a reception at your Pottery Museum of Red Wing for this conference, as well.

It is hard to believe that we are already three months into the new year, so "Wine-ing for Red Wing" and the RWCS Convention are on our radar. We have begun work on a new exhibit, Red Wing Saloon, which we will officially open during the Convention. Speaking of Convention, mark your calendars for the Pottery Museum's Annual "Wine-ing for Red Wing" Fundraiser on July 10, 2019. We are looking for volunteers to help us with a variety of things that we would like to complete before this special event. If you would like to help, please contact Nancy at 651-327-2220 or potteryuseumofredwing@gmail.com. Convention will be here before you know it, and we are looking forward to seeing all of you! Thank you! 🍷



The "before and after" photos of the ice and snow build-up at the Pottery Museum of Red Wing. Thanks to volunteer Mark Dankers for roof raking to prevent any serious ice-damming from occurring!



ATTENTION DONORS TURNING 70 ½ THIS YEAR

Are you looking for a great way to lighten your tax burden this year? If so, consider making a Qualified Charity Distribution to the RWCS Foundation directly from your IRA. In addition to supporting your Pottery Museum of Red Wing, you'll also help satisfy your required minimum distribution!

For more information, please contact:
Char Henn, Pottery Museum Director
director@potteryuseumredwing.org
651-327-2220



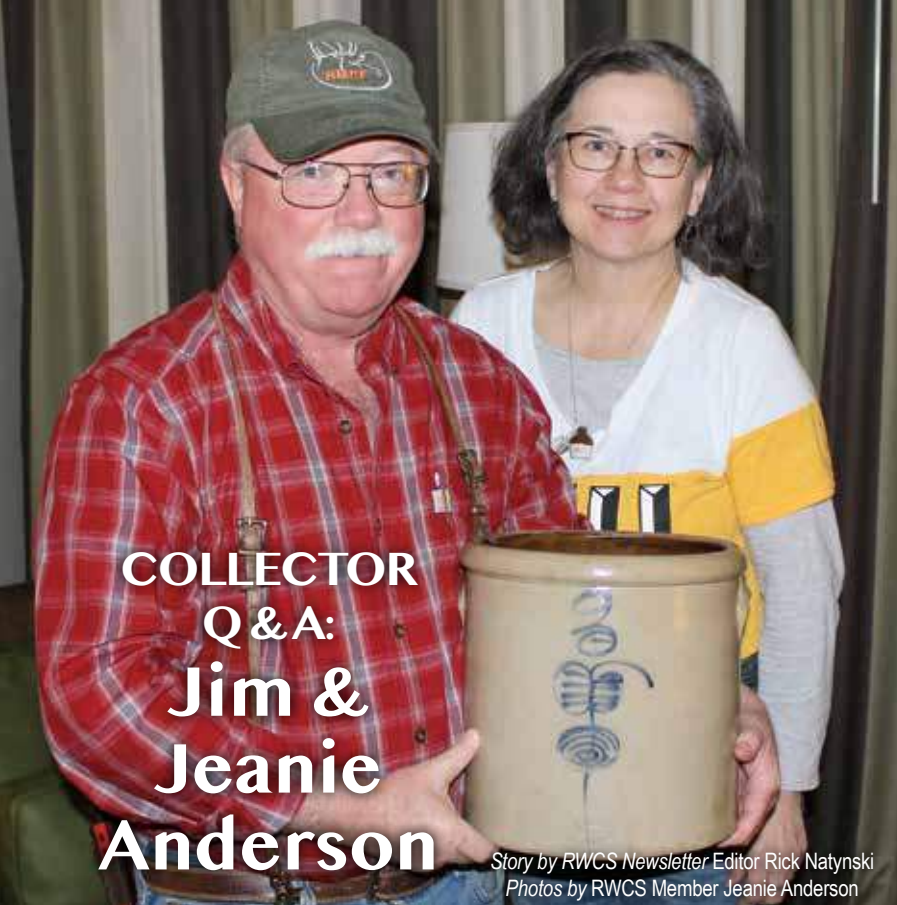
To qualify:

- You must be 70 ½ or older at the time you make your contribution.
- The gift must be made directly from your qualified IRA to the Foundation. Because the funds are transferred directly, they can be excluded from taxable income.
- QCDs are limited to the amount that would otherwise be taxed as ordinary income.
- Your gift must be made by Dec. 31, 2019 in order to count for this calendar year.

Be sure to consult your tax professional for details.

WWW.REDWINGCOLLECTORS.ORG

Licensed to beaubrewer1977@gmail.com. Copyright Red Wing Collectors Society



**COLLECTOR
Q & A:
Jim &
Jeanie
Anderson**

*Story by RWCS Newsletter Editor Rick Natynski
Photos by RWCS Member Jeanie Anderson*



Above: "That damn crock!" The 5 gallon wing crock that started it all for RWCS Members Jim & Jeanie Anderson, along with many other acquisitions.

that included KS, CO, western NE, southeastern WY and the OK/TX panhandles. I put 70,000 miles on my company car a year. The bonus was the mom and pop antique shops along the way. At that time, northern KS and northeastern CO was loaded with Red Wing. One fond memory was from a little shop in Quinter, KS. The owner sold me all three Grayline refrigerator jars with lids, one at a time, as she bought them from an elderly lady in a nursing home.

Q. What was the first piece that started it all for you?

Jim: When we lived in Mankato, MN in 1985, I went on a hunting trip to southeastern Minnesota. If it was more than an overnight trip, I usually took a little gift home to Jeanie. She had been 'oohing and awwing' over Red Wing crocks for some time. There was one displayed in an antique shop, and I picked it up for her. A 5 gallon crock with 6-inch wing started this whole thing, and that damn crock multiplied into hundreds. I brought it home, set it on the porch and called Jeanie out to find her surprise. She loved it.

Q. How long did it take to acquire more pieces after buying that crock? When did you join the RWCS?

Jim: We started going to farm auctions and hitting nearby antique shops. Red Wing was relatively cheap, and I remember picking up crocks at auction for about a dollar a gallon. Even at the time, we realized that it was fun and unique to buy crocks at auction.

Jeanie: A very nice lady, Georgia Eggers, helped us get started, too. Her kitchen was beautifully decorated with lots of Red Wing, and it inspired us. She fed the addiction, gave us lots of advice and sold us a few things out of her collection – like a 3 gallon wing butter churn that we still have. We had been bitten by the Red Wing bug. It was exciting. Every weekend was an adventure. We've been RWCS members since 1986.

Q. What towns did you live in after you started to collect Red Wing, and which were the best hunting grounds for stoneware?

Jim: In June of 1986, I took a job with an agricultural fertilizer company and they began moving us all over the Midwest and West. We moved to Fargo, ND for the first seven months. Fargo was loaded with Red Wing, and I remember buying three water coolers and ice waters in about a week. I think they were \$50 to \$75 each. Keep in mind we were relatively poor at the time, and we had to give up our second car. I walked a mile to work in Fargo winter weather, but a drawback like that didn't keep us from chasing Red Wing. As cheap as it was then, we just didn't have the money. We put stoneware on lay-away, or whatever it took to keep 'em coming in.

Then we moved to western KS, where I covered a sales territory

A huge regret popped up along the way, of which there are many. A shop in Larned, KS had a beautiful front-stamped 3 gallon single-P crock for about \$200, and I walked away from it. It was gone the next time through, and I'm wondering if that Tincher guy who we would meet 30 years later got it. But if we were to talk about regrets, it would take a whole other article.

Q. When did you guys move to Missouri? Have you been to many RWCS Conventions, or have you only been to MidWinter events?

Jim: I'm a corporate drop-out. I worked for a Canadian company and spent a lot of time in Canada, but the only place to advance was in Calgary. I loved Calgary and the winters are relatively mild, but our roots are in the South. We looked at dozens of outdoors-related businesses for about five years, and came home to Missouri in 2003 when we bought Shady Lane Cabins in Eminence, MO (www.shadylanecabins.com). Our parents are nearby, and we're here for their declining years, which has been a blessing.

Jeanie: We attended our only Convention in 1994. We pushed our youngest son around in a stroller; he had just started talking in complete sentences on that trip. I remember sitting with him in the bleachers at the Show & Sale while Jim ran around shopping. I think he got a 1 gallon North Star jug at Larry's Jugs, but don't remember much else from that trip. We're looking forward to going to Red Wing for Convention again, once we get out of the seasonal tourism business. Fortunately our schedule allows us to go to stoneware events in the fall and winter though, like COIPS (Collectors of Illinois Pottery & Stoneware) and the Red Wing MidWinter.

Q. What made you decide to focus on 3 gallon-sized pieces?

Jim: The reason for focusing on 3 gallon pieces is simple – they're Jeanie's. Jeanie points out that 3s are small, and we moved around a lot. Both of us also like that they're small enough to crowd all of the print on the front. When we realized we had accumulated quite a few 3s, and 2 gallon coolers were well out of our price range, we began the hunt for every single 3 gallon piece that's out there. Problem is, a few 3s are crazy expensive, too.

Licensed to beaubrewer1977@gmail.com. Copyright Red Wing Collectors Society





We also blundered off into several other Red Wing lines, not knowing how difficult to find and expensive some pieces can be. For example, we have a complete set of Grayline, minus the 12-inch bowl. They're Jeanie's, too. We chose to complete the set about five years ago when we only needed about a half-dozen hard-to-find pieces. The 12-inch bowl is quite scarce and expensive, and I doubt that we'll ever pick one up. We probably wouldn't have chased the end of the set had we known. We also have tons of odds and ends that we like the looks of, but aren't completing sets around them. We're out of room. Have I already mentioned that? If not, it's an understatement.

Q. What other stoneware do you collect in addition to Red Wing?

Jim: We collect Blue Band Stoneware by Ruckels & Sons from White Hall, IL. We've found a lot since moving back to Missouri. There's more Illinois stoneware here, and it's far less expensive than a similar piece of Red Wing. We need only two pieces to have an example of every item Blue Band made, but the only known examples are deep in collections. We got involved with COIPS after two different members visited Shady Lane Cabins six or seven years ago. They're wonderful people whom we now call friends, and they urged us to join. We're glad we did; belonging to a collector's club and attending its events is the best way to meet people and find stuff.

Q. How did collecting change for you once you joined Facebook?

Jim: I've been active on Facebook since its inception, but along came the various collector pages about five or six years ago. All were game changers, but a very special page popped up about five years ago – one that was full of people who loved collecting Red Wing. The bonus was, they liked to laugh along the way. We fell so hard for these folks that we went to the Fall Antique Festival in Walnut, IA for the first time about five years ago, just to meet them. Friendships grew, and we count this crazy bunch of crockhounds as some of our closest friends. Our everyday friends don't understand collecting at all, but these guys and girls do. Many are even crazier collectors than we are. We look forward to seeing them at stoneware events four times a year, especially MidWinter because we get to spend four of five days with them. It's not only fun to find a few things at events, but it's fun to see what they find, too.

Q. Which of your pieces are your favorites and why?

Jeanie: The 3 gallon wing churn from Georgia Eggers that kindled the flames early on is one of my favorites. I also have a 3 gallon elephant ear churn that's special because my parents gave it to me when I graduated from college. Jim also likes the ones that have a story to tell and friends were involved.

Q. What pieces are on top of your want-list?

Jim: That's easy. I'm looking for a 3 gallon Red Wing Elephant Ear Ice Water cooler and a 4 gallon Elephant Ear Success Filter along with a Blue Band blue top jug and a railroad advertising jug. Jeanie is chasing Red Wing pie plates, and other colors of Red Wing pottery rooster vases.

Q. You guys also collect cast iron, don't you? Did it ever occur to you that there's stuff to collect that isn't so heavy?

Jim: Ha, yes, we have a large collection of Griswold cast iron cookware, which is more advanced than our Red Wing collection. A couple of things happened along the way to cause this. We moved out of Red Wing country for awhile, and a friend turned us on to Griswold a long time ago. That, and having kids will slow down any collecting for awhile. Griswold was plentiful, and until the last 20 years or so, even scarce stuff was rather inexpensive. There's only one piece we need – a spider logo tea kettle. Then it will fall totally off of the radar, and we'll chase nothing but stoneware. You have to stay focused!

Q. Is there anything else you'd like to add?

Jim: I like to visit with young folks at MidWinter, and their excitement and enthusiasm is inspiring. Questions asked are normally along the lines of, "Are we too late? Is the good stuff all tied-up in collections? What should we collect?" First of all, slow down. Take your time and enjoy the show. It isn't only about the crocks or the possibility of investment. It's about the people, the road trips and the sights you see along the way. Take it all in, and don't take a day of it for granted. That's the true beauty of collecting for us.

Many original collections are starting to break loose. Folks are retiring and moving into smaller digs and retirement communities. And, many don't want to leave a collection for their kids to handle if they lack interest. There are some really exciting collections out there with stuff we've never even seen pictures of. Some just might see the light of day in the next decade or two.

Jeanie: Deciding what to collect is all about what appeals to you personally. You have to decide that on your own. Our advice is to buy the best pieces you can afford though. The nicest stoneware and pottery is easy to sell if you ever need the money, or decide to part with one line to start collecting another.

Finally, don't hesitate to ask questions. Most collectors enjoy sharing their knowledge and advice with new collectors.

Jim & Jeanie can be reached at shadyLANECabins@centurytel.net.

WWW.REDWINGCOLLECTORS.ORG
 Licensed to beaubrewer1977@gmail.com. Copyright Red Wing Collectors Society



MidWINTER 2019

Red Wing
Collectors Society Inc.

BETTENDORF, IOWA



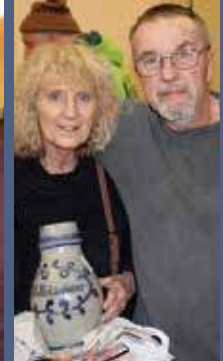




Photo courtesy of RWCS Member Brad Booth

Has the S/A Mystery Finally Been Solved?

Story by RWCS Member Brad Booth, with contributions from David Andrews and RWCS Newsletter Editor Rick Natynski

Ever since revered author and RWCS Hall of Famer Lyndon C. Viel pictured a 4 gallon "S/A" crock in *Clay Giants: The Stoneware of Red Wing, Goodhue County, Minnesota Book 2*, the cobalt S/A decoration has been tied to August Sandberg, a potter who worked for the Minnesota Stoneware Co. in 1894.

Twenty years ago I wrote an article questioning the meaning of the S/A design; it was published in the March 29, 1999 issue of *AntiqueWeek*, and later reprinted in the June 2004 issue of the *RWCS Newsletter*. In the time since then, others and I have developed the theory that pieces with the S/A decoration were not made in Minnesota, but rather in Akron, Ohio.

Now thanks to research recently completed by several individuals, I feel confident that information found online in the Akron-Summit County Public Library's Special Collections* connects one special S/A crock bearing the initials "D.A.B" to an Akron stoneware manufacturer. But before we jump into that, let's take a brief look at how Viel originally connected the S/A design to Red Wing and the many reasons why I believe potter August Sandberg had nothing to do with these pieces.

Introducing the S/A Marking

As far as the cobalt S/A design goes, it was first attributed to Red Wing in print when Viel pictured a 4 gallon S/A example on pg. 65 of *Clay Giants 2* – a crock he had acquired at an auction. Here's an excerpt from the book on how he concluded the "SA" initials stood for August Sandberg:

"Back home sipping tea, and staring at his strange sign, I finally concluded they were initials 'S' and 'A'. I also presumed this large 'S' would be a family or 'last' name. So, even then, at that late hour, I called a friend who had a record from the Red Wing city directories. And I was right. He was there: '1894, potter, Minnesota Stoneware Company, August Sandberg.'"

As one of the founders of the RWCS, Viel was a passionate collector who was deservedly the first inductee into the RWCS Hall of Fame back in 1991. He poured himself into his research and brought a great deal of knowledge to light through his series of *Clay Giants* books.

That being said, his books came with some inaccuracies, and I believe this is one of them. Attributing the S/A design to August Sandberg was a big reach considering he only had a Red Wing city directory to back it up. I also question his explanation of why the "S" was placed before the "A"

In Viel's defense, researching stoneware in the late 1970s and early 1980s wasn't easy. Without the internet, most research was confined to what could be found in local libraries and history centers. Since his books were among the first reference materials of their kind, there simply wasn't much to draw from other than speculations.

In the article I wrote in 1999, I mentioned that I had the pleasure of discussing these pieces with the Rev. Viel at the 1988 RWCS Convention – the last one he attended before he died. He agreed that they were not Red Wing products even though they shared some of the same general characteristics. And other than the city directory he referred to, he didn't have any evidence to indicate that the S/A designation was anything more than pure speculation. This brings us to the reasons why I feel the S/A isn't related to August Sandberg or Red Wing.

Too many were made: Why would a stoneware company let one employee put his initials on so many pieces? Viel was aware of only two pieces bearing the S/A design when he released *Clay Giants 2* in 1980. So at that time, it was plausible to think that they might be pieces that an employee marked with his initials on his lunch hour. By the time *Clay Giants 3* was published in 1987, Viel was aware of "10 or 12" total pieces bearing the S/A mark; still feasible, but less likely that a potter simply made them off to the side.

Today I have more than 20 S/A pieces in my collection alone and I've seen dozens of others over the years. I feel comfortable saying that hundreds probably exist, scattered in collections throughout the country. At that volume, they had to be standard production items, which makes it much more likely that the S/A initials stood for the company that manufactured them.

We are aware of the following types and sizes of S/A containers:

- 2, 3, 4, 5, 6 and 8 gallon crocks
- 3 and 4 gallon jugs
- 3, 4, 5, 6 and 8 gallon churns
- 3 gallon preserve jars

The photo above shows a 3 gallon S/A crock, jug, churn and preserve jar with the dash-dot-dash, or "whiskers" as they're sometimes called, below the numeral. Looking critically at the numeral "3" and the S/A mark, one has to wonder if the same slipper did all of these or if two or more employees did them. I see more similarities than differences, so I believe the same person did them. But that's the exception, not the rule.

*www.akronlibrary.org/locations/main-library/special-collections/genealogy/historic-city-directories

Different S/A variations exist: The picture at right shows three 4 gallon jugs that were likely decorated by three different slippers. The mark in the middle is the one found most frequently on various pieces. The one on the right appears to be more primitive and is highlighted by what resembles a pointed top of a staff – the “/” in “S/A”.



Photo courtesy of RWCS Member Brad Booth

Clearly multiple slippers applied this decoration, so it doesn't make sense that the “SA” initials would represent the name of one potter. Again, it's much more practical that the S/A design was meant to be a company logo or crest.

Some wild and crazy variations have also been found. Back in the mid-1990s at a RWCS Convention education session, collector Dick Marshall from Indiana shared a picture of a crock with a cobalt “D.A.B” under the S/A. Years ago, RWCS Member Jack May sent me a photo of his 3 gallon S/A jug with the flag (immediate right); true folk art. Another collector, Mike Race, sent me a photo of his 3 gallon S/A jug with the target or bee stinger added to the bottom (far right), which now belongs to RWCS Member Lyle Berman. Are there other wild and crazy oddities out there?



Photo courtesy of RWCS Member Jack May

Yes, one delightful discovery came to light in early 2005, when Lyle sent me pictures of his S/A collection and a note that said “The 5 gallon churn and the 5 gallon crock (below right) have the brightest cobalt blue I've ever seen on any of the S/A stoneware.” Later that year I found a 6 gallon crock with that brilliant blue glaze at a local auction. I waited more than two hours and ended up paying twice what I've normally paid for such a piece, but I got it. Obviously, a different recipe was used in making that cobalt glaze, as most of the cobalt on the S/A pieces looks like a thin, flat blackish-blue color.

Photo above and below courtesy of RWCS Member Lyle Berman

The shape and form is atypical of Red Wing stoneware: Most knowledgeable stoneware collectors would probably agree that these pieces were made during the last half of the 19th century. “But where?” has been the question for more than 20 years. Although similar, stoneware with the S/A decoration bears some physical differences from Red Wing pieces. The rim is smaller, the handles are attached differently and I've found that the bottoms of these pieces are often wider at the bottom than they are at the top, so that a 2 gallon crock will stack nicely on top of a 3, the 3 on top of a 4, and so forth all the way down through the 5, 6 and 8 gallon crocks. (But be careful building your stack due to the manufacturing imperfections on some crocks!) All of this considered, the S/A pieces look more like examples of stoneware known to be made by Ohio potteries.



Often found in Ohio: Most of the S/A pieces I own were found at farm and small town auctions and local flea markets near where we live in north central Ohio. Whenever possible, I would ask the sellers where the pieces had been made. No one ever provided even a guess until I found the 8 gallon crock with my favorite S/A variation (pictured at right, with 8 gallon churn) at an Ohio Bottle Club-sponsored show in September 2017. The Indiana dealer I got it from surprised me by replying, “Akron, Ohio” to my usual question. He reported that his brother had done some research and had told him Akron was the origin.

Photo courtesy of RWCS Member Brad Booth

So if the S/A doesn't stand for August Sandberg, what does it stand for? First, I believe there's a lot more going in this design than just an “S” and an “A”. The upper loop of the “S” appears to be a capital “C” with a lowercase “o” inside it – possibly being “Co” the abbreviation for the word “company”.



From there things can get kind of crazy if you have a good imagination. Just like Viel took a stretch to come up with August Sandberg, we can also stretch to spell out the city of “AKRon” if different components of the design were meant to represent parts of more than one letter.

Some collectors see the letter “K” between the “S” and “A”. Below the end of

the capital "C", and to the right of the lower part of the capital "S", we have a square-topped capital letter "A" which could also be a capital "R". Inside the bottom of the "A" we can find a lowercase letter "n".

As stated, this might be a big stretch. But what isn't a stretch is that the clearly visible "A", "S" and "Co" could certainly be an abbreviation for the "Akron Stoneware Co." Of course, the issue I've always had with this is the order in which the "S" and "A" appear. Wouldn't "A/S" make a lot more sense?

Here's where the recent research I mentioned in the beginning of the article starts to come into play. The Akron Stoneware Co. business card ads that appeared in three different Akron city business directories from 1879 to 1883 showed that the company in fact proclaimed itself as manufacturers of "Standard Akron Stoneware." (See below.) This certainly could be why the "S" comes before the "A" in the design: Standard Akron. Perhaps that's why the "S" is the bigger letter...it could be meant to represent the words "Standard" and "Stoneware" alike.

To go even further, the line or "staff" that separates the "S" and "A" and has a rounded top in some variations of the design, and an angular, pointed top on other variations, has long been puzzling. But what if it represents a lowercase letter "f"? Combine it with the lowercase letter "o" nearby and we can use it to make the word "of". How about trying "Standard Akron Stoneware of (the) Akron Stoneware Company" or even "Standard Akron Stoneware of Ohio"? How many other possibilities can you create and share? The biggest question is what did the creator of the design intend for it to mean? Can't you just visualize a company employee doodling and coming up with the S/A design as the firm's logo?



What About the "D.A.B" S/A Crock?

I've provided a lot of circumstantial evidence to support my belief that the S/A design represents Akron Stoneware in some form, but the strongest clue came from the phone call I received on April 2, 2018.

Collector David Andrews introduced himself, explained that he had saved a copy of the 1999 *AntiqueWeek* article and had purchased the "D.A.B" S/A crock from collector Dick Marshall. (Incidentally, Dick acquired the crock from an auction near Richmond, IN in the 1960s or 70s.)



In our conversation, David revealed he was confident that he had identified who the "D.A.B" initials belonged to after finding the business card pictured above and similar versions in the Akron, Ohio business directories online. As shown on the card pictured above from the 1879-1880 directory, a "D.A. Butler" is listed as general agent of the "Akron Stoneware Co. Manufacturers of Standard Akron Stoneware".

David very generously sent the photo of his crock pictured below and copies of several directory pages. We've since gotten together twice and enjoyed several phone conversations to share information.

Many hours have been spent skimming the Akron city business directories online, from the oldest in 1859 through 1933. Numerous trips to the Akron libraries and area historical museums followed, in addition to meeting many wonderful, helpful people. No additional information has been discovered to either reinforce or discredit our conviction that the mystery mark was used by the Akron Stoneware Co.

We have learned so far that David A. Butler was born in England in 1840 or 1841 and immigrated with his wife to Akron, like other English potters. He is listed as a potter in the 1870 U.S. census and he became a naturalized citizen on Feb. 19, 1872.

First noted in the 1873-74 Akron business directory as a clerk for J.M. Wills grocery, Butler is next listed as a book agent in the 1875-76 edition. In the 1877-78 directory he is one of only three men noted on the business card of "J.C. Richardson & Co., Manufacturers and Wholesale Dealers in All Kinds of Ohio Stoneware". In the next edition pictured at left (1879-80), Butler is listed as the general agent for the newly organized Akron Stoneware Co., of which J.C. Richardson became president in 1881.

In the 1880 U.S. census records, Butler is listed as "Gen. Agt. Stone Ware Co." He is 39 years old, his wife, Mary Ann is 40, and they have a 2-year-old daughter. He remains in that position through the next four directories with "the year ending June, 1885" being his last listing. That directory also has the business card of the newly formed Akron Stoneware Agency, a group of 10 Akron stoneware companies organized to be their sales agent. This organization would have been similar to the Union Stoneware Company formed by the three Red Wing stoneware companies in September of 1894.

David Butler is not listed in the 1885-86 edition of the business directory, but his widow is. Their daughter would have been around seven years old at this point. No obituary or other information has been discovered, but would be welcomed.

David Andrews, I and others believe that the "D.A.B" crock and its recent ties to the information available from the historic Akron business directories has provided strong circumstantial evidence to support that our S/A pieces were indeed produced by the Akron Stoneware Co.

Could this crock have been a presentation piece for Butler's great sales work, or could he have used it as his salesman's sample? Or, is it possible that this piece was made to memorialize his death in 1885? So far, no brochures, catalogues, pictures or other evidence have been discovered, so we end this article as we ended the first article in 1999, with questions.

What other shapes, sizes or variations of S/A stoneware are out there waiting to be discovered and shared? What is the story of David Butler's passing? Was the S/A mark ever described or registered as a formal logo, and could old documents be sitting in a box or folder somewhere, just waiting to be found?

If you have any information or theories not covered here, or know of S/A pieces not listed in this article, please contact me. And since I probably won't be around in 20 years, the *RWCS Newsletter* editor would be in the best position to collect additional information related to stoneware with the mysterious S/A mark. Thank you!

Brad Booth Home: 419-892-2024
1481 E. Hanley Road Mobile: 419-512-3865
Mansfield, Ohio 44903 e-mail: evboo1481@gmail.com

2018 RWCS FINANCIAL REVIEW

As I think back to this past year, I wish to draw attention to RWCS membership value. We each know that all the parts of this hobby contribute to our interest and fun. All the parts including the Foundation and Museum, the buyers, casual sellers, dealers, auction houses, local RWCS Chapters, multiple Facebook groups and the Society, adds up to a thriving group of collectors with healthy collection values!

The value proposition of the Red Wing Collectors Society portion of this equation includes two fun events each year, high quality education, support to members' questions, great Commemoratives to look forward to and entry to a members-only auction at Convention and the Show & Sale. All of this for a membership fee that is small compared to our collecting habits. The value is huge, pass it on!

I'm pleased to present the RWCS Financial Report Summary as of December 31, 2018. Please take a moment to review the numbers along with my comments. I would love to entertain questions. You can e-mail me at treasurer@redwingcollectors.org or message me on Facebook. This is your society and each of us – you and I, have a responsibility to keep the RWCS healthy for generations to come. 🍷 -Dan Beck, RWCS Treasurer

FINANCIAL POSITION	2016	2017	2018
CASH IN BANK	\$492,325	\$478,598	\$465,265
OTHER ASSETS	6,833	9,015	11,531
LESS LIABILITIES	(56,628)	(54,724)	(52,968)
NET ASSETS	\$442,530	\$432,889	\$423,828

- Net assets represent the funds the RWCS has available at the end of each year. Net assets increase or decrease by the amount of profit or loss each year.
- RWCS remains healthy with net assets of \$425,846.
- Our cash balances are kept with local Red Wing banks in CD, money market and checking accounts.

RED WING COLLECTORS SOCIETY 2016-2018 RESULTS AND 2019 BUDGET

REVENUES	2016 ACTUAL	2017 ACTUAL	2018 ACTUAL	2019 BUDGET
GENERAL & ADMIN	\$96,310	\$92,427	\$87,531	\$75,180
CONVENTION	40,953	49,233	37,611	42,395
COMMEMORATIVE	124,392	121,117	101,879	92,750
AUCTION	60,409	73,635	95,903	76,800
MIDWINTER	4,128	9,681	10,220	11,420
YOUTH	122	2,791	446	200
TOTAL REVENUES	\$326,314	\$348,884	\$333,590	\$298,745
EXPENDITURES	2016 ACTUAL	2017 ACTUAL	2018 ACTUAL	2019 BUDGET
GENERAL & ADMIN	\$176,407	\$181,688	\$173,722	\$175,929
CONVENTION	35,237	34,020	22,761	26,161
COMMEMORATIVE	53,466	68,920	50,335	48,625
AUCTION	54,059	64,564	85,695	68,025
MIDWINTER	9,935	8,263	9,094	9,920
YOUTH	2,881	1,110	1,044	1,555
TOTAL EXPENDITURES	\$331,985	\$358,565	\$342,651	\$330,215
INCOME (LOSS)	2016 ACTUAL	2017 ACTUAL	2018 ACTUAL	2019 BUDGET
GENERAL & ADMIN	(\$80,097)	(\$89,261)	(\$86,190)	(\$100,749)
CONVENTION	5,716	15,213	14,850	16,234
COMMEMORATIVE	70,926	52,197	51,544	44,125
AUCTION	6,350	9,071	10,208	8,775
MIDWINTER	(5,807)	1,418	1,126	1,500
YOUTH	(2,759)	1,681	(598)	(1,355)
TOTAL INCOME (LOSS)	(\$5,671)	(\$9,681)	(\$9,061)	(31,470)



Red Wing
#1633 vase in
experimental
glaze.

- We have been operating at losses of approximately \$9,000 per year.
- The entire organization continues to work to cut unnecessary costs while investing in things that are more important to our members.
- The 2019 budgeted loss of \$31,000 is similar to prior year's budgets. We budget conservatively and work to come out better each year. Last year we budgeted for a loss of \$25,164, but ended up with a loss of just over \$9,000.
- General and Admin revenue was down from 2017 following continuing trends of membership declines.
- Commemoratives and Convention were down also following the membership trends.
- Take note that the members Convention Auction revenue was up this year, as the quality of pieces improved as a whole.

WWW.REDWINGCOLLECTORS.ORG

Licensed to Deborah 1977@gmail.com. Copyright Red Wing Collectors Society

AD RATES

Classified ads are 20¢ per word for members and 30¢ per word for non-members; \$4 minimum charge and are accepted on a first-come, first-served basis. In addition to appearing in the newsletter, classifieds and display ads are posted on the RWCS website.

DISPLAY ADS

Display Ad Size	Ad Rate
Full page	\$500
1/2 page (horizontal or vertical)	275
1/4 page	150
1/8 page	85

Display ads purchased by non-members cost an additional 15%.

DISPLAY AD DIMENSIONS

Full Page	8 x 10.5
1/2 page (horizontal or vertical)	8 x 5.25
1/4 page	4 x 5.25
1/8 page	4 x 2.125

Ads must be supplied electronically as an EPS or PDF file. There is an additional 10 percent fee for design and makeup if needed (\$10 minimum).

DEADLINES

Issue	Ads	Editorial	Mail Date
February	Jan. 10	Jan. 1	Feb. 15
April	March 10	March 1	April 15
June - Contact Stacy Wegner at 651-388-4004.			
August	July 25	July 15	Aug. 31
October	Sept. 10	Sept. 1	Oct. 15
December	Nov. 10	Nov. 1	Dec. 15

EDITOR ADDRESS

E-mail your ad to newsletter@redwingcollectors.org. Make your check payable to "RWCS" and mail to: Rick Natynski, P.O. Box 198, Pewaukee, WI 53072. If you don't have e-mail, you can mail your ad with your check or call Rick at 414-416-WING (9464).

CLASSIFIEDS

RED WING FOR SALE

FOR SALE: Commemorative Set 1977-2017, excellent: \$6950 or B.O. (Layaway possible). 1st & 2nd Viel Clay Giants Books, Fair: \$50. 1981 Commemorative: \$232 (Free shipping). Contact 320-290-5870.

FOR SALE: RWCS Commemoratives. 1986 and 1990-2012, except 2010. Call or text Marilyn at 907-244-1966.

FOR SALE: RWCS COMMEMORATIVES - 1977 through 2018 includes all books, accessory pieces and two specials \$5500. Also 1995 through 2015 sold in lots of three. Will deliver to convention. Contact catsquared@charter.net, 989-832-2527 or 989-859-2333 (text).

FOR SALE: One & Two qt. shield fruit jars, #912 bud vase & 14 figurines pictured in Ray Reiss book: B-1414, B-1415, B-1416-, B-1417, #1308, B-1389, #420, #1308, #1309, B-1389, #1310, #727, #46, #47. Call Orville at 509-780-1860 (WA State). (4/19)

FOR SALE: Red Wing Lotus pattern dinnerware (Bronze). 350+ pieces. Prefer pickup, possible delivery to Convention. Located 20 minutes north of Minneapolis. Call 763-295-4587. (4/19)

RED WING WANTED

WANTED: Still, and always looking for jugs and crocks with Montana advertising. Working hard to improve my collection. Contact Aaron at adbliss@3riversdbs.net or 406-788-7851. (4/19)

WANTED: Will pay strong price for RW bean pot with Westby, Wis. advertising. Contact Rich at 608-617-7424 or repatlargeeast@redwingcollectors.org.

WANTED: Bob White 4 $\frac{3}{4}$ " true coffee mug. Contact Rob at rkuklas@hotmail.com or 920-222-1363.

WANTED: 2 and 3 gallon Elephant Ear Ice Water coolers and any other 2 gallon Ice Water. Call or text 907-252-6799. (12/19)

WANTED: Reuter Brothers, Carlos, Minnesota, Bean Pot. This South Carolina girl is looking for a piece of family history from the old family store. Please contact me at annemarie@sc.rr.com.

WANTED: Ash receivers, rooster vases and any other animals. Call or text 907-947-1765. (12/19)

WANTED: Montana born & raised - looking for Montana advertising jugs & crocks. Call or text 406-945-0434. (12/19)

WANTED: Ceramic Drinking Fountain Attachment for 5 gallon Red Wing water cooler. Our 2 $\frac{1}{2}$ year-old granddaughter accidentally broke the one we had, so we're looking to replace it. Please contact Cathi at 715-923-6695 or CathiM@cityofpeshtigo.us.

WANTED: Mini & salesman sample flower pots in any colors. Contact cobe142@cox.net or 402-598-1315.

WANTED: Seeking quality jugs & crocks with North Dakota advertising. Butter crocks & chums, too. The more rare the better! Will pay top \$\$ for the right pieces. Contact beehive@polarcomm.com or 701-270-0242.

WANTED: Looking for a Willow Wind pattern Spoon Rest - the last one I need to complete my collection of RW spoon rests! Call Margaret at 651-388-9729.

WANTED: Red Wing advertising bean pots from Shamokin, PA & Frazer, MT. Also mint #687 Blue Chromoline vase. Contact Rick at 414-416-WING or newsletter@redwingcollectors.org.

AUCTION

10 a.m. Saturday, May 25, 2019 at Kenwood Hall in Salina, KS.

Red Wing: 130 quality items! Salt glaze & transition crocks to 20 gal; 4 gal EE Ice Water w/oval; 6 gal Birchleaf Ice Water w/oval; 3 gal water cooler w/ blue band lid & "3" inside bottom; 4 gal Birchleaf Ice Water; Two 6 gal Ice Water w/6" wing, black w/large oval; 14 zinc & salt glaze churns w/lids; 12 extra churn lids; button lids; 12 mini jugs; Koverwates; rare salt glaze German spittoon w/Greek key design; 1, 3 & 5 gal Waconda Springs jugs; Birchleaf & wing beehives; adv. jugs & feeders; pantry jars; RW reference books inc. *Clay Giants 3*; RW bowls to 12"; three 1 gal brown bailed jugs: RW, Minn & North Star w/fancy bottom mark! **Antiques:** Porcelain signs & thermometers; adv. wood boxes; lamps; wood bowls & sugar buckets; 75+ old & rare spice tins; 5 cast iron windmill weights; graniteware; quilts; oval bubble glass w/patriotic picture; peanut machine; Coke trays; porcelain barber pole.

Visit www.ThummelAuction.com for photos. Contact Charles at 316-655-7061 for more info.



FABULOUS STONWARE AUCTION 9 a.m. Saturday, June 1 • Backes Auction Center 6605 Dubuque Rd. Raymond, IA 50667

Live & Online Bidding. Local couple's amazing collection! Over 400 pieces of Red Wing, Western and Blue & White stoneware; various sized salt glazed & zinc crocks; salt glazed churns; assortment of packing jars, butter crock, McDonald's crocks, Grayline reamer, cookie jar with lid and more! Sponge umbrella stand, Cherry band pitchers, Cattail, bean pots, jugs, feeder, Koverweights: 20,15,5,4,2; Hamm's bank, Sentman Grocery Wellsburg, Iowa pitcher, Blue & White pcs, Various Blue Fern, newer salt glaze; Complete set of Red Wing Commemoratives: books, pictures, newsletters and more! 10% live & 16% online buyers fee. In Conjunction with Kastli Auctioneering. **Backes Auctioneers • Raymond, Iowa • 800-876-8070 • www.backes-auction.com**



Licensed to beaubrewer1977@gmail.com. Copyright Red Wing Collectors Society



**MIDWINTER
2019**
Red Wing
Collectors Society Inc.
BETTENDORF, IOWA

PREGNANCY ANNOUNCED RED WING STYLE

What's a creative way to inform your parents that they're going to be grandparents? If they're longtime Red Wing collectors, why not let the stoneware do the talking?

RWCS Member Jeff Floyd shares that after a family dinner last fall, daughter Ashley O'Brien announced that she and husband Mike were out antiquing and found a bottom-signed salt glaze jug they thought he'd like. She handed it to him handle-side first, and when he turned it around expecting to see advertising, he was shocked to see "Future Red Wing Collector – Expected May 2019" on the front of the jug. What a great way to announce a pregnancy! Congrats to the entire Floyd Family on the exciting news. Baby O'Brien is due at the end of May.



Below: The Floyd Family poses for a photo at MidWinter. From left to right: Mike & Ashley O'Brien, soon-to-be Aunt Aarika Floyd and soon-to-be grandparents Jeff & Paulette Floyd.



Licensed to beabrewer1977@gmail.com.

Copyright Red Wing Collectors Society

MIDWINTER JAW DROPPERS



At left: One of the most impressive pieces at MidWinter was this Red Wing double pig.

A previously unknown example, it's one of very few double pigs in existence. Although missing the piglets, having both pigs on the base with a trough makes it an incredible piece of Red Wing folk art! The owner recently put it on consignment at Larry's Jugs.

Below: As shown on this page, some exceptional stoneware animals surfaced at MidWinter. RWCS Member Bill Prock took this salt glaze ram doorstop in on trade. It cleaned up nicely when he got home.



At left: This might be the best example of a blue-winged Red Wing crock in existence. The owner didn't price it, but it was available for trade.



At right: How many salt glaze Cow & Calf figurines have you seen? Bill Prock was the lucky person to take this one home, too!



Below: RWCS Member Kevin Williams restored this 20 gal rbcage and returned it to its owner at MidWinter. Note the "before" photo next to the crock. Well done, Kevin!

At right: Larry's Jugs had this seldom seen "Old Frontenac Point" bottom-signed "Red Wing USA" candlestick priced at \$250.



Below: Many different potteries made sitting spaniel doorstops, but this one is attributed to Red Wing. Similar examples are pictured on pgs. 13 and 81 of Red Wing Potters & Their Wares (3rd edition).

