



VOL. 33 NO. 6

NEWSLETTER

DECEMBER 2008

A BLUE CRACKLE CHRISTMAS

Page 3

YOUNG COLLECTOR
PROFILE: SAM EDGE

Page 5

TALES FROM THE
DUMP: "NEW" SALT
GLAZE LIDS

Pages 12 & 13

RWCS CONTACTS

RWCS BUSINESS OFFICE

PO Box 50 • 2000 Old West Main St. • Suite 300
Pottery Place Mall • Red Wing, MN 55066-0050
651-388-4004 or 800-977-7927 • Fax: 651-388-4042
EXECUTIVE DIRECTOR: STACY WEGNER

EXECUTIVEDIRECTOR@REDWINGCOLLECTORS.ORG
ADMINISTRATIVE ASSISTANT: KATIE HARDYMAN
MEMBERSHIP@REDWINGCOLLECTORS.ORG
Web site: WWW.REDWINGCOLLECTORS.ORG

BOARD OF DIRECTORS

PRESIDENT: SUE JONES TAGLIAPIETRA
2219 Lakeland Ave. • Madison, WI 53704-5636
608-241-3072 • PRESIDENT@REDWINGCOLLECTORS.ORG

VICE PRESIDENT: JOLENE McKOON
3124 4th St., Unit 8 • Moline, IL 61265
309-797-3894 • VICEPRESIDENT@REDWINGCOLLECTORS.ORG

SECRETARY: PAULETTE FLOYD
208 E. Somonauk • Yorkville, IL 60560
630-553-9234 • SECRETARY@REDWINGCOLLECTORS.ORG

TREASURER: MARK COLLINS
7312 Lake St. • Omaha, NE 68134
605-351-1700 • TREASURER@REDWINGCOLLECTORS.ORG

HISTORIAN: STEVE BROWN
1816 Sakenda Rd. • Buffalo, MN 55313
763-684-2400 • HISTORIAN@REDWINGCOLLECTORS.ORG

REPRESENTATIVE AT LARGE: RUSSA ROBINSON
1970 Bowman Rd. • Stockton, CA 95206
209-463-5179 • REPATLARGEWEST@REDWINGCOLLECTORS.ORG

REPRESENTATIVE AT LARGE: JERRY ERDMANN
W15416 Fair-Morr Rd. • Tigerton, WI 54486
715-535-2094 • REPATLARGEEAST@REDWINGCOLLECTORS.ORG

AUCTION MANAGER: TODD AVERY
29361 Flower Valley Rd. • Red Wing, MN 55066
651-592-3008 • AUCTION@REDWINGCOLLECTORS.ORG

COMMEMORATIVE MANAGER: BOB MORAWSKI
2130 S. Ridgeway Dr. • New Berlin, WI 53146
262-853-8269 • COMMEMORATIVE@REDWINGCOLLECTORS.ORG

EDUCATION MANAGER: GLENN BEALL
215 W. 7th St. • Logan, IA 51546-1221
712-644-2256 • EDUCATION@REDWINGCOLLECTORS.ORG

JULY CONVENTION SUPPORT PERSONNEL:
Pre-registration – JIM & JOYCE SUTHERLAND
AND JIM & KAREN KEYS

Show & Sale – CINDY & PETE MAY
423-639-2477 • SHOWANDSALE@REDWINGCOLLECTORS.ORG

Display Room – LAURA BEALL
605-464-5941 • DISPLAY@REDWINGCOLLECTORS.ORG

IN THIS ISSUE.....



PAGE 3	NEWS BRIEFS, ABOUT THE COVER
PAGE 4	2009 MIDWINTER PREVIEW
PAGE 5	YOUNG COLLECTOR PROFILE: SAM EDGE
PAGE 6	CLUB NEWS, RECREATING THE MONMOUTH PIG
PAGE 7	A JUG'S CONNECTION TO DENVER'S SHADY PAST
PAGE 8	EAST COAST RED WING ART POTTERY COLLECTOR
PAGE 10	PATENT APPLIED FOR
PAGE 11	AN UNDOCUMENTED LITTLE TEAPOT
PAGE 12	TALES FROM THE DUMP: "NEW" SALT GLAZE LIDS
PAGE 14	CLASSIFIEDS
PAGE 15	RECENT FINDS & DEALS
PAGE 16	RED WING EPHEMERA

MEMBERSHIP

A primary membership in the Red Wing Collectors Society is \$25 annually and an associate membership is \$10.

There must be at least one primary member per household in order to have associate membership. Members can pay for more than one year when renewing their membership. Contact the RWCS Business Office for additional details.

NEWSLETTER EDITOR

RWCS MEMBER RICK NATYNSKI

PO Box 441

ELM GROVE, WI 53122-9998

NEWSLETTER@REDWINGCOLLECTORS.ORG • 414-416-WING (9464)

The Red Wing Collectors Society, Inc. Newsletter is published bi-monthly by the Red Wing Collectors Society, Inc. Suite 300 • 2000 West Main Street Red Wing, MN 55066.

Phone: 651-388-4004 Fax: 651-388-4042

WWW.REDWINGCOLLECTORS.ORG

Postmaster: Send address change to: Red Wing Collectors Society, Inc. Newsletter
PO Box 50 • Red Wing, MN 55066. USPS 015-791; ISSN 1096-1259.

Copyright © 2008 by the Red Wing Collectors Society, Inc. All rights reserved.
The Red Wing Collectors Society, Inc. does not guarantee the accuracy of articles submitted by individual members.

NEWS BRIEFS

MIDWINTER TO BE HELD IN DES MOINES THROUGH AT LEAST 2011

The RWCS Board of Directors held its Nov. 8 meeting at the Holiday Inn in downtown Dubuque and toured the facility to see if it would serve as a good site for a future MidWinter GetTogether, but after much discussion, the Board opted to keep the event at the Holiday Inn on Merle Hay Road in Des Moines through at least 2011.

The Board has considered different locations in recent years because the MidWinter GetTogether was originally designed to be a moving event so more collectors from different regions across the Midwest would have a better opportunity to attend. Most Board members generally agree that rotating the location of the event would be in the best interest of the Society as a whole, mainly because it will help attract new members and keep interest high throughout the Midwest. However, it has been a challenge to find a new venue that has adequate space and good accessibility, while also offering low lodging rates for members. For example, the hotel in Dubuque has only a few small room suites, the Board felt it was difficult to find and parking was a concern. In addition, Board members have recognized that Des Moines has become a favorite spot for many collectors and attendance there has been strong over the past few years.

BOARD RENEWS NEWSLETTER CONTRACT WITH RICK NATYNSKI THROUGH 2013

The RWCS Board of Directors voted unanimously to extend the newsletter contract with Rick Natynski for four years once his current contract expires at the end of 2009. Rick has been editor since 2006 and has been a collector and RWCS member since 2001.

“We’ve heard nothing but positive feedback from the membership about the quality of the newsletter since Rick became the editor, and we’re very pleased with the depth of the content he’s generated,” says Jolene McKoon, RWCS vice president. “The interesting stories and colorful layouts have made it a treat to read, and I doubt we could find someone who could do a better job, especially for the price.”

The Board has only renewed the newsletter contract for two-year terms in the past, but due in part to finding more competitive printing rates, Rick offered an annual discount of 7 percent if the Board would commit to a 4-year agreement, saving the Society more than \$22,000 over the life of the contract.

NEW MEMBERSHIP BROCHURES AVAILABLE



RWCS needs your help to find new members. The best way to find members is by talking about our organization and getting people excited. Your testimonial and your passion gives people a reason to join the Society. The same grassroots effort launched the organization more than 30 years ago. New brochures were created last year and they went so quickly that the RWCS Business Office has ordered 7,000 more copies for 2009. If you’re coming to MidWinter, please pick some up for you and your fellow members to distribute in your travels in 2009. If you prefer something smaller, request our business information card. These are handy for the purse, pocket or glove box. Plus, they’re blank on the back so you can jot down your contact information. We also have back issues of the *RWCS Newsletter* and *Convention Supplements*. Help us grow the Society in 2009 and fill the RWCS “Little Brown Jug of Membership.” Remember, Nebraska got first bragging rights to the trophy at Convention this year – now it’s time for you to get out there and help your chapter lay its claim by recruiting the most members before July 1.

CLASSIFIED ADS TO GO LIVE ON RWCS WEBSITE IN FEBRUARY

For the first time in its existence, the RWCS website will contain the same classified and display ads that appear every two months in the *RWCS Newsletter*. As a result, classified rates will increase from 15 cents a word with a \$3 minimum charge to 20 cents a word with a minimum charge of \$4 starting in February. Display ads will also increase by \$25, regardless of the size purchased. Newsletter ad rates haven’t increased in several years and the RWCS Business Office felt this was an opportune time to do so since advertisers will get increased value with the ads being posted online. The Society receives all revenue from newsletter and website advertising. To place an ad, contact Editor Rick Natynski.



ABOUT THE COVER

A great thing about collecting Red Wing is that it can always be incorporated into some type of holiday theme, no matter what you collect. Red Wing collector Bill Furdon knows this all too well, as he has nearly 15 years of collecting under his belt and has put together almost that many Red Wing Christmas displays to boot.

This year he pulled out one of his favorites – his Blue Crackle art pottery – and set up a modern Christmas décor in the corner of his Provincetown, Mass. living room. As you’ll see later in this issue, Bill loves his Red Wing. Turn to pages 8 and 9 to read about what fuels his passion for building a massive collection of art pottery and dinnerware.

Another year is nearly behind us, so it’s a great time to reflect and be thankful for all the good in our lives. Whether it’s friends and family, a good job or long-awaited retirement, good health, or that sweet salt glaze water cooler you scored this year, it’s good to be appreciative of what you have.

On behalf of the Red Wing Collectors Society, Happy Holidays, Merry Christmas and Happy New Year. We’ll see you in 2009!



STACY WEGNER

Executive Director

It's not too late to come to the MidWinter GetTogether and "Rock around the Crock." Several members have contacted the office to let us know they are getting into the swing of things with the wardrobe for the Friday night social. Don't forget, it's not too late to sign up for a seller's table to raise some dough for room sale hunting. Our new education manager, Glenn Beall, has some great educational sessions lined up. For more on those, check out page 6.

We're also still in need of a few cool cats to volunteer for Registration and KidsView. Here's your chance to see every member who comes to MidWinter and help the kids fire up their passion for Red Wing. Contact the business office if you're interested in helping us at the Crock Hop!

I'm happy to put your minds at ease and let you know that the Board voted to keep MidWinter in Des Moines until 2011. So if you're missing out in 2009, start making plans to mosey on down in 2010 because we'll be there. Dates will be announced soon.

In other news, the Society now has another online presence – we have a Wikipedia page for both RWCS and Red Wing Pottery. Laura Beall has been working hard on this, but is in need of help. If anyone is interested in working on content for this online encyclopedia, please let me know. The hard work is citing material from independent sources to get the RWCS and Red Wing Pottery story told.

In addition to this, we now have connections with www.JUSTARTPOTTERY.COM, www.TIAS.COM, www.COLLECTIBLEDETECTIVE.COM and we're looking at several other social marketing sites to welcome new members. Don't forget, the best way to recruit new members and grow the Society is for you to talk to people.

KidsView MidWinter Preview

This year, KidsView participants at MidWinter will be rocking around the crock just like the adults! They will learn about 1950s Red Wing Pottery production pieces through "Make your Own Vase." The second session will continue the 50s production education session followed by the opportunity to have fun with paint. In addition to these activities, there will be other painting projects, clay working and beads. We've also extended KidsView activities into the Show & Sale and auction over the past few years and plan on doing so again in 2009. This gives the participants time to finish projects and create new ones. Luke and I have supervised the table together in the past, but we're looking for additional volunteers to help out this year.

–Stacy Wegner, RWCS Executive Director



MidWinter GetTogether

Back to the 50s

Red Wing Collectors Society Inc.
FOUNDED 1973

HOLIDAY INN & SUITES DES MOINES, IA
 FEBRUARY 6-8, 2009

Friday, Feb. 6th		
BOARD MEETING	8:00 AM TO 3:00 PM	IOWA BOARD ROOM
REGISTRATION	1:00 - 8:00 PM	HOTEL LOBBY
ROOM SALES	AFTERNOON/EVENING	
Crock Hop 7:00 - 9:00 PM HEARTLAND BALLROOM		
Saturday, Feb. 7th		
REGISTRATION	7:00 - 10:00 AM	HOTEL LOBBY
CONTINENTAL BREAKFAST	7:00 - 8:15 AM	HEARTLAND BALLROOM
WELCOME / GENERAL SESSION	8:15 - 9:30 AM	HEARTLAND BALLROOM
KEYNOTE SPEAKER: BOB KUBAS, INSURING YOUR COLLECTION		
EDUCATION SEMINARS SESSION 1 9:40— 10:30 AM SESSION 2 10:40— 11:30 AM SESSIONS WILL BE THE SAME FOR EACH TIME SLOT		
SHOW & SALE (OPEN TO PUBLIC— FREE)	1:00— 4:00 PM	HEARTLAND BALLROOM
HOUGHTON'S AUCTION	6:00 PM	HEARTLAND BALLROOM
Sunday, Feb. 8th		
CONTINENTAL BREAKFAST	7:00 - 9:00 AM	ROOM 513
HOSTED BY IOWA CHAPTER		







SAM I AM

Story by Rick Natynski

At only age 12, Sam Edge became one of the youngest people to ever win the People's Choice Award for his Red Wing Pottery Strike memorabilia display at Convention this July, but it wasn't the first time his project took home a prize.

Sam, who lives with his folks in Stewartville, Minn., created and entered the display in a competition last year for his school's History Days program. Although he was only 11 at the time, he had already been collecting Red Wing for four years. So when he was told that the project had to follow the "Conflict & Compromise" theme, he knew right away that he wanted to do it on the labor strike at the Potteries. Every 6th grader had to submit an entry, so he was expecting to face some stiff competition.

"I did a lot of research on the strike," Sam says. "It was really interesting. Most of the information I got was from old newspaper articles, the Potteries strike folder at the Goodhue County Historical Society and *Death of a Business* – the book written about the strike."

Clearly the hard work paid off, because he was awarded first place for his school and his project went on to compete at the regional level. He won that too, and his project went forth to compete at Minnesota's state level. Although he didn't win the top prize there, he did receive an Honorable Mention.

"It was really cool to make it that far and I was really proud," Sam says. "I was kinda sad though too, because the competition was over after that."

Luckily there was still the Convention, and winning the People's Choice Award resulted in being awarded a 2008 Special Commemorative. As icing on the cake, his name was drawn during the Annual Business Meeting at Convention, so he won a second Special Commemorative.

"That was pretty lucky," he admits.

So what sparked Sam's Red Wing fascination? As a youngster, he liked to collect things and enjoyed

diving into different subjects. He was all about comic books early on, but soon he began to learn about cars and then, of all things, real estate.

"Sam definitely has a unique personality and a unique thought process," says his mother, Sue Edge, who collects Red Wing beater jars and the Driftwood pattern and has been an RWCS member since 1992. "Eventually he began paying attention to all of the antiques collected by my parents and got interested in Red Wing."

Sam's grandparents are Dale and Karen Morris, who have been RWCS members since the early 1980s. But Sam actually got his first piece of Red Wing from his other grandma – Grandma Edge. It was a 2 gallon small wing crock she gave him when he helped clean out her basement.

Sam attended his first Convention in 2005 and has made every one since. Although he hasn't been able to attend the KidsView educational programming yet, he hopes to next year because none of his friends from school collect. He finds most of his Red Wing at garage sales, antique shops and the occasional auction, although he doesn't do much with eBay because he likes to inspect a piece in person before buying it. Sam puts much of his \$5 weekly allowance towards Red Wing purchases and also earns money by pet setting around the neighborhood.

His favorite piece, a 4 gallon ribcage churn and lid, is also his most valuable. His aunt didn't know if it was Red Wing or not, but she got it for him at an auction in Iowa for a Christmas and birthday present.

A few of Sam's other top pieces include a Gopher on a Football, a factory sample art pottery piece with glaze numbers on the bottom and a mint bean pot with gas station advertising from North Dakota that he picked up for only \$1 at a garage sale.

Sam's already amassed about 110 pieces and he displays much of his collection in his bedroom, with other pieces sprinkled around the basement and kitchen. But when his collection exceeded the size of his mom's, his dad told him he had to find another place to keep some of his stuff. Fortunately Grandma Edge came through. She lives about a mile up the road, so she lets Sam display part of his collection in an empty bedroom, which just happens to be the room his dad had when he was a kid.

Like most collectors, Sam enjoys the thrill of the hunt and opportunity to meet new people and learn from them. The one particular piece he would love to find right now is a beater jar with advertising from Haack's Store in his hometown of Stewartville, Minn., although he concedes that it will likely be out of his price range if he finds it. But, he has hope.

"It's kinda exciting not knowing what's around the corner at the next garage sale or auction," he says. "You never know what you might find when it comes to Red Wing." ■



Below left: Sam sits with his favorite piece - a 4 gallon ribcage churn. **Above:** Sam poses with his award-winning history project. **Below:** A few pieces from Sam's collection.





GLENN BEALL

*Education
Manager*

The 2009 MidWinter Education Program will keep your passion for Red Wing spinning until July. The event will open with making sure that you start the year off right in knowing that your collection is secure. RWCS member Bob Kubes from the Musty Barnhart Agency will present the keynote speech on insuring your collection. This is your chance to corner an expert and ask a fellow collector the important questions you have about insuring your collection.

In addition to the keynote presentation, several members have volunteered to help you increase your Red Wing knowledge. Scheduled speakers are as follows:

- What's New with the RWCS Foundation: Ron Linde, RWCS Foundation president
- Dump Finds: Austin Fjerestad
- Intro to Dinnerware: Larry Roschen and Terry Moe (two-part session)
- Salt Glaze Stoneware: Rick Natynski
- Special Guest Speaker: Iowa Stoneware Exhibit: Michael Smith, Iowa Historical Society curator. (This exhibit at the Iowa Historical Society Museum in Des Moines is free and open to the public, and guided tours might be available during MidWinter. Check postings at the hotel.)

I've had some requests for an Art Pottery session and it's not too late to consider presenting at MidWinter. If anyone is interested in heading up a round table to bring the Red Wing art pottery collectors together, please contact me at EDUCATION@REDWINGCOLLECTORS.ORG or 712-644-2256. Otherwise I will see you in Des Moines.



2009 DISPLAY ROOM: FIRST CALL

It's time to start thinking about being a displayer for Convention 2009. It might seem like a long time away, but it will be here before we know it! There is plenty of room for anyone who would like to display, although we do give spaces on a first-come, first-serve basis so get your request in early to be guaranteed there will be space left!

Although there might be a few extravagant displays every year, don't feel it's mandatory to go above and beyond. You can put up a display without any rare or notable pieces; it's all about sharing your passion and educating your fellow members. Please remember, all displays

are entirely voluntary and we are very grateful to anyone taking the short amount of time to bring a few pieces and put them on a table. It's a great chance to meet other Redwingers, find out some new information and have a shot at winning a Special Commemorative.

To take advantage of this wonderful opportunity, contact me at DISPLAY@REDWINGCOLLECTORS.ORG or 605-464-5941. I will also be around at MidWinter, so if you're there and feel like talking about a display, just follow the signs!

-Laura Beall, Display Room Chairperson

CHAPTER SOUGHT FOR 2009 CONVENTION BUTTON

At least one chapter has expressed interest in producing the Convention Button for 2009, but the RWCS Board of Directors has yet to award the project. Does your chapter have what it takes? Contact representatives at large Jerry Erdmann or Russa Robinson (contact info on page 2) for more information. The Society has start-up funds available to loan for the project that can be repaid after Convention. Chapters that have never created the RWCS Convention Button are given first consideration.

WESTERN STONWARE RECREATING MONMOUTH PIG

Monmouth Pottery was one of the companies that merged into Western Stoneware in 1906. One of the items Monmouth is remembered for is the pig it produced. Western has recreated this 100-year-old piece with the Western name in partnership with the Monmouth Area Chamber of Commerce.

The project began with the Monmouth Area Chamber of Commerce acquiring the assistance of a local artist, Bill DeSelms of Pheasantry Studio in Roseville, Ill. Bill carved a clay replica of the Monmouth pig with the Western name and the maple leaf on the side. With the hardened clay replica he constructed a silicone rubber mold in which he made a casting. The stoneware mold then made at Western ended up being a complicated eight-piece mold.

The Monmouth Area Chamber of Commerce is pleased to bring back history with

the WSCo stoneware pig. Orders are being taken for the first production piece that will be a



zinc glaze pig with cobalt blue sponging made exclusively for the Monmouth Area Chamber of Commerce. The pig will be approximately 3¼ inches tall, 6¾ inches long and embossed with "2009." Orders are being accepted until Feb. 1, 2009 and the pigs will be available later that month. They are \$75 each and shipping is \$10 for one, \$15 for two and \$20 for three to six. If you would like to order one as a Christmas gift, a card can be returned to give the recipient, showing them that the piece has been ordered for them and will be available in February. Contact the Monmouth Chamber with any questions or to place your order at MACCDIR@MAPLECITY.COM or 309-734-3181.

A Jug's Connection to Denver's Shady Past

As far as election debacles go, the hanging Chad incident from the 2000 presidential election might have been a doozy, but you need to go all the way back to the 1889 Denver mayoral election to find an election fiasco with ties to a piece of Red Wing advertising.

It was clear early on that Wolfe Londoner was destined for big things. Born the son of a wealthy merchant in New York City in 1839, his adventurous spirit overtook him early on and led him to do something that most of today's 13-year-olds would never even dream up; he boarded a steamship bound for California and found jobs working at a hotel and an auction house, where he eventually saved up enough money to open his own grocery store. He stayed in California for four years until his parents convinced him to return home to New York and go into business with his father.

Stints in Dubuque, St. Louis, Carson City and California Gulch followed before Londoner put down roots in Denver, where in 1865 he opened his own business. Before long his prosperous grocery store built a large and increasing trade that reached throughout Colorado and into Kansas, New Mexico and Wyoming. He also opened a branch store in Leadville, Colo., which was managed by his youngest brother, Joseph.

Over the next decade, Londoner built a respectable fortune and became a Denver figurehead, holding stock in the Denver & Rio Grand Railroad, serving a term on Denver's Board of Aldermen and holding the position of vice president in the Denver Press Club. In 1887, the business was moved to the Londoner Block, a large four-story building located at

1624-1630 Arapahoe Street. It was around this time that Londoner commissioned two different Red Wing molded bird advertising jugs bearing his name – one with embossed lettering and one with impressed lettering.

Londoner won the nomination for mayor on the Republican ticket in 1889. Denver's thriving liquor industry raised a \$20,000 war chest to help him get elected, and it wasn't going to take any chances that Londoner would be elected on his own. A number of friends including well-known Wild West characters Bat Masterson and Soapy Smith tempted voters with a couple bucks and a drink if they cast ballots for Londoner in the names of dead people or names pulled out of a Kansas City directory.

When honest voters approached the polls, they were often told someone had already voted in their names. With many lawmen on Londoner's side, complaints to the police were dismissed, and some people were even tossed in jail. Londoner won the election by only 77 votes and became Denver's 20th mayor.

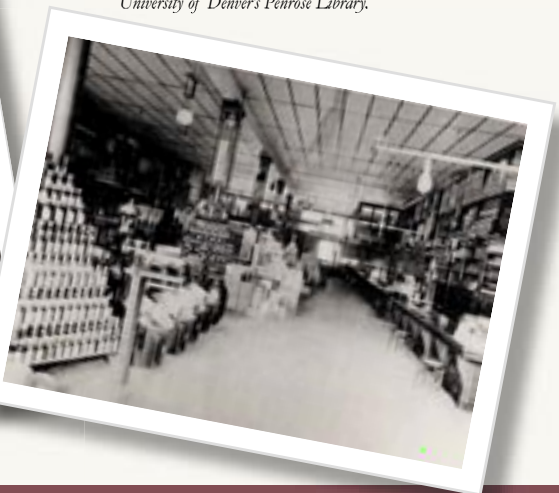
Accusations swirled and opposing candidates filed charges, sending the case to court. The jury determined that Londoner should step down from office on April 6, 1890. He made an appeal to the Colorado Supreme Court, but the lower court's decision was upheld on Feb. 7, 1891 and he was removed from office shortly before his two-year term expired. Londoner remained in business until the time of his death in 1912. ■




Jug photos courtesy of RWCS member Jack May

Not only are the jugs above two of the only Denver advertising pieces Red Wing is known to have made, but they're also two of the only molded bird jugs known to be produced with advertising.

Article Source: "Colorado Whiskey Bottle Collecting," Eatwell, John M., Winter 2003 Bottles and Extras, pgs. 52-53. Historical photos of Londoner and the interior of his store courtesy of Denver Public Library's Western History Dept. and the University of Denver's Penrose Library.



Did You Know? Red Wing pieces with Colorado advertising are far and few between. A few of the only pieces known to exist include the Londoner jugs discussed above, a jug with "Chicago Liquor House" advertising from Pueblo, a paneled sponge bowl with Yuma advertising and a bean pot boasting advertising from Amherst.

A photograph of a man, Bill Furdon, peering through two rows of colorful ceramic vases lined up on a white surface in his kitchen. The vases are in various colors including red, green, blue, and yellow. The man's face is visible between the rows of vases.

RED WING ART POTTERY: ALIVE AND WELL ON THE EAST COAST

STORY BY RICK NATYNSKI

Above: RWCS member Bill Furdon peeks through two rows of #871 vases lined up in his kitchen. Below: Bill's first piece - a simple Charles Murphy M-5008 compote.

With most of the RWCS membership centered in the Midwest and a fair number of collectors scattered across the West, the East Coast is one place where you don't typically find Red Wing lovers. But there are always exceptions to the rule, and in this case, one of those exceptions is RWCS member Bill Furdon.

Since he began collecting in 1994, Bill has amassed an art pottery and dinnerware collection of more than 2,000 pieces. Nope, that's not a typo. He tries to pass it off by explaining that many of the pieces fall into his four complete and three partial dinnerware sets, but let's give credit where credit is due. Two-thousand pieces is an awe-inspiring number no matter how you try to color it.

Bill's Red Wing collection fits in quite well at his contemporary home located on the tip of Cape Cod in Provincetown, Mass. In fact, it's taken on a life of its own, greeting him every morning next to the computer, accompanying him to every party and family gathering and holding his pencils at work and his toothpaste at home. Just like most collectors, it all started fairly innocently.

"I was dating an antique dealer at the time that was collecting Majolica pottery and I was becoming very familiar with the hunt for the perfect piece," Bill explains. "Flipping pottery, looking for marks, feeling for nicks and chips...you name it and I was doing it. It was suggested that I might want to start collecting my own type of

pottery, but I couldn't afford Majolica and I didn't quite know what type of pottery I was interested in."

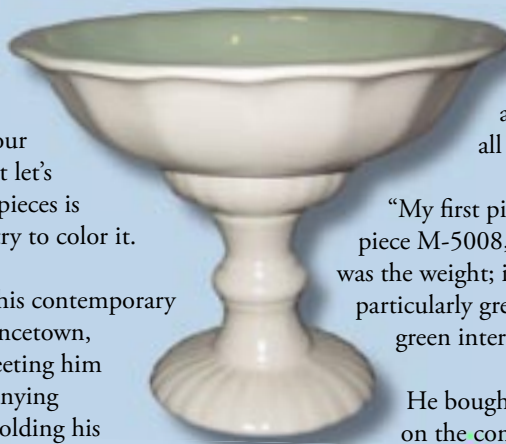
Armed with a Bachelor's degree in fine art painting, he was familiar with ceramics and pre-poured molds. He liked Roseville and Rookwood, but they seemed expensive at the time and he wasn't a fan of some of their glazes and choices of subject matter.

But seeing that first piece of Red Wing in an antique shop in downtown Provincetown of all places was like a huge light turning on for Bill.

"My first piece was a simple compote, a Charles Murphy piece M-5008," Bill says. "The first thing I liked about it was the weight; it didn't feel flimsy. Even though it was not a particularly great glaze combination being white with a light green interior, I liked it."

He bought it for \$15 and decided to do some research on the company, but all he could find at the time were references to crocks and utilitarian ware. His compote couldn't be any more different and he doubted it had come from the same company, assuming that some other manufacturer had bought out Red Wing and used the name.

Two weeks later he found his second piece about 150 miles from home in Taunton, Mass. It was another compote – this time pink fleck. It was a beauty, and just like that, he was hooked.



"I started going to antique shows and asking about the pottery," Bill says. "I found out they had many dinnerware lines and the first reference book that came close to the type of pottery that I was interested in was the Bougie-Newkirk *Red Wing Dinnerware* book."

Later Bill was at an antique show in Connecticut when he came across two identical #1279 Red Wing vases that had a sharp blue crackle glaze with a bronze interior. The dealer wanted \$113 for both of them. Still being a rookie, Bill asked how he came up with the price and what made them so special.

"The dealer said, 'Just look at them – you can tell they're quality pieces and I've heard that a book is being written about Red Wing art pottery with a price guide,'" Bill recalls. "Once it's out, the prices are going to skyrocket."

Hearing that, Bill decided to bring in re-enforcements to help him build his collection, dragging friends and family into his budding addiction. Since he didn't know what to tell them to buy, he asked them to pick up everything Red Wing priced under \$20. He did make one concession, though. He couldn't pass up on those blue crackle vases.

When Ray Reiss's *Red Wing Art Pottery* book was released in 1996, Bill would have camped out overnight to get his hands on a copy like a crazed parent at a Black Friday Tickle-Me-Elmo Doorbuster Sale had it been necessary. He went through each page like a kid going through the Sears Christmas Catalog.

"I was excited about some of my purchases and disappointed in Reiss for my less-valued pieces," Bill laughs. "But paging through the book, I could see the possibilities, the creative shapes, glazes and interior color combinations...this company was clearly on mark for the time with its designers and concepts."

After nearly 15 years of collecting, Bill has become somewhat of a pro, but with that comes having more Red Wing than he knows what to do with. Much of his collection is relegated to large marked plastic tubs in his storage unit, his art pottery collection broken down by shape number, glaze or pottery line.

"I have several pieces of Doric, Hobnail, Oxford, Bronze and Monarch line, and I collect certain types of glazes such as Cracked turquoise, the flecks, travertine and luster burgundy," Bill says. "I also like to focus on things like the footed bowls and the pineapple shape M-1442. I have more than 30 #871 vases and I also like shape #M-5000."

His collection also consists of many platters and service pieces, and he has complete sets of Bob White, Lute Song, Pepe and Capistrano dinnerware. Now he's working on Tampico, Lanterns and Smart Set. With so many options to choose from, he usually rotates a dinnerware pattern in his kitchen on an annual basis.

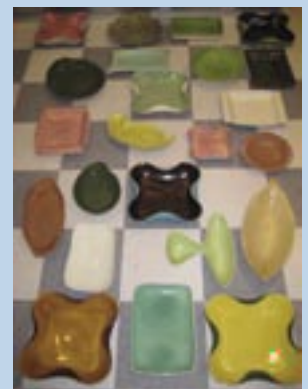
Although you'd think that he would be a regular at the July Convention in Red Wing, summers on the Cape are Bill's busiest time of year. However, he hopes to make it out to his first Convention sometime soon. Although you aren't able to tell by the sheer size of his collection, he admits that finding Red Wing in New England is a little tricky since Massachusetts and its surrounding states are very "Old World."

"You see lots of spinning wheels, stenciled walls and butter molds at antique shows," he says. "The public out here is not very conducive to blue fleck or Prismatic bowls. Half of my collection was found in thrift shops, antique stores and yard sales, but the rest has come from eBay."

Bill says he enjoys displaying Red Wing's complimentary glazes and shapes in his home, as they add a lot of interest in a room. He has two display areas in the house and moves the collection around from time-to-time to utilize it for entertaining. Now one of his greatest enjoyments is passing the Red Wing bug along to others.

"If you're a friend of mine, you probably have a piece of Red Wing," he says. "I like to pass some pieces on and bring them to parties as a gift filled with desserts or fruit. Most of my friends have learned about Red Wing from only one visit to my house, and some have even started their own collections." ■

Photos: Pictured from the top down are Bill's impressive collections of Doric, fleck, platters, footed bowls and #871 vases. (Photography by Bill Furdon and Pat Fecher.)



PATENT APPLIED FOR

Our interest in Red Wing and our first visit to the beautiful river town was inspired by our reading of Lyndon Viel's *Clay Giants*. To us, his stories are still great reading and when he graciously autographed his third book for us at the second Convention we attended, it really made our day.

One of the topics covered in his books that we found intriguing is the bailed handles on some of the crocks that were produced. In his first book, he had two pictures on page 89 showing the two different stamps that are found on most of the handled crocks. One stamp is "PATENT APPLIED FOR" and the other stamp is "PATENTED Dec. 21st 1915." There's a photo on page 122 of *Clay Giants 2* of the application submitted to the U.S. Patent Office by E. S. Hoyt. In *Clay Giants 3*, these photos are found on pages 142 and 143.



Prior to U.S. Patent Office approval, Red Wing bail-handled crocks were stamped "Patent Applied For" on the lug.

The application form was dated Aug. 27, 1915, so we can surmise that the "Patent Applied For" stamp was used on crocks with bailed handles for approximately four months. Company catalogs from that time period show crocks ranging in size from 4 gallons up to 30 gallons being sold.

With that as background, we couldn't help but respond to an ad in the December 1988 *RWCS Newsletter* which offered a 12 gallon "Patent Applied For" crock in excellent condition for \$130. We called the owner, who lived in Iowa, and he accepted our offer of \$120. We live a few states away in Ohio, but he happened to have relatives from Columbus, Ohio visiting over the holidays who would be willing to bring the crock back with them. On Jan. 7, 1989, we drove about an hour to their home and started our collection of bail-handled crocks.

Our next crock was a 20 gallon from Jeanine's in downtown Sparta, Wis. We found this one on July 9, 1994 on the way home from Convention. It cost us \$116 and is unique because the stamp is not on the top of the lug, but on the side several inches below it.

Our third crock was a 25 gallon that we left sitting at first at the Oakdale, Wis. Antique Mall on the way to Red Wing in 1997. The asking price was \$250, which we thought was too high until we saw the high prices on regular pieces around Red Wing. That led us to call them and we were able to get a 10 percent discount, so we picked it up on our way home.

On July 8, 1998, we found our 10 gallon crock at the Countryside Antique Mall in Cannon Falls, Minn. for \$175.

Our fifth "Patent Applied For" crock was a 30 gallon that Al Kohlman had in the Pottery Place Mall parking lot during Convention, which we bought for \$275. We really appreciated his help, as he took it back home to Southern Wisconsin while we took the week following the 2001 Convention to explore northern Minnesota for the first time. We stopped at his house on our way home to add the crock to our load. It was nice to see Al featured in a recent newsletter adding a great 2 gallon churn to his collection.

We bought our 8 gallon crock at the large antique mall in Columbus, Wis. for \$110 in 2003.

It was becoming apparent that the 15 gallon crock was the hardest one to find as we were always looking and asking others. Larry Peterson of Larry's Jugs reported having sold one several years earlier, but other collectors reported they also were having no luck, so the excitement level really rose on July 6, 2008 when we saw a stack of three "Patent Applied For" crocks in the Pottery Place Mall's parking lot. Bob Morawski, who's now the RWCS Commemorative Manager, sold it to us for \$450. He said he bought it from Larry Peterson several years earlier, so this was the one Larry was talking about. Costing about 30 percent of the total value of the seven crocks in the collection, it was a lot to pay. But after taking 19½ years to complete the 11-foot, 7-inch tall stack, it was probably worth it. It has been a great adventure.

A few questions remain. Are there "Patent Applied For" crocks out there in the 4, 5 or 6 gallon sizes? If you have one, we'd love to hear about it. We've also seen a couple pictures of bail-handled crocks in the 2 and 3 gallon sizes too, so we wonder if those have a "Patent Applied For" stamp near the lug. And finally, although they're not easy to find, we know there are bail-handled churns out there, too. However, we've yet to find one with the "Patent Applied For" stamp.

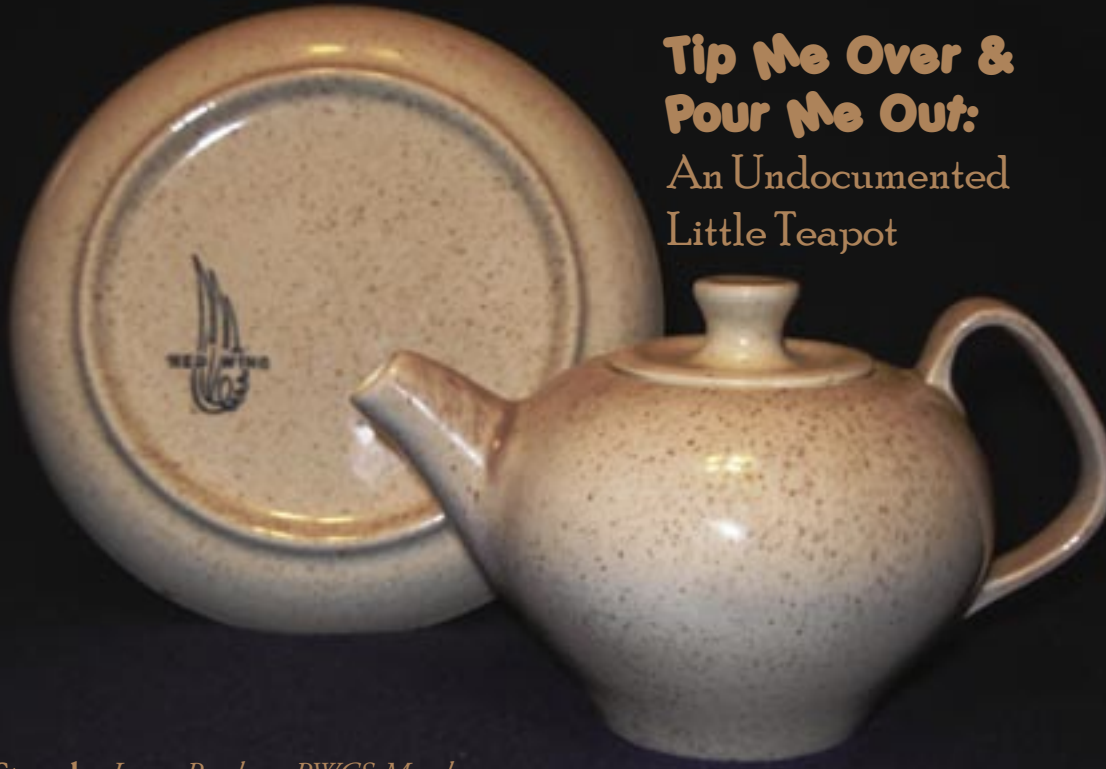
If you have any of these pieces, we'd really like to know about their existence – even if they're not for sale. Please contact *RWCS Newsletter* Editor Rick Natynski, and he'll put you in touch with us. After all, the hunt for that next great piece is what makes collecting Red Wing so much fun. ■



Once the patent was approved, the stamp at left was applied to bail-handled crocks.



Tip Me Over & Pour Me Out: An Undocumented Little Teapot



Story by *Larry Roschen, RWCS Member*

I recently acquired this odd little teapot, and I'm wondering if anyone has any information on it. This is definitely an individual size teapot that holds no more than two cups. The dimensions are 6 inches from the tip of the spout to the handle, 4 inches wide and 3½ inches tall to the top of the cover's knob. The teapot is not marked, but it was purchased with the beige fleck 6-inch plate seen in the photo. The plate is marked with the upright wing ink stamp, which is found on Hotel & Restaurant China and "leftover" pieces finished shortly before the Red Wing Potteries closed in 1967.

The spout, handle and color have the Red Wing look but I'm not aware of any documentation. I've seen at least one other example of this teapot in beige fleck as well as one with what appeared to be the green glaze from Village Green. Possibly this was a new production piece introduced shortly before the closing of the Potteries. It may also go with a group of undocumented dinnerware shapes that we speculate was to be an updated version of Hotel & Restaurant China. Any observations on this piece are welcome.



Notes:

RWCS member and Convention Display Chairperson Laura Beall observed that the teapot has a base and handle that's similar to the creamer and beverage server from the Continental Buffet line, which are shown at right, respectively.

One of the most comprehensive dinnerware resources out there – WWW.REDWINGDINNERWARE.COM – has a picture of a teapot like Larry's listed under the Hotel & Restaurant line, and also contains a photo of the teapot pictured at right.



Trails West Chapter

The fall meeting of the Trails West Chapter met at the home of Bob and Vivian Perry in Lee's Summit, Mo. on Oct. 18. Bob served up a wonderful smoked turkey and ham to go with the pot luck accessory dishes and desserts brought by the 23 chapter members in attendance. The luncheon was followed by a business meeting covering the last meeting's minutes, a progress report on our next commemorative, an update on the housing situation at Red Wing and election of officers for the next two years. A special presentation was made to Linda Russell, Kay Salisbury and Vivian Perry for their past service as officers in the Trails West Chapter. Each officer was given a commemorative jug with their name, position held and years of tenure. The first annual fund raiser auction held during the meeting of donated items was a great success, bringing in \$800 for the chapter treasury. The Show & Tell highlights included a mint 1 gallon "winged" crock and lid, a 3 lb. North Star butter with full bottom mark, a 3 gallon elephant ear crock and a 6 quart salt glaze Eastern crock with a beautiful bird drawn in cobalt. The next Trails West meeting will be held at the MidWinter GetTogether in Des Moines in February.

Siouxland Redwingers

8:30 p.m. Friday, Feb. 6 at the MidWinter GetTogether in Des Moines, Ia.

Did we miss you? Contact editor Rick Natynski with your chapter news before Jan. 15 to be included in the February *RWCS Newsletter*.

\$1.50

NO. 18



A HARROWING
NEW EPISODE
OF EXCAVATION
FROM THE
INSANELY DARING
RED WING POTTERY
DUMP DIGGER,
AUSTIN FJERESTAD!

CHOCK FULL OF DISCOVERIES!

TALES FROM THE DUMP



With new areas opening up and the ever-continuing mapping of the Red Wing Pottery Dump, Steve Showers, Dennis Nygaard and I are always learning new things. Over the last couple years, we've been finding areas that predate most of the previously dug areas in the dump. We now know that certain spots 4 to 6 feet down, slightly above the water line, contain very old portions of the dump – many dating to the 1880s. One of the most notable discoveries here are forms of salt glaze crock lids that predate the typical petal lids we're most accustomed to seeing.

As most salt glaze collectors know, Red Wing Stoneware salt glaze lids are hard to find. When you do find one, it usually has petals – just like the ones on zinc glaze lids. These petal lids are so dominate that it's common for a collector not to be familiar with some of the earlier, petal-free lids. In fact, you might have seen one of these somewhere and not realized what it was. Some collectors might think they're Minnesota Stoneware salt glaze lids, but the ones described below were in fact produced by the Red Wing Stoneware Company in the 1880s.

In an area of the dump that we've recently been digging, we've only found these types of lids; no standard petal lids have been found in this area at all. All of these lids have unique features that scream "early production." Here I have



listed details about each version of lid we've found, along with a picture.

Before I go any further, I should mention two features of these lids: there are no numbers on the buttons and they have a flatter, more flared rim without the stacking ridge found on the more modern salt glaze lids. In fact, as the photos depict, the overall shape of these lids is unique and flatter than that of the standard petal lids.

1 GALLON RING LID.....A

The 1 gallon lid from this era has a ring around the center and no other decoration. There is a low, flat dome to the lid and the button is quite round on

the top – more so than the other lids. It's also interesting that there is no number or slashes on the button of this size lid. Someone once told me that lids with no numbers on the button were made for water coolers. Although this was the case with zinc glaze Ice Water coolers, I'm not convinced this was true during the salt glaze era. (If it is true, then Red Wing Stoneware made a lot of 1 gallon salt glaze coolers!) These lids are rare, although they happen to be one of the most commonly found lids in the area we've been digging. Whole examples of all salt glaze and brown center lids have been dug. We first discovered these in 2005 near an area we named the Supreme Ultimate Vein (SUV) because it was so darn good.

2 GALLON PUFFY PETAL LID.....B

The 2 gallon lid was a new discovery in 2008 found near the area we call Water Cooler District 2. When preparing for a dig back in April, I noticed that Dennis had a piece of an early styled lid in his pile of shards. I looked at it and told him it was different than the raised triangle lids described below, as it had a strangely shaped petal and looked to be 2 gallons in size. Less than a week later, Dennis dug an intact example of this lid! This lid has nine petals and a puffy petal with round edges that doesn't resemble the pointed petals found on the other lids. The petals also take up less space on the lid and a large portion of the inside of the lid is the ring around the central button. The

button on this lid is also rounded out slightly more than the others. Variations of this lid have been found with two slash marks indicating it's 2 gallons in size; but most don't have these marks. Shards from this lid have been found in the dump, but no intact ones have been discovered as of yet.

3 GALLON PETAL AND ARROW/ RAISED TRIANGLE LID.....C & D

This lid was discovered in November of 2007, but Dennis remembers digging shards to it back in 2005 in Water Cooler District 1. We did not have examples of intact lids to these before, but we now know that Steve dug an all salt glaze lid years ago and he considered it to be a Minnesota lid. With more of these lids being found deep in the dump, usually 5 to 8 feet down, we know they are early production. Dennis dug a whole all salt glaze lid in November 2007, which we thought to be a 2 gallon at the time, and later we dug a brown center lid as well. My lid has three slashes near the button, for 3 gallons. Dennis had this on his lid as well, but due to the heavy salt glazing it was not as apparent. We now know this is a 3 gallon lid. This made us wonder what the 2 and 4 gallon lids looked like. This lid and the 5 gallon really got us thinking as to why these types of lids were being made in this era. So really, this lid discovery sparked it all. The lid has a petal pattern and a raised chevron or triangle between each petal tip. This pattern had not been recognized as a true Red Wing lid by anyone to date, but now with the new areas being dug, we have found more and know more about this lid. The button on this lid is blank as all the others and has a rounder, knob-like feel to it.

4 GALLON PETAL AND ARROW/ RAISED TRIANGLE LID.....E

This lid is the same as the 3 gallon lid, with the exception of it having a wider ridge and larger diameter. The ridge also looks to be a transition to the more modern stacking ridge as found on the standard petal lids. I discovered this lid in January of 2008 when I dug one that was broken in half. When I got it home, I saw it was bigger and did not fit as well on my 4 gallon cooler as the 3 gallon lid did. Thus, it was a bigger lid. This lid does not have the slash marks like the 3 gallon does. It's void of any number as is Steve's all salt version, so it's quite likely that this lid was never made with a size indicator.

5 GALLON OAK LEAF LID.....F & G

The 5 gallon oak leaf lid is the meat of all the lids we dug and it's also the one peo-

ple are most familiar with. We don't know when this lid was first discovered; but bits and pieces have been found in salt glaze veins since the 1980s. They were found so sparsely that not even a partial example was dug until around 2005. On one glorious day in November 2007, Dennis and I dug an all salt glaze oak leaf lid broken in half. Since then we have found shards to seven others, most being brown center! We have nearly all the pieces of three of these lids, all of which were dug in the same vein that the other lids discussed in this article were found. The 1, 3 and 4 gallon lids, as well as the lid discussed below, were dug under five feet of rock and clay just above the water line in the SUV District. As of now we have two all salt glaze oak leaf lids and two brown center lids with few pieces missing, if any.

For a long time no one knew the true purpose of this lid, and we still don't really know for sure. Decorated with seven oak leaves circling a large portly knob, this lid has a regular dome shape and rises up an inch high from its edge. The rim, edge and knob all match the style of lids we dug in this very vein, so we now know why the oak leaf lids are so hard to find: they were made earlier than the dominating petal lids!

8/10 GALLON OAK LEAF AND PETAL LID.....H

In December 2007, Dennis began digging out a familiar-looking lid that was upside down deep down in a vein. We both knew it was an oak leaf lid in the larger size. I discovered this variation in 2006, when I noticed there were petals and oak leaves on a shard I dug. This lid has seven oak leaves in the center just as the 5 gallon lid, but also about 15 petals around the leaves. The ridge on this lid is one inch long, and has the biggest overhang other than the larger 20 and 30 gallon lids. This lid is very flat and has a ridge under the lid where the oak leaves meet the petals. This is how we knew what kind of lid it was even though it was upside down when being dug out. No whole examples of these lids have been found, but we do have half of a brown center lid. Shards to all salt glaze lids have been found, but not enough to even think of assembling one yet.

Despite knowing that these oak leaf lids were made early in the life of the Red Wing Stoneware Co., we still don't know exactly what they were made for. Perhaps they were just early lids like all the others found here. More digging in this area might prove that to be true. So far we

have not found any petal and arrow lids larger than 4 gallons, and no other strange lids have been discovered except for what we believe to be meat roaster lids. As time allows and digging continues, we might someday unlock the legend of the oak leaf lid!

The final question to address here is why the production of all the lids discussed in this article were cut short and replaced by the standard petal lids that we're most familiar with. The easy answer, and probably the right one, deals with time and money. We think it's safe to assume that Red Wing would try making different things, but once they found the most efficient method of making a quality product, they stuck with it. Something about making these lids either took too long or else it was decided that the petal lids that we're most familiar with were a better-looking product of higher quality. ■

IN A FUTURE INSTALLMENT OF TALES FROM THE DUMP, AUSTIN WILL DISCUSS THE MEAT ROASTER LIDS HE AND THE OTHER DIGGERS HAVE FOUND!



WOW!

Dump digger Steve Showers recently unearthed this awesome 20 gallon salt glaze salesman's sample crock decorated with a huge cobalt leaf when digging in the Red Wing Pottery Dump. It's about the same size as the 1977 RWCS Commemorative, putting it between 4 and 5 inches tall. It was likely discarded long ago because the cobalt decoration was blurry, but there's no doubt it's an incredible treasure by today's standards. Obviously, salesman samples are quite difficult to find, especially in salt glaze form. Congrats, Steve!

AD RATES

Classified ads are 20¢ per word; \$4 minimum charge and are accepted on a first-come, first-served basis.

Ads are divided into the following sections: Red Wing For Sale, Red Wing Wanted, Other Pottery For Sale, Other Pottery Wanted, Events, Auctions, Clubs & Publications and Websites, Announcements and Services. You will not be charged for these words, but please indicate which section your ad should be placed in. If ad is to run in more than one issue, please indicate at time of placement. (Note: the small number at the end of an ad tells when the ad expires, e.g., 12/07. Ads without dates are one-time ads.) Please type or print clearly and proof read before submission.

DISPLAY ADS

Display Ad Size	1x	6x
Full page	\$425	\$385
1/2 page (<i>horizontal or vertical</i>)	225	205
1/4 page	125	115
1/8 page	85	70

Display Ad Dimensions

Full Page	7 1/2 x 10
1/2 page (<i>horizontal or vertical</i>)	7 1/2 x 4 7/8
1/4 page	3 5/8 x 4 7/8
1/8 page	3 5/8 x 2 1/4

Display Ads are accepted on a first-come, first-served basis. The publisher reserves the right to refuse ads for any reason.

Ads must be supplied electronically as an EPS or PDF file for PC. If you are unsure about acceptability, inquire with the Editor. There is an additional 10 percent fee for design and makeup if needed.

DEADLINES

Issue	Ad Deadline	Editorial Deadline
February	Jan. 10	Jan. 1
April	March 10	March 1
June	May 10	May 1
August	July 25	July 15
October	Sept. 10	Sept. 1
December	Nov. 10	Nov. 1

EDITOR ADDRESS

Make checks payable to RWCS and mail with ads to: Rick Natynski
PO Box 441
Elm Grove, WI 53122-9998

Ads may also be e-mailed: NEWSLETTER@REDWINGCOLLECTORS.ORG with checks sent separately. Or, call Rick at 414-416-WING (9464).

CLASSIFIEDS

RED WING FOR SALE

Handles and wooden lids. Send SASE for flyer to Larsen's Collectibles, 757 120th Street, Hampton, Iowa 50441-7555. Phone 641-866-6733. 8/09

2008 Red Wing National Convention Buttons: \$3 each, which includes handling & shipping to any location in the U.S. Contact Southwest Redwingers Chapter President Chuck Hanson at 507-282-0837, CDHANSON302@MSN.COM or by mail at 4888 Tee Ct. SW, Rochester, MN 55902.

Complete set of RWCS Commemoratives (1977-2008) mint condition, \$6,000. Bob White Lunch Hour tile by Edna Boldt featured on back of June 2006 *RWCS Newsletter*, \$1,200. Two 12-piece place settings of Bob White including dinner/salad/bread & butter plates, and cup & saucer, \$450 each set. All other pieces available including pepper mill, tumblers, mugs and 2 gal water jar w/solid base. Call 913-721-2188 for prices or price list. If no answer, leave number and we'll return your call. 2/09

Are you looking for a particular 2 gallon churn or a particular piece of art pottery? Leave a message at 952-922-9169 for Ron Linde. 12/08

Large Bob White collection. Many unusual pieces. If interested, e-mail CESBROOK@COMCAST.NET or call 847-458-4280 after 5 p.m. \$500/OBO plus shipping.

We're bringing many different rare pieces of stoneware to MidWinter; salt glaze crocks and churns, advertising jugs, crocks, rolling pins, beater jars, mini jugs, etc. We might have what you're looking for, send us a list. JJCARTER47@MCHSI.COM - Jimmy and Becky Carter, PO Box 725, Oskaloosa, IA 52577. We'll be in Room 140.

Commemoratives: 1995 Giraffe, 1996 Cookie jar, 1997 Butterfly crock, 1998 Iris pitcher, 1999 Koverwate, 2000 Hamm's Pitcher - all mint, last four in boxes - all six for \$400. 1950s Red Wing ashtray, mint, \$60. Other Red Wing available. Contact Paul in Morris, Minn. at 320-589-0045 or 320-585-7604.

3 gal churn with 4-inch wing and Union oval, good condition. Complete with lid & dasher, \$295. Call 651-784-2357.

RED WING WANTED

Wanted - Minnesota Twins ashtray (4 1/2" x 6") in the shape of Minnesota. I have dark brown, tan and white, but I need green and any other color that exists. I have extra tan and white for sale or trade. Please let me know if there are any other colors than the four listed above. Contact Clyde at CLYDEJANDOEPLNER@AOL.COM or 651-227-5284. 12/08

Wanted: Red Wing Dinnerware in the 'Midnight Rose' pattern. Contact Doug at BIGREALESTATE@HOTMAIL.COM with available pieces and prices.

Wanted: Seeking Charles Murphy art pottery in excellent condition: figural pieces, "African" or "Congo" line, Engobe line, tall pumpkin and drum cookie jars. Please email me at ANTAYB@EARTHLINK.NET.

Wanted: Old Racine, Wis. advertising items wanted. E-mail HORLICK@WI.RR.COM or call 262-554-0488. 12/09

AUCTIONS

7th Annual Stoneware/Pottery Auction Sunday, March 1, 2009 at 12:30 p.m. at Storden School City Center, Storden, MN. 300+ Pieces Stoneware & Art Pottery, Roseville, Red Wing, Hull, McCoy, Watt, Rumrill, much, much more. Croatt Auction Service: John Croatt 17-32 at 507-445-3919, 507-830-1984, WWW.RRCNET.ORG/CROATT or WWW.MIDWESTAUCTIONS.COM 2/09

WEBSITES

Visit WWW.RAREREDWINGCOLLECTABLES.COM - a unique, new approach to buying and selling. Open to marketing your rare Red Wing pieces. Check it out! 12/09

CLUBS AND PUBLICATIONS

2005 stoneware book (*Antique Trader Stoneware Price Guide*); includes Red Wing; Monmouth-Western; Blue/White; Eastern U.S. 288 pages; colored photos; \$20 postage paid. Gail Peck, 2121 Pearl, Fremont, NE 68025; 402-721-5721. 12/08

NEW 2009 values for *Red Wing Stoneware* for \$12.95 and 2008 values for *Red Wing Collectibles* for \$9.95 or \$19.95 for both plus \$2/\$2.50 postage, respectively. Quantity discounts available. Gail Peck, 2121 Pearl, Fremont, NE 68025; 402-721-5721. 12/08

Blue & White Pottery Club - Visit the club's website for membership form at WWW.BLUEANDWHITEPOTTERY.ORG. Annual membership is \$15 for first member, \$5 each additional member and \$1 for members under 12 years old. You can also write to B&W Pottery Club, PO Box 460517, Aurora, CO 80015.

Collectors of Illinois Pottery & Stoneware - Visit the club's website at WWW.COIPS.ORG for membership form. Annual membership is \$20 for the first member of the household and \$5 for each additional member. You can also write to COIPS, c/o Susie Nolan, 402 N. Laurel St., Elmwood, IL 61529 or e-mail COIPS@MCHSI.COM.

• NO COMMISSION EVER!

• Sell for 60 Days FREE!

• ALWAYS FREE listing Options!

SeeAuctions.com

RICH FEATURES-

- Google checkout
- Paypal integration
- Full item and store management

• Antiques • Collectibles • Fine Art • & More!

Get MORE for your items... Choose your ending!

RECENT FINDS & DEALS

Did you find a rare piece or a great deal worth sharing? Briefly describe the item, where it was sold, date purchased, venue (store, auction, etc.) and price paid. Send on a post card, or e-mail RWCSNEWSLETTER@WI.RR.COM, or enclose in an envelope if you'd like to include a photo for publication. Multiple submissions result in multiple entries in the Newsletter Special Commemorative Lottery at the 2009 Convention. Send to the editor at the address on page 2. All entries received between July 2008 and June of 2009 are eligible whether published or not. Please keep submittals with purchase dates within six months of the newsletter issue.

ITEM	LOCATION	DATE	VENUE	PRICE
White Iris pitcher w/Kenneth, Minn Farmers Co-op adv. inside	SW Minn.	6/08	Auction	\$60. ⁰⁰
Bisque Cowboy figurine	Albert Lea, Minn.	7/08	Antique shop	\$10. ⁰⁰
4 gal Pantry Jar, mint	Earl, Wis.	7/08	Antique shop	\$2,600. ⁰⁰
Red Wing Batter & Catcher, mint	Red Wing	7/08	Antique shop	\$2,600. ⁰⁰
Phoenix Club adv. mini jug, spout chip	Dell Rapids, SD	8/08	Auction	\$5. ⁰⁰
1 qt fancy jug marked R.W.S.W.	Minneapolis	9/08	Antique shop	\$4. ⁰⁰
Gopher on football, mint	SW Minn.	10/08	Auction	\$65. ⁰⁰
Beater jar w/Gratiot, Wis., adv, mint	Milton, Wis.	10/08	Rummage sale	\$1. ⁰⁰
6 ½ inch Hamms snack (cereal/salad) bowl	Minnesota	10/08	Antique shop	\$4. ⁰⁰
White pegasus	Northern Wis.	10/08	Antique shop	\$90. ⁰⁰
5 gal wing crock w/#2 oval, mint	Minneapolis	11/08	Antique shop	\$20. ⁰⁰



RED WING STONEWARE MIDWINTER

AUCTION

Saturday, Feb. 7, 2009 – 6 PM
HOLIDAY INN & SUITES – DES MOINES, IA

40 gal. double birch leaf crock, 25 gal large wing crock, 10 gal large wing crock, 2 & 5 gal water cooler lids. Salt glaze: 6 gal butter churn w/target, 6 gal butter churn w/drop 8 & target, 5 gal butter churn w/drop 8, 4 gal butter churn w/target & drop 8, 4 gal birch leaf churn, Assortment of salt glaze, birch leaf, elephant ear & zinc 2 & 3 gal crocks, several advertising ½ and 1 gal jugs, mini jugs, some with adv., Spongeband bowls, Bulldog, RWCS Commemoratives 1990-2007, art ware, dinnerware, plus much more!



Catalogs available after Jan. 1 at \$5.00 each. See Web site for photos.

HOUGHTON'S AUCTION SERVICE
1967 LAUNA AVE. RED WING, MN 55066
651-388-5870 WWW.HOUGHTONAUCTIONS.COM

Give the gift of RWCS Membership this holiday season!

For only \$25, you can give a friend or loved one the gift that keeps on giving...a one-year membership to the Red Wing Collectors Society! We can mail the "new member" packet directly to the recipient, or send it to you so you can wrap it up.



For the fastest service, save yourself a stamp and save the RWCS Business Office some time by purchasing the gift of membership securely online with a credit card at WWW.REDWINGCOLLECTORS.ORG or call the office at 800-977-7927. You can also renew your own membership online hassle-free!

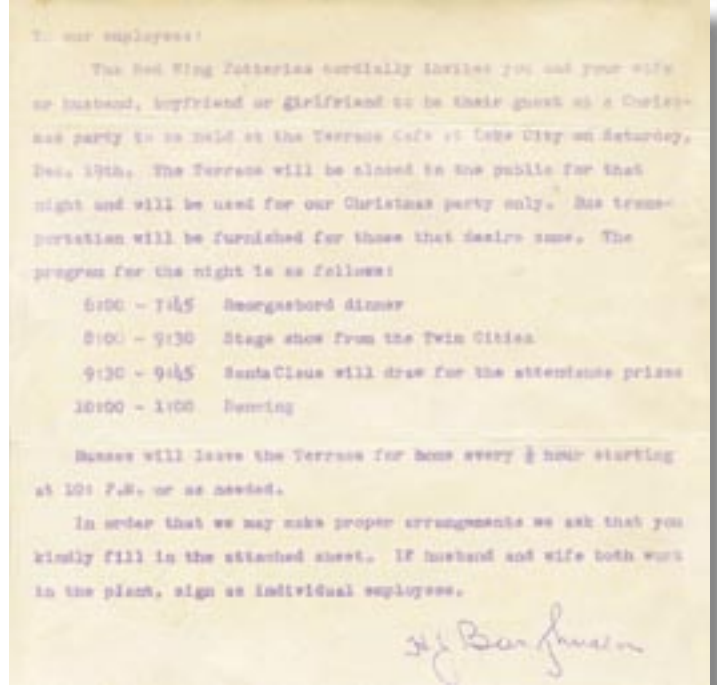
Remember, for every new primary RWCS member that you recruit or sign up between now and July 1, 2009, your name will be entered into a drawing to win free membership for one year and registration to either the 2009 MidWinter GetTogether or the July Convention. Any member that recruits five or more new primary members will automatically have their membership renewed for free for one year! Plus, the chapter with the most new primary members joining the Society will have bragging rights to the traveling Little Brown Jug of Membership. To learn more about how the program works, visit the RWCS website or call the business office.

RED WING EPHEMERA

SCHOOLHOUSE CROCK



THE 1954 POTTERIES CHRISTMAS PARTY INVITATION



When it comes to collecting paper items related to the Red Wing Potteries, the sky is the limit. In-depth articles covering different varieties of Red Wing ephemera will be included in future issues of the *RWCS Newsletter*, but for now, here's a small taste of what's out there.

A fun type of Red Wing ephemera to collect are postcards and other memorabilia that weren't distributed by the Potteries as advertising material, such as this undated photo of Owatonna High School's chemistry lab. Pictured in its element, this 15 gallon Red Wing crock was a staple of the day in schools and labs. Wouldn't it be cool to know where this crock is today?



There's nothing like a smorgasbord dinner to kick off the season! Thanks to Bruce Dissell who submitted this piece of Red Wing ephemera when he discussed his Uncle Nels' role as a cratemaker in the last issue of the *RWCS Newsletter*. It's refreshing to see that political correctness wasn't present back in 1954. The Potteries held a "Christmas" Party for its employees - not a Holiday Party. That's the way it was, and doggone it, people liked it!

COMING IN THE FEBRUARY ISSUE...



CONVERSATION WITH A POTTERIES PAST EMPLOYEE

ASK THE EXPERT: STONEWARE

