



VOL. 34 NO. 5

N E W S L E T T E R

OCTOBER 2009

Chromoline



RWCS CONTACTS

RWCS BUSINESS OFFICE

PO Box 50 • 2000 Old West Main St. • Suite 300
Pottery Place Mall • Red Wing, MN 55066-0050
651-388-4004 or 800-977-7927 • Fax: 651-388-4042

EXECUTIVE DIRECTOR: STACY WEGNER

EXECUTIVEDIRECTOR@REDWINGCOLLECTORS.ORG

ADMINISTRATIVE ASSISTANT: KATIE HARDYMAN

MEMBERSHIP@REDWINGCOLLECTORS.ORG

Web site: WWW.REDWINGCOLLECTORS.ORG

BOARD OF DIRECTORS

PRESIDENT: SUE JONES TAGLIAPIETRA

2219 Lakeland Ave. • Madison, WI 53704-5636

608-241-3072 • PRESIDENT@REDWINGCOLLECTORS.ORG

VICE PRESIDENT: JOLENE McKOON

3124 4th St., Unit 8 • Moline, IL 61265

309-797-3894 • VICEPRESIDENT@REDWINGCOLLECTORS.ORG

SECRETARY: PAULETTE FLOYD

208 E. Somonauk • Yorkville, IL 60560

630-553-9234 • SECRETARY@REDWINGCOLLECTORS.ORG

TREASURER: MARK COLLINS

4724 N 112th Circle • Omaha, NE 68164-2119

605-351-1700 • TREASURER@REDWINGCOLLECTORS.ORG

HISTORIAN: STEVE BROWN

2102 Hunter Ridge Ct. • Manitowoc, WI 54220

920-684-4600 • HISTORIAN@REDWINGCOLLECTORS.ORG

REPRESENTATIVE AT LARGE: RUSSA ROBINSON

1970 Bowman Rd. • Stockton, CA 95206

209-463-5179 • REPATLARGEWEST@REDWINGCOLLECTORS.ORG

REPRESENTATIVE AT LARGE: JERRY ERDMANN

W15416 Fair-Morr Rd. • Tigerton, WI 54486

715-535-2094 • REPATLARGEEAST@REDWINGCOLLECTORS.ORG

AUCTION MANAGER: TODD AVERY

29361 Flower Valley Rd. • Red Wing, MN 55066

651-592-3008 • AUCTION@REDWINGCOLLECTORS.ORG

COMMEMORATIVE MANAGER: BOB MORAWSKI

2130 S. Ridgeway Dr. • New Berlin, WI 53146

262-853-8269 • COMMEMORATIVE@REDWINGCOLLECTORS.ORG

EDUCATION MANAGER: GLENN BEALL

215 W. 7th St. • Logan, IA 51546-1221

712-644-2256 • EDUCATION@REDWINGCOLLECTORS.ORG

JULY CONVENTION SUPPORT PERSONNEL:

Pre-registration – JIM & JOYCE SUTHERLAND

AND JIM & KAREN KEYS

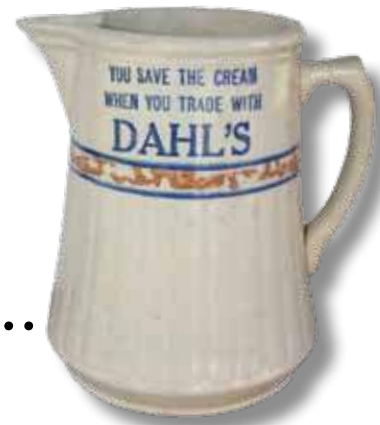
Show & Sale – CINDY & PETE MAY

423-639-2477 • SHOWANDSALE@REDWINGCOLLECTORS.ORG

Display Room – LAURA BEALL

605-464-5941 • DISPLAY@REDWINGCOLLECTORS.ORG

IN THIS ISSUE.....



PAGE 3	NEWS BRIEFS, ABOUT THE COVER
PAGE 4	CLUB NEWS, KIDSVIEW UPDATE
PAGE 5	RED WING STONEWARE ENCYCLOPEDIA HITS THE SHELVES
PAGE 6	SIEG & DAHL'S BARREL HOUSE
PAGE 7	DAHL'S GROCERY
PAGE 8	CHROMOLINE HANDPAINTED
PAGE 10	AT THE POTTERY SHOP WITH DUANE & CINDY SMITH
PAGE 12	MIDWINTER 2010: FIESTA IN FEBRUARY
PAGE 13	MIDWINTER REGISTRATION FORM
PAGE 14	CLASSIFIEDS
PAGE 16	LETTERS TO THE EDITOR

MEMBERSHIP

A primary membership in the Red Wing Collectors Society is \$25 annually and an associate membership is \$10.

There must be at least one primary member per household in order to have associate membership. Members can pay for more than one year when renewing their membership. Contact the RWCS Business Office for additional details.

NEWSLETTER EDITOR

RWCS MEMBER RICK NATYNSKI

PO Box 198

PEWAUKEE, WI 53072

NEWSLETTER@REDWINGCOLLECTORS.ORG • 414-416-WING (9464)

The Red Wing Collectors Society, Inc. Newsletter is published bi-monthly by the Red Wing Collectors Society, Inc. Suite 300 • 2000 West Main Street Red Wing, MN 55066.

Phone: 651-388-4004 Fax: 651-388-4042

WWW.REDWINGCOLLECTORS.ORG

Postmaster: Send address change to: Red Wing Collectors Society, Inc. Newsletter
PO Box 50 • Red Wing, MN 55066. USPS 015-791; ISSN 1096-1259.

Copyright © 2009 by the Red Wing Collectors Society, Inc. All rights reserved.

The Red Wing Collectors Society, Inc. does not guarantee the accuracy of articles submitted by individual members.

NEWS BRIEFS

CALL FOR NOMINATIONS: SEVEN RWCS BOARD POSITIONS UP FOR RE-ELECTION IN 2010

“Now is the time for all good RWCS members to come to the aid of their Society!” NOK, maybe not “all” good members, but your Society is definitely in need of a few good members to serve on its Board of Directors. The four year terms of all current RWCS Board members (President, Vice President, Treasurer, Secretary, Historian and Representatives at Large) end as of the 2010 Convention. The RWCS Nominating Committee is seeking members to be candidates for nomination for these Board positions for the upcoming election. We have a particular need for candidates for the Secretary position, but interest in any of the Board positions is welcome.

Board meetings are now held just during MidWinter and the July Convention, with an occasional conference call if needed, so extra travel isn't required. The job descriptions for all Board positions are posted on the RWCS website, and can give you an idea of what is involved with being a Board member. In addition, if you have any questions about what any of the positions entail, any Board member would be happy to talk to you about Board service, or you can contact me directly. All of our contact information is available on Page 2 of the newsletter.

Please consider serving your Society as a Board member and playing a vital role in the future of the Red Wing Collectors Society. The need is great and the rewards are many.

– Jolene McKoon, RWCS Vice President

RWCS BOARD TO DISCUSS BUDGET ON NOV. 8

The RWCS Board of Directors will meet via conference call on the evening of Sunday, Nov. 8 to review and finalize the RWCS annual budget.

CONVENTION BANNER DEADLINE EXTENDED

The deadline to order new Convention banners that will be printed during the first bulk-print run has been extended until MidWinter.

As discussed in the last newsletter, most of the banners displayed in downtown Red Wing during Convention Week have seen better days. Many are more than 10 years old and in poor condition, so they're in need of replacement. Therefore, the current banners were hung for the last time in 2009 and a new design will be implemented for the 2010 Convention. Old banners will be available for pick-up at the MidWinter GetTogether or Convention in 2010.

Whether you're a current banner sponsor or you'd like to sponsor a banner for the first time, you can order the new style in the Society's bulk-print run for \$90 for a single side or \$180 for both sides. Prices include layout and design work up to ½ hour. Thanks to improvements in printing technology, these new banners will cost less than the old ones and also be of better quality. Photos can even be incorporated into the designs of new banners. The banners will cost more if not ordered in bulk, so call Stacy or Katie at the RWCS Business Office to place your order soon.



ABOUT THE COVER

“Chromoline is pretty ‘Jetsonesque’ stuff.”

– Steve & Rose Splittgerber, RWCS website art pottery experts

It's a rocket ship! It's a flying saucer! No – it's Chromoline, and it's fantastic!

Introduced in 1960 and manufactured for only a short period of time, Red Wing's colorful Chromoline series is one of those lines that looks like it could be found in an interior design catalog that was printed only last week. The modern shapes, sweeping lines and rich colors give it an enduring look that even a hardcore stoneware collector could learn to love. I feel comfortable saying that, because I now have several pieces of Chromoline in my collection, even though stoneware has always been my primary interest.

If the pieces on the cover have captured your attention, turn to pages 8 and 9 for Ron Linde's story about this impressive line of art pottery.

This issue also features the Dahl family's history with Red Wing advertising. Not only does RWCS Member Cindy (Dahl) Smith share information about her family's past, but she and her husband, Duane, invite us in to see their extensive dinnerware collection.

– Rick Natynski, RWCS Newsletter editor

Give the gift of RWCS Membership this holiday season!

Do you have a friend or family member who you think is destined to become a Red Wing collector, but just needs a little push? For only \$25, you can give the gift that keeps on giving...a one-year membership to the Red Wing Collectors Society! We can mail the “new member” packet directly to the recipient, or send it to you so you can wrap it up.

For the fastest service, save yourself a stamp and save the RWCS Business Office some time by purchasing the gift of membership securely online with a credit card at WWW.REDWINGCOLLECTORS.ORG or call the office at 800-977-7927. You can also renew your own membership online hassle-free!

Remember, for every new primary RWCS member that you recruit or sign up between now and July 1, 2010, your name will be entered into a drawing to win free membership for one year and registration to either the 2010 MidWinter GetTogether or the July Convention. Any member that recruits five or more new primary members will automatically have their membership renewed for free for one year! Plus, the chapter with the most new primary members joining the Society will have bragging rights to the traveling Little Brown Jug of Membership. To learn more about how the program works, visit the RWCS website or call the business office.





**STACY
WEGNER**

*Executive
Director*

Thank you to all the RWCS members who responded to the 2009 Convention Survey. Of those that received the survey via e-mail, we had a response rate of about 26 percent. We learned that most respondents attend each year, purchase a Commemorative, participate in events, volunteer and plan to return in 2010. We also confirmed that everyone had a positive registration experience. Here are some highlights:

- First-time attendees suggested creating a first timer's packet and putting a map of Red Wing High School near the registration area.
- Respondents recommended the slide shows be more informative at the Welcome Session and Business Meeting.
- The majority of respondents attended the Thursday Night Auction, liked the length and were aware of the new submission process.
- Commemorative: all respondents purchased and liked the quality of the piece that was created.
- Most respondents attended at least two education sessions and liked having more new sessions this year. We received more than 30 suggestions for new topics.
- The majority of respondents attended the Show & Sale. They were not sellers and they were able to find information on the event.
- Most respondents did not attend the Friday Night Picnic, but those who attended liked Central Park as the new site for the event.
- Banquet attendees enjoyed the casual atmosphere of the banquet, but would like to have a speaker/program.

We appreciate everyone who took the time to respond to the survey. These highlights along with all the comments and suggestions will be taken into consideration as we plan for the 2010 Convention. Any member who would like to help plan, organize or set up any Convention events is encouraged to contact the business office. If you would like a copy of the full survey, please contact the office. It will be automatically e-mailed to the RWCS Board of Directors and chapter presidents.

Thank you and kudos to the Rocky Mountain Chapter, which made a \$200 donation to KidsView. Lois Jacobsen, president of the Rocky Mountain Chapter, recently notified Wendy Callicoat and me of their chapter's support of the educational program. We continue to be overwhelmed by support from the chapters and membership, which allows us to continue our mission with the KidsView seminars.

As a side note, we asked members in an earlier article to look for Red Wing Hotel or Restaurant China for the children to paint on. We've since received a number of questions about what it looked like, so we thought it would help if we were a bit more specific. Basically we are looking for any type of Red Wing dinnerware that doesn't already have a pattern or decoration painted on it.

The most plentiful is found in the tan fleck, like the plate pictured below. After the Potteries strike, the remaining blanks of dinnerware were all glazed in this tan-fleck regardless of the shape. The piece pictured is from the Cylinder Line (Pepe, Flight, Pompeii, etc.). Good luck with your remaining months of hunting for different shapes in this glaze. You never know, there may be a special prize for whoever brings in the biggest variety of shapes for KidsView participants to decorate!

– Sue Jones Tagliapietra, RWCS President



RED WING COLLECTORS SOCIETY FOUNDATION

**Board meeting followed by the annual
meeting and election of officers**

(Open to all RWCS members and any interested parties)

8 a.m. Saturday, Nov. 7, 2009

**Community Development Building Meeting Room
419 Bush Street, Red Wing, Mn**



LONG-AWAITED RED WING STONEWARE ENCYCLOPEDIA HITS THE SHELVES

Story by Rick Natynski, RWCS Newsletter Editor

It's official – stoneware collectors now have another reference book to add to their libraries. Released at the end of September, the *Red Wing Stoneware Encyclopedia* is the first book with new content from Red Wing aficionados Dan DePasquale and Larry Peterson since releasing the *Red Wing Stoneware* and *Red Wing Collectibles* value guides in 1983 and 1985, respectively.

Although they were written more than 20 years ago, the aforementioned books have long been two of the only value guides on the market. While Dan and Larry have worked with co-author Gail Peck to revise prices and release updated editions every few years, they have been itching to create a new book for the past 15 years.

“With all of the new pieces that have come up since doing the first book, we felt collectors needed a more complete book and identification guide,” Larry explains. “Plus, there’s a growing group of collectors who still haven’t joined RWCS, so it’s directed at bringing them in.”

Finishing the project was made possible when the two retired from their full-time careers. Dan retired as associate superintendent of the Norfolk, Neb. Public Schools in 2008 and Peterson retired from his position as a regional manager with

Edina Realty at the beginning of 2009.

The 224-page hardcover book is in an 8½- by 11-inch format, allowing for more than 800 color photos to fit in the publication. It includes chapters on crocks, jugs, churns, water coolers, kitchenware like pitchers and bowls, miniatures, specialties, animals and double-stamped pieces.

Larry visited collections throughout the Midwest and as far as Colorado and Arizona to photograph rare and unusual pieces for the book. Dan did most of the writing, which includes several pages of history about the Potteries and stoneware production, a glossary of terms that’s helpful for new collectors, information from the *Potteries Ledger* and a “Did You Know?” section that lists fun facts. The book also includes values, which fellow collectors and auctioneers were consulted for assistance in determining.

“I’m in awe of the number of pieces in the book that we had never seen before,” Dan says. “We couldn’t have done this without the help and support of people who let us into their homes, so we thank them for sharing their passion for Red Wing with fellow collectors, and we hope people enjoy the book.” ■

See the advertisement on page 15 to order a copy of the book.

ABOUT DAN

Dan’s interest in Red Wing started when he graduated from college and purchased a 5 gallon Red Wing shoulder jug for only 50 cents. Attending auctions, Dan began collecting all kinds of kitchen stoneware. *Clay Giants*, by the late Rev. Lyndon Viel, a minister from Wauwatosa, Wis., introduced him to the variety and scope of Red Wing stoneware items. A RWCS charter member and past president of the organization, he has presented many educational seminars at the annual Convention and written numerous articles for the *RWCS Newsletter*. He’s also a member of the RWCS Hall of Fame.



Dan DePasquale

ABOUT LARRY

Larry’s first run-in with Red Wing occurred about 40 years ago, when he and his wife were on vacation in Rochester, Minn. An antique shop visit revealed a basement full of stoneware, which his wife wasn’t excited about. But a compromise was made, and Larry brought a carload home.

“Crocks were in the trunk, the back seat and my wife even had to hold one on her lap,” he chuckles. “I figured it would only be matter of time until she fell in love with Red Wing, but she’s held out longer than I thought she would.”

Larry is a RWCS charter member and past education manager, RWCS Foundation treasurer, RWCS Hall-of-Famer and owner of Larry’s Jugs.



Larry Peterson



SIEG & DAHL'S BARREL HOUSE

Story by *Rick Natynski*

Although 1886 was the year that Cola-Cola was invented, it was also the first year that beverages of a fermented nature would be served at 221 Main St. in Red Wing. That's when Minnesota's oldest tavern - Sieg & Dahl's Barrel House - was born.



This incredible serving tray measures 16 inches tall and 13 inches wide and is likely a one-of-a-kind piece.

Of all the liquor retailers and wholesalers in the city of Red Wing in the late 1800s and early 1900s, only Sieg & Dahl, Ladner Brothers, the Red Wing Liquor Co. and L.J. Seifert are known to have placed bulk orders for advertising jugs from Red Wing (the Ladner jugs have two different advertising stamps). Another advertising jug exists for "Sunny Brook Whiskey Compliments of Frank A. Carlson, Red Wing, Minn." This jug, however, was made by Pennsylvania's Sherwood Brothers Pottery. Of these businesses, the jugs from Sieg & Dahl are by far the hardest to come across.

Jacob Sieg was born to German immigrants in 1859 in Spades, Indiana, and moved to Red Wing in 1881. Knute Dahl was born in Norway in 1853 and moved to the area 30 years later.

Back then, the Barrel House occupied the addresses of 219 and 221 Main Street, using one address for their wholesale business and the other for their watering hole. The following newspaper ad from the early 20th century titled "When Thanksgiving Comes" made it clear that the men were focused on quality:

"That day, of all days in the year, your supply of wines and liquors should comprise only the very best brands. You will never go far wrong if your Thanksgiving sideboard and table are supplied by Sieg

It's hard to find a ½ gallon or 1 gallon Sieg & Dahl jug, but a quart? Thanks to RWCS Members Dave & Diane Hallstrom for sharing this photo.

The circa 1900 photo at right shows why Jacob Sieg (at right) and Knute Dahl (at left, behind bar) thought the Barrel House would be a suitable name for their tavern. Note the Red Wing spittoons on the floor next to the bar.



& Dahl. The finest vintages, the best distilleries, are represented in their stock. Here are a few of the many items: Clarets, Sauternes, Burgundies, Port and Sherry in Wines; Finest Whiskies and Cognacs and Liqueurs of exceptional quality and value."

One newspaper account says the "saloon wasn't just your typical sit-on-a-stool-bar." Between 1886 and 1888, the Barrel House was a stop-and-go where patrons would come in and "fill their Red Wing crock with beer that they could take home and enjoy."

The prosperous mills in Red Wing at the turn of the century made for lucrative times at the Barrel House, as well. A separate room was added at this time that was to be used as a "sitting place" for women.

Sieg's untimely demise came on July 5, 1903, when he and some friends were fishing the Mississippi about 6 miles north of Red Wing. His row boat capsized when he stood up to increase his leverage over a fish, and he drowned trying to swim back to shore. He was only 43 years old.

According to John Dahl, Knute's grandson, the Sieg and Dahl partnership lasted until about 1915, when Sieg's widow, Louisa, wanted out. At that point, Dahl sold the business so he could provide her with her half of the investment. Considering Sieg & Dahl was around for nearly 30 years, one would think Sieg & Dahl advertising jugs would be more readily available. But that's not the case.

Knute Dahl died of a stomach illness later that year, but as the story on the next page discusses, the Dahl name would find itself on another piece of Red Wing stoneware about 30 years later.

The Red Wing Liquor Co. was the next occupant at 219-221 Main St., which also had advertising jugs made by Red Wing. Those are much easier to find today. Surviving Prohibition, it is rumored that John Kempe, the owner of the Barrel House in 1924, "quietly" served alcohol.

After several changings of hands, at least one major fire and nearly 125 years, the Barrel House is still in operation today. Next time you're in town, take the opportunity to pull up to the bar to enjoy a beer or even that Coca-Cola, check out the vintage photo of founders Jacob and Knute, and revel in the history of Minnesota's oldest drinking establishment. ■



Photo and tray courtesy of Duane & Cindy Smith

Dahl's Grocery

Story by
Rick Natynski

John Melvin Dahl, the youngest of Knute Dahl's five sons, owned Dahl's Grocery at the corner of 6th and Plum streets from 1931 to at least 1948. During that time, he gave away "Dahl's" Red Wing spongebanded pitchers to his patrons.

The Dahl brothers were all about running their own businesses. For many years John was associated with Dahl Brothers taxi service, which was run by Edward, Carl and Herman Dahl. The fifth brother, Oscar, had a company named Befort & Dahl. Records indicate that John was the only owner of Dahl's Grocery, but many family members worked there, including Carl's son, Burnette, who was a delivery boy before attending law school, and Oscar's son Tabor, who was a meat cutter before becoming an electrician.

Dahl's Grocery marketed itself as a place of quality, convenience and value. The store's Easter holiday ad in the *Red Wing Daily Republican* in 1942 boasted sale prices of 19 cents for a 31 oz. can of sweet potatoes, two 16 oz. cans of fruit cocktail for 33 cents and a quart of salad dressing for 37 cents.

"Make this the grandest Easter Feast you've ever had!" the ad reads. "Carefully plan your menu and then save both time and money by coming to Dahl's Grocery. You'll find everything you need under one roof, in a clean modern store and at money saving prices."

The ad also promoted the store's delivery service. With a shopping time of 5 minutes by phone and two deliveries daily, Dahl Grocery positioned itself as a convenient food store for Red Wing's residents.

In addition to his many years in business, John Dahl was active in his church, was a member of the local Elks chapter and was a volunteer fireman. When he passed away in 1953, it's fitting that the obituary in the *Red Wing Daily Republican* described him just as the same newspaper described his father 38 years earlier – "one of Red Wing's well known residents". ■

"Your total is \$8.75." This 1948 receipt from Dahl's Grocery included three cases of root beer, two cases of lemonade and a box of cigars.

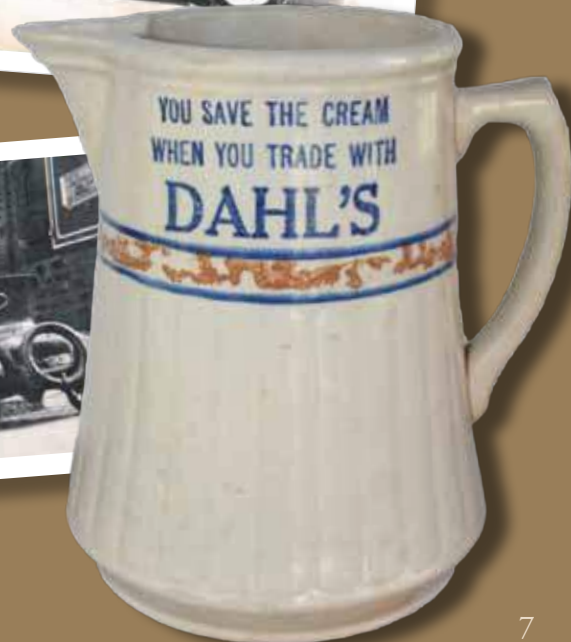
A wide selection of sweets: John Dahl, the youngest of the five Dahl brothers, poses in front of his grocery store's candy case. Packages of Life Savers mints can be seen next to his hand, and Campbell's Soup cans are in the background on the shelf.

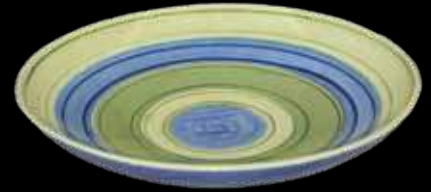
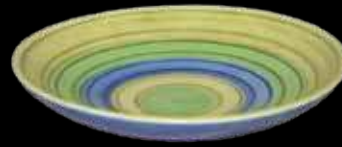
Speedy delivery! The Dahl's Grocery delivery truck in the photo directly above the pitcher was purchased in 1937.

Need a ride? The Dahl Brothers operated a taxi service in Red Wing for many years.



Photos courtesy of
Duane & Cindy Smith





672

671

686

687

Chromoline Handpainted

TOP ROW, left to right

678—6" candleholders, 5.00 pair

680—bowl, 8" across, 3.50

681—bowl, 10" across, 5.00

676—compote, 10" across, 6.00

675—compote, 8" across, 4.50

684—ash tray, 10", 5.00

685—ash tray, 8", 3.50

Above: This is exactly how the black and white Chromoline pages appeared in the *Red Wing Art Pottery Catalog, Fall*

Story by Ron Linde, RWCS Member

Red Wing designer Charles Murphy worked during the Eames Era of Modern Design, often described as the post-World War II period from around 1948 to 1964. Artists of the time often portrayed a modern vision of the future in sweeping lines and shapes with bold, distinctive styling. This era was named for husband and wife furniture designers Charles and Ray Eames, who believed well-designed goods should be available to all. Stylings of the Eames Era were apparent in period architecture, automobiles, lighting, household appliances, and yes, pottery. Murphy's Chromoline Handpainted is one such example.

Murphy usually used one glaze color to cover his art pottery designs, but not so with this line. These labor-intensive pieces were

decorated with circular bands of various glaze colors. Murphy's distinctive line first appeared in the *Red Wing Art Pottery Catalog, Fall 1960*. All 15 shapes from the Chromoline Handpainted line also appeared in the Red Wing art pottery catalogs in the spring and fall of 1961.

Almost all pieces of Red Wing art pottery are marked on the bottom with a shape number. Chromoline is no exception. Shapes 671-687 included covered candy dishes, vases, compotes, candlesticks and ash trays. In addition to these items, a tall, 16-inch bottle vase (M3006 or 3006) provided a great surface for the circular bands.

Shapes not included in this sequence of decorated Chromoline items are shape numbers 677, 679 and 683. Shape 677 is a longstanding flower pot shape, shape 679 is a tall vase and shape 683 is currently not known.



676



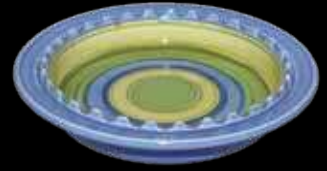
675



684



685



3006



682



674



673

BOTTOM ROW, left to right

672—candy dish, 5½” high, 6.00

671—candy dish, 7” high, 5.00

686—12” vase, 6.00

687—15” vase, 8.00

3006—16” vase, 7.00

682—13” vase, 5.00

674—10” footed vase, 5.00

673—8” footed vase, 3.50

Available in the follow colors only:

502—Rust and Green combination

503—Blue and Yellow combination

1960. However, that didn't do it justice so we recreated it in color. Back then the 15 pieces could be purchased for a combined \$78.⁰⁰, but today you're lucky to find one piece at that price.



The Schleich Red Wing Museum in Lincoln, Neb. displays one unusual Chromoline item in the blue and yellow glaze (at left). Likely a trial piece, it's shaped like the 687 vase, but at just a shade over 18 inches, it's more than 3 inches taller and has no shape number.

The smooth surfaces used on this line were glazed with vivid colors. The Red Wing art pottery catalogs listed the Chromoline Handpainted shapes as available in the following colors only: 502 rust & green, 503 blue & yellow. The Schleich Museum also has an experimental 3006 vase in gray, pink and rust glazes (at far left).

During an interview before his death in 1994, Murphy described the line: “Before firing, the pieces were spun on a wheel, and as they were spun, the decorator would hold

a brush laden with glaze to create a ring on these pieces. This process was repeated many times.”

The time required for producing each piece and the increasing competition from foreign competition likely contributed to limited Chromoline production. After only one year of production, the line is not shown in any other Red Wing catalogs, although Chromoline shapes (with the exception of the ash trays and bowls) were done in solid glaze colors and placed in the Stereoline grouping for one listing in the *Red Wing Art Pottery Catalog, Spring 1962*. One piece from this limited production is shown at right in the 682 shape.

With his use of bold circles of color on modernist shapes, designer Charles Murphy's impressive Chromoline Handpainted line embodied the designs and stylings of the Eames Era. ■

Schleich Museum photos courtesy of curators Steve and Rose Splitzgerber.



At the Pottery Shop

with Duane and Cindy Smith

Story by
Rick Natynski

When Duane and Cindy Smith moved back to Cindy's native Rosemount, Minn. from Indiana in 1998, they did it to be closer to family and friends – not Red Wing. Back then Duane had only three pieces of Red Wing dinnerware in the Lanterns pattern and had no intentions of adding more. But all collectors can pinpoint something that sparked their interest in collecting. For the Smiths it was helping Cindy's mother fill some holes in her set of Lotus dinnerware, which she used for special occasions.

Before long Duane and Cindy had accrued about 200 pieces of Lotus of their own. Then they joined the Red Wing Collectors Society and began to branch out into other Red Wing dinnerware patterns, liking the colorful nature and the fact that it didn't take up as much space as stoneware. More than 1,000 pieces later, Duane now has his own man cave in the backyard – a "Pottery Shop" filled with Red Wing dinnerware.

"Back in 1998, could I have ever dreamed that I'd have something like this? No way," Duane grins, looking around at his collection. "And even though the pieces are small, it turns out that I still had to get a shed to store it all."

Duane had the shed built in 2001 with the specific purpose of displaying their expansive collection, which includes 50 coffee cups from the Concord Line, supper trays in 20 different shapes and sizes, a nice selection of pieces in the Tampico and Lantern patterns and few pieces in Duane's favorite pattern – Country Gardens.

Another of the Smiths' interests is Lotus, Magnolia and Blossom Time dinnerware vases. With eight shapes for each pattern, they knew they had a challenge ahead to find all 24 different vases. It took 3 or



Frightening? Since buying these three Harlequin Clown pieces from the Luther Auction after Convention in July, the Smiths have already acquired a fourth piece. The line was introduced in 1958, but was discontinued shortly thereafter because it reportedly scared children.

4 years, but it was worth the effort. The Smiths showed them at this year's Convention Display Room where they took the People's Choice Award in the Dinnerware category.

Some of the Smiths' favorite pieces, however, are the one-of-a-kind Lunch Hour items and short-production pieces that they have acquired. The pinnacle of their dinnerware collection is the relish tray in the elusive Buds pattern that is pictured in *Red Wing Dinnerware* by Stan Bougie and David Newkirk. The Buds pattern was to be released in 1952, but negative feedback at a trade show caused the Potteries to ditch it. Only a limited number of pieces were made as samples and only a few are known to exist today.

Duane and Cindy also have a hard-to-find Red Wing hobnail ashtray made for the Red Owl grocery chain, a lunch hour dish with a kitten that says "Randy Alan" in an unrolled ball of twine, and a sample dinner plate made for the Thunderbird Hotel & Convention Center in Bloomington, Minn. Another oddity they own is a Concord-shaped dinner plate with the Capistrano pattern bottom-marked with an "S" that most-likely stood for "sample". The Capistrano pattern was produced under the Anniversary Line, so the fact that it's on a plate from the Concord Line makes it a rare find indeed.

More of the Smiths' favorites include items from the 3-piece Harlequin Clown Baby Set, all five of the Mursen clocks marketed by George Jurgesen and Charles Murphy, and a few pieces painted by Hilda Lothner Sell.

While dinnerware is their passion, the couple dipped into stoneware because of Cindy's maiden name – Dahl. Her great-grandfather, Knute Dahl, was part owner in Sieg & Dahl's Barrel House from



The Pottery Shop: Duane had a shed custom built in 2001 to house their growing Red Wing collection.



Duane shows a mug the Potteries made for the Thunderbird Hotel & Convention Center in Bloomington, Minn.

1886-1915, and her grandfather, John Dahl, ran Dahl Grocery from 1931 to 1948 (see stories on pgs. 6 & 7).

The Smiths' first run-in with a Sieg & Dahl jug was when visiting Cindy's uncle, who lives in Red Wing.

"When he showed us his 1 gallon blue-banded Sieg & Dahl advertising jug, our eyes nearly popped out of our heads," Duane recalls. "The next thing we knew, he was pulling out a spongeband pitcher with

Dahl's Grocery advertising. That's when I knew the quest was on to find some Dahl advertising of our own."

These pieces are hard-to-find, of course, so Duane was caught by surprise only a couple months later when he saw an ad for a Dahl's spongeband pitcher to be sold at a Seeck Auction in Mason City, Iowa.

Of course, when it rains, it pours. A fellow collector called him only a few days before the sale to tell him that a ½ gallon Sieg & Dahl jug was coming up at an auction in Cannon Falls that Saturday – the morning after the pitcher was to be auctioned in Iowa. Duane made the 230-mile round trip to Mason City that Friday to get the jug, and he and Cindy got up early the next morning to go after the jug. Despite some feverish bidding, they were successful on both accounts; in less than 24 hours they had added both pieces to their collection. The jug even surpasses the Buds relish tray as their favorite piece.

Despite already having a large collection, the Smiths know it will never be complete thanks to the magnitude of the pieces the Potteries turned out and their unquenched thirst for rare and unusual items. Some of the pieces they're hunting for at the present time include egg plates from the Concord Line, Minnesota Twins ashtrays, Chromoline art pottery and more stoneware bearing the Dahl name.

Equally as important as all of the great pieces they've accumulated over the years are the friendships made and memories shared with fellow collectors, the Smiths say. They most enjoy attending Convention and the MidWinter GetTogether because it gives them the chance to catch up with friends.

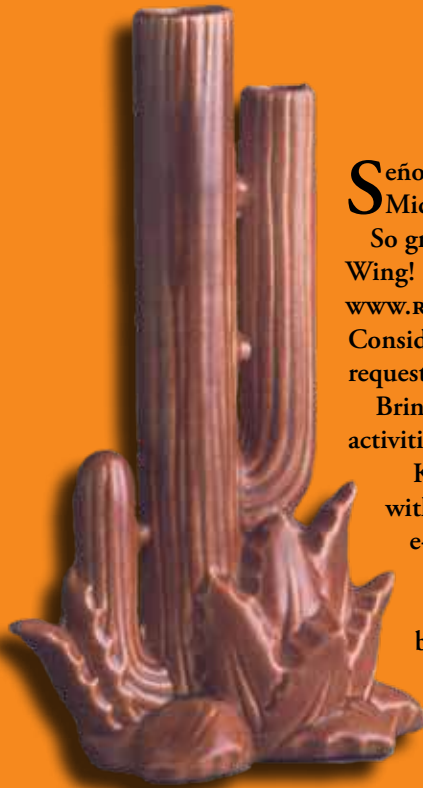
"We've met a lot of nice people in the 10-plus years we've been collecting," Duane concludes. "Other collectors are easy to talk to because of the interests we share. It's like we're all in it together." ■



Above: Cindy & Duane pose with a portion of their large dinnerware collection.

At left from top to bottom, left to right: The Smiths' coveted Buds relish tray, a sample dinner plate made for the Thunderbird Convention Center, a Concord blank with the Capistrano pattern, a lunch hour dish with "Randy Alan" and a kitten, and a Red Owl hobnail ashtray.

MidWinter 2010: Fiesta in February!



Señors and señoritas of the Red Wing Collectors Society – it's time to get ready for “Fiesta in February” MidWinter GetTogether 2010, February 12-14 at the Holiday Inn and Suites in Des Moines, Iowa.

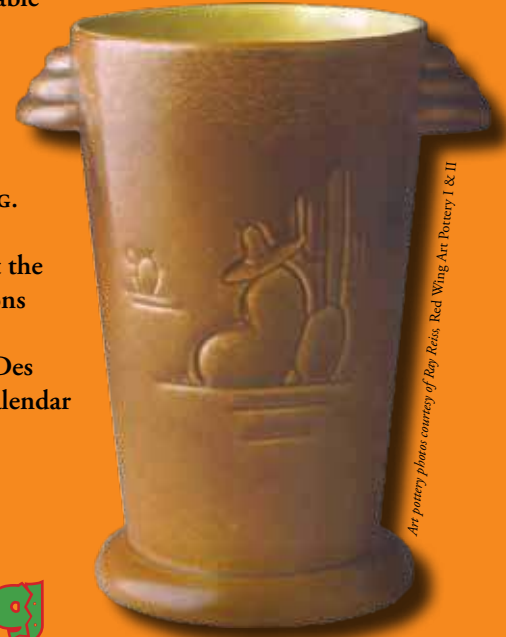
So grab your sombreros and bring your margarita glasses because we are going to fiesta our love of Red Wing! Registration for MidWinter is already open – save yourself the stamp and register online at WWW.REDWINGCOLLECTORS.ORG or call 800-977-7927. Need more dinero to support your habit? Consider having a table at the Show & Sale for only \$35. Table requests need to be in by Jan. 8, 2010.

Bring the niños, too, because registration for KidsView activities is new this year and free of charge.

Katie Hardyman is looking for volunteers to help with registration and Friday night setup. If interested, e-mail her at MEMBERSHIP@REDWINGCOLLECTORS.ORG.

In addition, we're looking for someone to emcee the Fiesta reception and we're asking members to contact the business office if they have Mexican-themed decorations that they can donate.

MidWinter is sure to be a HOT HOT time in Des Moines! Don't take a siesta this year; mark your calendar and come Fiesta in February!



Art pottery photos courtesy of Ray Keiss, Red Wing, Art Pottery I & II

Schedule

Deadline for pre-registration: January 15
Sellers Table request deadline: Jan. 8, returned by Jan. 25
Theme: Fiesta in February

Friday, February 12

Board of Directors Mtg.	8 a.m. - 3 p.m.	
Registration	1-8 p.m.	
Lobby		
Room Sales	All day	
“Fiesta” Reception	7-9 p.m.	Ballroom

Saturday, February 13

Registration	7-10 a.m.	Lobby
Continental Breakfast	7-8:30 a.m.	Ballroom
Welcome/General Session	8:30-9:30 a.m.	Ballroom
Education Seminars Session 1	9:40-10:30 a.m.	Room TBD
Education Seminars Session 2	10:40-11:30 a.m.	Room TBD
Show & Sale	1-4 p.m.	Ballroom
Auction	6 p.m.	Ballroom

Sunday, February 8

Continental Breakfast	7-9 a.m.	Room TBD
-----------------------	----------	----------

Lodging

Location: Holiday Inn Hotel & Suites, 4800 Merle Hay Road, Des Moines, IA 50322. Phone: 515-278-4755

For reservations: Call 515-278-4755 and indicate you are a RWCS MidWinter attendee and/or a room seller.

Deadline: January 13, 2010 for the room block (up to 4 guests per room). Floors 1-4 are designated non-smoking and floor 5 is smoking.

Types of Rooms:

Standard: 2 queen beds or 1 king bed at \$68 per night + 12% tax

Junior Suite: king bed and sleeper sofa at \$98 per night + 12% tax (About 1½ rooms with large bedroom and small living room)

Extended Stay Suite: king and sleeper sofa at \$98 per night + 12% tax (About 1½ rooms with small bedroom and large living room)

Family or Parlor Suite: king and sleeper sofa at \$146 + 12% tax (The size of two rooms with a big dining room table and kitchen area)

Whirlpool Suite: \$166 + 12% tax





Pre-Registration MIDWINTER GET TOGETHER

Feb. 12-14, 2010
Holiday Inn & Suites
Des Moines, IA

Submitting Member Information...

Member Number: _____

Name: _____
Last Name First Name

CHECK HERE IF YOUR ADDRESS HAS CHANGED.

Address: _____

Phone: _____ **Email:** _____

Deadlines:
Registration Form
January 15, 2010
Sellers Table Request
January 8, 2010

Member Registration 1:

Number Last Name First Name

Registration: Adult: \$25 Child: FREE _____

Membership Renewal:

Primary \$25 (1 yr) \$50 (2 yr) _____
Associate \$10 (1 yr) \$20 (2 yr) _____

Total Reg 1 _____

Member Registration 2:

Number Last Name First Name

Registration: Adult: \$25 Child: FREE _____

KidsView Registration **DOB** _____

Membership Renewal: **Primary** \$25 (1 yr) \$50 (2 yr) _____
Associate \$10 (1 yr) \$20 (2 yr) _____

Total Reg 2 _____

Member Registration 3:

Number Last Name First Name

Registration: Adult: \$25 Child: FREE _____

KidsView Registration **DOB** _____

Membership Renewal: **Primary** \$25 (1 yr) \$50 (2 yr) _____
Associate \$10 (1 yr) \$20 (2 yr) _____

Total Reg 3 _____

Grand Total _____

SELLER'S TABLE: Please send me a Seller's Contract for Saturday's sale. (\$35/table)
 Antiques (90% Antiques) **Souvenirs** (90% souvenirs)

Due to limited space, all tables are sold on a first-come, first-served basis. You must enclose a self-addressed stamped envelope to get your contract by mail. You can also download the form from our website or email the office. **Signed Contracts and sales tax permit must be postmarked by January 22, 2010.**

Easy Ways **4** to Register

- Online:**
www.RedWingCollectors.org
- Phone:** 800-977-7927
- Mail:** P.O. Box 50
Red Wing, MN 55066
- Fax:** 651-388-4042

Method of Payment:

MC VISA Discover CHECK (enclosed payable to RWCS)

Name: _____

Card Number: _____

Last 3 digits on back: _____ **Expiration Date:** _____

Signature: _____

**Questions? Call or email us at 1-800-977-7927 or
membership@redwingcollectors.org**

Classified ads are 20¢ per word; \$4 minimum charge and are accepted on a first-come, first-served basis. In addition to appearing in the newsletter, classifieds and display ads are posted on the RWCS website.

Ads are divided into the following sections: Red Wing For Sale, Red Wing Wanted, Other Pottery For Sale, Other Pottery Wanted, Events, Auctions, Clubs & Publications and Websites, Announcements and Services. You will not be charged for these words, but please indicate which section your ad should be placed in. If ad is to run in more than one issue, please indicate at time of placement. (Note: the small number at the end of an ad tells when the ad expires, e.g., 12/09. Ads without dates are one-time ads.) Please type or print clearly and proofread before submission.

DISPLAY ADS

Display Ad Size	1x	6x
Full page	\$425	385
1/2 page (<i>horizontal or vertical</i>)	225	205
1/4 page	125	115
1/8 page	85	70

Display Ad Dimensions

Full Page	7 1/2 x 10
1/2 page (<i>horizontal or vertical</i>)	7 1/2 x 4 7/8
1/4 page	3 5/8 x 4 7/8
1/8 page	3 5/8 x 2 1/4

Display ads are accepted on a first-come, first-served basis. The publisher reserves the right to refuse ads for any reason.

Ads must be supplied electronically as an EPS or PDF file for PC. If you are unsure about acceptability, inquire with the editor. There is an additional 10 percent fee for design and makeup if needed.

DEADLINES

Issue	Ads	Editorial	Mail Date
February	Jan. 10	Jan. 1	Feb. 15
April	March 10	March 1	April 15
June	May 10	May 1	June 15
August	July 25	July 15	Aug. 31
October	Sept. 10	Sept. 1	Oct. 15
December	Nov. 10	Nov. 1	Dec. 15

EDITOR ADDRESS

Make checks payable to RWCS and mail with ads to:

NOTE: New Address Rick Natynski
as of Feb. 2009 PO Box 198
Pewaukee, WI 53072

Or e-mail ads to NEWSLETTER@REDWINGCOLLECTORS.ORG with checks sent separately. Or, call Rick at 414-416-WING (9464).

RED WING FOR SALE

Handles and wooden lids. Send SASE for flyer to Larsen's Collectibles, 757 120th Street, Hampton, Iowa 50441-7555. Phone 641-866-6733. 8/10

Are you looking for an unusual piece of art pottery or a particular 2 gallon churn? Leave a message at 952-922-9169 for Ron Linde. 12/09

Lots of stoneware for sale, from very rare to common. We're the Carter's, stoneware collectors for 27 years, and now we are downsizing. Salt glaze and zinc: crocks, jugs, churns, ice and water coolers, beater jars, bowls, all types of advertising and full set of Commemoratives. Way too many pieces to list. We also have lots of Old Sleepy Eye items. Please contact us with your want list of items. We probably have it. JJCARTER47@MCHSI.COM - Jimmy & Becky Carter, PO Box 725, Oskaloosa, IA 52577 641-673-4781.

Would like to sell the following pieces to a good home: 948; 756; 438; 259; 529; 260; 1403; 998; 415; 227; 216; 242; M5006; 510 (x2); 1619 (2 sets); 122; M5008; 828; 975; 653; 1115; 863; 732; B1392 (x2); B2317; 946; 1355; B211; 854; 505; 892; 220; 795; 5023; 2313; 1011; H510 & H503; M1976; H511; 1240; 947; 766. Not numbered: Blue Chef Pierre; set of platter, plates, 2 bowls; cream/sugar set in turquoise; Pheasant appetizer set; brown pouring bowl; black planter; gravy boat; oval bowl; 75th Anniversary red wing; tall green vase with black base; Pheasant soup tureen with lid. For pictures and information, please e-mail SAFDRAGONS@AOL.COM. Thank you.

20 gallon Union double-double birch leaf (4 leaves) crock. Oval off-center; 5-inch tight hairline; age crows foot on bottom; otherwise in excellent condition. Best offer over \$1,200. Also 7-inch sponge Cap bowl, hairline \$85. Photos available. Contact CSTOERZI@CHARTER.NET or 715-748-3631 for info.

3 nesting Red Wing refrigerator jars. \$900 OBO (sold as set only). Call 920-639-8115 for more information.

Red Wing salt glaze butterfly 20 gallon crock side stamped "Red Wing Stoneware Company". No chips, cracks, hairlines, repairs or restorations. Dark cobalt butterfly and very clean interior. This is a nice investment piece and displays beautifully - asking \$1,950. Also have a great 3 gallon North Star crock with upturned leaf for \$350. Please contact me at BAILEY.DIANA@ATT.NET or 414-303-2691 for pictures or more information.



OTHER POTTERY FOR SALE

Artists In The Park now has a beautiful display in Red Wing. Stop in at Pottery Place Antiques, 2000 Old W. Main * 2nd Floor * and see some of our new special editions. 6/10

RED WING WANTED

Wanted: Blue sponged panel bowls in 5- and 12-inch sizes. Contact Wayne at 952-443-2518 or PILLROLR@PRO-NS.NET. 8/10

Wanted: Old Racine, Wis. advertising items. Contact HORLICK@WI.RR.COM or 262-554-0488. 12/09

Wanted: Knapp, Wis. advertising. Want to learn of the existence of any advertising pieces even if not for sale. To sell or share information contact Tim at 715-263-2118 or TWYSS@CLEARLAKE.KI2.WI.US. 6/10

Wanted: 4, 5, 6 and 8 gal salt glaze, button top, crock lids with petals in good shape. E-mail Rick at RTKLEMM@COZADTEL.NET or call 308-784-3994. 12/09

Wanted: 2009 Red Wing McDonald's Commemorative Crock (Happy Meals theme) from Red Wing, Minn. Please contact Ann or Tom at ANNS@US.IBM.COM or 507-288-1397.

Wanted: Spongeband pitcher with Wm. Reid, Castlewood, SD advertising or any other Red Wing items from Castlewood, SD or Watertown, SD. Please contact Donna at SCHMIT@ITCTEL.COM or 605-793-2449. 12/09

Wanted: Advertising crocks, jugs & churns from NE, ND, SD, KS & others - especially pieces that have a wing, birchleaves or Elephant Ears with the advertising. Willing to pay top \$ for the right piece. Contact Scott at COBE142@AOL.COM or 402-331-4749.

Wanted: Red Wing Vancouver and Victoria, British Columbia advertising jugs. Please send photos even if not for sale for future newsletter article. Rick at 414-416-9464 or NEWSLETTER@REDWINGCOLLECTORS.ORG.

WEBSITES

Visit WWW.RAREREDWINGCOLLECTABLES.COM - a unique, new approach to buying and selling. Open to marketing your rare Red Wing pieces. Check it out! 12/09

CLUBS AND PUBLICATIONS

Stoneware book (*Antique Trader Stoneware Price Guide*); includes Red Wing; Monmouth-Western; Blue/White; Eastern U.S. 288 pages; colored photos; \$20 postage paid. Gail Peck, 2504 E. 21st, Fremont, NE 68025; 402-721-5721. 12/09

NEW 2009 values for *Red Wing Stoneware* for \$12.95 and 2008 values for *Red Wing Collectibles* for \$9.95 or \$19.95 for both plus \$2/\$2.50 postage, respectively. Gail Peck, 2504 E. 21st, Fremont, NE 68025; 402-721-5721. 12/09

Blue & White Pottery Club - Visit the club's website at WWW.BLUEANDWHITEPOTTERY.ORG for full details.

Collectors of Illinois Pottery & Stoneware - See the club's website at WWW.COIPS.ORG for full details.

McCoy Pottery Collectors Society - For full details, see the club's website at WWW.MCCOYPOTTERYCOLLECTORSOCIETY.ORG.

RECENT FINDS & DEALS

Did you find a rare piece or a great deal worth sharing? Briefly describe the item, where it was sold, date purchased, venue (store, auction, etc.) and price paid. Send on a post card, or e-mail RWCSNEWSLETTER@WI.RR.COM, or enclose in an envelope if you'd like to include a photo for publication. Multiple submissions result in multiple entries in the Newsletter Special Commemorative Lottery at the 2010 Convention. Send to the editor at the address on page 2. All entries received between July 2009 and June of 2010 are eligible whether published or not. Please keep submittals with purchase dates within six months of the newsletter issue.

ITEM	LOCATION	DATE	VENUE	PRICE
Red Wing Flight dinner plate, mint	Roseville, MN	6/09	Thrift store	\$1. ⁹⁹
Pair of Red Wing Orleans/Ardennes candlesticks, flea bites	Eagan, MN	7/09	Thrift store	\$3. ⁹⁸
"Red Wing Welcomes You" mini jug, mint	Kalispell, MT	7/09	Antique shop	\$12. ⁰⁰
3 gallon RW Nebraska adv. crock hairline in bottom	Harvard, IL	8/09	Auction	\$65. ⁰⁰
RW Normandy Creamer (mulberry), mint	Pequot Lakes, MN	8/09	Antique shop	\$2. ⁰⁰
RW 5 lb. Sleepy Eye adv. butter crock, mint	New Ulm, MN	8/09	Auction	\$825. ⁰⁰
Complete RW Tip-Toe dinnerware set	Crystal Falls, MI	9/09	Antique shop	\$200. ⁰⁰
RW #4001 Sgraffito handpainted planter	Willmar, MN	9/09	Thrift store	\$13. ⁰⁰



RED WING STONWARE ENCYCLOPEDIA

By Dan DePasquale and Larry Peterson

**** *Now Available!* ****

- 8½ x 11
- 224 pages
- Great holiday gift
- Many unique pieces pictured for the first time
- Hardcover
- 800 color photos with pricing
- Autographed by both authors

\$29.95 plus S & H totaling \$35.00

Mail check to: Larry Peterson
26425 Galaxie Ave. West
Farmington, MN 55024

Book Signing with Larry Peterson at Country Side Antique Mall
11 a.m. to 5 p.m.; Nov. 21-22, 2009
31752 65th Avenue, Cannon Falls, MN 55009, 507-263-0352
Note: The mall's holiday sale is scheduled for Nov. 20-30.



For dealer pricing, call Larry at 651-463-7070 or Dan at 402-379-4282.

LETTERS TO THE EDITOR

MY 10 GALLON BUTTERFLY CROCK

I read Ken Dirkes' article about this 8 gallon salt glaze butterfly churn in the August RWCS Newsletter. Attached is a picture of my 10 gallon salt glaze crock with the same style butterfly. I purchased this crock many years ago at an auction. It is what I consider mint condition except for an indentation on the back side caused by sitting too close to another piece in the kiln. I enjoy this crock very much!!

– RWCS Member Chuck Hanson



A CONVENTION FIND

One of my favorite finds at Convention this year was a mint lid for my green Stag Water Cooler. I'd been searching for five years, so I was lucky to find it.

The person I bought it from at the parking lot at Pottery Place had been searching for years for the cooler, but finally gave up and decided to sell the lid. I'm now looking for a lid for my blue and white cooler (pictured) which I found in Colorado Springs at a consignment store. Contact me at IM4FORDS@HOTMAIL.COM OR 719-495-7609 if you have one.



– RWCS Member Gary Richardson

TRAILS WEST CHAPTER UPDATE

First we would like to commend RWCS Education Manager Glenn Beall and his daughters – Catherine, Elizabeth and Laura – for assisting our Trails West members, Dick and Nancy Houghton, in the delivery of the Duncan Stoneware Auction held on Sept. 6, in Sioux Falls, SD. It was a superb auction with lots of high quality Red Wing stoneware and pottery. We had nine Trails West members in attendance and thoroughly enjoyed the hospitality of Larry & Kay Salisbury and Marty & Althea Voth. On the Sunday evening after the auction, we convened at the Timber Lodge Steakhouse with the Houghton family where Dick treated us to some delicious Wisconsin fried cheese curds. We were amazed that the Houghtons sold more than 650 items in less than 6½ hours! Unfortunately Marty Voth outbid us on a beautiful mint North Star jug. Oh well, at least it was going back home to Red Wing.

We hosted our chapter's most recent even, our "Fall Flap", on Oct. 17. About 35 chapter members attended and enjoyed food from the world famous Jack Stack BBQ. – RWCS Members Jerry & Kris Mounts

COMING IN THE DECEMBER ISSUE...

EARLY RED WING DINNERWARE



WISCONSIN STONEWARE