



VOL. 33 NO. 4

NEWSLETTER

AUGUST 2008



YES, THAT'S A
6-INCH WING

Page 3

CONVENTION
REVIEW

Pages 4-11

RECOVERING FROM
A TORNADO IN
PARKERSBURG, IA.

Page 12

RWCS CONTACTS

RWCS BUSINESS OFFICE

PO Box 50 • 2000 Old West Main St. • Suite 300
Pottery Place Mall • Red Wing, MN 55066-0050
651-388-4004 or 800-977-7927 • Fax: 651-388-4042
EXECUTIVE DIRECTOR: STACY WEGNER

EXECUTIVEDIRECTOR@REDWINGCOLLECTORS.ORG
ADMINISTRATIVE ASSISTANT: KATIE HARDYMAN
MEMBERSHIP@REDWINGCOLLECTORS.ORG
Web site: WWW.REDWINGCOLLECTORS.ORG

BOARD OF DIRECTORS

PRESIDENT: SUE JONES TAGLIAPIETRA
2219 Lakeland Ave. • Madison, WI 53704-5636
608-241-3072 • PRESIDENT@REDWINGCOLLECTORS.ORG

VICE PRESIDENT: JOLENE McKOON
3124 4th St., Unit 8 • Moline, IL 61265
309-797-3894 • VICEPRESIDENT@REDWINGCOLLECTORS.ORG

SECRETARY: PAULETTE FLOYD
208 E. Somonauk • Yorkville, IL 60560
630-553-9234 • SECRETARY@REDWINGCOLLECTORS.ORG

TREASURER: MARK COLLINS
7312 Lake St. • Omaha, NE 68134
605-351-1700 • TREASURER@REDWINGCOLLECTORS.ORG

HISTORIAN: STEVE BROWN
1816 Sakenda Rd. • Buffalo, MN 55313
763-684-2400 • HISTORIAN@REDWINGCOLLECTORS.ORG

REPRESENTATIVE AT LARGE: RUSSA ROBINSON
1970 Bowman Rd. • Stockton, CA 95206
209-463-5179 • REPATLARGEWEST@REDWINGCOLLECTORS.ORG

REPRESENTATIVE AT LARGE: JERRY ERDMANN
W15416 Fair-Morr Rd. • Tigerton, WI 54486
715-535-2094 • REPATLARGEEAST@REDWINGCOLLECTORS.ORG

AUCTION MANAGER: TODD AVERY
29361 Flower Valley Rd. • Red Wing, MN 55066
651-592-3008 • AUCTION@REDWINGCOLLECTORS.ORG

COMMEMORATIVE MANAGER: BOB MORAWSKI
2130 S. Ridgeway Dr. • New Berlin, WI 53146
262-853-8269 • COMMEMORATIVE@REDWINGCOLLECTORS.ORG

EDUCATION MANAGER: GLENN BEALL
215 W. 7th St. • Logan, IA 51546-1221
712-644-2256 • EDUCATION@REDWINGCOLLECTORS.ORG

JULY CONVENTION SUPPORT PERSONNEL:
Pre-registration – JIM & JOYCE SUTHERLAND
AND JIM & KAREN KEYS

Show & Sale – CINDY & PETE MAY
423-639-2477 • SHOWANDSALE@REDWINGCOLLECTORS.ORG

Display Room – LAURA BEALL
605-464-5941 • DISPLAY@REDWINGCOLLECTORS.ORG

IN THIS ISSUE.....



PAGE 3	NEWS BRIEFS, ABOUT THE COVER
PAGE 4	CONVENTION REVIEW, A MESSAGE FROM THE EDITOR
PAGE 5	RWCS FOUNDATION AUCTION, IKE'S COFFEE CUP
PAGE 6	2008 KIDSVIEW PHOTOS
PAGE 8	2008 CONVENTION PHOTOS
PAGE 10	2008 CONVENTION DISPLAY ROOM
PAGE 11	2008 CONVENTION AUCTION HIGHLIGHTS
PAGE 12	RECOVERING FROM A TORNADO IN PARKERSBURG, IA.
PAGE 13	CHRISTEL'S CASH STORES OF BRILLION & VALDERS
PAGE 14	CLASSIFIEDS
PAGE 15	RECENT FINDS & DEALS
PAGE 16	POTTERS PICNIC PHOTOS

MEMBERSHIP

A primary membership in the Red Wing Collectors Society is \$25 annually and an associate membership is \$10.

There must be at least one primary member per household in order to have associate membership. Members can pay for more than one year when renewing their membership. Contact the RWCS Business Office for additional details.

NEWSLETTER EDITOR

RWCS MEMBER RICK NATYNSKI

PO Box 441

ELM GROVE, WI 53122-9998

NEWSLETTER@REDWINGCOLLECTORS.ORG • 414-416-WING (9464)

The Red Wing Collectors Society, Inc. Newsletter is published bi-monthly by the Red Wing Collectors Society, Inc. Suite 300 • 2000 West Main Street Red Wing, MN 55066.

Phone: 651-388-4004 Fax: 651-388-4042

WWW.REDWINGCOLLECTORS.ORG

Postmaster: Send address change to: Red Wing Collectors Society, Inc. Newsletter
PO Box 50 • Red Wing, MN 55066. USPS 015-791; ISSN 1096-1259.

Copyright © 2008 by the Red Wing Collectors Society, Inc. All rights reserved.

The Red Wing Collectors Society, Inc. does not guarantee the accuracy of articles submitted by individual members.

NEWS BRIEFS

RED WING HOTELS TO HOLD ROOM BLOCK FOR 2009 CONVENTION

Dear Red Wing Collectors: First of all, I would like to thank you all for coming to Red Wing for the 2008 convention. We are so happy to have you here and will be ready to welcome you back again in 2009. The Red Wing Visitors & Convention Bureau and RWCS Executive Director Stacy Wegner met with a group of lodging hosts to see how we can make it easier to provide lodging for Red Wing collectors during Convention. We will provide options with rates in a future newsletter for an early bird sign-up due by April 1, 2009. If you haven't decided by then, you might have to pay a higher rate should you choose not to sign up early. This is a premium time of the year so plan on booking early to take advantage of your Red Wing collector's rate!

We are in hopes of putting together a committee to make this one of the best conventions ever and we look forward to hosting you again in 2009!

-Kathy Silverthorn, Executive Director, Red Wing Visitors & Convention Bureau



VOLUNTEER SPOTLIGHT: NANCY LAMBERT

I'm honored to introduce you to fellow member and volunteer Nancy Lambert, who's an active member of the Red Wing Collectors Society and Trails West Chapter. Nancy submitted the design that was selected to create the volunteer pin that was introduced at the 2008 Convention.

Nancy is not new to volunteering. She is an active member of the Trails West Chapter and is currently serving as the group's treasurer. She has also volunteered her time during past MidWinter GetTogethers and Conventions. Without the assistance from members like Nancy, we would not be able to pull off all of the great things that happen at these events. Please congratulate Nancy on her pin design when you see her at MidWinter or Convention in 2009.

A big thank you also goes out to all the other members who offered their input and design ideas during the creative process that resulted in our new volunteer pin.

-Bonnie Myers, RWCS Volunteer Committee Chair



CONVENTION THEFT ALERT

One of the great things about Red Wing collectors is that we're a pretty trustworthy group made up of many good people. Someone went against that notion, however, at this year's Convention. RWCS member Keith Klindworth reports that his storage garage at Pottery Place was broken into between the late evening hours on Friday, July 11 and the early morning hours on Saturday, July 12. Several items were stolen, with the more recognizable items including a 4 gallon zinc beehive with 4-inch wing and oval (faint line in spout), 3 gallon zinc beehive with 4-inch wing and oval, 15 gallon salt glaze upturned leaf crock (faint crows foot on back), 20 gallon salt glaze primitive butterfly (large rim chip above right handle and glazed-over chip on top of right handle), and a 3 lb. pantry jar lid with a repaired chip. He asks collectors to be on the lookout for these pieces and to contact him at 651-388-9872 if they think they might have spotted any of them.

LAWRENCE ORLOWSKI: 1920-2008

Lawrence Orłowski, charter member #106, died April 13 at the age of 88. Daughter-in-law Jean Orłowski reports that Lawrence really enjoyed "the hunt" for Red Wing and attended every Convention. He lived in Nekoosa, Wis. until 1991, when he married his second wife, Maggie, and moved to Tomahawk, Wis. He will be deeply missed.



ABOUT THE COVER

What do you do when you have an awesome piece of stoneware that needs a lid? Bring it to Convention to find the perfect fit! That's what RWCS member Al Kohlman did with the 2 gallon zinc glaze churn with six-inch wing that he recently snagged.

Al's churn is the only one like it currently known to exist. Why? Because the six-inch wing was a marking used only on crocks, jugs and churns sized 5 gallons and larger. The largest wing typically found on pieces 4 gallons and smaller is a 4-inch wing.

Other small pieces with large wings are known to exist, such as a 3 gallon shoulder jug with 6-inch wing that sits in the Red Wing Pottery Museum in Red Wing and a 4 gallon shoulder jug with 6-inch wing that was listed on eBay last year. Whether it was a mistake or done on purpose, stamping an ink marking on a piece of stoneware was an easy thing to do, so there's no doubt that more of these non-standard production items are out there waiting to be found.

Above and cover photos courtesy of Scott Spompinato.

CONVENTION REVIEW



STACY
WEGNER

Executive Director

Well, another Convention is behind us and more than 1,500 of you made the trip to Red Wing despite the high gas prices and harsh weather. Thank you for coming and hopefully you all had as much fun as I did this year.

First off, I want to take this opportunity to thank the more than 180 volunteers that make Convention possible. Without your effort, it would not be so successful. A special “thank you” that got missed at Convention was to the members who submitted designs for the new volunteer pin. Though all the designs were very good, Nancy Lambert’s was selected as the winning design. I heard several members talking about how much they liked the pin. Don’t forget to bring it back to next year’s Convention to upgrade your year rocker.

A number of new things took place at Convention this year. The new Volunteer Oasis was a big hit along with the pin. The weather held off to hold the Potter’s Picnic at Pottery Park, sponsored by the Red Wing Chamber of Commerce. I am glad that so many members turned out despite the heat, looming storms and unfamiliarity of the new site. Hopefully, all you sellers found a snack on the aisle cart

during set up on Saturday that kept you going in the heat.

Congratulations to the Nebraska Chapter for winning first bragging rights to the Little Brown Jug of Membership. Following Convention, I also drew the names of a new member and the referring member to win either one year of membership or free registration to a 2009 RWCS event. The winner is C.J. Freeze from Sioux Falls, SD, who was referred by the Ephraim Pottery Website. These members need to contact the RWCS Business Office to claim their prize. The slate is clean and now the contest for 2009 begins to find out which chapter will lay claim to the traveling trophy.

We have a few lost-and-found items discovered at Convention at the business office: a Black Hills Gold mother’s ring, a cell phone, a white jacket and a clipboard. If you think one of these items is yours, please call the business office to identify it.

Once again, a huge “thank you” to the volunteers and the outgoing managers who served on the Board of Directors. All of you make Convention possible. I look forward to working with all the volunteers and newly elected managers in 2009. If you’re interested in volunteering, please contact Katie in the business office.

As we shift to thinking about MidWinter, I’d like members to contact me with their song requests for the Friday Night Social. The theme is “Back to the 50s.”



INTRODUCING THE YOUNGEST NEW RWCS MEMBER

The 2008 Convention was the first I missed since starting to collect Red Wing in 2001, but everyone agreed that I had a good excuse. My wife, Elsa, and I welcomed our first child into the world – Synneva Lyn Natynski. Weighing in at 9 lbs. 4 oz. and measuring 21.5 inches long, she was named after her great-great grandmother. Pronounced Sin·uh·vuh, it’s a Norwegian name that means “sun’s gift.” As the photo shows, she’s excited to begin collecting, wearing the “Crock collector in training” onesie from Grandma and Grandpa Natynski.

Synneva will have a great story to tell, as she was born at 9:21 p.m. on July 10, which happened to be *during* the Convention Auction. I think Mom and Baby conspired for this to happen so I wouldn’t have time to call a friend at the auction and have him bid on stuff for me, but that’s OK. Hopefully we’ll “plan” a little better so our next child isn’t born during a RWCS event.

Many thanks to all the members who sent cards and e-mails extending their well wishes after our daughter’s birth, and to Artists In The Park for sending Synneva her first piece of stoneware. I’d also like to thank RWCS member Jonathon Callicoat, who photographed all the goings-on at Convention in my absence. As you’ll see in the following pages, he did a fantastic job. Also thanks to Scott Spompinato and Austin Fjerestad, both of whom sent in several photos from Convention.

-Rick Natynski, Editor

CHAPTER EVENTS

Lewis & Clark Chapter

1 p.m. Mountain (2 p.m. Central) on Saturday, Sept. 27 at the home of Tim & Tammy Leland at 11872 County Road 351K, Sidney, Montana. Please RSVP by calling 406-482-7160 and bring a story or pottery piece to share with the group.

Siouxland Redwingers

Autumn meeting, noon Saturday, Sept. 13 at Valiant Vineyards Winery in Vermillion, South Dakota. Buffet \$10 per person, RSVP required 48 hours in advance. Please contact Julie Ellen Beall for reservations and directions at GBEALL@LOGANET.NET or 712-644-2256.

Wisconsin Chapter

Tour of the Historic Auto Museum in Roscoe, Ill. at 11 a.m. on Saturday, Oct. 26, followed by the fall meeting and lunch at Dominico’s Restaurant in South Beloit. Gary Weinkauff and Kathy Cope have invited everyone to their home in Beloit following the meeting. A mailing with meeting details will be sent to chapter members. Contact Pete Pavloski, president, at PBPVAV@HOTMAIL.COM or 715-325-3715 for more information. Thanks to Crystal O’Sullivan for creating the great Wisconsin Chapter board on display at Convention.

FOUNDATION TO HOLD FALL AUCTION

Story by *Wayne Burk*,
RWCS Foundation Board Member



Photos by
Jonathon Callicoat



The RWCS Museum Foundation Board will host an auction on Sunday, Oct. 19, 2008 to raise funds for the operation and future expansion of the Red Wing Pottery Museum in Red Wing. The auction will be held at Grandpa's Garage in Cannon Falls, Minn.

All proceeds from the sale will go to the Foundation, as auctioneer Dick Houghton is donating his time and the owners of Grandpa's Garage is donating use of the building for the sale. Auction viewing will begin at 8 a.m. on Oct. 19 and the sale itself will start at 10 a.m.

We will allow call-in bids during the auction. Although a pre-sale catalog will not be available, there will be a list of items available on the day of the sale. If anyone wishes to donate items prior to the sale, please contact me at 563-568-4387 to make arrangements.

We would appreciate all donated stoneware, art pottery, dinnerware or Red Wing memorabilia to be as close to mint as possible. Remember, all items will be 100 percent tax-deductible. We truly appreciate all of the pieces that have been donated to us for the sale. So far we have approximately 100 pieces and are looking for about 200 more by sale time. ■

Photos at left: The RWCS Foundation held a Wine & Cheese event on the Wednesday evening during Convention to which attendees brought a piece of Red Wing stoneware, dinnerware or art pottery for the Foundation to auction off on Oct. 19.

OWN A PIECE OF HISTORY: IKE'S COFFEE CUP

Story by *M. Dale Larsen*, RWCS Member
MDALELARSEN@AOL.COM 316-722-6181



Morning Joe: OK, so we might just be having some fun by superimposing this Village Green coffee cup on Ike's desk in the Oval Office, but who knows? Maybe he once sipped from it when reading the morning paper at Gettysburg Farm.

The October 2006 issue of the RWCS Newsletter featured an article on President Dwight D. Eisenhower's 1960 visit to Red Wing to dedicate the new Hiawatha Bridge over the Mississippi River and Red Wing Pottery's gift of a 24-piece, 200-piece set of Village Green dinnerware to Ike. There was an article on the same topic in the February 1988 RWCS Newsletter written by member M. Dale Larsen, who now writes in to say that he owns one of Ike's coffee cups, and it's for sale:

In 1978, as I read about the gift in Madeline Angell Johnson's *Red Wing, Minnesota - Saga of a River Town*, I wondered what had become of it, and as a Red Wing native and collector of Red Wing pottery, if it might be possible to acquire a piece of the set.

I tracked the Village Green from Red Wing to the White House to the Gettysburg Farm to the Eisenhower Museum in Abilene, Kan. In March 1988, I contacted Ike and Mamie's son, John Sheldon Dowd Eisenhower. He graciously responded, noting that his former wife, Barbara Eisenhower, had acquired all of the household odds and ends, possibly including the Red Wing Village Green dinnerware. I wrote to Mrs. Eisenhower and she responded quickly, telling me that she did not recall the Village Green but was interested and would try to track it down and send me a piece of it.

In the meantime, I revisited the museum in Abilene where curator Dennis Medina found that the museum had most of the 200-piece set, but only one cup! Later, Barbara wrote to tell me that her son, David, had located several of the Village Green cups at "The Farm" and that she was sending one of them to me as a souvenir. It arrived Oct. 13, 1988, and I still have it.

The Eisenhower's Gettysburg farm is now a National Historic Site, managed by the U.S. Park Service. My gift from Barbara Eisenhower is quite possibly the only piece of that gift from the Red Wing Pottery to President Eisenhower not in U.S. Park Service control at the Gettysburg farm or in the custody of the Eisenhower Museum and Library at Abilene.

Now, at the vintage age of almost 86 years, I feel it is time to part with what I have come to know as "Ike's Coffee Cup." If you're interested in acquiring it, please contact me.

CLUB NEWS



**SUE JONES
TAGLIAPIETRA**

President

It's my pleasure to welcome the newly elected managers to the RWCS Board of Directors: Todd Avery, Auction Manager, Bob Morowski, Commemorative Manager, and Glenn Beall, Education Manager. It's always difficult to get people to commit to running for office, so thanks for getting involved and we look forward to you serving a long and productive tenure on the RWCS Board. Please take time to welcome the new managers when you see them.

As the new managers begin learning the ropes, there are three outgoing managers we need to thank for the incredible amount of time and talent they dedicated to the Society. First, Terry Speedy served as the interim Education Manager for two years. Terry graciously helped the Society out of a tough situation when the previous manager had to resign. Terry, thank you for all that you did to elevate the Education program to the status that it is at today.

Second, we thank John Tremble, who as Commemorative Manager probably won the award for working the most hours in a single convention. He served for two four-year terms and worked through some very tumultuous times. John, thanks for your dedication and ability to work tirelessly all those months each year before and after Convention. People don't realize it, but just as John would get a commemorative finished each year, it was time to start all over with the production of a new one. The cycle never stopped. Now it can for you, John. Thank you for all that you have done for RWCS.

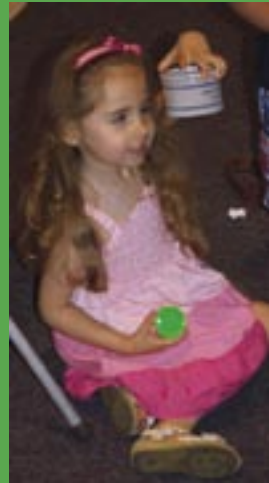
At 15 years, Jeff Floyd served as the Auction Manager longer than many of the youngsters that participate in KidsView have been alive! How daunting it is to step in after someone like Jeff who ran such a flawless program for so long. He made it look easy, although he always gave the credit to his family and the volunteers who helped him. Thank you, Jeff, for all your years of service on the RWCS Board of Directors. The Society is extremely indebted to you for your service and loyalty.



*Photos by
Jonathon
Callicot*



KIDSVIEW 2008



KIDSVIEW IN REVIEW

As always, there was such joy watching the children reconnect with their KidsView friends from past years and glide into the familiar activities they have come to know and love. More than 60 kids were on hand for the traditional Thursday activities. Once again, Dick Houghton helped make the annual KidsView Auction a success. Some of the children participated in a real "Show & Sale" and learned to negotiate good prices for their favorite piece. Mike Robinson wowed the kids again by helping them create their own stoneware necklace.

We also used the historic Red Wing Potteries Ledger as our guide when Dave Kuffel helped the kids explore the subject of Red Wing advertising and the many different companies that used stoneware in their advertising. Then the work whistle blew and the kids stepped back to 1906 and learned just what it was like to be potters and fill custom stoneware orders from six companies. With help from Kevin, Paul and Mary of Ephraim Pottery, the kids worked on a real pottery wheel and visited six different work stations to manufacture the finished product. The crocks are being fired and will be returned next summer for the kids to inspect and assemble a display of their wares in the Display Room.

Golden State Donation
The Golden State Chapter once again held its annual auction in June specifically to raise money for KidsView. At the Annual Business Meeting, Chapter President Bruce Cameron presented KidsView Co-Chairs Wendy Callicoat and Sue Jones Tagliapietra with a check for \$2182.50. The Golden State members believe that children are the future of our Society and that we need to invest in that future. Thank you, California!

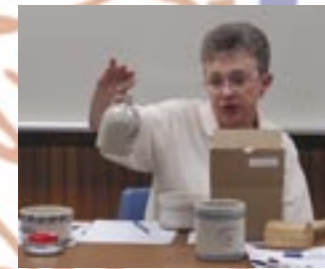
2009: KidsView's 10th Anniversary

Next summer marks the 10th anniversary of KidsView and what a celebration it will be! Kids, stay tuned to the RWCS Newsletter to get some hints about what to expect. For starters, you might want to sharpen your shovel and dust off your hard hat as you never know when you might need one or both. A note to KidsView graduates: we would love to hear from you to find out if you are still collecting Red Wing.



RED WING CO Conve

20



COLLECTORS SOCIETY ☆

CONVENTION

2008



Photos by Jonathon Callicoat



Wing



2008 CONVENTION DISPLAYS

Photos by Jonathon Callicoat

Those who attended the RWCS Convention in 2008 were treated to marvelous displays. We appreciate the work and creativity of all displayers and volunteers in helping make a well-rounded 2008 Display Room. Thanks also to Stacy Wegner, Katie Hardyman and the RWCS Board of Directors for their dedication and support, and to Carol Amberg and the Red Wing High School Custodial Staff.

Laura Beall will be Display Chair in 2009. Laura has been a regular displayer and a Display Room volunteer for six years, so she's well acquainted with her new tasks and we know she'll do a remarkable job. Her contact info can be found on page 2.

Glenn & Julie Ellen Beall
GBEALL@LOGANET.NET or 712-644-2256



2008 Commemorative Display: by John Tremble & Matt Huepful. (non-competitive)



Dennis Yaeggi Rare Item Award: "Josephson Floor Vase" by Keith Klindworth.

Other Rare Items displayed by: Joyce Anderson, Bob Morawski, Howard Morgan, Brent Nottingham and Ken Williams.

ART POTTERY



People's Choice & Best of Show: "Nokomis" by Evelyn Stein.

Other Art Pottery Displays: "Big Boys of Red Wing" by Ron Linde and "Minnesota Centennial" by Mark Peterson.



People's Choice: "Cookie Jars" by Tammi & Jon Hawley.



Best of show: "Damask-Like China Pattern" by Jamey & Flo Jensen.

STONEWARE



People's Choice: "75 Years Digging in the Dump" by Austin Fjerestad.

Best of Show: "Pitcher Yourself in Iowa" by Art Holliday.



Other Stoneware Displays: "Oddball Stamps" by Bob Morawski and "Shenkeberg Three-Star Coffee" by Catherine Beall.

MEMORABILIA



People's Choice: "Strike" by Samuel Edge.

Other Memorabilia Display: "Bobwhite Picnic" by Quinn & Coralee Hawley, youngest displayers.



Best of Show: "Paintings by Charles E. Murphy" by Laura Beall.

20 GALLON SALT GLAZE DRAWS \$7,700

Not even a nearby tornado that prompted an evacuation of the Red Wing High School Gymnasium could stop the bidders and buyers at the 2008 RWCS Convention Auction. The Auction totaled \$128,550.

Selling in stoneware was a 20 gallon salt glaze crock with two cobalt leaves front-stamped M-1 went for \$7,700. A Monmouth Pottery Albany slip cow and calf sold for \$7,500. In dinnerware, a Charles Murphy signed and dated 1949 experimental plate sold for \$725. Art pottery was represented by a #717 Nokomis floor vase earning a respectable \$2,500.

2008 represents my last time managing the RWCS Convention Auction, so I would like to thank the many members that have made it a successful event each year. It has been a pleasure working with Dick, Nancy and Todd Houghton. I also wish to thank all members who have volunteered their time to the Auction. Dan and Jo Allers, Marv and Lorraine Osterholz, Barney Olson, Wayne Burk, Jack Fisher, Larry Seehusen, the Paxson Family, Doug Perkins and all others who helped at the Society Auction.

I also wish to thank the RWCS Business Office and all the Board members I have worked with over the years. Also big thanks to Al Harteneck and the staff at Red Wing High School for their help over the years.

Finally, a big thanks to the RWCS membership for putting all the great pieces into the Society Auction and doing a great job of bidding on those pieces. Since 1995, the Society Auction has grossed \$1,990,427!

If any member would like a 2008 Auction catalog with prices realized, please send a check for \$3 made payable to RWCS to me at 208 E. Somonauk, Yorkville, IL 60560.

Jeff Floyd, RWCS Auction Manager



Signed Monmouth Pottery Albany slip cow and calf, chipped horn, \$7,500



Although Convention attendance was down due to high prices at the pump, the Red Wing High School gym was packed as usual for the RWCS Thursday Night Auction.



20 gallon Minnesota front-stamped salt glaze double leaf crock, \$7,700.



5 gallon Elephant Ear beehive jug, \$2,500.



10 gallon churn with 6-inch wing, inside rim chip, \$2,400.



2 gallon straight-sided birchleaf Ice Water cooler, backside hairline, \$2,700.



Lunch hour plate painted by Pottery employee Emily Carstens in 1948, featured in Dec. 2007 RWCS Newsletter, \$450.



Nokomis glaze floor vase, \$2,500.

OTHER PRICES REALIZED:

- "Vintage" pattern test plate. True China shape with glaze numbers on back side with factory separation, \$450
- Zinc glaze Christmas Tree Holder, \$975
- 15 gal transition Elephant Ear crock w/ Union oval, handle chip, \$2,600
- #143 Brushware vase, bottom signed, \$140
- 10 gal two-piece RW Success Filter, top mint, bottom cracked, \$825

- 2 gal Elephant Ear crock with Minnesota oval, interior rim chips, \$675
- 215L yellow glaze vase, bottom signed, \$160
- Charles Murphy signed and dated dinner plate in Chrysanthemum pattern. Marked "Sample May 20, '49. CEM, 150-38." Mint, \$725
- Sponge cap adv. bowl "Cornell & Klonglands Stores, Utica-Albion," \$425
- White Monk cookie jar with black trim, repaired chip, \$625
- 6 gal Ice Water cooler w/ Oval over 6" wing, base chip & spider, \$400

RECOVERING FROM A TORNADO IN PARKERSBURG, IA.

Story by Rick Natynski, RWCS Newsletter Editor

Red Wing collectors Bruce and Cindy Simon were like most of us in thinking that although tornados hit communities all the time, one would never hit their home. But that changed when an F5 tornado rolled through their hometown of Parkersburg, Ia. on May 25. About 250 homes were destroyed that day – a significant portion of the town considering it only has about 2,000 residents.

Bruce and Cindy were out of town at a graduation party with their two grown sons that evening when Bruce received a call on this cell phone shortly after 5 p.m. telling him that a tornado had hit Parkersburg and people were being pulled out of the grocery store located only four blocks from their home.

“We got home about 7 p.m. and didn’t know what to expect,” Bruce says. “When we were going down the road in our neighborhood, I didn’t know where I was at because so many homes and other buildings were gone or severely damaged.”

They finally saw their house and were glad to see that the walls were still standing. The roof, however, was gone. Their belongings were mixed with dirt and insulation and scattered throughout their home and yard. The windows were blown out of the Simons’ vehicles, and pieces of wood were protruding from the home’s brick exterior.

“It was a weird feeling seeing our home in such bad shape,” Bruce explains. “There was no way I could sleep that night because I was asking myself, ‘What do we do now?’ We had nowhere to go.”

The couple also owned a car wash in town that was completely destroyed, where Bruce’s uncle happened to be taking shelter there when the storm hit. He sustained a head injury, but fortunately was able to be released from the hospital a few days later.

Among all their possessions that were destroyed, the Simons also lost several antiques and more than a dozen pieces of stoneware. Fortunately it was only a small portion of their collection, as most of their Red Wing and Western was kept in the basement, which was spared. Still, some of the valuable pieces upstairs were lost and other damage has yet to be assessed because the couple moved their collection into storage before having a good chance to look it over.

One of the oddest things was how a fruit jar that was displayed in their front room was found broken in a room on the other side of the house – apparently taking several turns down a hallway to get there.

“There were a few strange stories like that where cars were picked up and flung around, but yet the lids on top of the stoneware jars that we had displayed above our kitchen cabinets were undisturbed,” Bruce says. “The winds reached 300 miles per hour, but where one jug was picked up and blown away, the one sitting right next to it didn’t move at all. It’s hard to understand.”

Since the storm, the Simons have been living in their yard in a small camper as their home is being repaired. They’re hopeful it’s finished by October, well before the snow flies.

“Being a big Red Wing collector, my biggest piece of advice for other collectors is to make sure that they’re insured,” Bruce recommends. “I think we would’ve lost a lot more of our collection if we didn’t have brick walls. We had a fine arts policy, so several of the pieces we lost were covered. We didn’t have it updated though, so the pieces we added to our collection more recently were not covered.”

One of those pieces was a small Western Stoneware jug valued around \$600, which the twister must have sucked up because no shards were found.

“Videotaping your collection is a great thing to do because it’s easy and it really helps prove to your insurance company what you had,” Bruce says. “I wish we had videotaped the contents of our entire home, because the insurance company usually wants an itemized list down to the number of washcloths you had.”

Although it’s difficult to know for sure unless it actually happens, Bruce also recommends being covered by an insurance agency that’s good to work with. While his company was one of the better ones, he heard horror stories from other Parkersburg residents who had problems dealing with their insurance adjusters. If that does happen, Bruce suggests notifying the Federal Emergency Management Agency (FEMA).

“After having this happen to us, I can say it’s better to be over-insured than under-insured,” he adds. “Since we hadn’t updated our policy in some time, it will cost us a lot to replace some of our property.”

Bruce and Cindy said one thing that has really helped in the recovery process is all the help and support they’ve received from friends, family and good Samaritans. Volunteer groups helped clean up their property, and thanks to friend and fellow RWCS Member Tony Peacock spreading the word, many people sent cards and money to help the Simons get back on their feet. A woman from the Blue & White Club even sent them a little blue-banded bowl to help them replenish their collection.

“We didn’t even know her – she just sent it out of the goodness of her heart,” Bruce says. “The outpouring of support has been awesome and we really appreciate everything that people have done to help us out. It’s a good feeling knowing that so many people care.” ■



Above: Scenes from the Simons’ home after the tornado hit. Note the stoneware on the shelves and kitchen cabinet, untouched by the twister. *Below:* Bruce Simon takes a break from cleaning to survey his home’s damage.





My Red Wing sponge band pitcher advertised a location I was familiar with. From the very beginning the Brillion advertising, “Christmas Greetings from Christel’s Cash Store, Brillion, Wis.” kept pulling at me. I had tried to sell it several times, always secretly hoping no one would buy it at the hefty price of \$595. Questions intrigued me: Who was Christel? Where was the Brillion Christel’s Cash Store?

Just the word “Brillion” conjured up visions of life in that small village of about 1300 people in the 1940s. Located less than a 30-mile drive northwest from the Lake Michigan shoreline city of Manitowoc, Brillion remains very special to me.

The best times of my childhood were a summer week each year with my grandparents. Their house was near one end of Main Street and my uncle’s meat market was at the other end—about a three block long walk for a child’s legs. It meant stops along the way at the post office, fire station sidewalk bubbler, treats from the ice cream parlor or bakery shop and finally meat or groceries at my uncle’s butcher shop. Our daily walk also took us past a general store where Grandma shopped that sold hardware, clothing, shoes and groceries – then known as the Fair Store.

What I didn’t know then, was that the store was once owned by Isidore Christel. I knew nothing of the Christel Cash Store when the pitcher came into my collection in 1995. My husband bought it for me knowing how much I enjoyed remembering the Brillion of my youth.

A variety of stoneware pieces with Christel advertising were given away as premiums to favored customers during the Christmas season at both Christel store locations in Brillion and Valders. It started with William F. Christel – a wealthy enterprising man who owned many businesses

in Valders and was known as the entrepreneurial backbone that helped shape the communities of St. Nazianz and Valders in Manitowoc County, and contributed to the village of Brillion in Calumet County. All of the Christel children learned much of their business roles from their well-known father, who eventually became known as “Mr. Valders.”

Born in St. Nazianz in 1883, Isidore was the first of Wm. F. and wife Wilhelmine’s 15 children. He attended schools in Valders and the Manitowoc Business College. He married Ida Jerger in 1904, with a grand reception at the St. Nazianz Opera House.



A small gathering outside the Wm. F. Christel Hardware Store in 1903. It became known as the Valders Cash Store in 1922.

By 1922, the family enterprises of Wm. F. Christel consisted of an auto dealership, three canning factories located in St. Nazianz, Hilbert, and Valders; a Valders tavern containing the Wm. F. family living quarters; a Valders Ford garage, hardware and implement store; the Cash Store in Valders; and five farms with produce used for the canneries. Wm. F. held 13 invention patents for the canning business, many of which are still used in the United States.

In the years that followed, Isidore and Ida raised 12 children of their own in Valders and Brillion. He established his Brillion store on May 12, 1922, committing to “a full line of up-to-date merchandise at reasonable prices” and later that year gave a white Red Wing covered casserole bearing his store’s name to special customers.

Christel’s Store now sold new dry goods as well as groceries in a varied inventory similar to an early department store. The basement area was totally devoted to Christmas merchandise and a Santa’s Toyland from Thanksgiving to Christmas. In a major 1923 business shift, Isidore renamed his store Christel’s Cash Store, Brillion. His new policy read, “...As a cash store we save all the expenses of carrying on a credit business...” Isidore owned and operated the store until 1933, when he sold his Brillion store and relocated to Kiel to operate Christel’s Dept. Store.

It was during the period of 1922-1933 (Brillion) and 1922-1941 (Valders) that Red Wing Union Stoneware produced advertising pieces for the Christel Cash Stores at both locations. A large variety of Wm. F. Christel Valders Cash Store premiums were given to their customers during this period such as bean pots, covered casseroles, sponge band pitchers, yellow saffronware and paneled sponge bowls.

Wm. F.’s family of 13 surviving adult children and their descendants populated nearly 25 percent of Valders by 1951 when the village helped the family celebrate his 90th birthday. Porcelain portrait plates were given out to employees, family and friends during the celebration. He died in Valders in March 1952, and Isidore died in Kiel in 1975.

As it turns out, it’s no small wonder that my Brillion stoneware pitcher kept my attention for so long, as it held a much greater Christel advertising story for me to learn about and share. ■

CHRISTEL’S CASH STORES OF BRILLION & VALDERS

Story by Carol J. Ehrenreich, RWCS Member

Classified ads are 15¢ per word; \$3 minimum charge and are accepted on a first-come, first-served basis.

Ads are divided into the following sections: Red Wing For Sale, Red Wing Wanted, Other Pottery For Sale, Other Pottery Wanted, Events, Auctions, Clubs & Publications and Web Sites, Announcements and Services. You will not be charged for these words, but please indicate which section your ad should be placed in. If ad is to run in more than one issue, please indicate at time of placement. (Note: the small number at the end of an ad tells when the ad expires, e.g., 12/07. Ads without dates are one-time ads.) Please type or print clearly and proof read before submission.

DISPLAY ADS

Display Ad Size	1x	6x
Full page	\$400	\$360
1/2 page (<i>horizontal or vertical</i>)	200	180
1/4 page	100	90
1/8 page	60	45

Display Ad Dimensions

Full Page	7 1/2 x 10
1/2 page (<i>horizontal or vertical</i>)	7 1/2 x 4 7/8
1/4 page	3 5/8 x 4 7/8
1/8 page	3 5/8 x 2 1/4

Display Ads are accepted on a first-come, first-served basis. The publisher reserves the right to refuse ads for any reason.

Ads must be supplied electronically as an EPS or PDF file for PC. Be sure to include all fonts used. If you are unsure about acceptability, inquire with the Editor. There is an additional 10 percent fee for design and makeup if needed. Camera-ready ads are not accepted. Unformatted or unreserved ads will be treated as classifieds.

DEADLINES

Issue	Ad Deadline	Editorial Deadline
February	Jan. 10	Jan. 1
April	March 10	March 1
June	May 10	May 1
August	July 25	July 15
October	Sept. 10	Sept. 1
December	Nov. 10	Nov. 1

EDITOR ADDRESS - New as of April 2008

Make checks payable to RWCS and mail with ads to: Rick Natynski
PO Box 441
Elm Grove, WI 53122-9998

Ads may also be e-mailed: NEWSLETTER@REDWINGCOLLECTORS.ORG with checks sent separately. Or, call Rick at 414-416-WING (9464).

RED WING FOR SALE

Handles and wooden lids. Send SASE for flyer to Larsen's Collectibles, 757 120th Street, Hampton, Iowa 50441-7555. Phone 641-866-6733. 8/08

2008 Red Wing National Convention Buttons: \$3 each, which includes handling & shipping to any location in the U.S. Contact Southwest Redwingers Chapter President Chuck Hanson at 507-282-0837, CDHANSON302@MSN.COM or by mail at 4888 Tee Ct. SW, Rochester, MN 55902.

RW collection for sale. Great prices! E-mail DOGSRUS@METROCAST.NET for mold numbers. 8/08

RWCS Commemoratives – 1989 through 2008 (20 total), mint condition. RWCS Newsletters Aug. 1980 - 2008 (163 copies), plus an anniversary booklet. \$3,500 for all. Call Lila at 218-694-6763 (Bagley, MN) for more information.

For sale: Red Wing 1201 (\$25) and Red Wing 1053 (\$5) vases. Also, Country Garden Dinner Plate (\$15). Shipping extra. "Ask the Experts" evaluations are on RWCS Website under each label. Contact Carole at CAROLEGOODYEAR@MSN.COM or 850-897-2666.

RED WING WANTED

Wanted – Otto Kuehne Preserving Co., Topeka, Kansas bailed jug as shown on pg. 41, Peterson, Peck, DePasquale book *Red Wing Collectibles*. Call Nancy at 785-594-3020.

Wanted – North Dakota advertising crocks, butter crocks, jugs, cherryband pitchers. Also advertising cherryband pitchers from any state and stacking refrigerator jars. Call Sid at 701-749-2586.

CLUBS AND PUBLICATIONS

2005 stoneware book (*Antique Trader Stoneware Price Guide*); includes Red Wing; Monmouth-Western; Blue/White; Eastern U.S. 288 pages; colored photos; \$20 postage paid. Gail Peck, 2121 Pearl, Fremont, NE 68025; 402-721-5721. 12/08

2006 values for *Red Wing Stoneware* and 2008 values for *Red Wing Collectibles*! \$9.95 each or \$17.95 for both plus \$2/\$2.50 postage, respectively. Quantity discounts available. Gail Peck, 2121 Pearl, Fremont, NE 68025; 402-721-5721. 12/08

Blue & White Pottery Club – Visit the club's website for membership form at WWW.BLUEANDWHITEPOTTERY.ORG. Annual membership is \$15 for first member, \$5 each

additional member and \$1 for members under 12 years old. You can also write to B&W Pottery Club, PO Box 460517, Aurora, CO 80015.

Collectors of Illinois Pottery & Stoneware – Visit the club's website at WWW.COIPS.ORG for membership form. Annual membership is \$20 for the first member of the household and \$5 for each additional member. You can also write to COIPS, c/o Susie Nolan, 402 N. Laurel St., Elmwood, IL 61529 or e-mail COIPS@MCHSI.COM.

ROUND OUT YOUR COLLECTION!



Old Stoneware Co.

Hand Painted in Color, Under the Glaze & Fired

Cherryband Pitcher.....\$85

Beater Jar.....\$75

Framed 5"x7" Stoneware Tile in Gallery Frame (not shown).....\$125

Send check or money order (add \$10 shipping):

Artists In The Park - 400 Main St.

Deer Park, WI 54007 Phone: 715-269-5112

RECENT FINDS & DEALS

Did you find a rare piece or a great deal worth sharing? Briefly describe the item, where it was sold, date purchased, venue (store, auction, etc.) and price paid. Send in on a post card, or if you'd like to include a photo for publication, e-mail RWCSNEWSLETTER@WI.RR.COM, or enclose in an envelope. Multiple submissions result in multiple entries in the Newsletter Special Commemorative Lottery at the 2009 Convention. Send to the editor at the address on page 2. All entries received between July 2008 and June of 2009 are eligible whether published or not. Please keep submittals with purchase dates within six months of the newsletter issue.

ITEM	LOCATION	DATE	VENUE	PRICE
Frontenac pattern dinnerware trivet	Ft. Myers, FL	2/08	Thrift store	\$6. ⁰⁰
5 gal crock w/ 4-inch wing & upside down oval, mint	LaSalle, MN	7/08	Auction	\$130. ⁰⁰
RW mini jug w/ "Martin Senour Co." partial paper label, two small chips	XXXXX, MI	7/08	Antique show	\$5. ⁰⁰



BEWARE: Butter crock with fake advertising bought at Wicks Consignment Auction House in Cavour, South Dakota at their "antique" auction on July 12, 2008. The Aberdeen, SD advertising is an exact copy of an original. It's very difficult to detect except for the ink being a little lighter than normal. Some type of very thin transfer. Rubs off like fine skin after a sunburn. Notice how a part of the line on bottom has been rubbed off upon inspection. Not sure of any recourse, if any, on getting money back for this fake item.



-Mary Rudd, RWCS Member

OH, WHAT LUCK!

One Sunday after church, we drove to the Crown Center Antiques Show & Sale in downtown Kansas City. About halfway through the show of more than 100 dealers, we came upon Mr. Joiner's small booth. He's primarily a yard sales/flea market dealer, but wanted to try his hand at the "big" time. We saw this dirty little elephant sitting on one of his tables just waiting for us to pick him up. We examined him closely and asked the price. He wanted \$20, and we offered \$10.

"No," Mr. Joiner said. "Surely he must be worth at least \$20, if not more."

Since we couldn't get a bargain, we thought we'd just move on. Plus, we were not convinced it was Red Wing because it had no markings. But at 4 p.m., just as the show was closing, we went back and offered \$15. "No," was the answer again. Joiner gave us his address, and even offered us his phone number, which we declined.

Later that evening when we got home, Kris opened Ray Reiss' Red Wing Art Pottery Book I, and there it was on page 22. When we looked in our 1997 value guide and it said "#236D-6 3/8" elephant, not officially offered as Nokomis, but....." we figured we made a terrible mistake!

Early the next morning, I drove over to Mr. Joiner's home, missing him by 10 minutes or less. I inquired around the neighborhood if anyone knew Mr. Joiner or his phone number. Nothing. Finally, an elderly gentleman said, "He drives an old Pontiac Grand Am, and might be over in Kansas picking up some 'stuff. He lives with his mother who will not come to the door or answer her phone."

I'd already tried knocking on every door in the place. No response. About that time the postal delivery van arrived, so I inquired of the driver, "Who lives there, and do you have any information that you can share with me?" I got Mrs. Joiner's name and phone number as a result.

About 2 o'clock that afternoon, I drove back past the Joiner's home and there it was, the white Pontiac Grand Am. I almost tore the door handle off our car getting out and knocked on every door again. Still no response.

I was about to leave, when out popped Mr. Joiner. Quickly told him that I'd "come up" with the \$20 if he still had the elephant. He went down into his basement and brought it out. Finally, I had the elephant in my hands! I asked Mr. Joiner if he could remember where and when he bought the elephant.

"Sure," he said. "My neighbor down the street had it sitting on her front porch and was using it as a planter."

He paid \$2 for it, so he was happy. Ten times his money. And we're ecstatic. What a find! Kris spent two days cleaning Mr. Elephant up. Doesn't he look great?

*-Jerry & Kris Mounts, Trails West Chapter
Kansas City, Mo.*



Editors Note: This piece currently books near \$500.



2008 POTTERS PICNIC

Photos by Jonathon Callicoat



COMING IN THE OCTOBER ISSUE...



THIS END UP:
RED WING'S BOXES

THE BACH SHARD
REVISITED

