



VOL. 35 NO. 3

NEWSLETTER

JUNE 2010



RED WING OR BUST!
CONVENTION PREVIEW INSIDE

RWCS CONTACTS

RWCS BUSINESS OFFICE

PO Box 50 • 2000 Old West Main St. • Suite 300
Pottery Place Mall • Red Wing, MN 55066-0050
651-388-4004 or 800-977-7927 • Fax: 651-388-4042

EXECUTIVE DIRECTOR: STACY WEGNER

EXECUTIVEDIRECTOR@REDWINGCOLLECTORS.ORG

ADMINISTRATIVE ASSISTANT: KATIE HARDYMAN

MEMBERSHIP@REDWINGCOLLECTORS.ORG

Web site: WWW.REDWINGCOLLECTORS.ORG

BOARD OF DIRECTORS

PRESIDENT: SUE JONES TAGLIAPIETRA

2219 Lakeland Ave. • Madison, WI 53704-5636

608-241-3072 • PRESIDENT@REDWINGCOLLECTORS.ORG

VICE PRESIDENT: JOLENE McKOON

3124 4th St., Unit 8 • Moline, IL 61265

309-797-3894 • VICEPRESIDENT@REDWINGCOLLECTORS.ORG

SECRETARY: PAULETTE FLOYD

208 E. Somonauk • Yorkville, IL 60560

630-553-9234 • SECRETARY@REDWINGCOLLECTORS.ORG

TREASURER: MARK COLLINS

4724 N 112th Circle • Omaha, NE 68164-2119

605-351-1700 • TREASURER@REDWINGCOLLECTORS.ORG

HISTORIAN: STEVE BROWN

2102 Hunter Ridge Ct. • Manitowoc, WI 54220

920-684-4600 • HISTORIAN@REDWINGCOLLECTORS.ORG

REPRESENTATIVE AT LARGE: RUSSA ROBINSON

1970 Bowman Rd. • Stockton, CA 95206

209-463-5179 • REPATLARGEWEST@REDWINGCOLLECTORS.ORG

REPRESENTATIVE AT LARGE: JERRY ERDMANN

W15416 Fair-Morr Rd. • Tigerton, WI 54486

715-535-2094 • REPATLARGEEAST@REDWINGCOLLECTORS.ORG

AUCTION MANAGER: TODD AVERY

29361 Flower Valley Rd. • Red Wing, MN 55066

651-592-3008 • AUCTION@REDWINGCOLLECTORS.ORG

COMMEMORATIVE MANAGER: BOB MORAWSKI

2130 S. Ridgeway Dr. • New Berlin, WI 53146

262-853-8269 • COMMEMORATIVE@REDWINGCOLLECTORS.ORG

EDUCATION MANAGER: GLENN BEALL

215 W. 7th St. • Logan, IA 51546-1221

712-644-2256 • EDUCATION@REDWINGCOLLECTORS.ORG

JULY CONVENTION SUPPORT PERSONNEL:

Pre-registration – JIM & JOYCE SUTHERLAND

AND JIM & KAREN KEYS

Show & Sale – CINDY & PETE MAY

423-639-2477 • SHOWANDSALE@REDWINGCOLLECTORS.ORG

Display Room – LAURA BEALL

605-464-5941 • DISPLAY@REDWINGCOLLECTORS.ORG

IN THIS ISSUE.....



PAGE 3	NEWS BRIEFS, ABOUT THE COVER
PAGE 4	CONVENTION PREVIEW
PAGE 5	SCHEDULE OF CONVENTION HIGHLIGHTS, 2010 KIDSVIEW
PAGE 6	THE TRAILS WEST CHAPTER GETS IT DONE
PAGE 7	DIRECTOR'S JUG SELLS FOR \$50,000 BID
PAGE 8	BRUNSWICK-BALKE-COLLINDER CO.
PAGE 9	MY GRANDMA'S TIME AT THE POTTERIES
PAGE 10	RED WING'S CONCORD LINE - PART II
PAGE 12	CONVENTION ADS
PAGE 14	CLASSIFIEDS
PAGE 16	STEAM TABLE INSERT JARS

MEMBERSHIP

A primary membership in the Red Wing Collectors Society is \$25 annually and an associate membership is \$10.

There must be at least one primary member per household in order to have associate membership. Members can pay for more than one year when renewing their membership. Contact the RWCS Business Office for additional details.

NEWSLETTER EDITOR

RWCS MEMBER RICK NATYNSKI

PO Box 198

PEWAUKEE, WI 53072

NEWSLETTER@REDWINGCOLLECTORS.ORG • 414-416-WING (9464)

The Red Wing Collectors Society, Inc. Newsletter is published bi-monthly by the Red Wing Collectors Society, Inc. Suite 300 • 2000 West Main Street Red Wing, MN 55066.

Phone: 651-388-4004 Fax: 651-388-4042

WWW.REDWINGCOLLECTORS.ORG

Postmaster: Send address change to: Red Wing Collectors Society, Inc. Newsletter
PO Box 50 • Red Wing, MN 55066. USPS 015-791; ISSN 1096-1259.

Copyright © 2010 by the Red Wing Collectors Society, Inc. All rights reserved.

The Red Wing Collectors Society, Inc. does not guarantee the accuracy of articles or ads submitted by individual members.

NEWS BRIEFS

CONVENTION VOLUNTEERS NEEDED

Every year we rely on a lot of volunteer assistance to put on a great July Convention. Last year more than 170 members supported the Convention. Whether you have a few hours early in the week, during the event itself, or afterwards to clean up, we need you. Remember, volunteering puts your name in the drawing for a Special Commemorative. Don't forget to bring your volunteer pin and rocker for updating.

RWCS member and picnic coordinator Heidi Halen also still needs a few more people to help set up the picnic, answer member questions and tear down. If you're interested in volunteering, please contact Stacy at the business office.

Thanks to Dan Barry, Debbie Gullickson, Keith Klindworth, Wayne & Jean Miller, Connie & Bruce Kolberg, Carol Schaffer and Jim & Karen Key for helping with mailings and office filing. Your assistance has truly been appreciated! We still have many projects, so members in the Red Wing area are asked to volunteer. Many projects can be done from the comfort of your own home.

SPACE REMAINS IN THE 2010 DISPLAY ROOM

The Display Room is still accepting applications for the 2010 July Convention. Spaces are filling up and are given on a first-come, first-served basis, so if you have considered creating a Display, this is your year! Remember, every Stoneware, Dinnerware, Art Pottery, or Memorabilia Display receives a regular Commemorative as a "thank you" for participating, plus you have the chance to win one of two Special Commemoratives for your category! If interested, please contact Display Chair Laura Beall (info on page 2) to discuss space availability and ask questions.

NO DOWNTOWN FLEA MARKET THIS JULY

The RWCS Foundation flea market that usually takes place in downtown Red Wing on the Sunday before Convention won't happen this year, as the city won't close off downtown streets on the 4th of July. However, Pottery Place has its regularly scheduled flea market taking place in the parking lot from 8 a.m. to 4 p.m. on July 4. If vendors are interested in setting up there, call Bernie Bussman at Pottery Place at 651-388-7765 for information.

WHAT'S NEW & HAPPENING IN RED WING?

Red Wing River Rides: www.rustysriverrides.com. A 90-minute cruise on the Mississippi River going right under eagle nests to the mouth of Lake Pepin. Boards off the levee wall at Levee Park. Tours for up to 37 people depart at 11 a.m., 1 p.m. and 3 p.m. Friday through Sunday. Tickets are \$6 to \$12 depending on age.

Red Wing Trolley Company www.redwingtrolley.com. Narrated tour lasts about 50 minutes with stops all around beautiful Red Wing. Ride all day for one low price with "Hop On & Hop Off" tickets. Tickets are available at the trolley office located in the Train Depot. Tours depart from the Depot on the hour between 11 a.m. and 3 p.m. Thursday through Monday. Can seat up to 28 adults – half is enclosed and half is open air. Tickets are \$5 to \$10 depending on age.

Red Wing Farmers Market www.redwingfarmersmarket.org. Open seven days a week at the Train Depot, 7 a.m. until sold out.

Brick House Bar & Grill: 433 Main Street, 651-388-9999. Casual dining nestled in beautiful downtown Red Wing offering lunch, dinner, and weekend breakfast in an upscale atmosphere. Full top-shelf bar and fine wine selection offered. Weekdays, 11 a.m. to 10 p.m.; Weekends, 7 a.m. to 10 p.m.

Provenzano's Ristorante: 240 Harrison Street (Pottery Place Annex), 651-385-5900, www.provenzanos.com. Traditional Italian, family dining, American cuisine. Open for lunch and dinner. 11am - 9:30 p.m. daily.

Smokin' Oak Rotisserie & Grill: 4243 Highway 61 (next to Country Inn & Suites), 651-388-YUMM (9866). Appetizers, specialty pizza, gourmet hamburgers and "famous" rotisserie chicken, beef & pork.

Activities going on in Red Wing during Convention time:

Thursday, July 1: *An American in Paris* showing at the Sheldon Theatre Musical Film Series, 7 p.m., \$5 tickets.

Sunday, July 4: Sheldon Brass Band performance 7 p.m. Central Park Band shell. Fireworks at 10:30 p.m. Bay Point and Levee Park.

Wednesday, July 7: Generation II (Big Band) performs 7 p.m. Central Park Band shell sponsored by the Red Wing Arts Association.

Sunday, July 11: Red Wing Arts Association Garden Tour, 10 a.m. to 3 p.m. Visit www.redwing.org to learn more about these events.

CERAMIC ARTS STUDIO CONVENTION SET FOR AUG. 28 IN MADISON, WIS.

Registrations are currently being accepted for the 2010 Ceramic Arts Studio Collectors Convention, which will be held in Madison, Wis. on Saturday, Aug. 28. CAS Collectors is a group open to all those with an interest in the work of Madison's Ceramic Arts Studio.

The Wisconsin Pottery Association Show & Sale will take place at the Alliant Energy Center from 9 am to 4 pm on Aug. 28, followed by convention festivities at Madison's Howard Johnson Plaza focused around a "county fair" theme. Convention registration, which remains at \$60 per person, includes all evening activities, plus the commemorative. Forms and additional information are available on the club's website, www.cascollectors.com, or by writing CAS Collectors, 206 Grove Street, Rockton, IL 61072.



ABOUT THE COVER

As this issue hits our mailboxes, we're less than 20 days away from making the annual pilgrimage to Red Wing. Highlighted by five great auctions and dealers set up all over town throughout the week, the 2010 Convention is sure to be a memorable experience.

Thanks to RWCS Member Sheldon Bohnhoff for sharing a photo of his impressive Red Wing souvenir mini jug collection for the cover. This is just the tip of the iceberg for Sheldon, who has assembled one of the nicest collections of Red Wing minis around. Sheldon will share more photos of his collection in a future issue of the *RWCS Newsletter*. ■



**STACY
WEGNER**

*Executive
Director*

Soon it will be time to head out on the road to see the “Acres and Acres of Red Wing” at the 34th Annual Convention in Red Wing – July 8-10. This year’s garden-themed Convention is sure to be a great time to grow your collection, cultivate your pottery family relationships and tend your knowledge of all things Red Wing!

The 2010 Convention excitement is growing. More than 35 percent of current members attended last year; let’s make 2010 a bumper crop with more than 40 percent!

To update you on the Membership Committee’s progress, the RWCS Business Office sent out more than 100 free trial membership packets following the April/May promotion. These potential members received the February and April issues of the *RWCS Newsletter*, Convention information and access to the members-only side of the website. We also sent a follow-up e-mail inviting them to join the RWCS that included a brief survey of their experience. We will report on the results at the Annual Business Meeting during Convention at 3:30 p.m. on Friday, July 9.

The business office has also reached out to the Minnesota School of Business’s Digital Technology Program to create a promotional membership video to use on YouTube, the RWCS website and future efforts that target prospective members. We’ll preview these videos at Convention.

Finally, the committee will sponsor a membership tent at the Convention Brat Feed at Pottery Place on Wednesday. The tent will include membership info, possible road show activities and pre-registration pick up. The goal is to attract non-members who attend the brat feed and parking lot sales. We’re also considering a radio remote with KWNG Red Wing to broadcast live from the tent. Please contact me at the office to volunteer to help at the tent.

Congratulations to Char Ackerman who won the 2010 Special Commemorative in the Early Bird Drawing. Remember, there are still other opportunities to win a Special Commemorative:

- Volunteer drawing
- Annual Business Meeting attendance
- Set up a Display
- Silent Auction in Commemorative Room
- Attend the Banquet
- Drawing from newsletter submissions in July

Red Wing Pottery is offering a kiln tour at 10 a.m. on Wednesday, July 7. Tour will be filled on a first-come, first-serve basis. Come and see how the Red Wing Pottery salt glaze kiln operates and learn more about production and firing methods of a modern kiln. For more information, call Red Wing Pottery at 800-228-0174.

NEW: Gift Basket Auction: The RWCS Chapters have been busy pulling together goody baskets that represent their membership states. These baskets will be silent-auctioned during Convention in the high school cafeteria and winners will be announced that the Annual Business Meeting. Proceeds will benefit the RWCS.

The 2010 Convention Picnic on Friday, July 9 will be back in Colville Park – this time at the air-conditioned Courtyard Pavilion. Thanks to Heidi Hahlen for volunteering to coordinate setup. New this year we will have a kids ticket available for purchase onsite at the Convention for only \$6, so if you’re bringing the kids, tickets are available.

New at the picnic: Boat Tours! For those of you looking for something to do before the Picnic, Rusty’s River Boat Rides will offer a cruise starting from Colvill Park at 5 p.m. Tickets are just \$12. Call 612-859-6655 or visit www.RUSTYSRIVERIDE.COM to learn more.

The Annual Crock Hunt will have 17 sites in Red Wing this year. The entry forms are now available for download on the RWCS website, can be e-mailed to attendees or printed for

pick up at the office prior to Convention. The hunt officially starts on Sunday, July 4. Bring your completed form to the picnic for plenty of prizes.

Annual “So Long” Mixer: Members are encouraged to stop at Jimmy’s Pub in the St. James Hotel at 5:30 p.m. on Saturday prior to the Banquet. This event is open to all members whether you want to stop in and have a beverage before heading home or you’re coming to the banquet.

The RWCS Convention Banquet will be held at the St. James Hotel on Saturday night. Come see the Convention Review show, enter to win door prizes donated by local businesses and dine with your fellow members while taking in a great view of the Mississippi River. Tickets are \$28 and all members are welcome!

Facebook submitter needed: The RWCS would like to find a member who would be interested in blogging on Facebook about Convention Week. If you are interested, please contact Stacy Wegner.

Badge Holders: Don’t forget to bring your RED badge holder to Convention. A limited number of plastic badge holders will be available. Please bring your old plastic ones to Convention, too!

Membership Brochures/Newsletters: Contact us if you need to replenish your recruiting supplies. These materials are free and it really helps generate interest in the Society when you hand them out at flea markets and antique shows.

Convention First-Timers: Will this be your first time at Convention? We have two seminars for new attendees that will help you get the most out of your Convention experience. There’s also a free bus tour available on Thursday afternoon.

Visit the Convention page on the RWCS website to get the current schedule, Show & Sale floor plan, education session information, crock hunt form and more.



**TODD
AVERY**

Auction Manager

Can you believe Convention and the much anticipated RWCS Convention Auction are less than a month away?!

It looks like we will have between 275 and 300 pieces in this year’s auction. Attendees can most definitely expect to see some jaw droppers in the lineup. There will be more

than 30 pieces of salt glaze, 50 pieces of advertising and at least two pieces that I personally have never seen before.

I’m still looking for a few more volunteers to help out with the auction – particularly for the viewing on Thursday afternoon. Anybody who can give some time is welcome to help.

As a reminder, auction items can be dropped off between noon and 3 p.m. on Wednesday, July 7, and 8 a.m. to 11 a.m. on Thursday, July 8, the day of the auction. Catalogs will be for sale during these times as well, and prices-realized catalogs will be available for purchase at the Saturday Show & Sale. We look forward to seeing you in Red Wing!

SCHEDULE OF CONVENTION HIGHLIGHTS

View the entire 2010 Convention Schedule online at www.redwingcollectors.org



Wednesday, July 7:

Board of Directors Meeting – 8 a.m. to noon, RW High School
Brat Feed – 11 a.m. to 3 p.m., Pottery Place
Auction Check-in – noon to 3 p.m., RW High School

Thursday, July 8:

Registration – 8 a.m. to 7 p.m., RW High School
Commemorative Room open – 8 to 10 a.m., 1 to 4 p.m., RW High School
Auction Check-in – 8 to 11 a.m., RW High School
Welcome Session/Keynote Presentation – 10:30 a.m. to noon, RW High School
KidsView Seminars and Auction 1 to 3 p.m., RW High School
Auction – 4:30 p.m., RW High School
Display Room open – 5:30 to 8 p.m., RW High School

Friday, July 9:

Registration – 8 a.m. to 3:20 p.m., RW High School
Display Room open – 8:30 a.m. to 3:20 p.m., RW High School
Commemorative Room open – 9 to 10:50 a.m., 1:30 to 3:30 p.m., RWHS
Adult Educational Seminars – 10 a.m. to 3:20 p.m., RW High School
KidsView Seminars – 10 a.m. to noon, RW High School
Annual Business Meeting – 3:30 p.m., RW High School
Potters Picnic – 6 p.m., Colvill Park

Saturday, July 10:

Registration – 8 to 10:30 a.m., RW High School
Commemorative Room open – 8 a.m. to 1 p.m., RW High School
Display Room open – 8 a.m. to 1:30 p.m., RW High School
Show & Sale – 9 a.m. to 1:30 p.m., RW High School
Mixer & Banquet – 5:30 p.m., St. James Hotel



KidsView 2010: Back to Basics

Are you ready? This year we're not only doing all of the cool things you look forward to every year at KidsView, like bidding at the auction and painting real Red Wing plates, but we're also going to do some time traveling. Have you ever done that before?

We're going back in time to recreate places that are now empty fields. First we'll learn how this whole business of making pottery started and then we'll create what the Red Wing Potteries started out manufacturing.

You'll have a chance to win some prizes if you pay attention and remember all the clues. It's bound to be fun, so plan on attending. This is guaranteed to be a good time and you'll also learn a lot. Parents, please remember to pre-register your children for KidsView so we have enough supplies on hand.



**GLENN
BEALL**

Education Manager

I hope you're all getting excited about Convention. Our education seminars promise to be very interesting and informative this year, kicking off with keynote speaker Jerry Mewhorter, who will discuss his experience as former plant superintendent of the Red Wing Potteries.

Catherine Beall will give an orientation for first-time Convention-goers and Bob Downs will discuss the complete production of the 2010 RWCS Convention Commemorative. Larry Birks will present "Stoneware Fakes" – sharing tips on how to identify fakes.

"Stoneware and Non-Decorated Watt Ware" will be presented by Phillip Meyer, and back from her debut at MidWinter, Diane Roupe will speak about how Red Wing crocks were first used in fermenting pickles and sauerkraut, how to extend the life of your garden in the winter and safe canning practices.

Bill and Linda Bakken will give two presentations – one on North Dakota potteries and one on Rosemead Pottery.

KIDSVIEW VOLUNTEERS & DONATIONS NEEDED

In order for the KidsView Seminars to be successful every year, we need volunteers to help participants with the various hands-on activities. We're looking for anyone who can offer their services for an hour or more. You'll probably be surprised to find that it's so much fun that you'll want to stay for the entire time!

We also need pottery and stoneware donations for the KidsView auction. We are in our 11th year of having an auction at KidsView and it's just amazing what the children learn. Each year they look forward to finding an item they just might get to take home.

Please comb through your collection and pull out a piece you no longer need. While you might consider pieces like a 2 gallon small wing crock or a Bob White dinner plate to be common, it will make a young collector's day. We offer you a big "thank you" in advance for your generosity. You can either give your items to KidsView co-chairs Wendy Callicoat or Sue Jones Tagliapietra, or bring them to the Red Wing High School Auditorium at noon on Thursday, July 8.

Terry Moe and Larry Roschen will present "Dinnerware Paper Products and Advertising" and Paul Wichert and Linda Krueger will talk about the history of the Red Wing Potteries in "Red Wing 101" and "Red Wing 102". They will also present "Red Wing Trivia".

Our dump diggers will present "Experience the Dump through Steve Showers" and "That Can't be Red Wing: Recent Dump Finds" by Dennis Nygaard and Austin Fjerestad.

Finally, Foundation Board members will do a session featuring new projects, acquisitions and upcoming events at the Red Wing Pottery Museum. I hope you find at least one session that interests you. We appreciate these folks for sharing their expertise with us!



**SUE JONES
TAGLIAPIETRA**
President

My term as president of the RWCS ends at the Annual Business meeting in July. It has been an honor and a privilege to serve on the Board of Directors for the past 12 years and I take with me so many great memories. Thank you for all of your support over the years. It truly does feel like yesterday when I was first elected.

I strongly encourage you to consider running for a position on the RWCS Board of Directors. It is one of the best ways to really understand and have input into how the Society operates. We need members with varied backgrounds and experiences whose insight will keep our Society grounded and responsive to the membership. You will be amazed at how quickly a term of office flies by and will revel at the pride you feel with your accomplishments and the friendships you have made.

Dan DePasquale ran unopposed for the office of president. Dan is an excellent candidate to provide the leadership for the Society. I offer Dan my support and know he will do a terrific service to the membership.

Again, thank you for allowing me to serve as your president. You will continue to see me at Convention, where Wendy Callicoat and I lead the KidsView seminars.



THE TRAILS WEST CHAPTER: A FAMILY BUILT BY RED WING

If a case study were to be written about how to run a successful chapter, the RWCS Trails West Chapter would be an ideal candidate to model. Established in 2002, Trails West is not only one of the youngest RWCS chapters – it's also one of the fastest-growing. While most of the group's 85 members reside in Kansas and Missouri, Red Wing collectors from six other states have joined its ranks.

"The strength of our chapter comes from the friendships that have been formed and the help we give each other," says Trails West Chapter President Larry Birks. "We can't possibly be knowledgeable of all the variety of stoneware, art pottery and specialty items that were made in Red Wing, so we draw on each other's knowledge. The best part is that we aren't competing with each other; we are helping each other to find, acquire, collect and in some cases sell the stoneware we are all seeking."

Trails West updates its website after each meeting so those who weren't able to attend still get a chance to see photos from the event, and the chapter's newsletter keeps everyone up to date with chapter minutes, events and articles.

The chapter doesn't focus solely on sharing interests though. Over the past few years, in fact, Trails West has become best known by the rest of the Society for going above and beyond in its volunteerism and participation in the RWCS Convention and MidWinter events.

In 2007, Linda Russell and her fellow Trails West quilters designed and fabricated a wonderful quilt covered with squares made by each of the Society's chapters. It was raffled off during Convention, with more than \$2,500 going to the RWCS Foundation.

When the Society needed door prizes and silent auction items for MidWinter 2010, Trails West designed and commissioned the production of a great mini jug (center) that raised funds for the RWCS Foundation and KidsView.

Now Trails West has created the 2010 Convention button, which Birks describes as "a statement to the ingenuity, labor and character of our chapter."

While the button's design won't be made public until it's for sale at Convention, the impressive piece might be one of the best Convention buttons ever produced. To top it off, Trails West has announced it will donate \$1 from each button sold to benefit KidsView.

"We are strong supporters of KidsView and recognize the future of Red Wing

Story by
Rick Natynski,
Newsletter Editor



Trails West members assembling the 2010 Convention button.

collecting is within this age group," he says.

With all the Trails West Chapter does, there's no surprise that it's quick to help members in need, too.

"When there's work to be done, our chapter pulls full muster," Birks notes. "That's how we have grown – showing our strength in times of need."

When the tornado tore through the edge of Red Wing during Convention in 2008, the farm of Marty and Althea Voth suffered extensive damage. Trails West members immediately headed for the farm to help clear downed trees and brush.

When a Trails West member was diagnosed with breast cancer last year, chapter members created a prayer quilt and presented it to her at the next chapter meeting. Each member tied a knot in the quilt and said a prayer for a full recovery as they tied the knot. A second member was diagnosed with breast cancer this year, and quilters pulled together once again, making a second quilt in less than a week and delivering it to her the night before her surgery.

"Our chapter's compassion for others is just another reason we continue to bond tighter as a group," Birks concludes. "We're a tight-knit group of collectors with pride in our chapter, the Society and the friendships we have forged. Most of all, we have fun!" ■



CHAPTER NEWS

Chapter Meetings during Convention

All RWCS Chapter Meetings are scheduled for 1 to 2 p.m., Thursday, July 9 in the J 200 rooms at RW High School. Room assignments will be posted there.

Lewis & Clark Chapter (ND & MT)
6 p.m. on Friday, July 9, at Wiederholt's Supper Club in Miesville, Mn.



**Get fired up for the
RWCS election.
You have a CHOICE for
Vice President!**

**Throw your vote to
Diana Bailey!**

Associate members can request a ballot by contacting the RWCS Office. Ballots must be returned to the RWCS Office by June 30.

Advertisement paid for by Diana Bailey.

DIRECTOR'S JUG SELLS FOR \$50,000 BID Story by Rick Natynski

Several rare and one-of-a-kind pieces highlighted the large Richard and Pam Ellis collection of Red Wing and other Midwestern stoneware that was auctioned on May 15 in DeForest, Wis. Run by W. Yoder Auctions, the well-organized sale was attended by RWCS members from at least seven states. Advertising and stoneware animals made up most of the 350 lots in the sale, with a variety of other nice pieces sprinkled in.

Several collectors at the sale noted that an unusually high number of absentee and phone buyers were top bidders on many of the items in the first half of the auction. Promotional materials for the auction did not specify whether or not reserves were in place. A few highlights from the auction are shown below; prices don't include the 10 percent buyer's fee added by the auction company.



Director's Jug: Viewed by most collectors as the most desirable piece of Red Wing Stoneware in existence, only two examples of this large beehive jug are currently known. Collectors commonly refer to it as a Director's

Jug because many believe the jugs were made for the directors of the Red Wing Union Stoneware Co. Others argue that the company made jugs like this to showcase its abilities, as pieces similar in size and stature are pictured in a photo of the RWUSCo's booth at the 1898 Trans Mississippi & International Exposition in Omaha. Regardless of why it was made, it's an incredible piece.

Although listed as a 15 gallon jug in the auction catalog, Ellis said he believes it holds somewhere between 18 and 19 gallons. He purchased this large beehive jug privately in July 2007. The jug sold in last month's auction for \$50,000 – reportedly to a couple from Illinois.



Van Deusen Jug: This one-of-a-kind folk art piece inscribed "M.S. Van Deusen" was made for Murray Samuel Van Deusen, a Red Wing pottery employee who fired pieces in the kiln. The circa

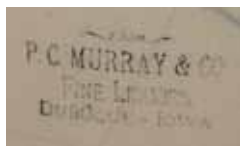
1898 lunch hour jug has what appears to be two birds anchored in love on the front. The artistry on the rest of the jug includes a shepherd with his flock of sheep, a pasture and forest, and clouds and sun done in cobalt.

Ellis privately purchased this jug from Van Deusen's granddaughter in July 2006. The gavel price at the auction was \$12,500.



P.C. Murray Butterfly Crock: This 15 gallon butterfly crock's value lies in its under-glaze advertising ink stamp. Although decorated pieces of Red Wing salt glaze exist with

cobalt stenciling, and there are also variations of salt glaze crocks, jugs and churns that have advertising ink stamps, this is the only one known to bear both a cobalt butterfly and an ink stamp. It's also stamped "Red Wing Stoneware Company" near the front. Pictured on page 42 of *Red Wing Collectibles*, the high bid on this beauty was \$10,000.



Black & White Cow & Calf: Although unsigned, all of this piece's characteristics pointed to it being a Red Wing cow & calf. Its two colors and excellent condition resulted in a final bid of \$5,000.



Lunch Hour Christmas Jug: This small, unusually shaped Albany slip jug bears an inscription of "Christmas 1882 Hoern Sporing St. Peter Minn" and has "Red Wing Stoneware Co. Red Wing, Minn"

scratched on the bottom, under the glaze. Although it wasn't as visually attractive as many of the other Red Wing pieces in the sale, it made up for it with its history. The top bid on this fantastic piece was \$3,000.



Stoneware Bulldog with Rider: One of the strangest pieces in the auction, this stoneware bulldog with a blue-shirted rider was likely made on a pottery worker's lunch hour. Ellis said he bought it from someone who lived 15 miles outside Red Wing. The bidding on this unique piece ended at \$2,750. ■

A LONG DAY ENDS WELL

Story by Rick Natynski

Fellow collector Scott Spompinato drove up to Wisconsin from Nebraska for the Ellis auction back in May and was our guest for the weekend. Some people did well at the sale, but not us. With only a few pieces between us – none being from the top of our want lists – we left with a lot of extra space in the truck.

Gluttons for punishment, we decided to check out at an antique mall on the way home. After 5 minutes of searching, my eyes nearly popped out of my head when I saw Scott pick up a 1 gallon Red Wing jug with W. Korb, Milwaukee advertising.

"How do you like that?" he asked, with a big grin on his face. "We spend the whole day getting our (kiesters) handed to us at the auction, and here's a Korb jug for 28 bucks."

He gave the jug a quick once-over and handed it to me, saying "Here ya go, buddy. Bottom-signed, too."

I have a lot of friends who are collectors, but I'm pretty sure Scott is the only guy who would give away such a prize. He knew I had been pining for one of these jugs for a few years. We spent the next few minutes laughing about the find and joking about whether I should ask the clerk if the dealer would do the customary 10 percent discount.

Fortunately, I returned the favor when I found Scott a nice ½ gal Eastern salt glaze wax sealer jar with deep cobalt. I knew he wouldn't want it for his collection, but at only \$50, he'd easily be able to sell it for a \$100 profit.



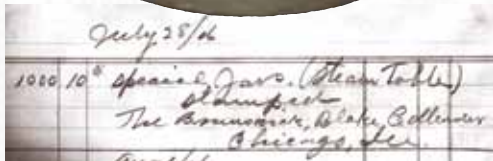
BRUNSWICK-BALKE-COLLENDER

Defined by Diversification



There aren't many companies still around today that commissioned Red Wing to make advertising pieces for them in the early 1900s. There are even fewer that can be found on the *Fortune* 500 list.

One such company is the Brunswick Corporation, which is best known by antique lovers for manufacturing ornately carved billiard tables and massive back bars for taverns and saloons across the United States and Canada in the late 1800s and early 1900s. According to entries in the *Red Wing Potteries Ledger* (pictured below), the Brunswick-Balke-Collender Company ordered at least 1,750 steam table insert jars like the one pictured here between July 1906 and February 1914.



Born in Switzerland in 1819, company founder John Moses Brunswick immigrated to the United States at age 14 and worked briefly as an errand boy for a German butcher in New York City before moving to Philadelphia and apprenticing in a carriage shop. He married in 1839 and moved to Cincinnati a year later.

Brunswick found work as a journeyman carriage maker for several local firms until 1841, when an economic downturn severely

depressed the market for carriages. He worked as a steward on an Ohio River steamboat and a commercial trader until opening his own carriage shop in 1845.

Brunswick's woodworking shop began by making functional, high-quality carriages, but he was willing to expand. The shop soon produced cabinetwork, tables and chairs. Brunswick boasted "if it is wood, we can make it, and we can make it better than anyone else." His willingness to diversify was a sign of the pride that he took in his work and also an early attempt to diversify his product line to counteract fluctuations in the business cycle – a philosophy the company has practiced throughout its history.

The economy began to recover by the mid-1840s and Brunswick prospered. He became active in local political, religious and social circles. Legend has it that in 1845, at a lavish dinner party, Brunswick was led into another room where his host proudly displayed a fancy billiard table, which had been imported from England. Brunswick saw the opportunity to expand his woodworking business. Thus began his company's long association with the sporting goods market.

Billiards had long suffered from a poor reputation and sports in general had very limited mass appeal in the United States prior to the 1850s. Sporting equipment was ornate and was designed for sale to men of wealth. Brunswick's first tables were elaborate luxury items, and as such found a limited market. His four half-brothers joined him in the business and helped expand the market by establishing a sales office and factory in Chicago and other offices in New Orleans and St. Louis.

By the late 1860s, the U.S. billiards market was dominated by three firms: Brunswick, Julius Balke's Cincinnati-based Great Western Billiard Manufactory and a New York-based company named Phelan & Collender. Brunswick merged with Balke in 1873 and Collender in 1884 to ultimately form the Brunswick-Balke-Collender Co.

Brunswick died in 1886 and by 1890 was succeeded by son-in-law, Moses Bensinger, who aggressively expanded the firm's product line. Since many billiard tables were sold to taverns, he expanded the company's line of carved wooden back bars. The intricate and elaborate status symbols greatly enhanced Brunswick's reputation for fine craftsmanship. Initially the bars were custom built, but their popularity soon had the company's Dubuque, Iowa, factory operating at full capacity.

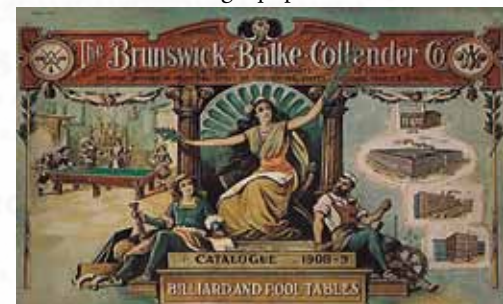
In the 1880s, bowling pins and balls were added as a product line. Taverns had begun installing lanes, interest seemed to be growing, and Bensinger fueled the new

market by promoting the game and helping to organize the American Bowling Congress. Although the company continued to expand its markets and product lines, bowling was to become the firm's financial backbone.

In the 1910s, the temperance movement threatened not only the fixtures and bar business, but also billiards and bowling. In anticipation of Prohibition – which started in 1920 – Brunswick suspended its bar-fixtures operations, which accounted for 25 percent of annual sales. This is when the company's diversification efforts really kicked in. Areas the company pursued include the following:

- In 1912, Brunswick began manufacturing automobile tires and the world's first hard-rubber toilet seats. A decade later it sold its tire line to B.F. Goodrich, who began to manufacture tires under Brunswick's name.
- Brunswick built its own line of phonographs and began producing records under its own label in 1922, signing jazz greats such as Duke Ellington and Cab Calloway. It sold the music business to Warner Bros. in 1930.
- During World War II, Brunswick made mortar shells, flares, assault boats, fuel cells, floating mines and aircraft instrument panels. (It even supplied a component for Patriot missiles during the Gulf War before divesting its defense holdings in 1993.)
- The company changed its name to Brunswick Corp. in 1960 and acquired 18 new firms to further diversify its markets. Companies like MacGregor Sports, Union Hardware, Zebco and Owens Yacht Company made it a major force in sporting equipment.
- Brunswick also entered into the medical supply business – a move that almost led to its demise when the Whittaker Corporation attempted a hostile takeover in 1982. Brunswick fought it off by selling its medical supply business to American Home Products.

Today Brunswick holds a number of subsidiaries; some of the most recognizable include Mercury Marine, Sea Ray Boats and Life Fitness exercise equipment. The company was on the *Fortune* 500 list in 2009 with \$2.8 billion in net sales and 15,000 employees. Although it's come a long way from creating its first line of billiard tables, Brunswick remains true to its roots; it is still known world-wide as the premier manufacturer of billiards and bowling equipment. ■



My Grandma's Time at the Potteries

Story by Lore (Ehmann) Maas

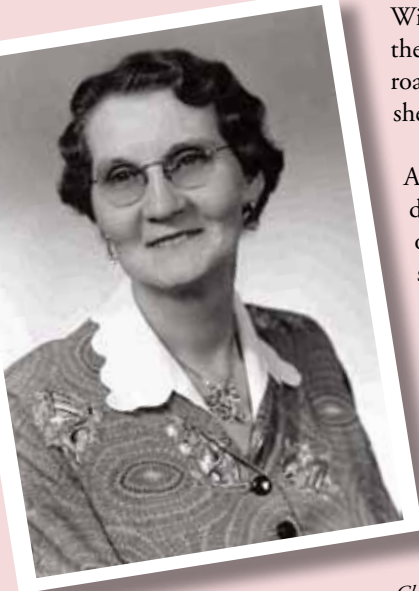
One of nine children, my grandmother, Edith Mae Hall Ehmann, was born May 1, 1886 in Warrentown, Wis. and grew up in Maiden Rock, Wis. She was only 17 years old when she married my grandfather, Fred C. Ehmann, in Pepin, Wis. in 1903. He was a conductor for the Burlington Railroad.

Six years later they had their one and only child – my dad, Donald Ehmann. Grandma lived in La Crosse, Wis. until 1935 when she and my grandfather got divorced. It was around this time that she moved back to Maiden Rock and began working at the Red Wing Potteries. Her brother, Ted Hall, also worked at the Potteries. He retired in 1945.

Grandma was one of the artists who hand-painted Red Wing's dinnerware. She rented a place in Red Wing during the winters to avoid having to navigate the snow-covered roads to Maiden Rock. After a career of nearly 20 years, she retired at the end of 1955.

At some point during her employment, she made pieces during her lunch hours for me, two of my sisters and one of my brothers. These pieces have long been of sentimental value to us, but not being full-fledged Red Wing collectors, we only recently learned that they have substantial monetary value, as well.

My grandma died in 1964, so while we don't know much about her experiences at the Red Wing Potteries, it's certainly nice to have mementos from the time that she spent there. ■



Top left: The plate with a fawn she created for my brother, Don.

Clearly, she was a talented artist. She signed each of these pieces "Grandma Edith" on the bottom.

Middle left: The cup with a duck she painted for me. Although she spelled my name wrong, I still know it was made with love.

Unfortunately the handle broke off at one point, but it was glued back on. **Lower left:** My grandma – Edith Mae Hall Ehmann.

Top right: I believe the cookie jar pictured here was given to her by co-workers whom she did some traveling with. It shows a cat and says "Edith's Lost Glory". Glory was the name of her cat.

Middle right: When my sister, Elaine, was walking through the newer shopping complex at Red Wing's Pottery Place a couple years ago, he was shocked to see our grandma pictured in a large photo hanging in the atrium of women on the painting line. (Grandma's the third person from the left.)

Lower right: My grandma is seated in this nice undated group shot of Pottery workers, peeking over the group of three pitchers sitting on the table.

What was it like for the women who painted dinnerware at the Red Wing Potteries in the 1950s?

Former Potteries employee Carol Betcher, who worked there for nine months starting in July of 1956, shared these memories in her article that appeared in the December 2007 RWCS Newsletter:

"Our eight-hour shift started at 7 a.m. and every morning we walked past all the men who were waiting to start work in the boiler room on the main floor. Our painting area was on the 2nd floor and being above the boilers, it was hot there all year long.

"Each girl painted only one color at a time. Workers were on both sides of a long conveyer belt. As the plates went down the line, each girl would put her strokes on. Some colors would take three or four girls, and other colors one or two girls. Some belts had up to 20 painters depending on what pattern was being done. The lady on the end of the line would have to inspect each piece and stack them on a cart to be taken down to fire the paint colors in. After being fired, they would be inspected again before they were glazed and fired once more.

"When you wanted to take a break, you had to raise your hand (just like in school) and the boss would either put a replacement in or she would stop the line and give all the workers a break. When she was in a good mood, she would stop the line for about three minutes to give our hands a rest. Otherwise we only got a 10-minute break in the morning, a 10-minute break in the afternoon and a half-hour for lunch break during an eight-hour work day."

Red Wing's Concord Line

PART 2 OF 2

© Copyright 2010 Terry Moe and Larry Roschen
Photos courtesy of the authors and WWW.REDWINGDINNERWARE.COM.

The information presented here has been gleaned from vintage Red Wing brochures, catalogs, price lists and internal documents as well as trade journals and magazines. In this discussion, a "pattern" is a dinnerware set in a particular shape with a unique handpainted design or color scheme. A "line" is a group of patterns that share the same shapes but have different handpainted designs or colors. Some of the introduction and exit dates presented have not been verified because of gaps in available documentation. When uncertain, an estimated date is provided. The end point of a pattern can be difficult to ascertain. In the 1940s and 1950s a discontinued pattern no longer appeared on price lists; in the 1960s patterns that were no longer in production remained on price lists as "limited stock" with only a few pieces listed. Here, a pattern is considered to be discontinued when a full range of items was no longer available and orders were limited to remaining stock.

Each pattern has been assigned an Availability rating and a Collector Interest rating as described below. Availability represents an average for the pattern in question, however the scarcity of certain pieces within the pattern may differ. Collector Interest refers to the pattern in general, but there may be specific pieces in any pattern that are of greater interest to specialty collectors (teapots, pitchers, salt & peppers, etc). Please keep in mind these ratings are the authors' observations; your experience may vary.

Availability

- 1 - Rare
- 2 - Very scarce
- 3 - Hard to find
- 4 - Average
- 5 - Readily available

Collector Interest

- 1 - Highly sought, demand exceeds supply
- 2 - Primarily of interest to specialty collectors
- 3 - Above average
- 4 - Average
- 5 - Below average

Red Wing introduced the Concord shape in 1941. A total of 17 to 20 Concord patterns were introduced between 1941 and 1957; the number depends on whether you consider color variations to be distinct patterns. The patterns introduced in 1941, 1952 and 1955 had hollow ware decorated to match the flatware; patterns introduced in other years were glazed in solid colors that were usually shared with other patterns. A 1942 price list showed that covers were initially considered optional for the Provincial and Concord lines. Sugar bowls, cream soup bowls and casseroles could be purchased either with or without a cover. Also, new pieces not made for the 1941 introduction were added later to both lines. For example, the covered beverage server was added in 1949. By this time, Orleans and Brittany were being phased out and Harvest had been discontinued, thus no beverage servers in those patterns were ever made. New items such as the celery, relish and butter dishes, spoon rest, divided vegetable, egg plate, supper trays and gravy boat were added to the Concord line in the late 1940s and early 1950s. These items can be difficult to find in the Lexington pattern because they were not made until nearly the end of Lexington production, and they were never made in the Harvest pattern.

Iris Availability: 3 Interest: 3 Years: 1951 - 1956

Zinnia Availability: 2 Interest: 3 Years: 1951 - 1953



Iris, Zinnia, Quartette and Leaf Magic were introduced in 1951 and with them came three new exterior colors. Quartette was the only solid-colored Concord pattern, and all pieces were available in four colors: Chartreuse, Ming Green, Mulberry and Copper Glow. A set of Quartette could have been purchased all in a single color or the colors could have been mixed and matched as was done in the days of Gypsy Trail. Leaf Magic was not really a dinnerware pattern; the only item was a white dinner plate decorated with three leaves in the Quartette colors. Leaf Magic was intended to be an optional dinner plate for use with Quartette. Besides being Quartette colors, pieces with Mulberry and Chartreuse exteriors were also made to go with Iris, while Copper Glow and Ming Green go with Zinnia. Thus, a Copper Glow base could become either Zinnia (add a white cover with Zinnia artwork) or Quartette (add a Copper Glow cover). Iris and Zinnia flatware had a white background with a hand-painted Iris or Zinnia flower. Iris is considered by many collectors to be Red Wing's prettiest dinnerware pattern.



Quartette Availability: 4 Interest: 4 Years: 1951 - 1956



Leaf Magic Availability: 2 Interest: 2 Years: 1951 - 1953



Several new items were added to the Concord line in 1951. Two styles of supper trays were added; one with the same squared shape and 10.5" size as the dinner plate, the other being oblong and 12" x 9.5". These trays had raised ridges that served as dividers, as well as a place to set a cup. The butter dish, celery dish, relish dish and spoon rest were also added in 1951.



Fruit Availability: 4 Interest: 4 Years: 1952 - 1955



Lanterns Availability: 4 Interest: 4 Years: 1952 - 1955



Fantasy Availability: 3 Interest: 3 Years: 1952 - 1955

An internal company document described the upcoming addition of four new Concord patterns: Lanterns, Fruit, Asters and Buds. Lanterns and Fruit went into production as planned while the name Fantasy replaced Asters prior to production. Buds was shown at a trade show, was not well received, and was subsequently scrapped before being put into production. The only examples of Buds likely to exist were those made as samples or for the trade show, thus any piece of Buds is quite rare and highly desired by collectors. All four new patterns featured hand-painted hollowware, decorated to match the flatware as had been done with Lexington. Fruit was decorated with an apple, pear, grapes and flowers on a pink background. Fantasy featured "an impressionistic interpretation of the lovely aster" on a pink background. Lanterns was decorated with a branch of Chinese Lantern flowers on a light chartreuse background. Buds displayed budding branches on a white background.

The egg plate with center compartment cover and the divided vegetable dish were added to the Concord line in 1952, and the deep-sided coffee cup was added in 1954.



Buds Availability: 1 Interest: 1 Years: 1952



Nassau Availability: 2 Interest: 1 Years: 1953

1953 saw the introduction and quick demise of the Nassau pattern. Nassau flatware was decorated with branches of fern-like leaves in shades of green, yellow and brown on a white background. The exterior of Nassau hollow ware was glazed with a solid dark brown color; it differed distinctly from the more common metallic brown found on many Concord pieces. This color was softer, more of a coffee or cocoa brown, and was used exclusively on Nassau hollow ware. Nassau did not sell and was promptly dropped.



Spring Song Availability: 3 Interest: 3 Years: 1954 - 1956

Spring Song flatware featured two birds sitting on multicolored branches on a white background. Hollow ware exteriors were solid-colored and available in two new colors that were used only with the Spring Song pattern. Initially hollow ware was available only in Honey Beige (tan), but soon light blue was a second color option. Apparently Spring Song didn't catch on with the public as it was produced for only a brief period.



Willow Wind Pink Availability: 3 Interest: 4 Years: 1955 - 1956

Willow Wind Turquoise Availability: 3 Interest: 4 Years: 1955 - 1956



Willow Wind, the last Concord pattern to be introduced, was available in two colors: Willow Wind Pink and Willow Wind Turquoise. The second version is commonly called Willow Wind Blue, but company literature referred to it as Willow Wind Turquoise. Both flatware and hollow ware were hand-painted with branches of willow leaves in either pink or turquoise (blue) on a white background. Like Spring Song, both versions of Willow Wind remained in production for only a brief period as the Concord line was being phased out in favor of newer designs.

STONEWARE AUCTION

WHEN: Wednesday, July 7, 2010 - 3 P.M.

WHERE: Treasure Island Resort & Casino
5734 Sturgeon Lake Road, Welch, MN.

(12 miles north of downtown Red Wing)

We will be conducting a very large, high quality stoneware auction during the Red Wing Collectors Society Annual Convention. The variety of items being offered ranges from salt glaze to zinc, advertising and other related items. A partial list of what will be offered includes winged and leaf crocks; elephant ear churns; 20# butter crocks; Salt glazed crocks w/butterfly, rib cage, leaf and other designs including side-stamped, front-stamped and bottom-signed salt glazed items; winged and leaf churns; Ice Tea; Ice Water and Water Coolers; Applesauce crocks; McCormick-Deering lye dispenser; Elephant ear crocks; Beehive jugs including crocks and jugs with the Minnesota oval; advertising beater jars; large collection of sponge band (greyline) items including salt box, batter bowl, reamer, cake stand, salt & pepper and RARE 12" bowl; sponge items; mini jugs; many lids, including salt glaze; advertising pantry jars; Mason jars; banded rolling pins with advertising; finger jugs; Western pottery items; advertising jugs; advertising bean pots; Stag water cooler; Saffron advertising pitchers; Minnesota Twins ashtray; Refrigerator Jar; assortment of bowls; Commemoratives; plus many, many more items.

Please feel free to contact us for a detailed listing of the items being offered on this auction. Lists will be available June 15. We would love to have the opportunity to visit with you about your collection or individual items that you would like to dispose of.

Auction arranged and conducted by: Gulbranson Auction Service
Dean C. Gulbranson, Real Estate & Personal Property Auctioneer #296
Brookings, SD 605-692-2122 or 605-695-0133
E-mail: GULBRANSONCOMPANIES@SWIFTEL.NET or go to
MIDWESTAUCTIONS.COM & scroll down to Gulbranson Auction Service.



Gulbranson
AUCTION SERVICE
Brookings, SD

RED WING STONWARE & ART POTTERY

AUCTIONS

Tuesday, July 6, 2010 – 3:00 p.m.

NOTE NEW LOCATION: The Bluffs Bar & Grill
(Just across the bridge from Red Wing)
N1833 785th St., Hager City, WI



4, 6, 10, 12, 15 gal Salt Glaze Crocks; 10 & 20 gal Elephant Ear Crocks; Churns; RW Wines & Liquor Jugs; 5 gal Imperial Jug w/Lg Wing; Large Brushware Urn; Lily Pitcher & Bowl Set; Hamm's Bear Bank; Dark Brown Pig; Lunch Hour Cow & Calf; Spongeband Bowls; Cherry Band Pitchers; Peterson Sponge Pitcher; 1965 Twins All Star Game Home Plate; assortment of Artware Vases; Dinnerware: Bob White, RW Restaurant, Damask, Blue Shadow, Brocade, Partyware, Gypsy Trail Reed, Pepe, plus many more patterns. Catalogs available at \$5.00 each.



Wednesday, July 7, 2010 – 10:00 a.m.

NOTE NEW LOCATION: The Bluffs Bar & Grill
N1833 785th St., Hager City, WI

6, 8, 10, 12, 15, 20, 25, 30, 40 gal Wing Crocks; assortment of 2 gal Crocks; 20 gal Double Birchleaf; Salt Glaze Crocks; assortment of Lids, 3, 5, 6, 8, 10 gal Water Coolers; Spongeband; Greek Key; Kitchen Queen Mixing Bowls; Refrigerator Stacking Jars; Greyline; Cookie Jars; Rum Rill Ball Pitchers; Koverwates; Brushware; 1977 – 2008 Commemoratives; assortment of Trader Vic; assortment of Bennington; Bob White; Lg, Med & Small Birch Canoes; Artware plus much more. Catalogs available at \$5.00 each. See the website for pictures of both sales.



HOUGHTON'S AUCTION SERVICE
1967 LAUNA AVE. RED WING, MN 55066
651-388-5870 WWW.HOUGHTONAUCTIONS.COM

GAIL PECK & DAN DEPASQUALE'S



STONWARE SALE

Consisting of Red Wing, Blue/White and miscellaneous stoneware in addition to Red Wing memorabilia

SUPER 8 MOTEL - RED WING, MN
CONFERENCE ROOM, POOL ENTRANCE

Wednesday, July 7, 8 a.m. to 3 p.m.
Thursday, July 8, 8 a.m. to noon

POTTERY PLACE



Flea Market

Sunday, July 4 - 8 a.m. to 4 p.m.

Show & Sale

July 5-10 (Indoor & Outdoor)

Annual Brat Feed

Wednesday, July 7 - 11 a.m. to 3 p.m.

Space available for dealers with quality antiques.

For more information, contact:
Indoor & outdoor space:
Bernie Bussman 651-388-7765

2000 Old West Main Street • Red Wing, MN 55066 • 651-385-5578

AD RATES

CLASSIFIEDS

Classified ads are 20¢ per word; \$4 minimum charge and are accepted on a first-come, first-served basis. In addition to appearing in the newsletter, classifieds and display ads are posted on the RWCS website.

DISPLAY ADS

Display Ad Size	1x	6x
Full page	\$425	385
1/2 page (<i>horizontal or vertical</i>)	225	205
1/4 page	125	115
1/8 page	85	70

Display ads are accepted on a first-come, first-served basis. The publisher reserves the right to refuse ads for any reason. Ads must be supplied electronically as an EPS or PDF file for PC. If you are unsure about acceptability, inquire with the editor. There is an additional 10 percent fee for design and makeup if needed.

DEADLINES

Issue	Ads	Editorial	Mail Date
February	Jan. 10	Jan. 1	Feb. 15
April	March 10	March 1	April 15
June	May 10	May 1	June 15
August	July 25	July 15	Aug. 31
October	Sept. 10	Sept. 1	Oct. 15
December	Nov. 10	Nov. 1	Dec. 15

EDITOR ADDRESS

Submit ads via e-mail and mail check to address below or mail ad and check together. Make checks payable to RWCS. Contact Rick at 414-416-9464 or NEWSLETTER@REDWINGCOLLECTORS.ORG with questions.
Rick Natynski, PO Box 198, Pewaukee, WI 53072

Huge Antique, Stoneware & Toys

AUCTION

2 p.m. Sun. July 4th (Preview: 10 a.m.)
Cannon Valley Auction Center

31664 65th Ave, Cannon Falls MN 55009

Terms: Cash or check. No buyers premium

Phone: 715-299-2543 for questions

E-mail: WISCONSINJUNK@YAHOO.COM

135 pcs Red Wing Stoneware incl 16 Adv Butter Crocks, Adv Jugs & Cherryband Pitchers, 80 Salt Glaze Crocks & Churns plus lots more, some very rare pieces. Duck Decoys, Early Buddy L & Other Toy Trucks, Cast Iron Motorcycles, Gumball Machines, Native American Indian & Eskimo items, Sev Nice Pocket Watches, Coin Op Radio & Gumball Machines, Beer & 10 Coke Trays, Coke Clock, Signs, City Club Beer Coolers, Musical Instruments, PLUS MANY MANY MORE ITEMS!

See website for 100s of photos:
WWW.MILLERSAUCTIONCO.COM

Tim Barnum Reg WI Auctioneer #1284



RED WING FOR SALE

Handles and wooden lids. Send SASE for flyer to Larsen's Collectibles, 757 120th Street, Hampton, Iowa 50441-7555. Phone 641-866-6733. 8/10

Lots and lots of stoneware for sale, from very rare to common. We're the Carter's, stoneware collectors for many years. We are now downsizing. Salt glaze and zinc: crocks, jugs, churns, ice and water coolers, beater jars, bowls, all types of advertising and full set of commemoratives. Way too many pieces to list. We also have lots of Old Sleepy Eye items. Please contact us with your want list of items. We probably have it. 641-673-4781, 641-670-1914 (cell), Jimmy & Becky Carter, PO Box 725, Oskaloosa, IA 52577 or JJCARTER47@MCHSI.COM. 8/10

Mini jugs: 1915 S.M.M.A. "Prescription", \$2,500; RWSCo Albany slip "scratch", \$2,500; Anti-Flu League (1918?), \$2,200; Merrell, Greer, Chapman - two with black printing, one with blue printing, \$550 each. All in excellent condition. Call Wayne or Sue at 952-443-2518. 6/10

Wonderful collection of 88 different RW dinner plates (some rare) from back of Reiss dinnerware book - all well-marked, no chips or cracks, \$1,350. Contact Ron Linde at RONLINDE@LAKES.COM or 952-922-9169.

Coming to Convention from the west and traveling thru Kansas? Be sure to stop in Oberlin, KS located at the junction of US 36 & US 83. Oberlin is known as the antique crossroads of NW Kansas. We have 6 owner-operated antique stores all located along Penn Avenue. Merchandise carried is: 100+ pcs of Red Wing stoneware at "Cabin Antiques"; Civil War memorabilia at "Fort Sappa Creek Antiques"; vintage clothing at "La De Da Antiques"; farm primitives at "Czech Country"; general merchandise at "Traer Traders"; and pocket watches and general merchandise at "Just on Time Antiques". Motor homes & campers may park in the center of Penn Avenue.

Red Wing candy crocks (4.5" h x 4.25" dia), 2005 Preston MN Sesquicentennial logo, only 200 made, \$25; WWII Memorial Entrance to Fillmore Co. Fairgrounds, only 100 made, \$30. Call 507-273-1481.

Two water coolers. Each approximately size 4. Style for both is one crock over another. First has blue "4" while the under crock has a blue STAR over "ICE WATER". Other is a RED WING SUCCESS FILTER water cooler. Lower crock has the big red wing, upper has a printed promotional description in blue. It's also size 4. Both are missing spigots. The North Star's original lid was broken & repaired long ago; 1 small piece is missing, but it's the original lid and it's still there. Red Wing has flat tin lid. Each sold separately to highest bidder over \$2,500. Type, cost of shipping & insurance is buyer's expense, but required, as sale is final. Also have several pieces of yellow ware, including 4 matching tall mugs. Call 770-879-2659 or e-mail CMWJD@HOTMAIL.COM



Super RARE 4 gallon Red Wing Butterfly Churn - Excellent Condition. It is the only one known and was confirmed as an unmarked Redwing piece by Al Kohlmann and Larry Peterson. \$10,000 plus shipping. For pictures and information contact Thomas Noel at JUGGING@MCHSI.COM or 270-489-2440. 10/10

RW Town & Country dinnerware service for 12 plus many extras and several serving pieces. All in excellent condition in an assortment of colors. Call Val at 218-681-3613 for prices and more information or to request pictures.

More than 50 pieces of RW Greenwichstone Ceramastone dinnerware including plates, bowls, cups & saucers, beverage pitcher, salt & pepper, covered butter and other serving dishes. Once belonged to Elizabeth Olson, who was in charge of painting and finishing in final years of the RW Potteries' operation. Price: best offer. Buyer must make arrangements for transporting them from Montrose, Colo. Call Peter at 970-240-4921 or PBURKHT@YAHOO.COM for more information.

3 gal to 30 gal jars plus 3 gal and 5 gal churns with lids. We're in Kansas contact DIANE@GBTA.NET or 785-481-2282 for more information. 8/10

Complete Red Wing Commemorative collection 1977 through 2009. \$5,000. Call 651-433-4113.

Marge Stokke's Red Wing art pottery, dinnerware, Commemoratives and other items. 10 a.m. to 4 p.m. on Monday, July 5 and Tuesday, July 6. I'm 30 minutes north of Red Wing at 220 North Third St. in River Falls, Wis.

OTHER POTTERY FOR SALE

Artists In The Park now has a beautiful display in Red Wing. Stop at Pottery Place Antiques, 2000 Old W. Main * 2nd Floor * and see some of our new special editions. 6/10

RED WING WANTED

Wanted: Knapp, Wis. advertising. Want to learn of the existence of any advertising pieces even if not for sale. To sell or share information contact Tim at 715-263-2118 or TWYSS@CLEARLAKE.k12.wi.us. 6/10

Wanted: Blue sponged panel bowls in 5- and 12-inch sizes. Contact Wayne at 952-443-2518 or PILLROLR@PRO-NS.NET. 4/11

Wanted: Advertising crocks, jugs & churns from NE, ND, SD, KS & others - especially pieces that have a wing, birchleaves or Elephant Ears with the advertising. Willing to pay top \$ for the right piece. Contact Scott at COBE142@AOL.COM or 402-331-4749.

Wanted: Red Wing advertising jugs from British Columbia. Contact 414-416-9464 or NEWSLETTER@REDWINGCOLLECTORS.ORG

CLUBS AND PUBLICATIONS

2009 values for Red Wing Stoneware for \$12.95 and 2008 values for Red Wing Collectibles for \$9.95 or \$19.95 for both plus \$2/\$2.50 postage, respectively. Gail Peck, 2504 E. 21st, Fremont, NE 68025; 402-721-5721. 12/10

Located at
751 Wilkinson St.
Red Wing, MN 55066
651-388-3331 (shop)
612-719-6113 (cell)

LARRY'S JUGS

2010 Convention
Hours
July 2-10:
8 a.m. to 6 p.m.
Sunday, July 11:
8 a.m. to noon



Just in!
Two collections consisting of
more than 900 quality pieces
Salt glaze • Zinc glaze • Advertising
Largest inventory EVER!



BUY • SELL • TRADE
I'll buy one piece, or the
whole collection.
Also taking consignment.



Also open Saturdays in June
(6/5, 6/12, 6/19 & 6/26)
11 a.m. to 5 p.m. or by appointment.



Red Wing Stoneware Encyclopedia
**2nd printing now available
at Larry's Jugs!**
\$29.95 or \$35.00 shipped
Contact Larry for dealer pricing
larrypeterson@edinarealty.com

Visit my booth at
Countryside Antique Mall
31752 65th Ave.
Cannon Falls, MN
507-263-0352



RED WING STEAM TABLE INSERT JARS

“FOR RESTAURANT USE”

Story by Jerry Aronberg,
RWCS Member

As I've recently rearranged some of my Red Wing items, I realized that I don't recall ever seeing an article written about stoneware steam table inserts. I thought I'd send a picture of the three different varieties of them that I own. Steam table inserts were known to be used as far back as 1906*, if not earlier. Occasionally stoneware inserts are found with restaurant advertising markings. Unfortunately, none of mine have such advertising!

Just as glassware spelled the death of stoneware for use as containers, stainless steel spelled the death of stoneware as steam table inserts. How we all wish that buffet food was still served in Red Wing inserts with sterno heaters beneath, rather than the generic, ugly and cold-appearing stainless steel inserts of today. ■

*See the July 1906 *Red Wing Potteries Ledger* entry for the Brunswick-Balke-Collender Co. steam table jar on page 8.

Jerry's Red Wing steam table inserts are shown at right, with the company signature on each jar also shown. To give some perspective of the different styles and sizes of steam table jars Red Wing made, see the jar bottom-marked "C" in the image at the top of the page from *The Red Wing Line* wall-hanging stoneware catalog of the 1920s, which appears in *Red Wing Potters & Their Wares*. Co-author Gary Tefft says the Potteries likely produced steam table inserts until stoneware production ceased in 1947.

At right: a Red Wing steam table jar with hard-to-find Chicago advertising is shown next to its

modern-day predecessor – a stainless steel insert. Also pictured is an example of a steam table used in restaurant kitchens today.



COMING IN THE AUGUST ISSUE...

CONVENTION REVIEW

