



VOL. 35 NO. 2

# NEWSLETTER

APRIL 2010

## MidWinter Jaw Droppers



# RWCS CONTACTS

## RWCS BUSINESS OFFICE

PO Box 50 • 2000 Old West Main St. • Suite 300  
Pottery Place Mall • Red Wing, MN 55066-0050  
651-388-4004 or 800-977-7927 • Fax: 651-388-4042

EXECUTIVE DIRECTOR: STACY WEGNER

EXECUTIVEDIRECTOR@REDWINGCOLLECTORS.ORG

ADMINISTRATIVE ASSISTANT: KATIE HARDYMAN

MEMBERSHIP@REDWINGCOLLECTORS.ORG

Web site: WWW.REDWINGCOLLECTORS.ORG

## BOARD OF DIRECTORS

PRESIDENT: SUE JONES TAGLIAPIETRA

2219 Lakeland Ave. • Madison, WI 53704-5636

608-241-3072 • PRESIDENT@REDWINGCOLLECTORS.ORG

VICE PRESIDENT: JOLENE McKOON

3124 4th St., Unit 8 • Moline, IL 61265

309-797-3894 • VICEPRESIDENT@REDWINGCOLLECTORS.ORG

SECRETARY: PAULETTE FLOYD

208 E. Somonauk • Yorkville, IL 60560

630-553-9234 • SECRETARY@REDWINGCOLLECTORS.ORG

TREASURER: MARK COLLINS

4724 N 112th Circle • Omaha, NE 68164-2119

605-351-1700 • TREASURER@REDWINGCOLLECTORS.ORG

HISTORIAN: STEVE BROWN

2102 Hunter Ridge Ct. • Manitowoc, WI 54220

920-684-4600 • HISTORIAN@REDWINGCOLLECTORS.ORG

REPRESENTATIVE AT LARGE: RUSSA ROBINSON

1970 Bowman Rd. • Stockton, CA 95206

209-463-5179 • REPATLARGEWEST@REDWINGCOLLECTORS.ORG

REPRESENTATIVE AT LARGE: JERRY ERDMANN

W15416 Fair-Morr Rd. • Tigerton, WI 54486

715-535-2094 • REPATLARGEEAST@REDWINGCOLLECTORS.ORG

AUCTION MANAGER: TODD AVERY

29361 Flower Valley Rd. • Red Wing, MN 55066

651-592-3008 • AUCTION@REDWINGCOLLECTORS.ORG

COMMEMORATIVE MANAGER: BOB MORAWSKI

2130 S. Ridgeway Dr. • New Berlin, WI 53146

262-853-8269 • COMMEMORATIVE@REDWINGCOLLECTORS.ORG

EDUCATION MANAGER: GLENN BEALL

215 W. 7th St. • Logan, IA 51546-1221

712-644-2256 • EDUCATION@REDWINGCOLLECTORS.ORG

JULY CONVENTION SUPPORT PERSONNEL:

Pre-registration – JIM & JOYCE SUTHERLAND

AND JIM & KAREN KEYS

Show & Sale – CINDY & PETE MAY

423-639-2477 • SHOWANDSALE@REDWINGCOLLECTORS.ORG

Display Room – LAURA BEALL

605-464-5941 • DISPLAY@REDWINGCOLLECTORS.ORG

# IN THIS ISSUE.....



- PAGE 3 NEWS BRIEFS, ABOUT THE COVER  
PAGE 4 MIDWINTER REVIEW, FOCUS ON MEMBERSHIP  
PAGE 5 RWCS FINANCIAL REPORT  
PAGE 6 SHEDDING SOME LIGHT ON HISTORIC CLAY LAMP POSTS  
PAGE 7 NEW ULM'S RUEMKE BROS. GROCERY & CROCKERY  
PAGE 8 2010 MIDWINTER GET TOGETHER PHOTOS  
PAGE 10 RED WING'S CONCORD LINE  
PAGE 11 MANAGER CONVENTION UPDATES  
PAGE 12 RWCS BOARD OF DIRECTORS ELECTION BIOS  
PAGE 14 CLASSIFIEDS  
PAGE 16 WHAT'S NEW AT YOUR MUSEUM?

## MEMBERSHIP

A primary membership in the Red Wing Collectors Society is \$25 annually and an associate membership is \$10.

There must be at least one primary member per household in order to have associate membership. Members can pay for more than one year when renewing their membership. Contact the RWCS Business Office for additional details.

## NEWSLETTER EDITOR

RWCS MEMBER RICK NATYNSKI

PO Box 198

PEWAUKEE, WI 53072

NEWSLETTER@REDWINGCOLLECTORS.ORG • 414-416-WING (9464)

The Red Wing Collectors Society, Inc. Newsletter is published bi-monthly by the Red Wing Collectors Society, Inc. Suite 300 • 2000 West Main Street Red Wing, MN 55066.

Phone: 651-388-4004 Fax: 651-388-4042

WWW.REDWINGCOLLECTORS.ORG

Postmaster: Send address change to: Red Wing Collectors Society, Inc. Newsletter  
PO Box 50 • Red Wing, MN 55066. USPS 015-791; ISSN 1096-1259.

Copyright © 2010 by the Red Wing Collectors Society, Inc. All rights reserved.

The Red Wing Collectors Society, Inc. does not guarantee the accuracy of articles submitted by individual members.

# NEWS BRIEFS

## CONVENTION PREREGISTRATION, ETC.

Don't forget to pre-register for the 2010 Convention. Mailed forms must be postmarked by June 1 and online registration ends June 8. The tentative Convention schedule is now online. Convention Auction submissions are due no later than May 15; see Todd Avery's report on page 11 for more information.

**Sellers Table:** Contract today for a table at the Show & Sale; contracts are available online or by calling the business office. Just \$45 puts you in front of more than 2,000 Convention attendees and public visitors at Red Wing High School.

**Volunteers:** Every year we rely on a lot of volunteer assistance to put on a great July Convention. Last year more than 170 members supported the Convention. Whether you have a few hours early in the week, during the event itself, or afterwards to clean up, we need you. Remember, volunteering puts your name in the drawing for a Special Commemorative. Speaking of volunteers, RWCS member Heidi Halen has agreed to be the picnic coordinator this year. Thank you, Heidi! She's looking for people to help set up, answer member questions and tear down. If you're interested in volunteering, please contact Stacy at the business office. No amount of volunteer time will be turned away!

Thanks to Keith Klindworth, Debbie Gullickson and Dan Barry for helping with mailings and office filing. We still have many projects, so members in the Red Wing area are asked to volunteer. Many projects can be done from the comfort of your own home.

## FAKE ADVERTISING STONWARE SEMINAR

This year's educational seminars at the July Convention will include a seminar on stoneware fakes. There have been a number of advertising crocks and jugs turning up that have been faked to look like old advertising pieces. The use of old stoneware makes it even more difficult to recognize these advertising impersonations.

We are asking for your help to make the seminar even more productive by sending in pictures of any faked stoneware you may have encountered. If you have any faked pieces that you have been duped into buying, they would be most helpful in showing others what to look for. Any pictures, information or samples will be used in a confidential manner and samples will be returned after the seminars. As collectors, we are all being affected by the production and sale of these fakes, and we need your help to get the most descriptive information out to all of our members. Please e-mail information to Trails West Chapter President Larry Birks at [BRGTR3@EMBARQMAIL.COM](mailto:BRGTR3@EMBARQMAIL.COM) or call him at 816-380-1096.

## RWCS MEMBER PASSINGS

We were saddened to hear about the recent loss of longtime RWCS members Anne Paine-Williams, Duluth, Minn.; Karl Berger, Waukesha, Wis. and Harold Lemmons, Enterprise, Kan. Our condolences go out to their friends and family.



## MONMOUTH POTTERY CELEBRATION: JUNE 26

Celebrating Monmouth, Illinois' historic tradition of creating quality stoneware and pottery is the idea behind the Annual Pottery on the Square Swap Meet event on June 26, 2010. Monmouth's stoneware and pottery history dates back to the 1890s and continues today with Western Stoneware and Maple City Pottery, both of Monmouth.

Beginning at 8 a.m. and running until noon on Monmouth's Public Square, activities will include a pottery and stoneware swap meet, pottery demonstration and window displays of rare pottery pieces. A pottery/stoneware consignment auction will begin at 10 a.m. The public is welcome to bring vintage items the day of the event for the auction or can register them ahead of time and have them advertised on the auctioneer's website – [WWW.BURNSAUCTIONSERVICE.COM](http://WWW.BURNSAUCTIONSERVICE.COM). Auction fees are 10 percent for a sale, 3 percent no sale and \$5 per item check-in fee. Swap meet and consignment auction participants are not limited to Illinois pottery, but pottery items must be vintage.

Also returning to the event this year is the pottery appraisal clinic beginning at 8:30 a.m., where knowledgeable Illinois pottery collectors will be on hand to examine pieces of Illinois pottery brought by the public. Rare items that have been seen at the appraisers booth in the past include a rare Macomb Pottery Duck Decoy, a Bardolph Pottery Pig and a Western Stoneware ice water cooler with a band of leaves and the correct lid.

In conjunction with the event, the Monmouth Area Chamber of Commerce is offering the opportunity to purchase a limited-edition commemorative of an original 4 gallon Monmouth Pottery Co. butter churn (pictured). Like the original, this smaller salt glaze replica is hand-turned. Created at Maple City Pottery, it measures approximately 4 ½ inches tall and 3 ¼ inches wide. Impressed on one side is "Monmouth Pottery Co, Monmouth, ILL" in cobalt with a hand-painted "4" above. "Pottery on the Square" is impressed on the other side along with the Maple City Pottery logo. The deadline for placing orders is May 20, 2010, and they are priced at \$30 each. Shipping charges vary based on quantity. For more information on the event or the commemorative churn, please contact the Monmouth Area Chamber of Commerce at 309-734-3181, e-mail [MACCDIR@MAPLECITY.COM](mailto:MACCDIR@MAPLECITY.COM) or visit the tourism page of the Chamber's website at [WWW.MONMOUTHILCHAMBER.COM](http://WWW.MONMOUTHILCHAMBER.COM).



## ABOUT THE COVER

As always, some great pieces were offered up for sale at February's MidWinter GetTogether held in Des Moines. Some of the best pieces to exchange hands were advertising items— especially the rarely seen pieces from Idaho and Utah. A few of the pieces pictured were brought only to show, such as the only fluted Greyline canister known to exist (pictured above next to a 1992 RWCS Commemorative) and the Albany slip scratched "R.M. Spring Water" jug on the cover, which belongs to a member who has the same initials. ■

Story by Bob Morawski, RWCS Membership Committee Chair



## STACY WEGNER

*Executive Director*

Hola and muchas gracias to everyone who attended the Fiesta in February! Once again our members got into the Fiesta spirit wearing ponchos, sombreros and everything southwest. Special thanks to all the volunteers especially: Jerry Mounts (Friday night emcee), the Trails West Chapter for the door prizes, Dick Houghton for transporting supplies and his auction talents, and Mark Tlusty for Friday night auction support. Without all of this assistance, MidWinter would not be possible.

We had more than 300 members attend MidWinter. It kicked off with the Board of Directors Meet & Greet and ended with a great Sunday breakfast hosted by the Iowa Chapter. Members attending MidWinter had many learning opportunities to choose from. Thanks to Dan DePasquale, Bob Kubes, Steve Showers, Michael Smith and Tammi Soutar Hawley for presenting. We also had a special presentation on canning from “the crock to the jar” by author Diane Roupe. Her session was so well-received that she’s coming to Convention in July!

The Show & Sale was sold out for the 3rd straight year. Thanks to Pete and Cindy and their volunteers that make this event happen each year. Following the event, Houghton’s Auction Service put on another great auction with more than half of the pieces sold benefiting the RWCS Foundation.

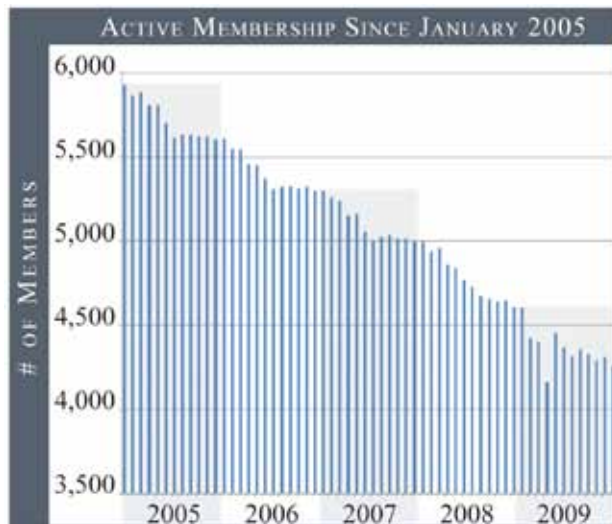
Mark your calendar for the next MidWinter – February 11-13, 2011. The 2011 theme, which was decided by write-in campaign, will be Hillbilly Farmers. Yee haw! The Siouxland Chapter has volunteered to sponsor the Friday Night Hoedown, so start looking for your overalls, straw hats, bandannas and whiskey jugs! MidWinter 2011 is sure to be a knee-slapping good time.

As the chart at right shows, RWCS membership numbers have dropped quite a bit over the past four years. At its high point in the mid-1990s, the Society had nearly 7,000 members. When this newsletter went to print, we had 4,034 members. A survey of former members attributes this to a variety of reasons – two of which include 1) members aging and selling their collections, and 2) the recent economic downturn. A recent series of articles by syndicated antique columnist Harry L. Rinker support this, saying these two issues, among others, are impacting the antique and collectibles market as a whole.

So what does this downturn in membership mean? Simply put, less members means there’s less operating revenue for the Society. To continue to bring you the value you’ve come to expect from your membership, we need to maintain membership levels so we can keep our budget balanced. Retaining current members will always be an important focus, but we also need to make a serious effort to attract new members to our club, because there’s obviously no way to keep members from aging and passing away.

Therefore, the new RWCS Membership Committee has been busy implementing ideas to recruit new members to the greatest collectors club in the country. Fortunately a lot of the work is done for us, because the Red Wing Potteries made a diverse line of awesome pieces that appeal to almost anyone’s taste. Our challenge is to inform as many people as possible about Red Wing’s wares and the existence of the RWCS.

As announced in the February newsletter, we are now selling memberships through a “buy-it-now” auction on eBay for \$25. We have also added the 2010 Commemorative with a new membership in a separate “buy-it-now” listing for \$65 and \$10 for shipping. This listing will run until Convention registration closes. While no one was expecting to move mountains by selling memberships on eBay, we viewed it as a way to publicize the Society at a very low cost. We’ve been pleased with the results to date; we’ve sold about 10 memberships and we believe another 30+ people viewed the listings and joined the Society



by calling the business office directly.

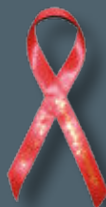
Thanks to financial support from the RWCS Board of Directors, we recently launched a campaign that offers trial memberships to people who might be interested in Red Wing. The trial will consist of participants receiving the February and April newsletters and having access to the members-only section of the website. Then we’ll follow up with an invitation to join RWCS when their trial membership expires. More than 50 people have signed up for the program so far, and we’re expecting many more when we launch the initiative on a larger scale this month.

We’re encouraging local chapters to offer a year of free membership to their group to show new members that there is more to participate in than just the Convention and MidWinter events.

We’re also taking part in a sweepstakes in the *Antique Trader* publication so we can offer trial memberships to all sweepstakes entrants.

Finally, a membership recruiting contest called the Red Ribbon Campaign is open to all current members. Read about it in the box below.

The Membership Committee can’t succeed without your help. Talk to people who are bidding on Red Wing at auctions and encourage them to check out the RWCS. Consider arming yourself with RWCS promotional materials to grow membership. Sell on eBay? Insert the RWCS info business card with your shipment. Visit antique shops? Drop brochures in their racks or ask to put up a 2010 Convention poster. All of these materials can be ordered by calling the business office. ■



**The Red Ribbon Campaign:** Any current member that recruits a new member (who has not been a member in the last 12 mos.) will receive one point. If the new member attends the Convention, the recruiting member receives a second point. The current member with the most points by June 30 will receive a \$200 gift certificate that can be spent at the Thursday Night Auction, Saturday Show & Sale, MidWinter Show & Sale, MidWinter auction, event registration, membership fees or 2011 Commemorative. All other members with points will be entered in a drawing for \$50 to also be spent in the above manner. All recruiters will be recognized at the annual business meeting.

# RWCS FINANCIAL REVIEW

## STATEMENT OF REVENUES ALL SOURCES

FOR THE PERIOD ENDED DEC. 31, 2009

REVENUES	12 MOS. ENDED 12/31/09
ADVERTISING	\$195.00
AUCTION	125,689.08
BANQUET	2,294.00
CATALOG SALES	1,265.00
COMMEMORATIVES	64,580.00
COMMEMORATIVES (MAILED)	65,710.00
DONATIONS	27.88
FACILITIES	572.40
INTEREST	20,116.19
KIDSVIEW	1,576.07
LOTTERY SALES	15,705.00
MAILING FEES	17,810.00
MEMBERSHIPS	86,644.00
MISCELLANEOUS	230.42
NEWSLETTER ADS	2,218.80
PICNIC	4,491.80
PRE-REGISTRATION	41,451.00
REGISTRATION (WALK-IN)	5,981.00
SELLERS' TABLES	7,785.00
SURCHARGE - CC CHARGE	377.25
<b>TOTAL REVENUE</b>	<b>\$464,719.89</b>
<b>EXPENDITURES</b>	<b>\$463,823.75</b>
<b>NET REVENUES</b>	<b>\$896.14</b>

Every Spring, your Board furnishes you with a financial summary such as the one shown on this page. A financial status report is also presented at our annual meeting in July. The financial information shown here is current through Dec. 31, 2009. You can also receive a complete listing of 2009 expenses by contacting the RWCS Business Office.

*-Mark Collins, RWCS Treasurer*



## STATEMENT OF EXPENDITURES ALL SOURCES

FOR THE PERIOD ENDED DEC. 31, 2009

EXPENDITURES	12 MOS. ENDED 12/31/09
ACCOUNTING	\$2,540.00
ADVERTISING	755.50
AUCTIONEER	2,508.70
BANK & CC CARD CHARGES	4,633.20
COMMEMORATIVES	41,352.25
COMMUNITY EVENTS	35.00
COMPUTER & RENTAL	470.00
CONVENTION BANNERS	178.64
CONVENTION SUPPLEMENT	3,208.90
DONATIONS	20,116.19
DUES/SUBSCRIPTIONS	665.00
EDUCATION (STAFF)	400.00
EDUCATION PROGRAMS	7,524.60
EQUIPMENT RENTAL	3,815.20
EXECUTIVE BOARD	35.58
EXPENSE CONTINGENCY	10,000.00
FACILITIES	21,057.17
FULL BOARD	6,282.30
INSURANCE	8,004.72
INTERNET/E-MAIL	468.40
KIDSVIEW	1,476.07
LODGING	225.95
MEALS	196.11
MEMBERSHIP COSTS	953.36
MEMORIALS	221.68
MILEAGE/TRAVEL	2,735.60
NEWSLETTER	79,539.26
NEWSLETTER TRAVEL	990.68
OFFICE SUPPLIES & MISC.	1,358.61
ONLINE MARKETING	546.25
ONLINE MEMBERSHIP	7,902.39
PAID TO OWNERS	113,720.50
PAYROLL TAXES	4,668.20
PETTY CASH	222.77
POSTAGE & SHIPPING	13,634.78
PRINTING (COMMEMORATIVES)	695.78
PRINTING (CONVENTION)	989.83
PUBLICITY/MARKETING	86.47
SALARY (ASSISTANT)	13,016.00
SALARY (BUSINESS MANAGER)	46,909.75
SALARY (STIPENDS)	8,950.00
SAMPLE	3,400.00
SECURITY	3,446.86
SHOW & SALE PRINTING	1,236.79
SIGNAGE	324.43
SOCIAL EVENT	8,481.63
SOCIAL EVENT (BANQUET)	2,224.61
SOCIAL EVENT (PICNIC)	4,076.70
SUPPLIES	772.56
TELEPHONE	2,534.60
TOUR BUS	530.40
VOLUNTEER RECOGNITION	1,804.92
<b>WEB SITE</b>	<b>1,533.86</b>
<b>TOTAL EXPENDITURES</b>	<b>\$463,823.75</b>

## RED WING COLLECTORS SOCIETY – 2010 BUDGET RED WING, MINNESOTA

REVENUES	2009 ACTUAL	2009 BUDGET	2010 BUDGET
GENERAL & ADMINISTRATIVE	\$109,432.29	\$113,080.00	\$87,488.00
CONVENTION	52,447.87	60,714.00	51,775.00
COMMEMORATIVE	163,805.00	167,000.00	163,500.00
AUCTION	127,331.33	137,700.00	131,800.00
MIDWINTER	11,703.40	10,641.30	10,891.30
<b>TOTAL REVENUES</b>	<b>\$464,719.89</b>	<b>489,135.30</b>	<b>445,454.30</b>
<b>EXPENDITURES</b>			
NEWSLETTER	80,529.94	82,378.00	76,681.54
GENERAL & ADMINISTRATIVE	130,956.90	129,874.00	105,610.92
EXPENSE CONTINGENCY	10,000.00	5,000.00	2,500.00
CONVENTION	45,854.74	50,646.00	45,761.00
COMMEMORATIVE	65,287.75	80,250.00	78,310.00
AUCTION	118,417.95	125,700.00	121,450.00
MIDWINTER	12,776.47	13,409.30	12,791.78
<b>TOTAL EXPENDITURES</b>	<b>\$463,823.75</b>	<b>487,257.30</b>	<b>443,105.24</b>
<b>NET REVENUES</b>	<b>\$896.14</b>	<b>\$1,878.00</b>	<b>\$2,349.06</b>

# Shedding some Light on Historic Wabasha Lamp Posts

A quick drive across the Mississippi River on Minnesota State Highway 60 yields an impressive view of the mighty river and its surroundings from a new truss bridge. But years ago, the original bridge that connected Wabasha, Minn. to Nelson, Wis. was lit by gas lights that sat atop colorful clay columns.

Eventually these ornate lamp posts were removed and likely sold to townspeople interested in buying them, as a few are still scattered around Wabasha. Two of those posts flank the driveway of a cabin nestled in the woods that belongs to Susan Spiten Waide.

“The lamp posts were included when I bought the home in August 2006,” she explains. “I guess it was a trade-off for the many repairs the home required, which I planned to fix up and resell. But I quickly fell in love with the area and the rustic cabin, and decided to use it as a vacation property.”

Spiten Waide often wondered where the lamp posts came from. They were so big that she never imagined they were made of pottery. But after mowing the lawn around them on multiple occasions, her curiosity took over.

“I pondered enough to wander into town one day and start asking questions,” she says. “One person told me only about a dozen of the posts existed. A few are still in town and supposedly eight of them are now on a bridge somewhere in Canada. One woman informed me that these were made by the Red Wing Potteries – she remembered when they were put on the bridge.”

Spiten Waide misplaced the name and contact information of her source, so finding this woman and asking her more about the lamp posts hasn’t been possible to date. But the belief that the Red Wing Stoneware Co.

made these lamp posts is a feasible notion, considering Red Wing is only a 30-mile drive northwest of Wabasha. Longtime RWCS member Gary Tefft, however, is not quick to make assumptions.

“Judging from the photos, their multicolor finish looks similar to glazed tile,” says Tefft, who co-authored *Red Wing Potters & Their Wares* with his wife, Bonnie. “To me, that makes the likelihood of Red Wing being their point-of-origin seem unlikely. Glazed architectural terra cotta was popular at the time and other firms were clearly more equipped and readily suited to produce the posts than Red Wing.”

One such manufacturer, Tefft says, was the Gladding, McBean Company of San Francisco, which still exists today. The company began creating clay sewer pipe in 1875, and in 1884 it used its own terra cotta trim when constructing a new office building, which drew lots of interest for its attractive appearance. According to [www.GLADDINGMCBEAN.COM](http://www.GLADDINGMCBEAN.COM), soon the company “became a leader in producing architectural terra cotta facades for some of the most significant historical landmarks in the world.”

Regardless of who manufactured these opulent, yet functional pieces of art, they clearly possess a great deal of historical significance for the Wabasha area and the State of Minnesota as a whole. As much as she has grown to like them, Spiten Waide has decided to sell the lamp posts because they don’t fit with her property’s rustic nature.

“I think they belong in some type of museum or in front of a nice Victorian home,” she says.

Spiten Waide says plans to list the lamp posts on eBay on May 1. She can be reached at 507-458-8567 or [SUSANWAIDE@REALTYAGENT.COM](mailto:SUSANWAIDE@REALTYAGENT.COM). ■

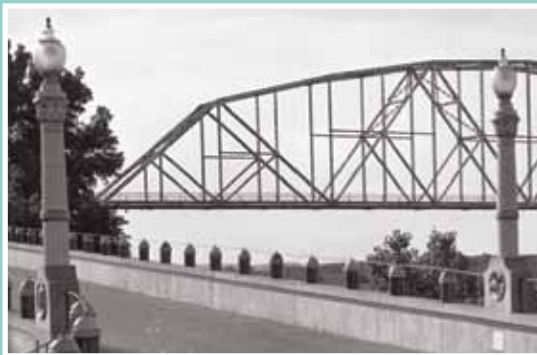


*Left: A few of the beautiful old clay lamp posts remain in Wabasha today. This one, now privately owned, even has the original base with the Indian head on the other side. Photo by Stacy Wegner.*

*Right: The lamp posts as they were positioned on the Mississippi River Bridge in Wabasha, Minn. in 1940. Photo courtesy of the Minnesota Historical Society.*



*Susan Spiten Waide stands beside one of the two lamp posts on her property; hers lack the concrete base like the post on the left side of the page. Note the slightly different coloring scheme on her lamp post vs. the close-ups of the post on the left pictured below.*



## Street lights made by the Red Wing Iron Works Co.

The cast iron light poles that once lined the streets of downtown Red Wing were manufactured by the Red Wing Iron Works Co. in the 1920s. According to Gary Tefft, most were replaced in the 1960s and offered for sale to local residents who used them as yard lights. “They’ve become quite coveted among current Red Wing folk wishing for a striking memento from the history of their city,” Tefft says. “A few of the lamp posts remained in service in locations at the edges of downtown until only a few years ago, when the last one, located at the corner of 3rd Street and West Avenue, was taken down and moved a block north into Central Park, where it now lights the walkway.”



*Left: In this photo taken around 1940, an unidentified worker from the Red Wing Shoe Factory peeks out from behind a lamp post on Red Wing’s Bush Street, looking south across 3rd Street.*

*Right: A foundry pattern used to manufacture the base for the cast iron street lamp poles made for the City of Red Wing. Photos courtesy of Gary & Bonnie Tefft*



# New Ulm's Ruemke Bros. Grocery & Crockery

Story by Denny Johnson, RWCS Member

It was Oct. 5, 2009, and I was trying to decide which auction to go to the following weekend. Five auctions on Oct. 10 listed Red Wing Stoneware pieces that I had an interest in, so I needed to make a decision where I was going to end up come Saturday morning.

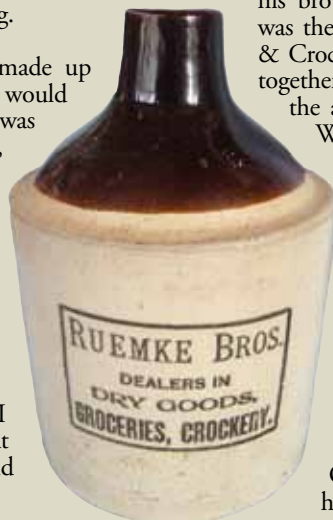
I started going over the auction listings again, and when I started looking at the sale bill for Jim Seeck's auction in Rock Falls, Iowa something kept drawing me to the listing for the Ruemke Bros. ½ gallon jug. There wasn't a town listed on this advertising jug, but it kept ringing in my head that I should know the name. So I kept looking at the sale bill, and about five minutes later it hit me like a ton of bricks! The jug could be from New Ulm, Minn. I remembered reading about the business in Elroy Ubl's book titled *The Matter Lies Deeper*, which consists of a great collection of New Ulm history notes.

I grabbed the book, opened it to the page I had bookmarked, and there it was – Ruemke Grocery & Crockery! Then I remembered that I had a 1909 *Brown County Directory*, so I opened it up and found the Ruemke Bros. General Store listed.

Being an avid stoneware collector, I always thought it would be neat to own something from the Ruemke Grocery & Crockery Store because of the word "Crockery" in the business's name. But I never thought I might find a Red Wing advertising jug from the store. Making it even more desirable for me is that New Ulm is the town where I grew up and I'm a big collector of New Ulm Stoneware in addition to Red Wing.

That was it – I had made up my mind which sale I would attend on Oct 10. I was headed for Rock Falls, Iowa. I needed this jug.

As good fortune would have it, I ended up with the winning bid on the Ruemke Bros. jug that day in Rock Falls. On the 2 ½-hour drive home, I started wondering what other information I could find on this jug.



William Ruemke, Jr. (right) and an employee stand behind the Ruemke Bros. Grocery & Crockery store counter in this undated image. Note the stoneware sitting on the floor on the right side of the photo. What appears to be a 10 gallon Red Wing bail-handled crock is joined by a number of smaller crocks and a small shoulder bowl.

When I arrived home, I read the page in Elroy Ubl's book again. Then I did a Google search and found several different photos of the Ruemke family and photos of the Ruemke Bros. Grocery & Crockery Store. One photo is of the store's interior, with Red Wing crocks sitting on the floor of the store! I also made a trip to the Brown County Historical Society museum to see what I could find.

The first mention of this store is in a newspaper ad from November 16, 1887. It is an ad from Christ F. Ruemke announcing the opening of his new general store at 226 North Minnesota Street in New Ulm. The ad boasts that the store will have a "choice and well selected stock of GROCERIES, CROCKERY, GLASSWARE and NOTIONS". The store actually opened on Nov. 28, 1887. Christ ran the store by himself for a few years and then formed a partnership with William Huevelman sometime in 1890. Ruemke built on to his store in June of 1893, and he added a "Dry Goods" department in July of the same year. Ruemke's partnership with Huevelman was dissolved in 1894. It was at this point that William Ruemke, Jr. joined his brother in running the store. The name was then changed to "Ruemke Bros. Grocery & Crockery". The two brothers ran the store together for the next 19 years. According to the addresses listed in my 1909 directory, William Jr. must have lived upstairs from the store, while Christ lived a block away at 227 North German Street, which was on the opposite side of the block from the store.

Tragically, Christ Ruemke died unexpectedly on April 23, 1915. William Jr. ran the store by himself until 1928. In 1929, he and his family moved to California. William Jr. died on Dec. 25, 1944.

Over the next 53 years, the building was home to a printing business, a furniture

& upholstery shop, and lastly, Roeders Hatchery. The building was razed on July 29, 1981 to make room for a new bank.

As a child, I remember riding my bike into town and stopping to look at the baby chicks at the hatchery. Never in my wildest dreams did I think I would someday be writing an article about the building, much less own an advertising jug from its former occupants.

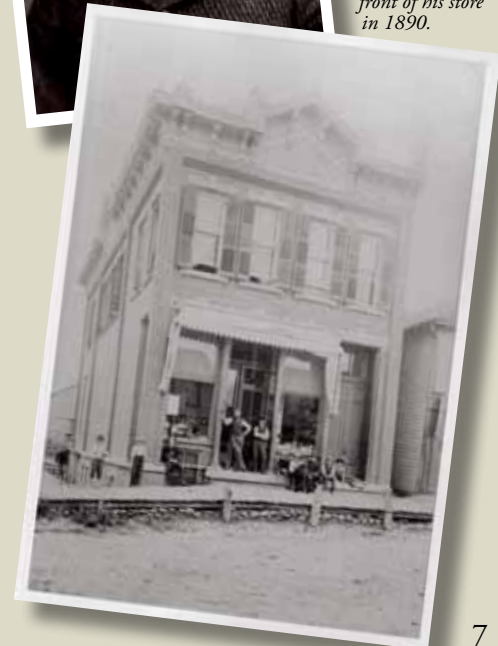
Another thing I have pondered is whether any of my later New Ulm stoneware pieces were sold by the Ruemke Grocery & Crockery Store in its early days. It's very possible....

I have searched for this jug in the *Red Wing Potteries Ledger* book, but have not found it. I have to believe this jug was made prior to 1907. I know of only one other jug like this. If you have one, or know someone who does, please contact newsletter editor Rick Natynski. I am just curious as to how many are out there. Also, if anyone has a 1 gallon jug or a butter crock with this ad on it, I would be interested in buying it. Thank you. ■



Christ Ruemke circa 1900. (These two photos are courtesy of the Minnesota Historical Society.)

Christ Ruemke, standing in the doorway on the left, poses with several New Ulm youth in front of his store in 1890.





# Midwest 2010 Fiesta

Red Wine  
Collector





# Winter Flower in February!



... Society Inc.  
February 2011



# Red Wing's Concord Line

© Copyright 2010 Terry Moe and Larry Roschen

PART 1 OF 2

The information presented here has been gleaned from vintage Red Wing brochures, catalogs, price lists and internal documents as well as trade journals and magazines. In this discussion, a "pattern" is a dinnerware set in a particular shape with a unique handpainted design or color scheme. A "line" is a group of patterns that share the same shapes but have different handpainted designs or colors. Some of the introduction and exit dates presented have not been verified because of gaps in available documentation. When uncertain, an estimated date is provided. The end point of a pattern can be difficult to ascertain. In the 1940s and 1950s a discontinued pattern no longer appeared on price lists; in the 1960s patterns that were no longer in production remained on price lists as "limited stock" with only a few pieces listed. Here, a pattern is considered to be discontinued when a full range of items was no longer available and orders were limited to remaining stock.

Each pattern has been assigned an Availability rating and a Collector Interest rating as described below. Availability represents an average for the pattern in question, however the scarcity of certain pieces within the pattern may differ. Collector Interest refers to the pattern in general, but there may be specific pieces in any pattern that are of greater interest to specialty collectors (teapots, pitchers, salt & peppers, etc). Please keep in mind these ratings are the authors' observations; your experience may vary.

### Availability

- 1 - Rare
- 2 - Very scarce
- 3 - Hard to find
- 4 - Average
- 5 - Readily available

### Collector Interest

- 1 - Highly sought, demand exceeds supply
- 2 - Primarily of interest to specialty collectors
- 3 - Above average
- 4 - Average
- 5 - Below average

Red Wing introduced the Concord shape in 1941. A total of 17 to 20 Concord patterns were introduced between 1941 and 1957; the number depends on whether you consider color variations to be distinct patterns. The patterns introduced in 1941, 1952 and 1955 had hollow ware decorated to match the flatware; patterns introduced in other years were glazed in solid colors that were usually shared with other patterns. A 1942 price list showed that covers were initially considered optional for the Provincial and Concord lines. Sugar bowls, cream soup bowls and casseroles could be purchased either with or without a cover. Also, new pieces not made for the 1941 introduction were added later to both lines. For example, the covered beverage server was added in 1949. By this time, Orleans and Brittany were being phased out and Harvest had been discontinued, thus no beverage servers in those patterns were ever made. New items such as the celery, relish and butter dishes, spoon rest, divided vegetable, egg plate, supper trays and gravy boat were added to the Concord line in the late 1940s and early 1950s. These items can be difficult to find in the Lexington pattern because they were not made until nearly the end of Lexington production, and they were never made in the Harvest pattern.

### Harvest

Availability: 2 Interest: 1  
Years: 1941 - mid 1940s

The Harvest pattern was decorated with fruit and a yellow/gray border on a white background. Cherries, grapes, a pear and an apple were included on all pieces in varying combinations, depending on the piece. The dinner plate and chop plate (platter) also featured a pineapple. Some items had the fruit in a compote bowl while others did not. Harvest did not sell well and was discontinued by 1946 or earlier.



### Lexington Availability: 5 Interest: 4 Years: 1941 - 1955



Lexington (often called Lexington Rose) was also introduced in 1941 and featured a large red rose on a white background on all pieces. A lighter shade of red was used on early pieces of Lexington; by the 1950s the color darkened considerably. Lexington was the only Concord pattern with chop plates (platters) made in two sizes. The original 1941 version was 14" x 10.5"; the size changed to 13" x 10.5" when new Concord patterns were introduced in the late 1940s.

### Magnolia Availability: 5 Interest: 4 Years: 1947 (?) - 1956



### Lotus

Availability: 5  
Interest: 4  
Years: 1947 (?) - 1957



By the late 1940s, Gypsy Trail and the cook set lines were phased out. Soldiers returned home to start families, and Red Wing's attention moved to providing them with new dinnerware patterns. The Concord line now expanded to add Lotus, Magnolia, Chrysanthemum and Morning Glory (pink) to the existing Lexington pattern. Flatware for these new patterns had white backgrounds hand-decorated with their

### Chrysanthemum

Availability: 3 Interest: 5 Years: 1947 (?) - 1953



namesake flower. But the exteriors of the hollow ware for these new patterns were glazed in solid colors, not hand painted with the same decorations as the flatware as had been done with Harvest and Lexington. Only the covers featured a portion of the pattern's hand-painted decoration. A July 1949 price list showed Metallic Brown, Chartreuse and Gray as the three available exterior colors for all four patterns. While not listed in the dinnerware brochures, vases and planters decorated to match Lotus and Magnolia dinnerware were introduced in 1952. The covered beverage server, gravy boat and 13" x 10.5" chop plate were added to the Concord line during this period.

### Blossom Time Availability: 4 Interest: 4 Years: 1950 - 1955

### Morning Glory Blue Availability: 2 Interest: 4 Years: 1950 - 1951



By October 1950, Blossom Time was added and Morning Glory was now available in two versions (pink or blue flowers). Blossom Time featured red rose blooms along with green leaves, and it was the third Concord pattern for which matching vases and planters were made. Three new exterior colors (Sunlight Yellow, Dark Gray and Forest Green) were available. Red Wing brochures and catalogs recommended certain exterior colors for use with each pattern, but the final decision was up to the customer. The rim soup bowl was added to the Concord line in 1950.

Photos courtesy of the authors and [WWW.REDWINGDINNERWARE.COM](http://WWW.REDWINGDINNERWARE.COM).



The remaining patterns in the Concord Line will be featured in the June issue of the RWCS Newsletter.



## MANAGER CONVENTION UPDATES



**BOB MORAWSKI**  
Commemorative Manager

With Convention fast approaching, I wanted to remind everyone about a few key points regarding the 2010 Commemorative. We will once again have three versions of the Commemorative this year. While I received a small amount of comments from people who did not like the three versions, I personally received an overwhelming amount of positive comments and feedback from members indicating they wanted the three versions to continue. Whether you pick up your Commemorative at Convention or have it mailed, you have the same chance of receiving any version. The production break down is 90 percent of all

pieces made will be version "A", 9 percent will be version "B" and version "C" will be 34 pieces to match the RWCS anniversary.

The Thursday Night Auction will include three sets of 2009 Commemoratives consisting of a version "A," "B" and "C" in each set. The auction will also include a single piece that has all three versions on it. We will once again have a silent auction in the Commemorative room, as well. The auction will include a set of all three 2010 versions, the Special Commemorative from 2010 and a couple of other surprises. Bidding on these pieces will end at 10 a.m. on the Saturday of Convention.



**TODD AVERY**  
Auction Manager

Spring is in the air here in Red Wing. In a few short months the auctioneer will sing his song and we'll be enjoying another Red Wing Collectors Society Auction. My postal carrier has already been getting a workout from auction form deliveries. We are seeing some great pieces being submitted for this year's event.

I hope everyone gets a chance to submit a piece (or two) for your auction. It was fun to see some of the incredible pieces

we had last year. We always enjoy the top end pieces, but it's the regular stoneware, dinnerware, art pottery and related items that make it a great auction for everyone.

This coming year we will do our best to make it a great event. We have added the option of submitting a second item into the auction. I never want to make the auction too big or last too long, but we had room last year and decided this would be a fair way to expand our offerings.

I'm looking forward to seeing you all in Red Wing this summer and wishing you a safe and memorable visit. And remember, get those auction forms sent in by May 15!

# RWCS BOARD OF DIRECTORS ELECTION BIOS

There are seven positions up for election on the RWCS Board of Directors in 2010. Candidate bios ran in the February issue of the *RWCS Newsletter*, but another candidate has since put her name in the hat for the vice president position, so both VP candidate bios are included here. In addition to Ann Busse Tucker and Diana Bailey running for VP, the following people are running in the election: Dan DePasquale, President; Mark Collins, Treasurer; Russa Robinson, Rep. at Large; Jerry Erdmann, Rep. at Large; John Sagat, Secretary; Steve Brown, Historian. Your election ballot is enclosed with your newsletter and must be received by the RWCS Business Office no later than June 30, 2010. Associate members must request a ballot by contacting the RWCS Business Office.



**ANN BUSSE TUCKER**  
*Candidate, RWCS Vice President*

I joined RWCS in 1986 after randomly wandering into the Red Wing VoTech during the Summer Convention. After learning about the stoneware auction taking place there, I arrived a day early and joined the Society after meeting several RWCS members. I have stayed involved in the organization in a variety of ways ever

since. Some members will remember when I first served on the Board of Directors as Secretary from 1988 to 1998. As Secretary I worked with presidents Dan DePasquale, Dennis Yaeggi and Barney Olson. I have assisted with KidsView since leaving the Board, and like so many members, I've enjoyed the annual visit to Red Wing to see people who have become my Red Wing family over the years.

In May 2009, I retired from Kishwaukee College as Dean of Arts and Science. When I was asked to run for RWCS Vice President, I did not hesitate. I realized this organization has given me so much personally as well as through the collections I've bought and sold through the years; it was time to get involved again. I look forward to working with the Board and members of RWCS.

My previous terms on the RWCS Board were filled with growing pains as the membership and Convention grew annually. I look forward to the opportunity to continue to move RWCS forward and at the same time keep that "family" atmosphere of collectors and friends. It is not just a business of buying and selling stoneware. Our mission is to keep the legacy alive. That's why I'm dedicated to the current and future members of RWCS, the Board and its Foundation.

Along with RWCS, I am president of the Kishwaukee Symphony Orchestra, President of Oak Crest; the DeKalb Area Retirement Center (I serve on the Board, not as a resident); and am a commissioner for the Sycamore Park District. I live in Sycamore, Ill. with my husband, Jim, and we run Sycamore Antiques in downtown Sycamore. In our spare time we like to golf, sail and generally hunt for Red Wing and other antiques. Thank you for your support. I will serve the membership and the organization with all the knowledge I can bring and all the love I have for RWCS.



**DIANA BAILEY**  
*Candidate, RWCS Vice President*

I joined RWCS in 1999 after a trip through Red Wing which brought me to Pottery Place, and my first exposure to Red Wing stoneware and pottery. I attended my first Convention in 2000, where I attended as many of the activities as possible.

I became RWCS Education Manager in 2004, but served only one year of my term.

Professional commitments requiring a great deal of travel prevented me from continuing in that role. During my brief tenure, I had the opportunity to meet many wonderful and committed members who were willing to share their time and collecting expertise with others.

Although my position as Account Manager for my employer continues, I no longer need to spend as much time traveling. I am joining the race for candidacy for Vice President of RWCS because I am committed to the organization's efforts to expand membership and to encourage member involvement in the leadership of the RWCS, and I strongly believe RWCS members should have the opportunity to choose among candidates for Board of Director positions.

## CHAPTER EVENTS

**Wolverine Chapter:** Noon on Saturday, April 24 at the home of Candy & Gary Hirschlieb in Lapeer, Mich. An always yummy potluck lunch will be followed by the meeting. Visitors are welcome to join the group to meet new Red Wing friends and enjoy the stories of the search for that special Red Wing piece. For directions and further information, contact Charlotte Ackerman at [CHARDAVE@CHARTER.NET](mailto:CHARDAVE@CHARTER.NET) or 989-832-2527.

**Trails West Chapter:** Noon, Saturday, April. 24 at the home of Ray & Barb Pritchard in Marshall, Mo. Contact Jerry Mounts at 816-510-2248 or [JERRY@PRESSUREMOUNTS.COM](mailto:JERRY@PRESSUREMOUNTS.COM) for more information.

## Red Wing Collectors Society Convention July 8, 9 & 10, 2010

Now is your opportunity to advertise in the 34th Annual RWCS Convention Supplement publication. 7200 copies will be distributed at the Convention site and attendees will carry them back to their homes all across the U.S. They will be inserted in the Red Wing newspaper and RWCS also distributes them with every new member packet and at their Red Wing office.

**Space & copy deadline is Friday, June 11.**



For more information contact a sales representative...

**Joni Juliar**

[jjuliar@republican-eagle.com](mailto:jjuliar@republican-eagle.com)  
651-301-7853

**Nancy Knudsen**

[nknudsen@republican-eagle.com](mailto:nknudsen@republican-eagle.com)  
651-301-7854

**Lisa Woletz**

[lwoletz@republican-eagle.com](mailto:lwoletz@republican-eagle.com)  
651-301-7857



**W. YODER AUCTIONS PRESENTS:**  
**QUALITY**  
**STONEWARE AUCTION**  
**Selling the Richard Ellis**  
**Red Wing Collection in its entirety**



**Saturday May 15, 2010**

Inspection at 10 a.m. to 5 p.m. May 14, 2010

Auction 9 a.m., May 15, 2010



Location: DeForest Comfort Inn located at 5025 County Hwy. V in DeForest, Wisconsin. (Coming from Madison, Wis. take 90/94 W to Hwy V)

**This is the premier Red Wing auction of the past two decades** featuring items you have only dreamed of owning until now. Included in this auction are a Director's Jug, the Van Deuson Jug, 1915 Excursion Jug, Red Wing Bulldog with Rider and Black and White Cow/Calf pair. Also included in this auction are Monmouth Pottery and Animal Figurines as well as Fort Dodge Pottery, with a total of approximately 400 lots. This is just small sampling of the unique and rare items in this auction. There's something for every level of collector. Catalogs are now available for \$22.00.

Terms: Cash, WI Checks Only (or with prior approval), Visa, MasterCard. - I.D. required to register - 13% Buyers fee. 3% discount for check or cash. 5.5% sales tax. All sales final with no warranties. Announcements sale day supersede this and printed material.

Not responsible for accidents. Lunch on grounds!

**Wayne Yoder - Registered Wisconsin Auctioneer #1977**

N2475 13th Gateway \* Wautoma, WI. 54982

Phone 920-787-5549\* Cell 920-295-2644

\*For more info and updates visit: [www.wyoderauction.com](http://www.wyoderauction.com)\*

Attend, Phone bid, Absentee bid, or BID LIVE ONLINE

[www.wyoderauction.com](http://www.wyoderauction.com)



Classified ads are 20¢ per word; \$4 minimum charge and are accepted on a first-come, first-served basis. In addition to appearing in the newsletter, classifieds and display ads are posted on the RWCS website.

Ads are divided into the following sections: Red Wing For Sale, Red Wing Wanted, Other Pottery For Sale, Other Pottery Wanted, Events, Auctions, Clubs & Publications and Websites, Announcements and Services. You will not be charged for these words, but please indicate which section your ad should be placed in. If ad is to run in more than one issue, please indicate at time of placement. (Note: the small number at the end of an ad tells when the ad expires, e.g., 12/09. Ads without dates are one-time ads.) Please type or print clearly and proofread before submission.

### DISPLAY ADS

Display Ad Size	1x	6x
Full page	\$425	385
1/2 page ( <i>horizontal or vertical</i> )	225	205
1/4 page	125	115
1/8 page	85	70

### Display Ad Dimensions

Full Page	7 1/2 x 10
1/2 page ( <i>horizontal or vertical</i> )	7 1/2 x 4 7/8
1/4 page	3 5/8 x 4 7/8
1/8 page	3 5/8 x 2 1/4

Display ads are accepted on a first-come, first-served basis. The publisher reserves the right to refuse ads for any reason.

Ads must be supplied electronically as an EPS or PDF file for PC. If you are unsure about acceptability, inquire with the editor. There is an additional 10 percent fee for design and makeup if needed.

### DEADLINES

Issue	Ads	Editorial	Mail Date
February	Jan. 10	Jan. 1	Feb. 15
April	March 10	March 1	April 15
June	May 10	May 1	June 15
August	July 25	July 15	Aug. 31
October	Sept. 10	Sept. 1	Oct. 15
December	Nov. 10	Nov. 1	Dec. 15

### EDITOR ADDRESS

Make checks payable to RWCS and mail with ads to:

**NOTE:** New Address Rick Natynski  
as of Feb. 2009 PO Box 198  
Pewaukee, WI 53072

Or e-mail ads to [NEWSLETTER@REDWINGCOLLECTORS.ORG](mailto:NEWSLETTER@REDWINGCOLLECTORS.ORG) with checks sent separately. Or, call Rick at 414-416-WING (9464).

### RED WING FOR SALE

Handles and wooden lids. Send SASE for flyer to Larsen's Collectibles, 757 120th Street, Hampton, Iowa 50441-7555. Phone 641-866-6733. 8/10

Motivated seller selling 1984-2007 Red Wing Collectors Society Commemoratives as a set. Best offer accepted!! Please call 507-236-3115 for more information.

1949 PINK Plum Blossom dinnerware for six: large plates, 6.5" plates, 7.5" plates, sauce bowls, rimmed soups, cups with saucers, sugar and creamer, salt and pepper, and platter. All are well-marked, no chips, no cracks. \$525.00 Contact Ron Linde at [RONLINDE@LAKES.COM](mailto:RONLINDE@LAKES.COM) or 952-922-9169.

Lots and lots of stoneware for sale, from very rare to common. We're the Carter's, stoneware collectors for many years. We are now downsizing. Salt glaze and zinc: crocks, jugs, churns, ice and water coolers, beater jars, bowls, all types of advertising and full set of commemoratives. Way too many pieces to list. We also have lots of Old Sleepy Eye items. Please contact us with your want list of items. We probably have it. 641-673-4781, 641-670-1914 (cell), Jimmy & Becky Carter, PO Box 725, Oskaloosa, IA 52577 or [JJCARTER47@MCHSI.COM](mailto:JJCARTER47@MCHSI.COM). 8/10

Dinnerware patterns: Adobestone (about 18 pieces), Ebb Tide (about 26 pieces), Bob White (about 30 pieces). Also misc. saucers & plates of other patterns. Contact Lore at [LLMAAS1@YAHOO.COM](mailto:LLMAAS1@YAHOO.COM) or 507-457-0039.

Commemoratives: 1981, \$450; 1982, \$575; 1984, \$350; 1988, \$95; 1989, \$240; 1990, \$70; 1991, \$95; 1992, \$45; 1993, \$80; 1994, \$60; 1995, \$60; 1996, \$85; 1997, \$85; 1998, \$85; 1999, \$50; 2000, \$75; 2001, \$75; 2002, \$75; 2003, \$65; 2004, \$70; 2005, \$85; 2007, \$85; 2008, \$85; 2009, \$85. Call evenings: 320-253-2696.

Mini jugs: 1915 S.M.M.A. "Prescription", \$2,500; RWCo Albany slip "scratch", \$2,500; Anti-Flu League (1918?), \$2,200; Merrell, Greer, Chapman – two with black printing, one with blue printing, \$550 each. All in excellent condition. Call Wayne or Sue at 952-443-2518. (6/10)

13 Commemoratives (1990-2002) plus "Collecting the Legacy" book. Have boxes for 1998, 1999, 2001 and 2002. All for \$975 plus shipping. Contact [JSSETAKS@AOL.COM](mailto:JSSETAKS@AOL.COM) or 503-652-2765. Portland, OR.

### OTHER POTTERY FOR SALE

Artists In The Park now has a beautiful display in Red Wing. Stop in at Pottery Place Antiques, 2000 Old W. Main \* 2nd Floor \* and see some of our new special editions. 6/10

### RED WING WANTED

Wanted: Knapp, Wis. advertising. Want to learn of the existence of any advertising pieces even if not for sale. To sell or share information contact Tim at 715-263-2118 or [TWYSS@CLEARLAKE.k12.wi.us](mailto:TWYSS@CLEARLAKE.k12.wi.us). 6/10

Wanted: Blue sponged panel bowls in 5- and 12-inch sizes. Contact Wayne at 952-443-2518 or [PILLROLR@PRO-NS.NET](mailto:PILLROLR@PRO-NS.NET). 4/11

Wanted: Spongeband pitcher with Wm. Reid, Castlewood, SD advertising or any other Red Wing items from Castlewood, SD or Watertown, SD. Please contact Donna at [SCHMIT@ITCTEL.COM](mailto:SCHMIT@ITCTEL.COM) or 605-793-2449. 4/10

Wanted: Advertising crocks, jugs & churns from NE, ND, SD, KS & others – especially pieces that have a wing, birchleaves or Elephant Ears with the advertising. Willing to pay top \$ for the right piece. Contact Scott at [COBE142@AOL.COM](mailto:COBE142@AOL.COM) or 402-331-4749.

Wanted: Red Wing advertising jugs from Vancouver and Victoria, British Columbia. Contact Rick at [NEWSLETTER@REDWINGCOLLECTORS.ORG](mailto:NEWSLETTER@REDWINGCOLLECTORS.ORG) or 414-416-9464.

### CLUBS AND PUBLICATIONS

2009 values for *Red Wing Stoneware* for \$12.95 and 2008 values for *Red Wing Collectibles* for \$9.95 or \$19.95 for both plus \$2/\$2.50 postage, respectively. Gail Peck, 2504 E. 21<sup>st</sup>, Fremont, NE 68025; 402-721-5721. 12/10

Blue & White Pottery Club – Visit the club's website for membership form at [WWW.BLUEANDWHITEPOTTERY.ORG](http://WWW.BLUEANDWHITEPOTTERY.ORG). Annual membership is \$15 for first member, \$5 each additional member and \$1 for members under 12 years old.

Collectors of Illinois Pottery & Stoneware – Visit the club's website at [WWW.COIPS.ORG](http://WWW.COIPS.ORG) for membership form. Annual membership is \$20 for the first member of the household and \$5 for each additional member.

McCoy Pottery Collectors Society – For full details, see the club's website at [WWW.MCCOYPOTTERYCOLLECTORSSOCIETY.ORG](http://WWW.MCCOYPOTTERYCOLLECTORSSOCIETY.ORG).

**CALIFORNIA AUCTIONEERS**  
COLLECTION OF OVER 50 RED WING CROCKS  
8597 VENTURA AVE, VENTURA CA 93001  
SUNDAY MAY 2ND - IOAM



LEAVE ABSENTE BIDS  
ON OUR CATALOG OR  
BID LIVE WITH ARTFACT

**Artfact** LIVE

(805) 649-2686 **SINCE 1964**  
[WWW.CALAUCTIONEERS.COM](http://WWW.CALAUCTIONEERS.COM)

# HUGE STONEWARE AUCTION

## 600+ PIECES!

Sale: 11 a.m. Saturday, May 8  
Viewing: 4 p.m. to 8 p.m. Friday, May 7

Sioux City Convention Center - 801 4th Street - Sioux City, Iowa 51101

WWW.TYQUADEAUCTIONS.COM

This is a very large ONE person collection - too many items to list. Please come and spend the day with us!!

Owner: Jackie Hoffman Hughes  
Quade and Kavanaugh Auction Co.  
Ty Quade & James Kavanaugh  
712-239-1432 402-981-5082

TERMS: CASH OR AUCTION STAFF-  
APPROVED CHECK WITH PICTURE ID

### Area hotels:

HOLIDAY INN DOWNTOWN  
701 Gordon Drive, Sioux City, IA 51101  
Phone: 712-277-9400 Fax: 712-258-2074

CLARION HOTEL & CONFERENCE CENTER  
707 4th St., Sioux City, IA 51101  
Phone: 712-277-4101 Fax: 712-277-3168

RW 25 gal. crock - Large Wing  
RW 15 gal. crock - Large Wing  
RW 5 gal. crock - Small Wing  
RW 5 gal. jug - Small Wing  
RW 5 gal. jug - Small Wing  
RW 3 gal. churn - Large Wing and Lid  
RW 2 gal. churn - Large Wing  
RW 3 gal. crock - Large Wing  
RW 10 gal. crock - Small Wing No Oval  
RW 10 gal. crock - Large Wing  
RW 10 gal. crock - Large Wing  
RW 5 gal. crock - Large Wing  
RW 4 gal. crock - Small Wing  
RW 5 gal. jug - Beehive Large Wing Only  
RW 5 gal. jug - Large Wing  
RW 4 gal. jug - Large Wing  
RW 3 gal. jug - Large Wing  
RW 6 gal. crock - Large Wing  
RW 3 gal. crock - Small Wing  
RW 2 gal. crock - Small Wing  
RW 3 gal. jug - Small Wing  
RW 5 gal. churn - Large Wing  
RW 6 gal. churn - Large Wing  
RW 12 gal. crock - Small Wing  
RW 15 gal. crock - Large Wing  
RW 25 gal. crock - Large Wing  
RW 8 gal. crock - Large Wing  
RW 6 gal. crock - Small Wing  
RW 6 gal. crock - Large Wing  
RW 5 gal. crock - Large Wing  
RW 4 gal. crock - Large Wing  
RW 4 gal. Water Cooler - Small Wing  
RW 2 gal. crock - Large Wing  
RW 6 gal. Water Cooler - Large Wing  
RW HEALTH WELL  
RW 5 gal. churn - Small Wing  
RW 1/2 gal. BR&WT Bailed Bean Pot  
RW 15 gal. crock - Large Wing  
RW 1 gal. jug Brown Top - Small Wing  
RW 5 gal. jug No Oval Wing only  
RW 15 gal. crock - Large Wing  
RW 3 gal. Ball Lock Jar - Small Wing  
RW 4 gal. jug - Small Wing  
RW 1/2 gal jug Brown Top Wing only

RW 8 gal. crock  
RW 1 gal. Chicken Feeder Eureka pat 4/7/85  
RW 6 gal. crock - Large Wing  
RW 1 gal. Bean Pot - With Lid  
RW 1 gal. KO-REC feeder With Base  
RW 30 gal. crock - Large Wing  
RW 2 gal. crock - Large Wing  
RW 2 gal. crock - Large Wing  
RW 10 gal. crock - Large Wing  
RW 4 gal. jug - Large Wing  
RW 30 gal. crock - Large Wing  
RW 3 gal. Ball Lock Jar - Small Wing  
RW 5 gal. jug No Oval - Large Wing  
RW 1/2 gal. Chicken Feeder EUREKA  
RW 6 gal. crock - Large Wing  
RW 1 QT Bean Pot  
RW 7 INCH Sponge Bowl  
RW 7 INCH Sponge Bowl  
RW 3 gal. Churn - Large Wing  
RW 1 gal. jug Brown Top - Wing Only  
RW 1/2 gal. Bean Pot  
RW 3 gal. crock No Oval  
RW 2 gal. crock No Oval  
RW 2 gal. churn - Large Wing  
RW 6 gal. crock - Large Wing  
RW 3 gal. churn - Large Wing  
RW 5 gal. crock Round Oval - Small Wing  
RW 5 gal. KoverWate  
RW 4 gal. crock Round Oval - Small Wing  
RW 2 gal. crock - Small Wing  
RW 2 gal. churn - Small Wing  
RW 5 gal. jug Round Oval - Small Wing  
RW 3 gal. jug Round Oval - Small Wing  
RW 6 gal. crock Round Oval  
Union 20 gal. Crock Double Birchleaf  
Union 25 gal. Crock Double Birchleaf  
Union 6 gal. Crock Elephant Ear  
Union 10 gal. Crock Oval says RW  
Union 2 gal. Crock Oval says RW  
Union 3 gal. Crock Elephant Ear  
Union 3 gal. Crock Elephant Ear BM  
Union 1/2 gal. Stone Mason Fruit Jar  
3 gal. Elephant Ear Crock Bottom Marked  
4 gal. Churn Elephant Ear

Union 3 gal. Churn No Oval  
Union 6 gal. Churn With Lid  
Union 10 gal. Crock No Oval  
Union 2 gal. Crock Elephant Ear No Oval  
Union 4 gal. Crock Black Stamp Oval  
Union 4 gal. Crock No Oval Black Stamp  
Union 10 gal. Crock Oval says RW  
Union 2 gal. Crock No Oval  
Union 2 gal. Churn Oval Says RW  
Union 5 gal. Bee Hive Jug - Hand Turned  
Union 6 gal. Churn - Hand Turned  
RW 2 gal. Churn - Small Wing  
RW 30 gal. Crock  
RW 15 gal. Crock - Small Wing  
RW 2 gal. Churn - Small Wing  
RW Potteries 10 gal. Crock - Large Wing  
RW Potteries 15 gal. Crock Bung  
RW 3 gal. Jug Oval says Potteries  
Min. Stoneware 2 gal. Snuff Jar  
Min. Stoneware 1 gal. Crock - Saltglaze  
Min. Stoneware 1/2 gal. Snuff Jar  
Min. Stoneware 1/2 gal. Widemouth Jug  
Min. Stoneware 1 gal. Crock - Hand Turned  
Min. Stoneware 1 gal. Brown Wax Seal Jar  
Min. Stoneware 1 gal. Crock  
Min. Stoneware 1/2 gal. Brown Snuff Jar  
Min. Stoneware 1/2 gal. Brown Jug  
Min. Stoneware 1 gal. Brown Jug  
Min. Stoneware 1 gal. White Snuff Jar  
Min. Stoneware 1 gal. White Syrup Jug  
Min. Stoneware 1 gal. White Jug  
Min. Stoneware 1/2 gal. Brown Jug  
Min. Stoneware 1 LB Low White Butter Jar  
Min. Stoneware 1 gal. Jug Brown Top -SG  
Min. Stoneware 1/2 gal. Jug Brown Top SG  
Min. Stoneware 1 gal. Jug Brown Top - SG  
Min. Stoneware 1 gal. White Snuff Jar  
Min. Stoneware 1 gal. Brown Snuff Jar  
Min. Stoneware 1/2 gal. White Snuff Jar  
Min. Stoneware 1 QT White Butter Crock  
Several Stoneware Pitchers w/ Grape Patterns - Star on Bottom  
**PLUS MUCH, MUCH MORE!**



A sale that you will not want to miss!

# WHAT'S NEW AT YOUR MUSEUM? Story by Katie Hardyman, RWCS Foundation Staff

Hello, everyone! There have been some exciting changes already in 2010 at your RWCS Foundation including the addition of your first staff person...me! I will continue to work for Stacy in the Business Office about 10 hours a week, but now I'm working for the RWCS Foundation part time, too. My main responsibilities are strategic planning for the Foundation, grant writing and also beginning the process of creating an electronic database that will list all pieces in the museum.

I appreciate the flexibility of my position as family is always my main priority. I have two boys, Evan (14) and Seth (11) who just finished hockey and are now starting golf and baseball. My husband, Doug Morem, is the Goodhue County Building Official. Did I mention I'm still working at the Red Wing Golf Club, too? It's never a dull moment in my world, but I love it! Here are a few things that I've learned about the RWCS Foundation and museum:

1. If you are a member of the RWCS, you are a member of the Foundation and museum.
2. The purpose for the Foundation is to preserve the history of the clay industry for future generations and to encourage collecting while educating the public about all areas of Red Wing pottery.
3. The Foundation does not buy items for the museum. Any item owned by the museum has been donated.
4. Most of the museum pieces are on loan from members for one year, so there is always something new to see!
5. The museum has been in operation for nearly 10 years, supported solely on donations and volunteer labor.

6. The Foundation was formed because the RWCS opted to gift their interest income to a 501(c)3 organization. Discussions and much effort led to the formation of the Red Wing Collectors Society Foundation.

7. The museum is your museum.

8. We have had visitors from more than 20 states and eight countries, impressing visitors from Canada, France, Germany, Israel, Japan, the Netherlands, Sweden and Ukraine – amazing!!! Here are some of their comments:

- "I found another side of USA – an old traditional town." – from Ibanaki, Japan
- "WOW! What an education." – Omar & Lori, Rochester, MN
- "Very, very impressive – Thank you so much." – Elizabeth & Thomas, Indianapolis
- "Old relatives dug clay in Claybank." – Ingrid, Sweden
- "2nd time here – cool stuff." – Dana, San Jose, CA
- "We'll go home and look at our crocks!" – Sue & Katy, St. Louis, MO
- "Didn't realize the variety in pottery." – Margaret, Mt. Vernon, IA

We can all be proud of the positive global presence our museum has achieved.

Diane and Dave Hallstrom set me up with an office at their store in downtown Red Wing – who wouldn't want to work in a flower shop? My first order of business was to try my hand at grant writing. I wrote one to the State of Minnesota and one to a small foundation in Rochester. We have already been awarded the grant from Rochester, and are anxiously waiting to hear from the State! I now have a laptop that I can take with me to the museum, a color laser printer and the upgraded version of Past Perfect – software



*Katie Hardyman poses with her new laptop.*

specifically designed to meet museum-type requirements. It was so exciting to get such immediate results and it was very gratifying to know that others believe in our vision.

I am looking forward to meeting with the Foundation Board this month to finally put some names with faces. It is truly a passionate group who cares so much about the future of the RWCS, the museum and the legacy of the potteries of Red Wing.

On behalf of the Foundation, I'd like to thank the RWCS Board for the generous donation again this year from the Society interest income! It is always much appreciated.

You can always contact me at [RWCSFOUNDATION@GMAIL.COM](mailto:RWCSFOUNDATION@GMAIL.COM) with any comments or questions. If you have some time on your hands and would like to volunteer, I can always use help in the museum. I look forward to seeing you at Convention if not before! ■

## COMING IN THE JUNE ISSUE...

### CONVENTION PREVIEW

