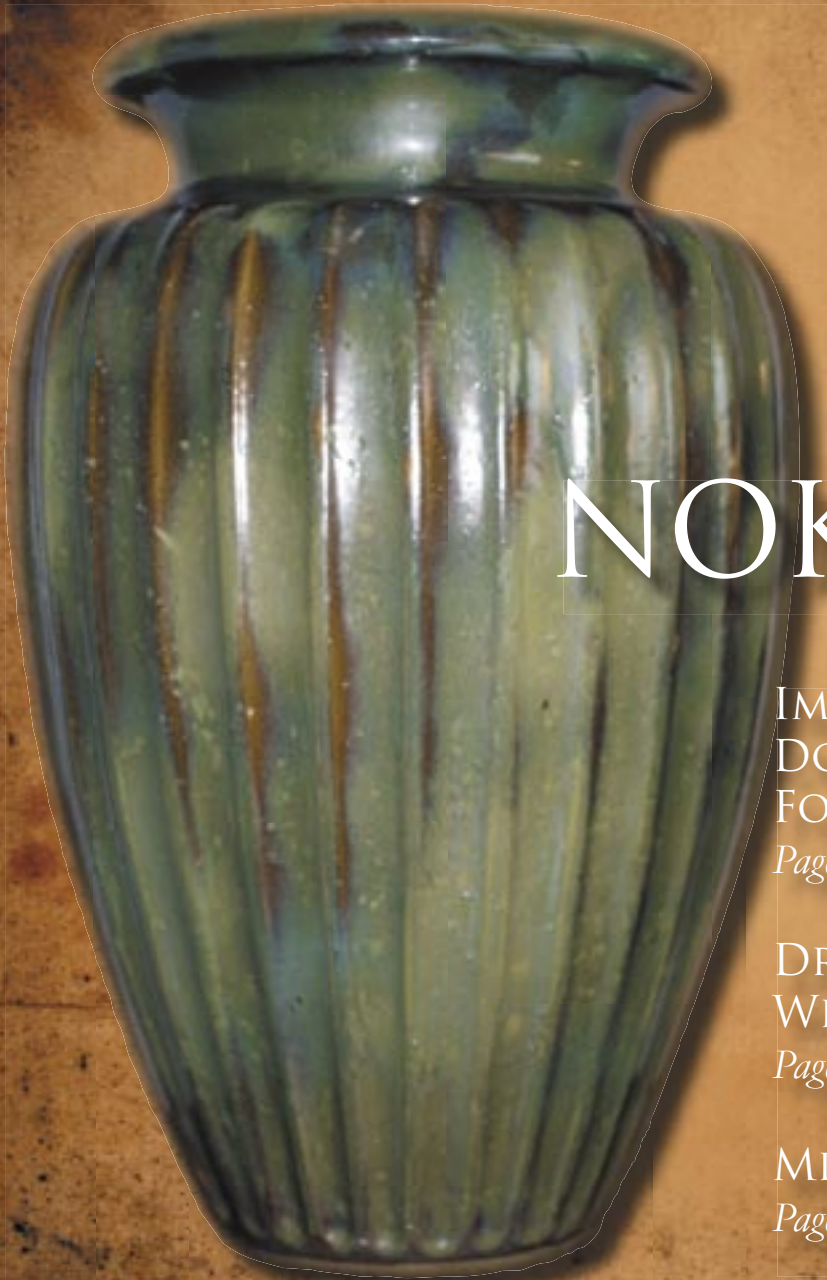




VOL. 31 NO. 2

N E W S L E T T E R

APRIL 2006



NOKOMIS

Page 10

IMPORTANT COLLECTION
DONATED TO RWCS
FOUNDATION

Page 5

DROOLING OVER RED
WING SPITTOONS

Page 7

MIDWINTER PHOTOS

Page 8

RWCS CONTACTS

RWCS BUSINESS OFFICE

PO Box 50 • 2000 Old West Main St. • Suite 300
Pottery Place Mall • Red Wing, MN 55066-0050
651-388-4004 or 800-977-7927 • Fax: 651-388-4042
BUSINESS/CONVENTION MANAGER: STACY WEGNER
rwcs1@redwing.net

ADMINISTRATIVE ASSISTANT: LORI ANDERSON
rwsmem@redwing.net
Web site: www.redwingcollectors.org

BOARD OF DIRECTORS

INTERIM PRESIDENT: SUE JONES TAGLIAPIETRA
2219 Lakeland Ave. • Madison, WI 53704-5636
608-241-3072 • rwcsjst@yahoo.com

VICE PRESIDENT: WENDY CALLICOAT
3946 Five Mile Rd. • Seneca, MO 64865
417-850-4079 • crocks701@aol.com

INTERIM SECRETARY: PAULETTE FLOYD
208 E. Somonauk • Yorkville, IL 60560
630-553-9234 • jfloyd5762@aol.com

INTERIM TREASURER: MARK COLLINS
7312 Lake St. • Omaha, NE 68134
402-871-8437 • markcollins@cox.net

HISTORIAN: STEVE BROWN
1816 Sakenda Rd. • Buffalo, MN 55313
763-684-2400 (after 5 p.m.) • bigpaws@charter.net

REPRESENTATIVE AT LARGE: WALLY ARMSTRONG
24129 Old Owen Rd. • Monroe, WA 98272-7681
360-794-7172 • armst101@aol.com

REPRESENTATIVE AT LARGE: JERRY ERDMANN
W15416 Fair-Morr Rd. • Tigerton, WI 54486
715-535-2094 • jjerd@frontiernet.net

AUCTION MANAGER: JEFF FLOYD
208 E. Somonauk • Yorkville, IL 60560
630-553-9234 • jfloyd5762@aol.com

CO-COMMEMORATIVE MANAGERS: JOHN TREMBLE
942 Becky Circle • Hudson, WI 54016-7509
715-381-0006 • rwcscommemorative@hotmail.com

MATT HUEPFEL
rwcscommemorative@hotmail.com

INTERIM EDUCATION MANAGER: TERRY SPEEDY
5079 S. Seymour Rd. • Swartz Creek, MI 48473
810-938-3228 • thespeedys@tcwireless.us

JULY CONVENTION SUPPORT PERSONNEL:
Pre-registration – DONNA & CHUCK HANSON
Computer Registration – LORI ANDERSON
Show & Sale – CINDY & PETE MAY
Display Room – JULIE & GLENN BEALL

IN THIS ISSUE.....



- PAGE 3 NEWS BRIEFS, ABOUT THE COVER
PAGE 4 RWCS NEWS, KIDSVIEW UPDATE
PAGE 5 HUTCHSON COLLECTION RETURNS HOME
PAGE 6 RWCS NEWS, MEET THE NEW OFFICE STAFF
PAGE 7 RED WING SPITTOON PICTORIAL GUIDE
PAGE 8 MIDWINTER PHOTOS
PAGE 10 RED WING NOKOMIS
PAGE 12 RWCS BOARD OF DIRECTORS ELECTION BIOS
PAGE 14 CLASSIFIEDS
PAGE 15 RECENT FINDS & DEALS
PAGE 16 A LONG AWAITED REUNION, '06 DISPLAY ROOM

NEWSLETTER EDITOR

Rick Natynski

General Delivery: USPS • 13425 Watertown Plank Road
Elm Grove, WI 53122-9998
rwcsnewsletter@wi.rr.com 414-416-WING (9464)

A primary membership in the Red Wing Collectors Society is \$25 annually and an associate membership is \$10.

There must be at least one primary member per household in order to have associate membership. Members can pay for more than one year when renewing their membership. Contact the RWCS business office for additional details.

The Red Wing Collectors Society, Inc. Newsletter is published bi-monthly by the Red Wing Collectors Society, Inc. Suite 300 • 2000 West Main Street Red Wing, MN 55066.
Phone: 651-388-4004 Fax: 651-388-4042
www.redwingcollectors.org

Postmaster: Send address change to: Red Wing Collectors Society, Inc. Newsletter
PO Box 50 • Red Wing, MN 55066. USPS 015-791; ISSN 1096-1259.

Copyright © 2006 by the Red Wing Collectors Society, Inc. All rights reserved.
The Red Wing Collectors Society, Inc. does not guarantee the accuracy of articles submitted by individual members.

NEWS BRIEFS

WESTERN STONWARE TO CLOSE AFTER 100 YEARS

RWCS Co-Commemorative Manager John Tremble sadly reports that the Western Stoneware Company will close its doors after a century of doing business. Western Stoneware, located in Monmouth, Ill., has experienced a significant decline in business due to the influence of the Asian pottery and ceramic markets, according to an article from the *Peoria Journal Star* sent in by RWCS member Evelyn Perrine.

“Western had produced half of the annual summer convention commemoratives for RWCS,” John says. “Their willingness to work with new items, new techniques and decorations was key to producing unique commemoratives.”

Western was commonly known as Monmouth Pottery when it was started in the mid 1880s. Seven potteries from throughout Illinois merged to become Western Stoneware in 1906, which is why this year is considered its 100th anniversary.

Western Stoneware’s outlet store, The Pottery Barn, will remain open until its remaining inventory is sold. The Monmouth Area Chamber of Commerce will still hold an event commemorating Western’s 100 years in business on June 10, but it will be bittersweet, considering it’s the same day the plant is scheduled to auction off its contents.

John says Western is honoring its contract to produce the 2006 RWCS Commemoratives, but will close shortly thereafter, making our piece one of the last to be thrown.

As usual, all reasonable efforts will be made to have commemoratives mailed by the end of July. However, members are encouraged to consider appointing another member to pick up their commemorative, saving themselves \$10 and the Society the extra processing of those mail-out pieces.

John and Co-Commemorative Manager Matt Huepfel have begun searching for another pottery to create the 2007 RWCS Commemoratives, and have already identified some potential manufacturers that do quality work.

2006 BOARD OF DIRECTORS ELECTIONS

Enclosed with this issue of your *Red Wing Collectors Society Newsletter* is a ballot for the RWCS Board of Directors elections. Balloting will be by mail in accordance with RWCS by-law Article V, Nominating Committee and Voting Procedure. Ballots will be mailed to all members in good standing and must be received by the RWCS Business Office no later than June 30, 2006. To request ballots for associate members, contact the Business Office at 800-977-7927 or rwcsmem@redwing.net. Photocopies will not be accepted.

RWCS 30TH ANNIVERSARY BOOK

The time is drawing near for the RWCS 30th Anniversary Book to be compiled, so this is the last chance to submit articles and pictures you want included.

Remember, this is our book about our organization and the quality is up to us as members. Everyone wants to see and read about the collections of other members, and this is the perfect opportunity. A representative from the publisher will be present at the Convention in July to take pictures and help with your story, so please be prepared.

Please send articles and pictures to Red Wing Collector Book, c/o Turner Publishing Company, PO Box 3101, Paducah, KY 42002-3101. If you have questions, call 270-443-0121 or email info@turnerpublishing.com.



What a cutie! Lacy Bell stands beside the Red Wing Nokomis floor vase owned by her father and grandfather.

ABOUT THE COVER

Believed to be the largest piece of Red Wing Art Pottery known to exist in the Nokomis glaze, collector Craig Bell and his father, Wayne Bell, purchased this floor vase from an Illinois antique dealer in 2005.

“Right now Dad gets to display the vase for one month and I get it every other. Kind of like a child with divorced parents,” Craig jokes.

Craig has collected Nokomis for six years and has about 25 different shapes in his collection. In those years he’s never seen or heard of a piece of this size.

“I started in Nokomis because each piece looks different as each one was hand-glazed,” he explains. “If you have 15 vases in the same shape, they all still look different.”

Craig believes Nokomis wasn’t a glaze typically used for such a large piece, considering it must have taken a long time to apply.

If you have any information about this piece or know of any others like it, please contact Craig Bell at 612-242-1061 or craigbell69@charter.net.

For more about the Nokomis glaze, turn to page 10 where collector Mark Ebertowski shares his knowledge and photos of his collection.



**SUE JONES
TAGLIAPIETRA**

Interim President

Please join me in welcoming Stacy Wegner as the new business manager and Lori Anderson the new administrative assistant in the RWCS Business Office.

Stacy lives in Red Wing and has extensive experience in organizational marketing and promotions. She loves Red Wing pottery and is a new, but avid collector. She brings an enthusiasm that is infectious and is a great asset to the Society.

Lori lives in Hager City, Wis. She has worked in the business office starting as the data entry person and has managed the office over the past few months. Lori has a strong business background and will continue to serve as the membership contact, but will also manage some of the business aspects of the Society.

We are fortunate to have Stacy and Lori to help manage and grow the Society. The office hours are 9 a.m. to 5 p.m. Monday through Friday until further notice.

Marcia Hislop resigned as administrative assistant and interim business manager at the end of January. Marcia was well-known to many members in her role as the membership contact person. She worked in the office for more than 5 years. She so graciously agreed to fill in as the interim business manager until we could recruit and hire a new person. We want to thank Marcia for all she did for the Society and wish her all the best in the future.

If you didn't get to MidWinter this year, you missed a GREAT time! The Board kicked off the Mardi Gras theme by handing out beads to attendees Friday afternoon. There were cool decorations in the ballroom at the Friday evening social. The food was good and people hung around to talk with one another. A particular highlight of Friday evening was the commemorative silent auction fundraiser the chapters held to raise money for the RWCS Foundation. Several chapters had their commemorative available for bids with the Nebraska Redwings being the big winner. In all, \$970 was raised and two members donated \$30 at the general session Saturday morning to make it an even \$1,000. The education seminars were wonderful and very well attended, as was the show and sale. Room sales were very popular, as always. Thank you to Lori Anderson, Diane Hallstrom and Wendy Callicoat for all of their work and creative genius.

The MidWinter will continue in Iowa in 2007 with the intention of considering a new location in 2008.

JULY 2006 KIDSVIEW SCHEDULE "HATS OFF TO COLLECTING"

THURSDAY, JULY 6

1:00-1:50	MAKE YOUR OWN STONEWARE
2:00-2:50	AUCTION VIEWING
3:00-3:50	KIDS ONLY AUCTION

FRIDAY, JULY 7

10:00 -10:50	HATS ON AND START THINKING SO YOU WANT TO START A COLLECTION?
11:00- 11:30	WHICH HAT WILL YOU WEAR? SEEING AND FEELING ALL OF THE THINGS YOU COULD COLLECT
11:50-12:30	JUST YELLOW HATS? NARROWING IT DOWN EVEN MORE
12:30-1:20	DISPLAYING YOUR COLLECTION
1:30-2:20	PUTTING TOGETHER A COLLECTION
2:30-3:00	UNWIND AND PUT IT ALL TOGETHER

2006 KIDSVIEW THEME

The theme of this year's KidsView seminars at the July Convention is "Hats Off to Collecting." We have studied stoneware, art pottery and dinnerware, and now will help children think more about collecting. We have invited some of our graduates to talk about how they got started. Various members will show and talk about the things they collect. Of course, along with the speakers and demonstrations we will have lots of fun adventures for participants. We don't want to give away all of the cool ideas, but there might be a scavenger hunt in the plans and of course always something good to eat.

Kids, bring your favorite hat and pictures of a collection you have, or would like to have.

The KidsView Auction will take place in the afternoon of Thursday, July 6. Anyone wishing to donate an item to the auction may drop it off in the auditorium at noon on Thursday. We always need items as we get more and more children attending every year.

Note that we will end kids seminars at 3 p.m. on Friday, July 7 so there is ample time to get to the annual business meeting.

We also need volunteers!!!! Anyone wishing to help with the KidsView activities and seminars should contact Sue Jones Tagliapietra or Wendy Callicoat. You can help for an hour or more depending on your availability.

HUTCHSON COLLECTION RETURNS HOME

Story by Rick Natynski

Setting an attendance record, more than 400 people traveled to the MidWinter GetTogether held Feb. 10-12 in Des Moines. This year they were treated to a special surprise – the announcement of an important donation to the Red Wing Collectors Society Foundation.



Proud Donors: Bonnie and Dave Hutchson

“This was my parents’ vision, and now it’s your vision,” Dave said. “The Hutchson Collection, which is now your collection, is going home where it belongs.”

Dave said “pottery flowed through the veins” of his father, Teddy Hutchson, who was a longtime employee of the Red Wing Potteries, and the last person to work there in 1967. He was directed by Richard Gilmer to dump everything remaining in the buildings, or keep whatever he liked.

Thankfully he kept most of it, and now a lot of collectors will get the answers to questions they thought would forever go unanswered. The senior Hutchson saved documents dating back to the company’s inception, including a complete set of catalogs from 1877 to 1967 and every pamphlet Red Wing ever produced.

He also saved items such as: Hamms ashtray form molds, 50 different Charles Murphy colored-pencil drawings, a lunch hour bear Teddy made Dave when he modeled the Hamms Beer Bear, Birch Bark mug (the only one ever produced), glaze and color formulas, and the last lunch hour piece ever produced, which Teddy made for Dave before he left the Potteries for the last time.

One of the most remarkable items in the collection is a journal containing the complete records kept by a salesman who sold advertising pieces to owners of mercantiles, saloons, grocery stores and other businesses from 1909 to 1912. Advertising stoneware collectors will go wild when they hear about some of the pieces commissioned that were previously not known to exist.

Dave’s parents lived on an island in the Mississippi River and more than once had to transport the collection to higher ground in Red Wing to avoid damage from flooding. Dave and Bonnie have since preserved the collection for years, and the items mentioned in this article only begin to break the surface of the extensive collection, more of which will be unveiled at the museum during the July Convention in Red Wing.

Following the presentation, RWCS Foundation Board member Dave Kuffel asked for the membership’s help in preserving the collection at the museum.

“Once everything is properly categorized, preserved and displayed, the museum will probably be one of the best in the country of its kind,” he said. “But right now we’re looking for money, time, resources and business connections to get this done right. If you’ve got anything to offer, please step up to the plate and help us out.”

Contact the RWCS Business Office to offer your support. And look forward to an extensive feature on the Hutchson Collection in the August issue of the *RWCS Newsletter*.

UNIQUE PIECES SEEN AT THE MIDWINTER GETTOGETHER





**JEFF
FLOYD**

Auction Manager

May 15th is the deadline for submissions for the 2006 Convention Auction. Your auction form must be postmarked by that date. Refer to the Rules and Guidelines included with your February newsletter. Just a reminder that the lower commission rates are still in effect for 2006.

Members will be able to use credit cards for the first time at the Convention Auction. Cards accepted will be MasterCard, Visa and Discover. There will be a 5 percent convenience fee added to all credit card purchases.

Every member may submit an item for the July auction. You may photocopy the auction form. Remember that all entries are subject to the lottery. If drawn in the lottery, you or a friend must bring your piece to the auction. You cannot ship it to the auction manager or the business office.

If you have any questions regarding the auction, please call me directly. Jeff Floyd at 630-553-9234 evenings.

CHAPTER EVENTS

Wolverine Chapter

1 p.m. Saturday, May 6 at the Ackerman home in Midland, Mich. The event will begin with a potluck lunch, followed by the business meeting. Call 989-832-2527 for further information.

Trails West

Saturday, April 29 in Melvern, Kan. Details in Trails West Newsletter. Contact barn40@earthlink.net or 785-549-0116, tctraders@aol.com or 785-549-3435 for further information.

Illinois Chapter

Noon Sunday, May 7 in Crystal Lake, Ill. Call 815-624-6201 for further information.

Golden State Chapter

1 p.m. Saturday, June 3 at the Denny and Kathy Decker home, 3624 Springer Court, Walnut Creek, Cal. Call 925-945-6613 for more information.

Siouxland Redwingers

Noon Saturday, April 22 at Pizza Ranch in Yankton, S.D. Contact Glenn and Julie Ellen Beall at 712-644-2256 or gbeall@logonet.net for more information.

Puget Sound Chapter

1 p.m. Sunday, June 4 at Wally Armstrong's home. E-mail armst101@aol.com for further information.

Indiana Redwingers

Organizational meeting: 1 p.m. Saturday, April 22 at the Sue and John Ingwersen home, 11141 Echo Grove Lane in Indianapolis, Ind. Call 317-823-8543 for more information.

MEET THE NEW OFFICE STAFF



STACY WEGNER

Business/Convention Manager

As many of you learned at the MidWinter GetTogether, I have accepted the position of business manager/convention manager and find myself overwhelmed with excitement and happiness for this new opportunity.

I've lived in Red Wing since 2000 with my husband Luke and our dog Jake. Luke and I bought our first piece in an antique shop in 1997, the summer we met. We have become more avid collectors since purchasing our house in 2002, wanting a little piece of Red Wing in our home.

I grew up in Milwaukee, Wis. and graduated from the University of Wisconsin-Whitewater in 1998 with a degree in Marketing. For the past four years I managed two of the largest trade shows for the fire, rescue, and EMS market at Cygnus Expositions in Burnsville, Minn. I worked with more than 700 exhibitors year-round to help them have a great experience at our events. This position gave me the opportunity to expand my customer service and management skills.

I am very excited about working with all RWCS members. I would like to bring my trade show background to the annual convention and MidWinter to ensure its continued success in the future. I'd also like to increase the awareness of the Society locally, regionally and nationally. Most of all, I want to hear your ideas, thoughts and opinions to grow the RWCS membership.

Thanks to everyone who attended the MidWinter for the kind words of encouragement and support. I look forward to working with everyone in the coming months and meeting everyone at the July Convention.



LORI ANDERSON

Administrative Assistant

I want to say "Hello" to all RWCS members! When I started working as the temporary data entry clerk, I had no idea that a year later I would be hired on in the permanent position of administrative assistant. I am thrilled and excited to be an "official" part of the Society.

During the past year I had the pleasure of working with not only Kay Wilhusen, Marcia Hislop and the members of the Board of

Directors, but also all the wonderful volunteers that donate their time to help make the July Convention and MidWinter GetTogether so successful.

The MidWinter was not only successful in attendance and fun this year, it was also successful in increasing the number of pieces of Red Wing I own. While I find myself leaning more toward dinnerware and art pottery, I also have a strange fascination for stoneware water coolers. Though I do not own any water coolers (as of yet), I do like looking at all the different shapes, sizes and designs.

I'm looking forward to meeting and working with more of our members at future events. This is truly an exciting time!

SPITTOONS

A PICTORIAL GUIDE TO CHEWING TOBACCO'S FINAL RESTING PLACES



Red Wing salt glaze spittoon

How could it be that German spittoons are some of the most beautiful pieces of stoneware Red Wing made, yet they sat on saloon floors and were used for such an unappetizing function?

Since they were advertised in the company's catalog as being "Especially designed for Bar Rooms, Lodge Halls and other public places," it makes sense that such care taken was taken in applying the fancy, detailed coggle wheel decoration. After all, Red Wing was known for its high quality products, and product placement in high visibility areas has always been a great way to advertise – even back then. Amusingly, there's a belief shared by some collectors that despite the presence of these spittoons, men would still spit their tobacco on the floor because they didn't want to get the spittoons dirty.

Marv Osterholz shared the photos of these Red Wing and Minnesota Stoneware spittoons and cuspidors from his collection. He's collected Red Wing spittoons for 15 years.

Side-stamped spittoon shard



Albany slip mold seam cuspidors



Blue-banded cuspidors



Blue-banded cuspidors with Albany slip interior



Sponge cuspidors



Toy spittoons or salesman samples shown with Red Wing thimble for size perspective



Rare Minnesota Stoneware salt glaze German spittoons



German spittoons from above photo showing bottom signatures



A Red Wing salt glaze German spittoon next to its younger sibling – a transitional German spittoon



Zinc glaze cuspidors with Albany slip interior

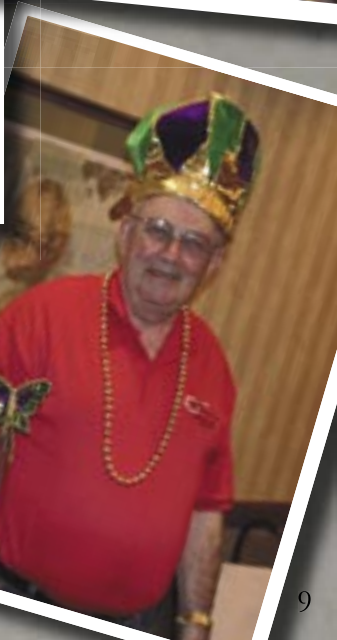


MIDW 20



INTER

06



RED WING

“**N**okomis – a metallic finish in gray and tan with a tint of Copper.” This is how the 1931 Red Wing Pottery price list describes the Nokomis glaze. The Nokomis glaze was applied to vases, planters, and lamps from the late 1920s to the mid 1930s.

The glaze can vary widely; it is sometimes matte, sometimes glossy, and the colors vary from green to brown to gray and any combination in between. Occasionally, black or blue will appear in the glaze. Due to this combination, every piece is unique. I categorize Nokomis glazed pottery in three categories: Red Wing, RumRill, and Lamps.

Red Wing

Red Wing Nokomis glazed pottery appeared in Red Wing catalogs as early as 1929. The 1931 price sheet is one of the best Nokomis references there is. There are 18 shapes listed as being available in the Nokomis glaze. Additionally, shapes 50, 52 and 54 from the same period can be found. Examples of shape 53, 166, 172, 213 and 717 are known to exist, but were probably not standard offerings. Red Wing pieces are almost always marked on the base with the circular blue ink stamp and the shape number. The unmarked 236 elephant planters and 231C candlesticks are exceptions.

RumRill

An article in the January 1934 *Crockery and Glass Journal* announces the Indian group in two new RumRill glazes, “Nokomis” and “Red Wing.” The Nokomis glaze is RumRill glaze #22. The appearance of this glaze is different than that of the Red Wing examples, having a brighter, glossy appearance. It is unknown whether this difference is intentional or not. Unlike most RumRill pottery produced by Red Wing, the



NOKOMIS

Story by
Mark Ebertowski



Red
Wing
Lamps

bottom of the Nokomis glazed pieces was left buff or unglazed. These pieces are usually only marked with the shape number, sometimes marked RumRill. Most of these pieces would have had a paper label with the glaze and shape numbers. RumRill Nokomis pieces are rarely found, with the exception of #50. One set of the eagle bookends (shape 333) has been found with the RumRill paper label.

Lamps

There are as many lamp shapes with the Nokomis glaze as there are vase shapes. I'm aware of 20 lamp shapes known to exist at this time. Most lamps with the exception of 887 and 806 seldom appear on the market. The lamps were produced from the early to mid 1930s.

No discussion of Nokomis would be complete without addressing the "Is the #164 lion vase Nokomis?" question. My answer is that I would speculate that the same glaze components were used, but with a different application. Just as beautiful, desirable and valuable, but technically not Nokomis. Pottery with the Nokomis glaze is quite collectible and as a result, usually commands higher prices than other glazes of the same period. It can be difficult to find, but the more common pieces are often found on eBay and in private shops in the Red Wing area. ■



Red Wing
Nokomis
novelty pieces

Mark has collected Nokomis since the early 1990s and lives in the Nokomis neighborhood of Minneapolis. He displayed his collection of Nokomis lamps during the 2005 Convention. Looking to add unique pieces to his collection, Mark can be reached via email at mark.ebertowski@earthlink.net to answer questions.

RWCS BOARD OF DIRECTORS ELECTION BIOS



SUE JONES TAGLIAPIETRA
Candidate, RWCS President

I was originally elected to the RWCS Board of Directors as secretary in 1998. I served as secretary for a full term and in the second year of my second term was elected interim president by the Board of Directors. It has been an exciting and rewarding two years. I have particularly enjoyed the challenge of meeting new obstacles and working with this marvelous Board to develop creative and responsible solutions. I am particularly proud of the way this Board has responded to unexpected vacancies in the RWCS Business Office and on the Board itself.

I live in Madison, Wis. with my husband Jeff. We have been members since 1988 and are primarily stoneware collectors, although we have failed miserably at sticking to “just” stoneware. We have two daughters and five grandchildren. I am retired and enjoy devoting my time to family, RWCS and antiques.

I would be honored to have the privilege of being your president for the next four years and will work with the members to keep this wonderful organization strong and thriving.



JOLENE MCKOON
Candidate, RWCS Vice President

I am a relatively new member to RWCS, joining in 1999. My son introduced me to eBay at that time, and I did a search looking for an art deco vase. I found one I liked, which happened to be made by Red Wing. After I received the vase and fell in love with it, I did a search for other items made by Red Wing, and a die-hard collector was born. Eventually I became enthralled with stoneware and dinnerware, so now I have a little bit of all types of products made by the various Red Wing companies.

As for my background and qualifications for RWCS vice president, I am a member of the Illinois Chapter and have been its newsletter editor since the publication's inception in fall 2000. I have presented three educational programs on Belle Kogan. I also served last year on the RWCS Alternate Revenue Sources Committee and have volunteered for the past three years at the KidsView Auction held at the July Convention.

Professionally, I've served on the board of directors of a charitable health foundation in Moline, Ill. and have worked for Trinity Regional Health System for more than 30 years. In my career with Trinity, I've held several positions and am quite familiar with fulfilling the mission and values of a board, including the requirements for its fiduciary responsibilities to the corporation and its members. So, combining my love of all things Red Wing and my business background, serving on the RWCS Board seems like a perfect match, and I hope the membership will support me in my bid for vice president.



MARK COLLINS
Candidate, RWCS Treasurer

I have served as treasurer since May 2005, when I was appointed to complete Jerry Schleich's term. It was humbling to even be considered for the post! I accepted and quickly learned that the financial status of the Society was in good shape, much to the credit of Jerry.

A native South Dakotan, I currently reside in Omaha and am an attorney with the Nebraska Department of Justice, where I serve as the director of the Nebraska Medicaid Fraud Control Unit. I primarily collect Red Wing stoneware and Cahoy Pottery (a South Dakota product).

Other board service includes 11 years as a vice president and board member of the Sioux Council Boy Scouts of America and two years as a board member of Volunteers of America/Dakotas, a large social service organization.

RWCS will face some interesting challenges in the coming years with respect to our membership numbers, and it is important that our finances likewise be carefully watched. We now have a good system in place for planning and implementing our budget. Having the budget process in place and taking the necessary steps to safeguard our financial integrity are the most important jobs of the treasurer. I have enjoyed my time as the RWCS treasurer and would appreciate the chance to continue serving in that capacity.



RUSSA ROBINSON
Candidate, RWCS Rep. at Large

To tell you a little about myself, I am a wife, mother, grandmother, teacher and an avid Red Wing collector of everything. My husband Mike and I have raised three children on our family farm in Stockton, Cal.

Red Wing is a big part of our lives. We have been members of RWCS since 1982, when we brought our young family to the beautiful city of Red Wing for our first July Convention. We haven't missed one since! My husband and I started volunteering with the KidsView program at its inception, and both believe involving the kids is a wonderful way to keep our organization healthy and growing. In 1987, we helped charter the California chapter, and now spend the year traveling the state to attend our meetings.

State chapters are an important part of RWCS, as they are vital to the growth of our society. In fact, many of our members have been introduced to RWCS through a chapter meeting. As a representative at large, one of my main goals would be to “help RWCS help you.” Some chapters have been around for a long time. Others are just forming and could use the help of RWCS to get up and running. Each chapter has its specific needs and could benefit from RWCS resources. I would be proud to be part of that process. I am committed to RWCS, and care deeply about the issues that face the Society and its future.



JERRY ERDMANN
Incumbent, Representative at Large

I have been a member of RWCS since 1989. The past eight years I have served as representative at large.

I am honored to be able to serve the members of this organization. As one of your representatives, I have had the privilege of meeting and working with many Red Wing collectors. I have also had the

opportunity to answer questions and help with the organization and re-organization of state chapters.

I welcome telephone calls and e-mail regarding the organization of state chapters and other RWCS concerns.



PAULETTE FLOYD
Incumbent, RWCS Secretary

It has been my pleasure to serve as the RWCS interim secretary since November 2003. I hope to continue serving as secretary the next few years. From 1994 to 2004 I served as co-auction manager with my husband Jeff.

Jeff and I became members in the mid 1980s and this summer will be our 20th

convention. We continue to collect advertising stoneware and grey line. I recently started purchasing Pink Spice dinnerware, much to the dismay of Jeff.

As a Board member I will continue to support the most responsible means to protect the RWCS assets. I will also continue to promote growth for the Society and make the July Convention a highlight for all attending.



STEVE BROWN
Incumbent, RWCS Historian

The Red Wing Collectors Society continues to be an important part of my life. I grew up in Red Wing and currently live in Buffalo, Minn. with my wife Barb.

My collecting interests are quite varied.

I collect all types of Red Wing, including stoneware, art pottery, dinnerware and memorabilia. As most RWCS members know, my passion is for the Red Wing "oddities" that surface from time to time and researching the history of Red Wing products. I also enjoy collecting non-Red Wing items produced by designers that had collaborative relationships with the Red Wing Pottery, like Charles Murphy artwork and Ernest Sohn items.

RWCS continues to enjoy the most educated membership of its collectible. It has been an honor to serve as your historian for the past eight years and I wish to continue serving in this role. I look forward to continuing the exploration, interpretation and communication of recent Red Wing documentation. I plan on continuing to support research to understand our collectible and provide assistance to the RWCS membership whenever possible.

FOR SALE



One-of-a-kind handmade 44-inch crock table, standard 30-inch height, with 4 stools 17 inches high. Crock has 6-inch wings and bailed handles. The crocks have not been altered in any way and are in good condition. Table and stool tops are made of red oak and blue Formica with white specks (the blue matches the blue of the number on the crocks). The table has adjustable legs.

A unique piece for only \$1,950. Would consider delivery, call 920-758-2410 for details.

HUGE AUCTION

NANCIE BRAY ESTATE

Wed. April 19 & Thurs. April 20
8:30 & 9:00 a.m.
Baraboo, WI

Baraboo Arts Banquet Hall
323 Water St. (Highway 113)
Just west of Circus World Museum
Baraboo, WI

HUGE 2 DAY AUCTION

1st day

Antiques & collectibles, Red Wing Pottery, Sleepy Eye, other stoneware, coins, garage and outdoor items.

2nd day

Antiques & collectibles, toys, furniture, books, household and miscellaneous.

For more information, call 715-532-5095.
For full listing see www.gavinbros.com.

Classified ads are 15¢ per word; \$3 minimum charge.

Ads are divided into the following sections: Red Wing For Sale, Red Wing Wanted, Other Pottery For Sale, Other Pottery Wanted, Events, Clubs, Auctions, Publications & Web Sites, Announcements and Services. You will not be charged for these words, but please indicate which section your ad should be placed in. If ad is to run in more than one issue please indicate at time of placement. (Note: the small number at the end of an ad tells when the ad expires, e.g., 12/06. Ads without dates are one-time ads.) Please type or print clearly and proofread before submission.

DISPLAY ADS

Display Ad Size	1x	6x
Full page	\$400	\$360
1/2 page (<i>horizontal or vertical</i>)	200	180
1/4 page	100	90
1/8 page	60	45

Display Ad Dimensions

Full Page	7 1/2 x 10
1/2 page (<i>horizontal or vertical</i>)	7 1/2 x 4 7/8
1/4 page	3 5/8 x 4 7/8
1/8 page	3 5/8 x 2 1/4

Display Ads are accepted on a first-come, first-served basis. The publisher reserves the right to refuse ads for any reason.

The Newsletter is produced on a PC in Adobe InDesign. Ads must be supplied electronically as an EPS or PDF file for PC. Be sure to include all fonts used. If you are unsure about acceptability, inquire with the Editor. There is an additional 10 percent fee for design and makeup if needed. Camera-ready ads are not accepted. Unformatted or unreserved ads will be treated as classifieds.

DEADLINES

Issue	Ad Deadline	Editorial Deadline
February	Jan. 10	Jan. 1
April	March 10	March 1
June	May 10	May 1
August	July 25	July 15
October	Sept. 10	Sept. 1
December	Nov. 10	Nov. 1

EDITOR ADDRESS

Make checks payable to RWCS and mail with ads to: Rick Natynski
General Delivery: USPS
13425 Watertown Plank Road
Elm Grove, WI 53122-9998

RED WING FOR SALE

Unusual Red Wing 3 gal. blue-banded stoneware water cooler, bailed handles with original bar and petal lid. HAS POTTERY OVAL, 2 inch wing. No defects. Will pack, insure and ship for \$600. Red Wing ashtrays: #745, \$35; #828, \$30; #890, \$60. Village Green: Ten tall beverage mugs, \$15 each; two handled marmites with original Village Green pottery stickers on lids, \$30 ea; 2-gal. cooler stand, \$40. Bob White: Hors D'oeuvres Bird, \$35; pair salt and pepper, \$25. Len Lindstrom, 7405 Topeka Ave., Lubbock, TX 79424. Tel 806-799-8101. lenredwing@nts-online.net

Beater Jar w/advertising "Compliments of Monona Dept. Store" \$365 includes SHI. Beater Jar w/adv. "New Confectioner and Grocery - Next to Mo Haupt's - Grand Rapids" \$365 includes SHI. Banjo planter, white #908 - \$195. Violin planter, brown #907 - \$225. Call Beverly at 541-881-1102.

300+ pieces of Red Wing including cookie jars, crocks 4-50 gallon, churns, dinnerware, vases, Rumrill, etc. Prefer to sell all at once. Call Bill at 218-847-8054 or e-mail sbselck@lakesnet.net.

One gallon Red Wing blue-banded cone top jug Contra Costa Wine Co., Chicago - \$1,000; Huron Dairy Depot Luxury Butter 3 lb. (dark black advertising) - \$600; Winona Farm Products 3 lb. Butter (blue ink) - \$200; 5 gallon blue birchleaf churn with Union oval, correct lid and dasher - \$375. Commemoratives: 1989 pitcher - \$225; 1990 jug - \$70; 1991 pantry jar - \$85; 1992 NS jug - \$55; 1993 poultry - \$70; 1994 20 lb. butter - \$60; 1995 giraffe - \$65; 1996 casserole - \$80; 1997 SG butterfly crock - \$90; 1998 pitcher - \$80; 1999 Koverwate - \$50; 2000 Hamms - \$75. Call Ed Stoll at 608-834-9664, or e-mail edstoll@charter.net.

Sids Antiques Tower City, ND. I'm located 45 miles west of Fargo. I'm the largest Red Wing dealer in ND. Traveling my way this year? Stop in! Call 701-749-2586.

Adv. Iowa Beater Jar, \$300; 5 gal. brown top Purex jug, \$350; 3 lb. Pantry Jar, \$580; Adv. Nebraska stacking refrigerator jar, \$300; 20 lbs. wing butter crock, \$1,000; 5 gal. Waconda water jug, \$750; 1/2 gal. dome top fruit jar, \$2,600; 50 gal. ice water cooler, \$4,000. 701-749-2586.

Hamms Bear Bank in perfect shape, \$550. Also have salt glaze butter churns for sale! Call Kevin at 952-873-6869.

Commemoratives: 1996 - \$80; 1997 - \$70; 1999 - \$50; 2002 - \$70; 1 gal crock w/large wing, \$450. Nude bud vase #912, \$400. Pretty RW ashtray, \$350. Hamms Krug Klub mug, \$95. Call Orville at 509-751-0948.

2 brown top advertising jugs - Red Wing with MN advertising and misc. with CO adv; 2 gal. Monmouth/Western crock with blue lily; RWCS Newsletters 1978-2000; Clay Giants books and other RW/misc. stoneware books; and 1999 Koverwate commemorative. Call Lee Ann at 507-864-3876.

2 complete sets Commemoratives, 20# butters, salt glaze, rolling pins, fruit jars, cherryband pitchers, stacking refrigerator jars, embossed dairy butters, beater jars, Acid Proof pitchers and funnel, water coolers and ice waters, 1 gallon pantry jar, set of Clay Giants books, framed Red Wing #100 flour sack. Call 402-379-4895.

Handles and wooden lids. Send SASE for flyer to Larsen's Collectibles, 757 120th Street, Hampton, Iowa 50441-7555. Phone 641-866-6733. 12/06

RECENT FINDS & DEALS

Did you find a rare piece or a great deal worth sharing? Briefly describe the item, where it was sold, date purchased, venue (store, auction, etc.) and price paid. Send in on a post card, or if you'd like to include a photo for publication, e-mail rwcsnewsletter@wi.rr.com, or enclose in an envelope. Multiple submissions result in multiple entries in the Newsletter Special Commemorative Lottery at the 2006 Convention. Send to the editor at the address on page 2. All entries received between July 2005 and June of 2006 are eligible whether published or not. Please keep submittals with purchase dates within six months of the newsletter issue.

ITEM	LOCATION	DATE	VENUE	PRICE
RW bean pot w/Lucas, Kan. adv.	Chillicothe, Mo.	10/05	Auction	\$10
RW bean pot w/lid, chipped Mountain Lake, Minn. adv.	Southern Minn.	Fall 2005	Garage sale	\$0.50
Grey line cookie jar w/lid, small crack	Southern Minn.	Fall 2005	Garage sale	\$7.50
1 gal. Mason jar w/blue ink	Albert Lea, Minn.	11/05	Antique mall	\$725
Round-Up tea pot		12/05	eBay	\$470.65
Delta Blue ice lip water pitcher		1/06	eBay	\$158.05
5 gal. Ice Water cooler w/6-inch wing, button lid & spigot, mint	Lindstrom, Minn.	1/06	Antique mall	\$500
Polo player 11-inch clock, Bronze Line Mint, but missing stick	Forest Lake, Minn.	3/06	Auction	\$30
#1296 10-inch blue vase, small chip	Forest Lake, Minn.	3/06	Auction	\$40
Sponge pitcher w/Hull, Ia. adv.	Storden, Minn.	3/06	Auction	\$1,800
13-inch Lotus Bronze water pitcher		3/06	eBay	\$51.01



RED WING WANTED

Family member looking for Red Wing bean pot and/or milk pitcher from Ormsby, MN with Myron or Olaus Syverson name on it. Also looking for other collectibles with these names on them. If interested in selling, please call Tim at 507-537-0701. 2/07

AUCTIONS

Tuesday July 4, 2006 3:30 p.m. National Guard Armory Red Wing, MN. 400 pieces consisting of Salt Glaze, Birchleaf, Elephant Ear Crocks, Churns, Water Coolers, Blue Sponge, Sponge Mixing Bowls, Adv. Bean Pots, Memorabilia, Miniatures, Commemoratives, Art Ware and Advertising Pieces. Plus much more. Catalogs available May 1 at \$5.00 each. Houghton's Auction Service, 1967 Launa Ave., Red Wing, MN 55066.

Wednesday July 5, 2006 3:30 p.m. National Guard Armory Red Wing, MN. The Wayne & Sue Chapman collection consisting of Salt Glaze, Birchleaf, Water Coolers, Churns,

many Advertising Pieces, Spongeband, Saffron, Mason Fruit Jars, Dome Top Fruit Jars w/shield, Mini Jugs, Commemoratives and Special Commemoratives. Plus much more. Catalogs available May 1 at \$5.00 each. Houghton's Auction Service, 1967 Launa Ave., Red Wing, MN 55066.

CLUBS AND PUBLICATIONS

Buy, sell and trade Red Wing online! Red Wing Trading Post is now open! Please visit us at www.redwingtradingpost.com.

New stoneware book (*Antique Trader Stoneware Price Guide*); includes Red Wing; Monmouth-Western; Blue/White; Eastern U.S. 288 pages; colored photos; \$20 postage paid. Gail Peck, 2121 Pearl, Fremont, NE 68025; 402-721-5721. 12/06

NEW 2006 values for both *Red Wing Stoneware* and *Red Wing Collectibles*! \$9.95 each or \$17.95 for both plus \$1.50/\$2 postage, respectively. Quantity discounts available. Gail Peck, 2121 Pearl, Fremont, NE 68025; 402-721-5721. 12/06

A LONG AWAITED REUNION



This 4-gallon salt glaze leaf water cooler, which recently sold on eBay, made an appearance at the MidWinter GetTogether in Des Moines when it was delivered to winning bidder Bill Prock. Bill was showing it to some people during the Saturday night auction

when Gail Peck of *Red Wing Stoneware* fame came up and introduced herself. Gail was runner up in the eBay bidding, and bid on it because she wanted it in her collection...again.

Although she didn't win, at least she got to see it in person again after nearly 25 years. Pictured on page 7 of *Red Wing Collectibles*, a relative sold this very cooler to Gail for \$15 in 1979, and she sold it to a collector for \$500 in 1982. That collector held onto it ever since, until recently selling it on eBay.

Though difficult to make out, the words "Twin Springs Water" are factory stenciled on the front, behind the leaf. For some unknown reason, it appears an extra layer of glaze was applied on the front of the cooler to conceal the advertising.

2006 CONVENTION DISPLAY ROOM INFO

It's time to plan your 2006 display for the following categories: Stoneware, Dinnerware, Art Pottery, Memorabilia, Non-Competitive Displays and Rare Items.

Each regular display will receive one regular commemorative as a thank-you for volunteering to display. (This does not include rare item displays.) Regular displays will be judged for Best-of-Show and People's Choice awards. Rare items will be judged for the Dennis Yaeggi Rare Item Award by the membership. Winners of these awards will be announced at the Business Meeting and will receive a special commemorative. Any member who is registered for the convention is eligible to vote for People's Choice. A team of judges votes for Best-of-Show using criteria such as quality of pieces, representation and relation of types of pieces, educational value including written material, and related props that enhance the display. Chapter displays are noncompetitive and not eligible to win a special commemorative, but do promote the chapter and will receive one regular commemorative.

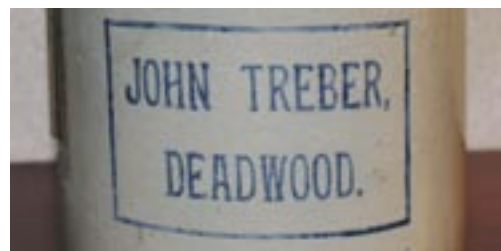
If you have any questions or would like to learn more about displaying or volunteering in the Convention Display Room, please contact Glenn and Julie Ellen Beall, display room chairs, at 712-644-2256 or gbeall@loganet.net. Write them at 215 W. 7th St., Logan, IA 51546-1221.

COMING IN THE JUNE ISSUE...



DEADWOOD'S
JOHN TREBER

CONVENTION
PREVIEW



YOUNG
COLLECTOR
PROFILE